

LEGEND

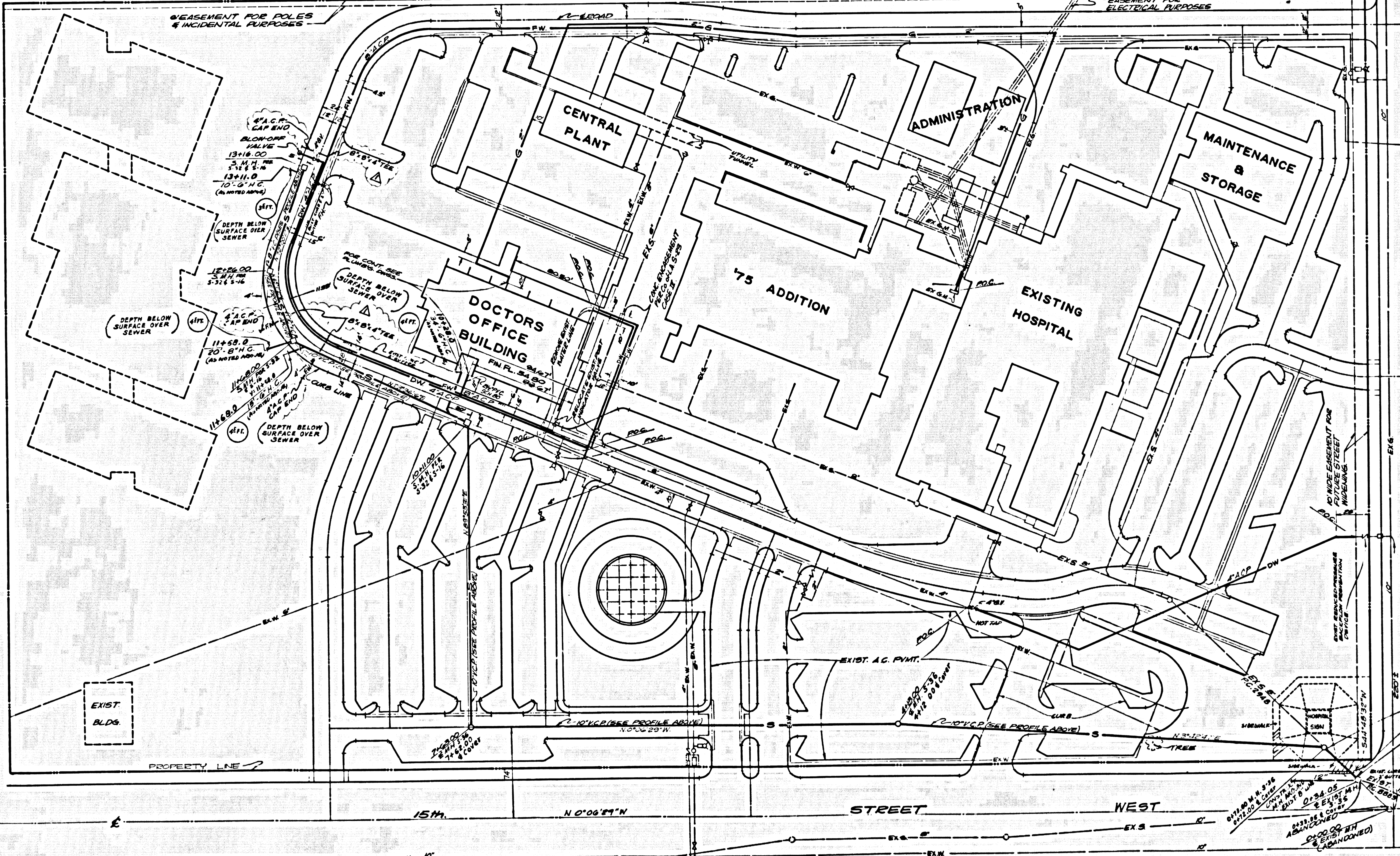
—	EXISTING WATER LINE
—	EXISTING SANITARY SEWER LINE
—	NEW DOMESTIC WATER LINE
—	NEW FIRE PROTECTION LINE
—	NEW SANITARY SEWER LINE
—	NEW NATURAL GAS LINE
—	SECTIONAL GATE VALVE
—	POST INDICATOR VALVE
—	MANHOLE
—	FIRE HYDRANT W/ VALVE ASSEMBLY
—	CLEANOUT
—	BACKFLOW VALVE
—	VITRIFIED CLAY PIPE
—	ASBESTOS CEMENT PIPE
—	INVERT ELEVATION
—	6 IN. METE
—	GATE VALVE

- CONSTRUCTION NOTES:**
- Work shall be constructed according to the Standard Specifications for Public Works Construction (1978 Edition with 1974 Supplemental) and County Engineer Special Provisions for the Construction of Sanitary Sewers dated MARCH 1, 1974 and shall be prosecuted only in the presence of the County Engineer.
 - The Contractor shall notify the District Division by telephone (974-7283) at least twenty-four hours before starting any work under this Contract.
 - Hose laterals to be constructed with inverts at property line 4 feet below curb grade except as noted.
 - Wye or Tee branches may be used for connections to mainline sewers except as noted.
 - All structures shall be either brick manholes per S.3 or precast concrete manholes per S.74, except as noted.
 - Provide stakes on the property line or property lines produced at right angle to the sewer line at the centerline of each manhole.
 - Manhole tops in unimproved rights-of-way to be six inches above finished grade.
 - Vitrified clay pipe joints shall be Type "D", "Y", or "G" per Standard Specifications Section 208.2.
 - If a power pole is within three feet of the sewer, the sewer shall be encased, per S.23, Case II, two feet on each side from the point of interference.
 - If during the course of construction it is determined that there is less than four feet of cover over the top of a main line or house lateral V.C.P. sewer which is not indicated on the Plans, the pipe shall be encased per S.23, Case II unless otherwise approved by the County Engineer.
 - All joints between cast iron pipe and vitrified clay pipe shall be made with a rubber sleeve joint, Type "C" or "D", (with bushing if necessary) per Standard Specifications, Section 208.2.
 - Sewers to be tested for leakage per Section 306-1.4 of the Standard Specifications and Special Provisions.
 - RESURFACE ALL DRIVEWAYS WHICH WERE MADE TO MEET A COUNTY ROAD DEPT. REQUIREMENT, BY RECONSTRUCTING WITH MANHOLE.

Los Angeles County Road Department Status B.M. No. CL 1-9, BIGN Tag 40 Ft. Co. M.C.R. 8 S.W. Cor. Ave. 7 & 15th St. V. 00 Ft. So. & 30 Ft. E. of Centerline Int. Lancaster (1962) N.W. 3351.094

SURVEY NUMBER

The basis for the existing topographic features, including certain underground utilities and structures shown on these plans, is a survey map prepared by Edward & Associates, Inc. in December, 1973. Survey No. 7-074.

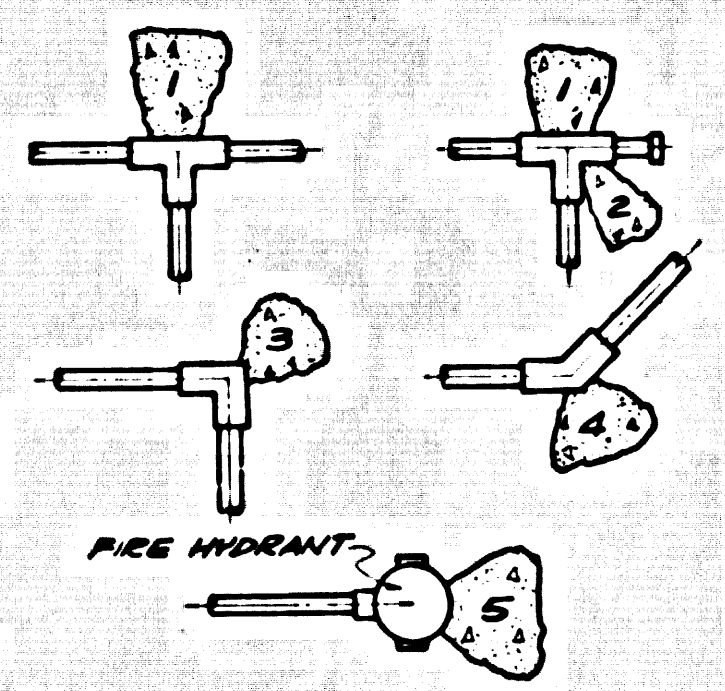


COUNTY SANITATION DISTRICTS SHALL BE NOTIFIED 24 HOURS PRIOR TO THE COMMENCEMENT OF ANY WORK THAT MAY BE REQUIRED IN ORDER TO OBTAIN A PERMIT TO CONDUCT SUCH WORK. (PHONE: 961-8000, 961-8001)

ACCEPTANCE OF THE PROJECT:

NO CONNECTION FOR THE DISPOSAL OF INDUSTRIAL WASTES SHALL BE MADE TO ANY SEWER SYSTEM OR TO THE SANITARY SEWER SYSTEM UNLESS A PERMIT FROM THE COUNTY ENGINEER'S OFFICE HAS BEEN ISSUED BY THE SANITATION DISTRICTS FOR SUCH CONNECTION.

SCALE: 1" = 40'



THRUST BLOCK SCHEDULE

LOCATION	AREA IN S.F.	TYPE
1	20	48
2	20	50
3	20	400
4	20	51
5	—	60

ABANDON 30' OF EXIST. 8" V.C.P. SEWER AND REPLACE WITH 30' OF 12" V.C.P. AT NEW ELEVATION. SERVICE MUST BE CONTINUOUS.

0.36 OF BREAK INTO EXIST. M.H. REPAIRS 8" V.C.P. AND REPLACE WITH 12" V.C.P. AT NEW ELEVATION AND FROM NEW CHANNEL IN BASE.

SANITARY SEWER FOR ANTELOPE VALLEY HOSPITAL PRIVATE CONTRACT NO. 90398 (PRIVATE)

44935

- GENERAL NOTES:**
- Elevations are in feet above U.S.C. & G.S. Sea Level Datum of 1929.
 - No revisions shall be made in these plans without the approval of the County Engineer.
 - No representative of the County Engineer will survey or lay out any portion of the work.
 - The private Engineer shall furnish the County Engineer with grade sheets and stationing for all house laterals and "Y" grade sheets and shall provide stakes for them at their proper locations with stationing plainly marked. All house laterals shall be constructed in a straight alignment at right angles from the main line sewer except as shown on the plans. House laterals from chimneys shall not have an angle of less than 45° with the main line sewer. Any change in alignment shall be requested in writing by the private Engineer.

- Approval of this plan by the County of Los Angeles does not constitute a representation as to the accuracy of the location of or the existence or non-existence of any underground utility pipe, or structure within the limits of this project. This note applies to all pages.
- Refer to Section 7-10.4.1 of the Standard Specifications, regarding Safety Orders.
- Prior to the issuance of a Sewer Construction Permit by the County Engineer, the Contractor shall obtain a permit to excavate from the State of California Division of Industrial Safety.
- BEFORE WORK CAN BE STARTED, THE CONTRACTOR MUST OBTAIN A PERMIT TO EXCAVATE IN COUNTY STREETS FROM THE L.A. COUNTY ROAD DISTRICT OFFICE NO. 5 AND IN A CITY STREET FROM THE COUNTY ENGINEER, OR IN A CITY STREET OR ANTELOPE VALLEY REGIONAL OFFICE TO COVER THE COST OF CONST. INSPECTION AND RECORD PLANS.

RECTANGULAR SHALLOW M.H.S-7
RECTANGULAR M.H. FRAME (COVER)S-4
PRECAST CONCRETE SHALLOW M.H.S-2

The following latest revised standard plans on file in the office of the County Engineer shall apply in the construction of this project:

LegendE-1
Minimum Public Safety RequirementsE-2
Brick ManholeE-3
Standard Manhole StepE-17
Bedding for Sewer PipeE-21
Cracking and EncasementE-23
Wye or Tee SupportE-26
Allowable Trench WidthsE-33
Locking Manhole Frame and CoverE-35
Non-Reinforced Precast ConcreteE-36

COUNTY OF LOS ANGELES, CALIFORNIA

BARVET T. BRANT, COUNTY ENGINEER JOHN D. PARFURST, CHIEF ENGINEER
Co. San. Dist. No. 16

APPROVED: *[Signature]* Regional Engineer (Date) 4/24/74 OFFICE ENGINEER

CHECKED: *[Signature]* (Date)
Reg. C.E. No. 16174

LANCASTER BLDG. DIST. 8.0 J. N. 0372.81

WILLIAM L. PEREIRA ASSOCIATES
PLANNERS-ARCHITECTS-ENGINEERS
URBAN SQUARE MCANTHUR BLVD. AT ROAD ROAD
CORONA DEL MAR, CALIFORNIA 92623

ADDITIONS & ALTERATIONS TO ANTELOPE VALLEY HOSPITAL MEDICAL CENTER
LANCASTER CALIFORNIA

UTILITY PLAN

1" = 40'

ISSUED FOR CONSTRUCTION DEC 26, 1973