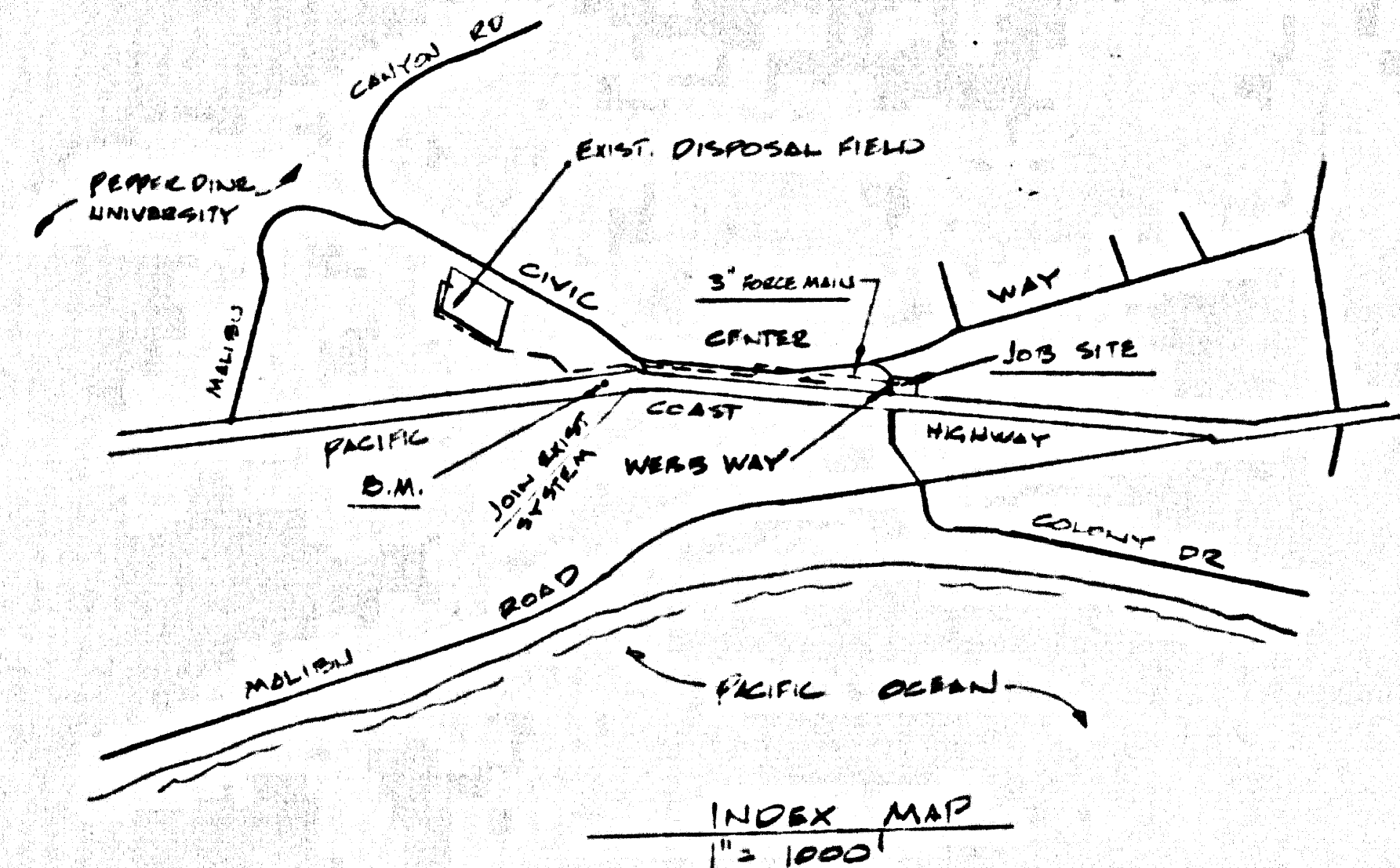


B.M. 48-53A ELEV. 90.64  
 N.C.H. & MALIBU CANYON RD. 82' SO. EAST  
 OF POWER POLE # 1045703, 80' WEST  
 OF TELL POLE # 186007 81' S. WEST  
 OF HWY STA. A 897750 AT A CATCH BASIN  
**QUAD. 19**  
 IN HWY DIVIDER STRIP, SET IN THE TOP  
 OF CONC. CATCH BASIN



**GENERAL NOTES:**

1. ELEVATIONS ARE IN FEET ABOVE U.S.C. & G.S. SEA LEVEL DATUM OF 1929.
2. NO REVISIONS SHALL BE MADE IN THESE PLANS WITHOUT THE APPROVAL OF THE COUNTY ENGINEER.
3. NO REPRESENTATIVE OF THE COUNTY ENGINEER WILL SURVEY OR LAY OUT ANY PORTION OF THE WORK.
4. GRADES TO WHICH THE IMPROVEMENT IS TO BE CONSTRUCTED ARE SHOWN ON PLANS AND PROFILES. GRADE POINTS FOR TOP OF CURBS, CENTER LINE OF STREETS, OR CENTER LINE OF ALLEYS ARE SHOWN BY CIRCLES ON PROFILES. AT ALL POINTS BETWEEN DESIGNATED POINTS THE GRADE SHALL BE ESTABLISHED SO AS TO CONFORM TO A STRAIGHT LINE DRAWN BETWEEN SAID DESIGNATED POINTS.
5. THE PRIVATE ENGINEER SHALL FURNISH THE COUNTY ENGINEER WITH GRADE SHEETS AND STATIONING FOR ALL HOUSE LATERALS, AND "T" OR "Y" BRANCHES AND SHALL PROVIDE STAKES FOR THEM AT THEIR PROPOSED LOCATIONS WITH STATIONING PLAINLY MARKED. THE HOUSE LATERALS SHALL BE CONSTRUCTED IN A STRAIGHT ALIGNMENT AT RIGHT ANGLES FROM THE MAIN LINE SEWER EXCEPT AS SHOWN ON THE PLANS. HOUSE LATERALS FROM CHIMNEYS SHALL HAVE AN ANGLE OF LESS THAN 45° WITH THE MAIN LINE SEWER. ANY CHANGE IN ALIGNMENT SHALL BE REQUESTED BY WRITING BY THE PRIVATE ENGINEER.
6. THE PRIVATE ENGINEER SHALL FURNISH THE HOUSE LATERAL DEPOT AT THE PROPERTY LINE BELOW THE TOP OF CURB RELEVATION FOR EACH HOUSE EXCEPT ON THE MAIN LINE.
7. BEFORE WORK CAN BE STARTED, THE CONTRACTOR MUST OBTAIN A PERMIT TO EXCAVATE IN COUNTY STREETS FROM THE L. A. COUNTY ROAD DEPT., DISTRICT OFFICE NO. 3, AND PAY A FEE TO THE COUNTY ENGINEER, ROOM 330, COUNTY ENGINEERING BUILDING, 100 WEST SECOND STREET OR MALIBU REGIONAL OFFICE, TO COVER THE COST OF CONSTRUCTION INSPECTION AND RECORD PLANS.
8. IF WORK IS TO BE DONE IN A STATE HIGHWAY, A PERMIT MUST BE OBTAINED FROM THE STATE OF CALIFORNIA, DIVISION OF HIGHWAYS, 100 SOUTH SHIHO STREET, LOS ANGELES, CALIFORNIA.
9. APPROVAL OF THIS PLAN BY THE COUNTY OF LOS ANGELES DOES NOT CONSTITUTE A REPRESENTATION AS TO THE ACCURACY OF THE LOCATION OF OR THE EXISTENCE OR NON-EXISTENCE OF ANY UNDERGROUND UTILITY PIPE, OR STRUCTURE WITHIN THE LIMITS OF THE PROJECT. THIS NOTE APPLIES TO ALL PAGES.
10. REFER TO SECTION 718.41 OF THE STANDARD SPECIFICATIONS, REGARDING SAFETY ORDERS.

TO BE CONSTRUCTED IN  
 23647 PACIFIC COAST HIGHWAY - MALIBU CALIFORNIA

**PRIVATE CONTRACT NO. 9101**

W.S. 91  
 3 SHEETS, 5 PAGES  
 SCALE: VERT. 1" = 4' DEC., 1974  
 HORIZ. 1" = 40'  
 PREPARED IN THE OFFICES OF  
 POMEROY JOHNSON & DAILEY  
 600 S. FAY BOULEVARD, ENCINENAS, CALIF.  
 BY: *Richard B. Pomero*  
 REG. C.E. No. 8173 J

**CONSTRUCTION NOTES:**

1. WORK SHALL BE CONSTRUCTED ACCORDING TO THE STANDARD SPECIFICATIONS FOR PUBLIC WORKS CONSTRUCTION AND SECTION 718.41, 1974 AND SHALL BE PROSECUTED ONLY IN THE PRESENCE OF THE COUNTY ENGINEER.
  2. THE CONTRACTOR SHALL NOTIFY THE ENGINEERING DIVISION BY TELEPHONE, IMMEDIATELY UPON RECEIVING A CALL AT LEAST TWENTY FOUR HOURS BEFORE STARTING ANY WORK UNDER THIS CONTRACT. (413) 474-7283
  3. HOUSE LATERALS TO BE CONSTRUCTED WITH INVERTS AT REEL SECTIONS AND GRADES AS NOTED.
  4. "T" OR "Y" BRANCHES MAY BE USED FOR CONNECTIONS TO MAINLINE SEWERS EXCEPT AS NOTED.
  5. ALL STRUCTURES SHALL BE SET ON SINK MANHOLES PER S-3 OR PRECAST CONCRETE MANHOLES PER S-36, EXCEPT AS NOTED.
  6. PRECAST SEWER ON THE PROPERTY LINE OR PROPERTY LINE PRODUCED AT RIGHT ANGLES TO THE SEWER LINE AT THE CENTER LINE OF THE MANHOLE.
  7. MANHOLE TOPS IN UNIMPROVED AREAS OF HWY TO BE SIX INCHES ABOVE FINISHED GRADE.
  8. VITRIFIED CLAY PIPE JOINTS SHALL BE TYPE "B", "C", OR "D" PER STANDARD SPECIFICATIONS SECTION 308.3.
  9. IF A POWER POLE IS WITHIN THREE FEET OF THE SEWER, THE SEWER SHALL BE ENCASED, PER S-39, CASE II TWO FEET ON EACH SIDE FROM THE POINT OF INTERFERENCE.
  10. IF DURING THE COURSE OF CONSTRUCTION IT IS DETERMINED THAT THERE IS LESS THAN FOUR FEET OF COVER OVER THE TOP OF A MAIN LINE OR HOUSE LATERAL V.C.P. SEWER WHICH IS NOT INDICATED ON THE PLANS, THE PIPE SHALL BE ENCASED PER S-39, CASE II UNLESS OTHERWISE APPROVED BY THE COUNTY ENGINEER.
  11. ALL JOINTS BETWEEN CAST-IRON PIPE AND VITRIFIED CLAY PIPE SHALL BE MADE WITH A RUBBER SLEEVE JOINT, TYPE "C", "D", OR "E", WITH THE SLEEVES IF NECESSARY PER STANDARD SPECIFICATIONS, SECTION 308.3.
  12. REFER TO SECTION 718.41 OF THE STANDARD SPECIFICATIONS AND SPECIAL PROVISIONS.
  13. RESURFACE ALL TRENCHES WITHIN PAVED AREAS TO MEET L.A. COUNTY ROAD DEPT. OR CALIFORNIA STATE HIGHWAY REQUIREMENTS IN ACCORDANCE WITH PERMITS.
- CONTRACTOR SHALL NOTIFY ALL UTILITIES COMPANIES 24 HRS. PRIOR TO EXCAVATION, FOR FIELD VERIFICATION.

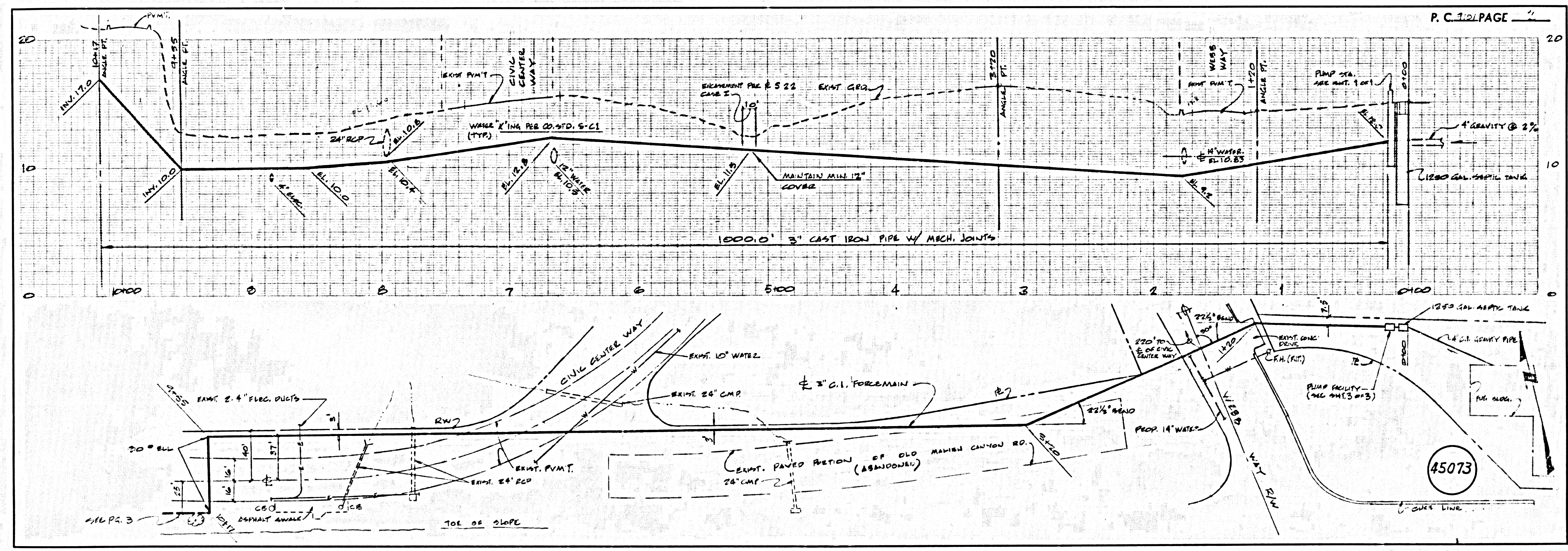
THE FOLLOWING LATEST REVISED STANDARD PLANS ON FILE IN THE OFFICE OF THE COUNTY ENGINEER SHALL APPLY IN THE CONSTRUCTION OF THIS PROJECT.

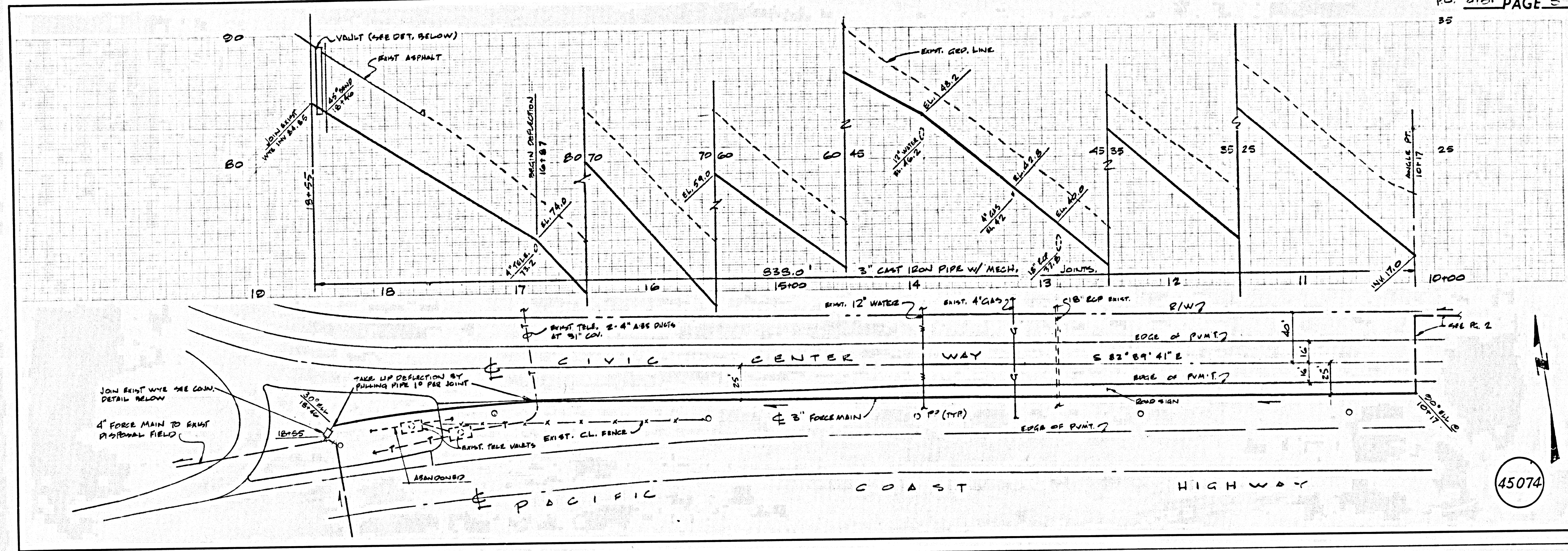
LEGEND	S-1
MINIMUM PUBLIC SAFETY REQUIREMENTS	S-2
SEWER MANHOLE	S-3
STANDARD MANHOLE STEP	S-17
BRIDGING FOR SEWER PIPE	S-21
CRADLING AND ENCASING	S-28
LINE OR THE MANHOLE	S-30
ALLOWABLE TRENCH WIDTHS	S-33
LOCKING MANHOLE FRAMES AND COVERS	S-35
NON-REINFORCED PRECAST CONCRETE MANHOLE	S-36

45072

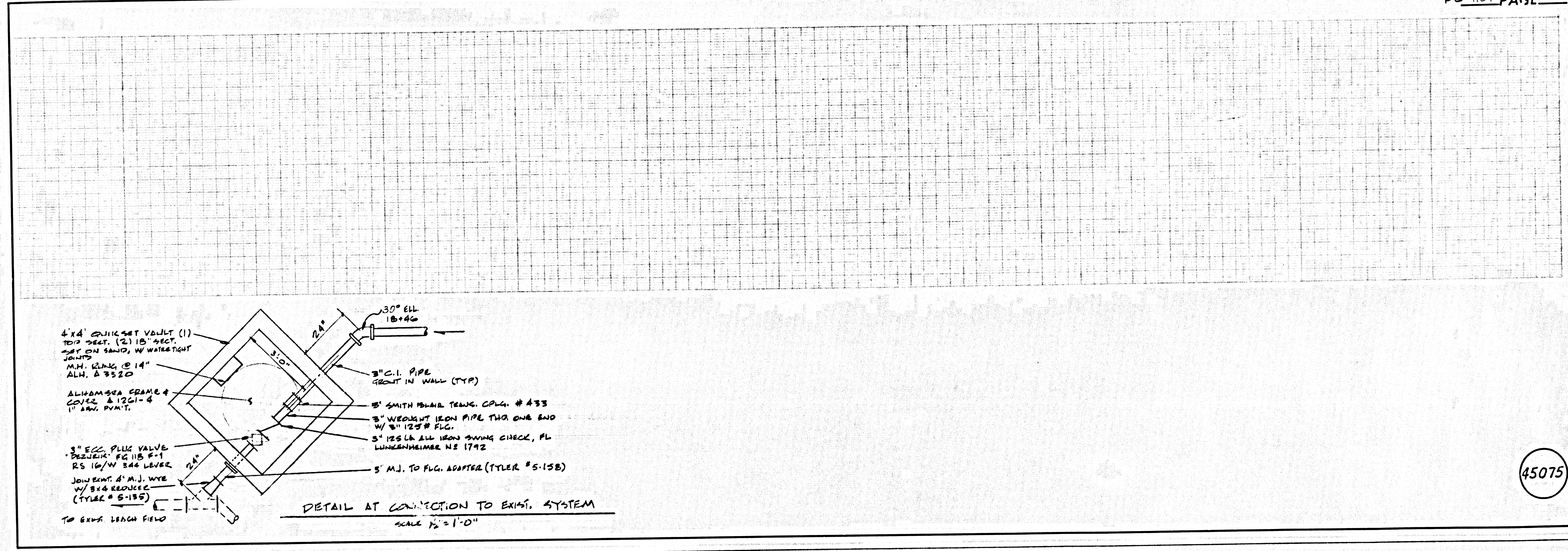
COUNTY OF LOS ANGELES, CALIFORNIA  
 COUNTY ENGINEER COUNTY HEALTH SERVICES DEPARTMENT

APPROVED: *David K. Rupp* 1/9/75 DATE APPROVED: *David K. Rupp* 1-9-75  
 CHECKED: *Richard B. Pomero* 1/9/75 DATE  
 REG. C.E. NO. 17722  
 MALIBU BLDG. DIST. 9.2 IN 0372.62

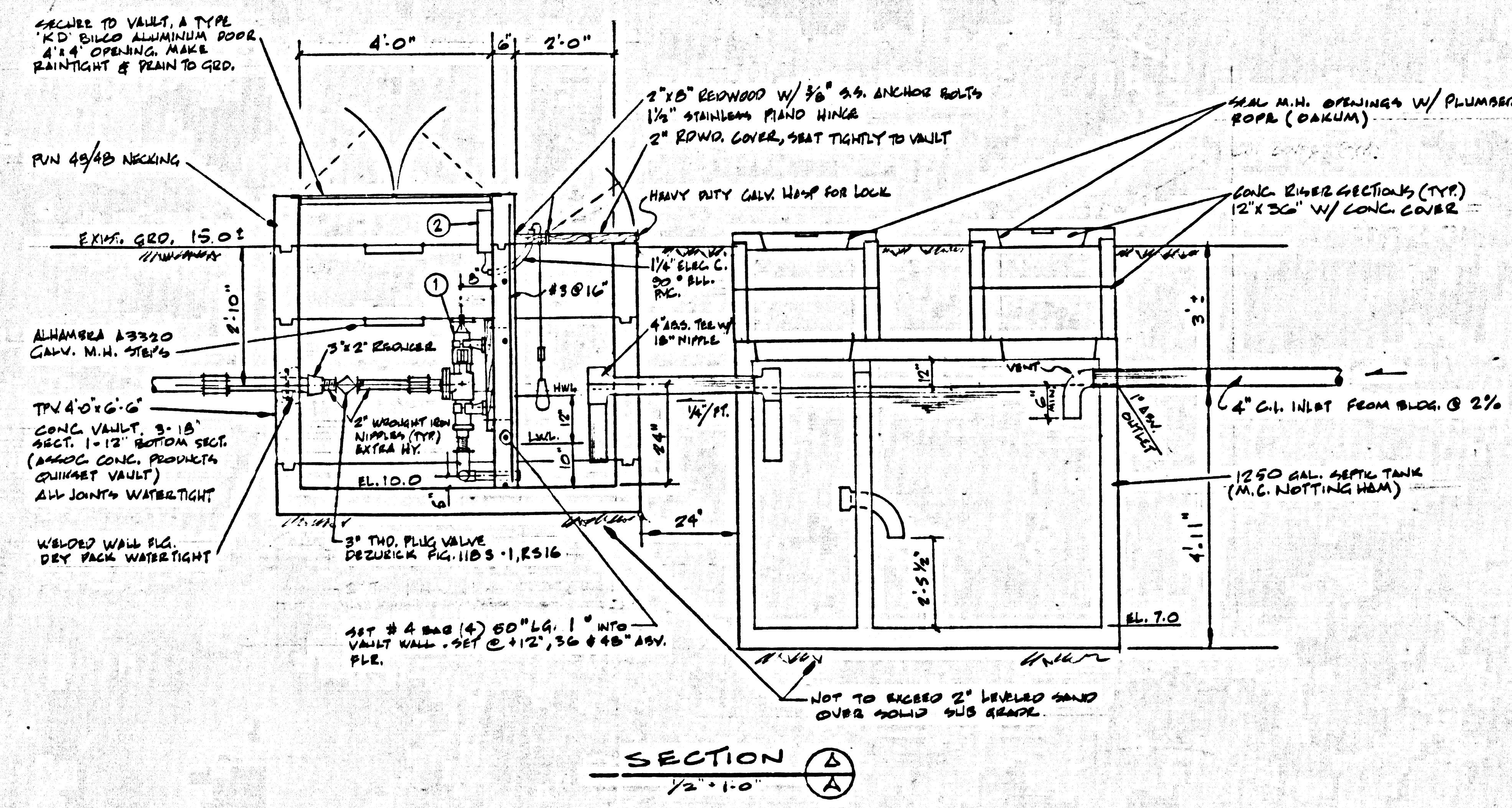
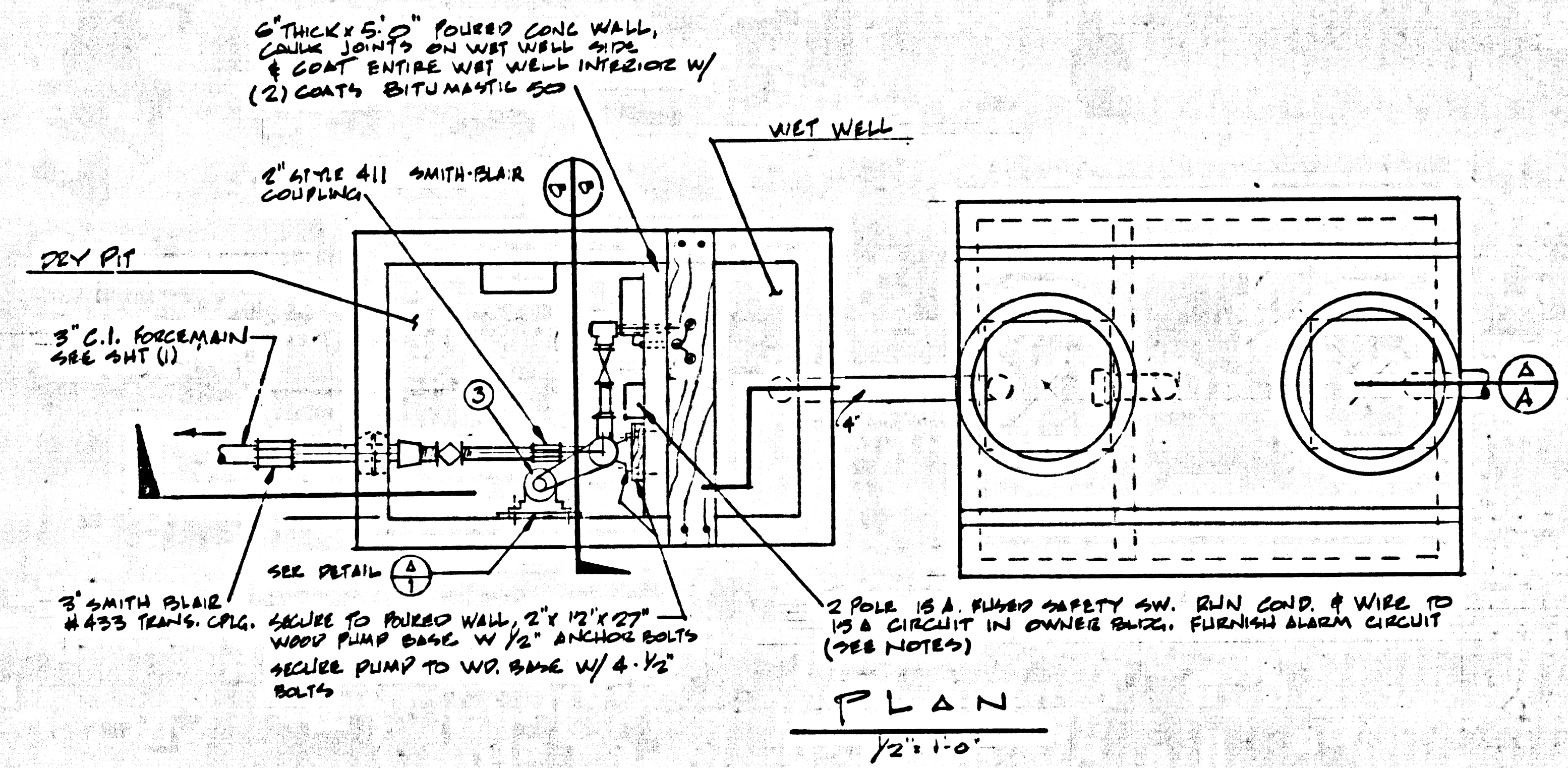
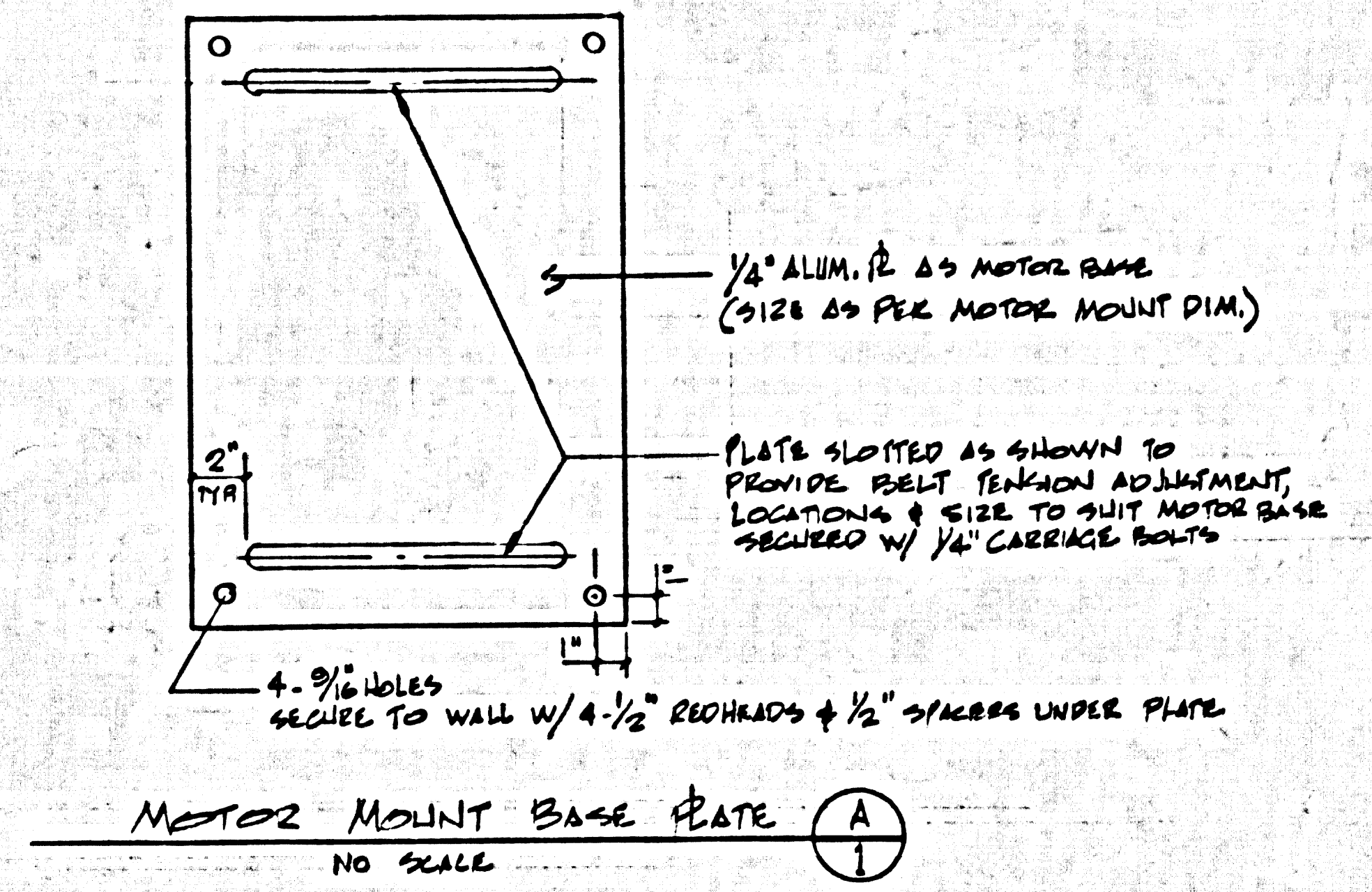
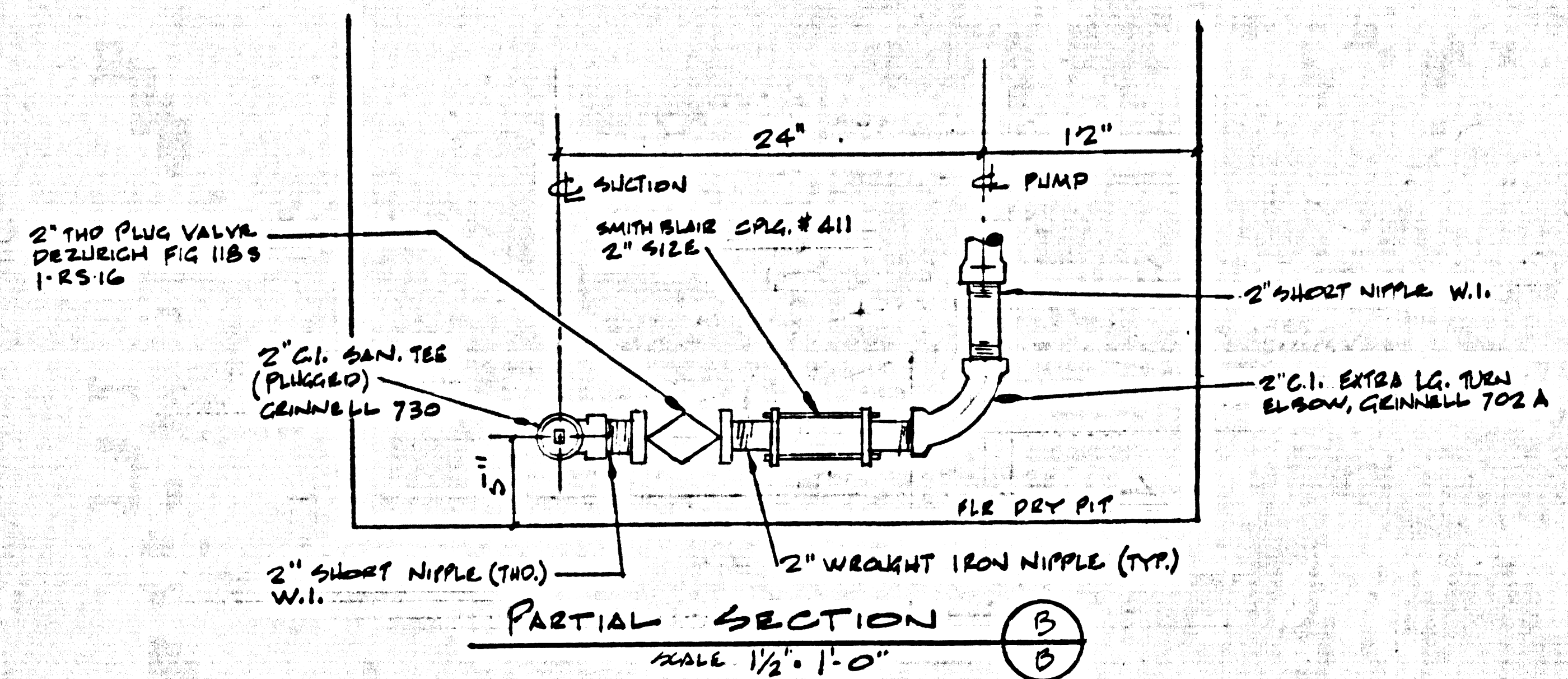




45074



45075



- EQUIPMENT**
- ITEM**
- Progressing Cavity Pump, w/2" min. bottom inlet and side outlet, 12 rpm @ 95' TDH @ 750 rpm, equal to Robbins & Myers Pump 11A with tool steel rotor and Sump V Stator (213-421-3739), or Heli-Flow Pump Company (714-979-0233).
  - Pump controls, float enclosed tilting mercury switch type, with NEMA 4 junction box, "on" float at HWL, "off" float 12" below HWL, alarm float 6" above HWL for full load operation of 1 HP 115 V motor, Hydromatic #3900.
  - Motor, 115/230 V single phase AC ODP induction type 1760 rpm for vertical operation, w/driver and driven sheaves, V belt and guard to turn pump in proper direction @ 750 rpm.
- Furnish and install a Red Alarm Light at Electric Panel in building, marked "Sewage Pump," to light when sewage level in wet well is 6" above HWL.
- Cast Iron Pipe (CIP) shall be per Fed. Spec. WWP 421, w/mech. Jt. ends and fittings.
- Wrought Iron Pipe (W.I.) shall be extra heavy threaded wrought iron pipe per Fed. Spec. WWP 441 C(2) Class 250 or 22.
- NOTES**
- GENERAL - CONTRACTOR SHALL**
- Schedule work with Owner 24 hours in Advance (213-624-8624, Ron Spinoglio).
  - Obtain and pay for all permits.
  - Assume liability for injury or damages by his actions or omissions.
  - Comply with applicable City, County and State regulations and codes.
  - Advance and coordinate any required inspections.
  - Excavate for new septic tank and vault, and remove excess spoil from area.
  - Compact backfill to 90% relative density.
  - Furnish covers, tank and vault and appurtenances, pipe and fittings necessary to complete installation (for equipment, see specifications).
  - Grout all pipe to conc. wall connections to watertight condition.
  - Comply with Std. Specs. for Public Works Construction by APWA-AGC unless otherwise specified.
  - Protect all utilities and structures whether or not shown on Plans.
  - Remove debris and leave site in clean condition.
  - Sewers to be tested for leakage per Sec. 906-1.4 of Standard Specs. and Special Provisions.
  - Prior to construction, the contractor shall at his expense obtain a "Permit to Excavate" from the State of California, Division of Industrial Safety.

NOTE - THE 1 HP ROBBINS & MYERS PUMP RATED AT 95 TDH AND 12 GPM IS TENTATIVELY APPROVED, HOWEVER OCCUPANCY TO THE PUMP WILL BE WITH HELD UNTIL IT IS DEMONSTRATED THROUGH ACTUAL TESTS THAT THIS PUMP WILL OPERATE AT ITS RATED CAPACITY DURING TIMES WHEN BOTH PUMPS ON THE FORCEMAIN SYSTEM ARE OPERATING SIMULTANEOUSLY.

45076

P.C. 9101

UNION FEDERAL SAVINGS			
SEWAGE DISPOSAL PUMP STATION			
23647 PACIFIC COAST HIGHWAY - MALIBU, CALIF.			
POMEROY, JOHNSTON AND BAILEY			
CIVIL AND CHEMICAL ENGINEERS			
660 SO. FAIR OAKS AVE. PASADENA, CALIFORNIA			
DESIGNED BY G.B.L.	APPROVED BY Carl B. Johnston	APPROVED BY 11/17/75	DATE 11-23-74
SCALE 1/2" = 1'-0"	DATE 11-23-74	DATE 11-23-74	DATE 11-23-74
SHEET NO. 1122-2	DATE	DATE	DATE