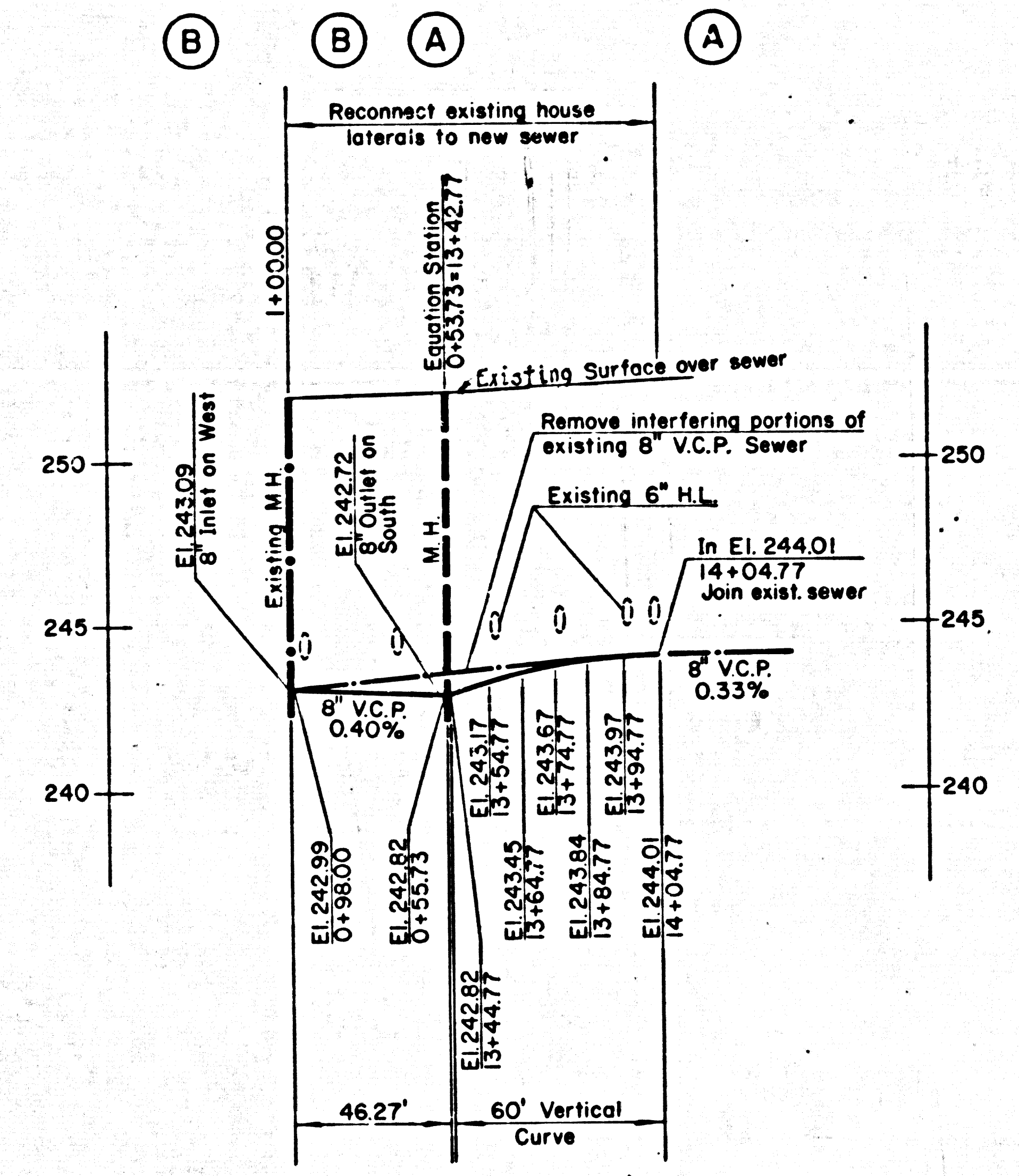
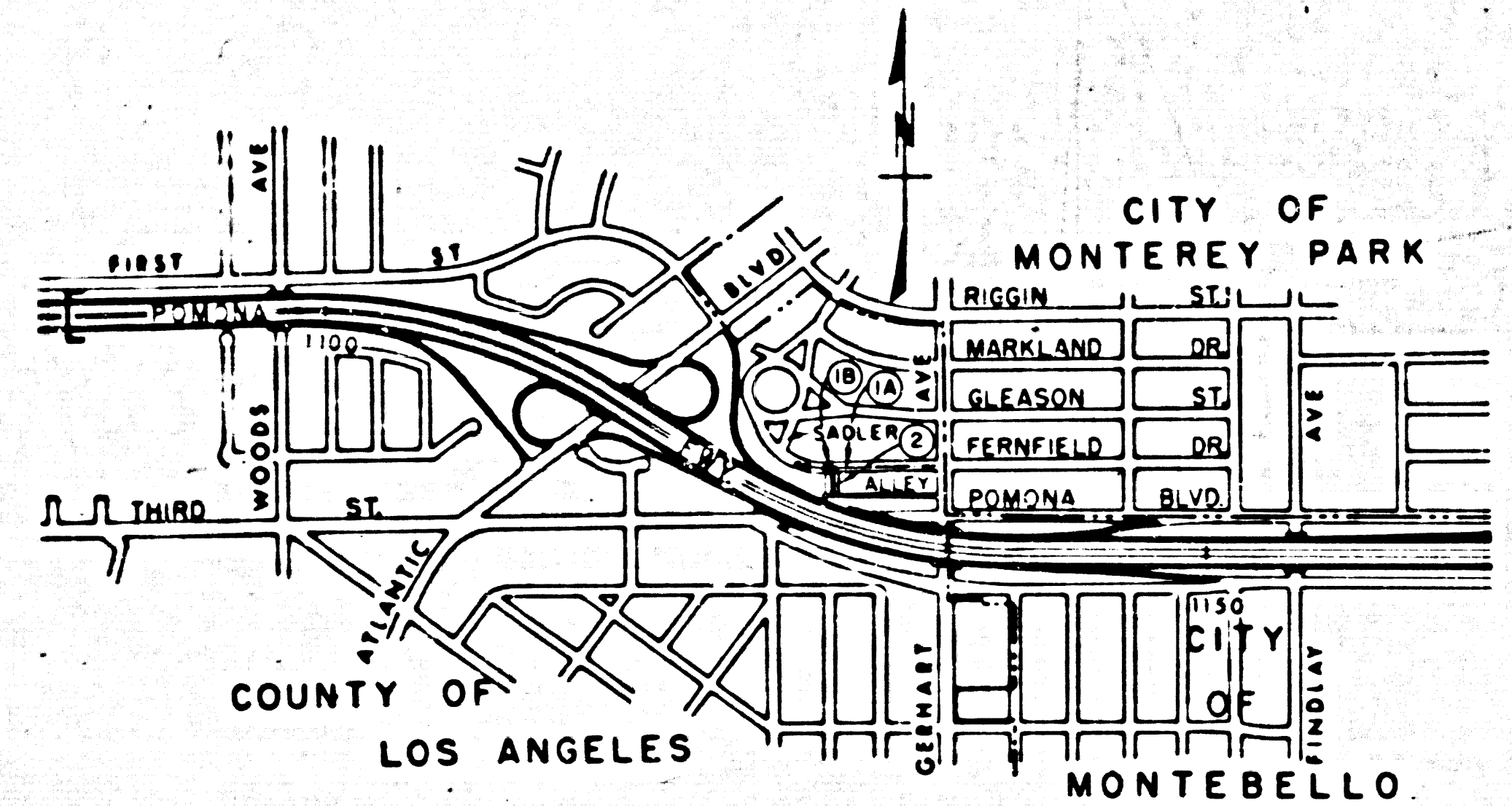


Dist.	City	Sheet	Project	Sheet	Total
C7	LA	60	37/97		

PROJECT ENGINEER: *Paul W. Smith*  
 REGISTERED CIVIL ENGINEER  
 NO. 11443  
 DATE APPROVED: \_\_\_\_\_

B.M. BY-6753 ELEV. 256.51 L.A. Co. Rd. Dept. p.17  
 City of Monterey Park, 10 ft. west of west curb  
 Atlantic Blvd, 62 ft. north and 35 ft. west of  
 C/L Int. Atlantic Blvd. and East First Street  
 and 9 ft. north of BCR in N.W. curb. Br. cap,  
 flush, in PCC walk.  
 RIVERA QUAD. 1970

- LEGEND**
- Sanitary sewers and manholes to be constructed.
  - Existing sanitary sewers and manholes.
  - House lateral to be constructed.
  - Existing house lateral.
  - Existing house lateral to join new sanitary sewer.
  - Existing water line.
  - Existing natural gas line.
  - Existing telephone line.



PROFILE, ALIGNMENT AND GRADE OF  
**SANITARY SEWERS**  
 TO BE CONSTRUCTED IN  
**FERNFIELD DRIVE**  
**PRIVATE CONTRACT NO. 9104**  
 W.S. 36  
 SHEET S-1 OF 3 SHEETS  
 SCALE: VERT. 1"=4'  
 HORIZ. 1"=40'

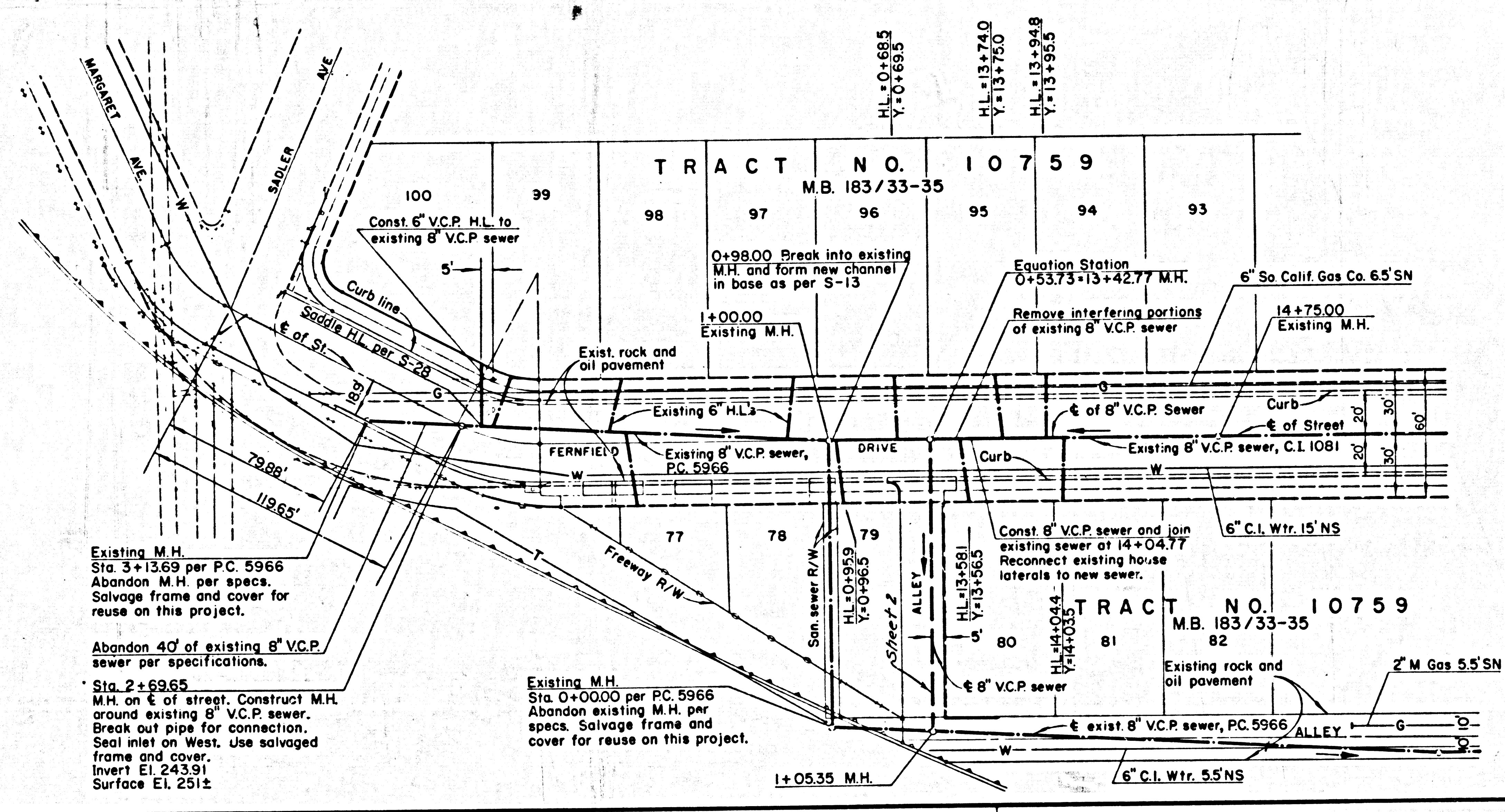
COUNTY OF LOS ANGELES, CALIFORNIA  
 HARVEY T. BRANDT, COUNTY ENGINEER    JOHN D. PARKHURST, CHIEF ENGINEER  
 APPROVED: *Paul W. Smith*    APPROVED: *Michael J. ...*  
 ASSISTANT DIVISION ENGINEER    OFFICE ENGINEER  
 CHECKED: *Michael J. ...* 2-9-76 (DATE)  
 REG. C.E. NO. 22022  
 SAN GABRIEL VALLEY BLDG. DIST. 6

- GENERAL NOTES:**
- ELEVATIONS ARE IN FEET ABOVE U.S.C. AND G.S. SEA LEVEL DATUM OF 1929.
  - NO REVISIONS SHALL BE MADE IN THESE PLANS WITHOUT THE APPROVAL OF THE COUNTY ENGINEER.
  - NO REPRESENTATIVE OF THE COUNTY ENGINEER WILL SURVEY OR LAY OUT ANY PORTION OF THE WORK.
  - GRADES TO WHICH THIS IMPROVEMENT IS TO BE CONSTRUCTED ARE SHOWN ON PLANS AND PROFILES.
  - THE STATE SHALL FURNISH THE COUNTY ENGINEER WITH GRADE SHEETS AND STATIONING FOR ALL HOUSE LATERALS AND "Y" OR "T" BRANCHES AND SHALL PROVIDE STAKES FOR THEM AT THEIR PROPER LOCATIONS WITH STATIONING PLAINLY MARKED. ALL HOUSE LATERALS SHALL BE CONSTRUCTED IN A STRAIGHT ALIGNMENT AT RIGHT ANGLES FROM THE MAIN LINE SEWER EXCEPT AS SHOWN ON THE PLANS.
  - THE STATE SHALL FURNISH THE HOUSE LATERAL DEPTH AT THE PROPERTY LINE BELOW THE TOP OF CURB ELEVATION FOR EACH NEW HOUSE LATERAL ON THE GRADE SHEET.
  - BEFORE WORK CAN BE STARTED, THE CONTRACTOR MUST OBTAIN A PERMIT TO EXCAVATE IN COUNTY STREETS FROM THE L.A. COUNTY ROAD DEPT., DISTRICT OFFICE NO. 12, AND PAY A FEE TO THE COUNTY ENGINEER, 108 WEST 2ND ST. LOS ANGELES, CALIFORNIA, OR 9508 N. KAUFFMAN AVENUE, TEMPLE CITY, REGIONAL OFFICE, TO COVER THE COST OF CONSTRUCTION INSPECTION AND RECORD PLANS.
  - APPROVAL OF THIS PLAN BY THE COUNTY OF LOS ANGELES DOES NOT CONSTITUTE A REPRESENTATION AS TO THE ACCURACY OF THE LOCATION OF OR THE EXISTENCE OR NON-EXISTENCE OF ANY UNDERGROUND UTILITY PIPE, OR STRUCTURE WITHIN THE LIMITS OF THIS PROJECT. THIS NOTE APPLIES TO ALL PAGES.
  - REFER TO SECTION 7-10.4.1 OF THE STANDARD SPECIFICATIONS FOR PUBLIC WORKS CONSTRUCTION, REGARDING SAFETY ORDERS.

- CONSTRUCTION NOTES:**
- HOUSE LATERALS TO BE CONSTRUCTED ON 2.0% GRADE FROM MAINLINE SEWERS EXCEPT AS NOTED.
  - WYE OR TEE BRANCHES MAY BE USED FOR CONNECTIONS TO MAINLINE SEWER.
  - ALL STRUCTURES SHALL BE BRICK MANHOLE PER S-3 OR PRECAST CONCRETE MANHOLES PER S-36, EXCEPT AS NOTED.
  - VITRIFIED CLAY PIPE JOINTS SHALL BE TYPE "D", "F" OR "G" PER STANDARD SPECIFICATIONS FOR PUBLIC WORKS CONSTRUCTION. (1973 ED, 1974 SUPPL.)
  - IF A POWER POLE IS WITHIN THREE FEET OF THE SEWER, THE SEWER SHALL BE ENCASED PER S-23, CASE II, MISC. DETAILS, TWO FEET ON EACH SIDE FROM THE POINT OF INTERFERENCE.
  - SEWERS TO BE TESTED FOR LEAKAGE PER STANDARD SPECIFICATIONS FOR PUBLIC WORKS CONSTRUCTION (SECTION 306-1.4).
  - RESURFACE ALL TRENCHES WITHIN PAVED AREAS TO MEET L.A. COUNTY ROAD DEPT. REQUIREMENTS IN ACCORDANCE WITH PERMITS.

**SEWER QUANTITIES**

Sheet No.	Location Description	Abandon Manhole	Salvage Frame and Cover	Reset Manhole Frame and Cover	Remold Manhole	6" Clay Sewer Pipe	8" Clay Sewer Pipe	Sewer Manhole	Trench Resurfacing
	Fernfield Drive	Ea.	Ea.	Ea.	Ea.	LF.	LF.	Ea.	S.Y.
1	Sta. 2+69.65 to Sta. 3+13.69	1	1	1		30		1	
1	Sta. 0+53.73 to 1+00.00 Sta. 13+42.77 to Sta. 14+04.77	1	1		1		102	1	30
2	Sta. 1+05.35 to Sta. 2+40.70						132	1	
<b>Totals</b>		<b>2</b>	<b>2</b>	<b>1</b>	<b>1</b>	<b>30</b>	<b>234</b>	<b>3</b>	<b>30</b>



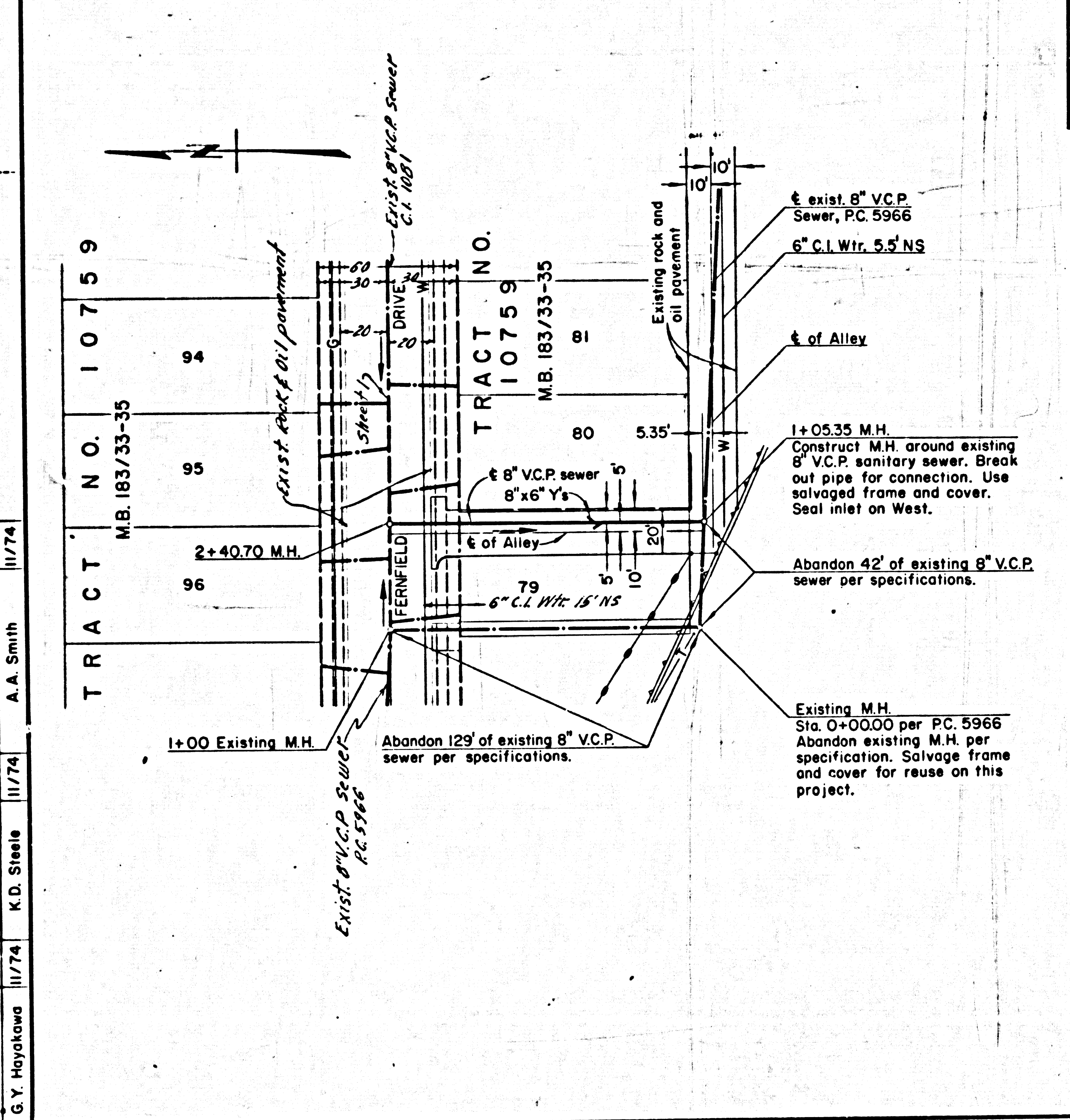
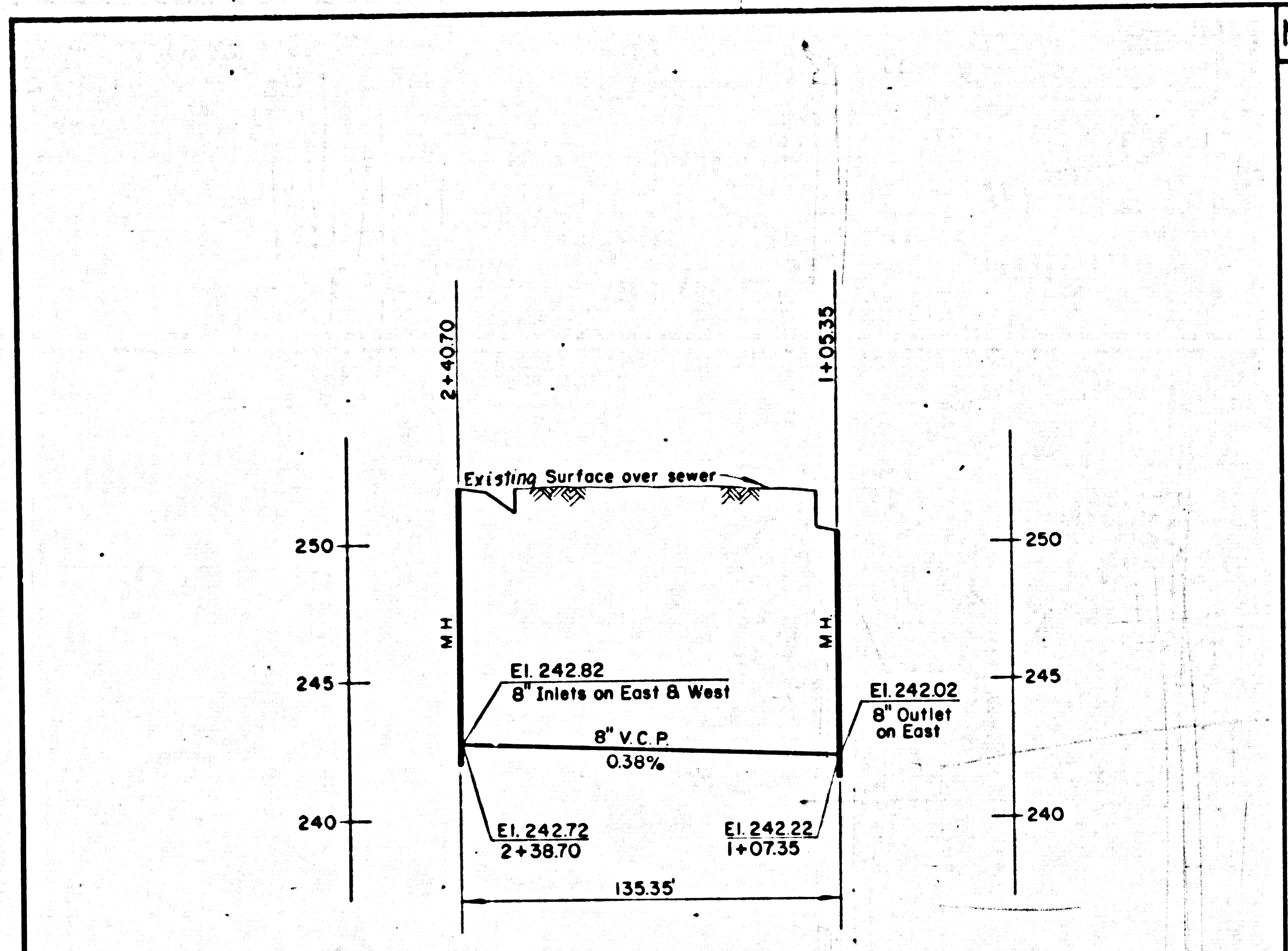
**SEWER PLANS** Sht. 1 of 3  
 07218 - 217411

Approved: *A. A. Smith* 11/74  
 Checked: *K. D. Steele* 11/74  
 Prepared: *G. Y. Hayakawa* 11/74



Dist.	County	Route	Post miles Total Project	Sheet No.	Total Sheets
07	L.A.	60	37/97		

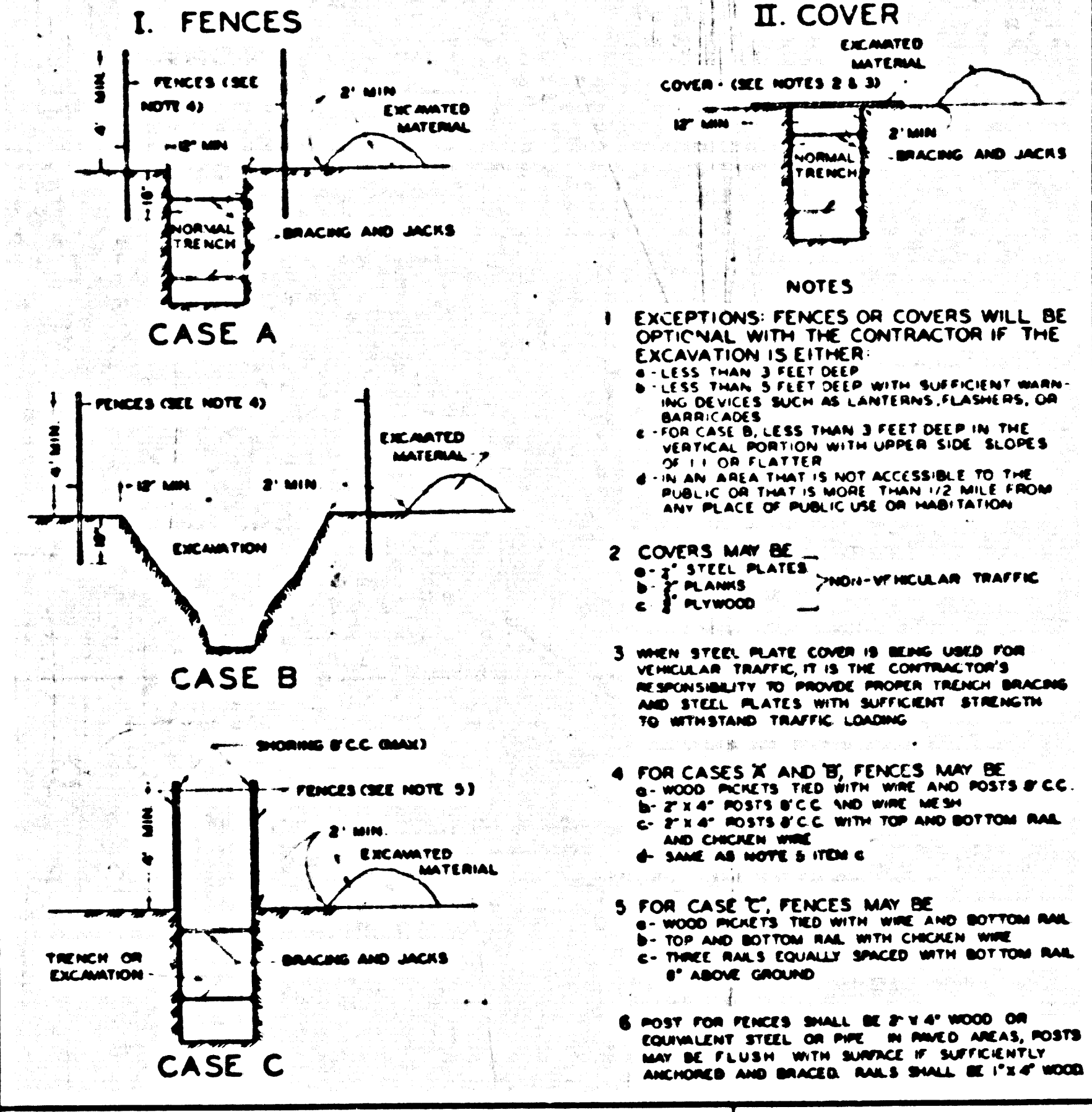
*Paul W. C. ...*  
 PROJECT ENGINEER REGISTERED CIVIL ENGINEER  
 NO. 11445  
 DATE APPROVED: \_\_\_\_\_



Drawn	11/74
Approved	A.A. Smith
Drawn	11/74
Approved	K.D. Steele
Drawn	11/74
Approved	G.Y. Hoyakawa

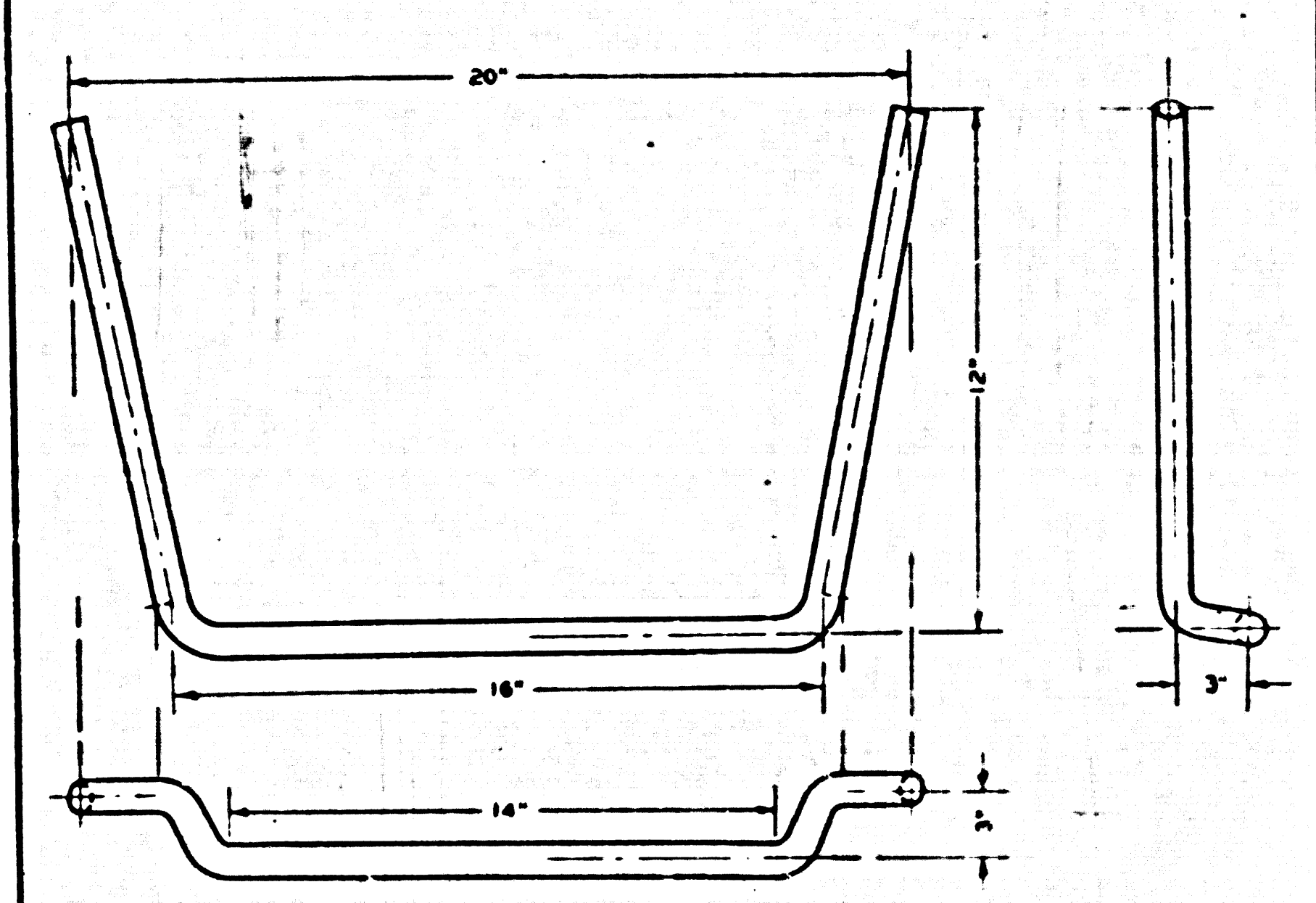
### MINIMUM PUBLIC SAFETY REQUIREMENTS

PRIOR TO THE END OF EACH WORK DAY THE CONTRACTOR SHALL EITHER BACKFILL THE TRENCH OR ERECT AND MAINTAIN FENCES OR COVERS. THE FOLLOWING ARE MINIMUM ACCEPTABLE MEASURES ONLY, AND COMPLIANCE WITH THIS STANDARD DOES NOT RELIEVE THE CONTRACTOR OF HIS OBLIGATION TO PROTECT THE PUBLIC BY ALL NECESSARY MEANS.



DEPARTMENT OF COUNTY ENGINEER, COUNTY OF LOS ANGELES  
 SANITATION DIVISION  
 COUNTY ENGINEER STANDARD S-2  
 DATE: OCTOBER 23, 1964  
 REVISED TO: MARCH 1968

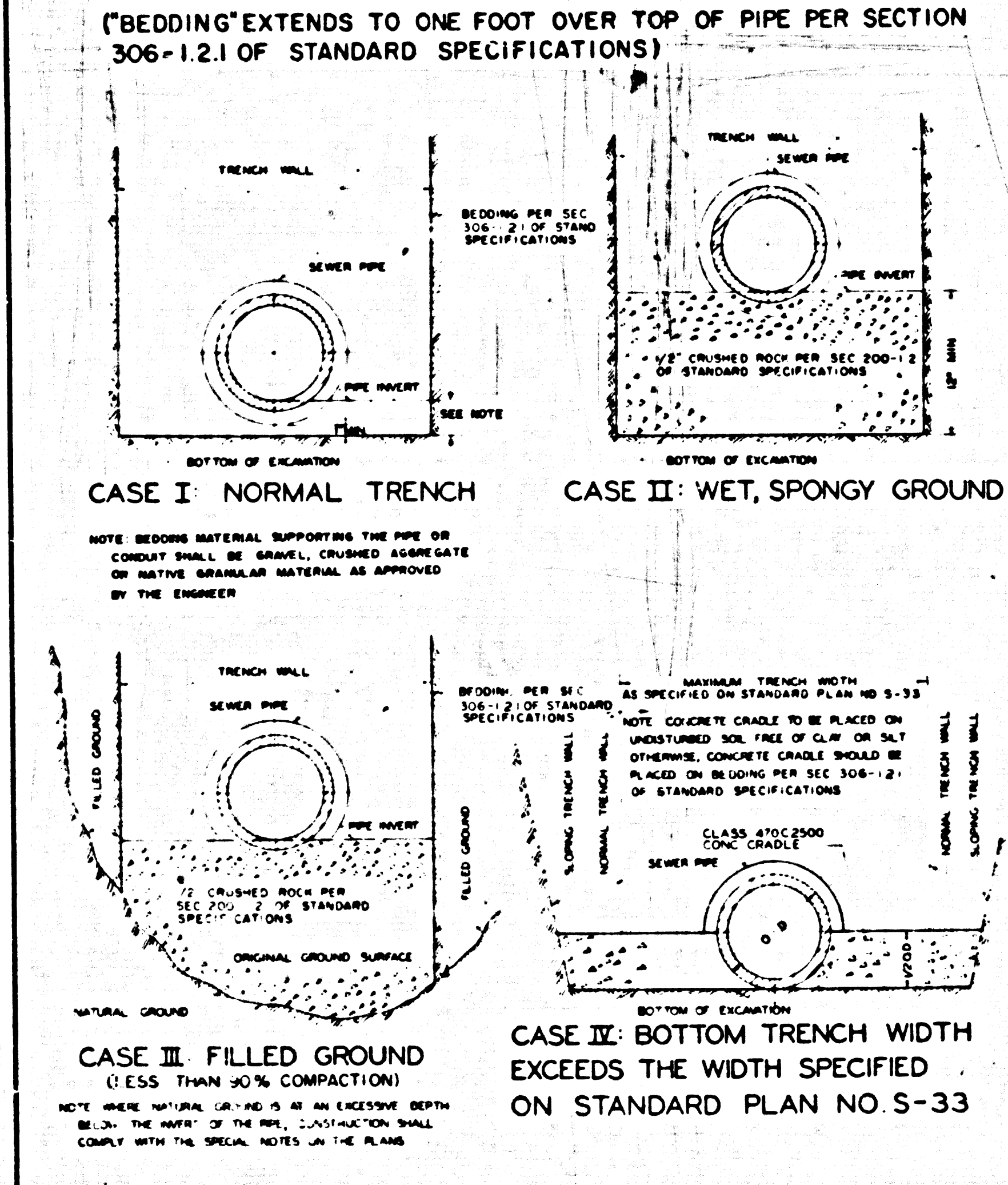
### STANDARD MANHOLE STEP



NOTE:  
 MATERIAL FOR THE STANDARD MANHOLE STEP SHALL BE ONE OF THE FOLLOWING:  
 1. 3/4"  $\phi$  STEEL CONFORMING TO ASTM A15 OR A107 GALVANIZED AFTER FABRICATION IN ACCORDANCE WITH ASTM A123  
 2. 3/4"  $\phi$  ALUMINUM ALLOY 6061-T6, CONFORMING WITH ASTM B-211 OR B-221. THE PORTIONS OF THE ALUMINUM STEP TO BE EMBEDDED IN CONCRETE OR MORTAR SHALL BE GIVEN ONE COAT OF ZINC CHROMATE PRIMER. THE PRIMER SHALL BE ALLOWED TO DRY BEFORE THE STEP IS PLACED IN THE CONCRETE OR MORTAR.  
 3. 3/4"  $\phi$  OR 3/4" SQUARE OR EQUIVALENT CROSS SECTIONAL AREA WROUGHT IRON CONFORMING TO ASTM A-207.

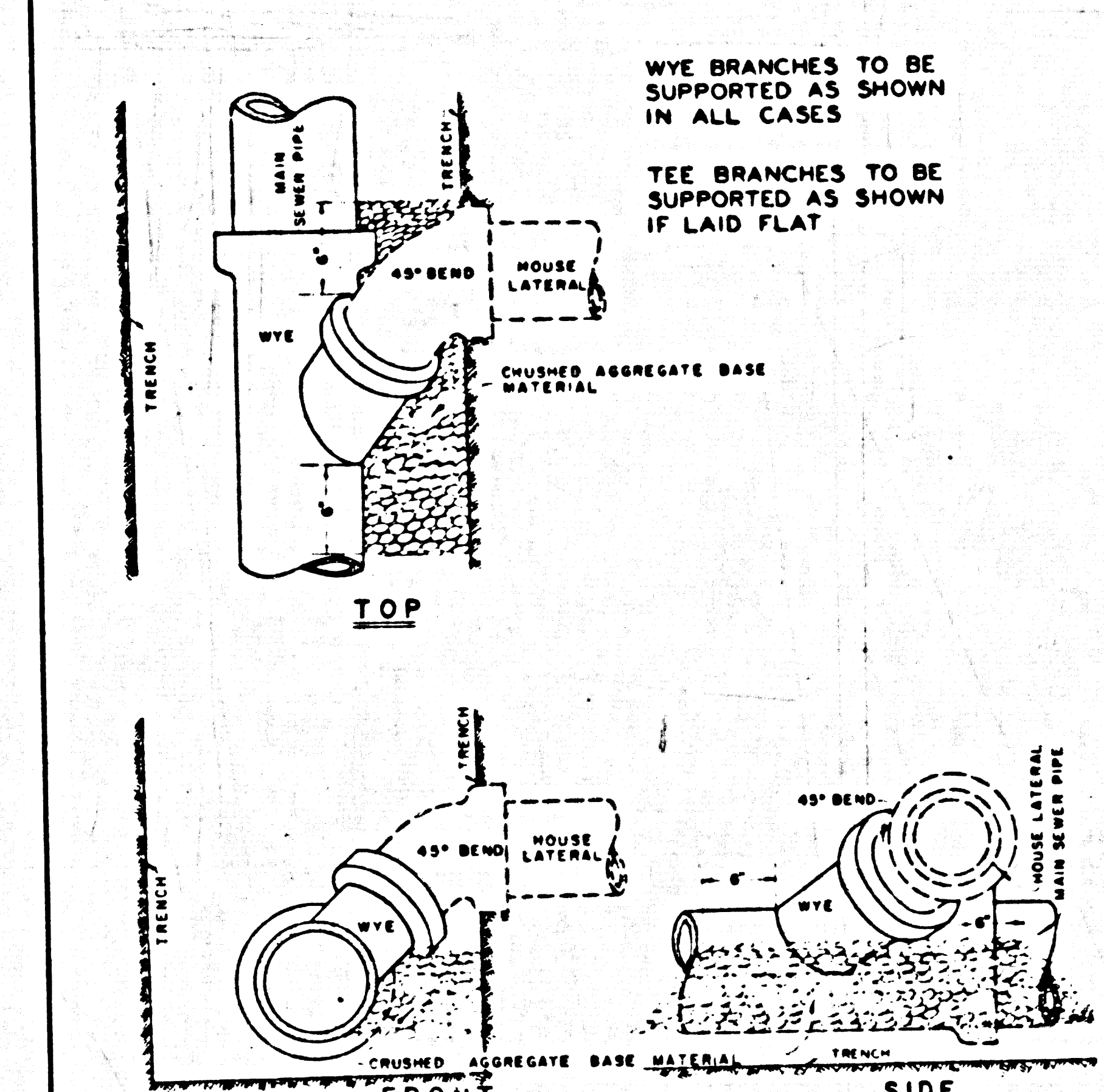
DEPARTMENT OF COUNTY ENGINEER, COUNTY OF LOS ANGELES  
 SANITATION DIVISION  
 COUNTY ENGINEER STANDARD S-17  
 DATE: OCTOBER 23, 1964  
 REVISED TO: 8/27, 10/58

### BEDDING FOR SEWER PIPE



DEPARTMENT OF COUNTY ENGINEER, COUNTY OF LOS ANGELES  
 SANITATION DIVISION  
 COUNTY ENGINEER STANDARD S-21  
 DATE: OCTOBER 23, 1964  
 REVISED TO: 1-28, 5-1, 12-70, 4/72, 5-74

### WYE OR TEE SUPPORT



DEPARTMENT OF COUNTY ENGINEER, COUNTY OF LOS ANGELES  
 SANITATION DIVISION  
 COUNTY ENGINEER STANDARD S-26  
 DATE: OCTOBER 23, 1964  
 REVISED TO: JANUARY 1968

## SEWER PLANS Sht. 2 of 3

07218 - 217411



