

TO BE CONSTRUCTED IN
TRACT NO. 32434

PRIVATE CONTRACT NO. 9108

W.S. 44
 1 SHEETS; 2 PAGES
 SCALE: VERT. 1"=4' APRIL, 1975
 HORIZ. 1"=40'
 PREPARED IN THE OFFICES OF
GILBERT ENGINEERING COMPANY
 3500 E. COLORADO BOULEVARD
 PASADENA, CALIF. 91107
 BY: *H. J. Gilbert*
 REG. C. E. No. 1797

THE FOLLOWING LATEST REVISED STANDARD PLANS ON FILE IN THE OFFICE OF THE COUNTY ENGINEER SHALL APPLY IN THE CONSTRUCTION OF THIS PROJECT.

LEGEND	NO.
MINIMUM PUBLIC SAFETY REQUIREMENTS	8-1
BRICK MANHOLE	8-2
STANDARD MANHOLE STEP	8-17
BEDDING FOR SEWER PIPE	8-21
GRADING AND ENCASING	8-22
PIPE OF THE SUPPORT	8-23
ALLOWABLE TRENCH WIDTHS	8-24
LOCKING MANHOLE FRAME AND COVER	8-25
NON-REINFORCED PRECAST CONCRETE MANHOLE	8-26
RECTANGULAR SHALLOW MANHOLE	8-27
RECTANGULAR MANHOLE FRAME AND COVER	8-28
PRECAST SHALLOW MANHOLE	8-29

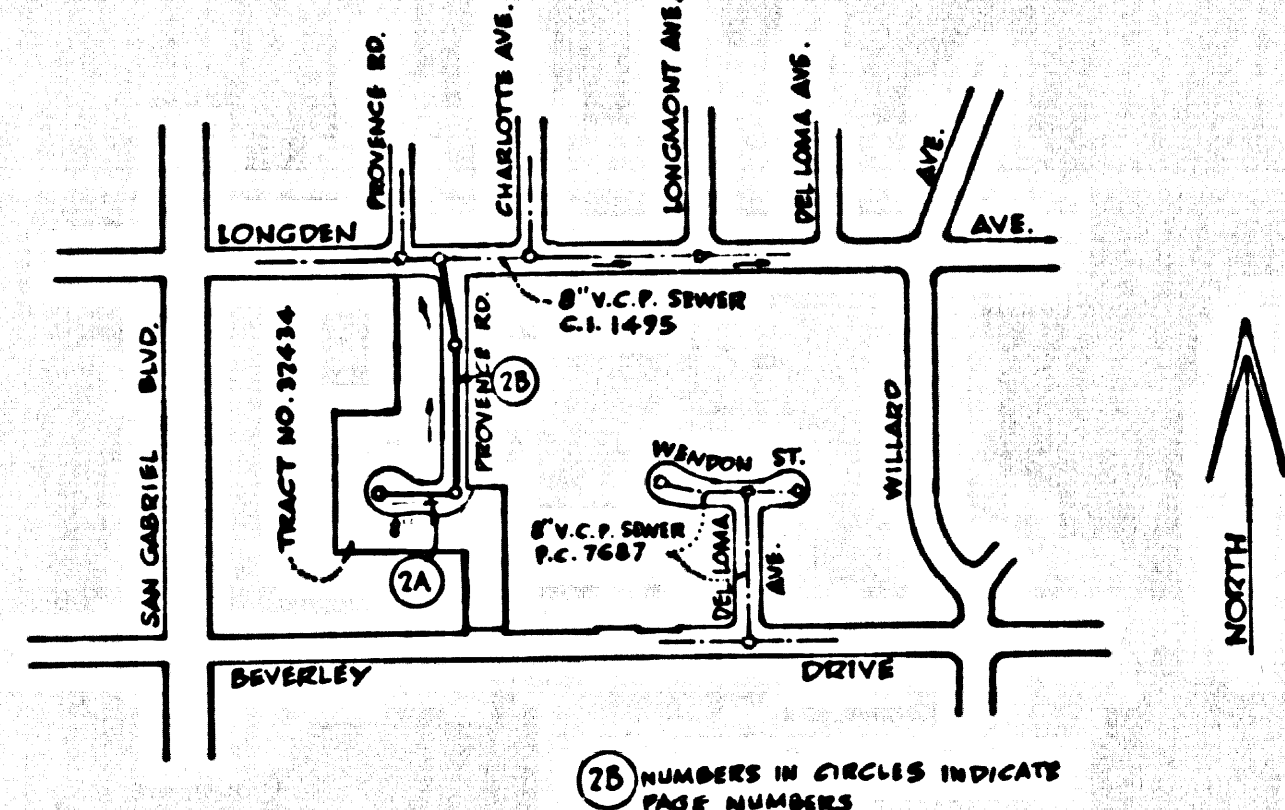
4510

COUNTY OF LOS ANGELES, CALIFORNIA
 HARVEY T. BRANDT, COUNTY ENGINEER JOHN D. PARKURST, CHIEF ENGINEER
 APPROVED *Harvey T. Brandt* 5-14-75 APPROVED *John D. Parkurst* 5-14-75
 REG. C. E. NO. 10653 REG. C. E. NO. 15

CHECKED *Bernard J. Vadeby* 5/14/75
 REG. C. E. NO. 10653

TEMPLE CITY BLDG. DIST. 5 J. N. 0250.02

B.M. DG716A ELEV. 472.854
 SPIKE IN EAST CURB 12' NORTH OF S.C.R. AT
 NORTHEAST CORNER OF SAN GABRIEL BOULEVARD
 AND BEVERLY DRIVE MARKED (TE 621)
 ARCADIA QUAD. 1970



INDEX MAP
 P.C. 9108
 SCALE: 1"=600'

COUNTY SANITATION DISTRICTS SHALL BE NOTIFIED 72 HOURS PRIOR TO THE FOLLOWING SO THAT REQUIRED INSPECTION CAN BE MADE.
 (PHONE: 962-8005 - 638-1104)

ACCEPTANCE OF THE PROJECT

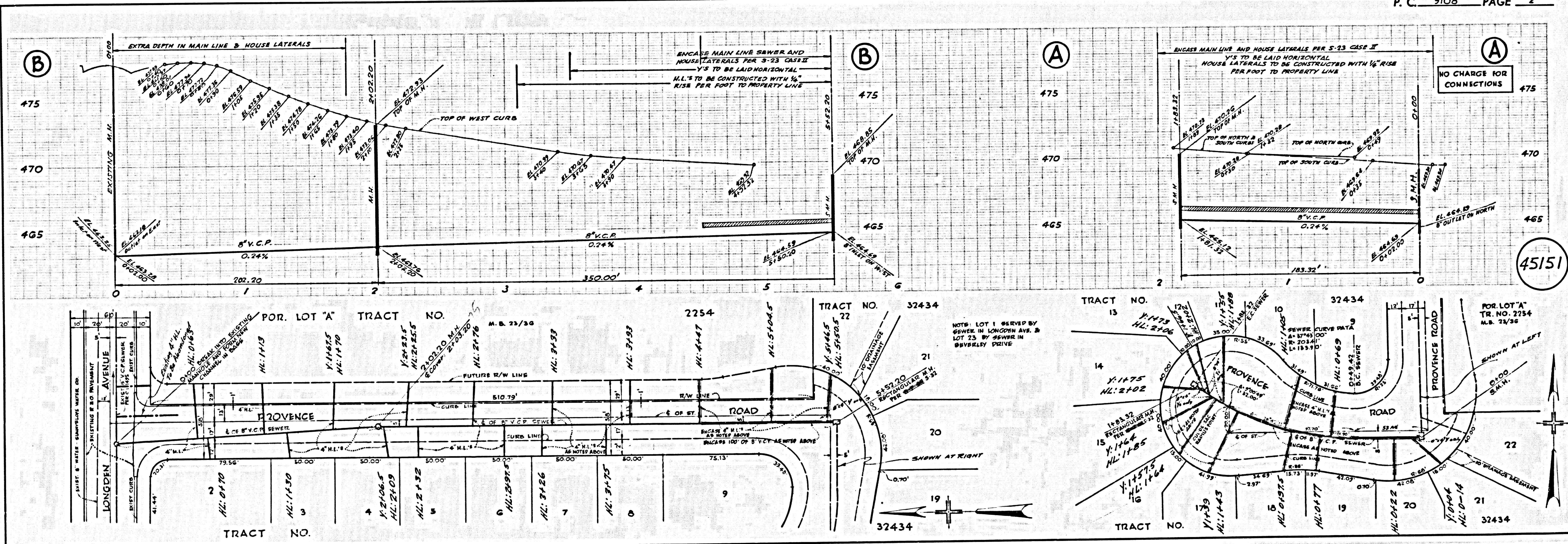
NO CONNECTION FOR THE DISPOSAL OF INDUSTRIAL WASTES SHALL BE MADE TO SEWERS SHOWN ON THESE PLANS UNTIL A PERMIT FOR INDUSTRIAL WASTE WATER DISCHARGE HAS BEEN ISSUED BY THE SANITATION DISTRICTS FOR SAID CONNECTION.

GENERAL NOTES:

- ELEVATIONS ARE IN FEET ABOVE U.S.C. & G.S. SEA LEVEL DATUM OF 1929.
- NO REVISIONS SHALL BE MADE IN THESE PLANS WITHOUT THE APPROVAL OF THE COUNTY ENGINEER.
- NO REPRESENTATIVE OF THE COUNTY ENGINEER WILL SURVEY OR LAY OUT ANY PORTION OF THE WORK.
- GRADES TO WHICH THIS IMPROVEMENT IS TO BE CONSTRUCTED ARE SHOWN ON PLANS AND PROFILES. GRADE POINTS FOR TOP OF CURB, CENTER LINE OF STREETS, OR CENTER LINE OF ALLEYS ARE SHOWN BY CIRCLES ON PROFILES. AT ALL POINTS BETWEEN DESIGNATED POINTS THE GRADE SHALL BE ESTABLISHED SO AS TO CONFORM TO A STRAIGHT LINE DRAWN BETWEEN SAID DESIGNATED POINTS.
- THE PRIVATE ENGINEER SHALL FURNISH THE COUNTY ENGINEER WITH GRADE SHEETS AND STATIONING FOR ALL HOUSE LATERALS AND "T" OR "Y" BRANCHES AND SHALL PROVIDE STAKES FOR THEM AT THEIR PROPER LOCATIONS WITH STATIONING PLAINLY MARKED. ALL HOUSE LATERALS SHALL BE CONSTRUCTED IN A STRAIGHT ALIGNMENT AT RIGHT ANGLES FROM THE MAIN LINE SEWER EXCEPT AS SHOWN ON THE PLANS. HOUSE LATERALS FROM CHIMNEYS SHALL NOT HAVE AN ANGLE OF LESS THAN 45° WITH THE MAIN LINE SEWER. ANY CHANGE IN ALIGNMENT SHALL BE REQUESTED IN WRITING BY THE PRIVATE ENGINEER.
- THE PRIVATE ENGINEER SHALL FURNISH THE HOUSE LATERAL DEPTH AT THE PROPERTY LINE BELOW THE TOP OF CURB ELEVATION FOR EACH HOUSE LATERAL ON THE GRADE SHEET.
- BEFORE WORK CAN BE STARTED, THE CONTRACTOR MUST OBTAIN A PERMIT TO EXCAVATE IN COUNTY STREETS FROM THE L.A. COUNTY ROAD DEPT., OFFICE NO. 8, AND PAY A FEE TO THE COUNTY ENGINEER, SAN GABRIEL VALLEY REGIONAL OFFICE, OFFICE NO. 8, AND THE COST OF CONSTRUCTION INSPECTION AND RECORD PLANS.
- IF WORK IS TO BE DONE ON A STATE HIGHWAY, A PERMIT MUST BE OBTAINED FROM THE STATE OF CALIFORNIA, DIVISION OF HIGHWAYS, 130 SOUTH SPRING STREET, LOS ANGELES, CALIFORNIA.
- APPROVAL OF THIS PLAN BY THE COUNTY OF LOS ANGELES DOES NOT CONSTITUTE A REPRESENTATION AS TO THE ACCURACY OF THE LOCATION OF OR THE EXISTENCE OR NON-EXISTENCE OF ANY UNDERGROUND UTILITY PIPE, OR STRUCTURE WITHIN THE LIMITS OF THIS PROJECT. THE NOTE APPLIES TO ALL PAGES.
- REFER TO SECTION 7-10.4.3 OF THE STANDARD SPECIFICATIONS, REGARDING SAFETY ORDERS.
- PRIOR TO ISSUANCE OF THE REQUIRED SEWER CONSTRUCTION PERMIT BY THE COUNTY ENGINEER, THE CONTRACTOR SHALL OBTAIN A PERMIT TO EXCAVATE FROM THE STATE OF CALIFORNIA, DIVISION OF INDUSTRIAL SAFETY.

CONSTRUCTION NOTES:

- WORK SHALL BE CONSTRUCTED ACCORDING TO THE STANDARD SPECIFICATIONS FOR PUBLIC WORKS CONSTRUCTION 1973 EDITION WITH 1974 SUPPLEMENTS AND COUNTY ENGINEER SPECIAL PROVISIONS FOR THE CONSTRUCTION OF SANITARY SEWERS DATED MARCH 1, 1974, AND SHALL BE INDICATED ONLY IN THE PRESENCE OF THE COUNTY ENGINEER.
- THE CONTRACTOR SHALL NOTIFY THE DISTRICT DIVISION BY TELEPHONE, (818) 974-7283, AT LEAST TWENTY-FOUR HOURS BEFORE STARTING ANY WORK UNDER THIS CONTRACT.
- HOUSE LATERALS TO BE CONSTRUCTED WITH INVERTS AT PROPERTY LINE & MUST SHOW CURB GRADE EXCEPT AS NOTED.
- WYF OR THE BRANCHES MAY BE USED FOR CONNECTIONS TO MAINLINE SEWERS EXCEPT AS NOTED.
- ALL STRUCTURES SHALL BE EITHER BRICK MANHOLES PER 8-23 OR PRECAST CONCRETE MANHOLES PER 8-26, EXCEPT AS NOTED.
- PROVIDE STAKES ON THE PROPERTY LINE OR PROPERTY LINES PRODUCED AT RIGHT ANGLES TO THE SEWER LINE AT THE CENTER LINE OF EACH MANHOLE.
- MANHOLE TOPS IN UNIMPROVED RIGHTS OF WAY TO BE SIX INCHES ABOVE FINISHED GRADE.
- VITRIFIED CLAY PIPE JOINTS SHALL BE TYPE "B", "P", OR "Q" PER STANDARD SPECIFICATIONS SECTION 206-2.
- IF A POWER POLE IS WITHIN THREE FEET OF THE SEWER, THE SEWER SHALL BE ENCASED, PER 8-23, CASE II, TWO FEET ON EACH SIDE FROM THE POINT OF INTERFERENCE.
- IF DURING THE COURSE OF CONSTRUCTION IT IS DETERMINED THAT THERE IS LESS THAN FOUR FEET OF COVER OVER THE TOP OF A MAIN LINE OR HOUSE LATERAL V.C.P. SEWER WHICH IS NOT INDICATED ON THE PLANS, THE PIPE SHALL BE ENCASED PER 8-23, CASE II UNLESS OTHERWISE APPROVED BY THE COUNTY ENGINEER.
- ALL JOINTS BETWEEN CAST IRON PIPE AND VITRIFIED CLAY PIPE SHALL BE MADE WITH A RUBBER SLEEVE JOINT, TYPE "C" OR "B", WITH BUSHING IF NECESSARY PER STANDARD SPECIFICATIONS, SECTION 206-2.
- SEWERS TO BE TESTED FOR LEAKAGE PER SECTION 206-1.6 OF THE STANDARD SPECIFICATIONS AND SPECIAL PROVISIONS.
- RESURFACE ALL TRENCHES WITHIN PAVED AREAS TO MEET L.A. COUNTY ROAD DEPT. OR CALIFORNIA STATE HIGHWAY REQUIREMENTS IN ACCORDANCE WITH PERMITS.
- FULL COMPLIANCE WITH SECTION 206.1.5.5 OF THE SPECIAL PROVISIONS WILL BE REQUIRED FOR BACKFILL IN STREETS. CERTIFICATION OF BACKFILL COMPACTION AND SAND EQUIVALENTS BY A QUALIFIED, REGISTERED TESTING LABORATORY SHALL BE PROVIDED BY THE PERMITTEE PRIOR TO THE ISSUANCE OF A CERTIFICATE OF PARTIAL ACCEPTANCE.



4511