

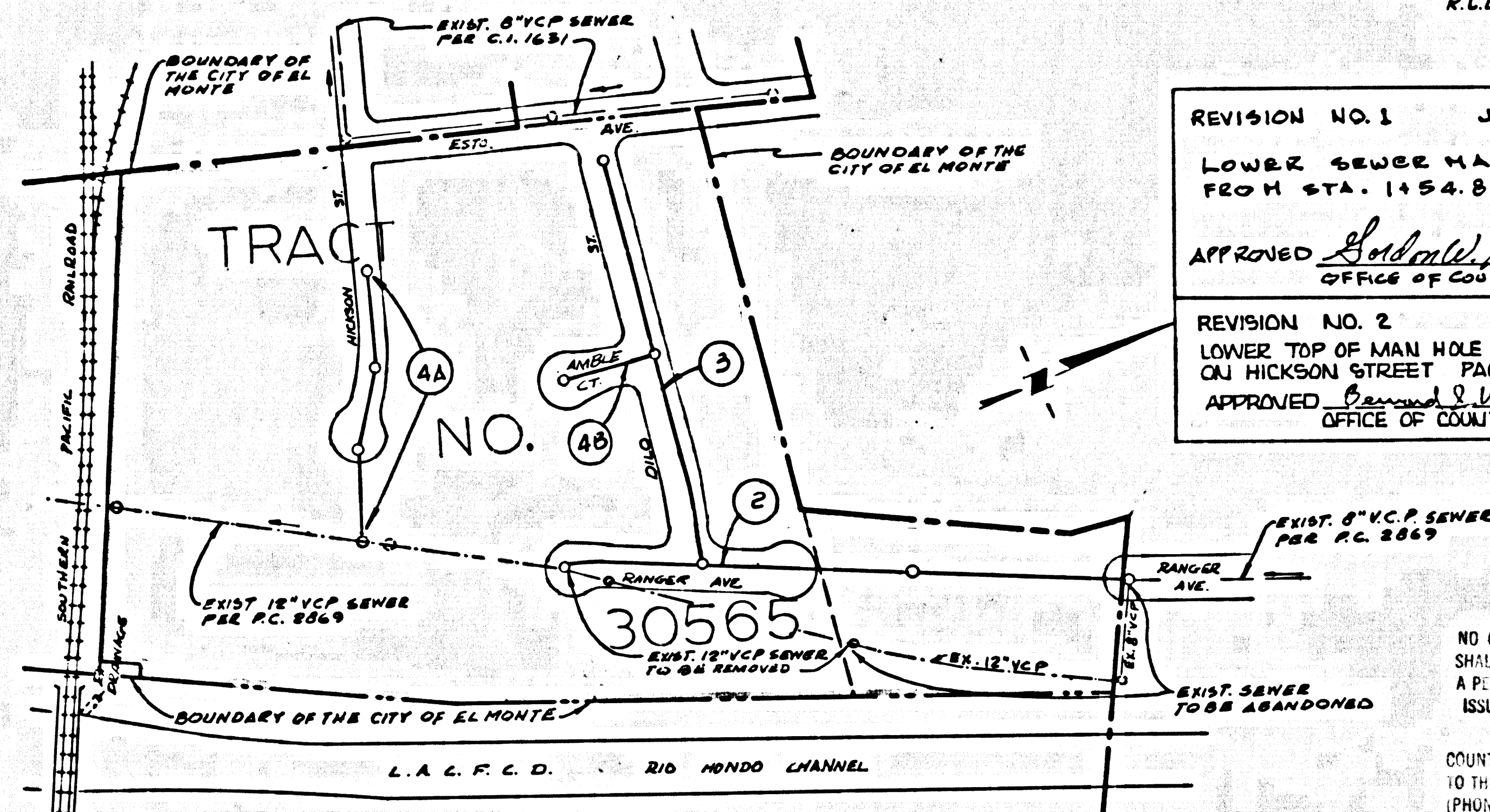
B.M. BG 3253 ELEV. 282.675
 L.A.C.S. MON IN WELL B.M.
 DN. @ INT ARDEN DR &
 RAILROAD DR.
 ROSEMEAD QUAD. 19 70

PRIVATE ENGINEERS NOTICE TO CONTRACTOR

THE EXISTENCE AND APPROXIMATE LOCATION OF UNDERGROUND UTILITIES OR STRUCTURES SHOWN ON THESE PLANS WERE DETERMINED BY A SEARCH OF AVAILABLE PUBLIC RECORDS. TO THE BEST OF OUR KNOWLEDGE THERE ARE NO UNDERGROUND UTILITIES OR STRUCTURES EXCEPT AS SHOWN ON THESE PLANS.

THE CONTRACTOR IS REQUIRED TO TAKE DUE PRECAUTIONARY MEASURES TO PROTECT THE UTILITIES OR STRUCTURES NOT OF RECORD OR NOT SHOWN ON THESE PLANS.

Robert K. Filmer 1-2-75
 R.E. No. 11349 DATE



REVISION NO. 1 JUNE 11, 1975
 LOWER SEWER MAIN LINE FROM STA. 1+54.88 TO 4+75.67
 APPROVED *Subold K. King* 6/11/75
 OFFICE OF COUNTY ENGINEER R.E. NO.

REVISION NO. 2 OCTOBER 21, 1975
 LOWER TOP OF MAN HOLE AND TOP OF CURB ELEVATIONS ON HICKSON STREET PAGE 4A
 APPROVED *Robert K. Filmer* 10/21/75
 OFFICE OF COUNTY ENGINEER R.E. NO.

NO CONNECTION FOR THE DISPOSAL OF INDUSTRIAL WASTES SHALL BE MADE TO STERS SHOWN ON THESE DRAWINGS UNTIL A PERMIT FOR INDUSTRIAL WASTE WATER DISCHARGE HAS BEEN ISSUED BY THE SANITATION DISTRICTS FOR SAID CONNECTION.

COUNTY SANITATION DISTRICTS SHALL BE NOTIFIED 24 HOURS PRIOR TO THE FOLLOWING SO THAT REQUIRED INSPECTION CAN BE MADE. (PHONE: 962-8005 - 22899)

ACCEPTANCE OF THE PROJECT.

PC 9115
 INDEX MAP
 SCALE 1"=200'

GENERAL NOTES:

- ELEVATIONS ARE IN FEET ABOVE U.S.C. & G.S. SEA LEVEL DATUM OF 1929.
- NO REVISIONS SHALL BE MADE IN THESE PLANS WITHOUT THE APPROVAL OF THE COUNTY ENGINEER.
- NO REPRESENTATIVE OF THE COUNTY ENGINEER WILL SURVEY OR LAY OUT ANY PORTION OF THE WORK.
- GRADES TO WHICH THE IMPROVEMENT IS TO BE CONSTRUCTED ARE SHOWN ON PLANS AND PROFILES. CURB POINTS FOR TOP OF CURB, CENTER LINE OF STREETS, OR CENTER LINE OF ALLEYS ARE SHOWN BY CIRCLES OR SQUARES. AT ALL POINTS BETWEEN DESIGNATED POINTS THE GRADE SHALL BE ESTABLISHED SO AS TO CONFORM TO A STRAIGHT LINE DRAWN BETWEEN SAID DESIGNATED POINTS.
- THE PRIVATE ENGINEER SHALL FURNISH THE COUNTY ENGINEER WITH GRADE SHEETS AND STATIONING FOR ALL HOUSE LATERALS AND "T" OR "Y" BRANCHES AND SHALL PROVIDE STAKES FOR THEM AT THEIR PROPER LOCATIONS WITH STATIONING PLAINLY MARKED. ALL HOUSE LATERALS SHALL BE CONSTRUCTED IN A STRAIGHT ALIGNMENT AT RIGHT ANGLES FROM THE MAIN LINE SEWER EXCEPT AS SHOWN ON THE PLANS. HOUSE LATERALS FROM CHIMNEYS SHALL NOT HAVE AN ANGLE OF LESS THAN 45° WITH THE MAIN LINE SEWER. ANY CHANGE IN ALIGNMENT SHALL BE REQUESTED IN WRITING BY THE PRIVATE ENGINEER.
- THE PRIVATE ENGINEER SHALL FURNISH THE HOUSE LATERAL DEPTH AT THE PROPERTY LINE BELOW THE TOP OF CURB ELEVATION FOR EACH HOUSE LATERAL ON THE GRADE SHEET.
- BEFORE WORK CAN BE STARTED, THE CONTRACTOR MUST OBTAIN A PERMIT TO EXCAVATE IN COUNTY STREETS FROM THE L.A. COUNTY ROAD DEPT., DISTRICT OFFICE NO. 1, AND PAY A FEE TO THE COUNTY ENGINEER, ROOM 800-800-8000, 125 N. GARDEN STREET, LOS ANGELES, CALIFORNIA. A PERMIT TO EXCAVATE IN A SIDEWALK SHALL BE OBTAINED FROM THE DISTRICT OFFICE, TO COVER THE COST OF CONSTRUCTION INSPECTION AND RECORD PLANS.
- IF WORK IS TO BE DONE IN A STATE HIGHWAY, A PERMIT MUST BE OBTAINED FROM THE STATE OF CALIFORNIA, DIVISION OF HIGHWAYS, 120 SOUTH SPRING STREET, LOS ANGELES, CALIFORNIA.
- APPROVAL OF THIS PLAN BY THE COUNTY OF LOS ANGELES DOES NOT CONSTITUTE A REPRESENTATION AS TO THE ACCURACY OF THE LOCATION OF OR THE EXISTENCE OR NON-EXISTENCE OF ANY UNDERGROUND UTILITY PIPE, OR STRUCTURE WITHIN THE LIMITS OF THIS PROJECT. THE NOTE APPLIES TO ALL PAGES.
- REFER TO SECTION 701-41 OF THE STANDARD SPECIFICATIONS, REGARDING SAFETY ORDERS.
- PERMIT TO ISSUE OF THE REVERSE SEWER CONSTRUCTION PERMIT BY THE COUNTY ENGINEER. THE CONTRACTOR SHALL OBTAIN A PERMIT TO EXCAVATE FROM THE STATE OF CALIFORNIA, DIVISION OF INDUSTRIAL AND SAFETY.

CONSTRUCTION NOTES:

- WORK SHALL BE CONSTRUCTED ACCORDING TO THE STANDARD SPECIFICATIONS FOR PUBLIC WORKS CONSTRUCTION (1974 EDITION) WITH 1974 SUPPLEMENTS AND COUNTY ENGINEER SPECIAL PROVISIONS FOR THE CONSTRUCTION OF SANITARY SEWERS DATED MARCH 1, 1974, AND SHALL BE PROSECUTED ONLY IN THE PRESENCE OF THE COUNTY ENGINEER.
- THE CONTRACTOR SHALL NOTIFY THE DESIGN DIVISION BY TELEPHONE, (213) 974-7828, AT LEAST TWENTY-FOUR HOURS BEFORE STARTING ANY WORK UNDER THIS CONTRACT.
- HOUSE LATERALS TO BE CONSTRUCTED WITH INVERTS AT PROPERTY LINE 4 FEET BELOW CURB GRADE EXCEPT AS NOTED.
- WYE OR TEE BRANCHES MAY BE USED FOR CONNECTIONS TO MAINLINE SEWERS EXCEPT AS NOTED.
- ALL STRUCTURES SHALL BE EITHER BRICK MANHOLES PER S-3 OR PRECAST CONCRETE MANHOLES PER S-3A, EXCEPT AS NOTED.
- PROVIDE STAKES ON THE PROPERTY LINE OR PROPERTY LINES PRODUCE AT RIGHT ANGLES TO THE SEWER LINE AT THE CENTER LINE OF EACH MANHOLE.
- MANHOLE TOPS IN UNIMPROVED RIGHTS OF WAY TO BE SIX INCHES ABOVE FINISHED GRADE.
- VITRIFIED CLAY PIPE JOINTS SHALL BE TYPE "B", "C", OR "D" PER STANDARD SPECIFICATIONS SECTION 300-2.
- IF A POWER POLE IS WITHIN THREE FEET OF THE SEWER, THE SEWER SHALL BE ENCASED, PER S-3, CASE II, TWO FEET ON EACH SIDE FROM THE POINT OF INTERFERENCE.
- IF DURING THE COURSE OF CONSTRUCTION IT IS DETERMINED THAT THERE IS LESS THAN FOUR FEET OF COVER OVER THE TOP OF A MAIN LINE OR HOUSE LATERAL V.C.P. SEWER WHICH IS NOT INDICATED ON THE PLANS, THE PIPE SHALL BE ENCASED PER S-3, CASE II UNLESS OTHERWISE APPROVED BY THE COUNTY ENGINEER.
- ALL JOINTS BETWEEN CAST IRON PIPE AND VITRIFIED CLAY PIPE SHALL BE MADE WITH A RUBBER SLEEVE JOINT, TYPE "C" OR "B", WITH BUSHING IF NECESSARY PER STANDARD SPECIFICATIONS, SECTION 300-2.
- SEWERS TO BE TESTED FOR LEAKAGE PER SECTION 300-1.4 OF THE STANDARD SPECIFICATIONS AND SPECIAL PROVISIONS, IN ACCORDANCE WITH PERMITS.
- RESURFACE ALL TRENCHES WITHIN PAVED AREAS TO MEET L.A. COUNTY ROAD DEPT. OR CALIFORNIA STATE HIGHWAY REQUIREMENTS IN ACCORDANCE WITH PERMITS.
- INDICATES "T" OR "Y" SHALL BE LAID HORIZONTAL AND HOUSE LATERAL SHALL BE CONSTRUCTED WITH 1/4" DIA PER FOOT TO PROPERTY AND R/W LINE.
- INDICATES HOUSE LATERAL SHALL BE CONSTRUCTED WITH 1/4" DIA PER FOOT TO PROPERTY LINE.
- FULL COMPLIANCE WITH SECTION 700-1.5 OF THE STANDARD SPECIFICATIONS SHALL BE REQUIRED FOR ALL TRENCHES. VERIFICATION OF BACKFILL COMPACTION AND SAND EQUIVALENTS BY A QUALIFIED, REGISTERED TESTING LABORATORY SHALL BE PROVIDED BY THE PERMITTEE PRIOR TO THE ISSUANCE OF A CERTIFICATE OF PARTIAL ACCEPTANCE.

TO BE CONSTRUCTED IN
 TRACT NO. 30565
 PRIVATE CONTRACT NO. 9115

W.S. 44 pg 87
 2 SHEETS, 4 PAGES

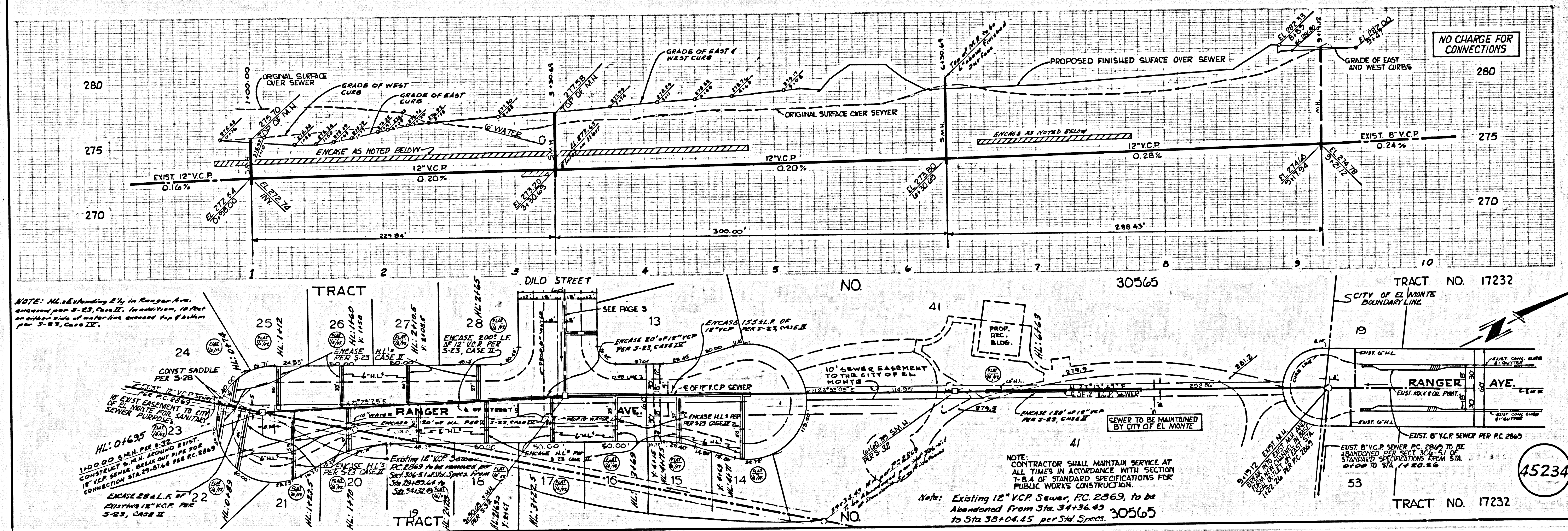
SCALE: VERT. 1"=4' HORIZ. 1"=40'
 JANUARY, 1975
 PREPARED IN THE OFFICES OF
KEMMERER ENG. CO., INC.
 6705 SO. PAINTER AVE. WHITTIER, CA. TEL: 698-0791
 BY: *Robert K. Filmer*
 REG. C.E. No. 11349

THE FOLLOWING LATEST REVISED STANDARD PLANS ON FILE IN THE OFFICE OF THE COUNTY ENGINEER SHALL APPLY IN THE CONSTRUCTION OF THIS PROJECT:

LEGEND	5.1
MINIMUM PUBLIC SAFETY REQUIREMENTS	5.2
BRICK MANHOLE	5.3
STANDARD MANHOLE STEP	5.17
BEDDING FOR SEWER PIPE	5.21
CHAMBER AND ENCASING	5.23
WYE OR TEE SUPPORT	5.26
ALLOWABLE TRENCH WIDTHS	5.28
LOCKING MANHOLE FRAME AND COVER	5.28
NON-REINFORCED PRECAST CONCRETE MANHOLE	5.28
RECTANGULAR SHALLOW MANHOLE	5.7
PRECAST CONCRETE SHALLOW MANHOLE	5.16
RECTANGULAR MANHOLE FRAME COVER	5.16

45233

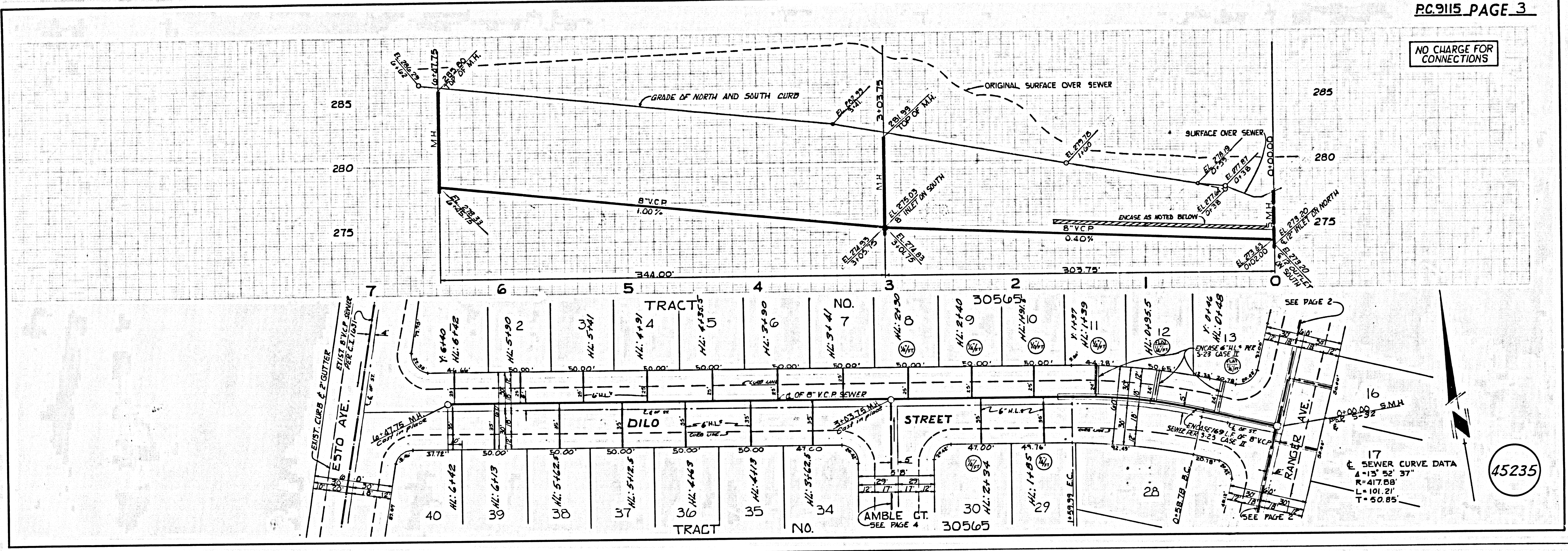
COUNTY OF LOS ANGELES, CALIFORNIA
 HARVEY T. BRANDT, COUNTY ENGINEER JOHN D. PARKHURST, CHIEF ENGINEER
 APPROVED *Robert K. Filmer* 1/2/75 APPROVED *John D. Parkhurst*
 REGIONAL ENGINEER DATE OFFICE ENGINEER
 CHECKED *Edward J. Volody* 3/1/75 APPROVED *John D. Parkhurst*
 CITY ENGINEER DATE CITY ENGINEER
 NO. C.E. NO. 10653 CITY OF EL MONTE
 R.C.E. No. 11816
 TEMPLE CITY BLDG. DIST. 5 I.N. 0789.01



NOTE: HLs Extending 2'ly in Ranger Ave. enclosed per S-23, Case II. In addition, 18' from an adjacent side of curbside enclosed top of finish per S-23, Case II.

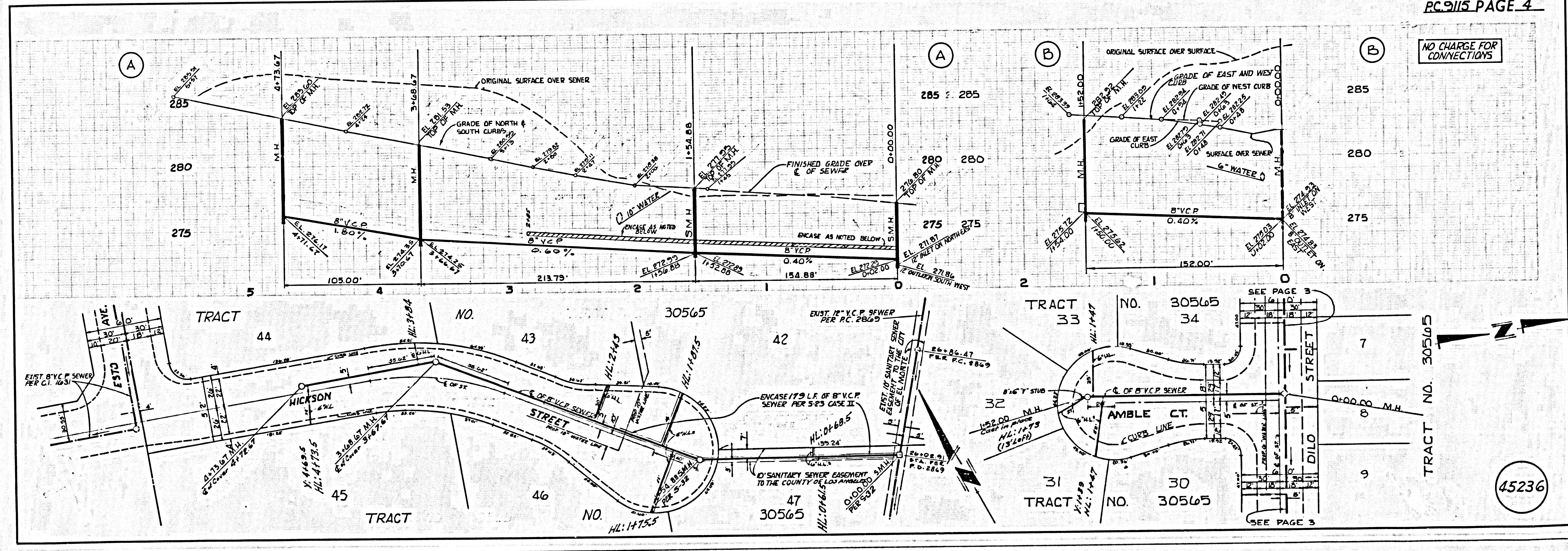
NOTE: Existing 12" V.C.P. Sewer, PC 2069, to be abandoned from Sta. 3+4+36.43 to Sta. 3+8+04.45 per 3rd Specs. 30565

45234



NO CHARGE FOR CONNECTIONS

45235



NO CHARGE FOR CONNECTIONS

45236