

B.M. BL 624 ELEV. 1266.656
 L & T. NEAR B.C.R. @ N.E. COR. SAN FRANCISCO CANTON. 22 E. SERVICE RD. E. LOS ROGUES DR. 50 FT. N.E. 10 FT. E. & INT. MKD. (B.M. E.K.8)
 MENHALL QUAD. 19 65

THE FOLLOWING COUNTY ENGINEER STANDARD PLANS APPLY TO THIS PROJECT

- LEGEND
- MINIMUM PUBLIC SAFETY REQUIREMENTS - 5-1
 - BRICK MANHOLE - 5-2
 - NON-REINFORCED PRE-CAST CONC. MANHOLE - 5-3
 - LOCKING MANHOLE FRAME & COVER - 5-4
 - STANDARD MANHOLE STEP - 5-7
 - BEDDING FOR SEWER PIPE - 5-21
 - CRACKING AND ENCASING - 5-23
 - WYE AND OR TEE SUBROCK - 5-28
 - WYE SADDLE FOR HOUSE LATERAL - 5-29
 - ALLOWABLE TRENCH WIDTHS - 5-23
 - SPECIAL HOUSE LATERALS - 5-25

SANTA CLARITA VALLEY BLDG. DIST. NO. 82

PROFILE ALIGNMENT AND GRADE OF P.C. 9116
 SANITARY SEWERS PAGE 1
 TO BE CONSTRUCTED IN
 TRACT No. 30321

PRIVATE CONTRACT NO. 9116
 INDEX 276 5 121, 276 5 125
 W.S. 62

5 SHEETS, 10 PAGES
 SCALE: VERT. 1" = 4' HORIZ. 1" = 40'

FEB. 1977
 PREPARED IN THE OFFICES OF
 V.T.N. - LOS ANGELES
 5015 VAN NUTS BLVD., VAN NUTS, CALIF.
 BY: *John Koovial*
 REG. C.E. NO. 12416

FOR LEGEND SEE PLAN NO. 5-1

NOTE:
 GRADES TO WHICH THIS IMPROVEMENT IS TO BE CONSTRUCTED ARE SHOWN ON PLANS AND PROFILES. GRADE POINTS FOR TOP OF CURBS, CENTER LINE OF STREETS, OR CENTER LINE OF ALLEYS ARE SHOWN BY CIRCLES ON PLANS. AT ALL POINTS BETWEEN DESIGNATED POINTS THE GRADE SHALL BE ESTABLISHED SO AS TO CONFORM TO A STRAIGHT LINE DRAWN BETWEEN SAID DESIGNATED POINTS. ELEVATIONS ARE IN FEET ABOVE U.S.C. & G.S. MEAN SEA LEVEL DATUM OF 1929.
 THIS DRAWING AND THE DATA HEREON ARE HEREBY MADE A PART OF THE SPECIFICATIONS FOR PUBLIC WORKS CONSTRUCTION. THE ENGINEER AND COUNTY ENGINEER SHALL BE RESPONSIBLE FOR THE CONSTRUCTION OF SANITARY SEWERS. SEE SPEC. 5177, 51, 1774 AND SHALL BE PROSECUTED ONLY IN THE PRESENCE OF THE COUNTY ENGINEER TO ELUCIDATE IN COUNTY STREETS FROM THE RECORDS AND COUNTY ENGINEER'S OFFICE. THIS DRAWING MUST BE USED AS A GUIDE TO THE COUNTY ENGINEER'S OFFICE. THE COUNTY ENGINEER'S OFFICE IS NOT RESPONSIBLE FOR THE ACCURACY OF THE DATA OR THE EXISTENCE OF ANY UNDERGROUND UTILITIES OR STRUCTURES WITHIN THE LIMITS OF THIS PROJECT. THIS NOTE APPLIES TO ALL PAGES.
 IF WORK IS TO BE DONE IN A STATE HIGHWAY, A PERMIT MUST BE OBTAINED FROM THE STATE OF CALIFORNIA, DIVISION OF HIGHWAYS, 120 SOUTH BRINK STREET, LOS ANGELES, CALIFORNIA.

COUNTY OF LOS ANGELES, CALIFORNIA
 DEPARTMENT OF COUNTY ENGINEER
 APPROVED BY: *Samuel D. Davis* REGIONAL ENGINEER (S&P)
 APPROVED BY: *Frank R. Davis* CHIEF ENGINEER
 OFFICE ENGINEER

CHECKED BY: *R.L. Koguchy*
 REG. C.E. NO. 12416

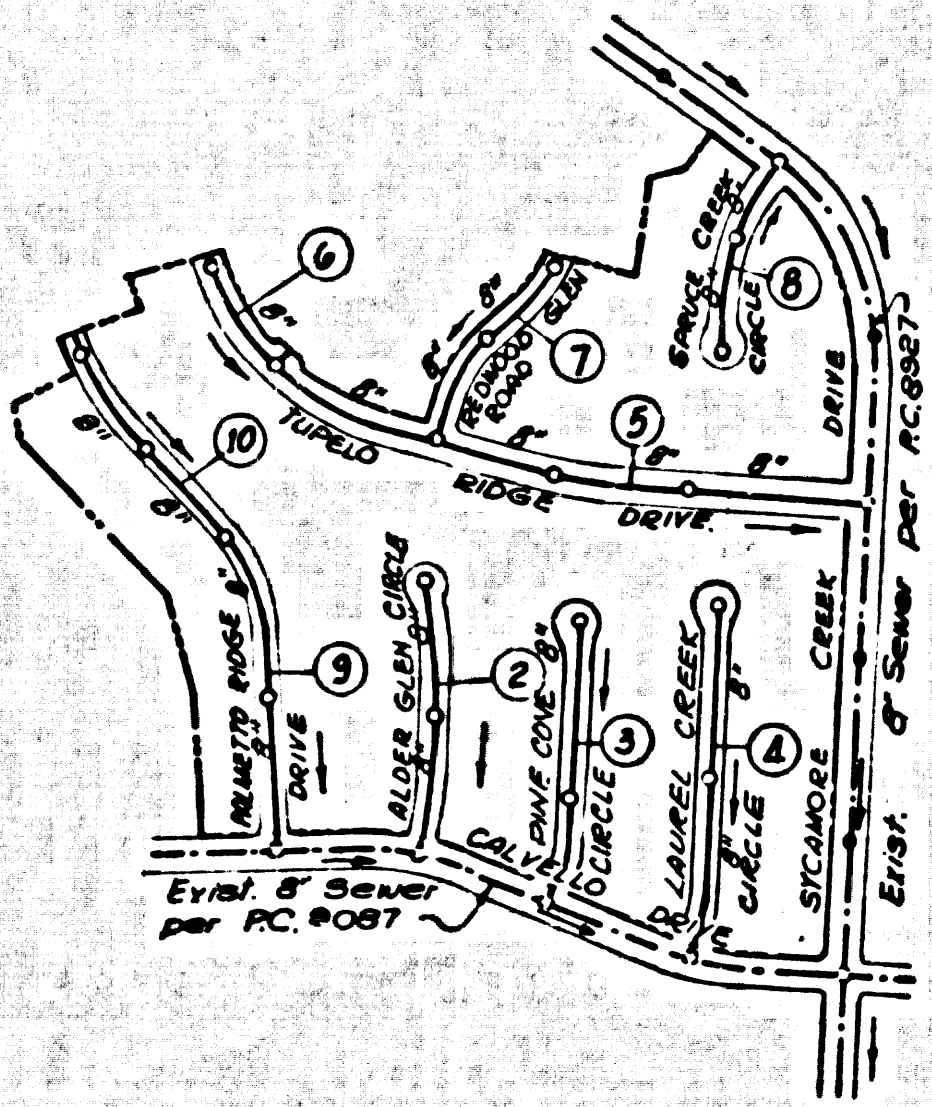
47197

J.N. 0250.02

LOTS 1 & 78 SERVED BY P.C. 9087

LOTS 103-116, 159-166 SERVED BY P.C. 8927

ISSUE NO PERMITS UNTIL P.C. 9087 AND P.C. 8927 ARE ACCEPTED



INDEX MAP
 SCALE: 1" = 500'
 P.C. 9116
 TRACT No. 30321

NO CONNECTION FOR THE DISPOSAL OF INDUSTRIAL WASTES SHALL BE MADE TO SEWERS SHOWN ON THESE DRAWINGS UNTIL A PERMIT FOR INDUSTRIAL WASTE WATER DISCHARGE HAS BEEN ISSUED BY THE SANITATION DISTRICTS FOR 3' D CONNECTION.
 BEFORE BREAKING INTO OR CONSTRUCTION ON A COUNTY SANITATION DISTRICT SEWER AND PRIOR TO FINAL ACCEPTANCE OF THE PROJECT SANITATION DISTRICT INSPECTOR SHALL BE NOTIFIED BY PHONE 962-6625, SO THAT REQUIRED INSPECTION CAN BE MADE.

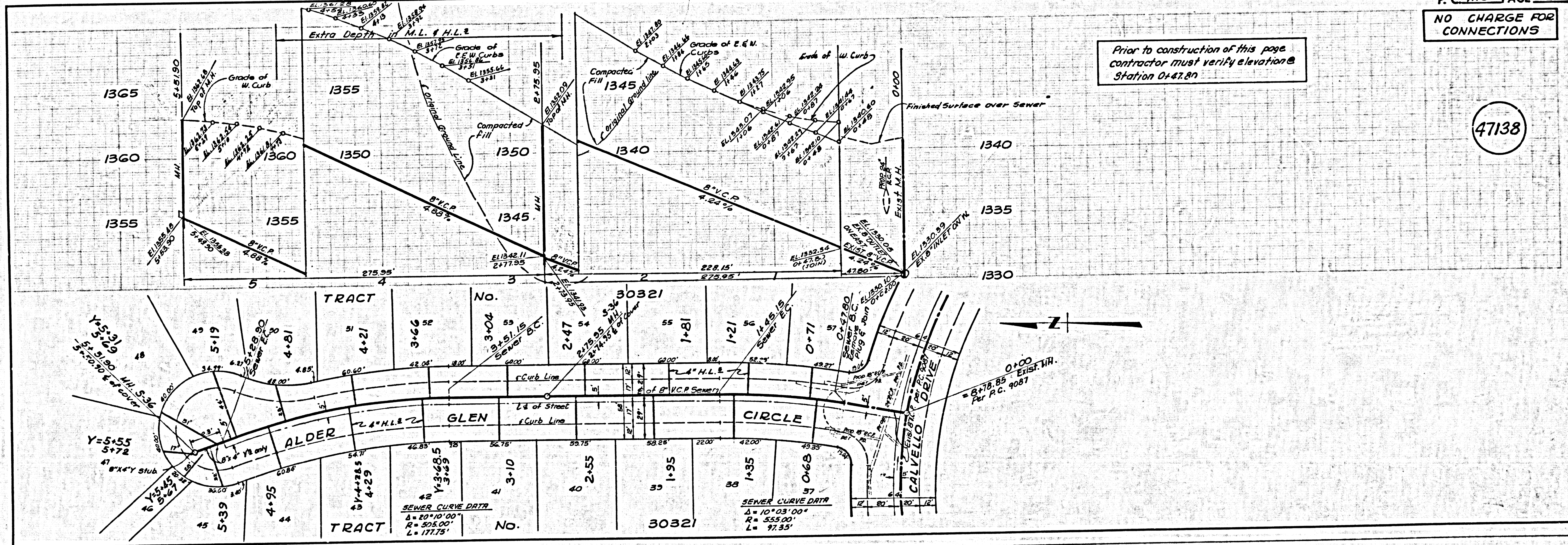
- NOTE:
- PROVIDE STAKES ON THE PROPERTY LINE OR PROPERTY LINES PRODUCED AT RIGHT ANGLES TO THE SEWER LINE AT THE CENTER LINE OF EACH MANHOLE.
 - NO REPRESENTATIVE OF THE COUNTY ENGINEER WILL SURVEY OR LAY OUT ANY PORTION OF THE WORK.
 - THE PRIVATE ENGINEER SHALL FURNISH THE COUNTY ENGINEER WITH GRADE SHEETS AND ELEVATIONS FOR ALL HOUSE LATERALS AND 75' BRANCHES AND SHALL PROVIDE STAKES FOR THEM AT THEIR PROPER LOCATIONS WITH STATIONING PLANTS MARKED. ALL HOUSE LATERALS SHALL BE CONSTRUCTED IN A STRAIGHT ALIGNMENT AT RIGHT ANGLES FROM THE MAIN LINE SEWER EXCEPT AS SHOWN ON THE PLANS. HOUSE LATERALS FROM CHIMNEYS SHALL HAVE AN ANGLE OF USE THAN 45° WITH THE MAIN LINE SEWER. ANY CHANGE IN ALIGNMENT SHALL BE SECURED BY WRITING BY THE PRIVATE ENGINEER.
 - THE PRIVATE ENGINEER SHALL FURNISH THE HOUSE LATERAL DEPTH AT THE PROPERTY LINE BELOW THE TOP OF CURB ELEVATION FOR EACH HOUSE LATERAL ON THE GRADE SHEET.
 - NO REVISIONS SHALL BE MADE IN THESE PLANS WITHOUT THE APPROVAL OF THE COUNTY ENGINEER.
 - THE CONTRACTOR SHALL NOTIFY THE DESIGN DIVISION BY TELEPHONE, 218-974-7283, AT LEAST TWENTY-FOUR HOURS BEFORE STATING ANY WORK UNDER THE CONTRACT.
 - ALL STRUCTURES SHALL BE EITHER BRICK MANHOLES PER 5-3, OR PRE-CAST CONCRETE MANHOLES PER 5-36, EXCEPT AS NOTED.
 - ALL JOINTS BETWEEN CURB AND PIPE AND BETWEEN CURB AND MANHOLE SHALL BE MADE WITH A RUBBER GLEBE JOINT IN SEWER. ALL JOINTS BETWEEN CURB AND MANHOLE SHALL BE MADE WITH A RUBBER GLEBE JOINT PER 5-21.
 - MANHOLE TOPS IN UNIMPROVED RIGHTS-OF-WAY TO BE SIX INCHES ABOVE FINISHED GRADE.
 - USE EXTRA STRENGTH PIPE. ALL PIPE IS STANDARD UNLESS NOTED OTHERWISE.
 - WRAPPED CLAY PIPE JOINTS SHALL BE TYPE "C" OR "D" PER STANDARD SPECIFICATIONS, SECTION 208-8.
 - IF A POWER POLE IS WITHIN THREE FEET OF THE SEWER, THE SEWER SHALL BE ENCASED, PER 5-23, TWO FEET ON EACH SIDE FROM THE POINT OF INTERFERENCE.
 - IF DURING THE COURSE OF CONSTRUCTION IT IS DETERMINED THAT THERE IS LESS THAN FOUR FEET OF COVER OVER THE TOP OF A MAIN LINE OR HOUSE LATERAL V.C.P. SEWER WHICH IS NOT INDICATED ON THE PLANS, THE PIPE SHALL BE ENCASED PER 5-23, UNLESS OTHERWISE APPROVED BY THE COUNTY ENGINEER.
 - HOUSE LATERALS TO BE CONSTRUCTED WITH INVERTS AT PROPERTY LINE 6 FEET BELOW CURB GRADE EXCEPT AS NOTED.
 - RESURFACE ALL TRENCHES WITHIN PAVED AREAS TO MEET L.A. COUNTY ROAD DEPT. OR CALIFORNIA STATE HIGHWAY REQUIREMENTS IN ACCORDANCE WITH PERMITS.
 - SEWER TO BE PERMITTED FOR LEAKAGE PER SEC. 208-1.4 OF STANDARD SPEC. & SPECIAL PROVISIONS.
 - TEE OR WYE CONNECTIONS NOT BE USED FOR CONNECTION TO MAINLINE SEWER EXCEPT AS NOTED.
 - REFER TO SECTION 1-10.1.1 OF THE STANDARD SPEC. REGARDING SAFETY ORDERS.
 - ALL COMPLIANCE WITH SECTION 208-1.8.5 OF THE SPECIAL PROVISIONS WILL BE REQUIRED FOR 6" V.C.P. IN STREETS. CERTIFICATION OF BACKFILL COMPACTION AND SAND EQUIVALENTS BY 15 QUADRATE BLOTTED TESTING IS REQUIRED AS APPROVED BY THE PERMITS BUREAU TO THE ISSUANCE OF A PARTIAL ACCEPTANCE.
 - PRIOR TO THE ISSUANCE OF THE REQUIRED SEWER CONSTRUCTION PERMIT BY THE COUNTY ENGINEER THE CONTRACTOR SHALL OBTAIN A PERMIT TO EXCAVATE FROM THE STATE OF CALIFORNIA, DIVISION OF INDUSTRIAL SAFETY.

COLLECT CHARGES AS INDICATED

NOTICE TO CONTRACTOR
 The existence and location of any underground utility pipes or structures shown on these plans are obtained by a search of the available records. To the best of my knowledge there are no existing utilities except as shown on these plans. The contractor is required to take due precautionary measures to protect the utility lines shown and any other lines not of record or not shown on these plans.
John Koovial
 REG. C.E. NO. 12416

NUMBERS IN CIRCLES INDICATE PAGE NUMBERS

P.C. 9116 PAGE 2
 NO CHARGE FOR CONNECTIONS

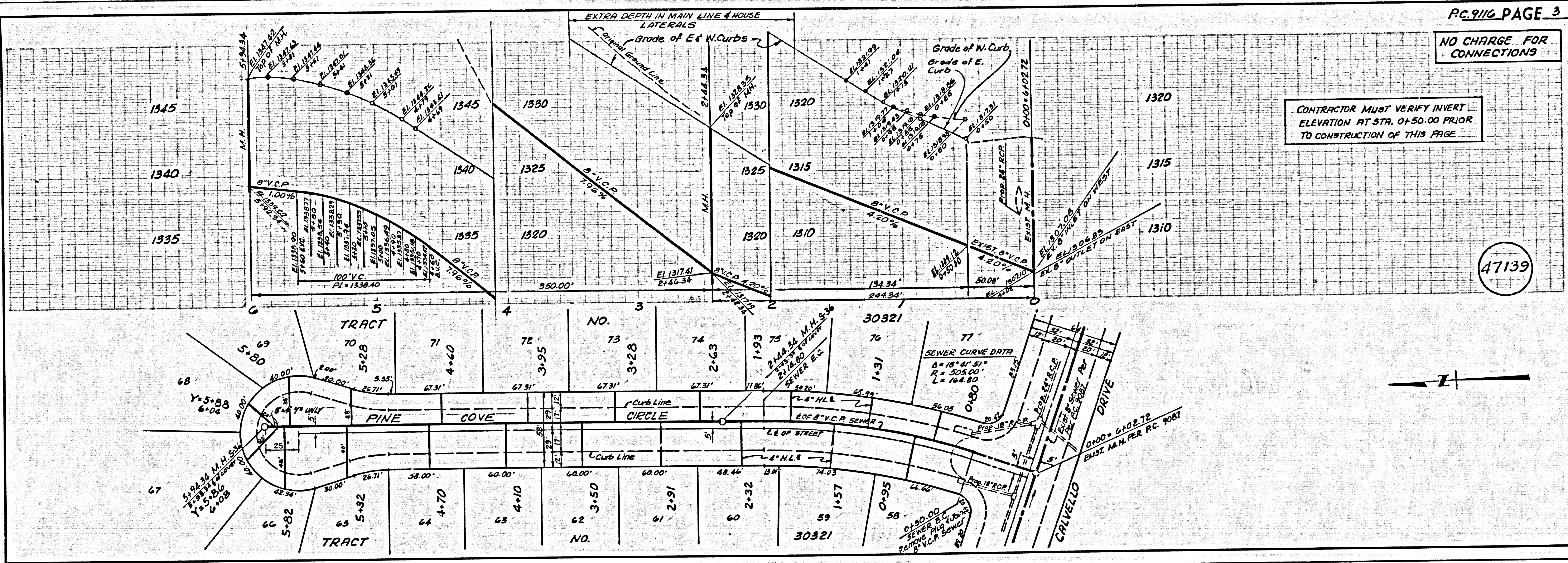


47138

NO CHARGE FOR CONNECTIONS

CONTRACTOR MUST VERIFY INVERT ELEVATION AT STA. 0+50.00 PRIOR TO CONSTRUCTION OF THIS PAGE

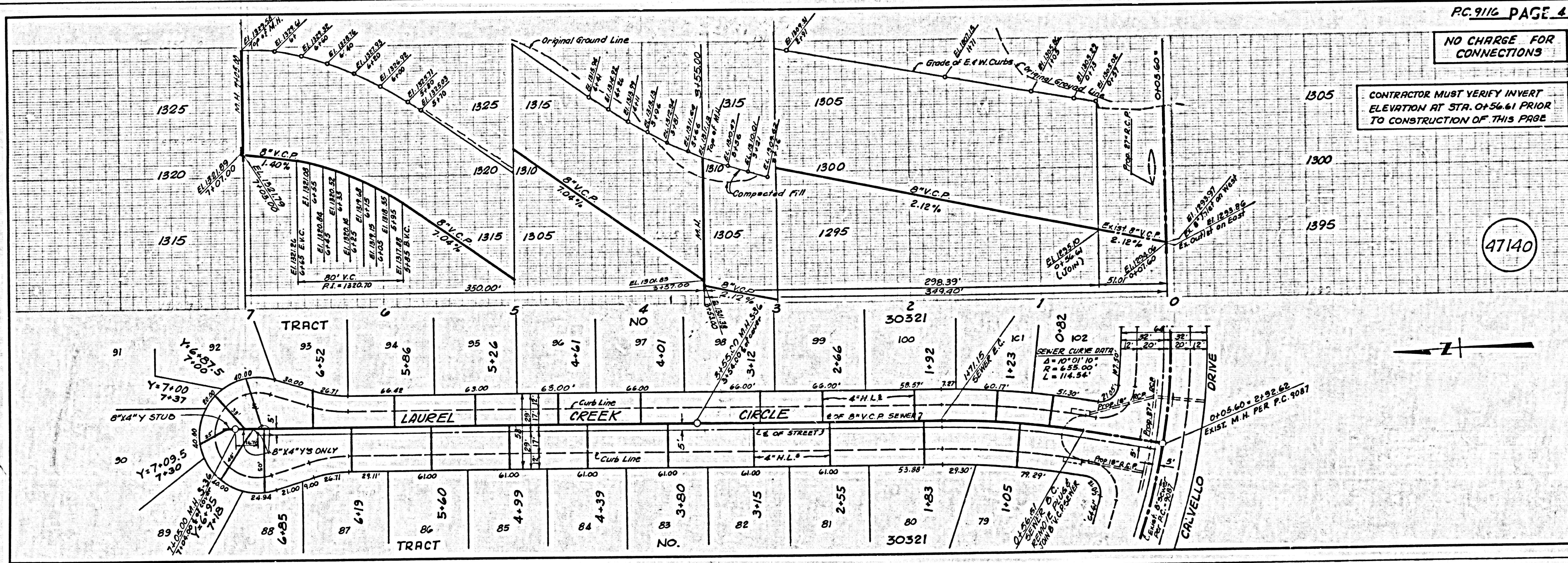
47139



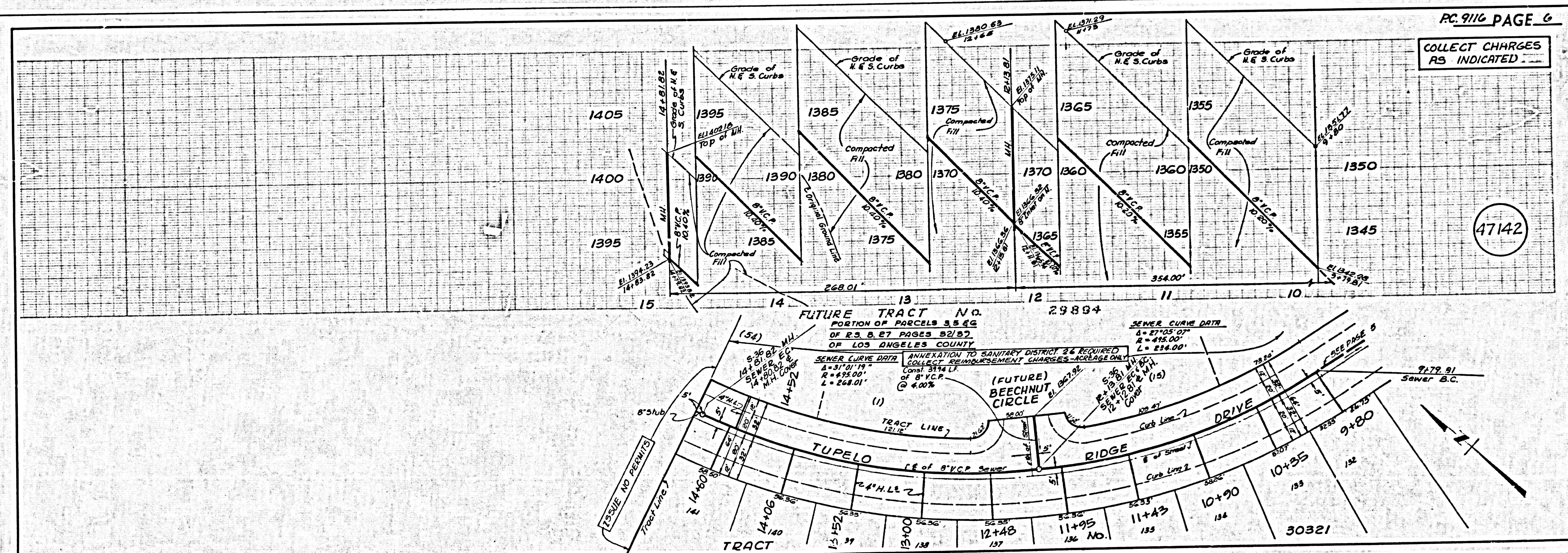
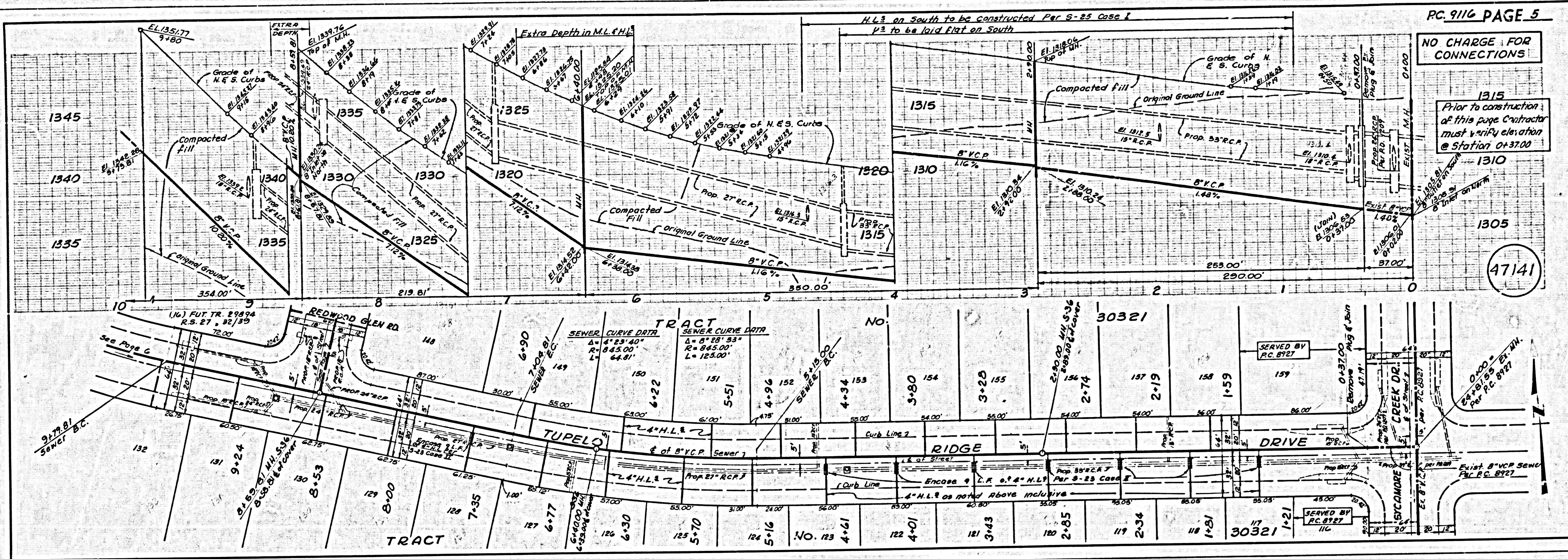
NO CHARGE FOR CONNECTIONS

CONTRACTOR MUST VERIFY INVERT ELEVATION AT STA. 0+56.61 PRIOR TO CONSTRUCTION OF THIS PAGE

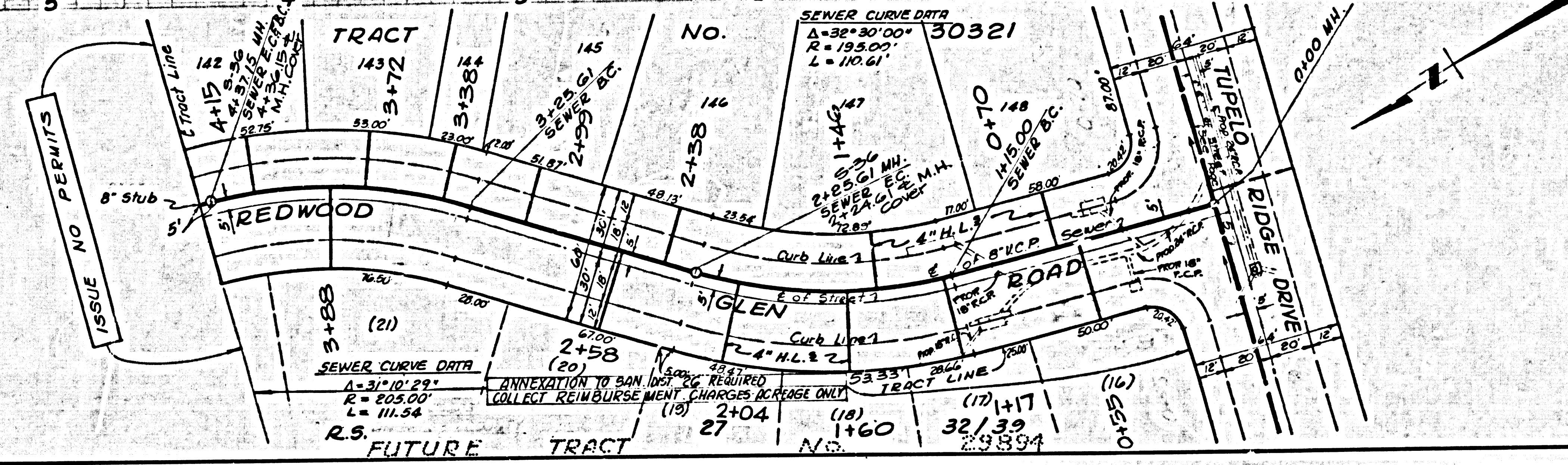
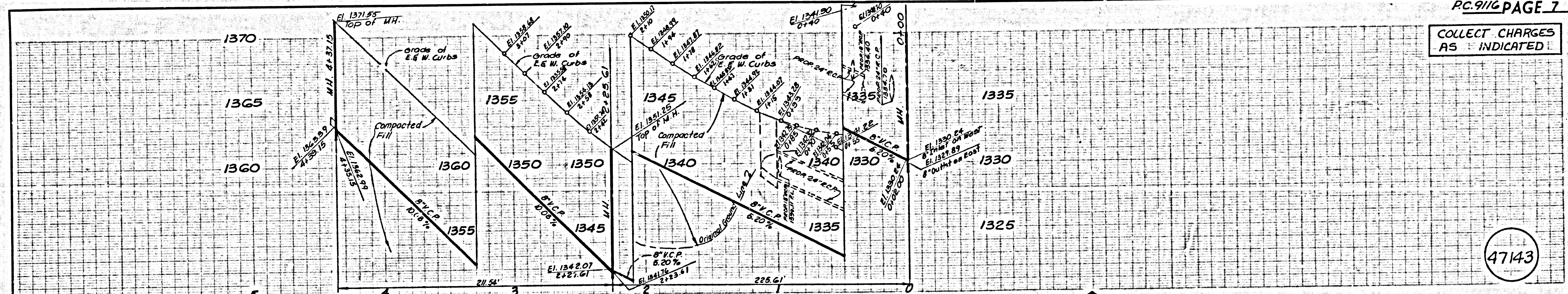
47140



5
b.c. 9116

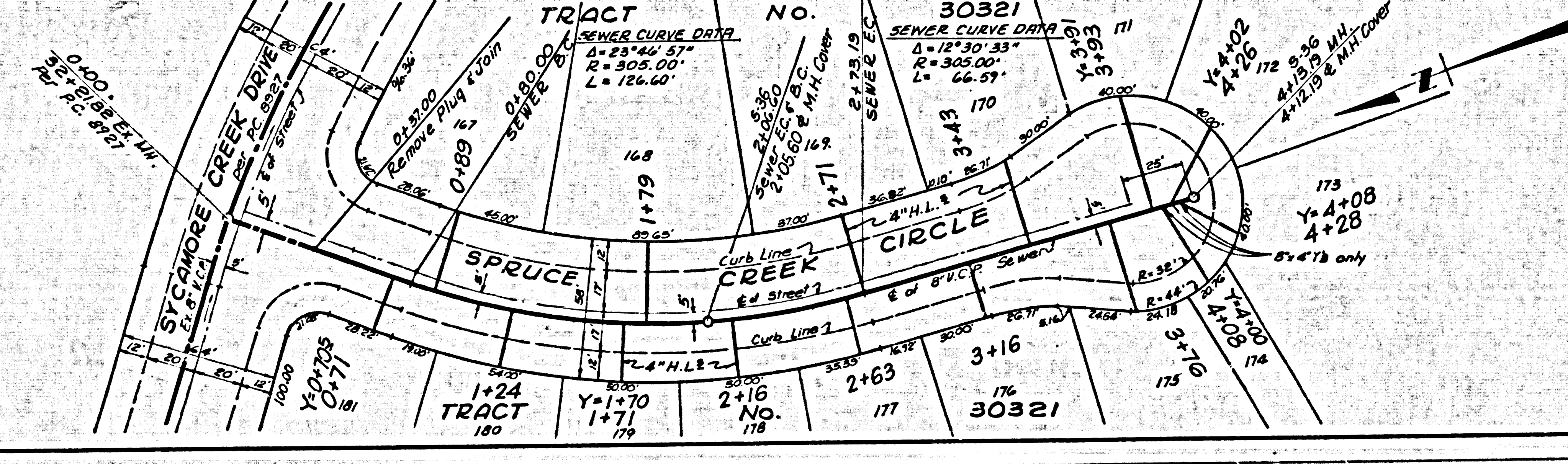
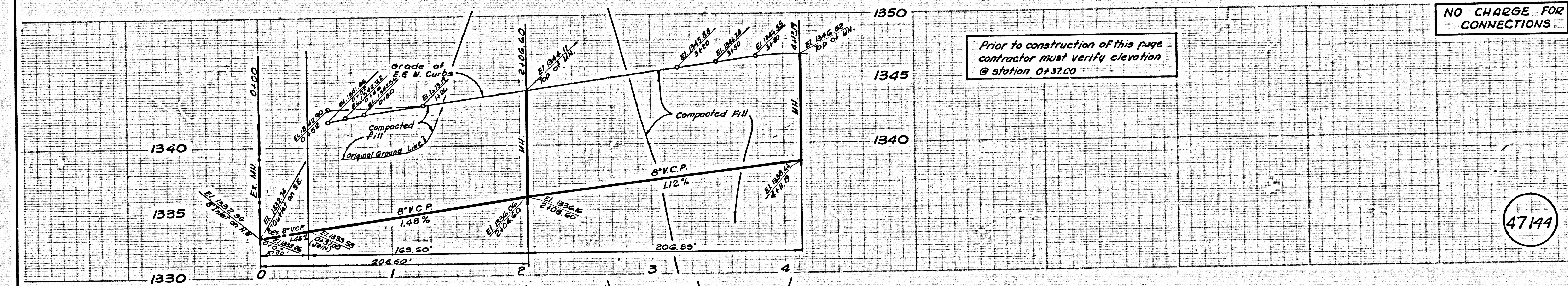


COLLECT CHARGES AS INDICATED



NO CHARGE FOR CONNECTIONS

Prior to construction of this page contractor must verify elevation @ station 0+37.00

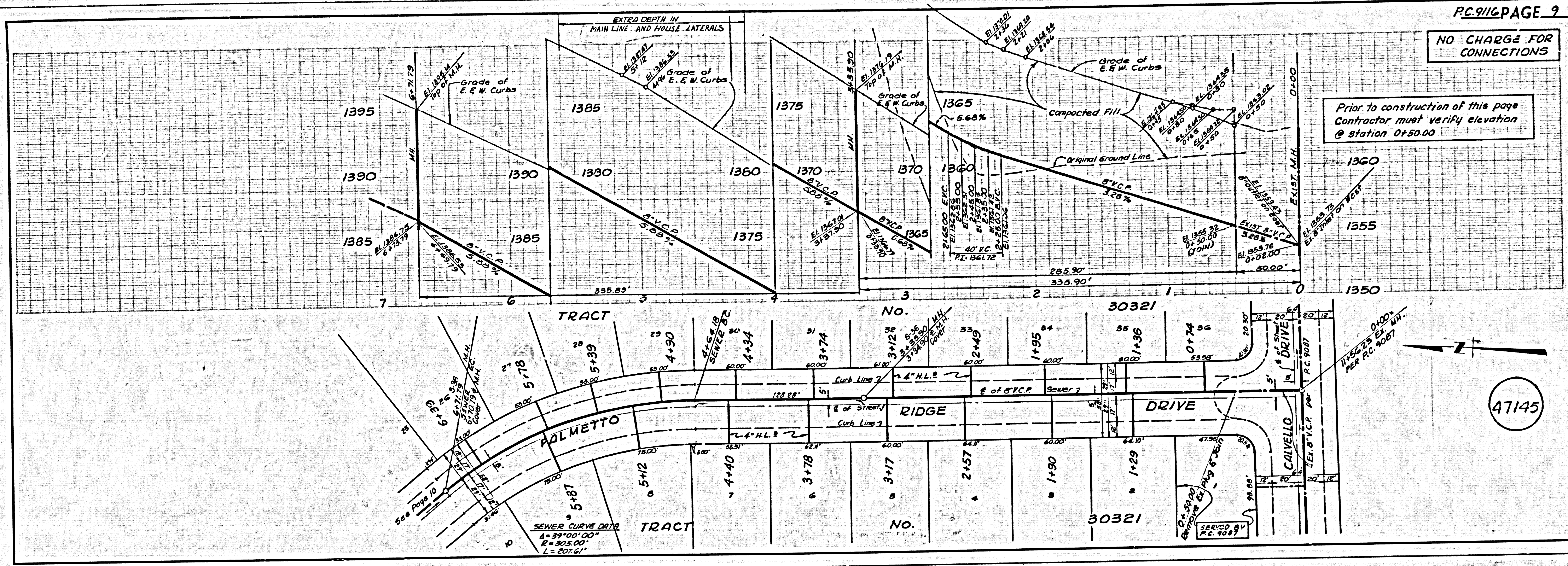


47143

47144

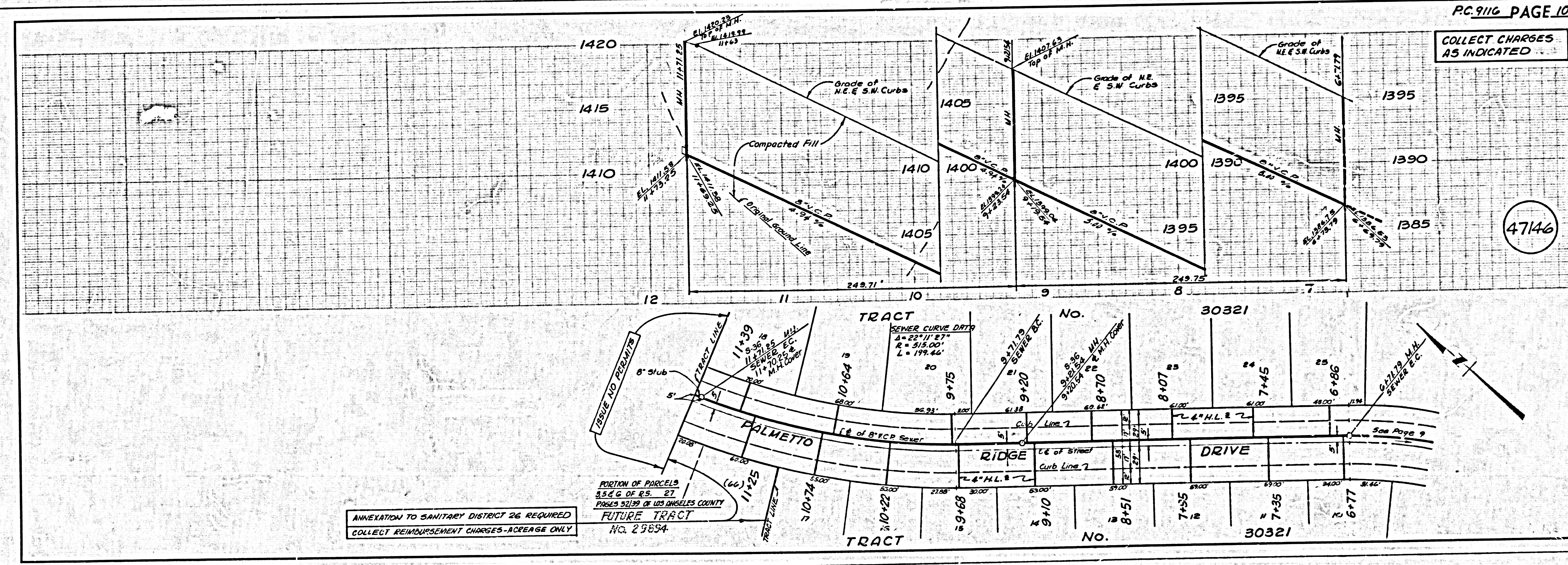
NO CHARGE FOR CONNECTIONS

Prior to construction of this page Contractor must verify elevation @ station 0+50.00



47145

COLLECT CHARGES AS INDICATED



47146

ANNEXATION TO SANITARY DISTRICT 26 REQUIRED
COLLECT REIMBURSEMENT CHARGES - AVERAGE ONLY

PORTION OF PARCELS 5.5 & 6 OF R.S. 27 PAGES 52139 OF LOS ANGELES COUNTY FUTURE TRACT No. 29854