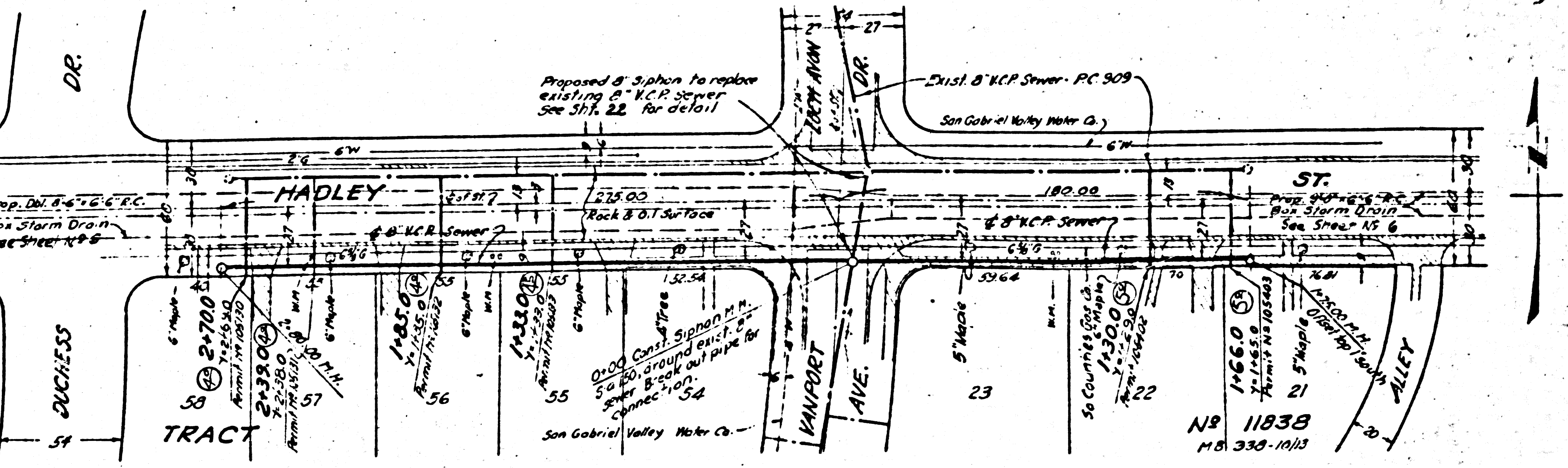
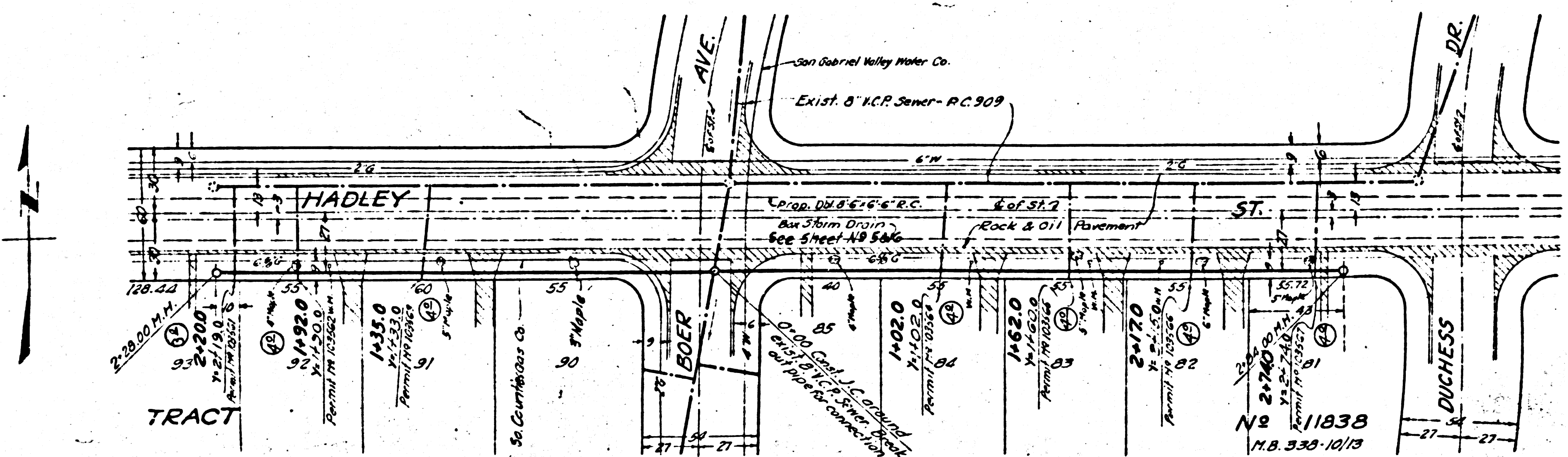
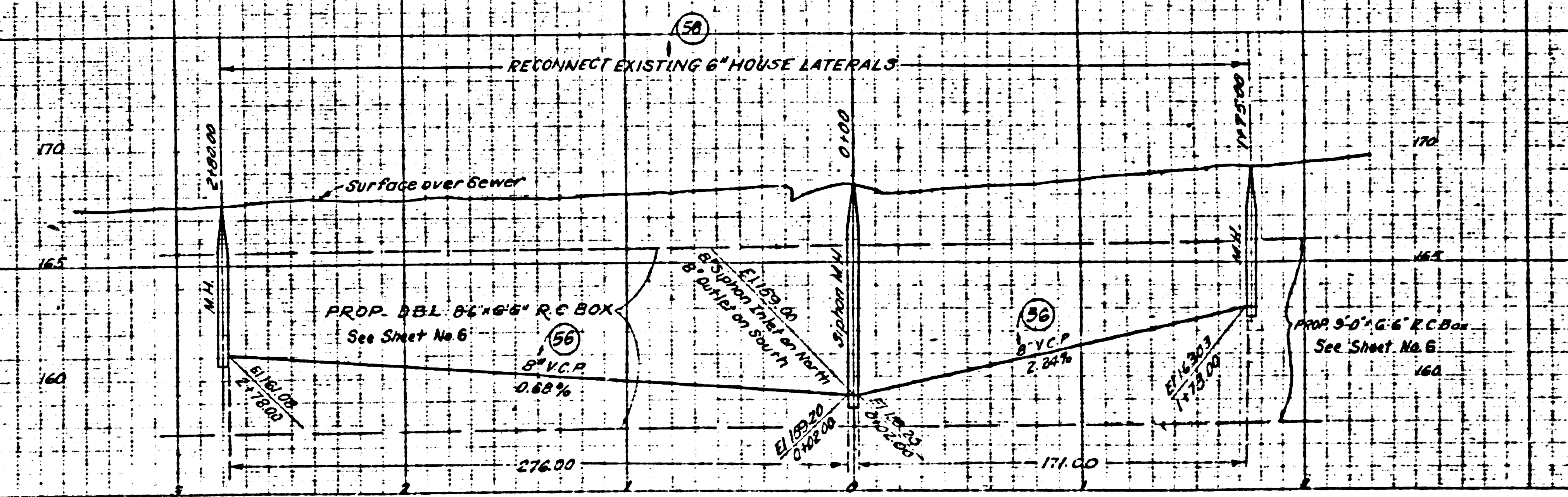
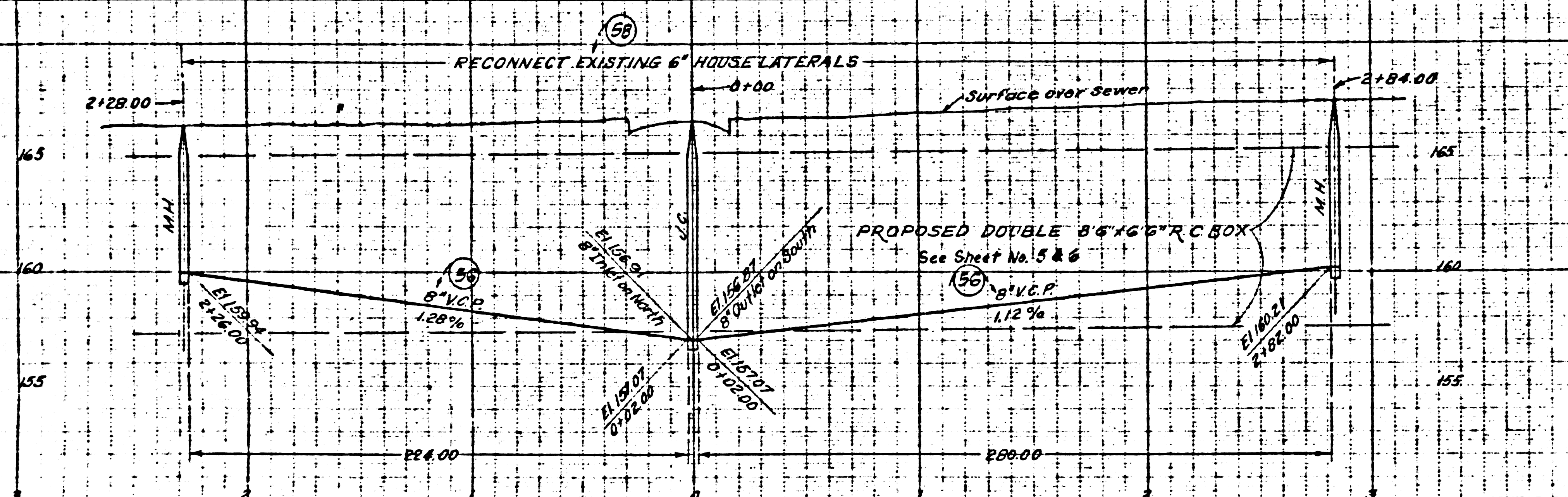


B.M. KW 44 EL. 166.885 F.B. 1905-33  
Hadley St. & Boer Ave  
S.E. corner Bt Spk in Curb  
25' S. of S end of C.R.

B.M. KW 45 EL. 167.058 F.B. 1905-33  
Hadley St. & Duchesse Dr.  
S.E. corner Bt Spk in Curb  
25' S. of S end of C.R.

B.M. KW 46 EL. 168.839 F.B. 1905-33  
Hadley St. & Vanport Ave  
S.E. corner Bt Spk in Curb  
20' S. of S end of C.R.

27732



**GENERAL NOTES**

- (To apply to Sheets 21 thru 25)
1. For Legend see Standard Plan 5a & 4.
  2. Use standard street with vitrified clay pipe, except where otherwise specified.
  3. Use cement mortar for all vitrified clay pipe joints.
  4. All structures shall be brick sewer structures as per Standard Plan 5a, 10A, except as noted.
  5. Use standard manhole frame and cover as per Standard Plan 5a, 11, except as noted.
  6. Abandoned sewers shall be sealed with brick & cement mortar.
  7. Use Formula, Sec. 54, of Standard Specifications to compute allowable leakage.
  8. Resurface trenches within the paved area of streets as noted on the Storm Drain Plans.

REFERENCE P.C. NO 9125  
SHEET 1 OF 3 SHEETS

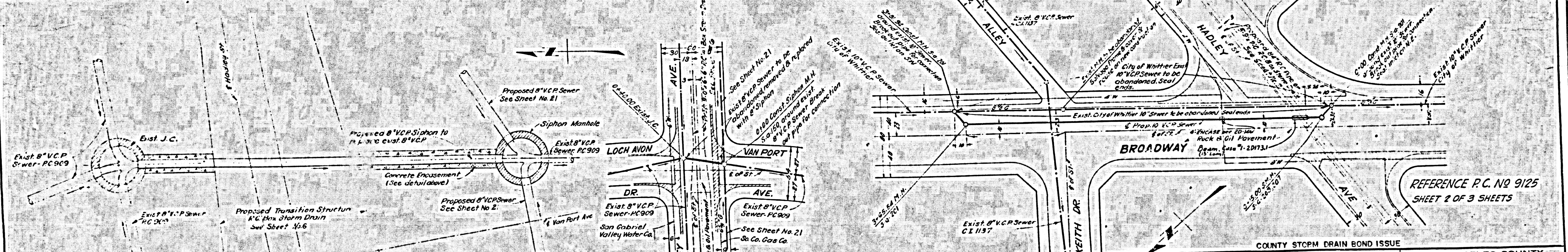
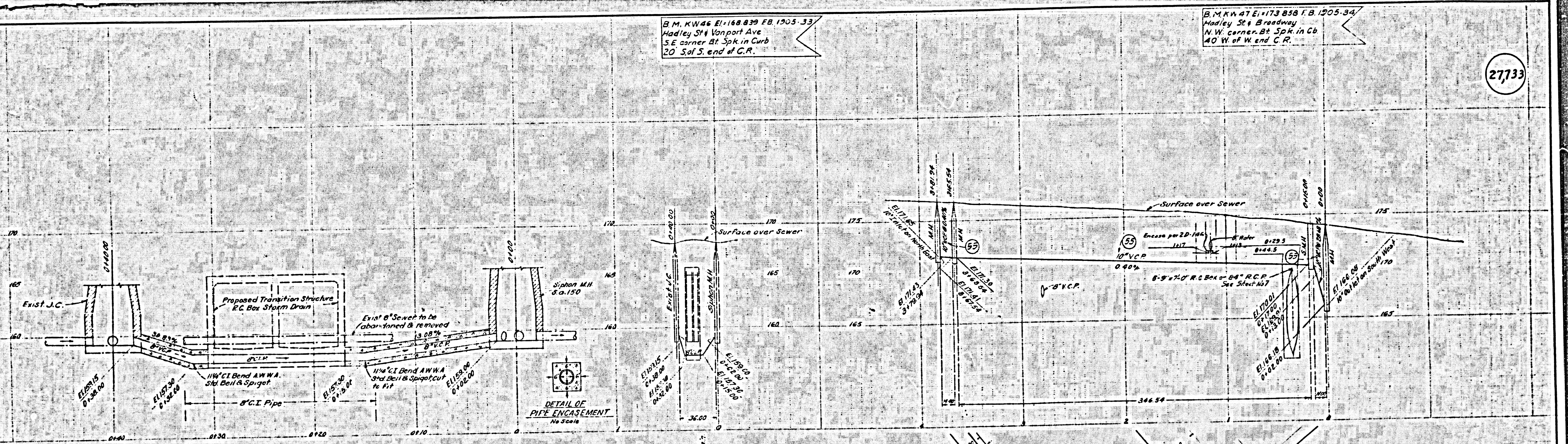
COUNTY STORM DRAIN BOND ISSUE

PREPARED BY <b>JOHN A. LAMBIE</b> COUNTY ENGINEER  RECOMMENDED BY <i>J.P. Collins</i> SANITATION ENGINEER	REVISIONS MARK DATE DESCRIPTION		LOS ANGELES COUNTY FLOOD CONTROL DISTRICT  PROJECT NO. 8 <b>GUIRADO AVENUE LINE A</b> SANITARY SEWER RECONSTRUCTION PLAN AND PROFILE
	DRAWN BY L. L. LAMMIGAN CHECKED BY L. L. LAMMIGAN DATE MARCH 1957		

B.M. KW46 El. 168.839 FB. 1905-33  
Hadley St & Vanport Ave  
S.E. corner Bl. Spk. in Curb  
20 S of S. end of C.R.

B.M. KW47 El. 179.858 FB. 1905-34  
Hadley St & Broadway  
N.W. corner Bl. Spk. in Cb  
40 W of W end C.R.

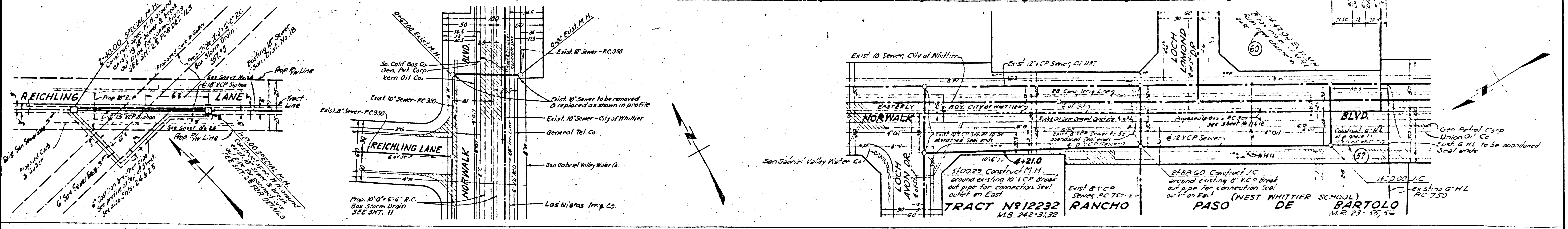
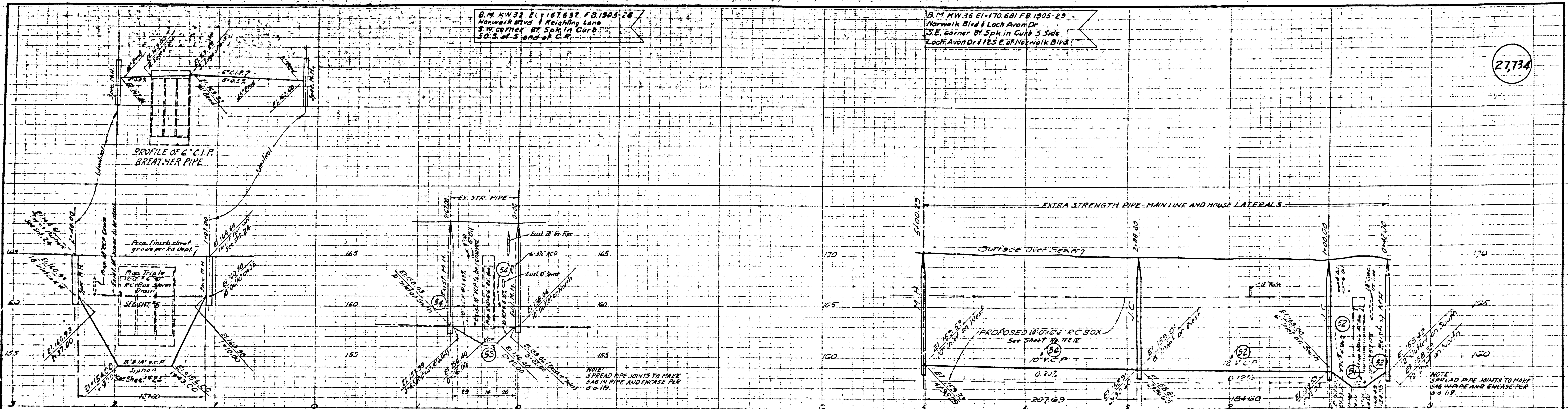
27733



**SANITARY SEWER SIPHON**  
HADLEY ST. AT LOCH AVON DR & VANPORT AVE

COUNTY STORM DRAIN BOND ISSUE

PREPARED BY <b>JOHN A. LAMBIE</b> COUNTY ENGINEER	REVISIONS		LOS ANGELES COUNTY FLOOD CONTROL DISTRICT
RECOMMENDED BY <i>A.P. Collins</i> SANITATION ENGINEER	MARK	DATE	DESCRIPTION
DRAWN BY: S.F. MALLO			
CHECKED BY: A.L. RYAN			
DESIGNED BY: S.F. MALLO			
CHECKED BY: W.H.E.D.			
APPROVED BY: <i>J. H. Lambie</i>			
PROJECT NO. 8 GUJARADO AVENUE LINE A SANITARY SEWER RECONSTRUCTION PLAN AND PROFILE	SCALE	DATE	NO. 1818-DI.22
			AS SHOWN APR. 1957 SHEET 22 OF 27



LINE A

LINE B

LINE B

REFERENCE P.C. NO 9125  
SHEET 3 OF 3 SHEETS  
COUNTY STORM DRAIN BOND ISSUE

PREPARED BY <b>JOHN A. LAMBIE</b> COUNTY ENGINEER  RECOMMENDED BY <i>A. P. Collins</i> SANITATION ENGINEER	REVISIONS MARK    DATE    DESCRIPTION		LOS ANGELES COUNTY FLOOD CONTROL DISTRICT  PROJECT NO. 8 GUIRADO AVENUE LINE A & B SANITARY SEWER RECONSTRUCTION PLAN AND PROFILE
	DRAWN BY: E. J. W.    DESIGNED BY: E. J. W. CHECKED BY: R. J. W.    SUBMITTED BY: R. J. W.	DRAWN BY: COMPTON OF L.A. CHECKED BY: R. J. W.    SUBMITTED BY: W. H. E. D.	