

B.M. A.L. 624 ELEV. 1266.650  
 L.F.T. NEAR S.C.R. @ N.E. COR. SAN FRANCISQUITO CANYON RD. E. SERVICE RD. LOS ROSQUES DR. 50 FT. N. & 18 FT. E. E. INT. MKD. (B.M. E.V. 8)  
 NEWHALL QUAD. 19.65

THE FOLLOWING COUNTY ENGINEER STANDARD PLANS APPLY TO THIS PROJECT.

LEGEND	5-1
MINIMUM PUBLIC SAFETY REQUIREMENTS	5-2
SICK MANHOLE	5-3
NON-REINFORCED PRE-CAST CONC. MANHOLE	5-3.5
LOCKING MANHOLE FRAME & COVER	5-3.5
STANDARD MANHOLE STEP	5-17
BEDDING FOR SEWER PIPE	5-21
CRADLING AND ENCASUREMENT	5-23
WYE OR TEE SUPPORT	5-26
WYE SADDLE FOR HOUSE LATERAL	5-28
ALLOWABLE TRENCH WIDTHS	5-33

# SANTA CLARITA VALLEY BLDG. DIST. NO. 82

PROFILE ALIGNMENT AND GRADE OF  
**SANITARY SEWERS** PAGE 1  
 TO BE CONSTRUCTED IN  
**TRACT NO. 29894**

**PRIVATE CONTRACT NO. 9129**  
 INDEX 276 5 121 & 276 5 125  
 W.S. 62

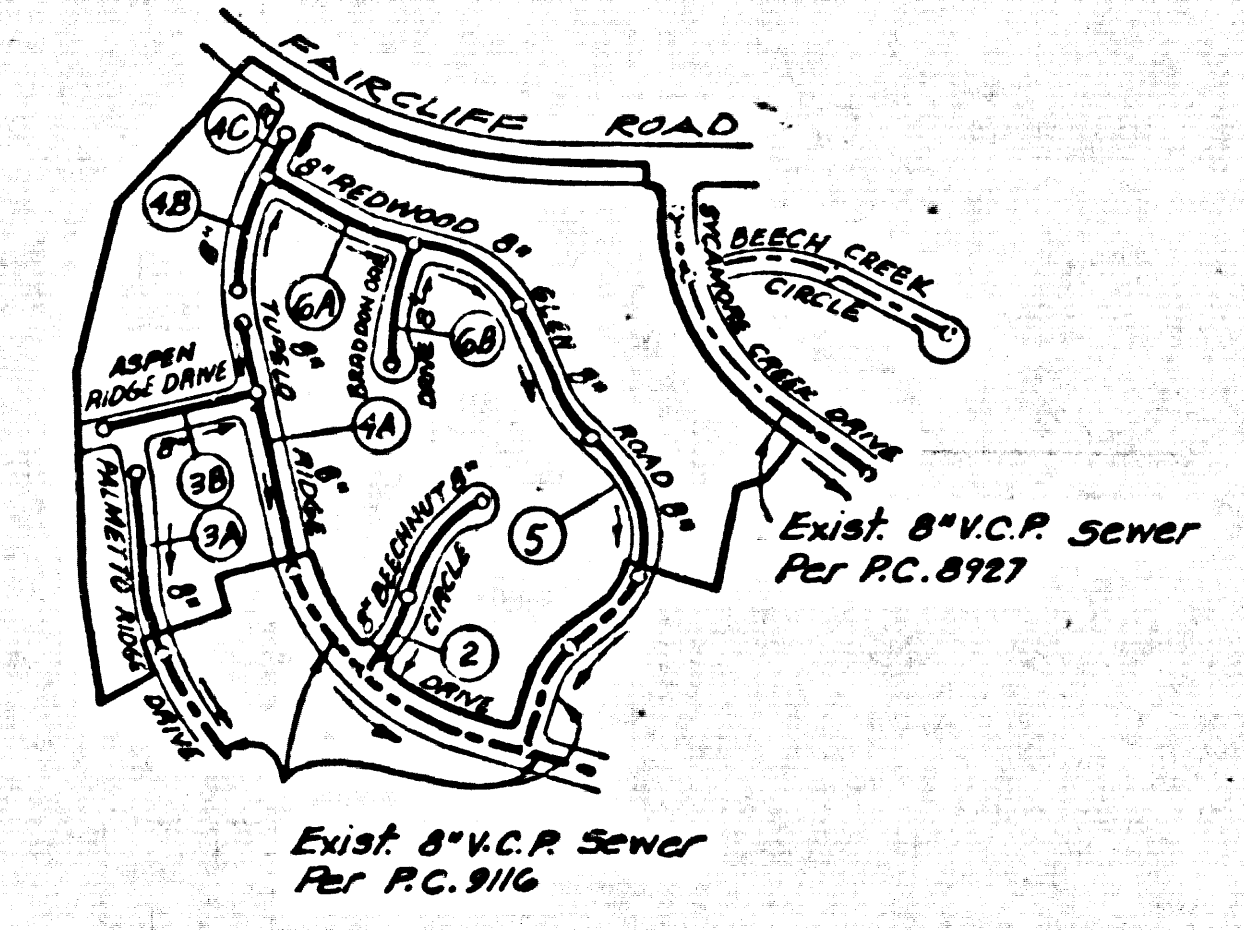
3 SHEETS, 6 PAGES  
 SCALE: VERT. 1"=4' HORIZ. 1"=40'  
 NOVEMBER, 1977

50012

PREPARED IN THE OFFICES OF  
**V.T.N. - Los Angeles**  
 3519 VAN NUYS BLVD., VAN NUYS, CALIF.  
 REG. C.E. NO. 12476

FOR LEGEND SEE PLAN NO. S-1

- NOTES
- PROVIDE STAKES ON THE PROPERTY LINE OR PROPERTY LINES PRODUCED AT RIGHT ANGLES TO THE SEWER LINE AT THE CENTER LINE OF EACH MANHOLE.
  - NO REPRESENTATIVE OF THE COUNTY ENGINEER WILL SURVEY OR LAY OUT ANY PORTION OF THE WORK.
  - THE PRIVATE ENGINEER SHALL FURNISH THE COUNTY ENGINEER WITH GRADE SHEETS AND STATIONING FOR ALL HOUSE LATERALS AND MAIN BRANCHES AND SHALL PROVIDE STAKES FOR THEM AT THEIR PROPER LOCATIONS WITH STATIONING PLAINLY MARKED. ALL HOUSE LATERALS SHALL BE CONSTRUCTED IN A STRAIGHT ALIGNMENT AT RIGHT ANGLES FROM THE MAIN LINE SEWER EXCEPT AS SHOWN ON THE PLANS. HOUSE LATERALS FROM CHIMNEYS SHALL HAVE AN ANGLE OF ONE TRIM 45° WITH THE MAIN LINE SEWER. ANY CHANGE IN ALIGNMENT SHALL BE REQUESTED BY WRITING BY THE PRIVATE ENGINEER.
  - THE PRIVATE ENGINEER SHALL FURNISH THE HOUSE LATERAL DEPTH AT THE PROPERTY LINE BELOW THE TOP OF CURB ELEVATION FOR EACH HOUSE LATERAL ON THE GRADE SHEET.
  - NO STRUCTURES SHALL BE MADE IN THESE PLANS WITHOUT THE APPROVAL OF THE COUNTY ENGINEER.
  - THE CONTRACTOR SHALL NOTIFY THE DESIGN DIVISION BY TELEPHONE, 218-274 1843, AT 10-11 TWENTY-FOUR HOURS BEFORE STARTING ANY WORK UNDER THIS CONTRACT.
  - ALL STRUCTURES SHALL BE EITHER BRICK MANHOLES PER S-3 OR PRE-CAST CONCRETE MANHOLES PER S-3.5 EXCEPT AS NOTED.
  - ALL JOINTS BETWEEN CAST IRON PIPE AND VITRIFIED CLAY PIPE SHALL BE MADE WITH A RUBBER BLEVEE JOINT, TYPE "C" OR "D", (WITH BUSHING IF NECESSARY) PER STANDARD SPEC. SEC. 808-12.
  - MANHOLE TOPS IN UNIMPROVED AREAS SHALL BE 24 INCHES ABOVE FINISHED GRADE.
  - USE EXTRA STRENGTH PIPE, ALL PIPE IS STANDARD DEPTH EXCEPT AS NOTED.
  - VITRIFIED CLAY PIPE JOINTS SHALL BE TYPE "D", 4" OR "6" PER STANDARD SPECIFICATIONS SECTION 808-2.
  - IF A POWER POLE IS WITHIN THREE FEET OF THE SEWER, THE SEWER SHALL BE ENCASED, PER S-25, TWO FEET ON EACH SIDE FROM THE POINT OF INTERFERENCE.
  - IN MARKING THE COURSE OF CONSTRUCTION IF IT IS DETERMINED THAT THERE IS LESS THAN FOUR FEET OF COVER OVER THE TOP OF A MAIN LINE OR HOUSE LATERAL V.C.P. SEWER WHICH IS NOT INDICATED ON THE PLANS, THE PIPE SHALL BE ENCASED PER S-25, UNLESS OTHERWISE APPROVED BY THE COUNTY ENGINEER.
  - HOUSE LATERALS TO BE CONSTRUCTED WITH INVERTS AT PROPERTY LINE 6 FEET BELOW CURB GRADE EXCEPT AS NOTED.
  - REINFORCE ALL TRENCHES WITHIN PAVED AREAS TO MEET L.A. COUNTY ROAD DEPT. OR CALIFORNIA STATE HIGHWAY REQUIREMENTS IN ACCORDANCE WITH TRAFFIC.
  - SEWER TO BE TESTED FOR LEAKAGE PER SEC. 808-14, OF STANDARD SPEC. (SPECIAL PROVISIONS).
  - THE 60 OR MORE BRANCHES MAY BE USED FOR COUPE TO MAINTAIN SEWER EXCEPT AS NOTED.
  - REFER TO SECTION 7-106.1 OF THE STANDARD SPEC. REGARDING SAFETY BARRIERS.
  - "FULL COMPLIANCE WITH SECTION 808-13.2 OF THE STANDARD SPECIFICATIONS WILL BE REQUIRED FOR BACKFILL IN STREETS. CERTIFICATION OF BACKFILL COMPLETION AND SAND EQUIVALENCY BY A QUALIFIED REGISTERED TESTING LABORATORY SHALL BE PROVIDED BY THE PERMITTEE PRIOR TO THE ISSUANCE OF A CERTIFICATE OF PARTIAL ACCEPTANCE."
  - PRIOR TO THE COMMENCEMENT OF THE REQUIRED SEWER CONSTRUCTION PERMIT BY THE COUNTY ENGINEER, THE CONTRACTOR SHALL OBTAIN A PERMIT TO EXCAVATE FROM THE STATE OF CALIFORNIA, DIVISION OF INDUSTRIAL SAFETY.



**INDEX MAP**  
 SCALE: 1"=400'  
 P.C. 9129  
 TRACT NO. 29894

NO CONNECTION FOR THE DISPOSAL OF INDUSTRIAL WASTES SHALL BE MADE TO SEWERS SHOWN ON THESE DRAWINGS UNLESS A PERMIT FOR INDUSTRIAL WASTE WATER DISCHARGE HAS BEEN ISSUED BY THE SANITATION DISTRICTS FOR SAID CONNECTION.

BEFORE BREAKING INTO OR CONSTRUCTION ON A COUNTY SANITATION DISTRICT SEWER AND PRIOR TO FINAL ACCEPTANCE OF THE PROJECT SANITATION DISTRICT INSPECTOR SHALL BE NOTIFIED BY PHONE 962-8000, SO THAT REQUIRED INSPECTION CAN BE MADE.

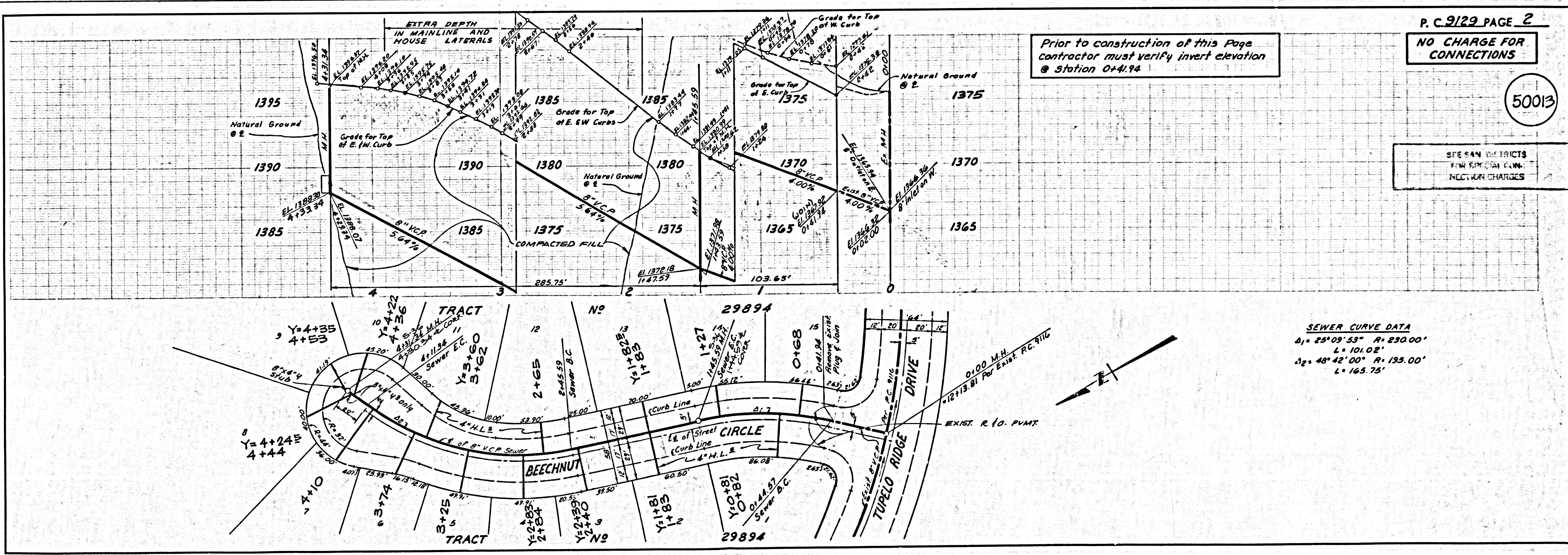
**COLLECT CHARGES AS INDICATED**

**NOTICE TO CONTRACTOR**

The assistance and location of any underground utility lines or structures shown on these plans are obtained by a search of the available records to the best of my knowledge there are no existing utilities except as shown on these plans. The contractor is required to take all precautionary measures to protect the utility lines shown and any other lines not of record or not shown on these plans.

*John Koolice*

COUNTY OF LOS ANGELES, CALIFORNIA  
 STEPHEN J. KOOLICE, COUNTY ENGINEER  
 J. D. PARKHURST, CHIEF ENGINEER  
 CO. 245-247, NOV. 1977  
 APPROVED BY *Samuel H. Wilson* (SEAL)  
 APPROVED BY *Franklin D. ...* (SEAL)  
 CHECKED BY *Andrew H. ...* 3-7-78  
 REG. C.E. NO. 22768  
 SEE SAN DISTRICTS FOR SPECIAL CONNECTION CHARGES  
 J.N. 0250.02



Prior to construction of this Page contractor must verify invert elevation @ Station 0+4.94

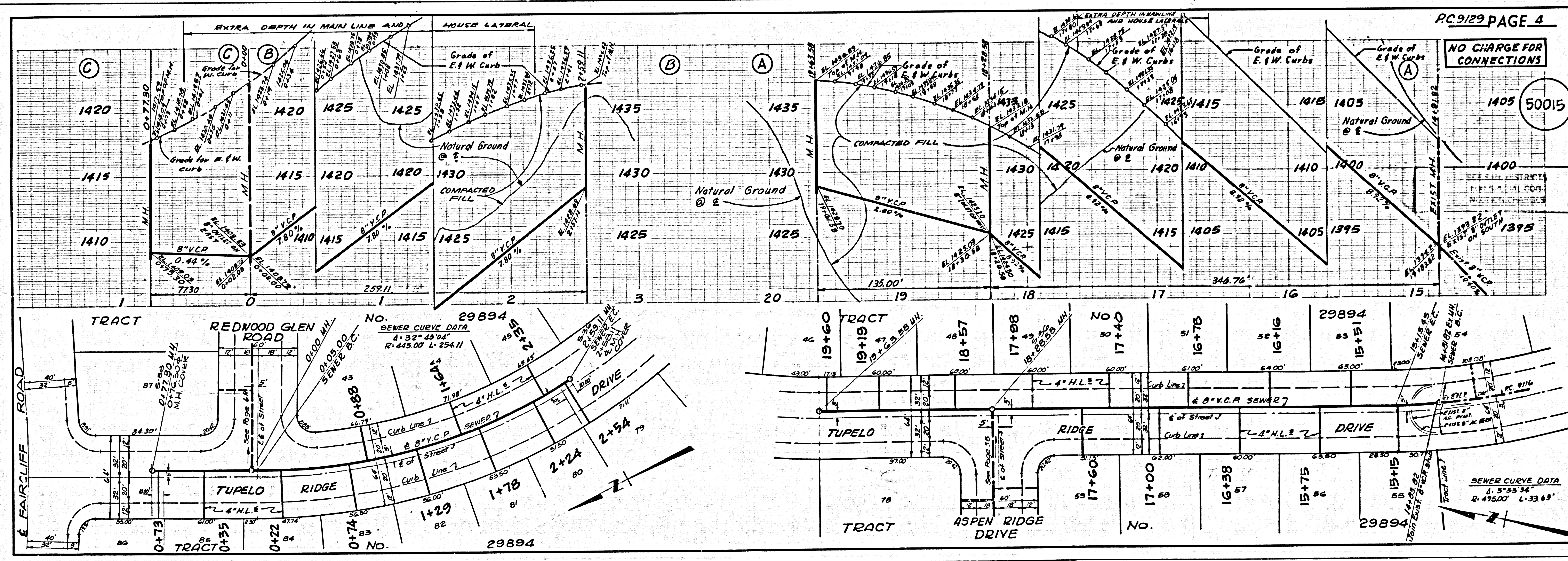
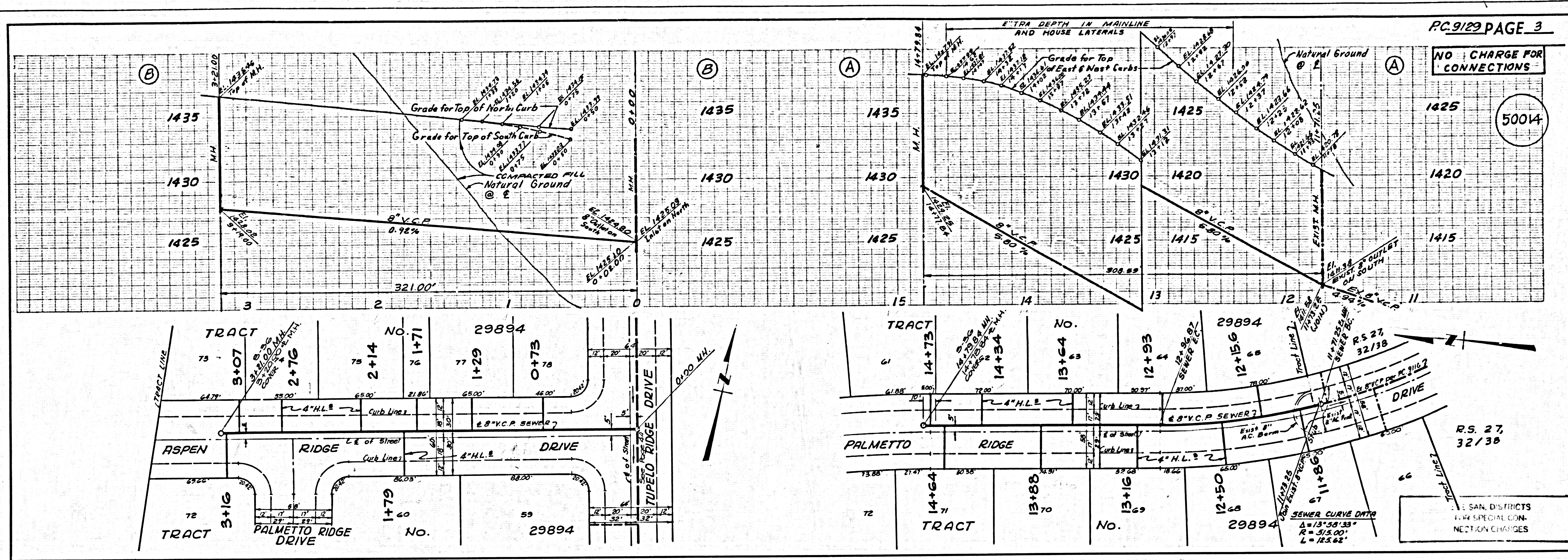
P.C. 9129 PAGE 2  
**NO CHARGE FOR CONNECTIONS**

50013

SEE SAN DISTRICTS FOR SPECIAL CONNECTION CHARGES

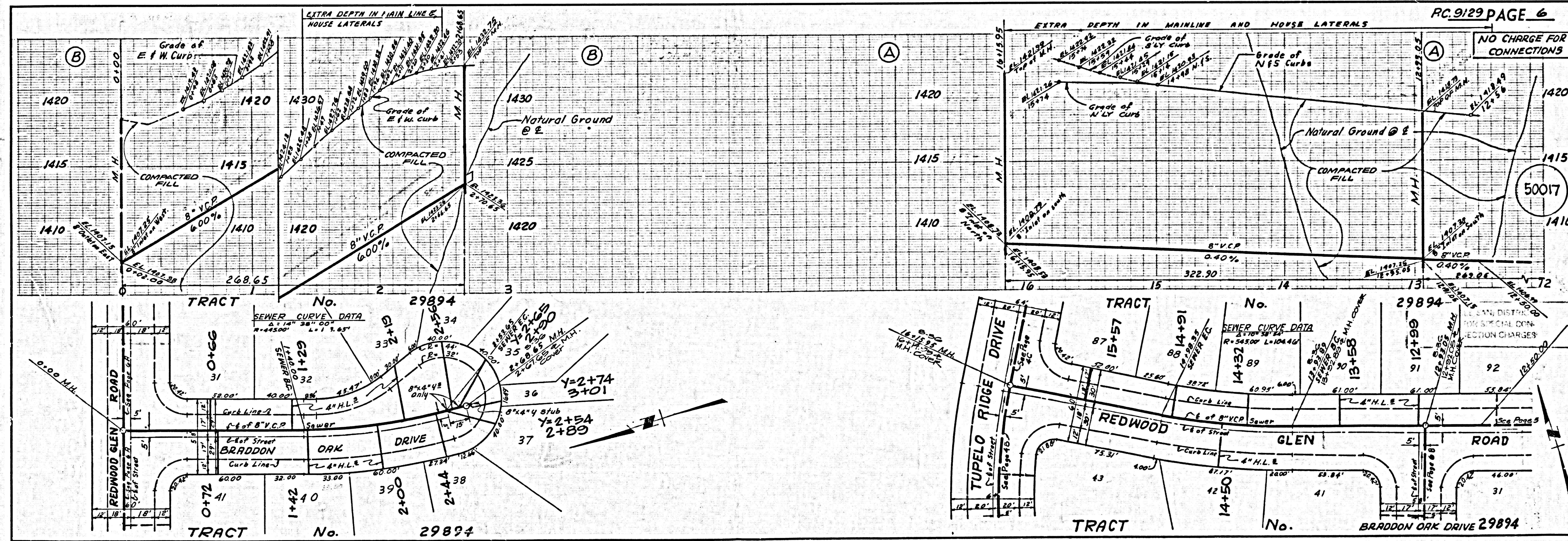
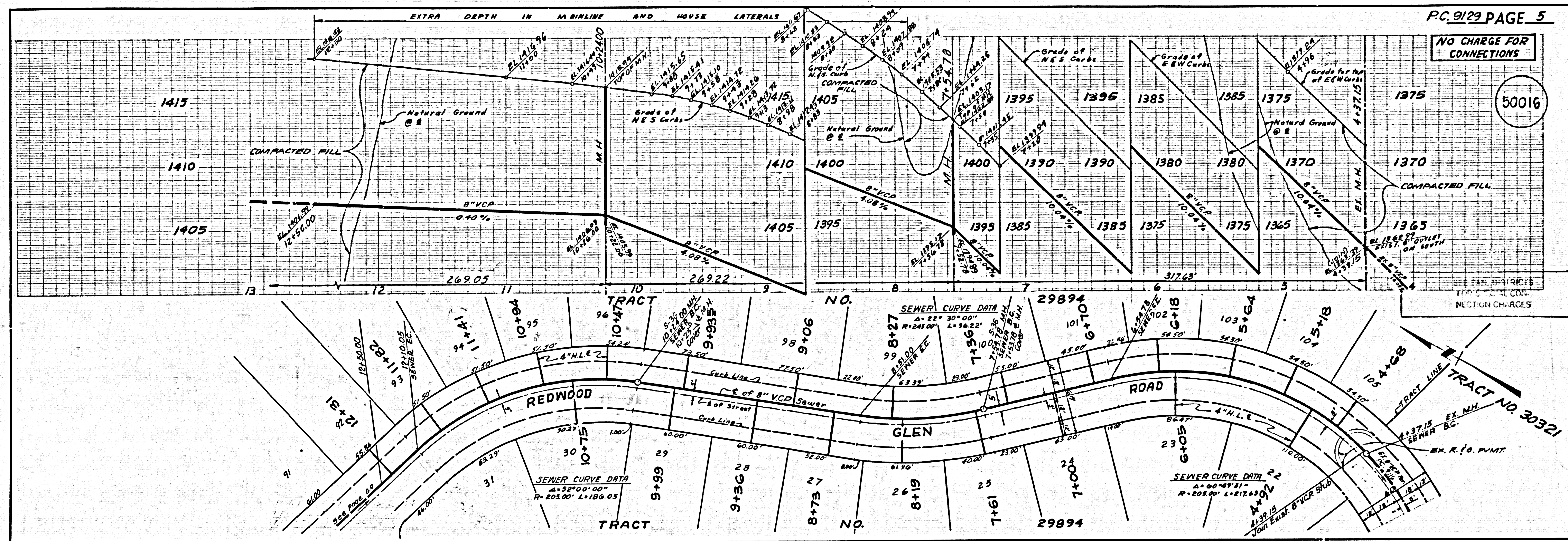
**SEWER CURVE DATA**  
 Δ1 = 25° 09' 53" R = 230.00'  
 L = 101.02'  
 Δ2 = 48° 42' 00" R = 195.00'  
 L = 165.75'





BC 2152 (S)





BC 9129