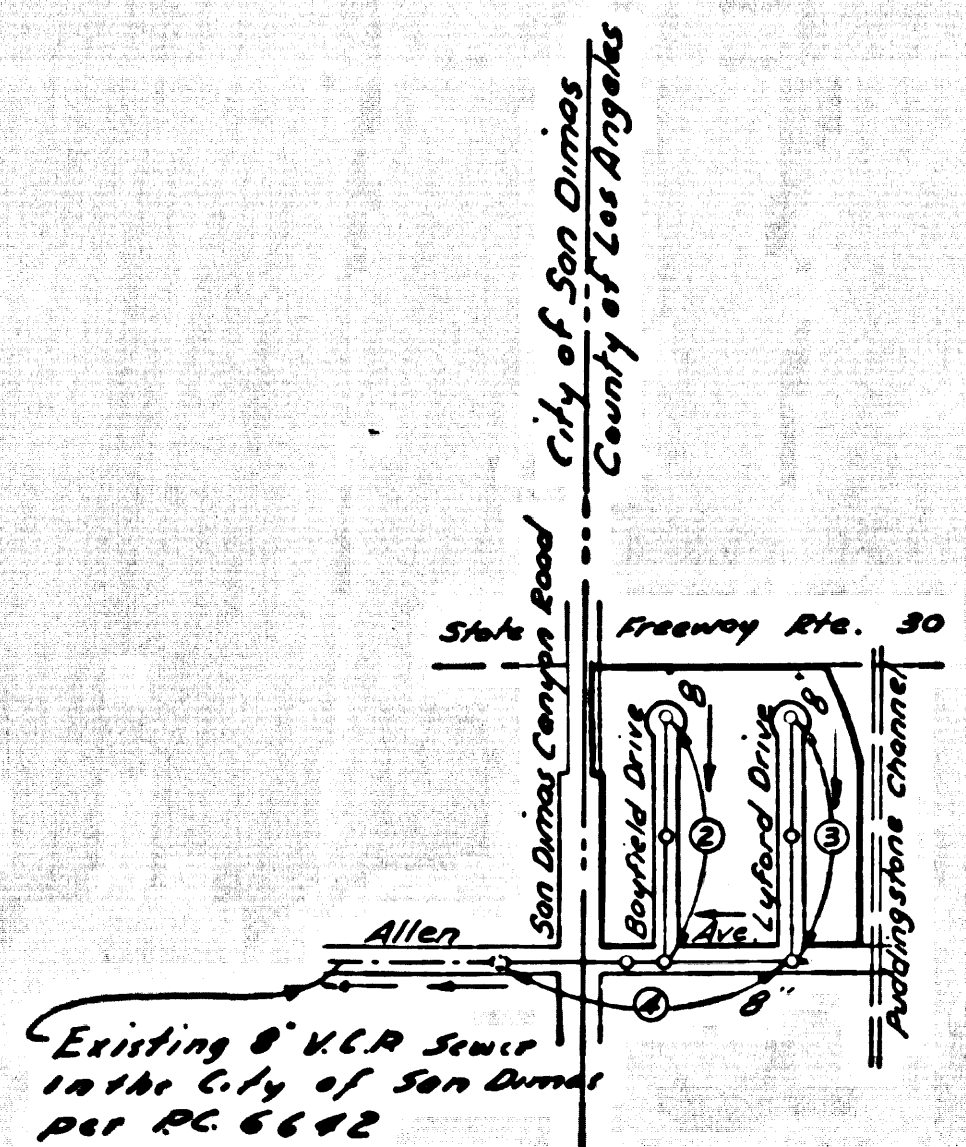


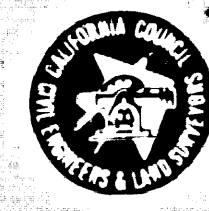
B.M. 1043 255 ELEV. 1043.255
 L.A. Co. Rd. Dept. B.M., Top corner North
 Hdq. 38' N. & Foot Hill Blvd. 4' 30' East
 of San Dimas Cor. Rd.
 San Dimas QUAD. 19 20



INDEX MAP
 Tract No. 32465
 P.C. 9132
 Scale = 1" = 600'

- Prior to issuance of the required Sewer Construction Permit by the County Engineer, the contractor shall obtain a Permit to Excavate from the State of California, Division of Industrial Safety.
- Full compliance with section 306-1.9.3 of the special provisions will be required for backfill in streets. Certification of backfill compaction and sand equivalents by a qualified, registered testing laboratory shall be provided by the permittee prior to the issuance of a certificate of partial acceptance.

Contractor agrees that he shall assume sole and complete responsibility for job site conditions during the course of construction of this Project, including safety of all persons and property; that this requirement shall apply continuously and not be limited to normal working hours; and that the Contractor shall defend, indemnify and hold the Owner and the Engineer harmless from any and all liability, real or alleged, in connection with the performance of work on this Project, excepting for liability arising from the sole negligence of the Owner or the Engineer.



COUNTY SANITATION DISTRICTS SHALL BE NOTIFIED 24 HOURS PRIOR TO THE FULFILLMENT SO THAT REQUIRED INSPECTION CAN BE MADE. (PHONE: 962-8505 - 638-1161)

CONFORMANCE OF THE PROJECT
 NO CONNECTION FOR THE DISPOSAL OF INDUSTRIAL WASTE SHALL BE MADE TO SEWERS SHOWN ON THESE PLANS UNTIL A PERMIT FOR INDUSTRIAL WASTE WATER DISCHARGE HAS BEEN ISSUED BY THE SANITATION DISTRICTS FOR SAID CONNECTION.

- BLDG. DIST. NO.
- NOTE:
- HOUSE LATERALS TO BE CONSTRUCTED WITH INVERTS AT PROPERTY LINE 4 FEET BELOW CURB GRADE EXCEPT AS NOTED.
 - PROVIDE STAKES ON THE PROPERTY LINE OR PROPERTY LINES PRODUCED AT RIGHT ANGLES TO THE SEWER LINE AT THE CENTER LINE OF EACH MANHOLE.
 - NO REPRESENTATIVE OF THE COUNTY ENGINEER WILL SURVEY OR LAY OUT ANY PORTION OF THE WORK.
 - THE PRIVATE ENGINEER SHALL FURNISH THE COUNTY ENGINEER WITH GRADE SHEETS AND STATIONING FOR ALL HOUSE LATERALS AND "T" OR "T" BRANCHES AND SHALL PROVIDE STAKES FOR THEM AT THEIR PROPER LOCATIONS WITH STATIONED PLUMMET MARKERS. ALL HOUSE LATERALS SHALL BE CONSTRUCTED IN A STRAIGHT ALIGNMENT AT RIGHT ANGLES FROM THE MAIN LINE SEWER EXCEPT AS SHOWN ON THE PLANS. HOUSE LATERALS FROM CHIMNEYS SHALL NOT HAVE AN ANGLE OF LESS THAN 45° WITH THE MAIN LINE SEWER. ANY CHANGE IN ALIGNMENT SHALL BE REQUESTED BY WRITING BY THE PRIVATE ENGINEER.
 - THE PRIVATE ENGINEER SHALL FURNISH THE HOUSE LATERAL DEPTH AS THE PROPERTY LINE BELOW THE TOP OF CURB ELEVATION FOR EACH HOUSE LATERAL ON THE GRADE SHEET.
 - NO REVISIONS SHALL BE MADE IN THESE PLANS WITHOUT THE APPROVAL OF THE COUNTY ENGINEER.
 - THE CONTRACTOR SHALL NOTIFY THE REGIONAL DIVISION BY TELEPHONE, 518-876-7283, AT LEAST TWENTY-FOUR HOURS BEFORE STARTING ANY WORK UNDER THIS CONTRACT.
 - ALL STRUCTURES SHALL BE EITHER BRICK MANHOLES PER S-5 OR PRECAST CONCRETE MANHOLES PER S-56 EXCEPT AS NOTED.
 - "T" OR "T" BRANCHES MAY BE USED FOR CONNECTIONS TO MAINLINE SEWERS EXCEPT AS NOTED.
 - MANHOLE TOPS IN UNIMPROVED RIGHTS OF WAY TO BE 3 1/2 INCHES ABOVE FINISHED GRADE.
 - USE EXTRA STRENGTH PIPE. ALL PIPE IS STANDARD DEPTH EXCEPT AS NOTED.
 - VITRIFIED CLAY PIPE JOINTS SHALL BE TYPE "B", "T", OR "O" PER STANDARD SPECIFICATIONS SECTION 308.3.
 - IF A POWER POLE IS WITHIN THREE FEET OF THE SEWER, THE SEWER SHALL BE ENCASED, PER S-23, TWO FEET ON EACH SIDE FROM THE TOP OF INTERFERENCE.
 - IF DURING THE COURSE OF CONSTRUCTION IT IS DETERMINED THAT THERE IS LESS THAN FOUR FEET OF COVER OVER THE TOP OF A MAIN LINE OR HOUSE LATERAL V.C.P. SEWER WHICH IS NOT INDICATED ON THE PLANS, THE PIPE SHALL BE ENCASED PER S-23, UNLESS OTHERWISE APPROVED BY THE COUNTY ENGINEER.
 - RESURFACE ALL TRENCHES WITHIN PAVED AREAS TO MEET L.A. COUNTY ROAD DEPT. OR CALIFORNIA STATE HIGHWAY REQUIREMENTS IN ACCORDANCE WITH PERMITS.
 - SEWER TO BE TESTED FOR LEAKAGE PER SECTION 306-2.3.7 OF THE STANDARD SPECIFICATIONS AND SPECIAL PROVISIONS.
 - REFER TO SECTION 718.41 OF THE STANDARD SPECIFICATIONS, REGARDING SAFETY ORDERS.
 - ALL JOINTS BETWEEN CAST IRON PIPE AND VITRIFIED CLAY PIPE SHALL BE MADE WITH A RUBBER SLEEVE JOINT, TYPE "C" OR "D", WITH BUSHING IF NECESSARY PER STANDARD SPECIFICATIONS, SECTION 308.3.
- THE FOLLOWING LATEST REVISED STANDARD PLANS ON FILE IN THE OFFICE OF THE COUNTY ENGINEER SHALL APPLY IN THE CONSTRUCTION OF THIS PROJECT.

MINIMUM PUBLIC SAFETY REQUIREMENTS	S-1
BRICK MANHOLE	S-5
NON-REINFORCED PRECAST CONCRETE MANHOLE	S-56
REINFORCED PRECAST CONCRETE MANHOLE	S-6
MANHOLE FRAME AND COVER	S-75
STANDARD MANHOLE STEP	S-17
BEDDING FOR SEWER PIPE	S-21
CASTING AND ENCASEMENT	S-23
WYE OR TEE SUPPORT	S-24
ALLOWABLE TRENCH WIDTHS	S-25

PROFILE, ALIGNMENT AND GRADE OF
SANITARY SEWERS P.C. 9132
 TO BE CONSTRUCTED IN PAGE 1
TRACT NO. 32465

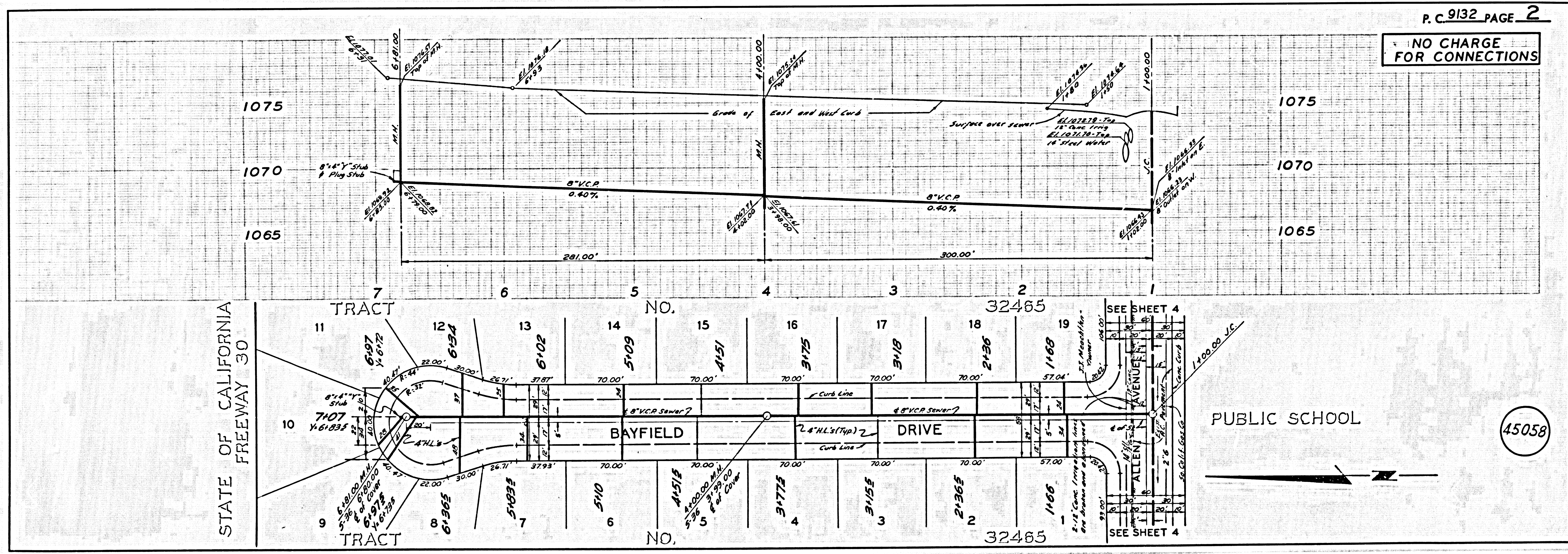
PRIVATE CONTRACT NO. 9132
 W.S. 48
 2 SHEETS; 4 PAGES (45057)
 SCALE: VERT. 1" = 4' HORIZ. 1" = 40'
 MARCH, 1975
 PREPARED IN THE OFFICES OF
EVANS-JOHNSON & ASSOCIATES
 843 WEST GLENTANA ST., COVINA, CALIF. 91722 332-9714
 By: *Thomas E. Johnson*
 REG. C. E. NO. 2668

NOTE:
 GRADES TO WHICH THIS IMPROVEMENT IS TO BE CONSTRUCTED ARE SHOWN ON PLANS AND PROFILES. GRADE POINTS FOR TOP OF CURBS, CENTER LINE OF STREETS, OR CENTER LINE OF ALLEYS ARE SHOWN BY CIRCLES ON PROFILES. AT ALL POINTS BETWEEN DESIGNATED POINTS THE GRADE SHALL BE ESTABLISHED SO AS TO CONFORM TO A STRAIGHT LINE DRAWN BETWEEN SAID DESIGNATED POINTS. ELEVATIONS ARE IN FEET ABOVE U.S.C. & G.S. SEA LEVEL DATUM OF 1929.
 WORK SHALL BE CONSTRUCTED ACCORDING TO THE STANDARD SPECIFICATIONS FOR PUBLIC WORKS CONSTRUCTION AND SPECIAL PROVISIONS FOR THE CONSTRUCTION OF SANITARY SEWERS DATED APRIL 1974 AS REVISED, AND SHALL BE PROSECUTED ONLY IN THE PRESENCE OF THE COUNTY ENGINEER.
 BEFORE WORK CAN BE STARTED, THE CONTRACTOR MUST OBTAIN A PERMIT TO EXCAVATE IN COUNTY STREETS FROM THE L. A. COUNTY ROAD DEPT., DISTRICT OFFICE NO. 1111, AND PAY A FEE TO THE COUNTY ENGINEER, 300 S. SANITARY AVE., SAN DIMAS, CALIF. 91773. REGIONAL OFFICE, SUPERINTENDENT TO COVER THE COST OF CONSTRUCTION INSPECTION AND RECORD PLANS.
 APPROVAL OF THIS PLAN BY THE COUNTY OF LOS ANGELES DOES NOT CONSTITUTE A REPRESENTATION AS TO THE ACCURACY OF THE LOCATION OR OF THE EXISTENCE OR NON-EXISTENCE OF ANY UNDERGROUND UTILITY PIPE, OR STRUCTURE WITHIN THE LIMITS OF THIS PROJECT. THIS NOTE APPLIES TO ALL PAGES.
 FOR WORK TO BE DONE IN CITY OF SAN DIMAS, A PERMIT MUST BE OBTAINED FROM CITY ENGINEER, 110 SOUTH MAIN ST., SAN DIMAS, CALIF. 91773.

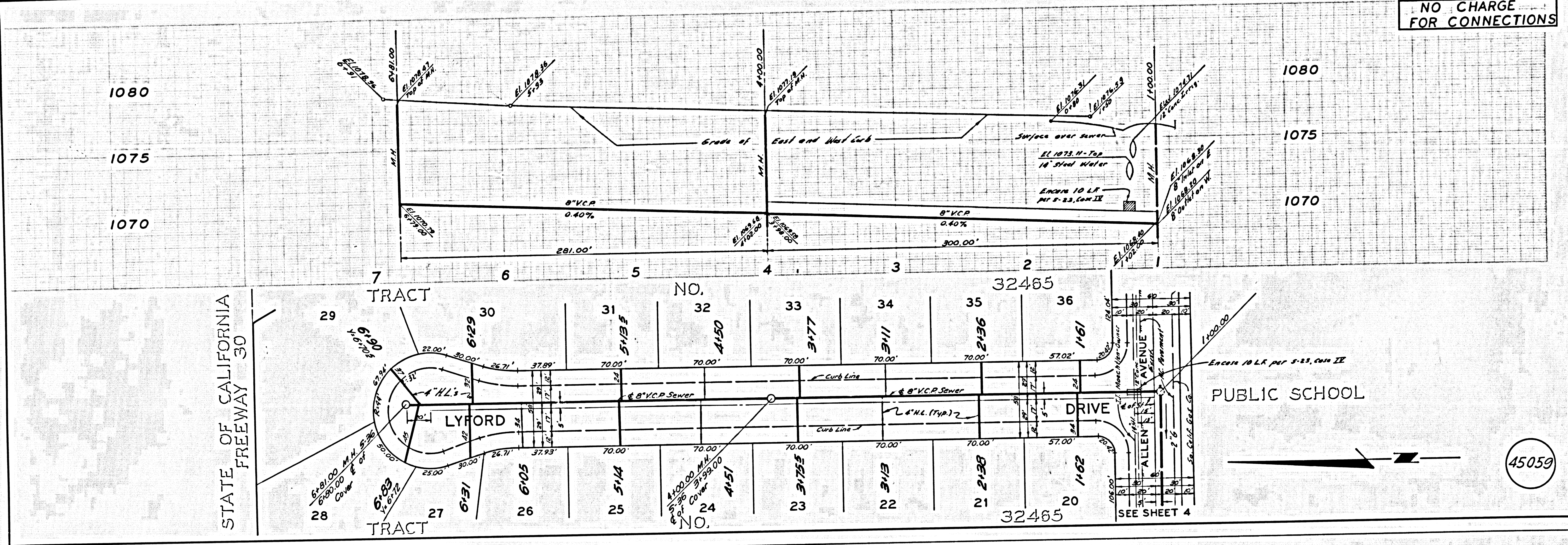
COUNTY OF LOS ANGELES, CALIFORNIA
 HARVEY Z. BRANDE, COUNTY ENGINEER J. D. PARKHURST, CHIEF ENGINEER
 APPROVED BY: *B.F. Norling* APPROVED BY: *J. D. Parkhurst*
 REGIONAL ENGINEER CHIEF ENGINEER
 CHECKED BY: *Thomas E. Johnson* CITY OF SAN DIMAS
 7 May 75 (DATE) Approved: *Frank Brack* 4/17/75
 REG. C.E. NO. 1815a City Engineer Date

SAN DIMAS BLDG. DIST. NO. 10 J.N. 0250.02

COLLECT CHARGES AS INDICATED

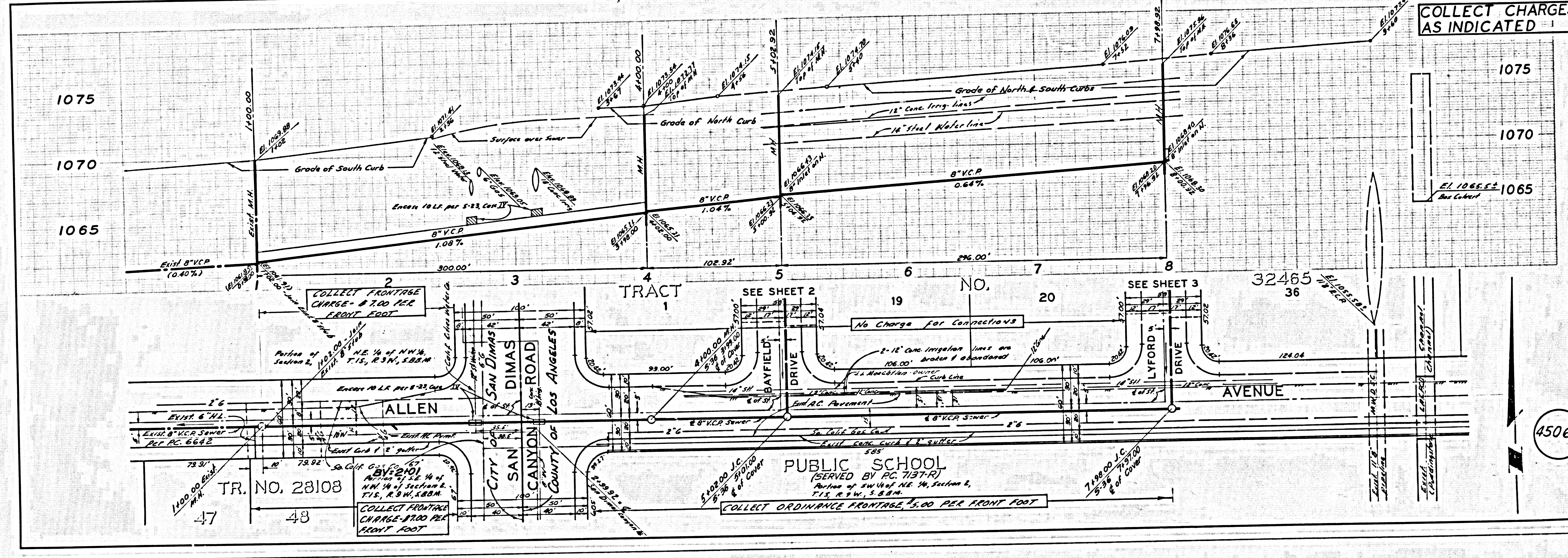


NO CHARGE FOR CONNECTIONS



45059

COLLECT CHARGES AS INDICATED



45060