

ALICE EM THAYSON ROAD

B.M. D-155 ELEV. 299.06 FB. 2197-246
NORTON AVE. & HAYWORTH AVE.
N.W. COR. WIRE SPE. 9" x 1/4" C.R.
F.B. 2197-17

B.M. M.W. 70 ELEV. 173.585 F.B. 2708-11
MELROSE AVE. & WESTBOURNE DR. N.E. COR.
CROSS SEWER IN LEAD IN CURB
at end Catch Basin.

NOTICE TO CONTRACTOR

THE EXISTENCE AND LOCATION OF ANY UNDERGROUND UTILITY PIPES OR STRUCTURES SHOWN ON THESE PLANS ARE OBTAINED BY A SEARCH OF THE AVAILABLE RECORDS. TO THE BEST OF OUR KNOWLEDGE THERE ARE NO EXISTING UTILITIES EXCEPT AS NOTED ON THIS PLAN.

THE CONTRACTOR SHALL CONTACT ALL UTILITY COMPANIES FOR UTILITY MARKING AND COORDINATION PRIOR TO CONSTRUCTION.

THE CONTRACTOR IS REQUIRED TO TAKE PRECAUTIONARY MEASURES TO PROTECT THE UTILITY LINES SHOWN AND ANY OTHER LINES NOT OF RECORD OR NOT SHOWN ON THIS DRAWING.

ALL SEWER PIPES AND APPURTENANCES SHALL BE ABANDONED OR REMOVED IN ACCORDANCE WITH SEC. 306-51 OF THE STANDARD SPECIFICATIONS.

CONTRACTOR SHALL MAINTAIN SEWER SERVICE AT ALL TIMES DURING CONSTRUCTION OF MAIN LINE SEWER AND HOUSE LATERAL RECONNECTIONS.

NO CONNECTION FOR THE DISPOSAL OF INDUSTRIAL WASTES SHALL BE MADE TO SEWERS SHOWN ON THESE DRAWINGS UNLESS A PERMIT FOR INDUSTRIAL WASTE WATER DISCHARGE HAS BEEN ISSUED BY THE SANITATION DISTRICTS FOR SAID CONNECTION.

GENERAL NOTES:

REFER TO SECTION 7-18.4.1 OF STANDARD SPECIFICATIONS REGARDING SAFETY DEVICES.
ALL MANHOLES SHALL BE EITHER BRICK OR PRECAST CONCRETE PER S-24, EXCEPT AS NOTED.
"T" OR "Y" BRANCHES MAY BE USED FOR CONNECTIONS TO MAIN 12" SEWER EXCEPT AS NOTED.
VERTICAL CURB FOR SEWERS SHALL BE TYPE "B", "C", "D" OR "E" PER SECTION 306-2 OF STANDARD SPECIFICATIONS.
ALL JOINTS BETWEEN CURB-TO-CURB AND CURB-TO-PIPE SHALL BE MADE WITH A RUBBER GASKET TYPE "A" OR "B" PER SECTION 306-2 OF STANDARD SPECIFICATIONS.
SEWERS TO BE TESTED FOR LEAKAGE PER SECTION 306-2.6 OF STANDARD SPECIFICATIONS AND SPECIAL PROVISIONS.
IF POWER-TOUCH OR OTHER METHOD OF TESTING THE SEWER SHALL BE SPECIFIED, THE 2" TEST CASE IS TWO FEET ON EACH SIDE FROM THE POINT OF INTERFERENCE.
NO REVISIONS SHALL BE MADE ON THESE PLANS WITHOUT THE APPROVAL OF THE COUNTY ENGINEER.

COUNTY SANITATION DISTRICTS SHALL BE NOTIFIED 72 HOURS PRIOR TO THE FOLLOWING SO THAT REQUIRED INSPECTION CAN BE MADE.
(PHONE: 862-5905 - 638-1161).

ACCEPTANCE OF THE PROJECT:
ALL CONCRETE CROSS CUTTERS, CURBS, GUTTERS, PAVEMENT, AND DRIVEWAYS SHALL BE TUNNELED OR JACKED PER LOS ANGELES COUNTY ROAD DEPARTMENT REQUIREMENTS.

STREET RESURFACING:
STREET RESURFACING METHODS SHALL BE IN ACCORDANCE WITH SECTION 304-1.8.8 OF THE SPECIAL PROVISIONS.
FINAL STREET RESURFACING IN ANY LOCATION SHALL BE COMPLETED WITHIN 30 DAYS AFTER COMPLETION OF TRENCH BACKFILL. THE RESURFACING AREA SHALL BE SEALED WITH 5% EMULSION AND 1/2" INCH CRUSHED ROCK.
RESURFACING SCHEDULE: RESURFACE TRENCH WITHIN PAVED AREA WITH TYPE "A" ASPHALTIC CONCRETE, 6" INCHES IN THICKNESS. UNPAVED AREAS SHALL BE RESURFACED WITH TYPE "B" ASPHALTIC CONCRETE, EXCEPT AS NOTED BELOW.

Table with columns: STATION LIMITS, TYPE OF RESURFACING. Row 1: Melrose Avenue, 0+66 to 0+80, 9" OF P.C.C. OVER 8" OF C.A.B.

- THE FOLLOWING LATEST REVISED STANDARD PLANS ON FILE IN THE OFFICE OF COUNTY ENGINEER SHALL APPLY IN THE CONSTRUCTION OF THIS PROJECT:
LEGEND: 1-1 CRADLING AND ENCASEMENT, 1-2 STANDARD WYE OR TEE SUPPORT, 1-3 ALLOWABLE TRENCH WIDTHS, 1-4 RECTANGULAR SHALLOW MANHOLE, 1-5 RECTANGULAR MANHOLE FRAME & COVERS, 1-6 PRECAST CONCRETE SHALLOW MANHOLE, 1-7 MINIMUM PUBLIC SAFETY REQUIREMENT, 1-8 BRIDGING INTO EXISTING BRIDGE OR REPAIRING FOR SEWER PIPES, 1-9 SPECIAL SUPPORT AND PROTECTION, 1-10 CRADLING AND ENCASEMENT, 1-11 STANDARD WYE OR TEE SUPPORT, 1-12 ALLOWABLE TRENCH WIDTHS, 1-13 RECTANGULAR SHALLOW MANHOLE, 1-14 RECTANGULAR MANHOLE FRAME & COVERS, 1-15 PRECAST CONCRETE SHALLOW MANHOLE.

- THE CONTRACTOR SHALL OBTAIN THE FOLLOWING PERMITS PRIOR TO CONSTRUCTION:
1. LOS ANGELES COUNTY ROAD DEPARTMENT (SEE EXEMPT)
2. LOS ANGELES COUNTY ENGINEER, CONSTRUCTION PERMIT (SEE EXEMPT)
3. PRIOR TO EXECUTION OF THIS CONTRACT AGREEMENT BY THE COUNTY, THE CONTRACTOR SHALL OBTAIN AT HIS EXPENSE A PERMIT TO EXCAVATE FROM THE STATE OF CALIFORNIA, DIVISION OF INDUSTRIAL SAFETY.
THE UNDERGROUND UTILITY COMPANIES WITHIN THE LIMITS OF THIS PROJECT ARE AS FOLLOWS:
(1) Southern California Gas Company. (4) Atlantic-Richfield Oil Co.
(2) City of Los Angeles Dept. of Water & Power (5) City of Beverly Hills Water Dept.
(3) County of Los Angeles Road Department (West Hollywood Lighting Dist.)

CASH CONTRACT NO. 9134

SANITARY SEWERS
TO BE CONSTRUCTED IN

NORTON AVENUE
ETAL

1 SHEETS, 2 PAGES

SCALE: VERT. 1" = 4', HORIZ. 1" = 40'

FEBRUARY, 1976

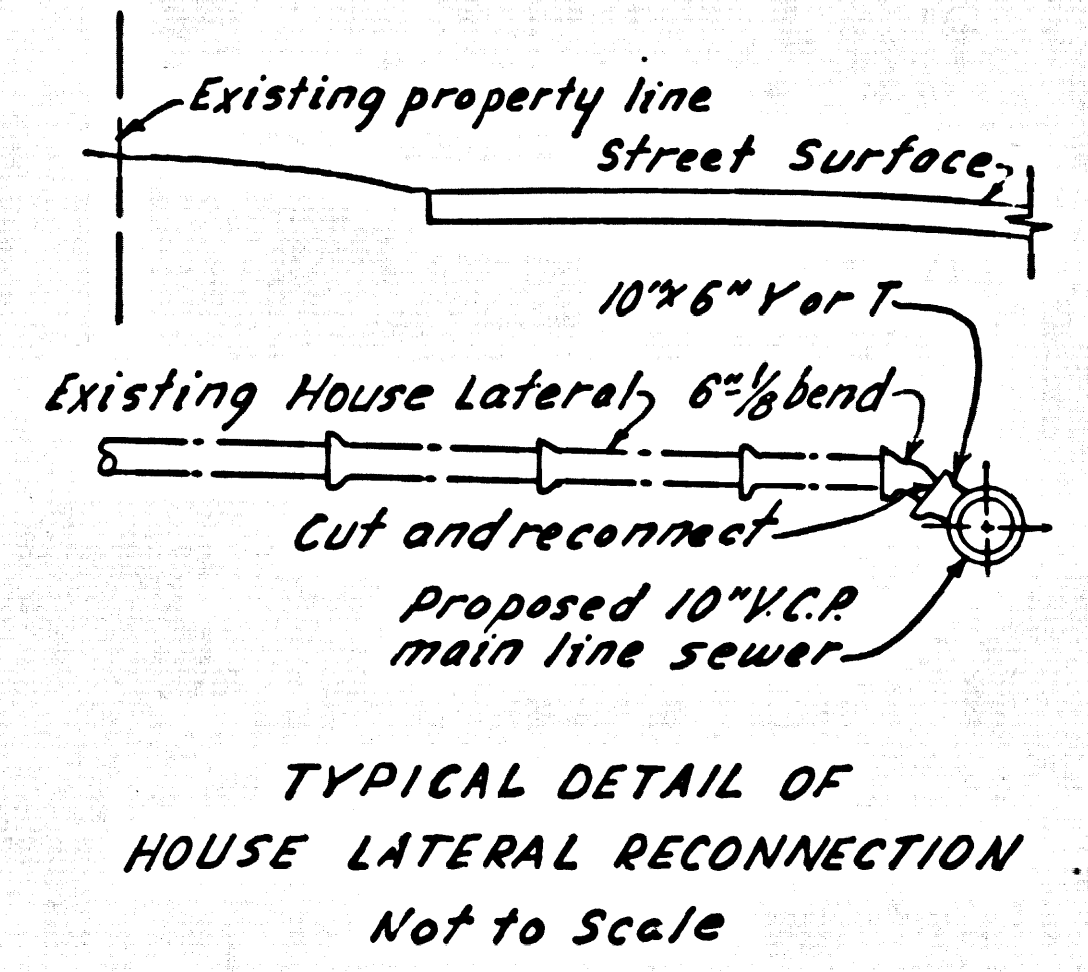
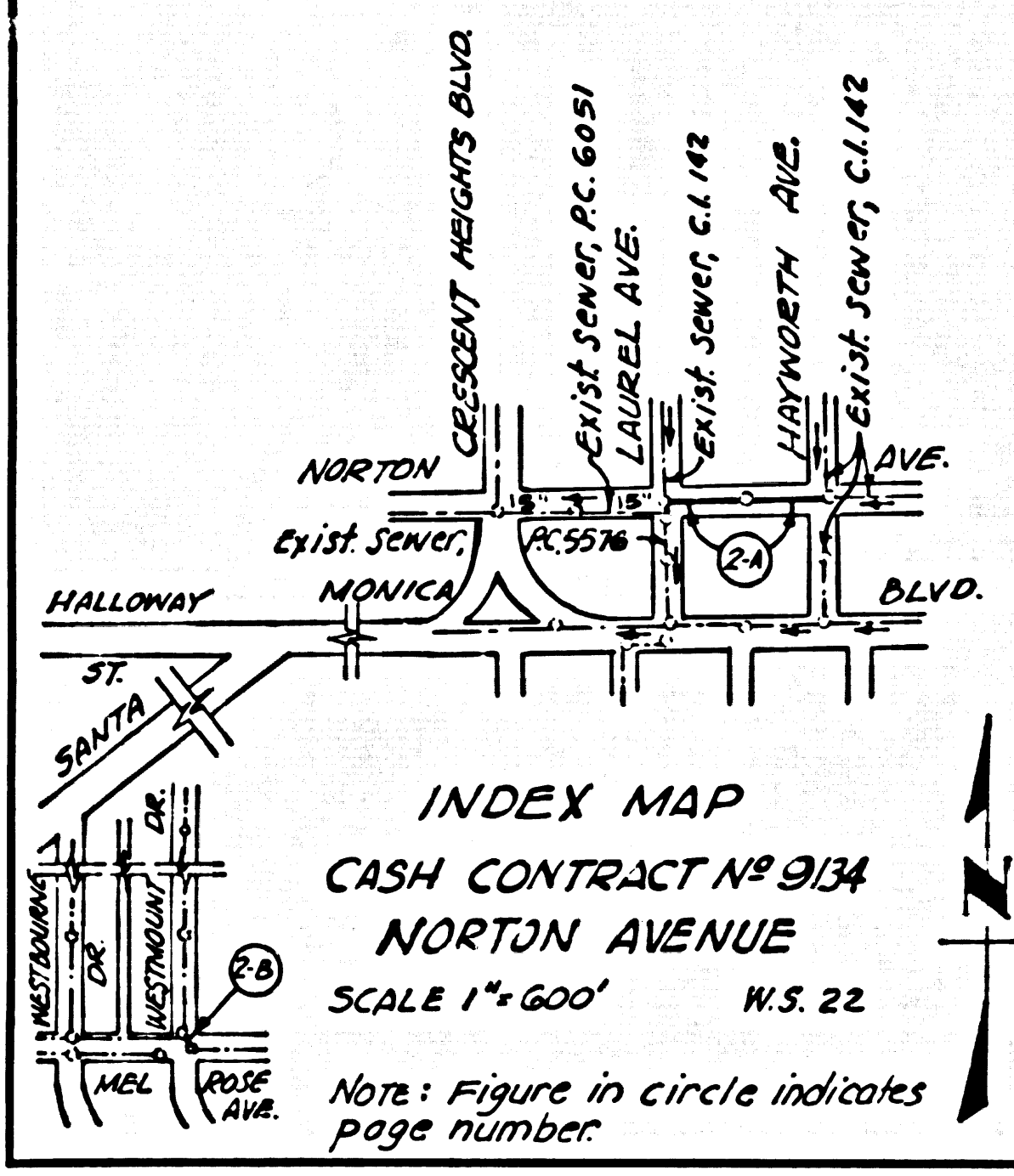
COUNTY OF LOS ANGELES, CALIFORNIA
JAMES T. ROSTON COUNTY ENGINEER
CHIEF DEPUTY

APPROVED: [Signature] 2/20/76
HEAD, DESIGN BRANCH DATE
DESIGNED: [Signature] 2-25-76
REG. C. E. NO. 22022 DATE

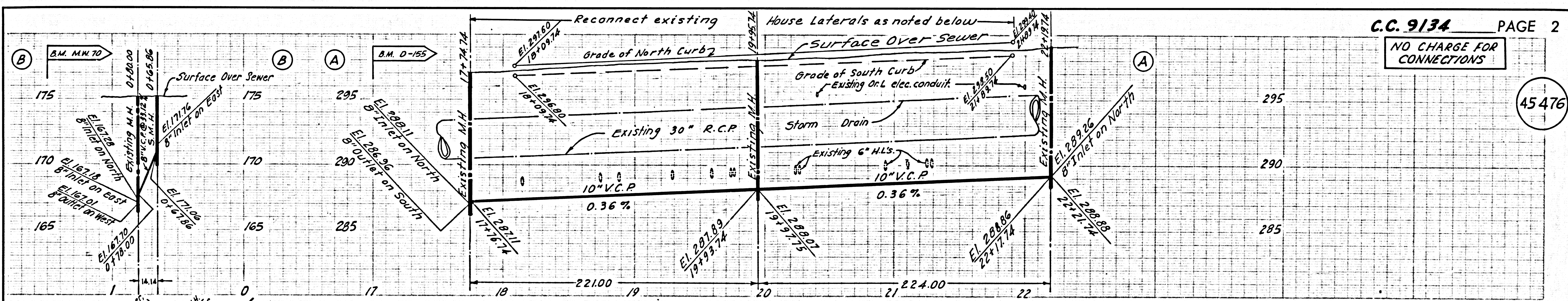
APPROVED: [Signature]
OFFICE ENGINEER

NOTES:
WORK SHALL BE CONSTRUCTED ACCORDING TO THE STANDARD SPECIFICATIONS FOR PUBLIC WORKS CONSTRUCTION (1973 EDITION WITH 1974 SUPPLEMENTS AND COUNTY ENGINEER SPECIAL PROVISIONS FOR THE CONSTRUCTION OF SANITARY SEWERS DATED MARCH 4, 1974) AND SHALL BE PROSECUTED ONLY IN THE PRESENCE OF THE COUNTY ENGINEER.
THE CONTRACTOR SHALL NOTIFY THE DESIGN DIVISION BY TELEPHONE (213) 974-7283 AT LEAST 24 HOURS BEFORE STATING ANY WORK UNDER THIS CONTRACT.
GRADES TO WHICH THIS IMPROVEMENT IS TO BE CONSTRUCTED ARE SHOWN ON PLANS AND PROFILES. GRADE POINTS FOR TOP OF CURB, CENTER LINE OF STREET OR CENTER LINE OF ALLEY ARE SHOWN BY CIRCLES ON PROFILES. AT ALL POINTS BETWEEN DESIGNATED POINTS THE GRADE SHALL BE ESTABLISHED SO AS TO CONFORM TO A STRAIGHT LINE DRAWN BETWEEN SAID DESIGNATED POINTS. ELEVATIONS ARE IN FEET ABOVE U.S.C. & G.S. SEA LEVEL DATUM OF 1929.
THIS DRAWING AND THE DATA HEREON ARE HEREBY MADE A PART OF THE SPECIFICATIONS.

Table with columns: LAYOUT, TRACED, F.B. 2197, F.B. 2708, WEST HOLLYWOOD, CHECKED, MAINTENANCE, BUILDING DISTRICT NO. 9.



NO CHARGE FOR CONNECTIONS
W.L. Jan 9/4/75



NO CHARGE FOR CONNECTIONS

45476

