

CASH CONTRACT NO. 9153

SANITARY SEWERS

TEDFORD DRIVE

AND OTHER RIGHT OF WAY

1 SHEET, 2 PAGES

SCALE: VERT. 1"=4'

JUNE, 1975

COUNTY OF LOS ANGELES, CALIFORNIA

HARVEY T. BRANDT COUNTY ENGINEER

APPROVED: [Signature] 6/5/75

DESIGNED: Brian E. Scanlon 6-5-75

JOHN D. PARKHURST CHIEF ENGINEER OF COUNTY SANITATION DISTRICT NO. 10

APPROVED: [Signature] OFFICE ENGINEER

NOTES: WORK SHALL BE CONSTRUCTED ACCORDING TO THE STANDARD SPECIFICATIONS FOR PUBLIC WORKS CONSTRUCTION (FIVE EDITION WITH 1974 SUPPLEMENTS) AND COUNTY ENGINEER SPECIAL PROVISIONS FOR THE CONSTRUCTION OF SANITARY SEWERS DATED MARCH 1, 1974 AND SHALL BE PROSECUTED ONLY IN THE PRESENCE OF THE COUNTY ENGINEER.

Table with columns: LAYOUT, TRACED, F.B. 1030, WHITTIER. Rows: TEN, TEST, MAY 75, MAY 75, A. B., W. S. 34, BUILDING DISTRICT NO. 11.

B.M. 1-79 ELEV. 120.252 (1971 Adj.) F.B. 3707-21 VALLEY VIEW IMPERIAL HIGHWAY NORTHEAST COR. 134.5 FT. NORTH & 389 FT. EAST OF CENTER LINES; 61.2 FT. NORTH OF NORTH END OF CURB RETURN 0.9 FT. EAST OF EAST CURB, IN TOP OF NORTHWEST CORNER OF STORM DRAIN CATCH BASIN, A 2 1/2" COUNTY ENGINEER BRASS DISC STAMPED "B.M. 1-79 1970 R.E. 2083"

NOTICE TO CONTRACTOR

THE EXISTENCE AND LOCATION OF ANY UNDERGROUND UTILITY PIPES OR STRUCTURES SHOWN ON THESE PLANS ARE OBTAINED BY A SEARCH OF THE AVAILABLE RECORDS. TO THE BEST OF OUR KNOWLEDGE THERE ARE NO EXISTING UTILITIES EXCEPT AS NOTED ON THIS PLAN.

THE CONTRACTOR SHALL CONTACT ALL UTILITY COMPANIES FOR UTILITY MARKING AND COORDINATION PRIOR TO CONSTRUCTION.

THE CONTRACTOR IS REQUIRED TO TAKE PRECAUTIONARY MEASURES TO PROTECT THE UTILITY LINES SHOWN AND ANY OTHER LINES NOT OF RECORD OR NOT SHOWN ON THIS DRAWING.

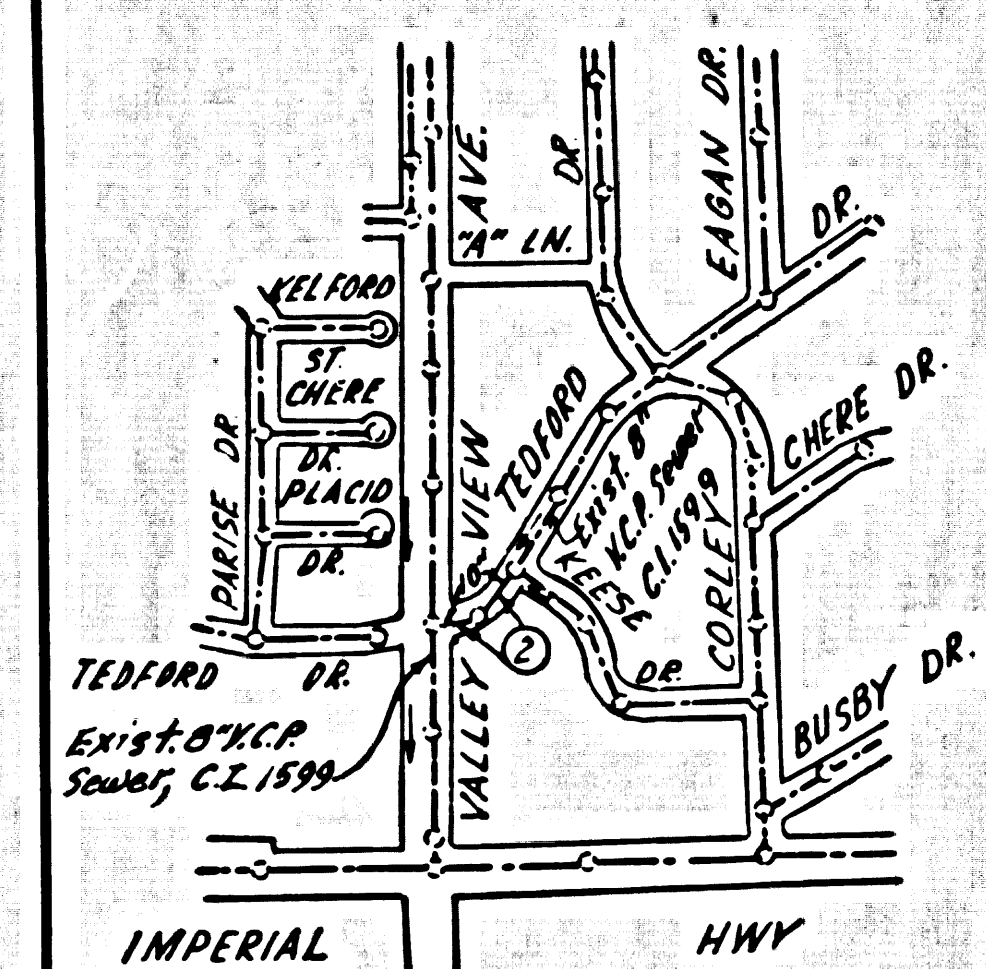
ALL SEWER PIPES AND APPURTENANCES SHALL BE ABANDONED OR REMOVED IN ACCORDANCE WITH SEC. 306-5.1 OF THE STANDARD SPECIFICATIONS

CONTRACTOR SHALL MAINTAIN SEWER SERVICE AT ALL TIMES DURING CONSTRUCTION OF MAIN LINE SEWER AND HOUSE LATERALS.

NO CONNECTION FOR THE DISPOSAL OF INDUSTRIAL WASTES SHALL BE MADE TO SEWERS SHOWN ON THESE DRAWINGS UNLESS A PERMIT FOR INDUSTRIAL WASTE WATER DISCHARGE HAS BEEN ISSUED BY THE SANITATION DISTRICTS FOR SAID CONNECTION.

COUNTY SANITATION DISTRICTS SHALL BE NOTIFIED 24 HOURS PRIOR TO THE FOLLOWING SO THAT REQUIRED INSPECTION CAN BE MADE. (PHONE: 638-1164)

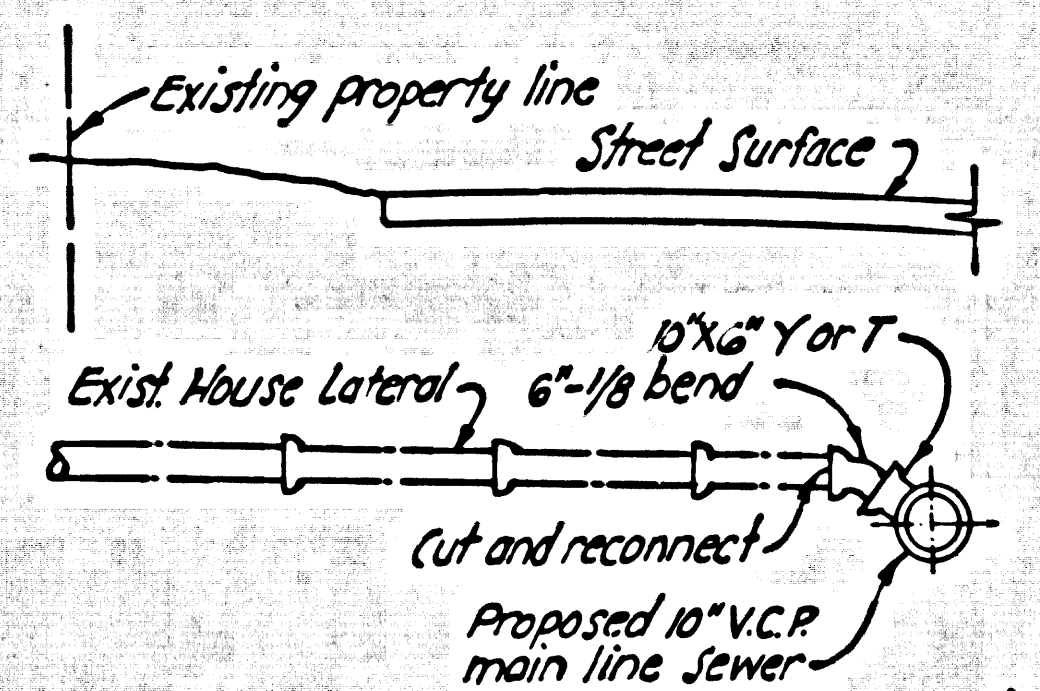
ACCEPTANCE OF THE PROJECT.



INDEX MAP C.C. 9153 TEDFORD DR. Scale: 1"=600'

Note: Figure in circle indicates page number

NO CHARGE FOR CONNECTIONS W. J. Jan



TYPICAL DETAIL OF HOUSE LATERAL RECONNECTION Not to Scale

GENERAL NOTES: REFER TO SECTION 7-18.4.1 OF STANDARD SPECIFICATIONS REGARDING SAFETY ORDERS. 1" OR 1 1/2" BRANCHES MAY BE USED FOR CONNECTIONS TO MAIN LINE SEWER, EXCEPT AS NOTED.

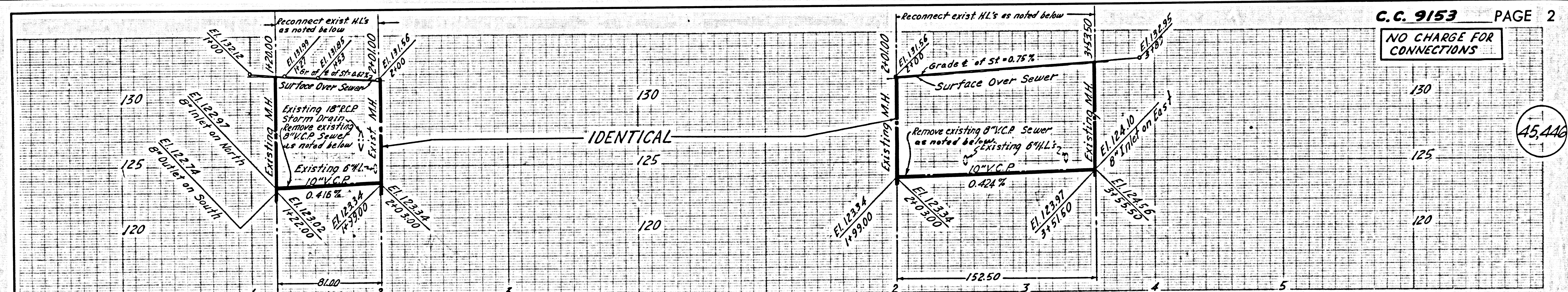
STREET RESURFACING: STREET RESURFACING METHOD SHALL BE IN ACCORDANCE WITH SECTION 306-1.6.9 OF THE SPECIAL PROVISIONS. FINAL STREET RESURFACING IN ANY LOCATION SHALL BE COMPLETED WITHIN 60 DAYS AFTER COMPLETION OF TRENCH BACKFILL.

Table with columns: PAGE NO., STREET, STATION LIMITS (FROM TO), TYPE OF RESURFACING. Row 1: Valley View Avenue, 1222, 1465, 5" of type X AC over 1" of C.A.B.

THE FOLLOWING LATEST REVISED STANDARD PLANS ON FILE IN THE OFFICE OF COUNTY ENGINEER SHALL APPLY IN THE CONSTRUCTION OF THIS PROJECT. LEGEND: 8-1 CLEAVING AND ENCASING 8-23

THE CONTRACTOR SHALL OBTAIN THE FOLLOWING PERMITS PRIOR TO CONSTRUCTION: 1. LOS ANGELES COUNTY ROAD DEPARTMENT (SEE EXEMPT)

1. LOS ANGELES COUNTY ENGINEER SEWER CONSTRUCTION PERMIT (FOR EXEMPT) 2. PRIOR TO EXECUTION OF THE CONTRACT AGREEMENT BY THE COUNTY, THE CONTRACTOR SHALL OBTAIN AT HIS EXPENSE A PERMIT TO ACCELERATE FROM THE STATE OF CALIFORNIA DIVISION OF INDUSTRIAL WATER UNDERGROUND UTILITY COMPANIES WITHIN THE LIMITS OF THIS PROJECT ARE AS FOLLOWS: (a) SOUTHWEST WATER (b) SOUTHERN CALIFORNIA GAS CO.



NO CHARGE FOR CONNECTIONS

45,446

