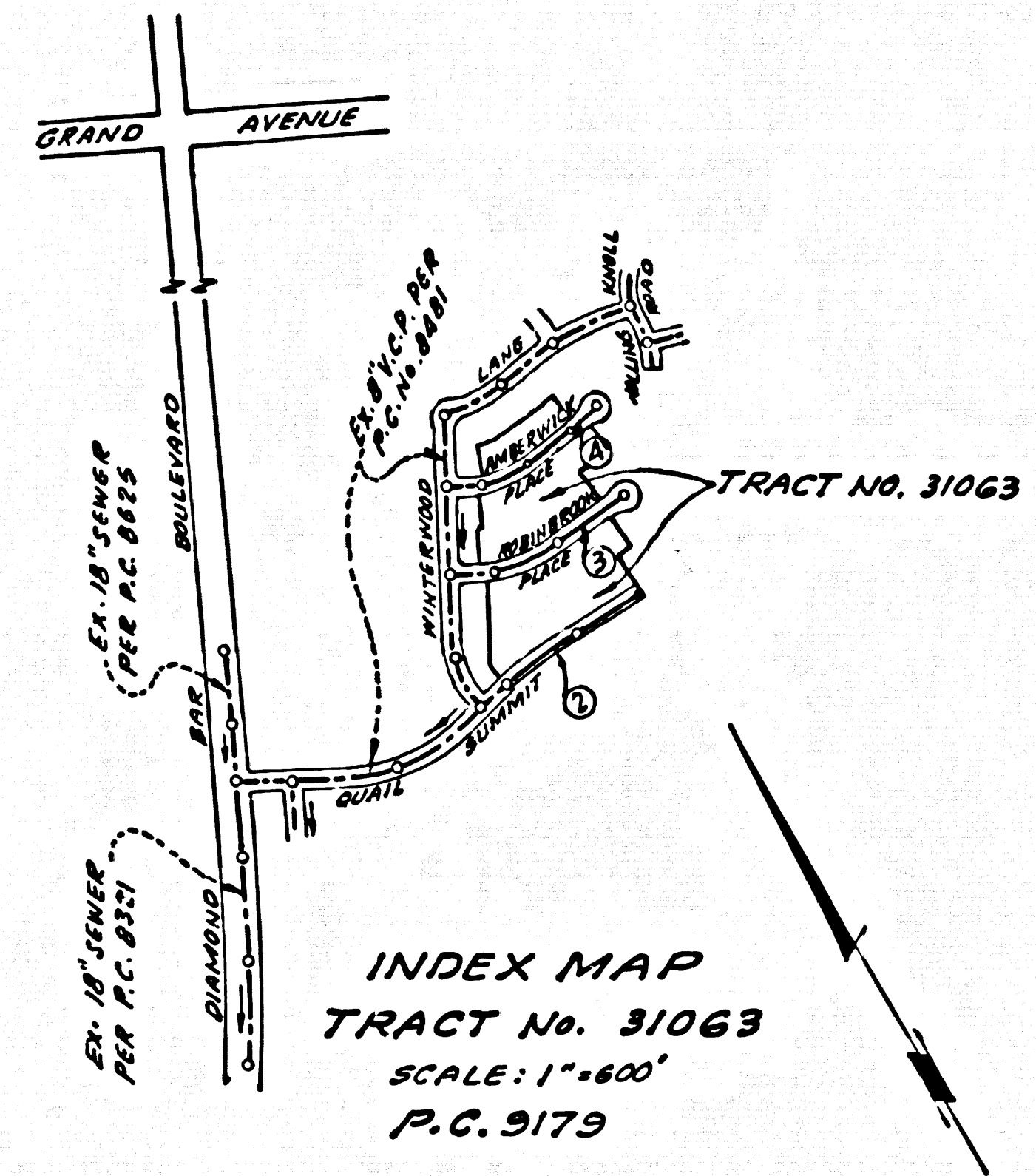


B.M. B.G. 3911 ELEV. 895.457  
 L. & T. IN E. END OF C.B. 48 S. AND 36 W.  
 1/4 INT. GRAND AVE. & DIAMOND  
 BAR BLVD. MKD. B.M. C-12  
 OTTERBEIN 1970 QUAD. 1970 ADJ.



THE FOLLOWING LATEST REVISED STANDARD PLANS ON FILE IN THE OFFICE OF THE COUNTY ENGINEER SHALL APPLY IN THE CONSTRUCTION OF THIS PROJECT.

| LEGEND                                  |      |
|---|------|
| MINIMUM PUBLIC SAFETY REQUIREMENTS      | S-1  |
| BRICK MANHOLE                           | S-2  |
| STANDARD MANHOLE STEP                   | S-17 |
| BEDDING FOR SEWER PIPE                  | S-21 |
| CRADLING AND ENCASUREMENT               | S-23 |
| WYE OR TEE SUPPORT                      | S-26 |
| ALLOWABLE TRENCH WIDTHS                 | S-33 |
| LOCKING MANHOLE FRAME COVER             | S-35 |
| NON-REINFORCED PRECAST CONCRETE MANHOLE | S-36 |

DOUBLE SCALE  
 SAN DIMAS BLDG. DIST. NO. 10

PROFILE ALIGNMENT AND GRADE OF  
 SANITARY SEWERS PAGE 1  
 CONSTRUCTED IN

TRACT No. 31063  
 PRIVATE CONTRACT NO. 9179

W.S. 99-C3  
 2 SHEETS, 4 PAGES  
 SCALE: VERT. 1"=6'  
 HORIZ. 1"=40' APRIL, 1975  
 PREPARED IN THE OFFICES OF  
 E.L. PEARSON AND ASSOCIATES  
 REG. C.E. NO. 17532

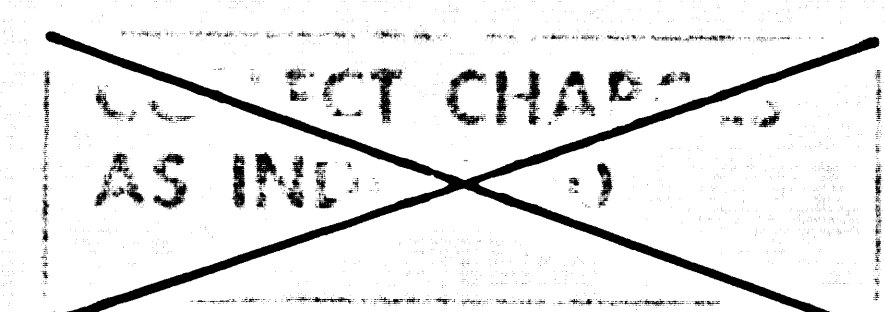
45429

- NOTES:
- PROPOSED STAKES ON THE PROPERTY LINE OR PROPERTY LINES PRODUCED AT RIGHT ANGLES TO THE SEWER LINE AT THE CENTER LINE OF EACH MANHOLE.
  - NO REPRESENTATIVE OF THE COUNTY ENGINEER WILL SURVEY OR LAY OUT ANY PORTION OF THE WORK.
  - THE PRIVATE ENGINEER SHALL FURNISH THE COUNTY ENGINEER WITH GRADE SHEETS AND STATIONING FOR ALL HOUSE LATERALS AND 72" DIA. MANHOLES AND SHALL PROVIDE STAKES FOR THEM AT THEIR PROPOSED LOCATIONS WITH STATIONING PLAINLY MARKED. ALL HOUSE LATERALS SHALL BE CONSTRUCTED IN A STRAIGHT ALIGNMENT AT RIGHT ANGLES FROM THE MAIN LINE SEWER EXCEPT AS SHOWN ON THE PLANS. HOUSE LATERALS FROM CHIMNEYS SHALL NOT HAVE AN ANGLE OF LESS THAN 45° WITH THE MAIN LINE SEWER. ANY CHANGE IN ALIGNMENT SHALL BE REQUESTED BY WRITING BY THE PRIVATE ENGINEER.
  - THE PRIVATE ENGINEER SHALL FURNISH THE HOUSE LATERAL STOPS AT THE PROPERTY LINE BELOW THE TOP OF CURB ELEVATION FOR EACH HOUSE LATERAL ON THE GRADE SHEET.
  - NO REVISIONS SHALL BE MADE IN THESE PLANS WITHOUT THE APPROVAL OF THE COUNTY ENGINEER.
  - THE CONTRACTOR SHALL NOTIFY THE DISTRICT DIVISION BY TELEPHONE (818) 374-7283 AT LEAST TWENTY-FOUR HOURS BEFORE STARTING ANY WORK UNDER THIS CONTRACT.
  - ALL STRUCTURES SHALL BE BUILT TO MEET THE REQUIREMENTS FOR 2-8 OR PRECAST CONCRETE MANHOLES PER S-36 EXCEPT AS NOTED.
  - WYE OR TEE SUPPORTS SHALL BE USED FOR CONNECTIONS TO MAIN LINE SEWERS EXCEPT AS NOTED.
  - MANHOLE TOPS IN UNIMPROVED RIGHTS-OF-WAY TO BE SIX INCHES ABOVE FINISHED GRADE.
  - ALL CONSTRUCTION SHALL BE IN ACCORDANCE WITH THE SPECIAL PROVISIONS WHICH WILL BE REQUIRED FOR BACKFILL IN STREETS. CONSTRUCTION OF BRICK OR CONCRETE MANHOLES BY A QUALIFIED REGISTERED TESTING LABORATORY SHALL BE REQUIRED BY THE COUNTY ENGINEER. THE RESULTS OF SUCH TESTING SHALL BE FURNISHED TO THE COUNTY ENGINEER. VITRIFIED CLAY PIPE SHALL BE TYPE "A" OF THE STANDARD SPECIFICATIONS FOR PIPE AND FITTINGS. IF A POWER POLE IS WITHIN THREE FEET OF THE SEWER, THE SEWER SHALL BE ENCASED PER S-23, CASE II UNLESS OTHERWISE APPROVED BY THE COUNTY ENGINEER.
  - IF DURING THE COURSE OF CONSTRUCTION IT IS DETERMINED THAT THERE IS LESS THAN FOUR FEET OF COVER OVER THE TOP OF A MAIN LINE OR HOUSE LATERAL V.C.P. SEWER WHICH IS NOT INDICATED ON THE PLANS, THE PIPE SHALL BE ENCASED PER S-23, CASE II UNLESS OTHERWISE APPROVED BY THE COUNTY ENGINEER.
  - HOUSE LATERALS TO BE CONSTRUCTED WITH INVERTS AT PROPERTY LINE 6 FEET BELOW CURB GRADE EXCEPT AS NOTED.
  - RESURFACE ALL TRENCHES WITHIN PAVED AREAS TO MEET L.A. COUNTY ROAD DEPT. OR CALIFORNIA STATE HIGHWAY REQUIREMENTS IN ACCORDANCE WITH PERMITS.
  - SEWERS TO BE TESTED FOR LEAKAGE PER SECTION 308-1.4 OF STD. SPEC. (SPECIAL PROVISIONS).
  - REFER TO SECTION 7-10-2-1 OF THE STD. SPEC. REGARDING SAFETY ORDERS.
  - ALL UNITS OTHER THAN CAST IRON OR VITRIFIED CLAY PIPE SHALL BE MADE WITH A RUBBER GULVE UNLESS OTHERWISE APPROVED BY THE COUNTY ENGINEER.
  - PRIOR TO RESURFACING OF THE ENCASED SEWER CONSTRUCTION PERMIT BY THE COUNTY ENGINEER THE CONTRACTOR SHALL OBTAIN A PERMIT TO EXCAVATE FROM THE STATE OF CALIFORNIA, DIVISION OF INDUSTRIAL SAFETY.

COUNTY SANITATION DISTRICTS SHALL BE NOTIFIED 24 HOURS PRIOR TO THE FOLLOWING SO THAT REQUIRED INSPECTION CAN BE MADE.  
 (PHONE: 626-8035 • 638-1104)

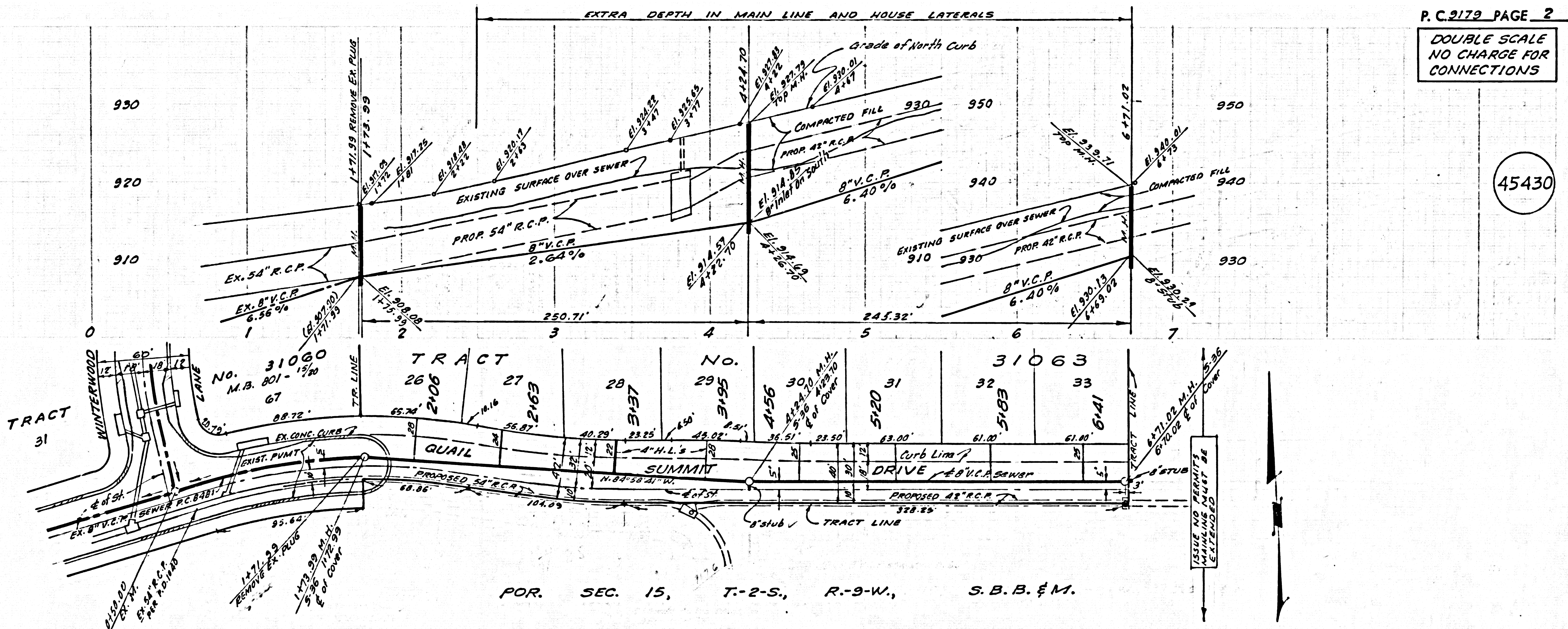
ACCEPTANCE OF THE PLAN:

NOTICE TO CONTRACTOR  
 The existence and location of any underground utility pipes or structures shown on these plans are obtained by a search of the available records to the best of my knowledge there are no existing utilities except as shown on these plans. The contractor is required to take due precautionary measures to protect the utility lines shown and any other lines not of record or not shown on these plans.  
 J. D. Parkhurst  
 COUNTY ENGINEER



NO CONNECTION FOR THE DISPOSAL OF INDUSTRIAL WASTES SHALL BE MADE TO SEWERS SHOWN ON THESE DRAWINGS UNLESS A PERMIT FOR INDUSTRIAL WASTE WATER DISPOSAL HAS BEEN ISSUED BY THE SANITATION DISTRICTS FOR SAID CONNECTION.

SAN DIMAS BLDG. DIST. 10 U.N. 0250.02

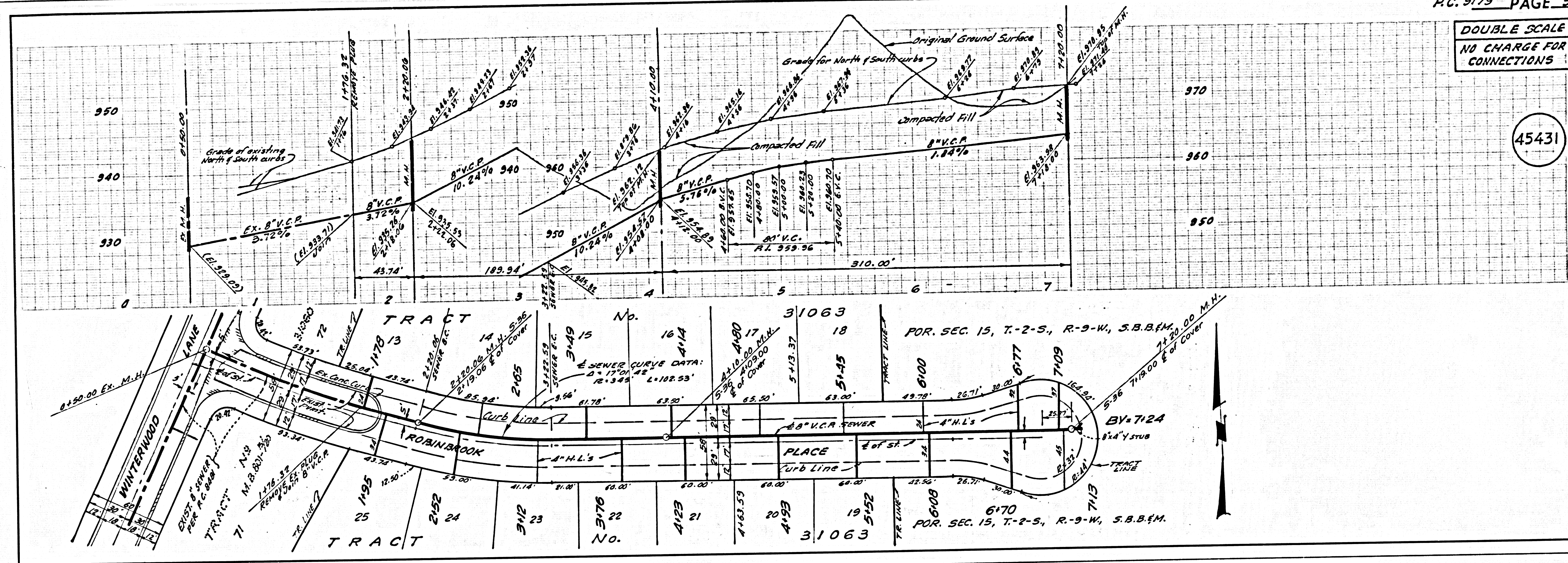


P.C. 9179 PAGE 2  
 DOUBLE SCALE  
 NO CHARGE FOR CONNECTIONS

45430

DOUBLE SCALE  
NO CHARGE FOR  
CONNECTIONS

45431



DOUBLE SCALE  
NO CHARGE FOR  
CONNECTIONS

45432

