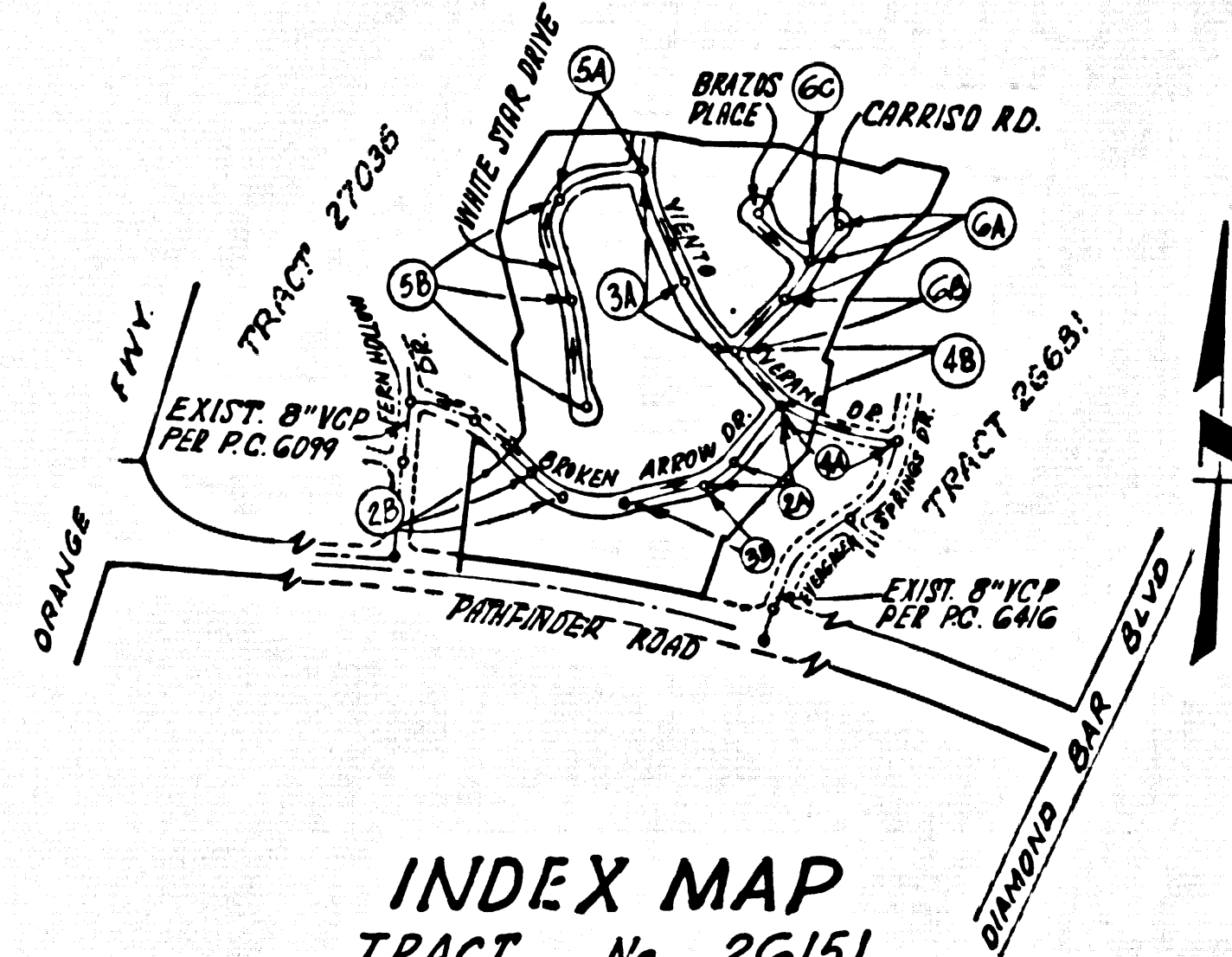


B.M. BG 3130 ELEV. 856.836  
 R.D.B.M. TRG N. CB 1FT. W. BCR @ NW  
 COR. PATRIOT RD. & EVERGREEN SPRINGS  
 DR. 40' N. & 32' W. APPROX. Q/L INT.  
 OTERBEIN QUAD. 197D



INDEX MAP  
 TRACT No. 26151  
 P.C. 9186  
 SCALE: 1" = 600'

PRIVATE ENGINEER'S  
 NOTICE TO CONTRACTOR

THE EXISTENCE AND LOCATION OF ANY UNDERGROUND UTILITY PIPES OR STRUCTURES SHOWN ON THESE PLANS ARE OBTAINED BY A SEARCH OF THE AVAILABLE RECORDS TO THE BEST OF OUR KNOWLEDGE THERE ARE NO EXISTING UTILITIES EXCEPT AS SHOWN ON THIS MAP. THE CONTRACTOR IS REQUIRED TO TAKE PRECAUTIONARY MEASURES TO PROTECT ALL UTILITY LINES SHOWN AND ANY OTHER LINES NOT SHOWN ON THESE PLANS.

NOTE: NUMBERS IN CIRCLES INDICATE PAGE NUMBERS

DOUBLE SCALE  
 GENERAL NOTES:

- REVISIONS ARE IN RED ABOVE U.S.C. & G.S. SEA LEVEL DATUM OF 1929.
- NO REVISIONS SHALL BE MADE IN THESE PLANS WITHOUT THE APPROVAL OF THE COUNTY ENGINEER.
- NO REPRESENTATIVE OF THE COUNTY ENGINEER SHALL BE ON SITE AT ANY PORTION OF THE WORK.
- GRADES TO WHICH THE IMPROVEMENT IS TO BE CONSTRUCTED ARE SHOWN ON PLANS AND PROFILES. GRADE POINTS FOR TOP OF CURBS, WATER POINTS THE GRADE SHALL BE ESTABLISHED SO AS TO CONFORM TO A STRAIGHT LINE DRAWN BETWEEN SAID DESIGNATED POINTS.
- THE PRIVATE ENGINEER SHALL FURNISH THE COUNTY ENGINEER WITH GRADE SHEETS AND STATIONING FOR ALL HOUSE LATERALS AND "T" OR "Y" BRANCHES AND SHALL PROVIDE STAKES FOR THEM AT THEIR PROPER LOCATIONS WITH STATIONING PLAINLY MARKED. ALL HOUSE LATERALS SHALL BE CONSTRUCTED IN A STRAIGHT ALIGNMENT AT RIGHT ANGLES FROM THE MAIN LINE SEWER EXCEPT AS SHOWN ON THE PLANS. HOUSE LATERALS FROM CHIMNEYS SHALL NOT HAVE AN ANGLE OF LESS THAN 45° WITH THE MAIN LINE SEWER. ANY CHANGE IN ALIGNMENT SHALL BE REQUESTED IN WRITING BY THE PRIVATE ENGINEER.
- THE PRIVATE ENGINEER SHALL FURNISH THE HOUSE LATERAL NOTES AT THE PROPERTY LINE BELOW THE TOP OF CURB ELEVATION FOR EACH HOUSE LATERAL ON THE GRADE SHEET.
- BEFORE WORK CAN BE STARTED, THE CONTRACTOR MUST OBTAIN A PERMIT TO EXCAVATE IN COUNTY STREETS FROM THE L.A. COUNTY ROAD DEPT., DISTRICT OFFICE NO. 1, AND PAY A FEE TO THE COUNTY ENGINEER, 201 SOUTH 7TH AVE., SAN DIMAS REGIONAL OFFICE, TO COVER THE COST OF CONSTRUCTION INSPECTION AND RECORD PLANS.
- IF WORK IS TO BE DONE IN A STATE HIGHWAY, A PERMIT MUST BE OBTAINED FROM THE STATE OF CALIFORNIA, DIVISION OF HIGHWAYS, 128 SOUTH SPRING STREET, LOS ANGELES, CALIFORNIA.
- APPROVAL OF THIS PLAN BY THE COUNTY OF LOS ANGELES DOES NOT CONSTITUTE A REPRESENTATION AS TO THE ACCURACY OF THE LOCATION OR THE EXISTENCE OR NON-EXISTENCE OF ANY UNDERGROUND UTILITY PIPE, OR STRUCTURE WITHIN THE LIMITS OF THE PROJECT. THIS NOTE APPLIES TO ALL PAGES.
- REFER TO SECTION 7-18.4.1 OF THE STANDARD SPECIFICATIONS, REGARDING SAFETY OBSTACLES.
- PRIOR TO RESUMPTION OF THE ROADWAY WORKER CONSTRUCTION PERMIT BY COUNTY ENGINEER, THE CONTRACTOR SHALL OBTAIN A PERMIT TO EXCAVATE FROM THE STATE OF CALIFORNIA, DIVISION OF INDUSTRIAL SAFETY.

COUNTY SANITATION DISTRICTS SHALL BE NOTIFIED 24 HOURS PRIOR TO THE FOLLOWING SO THAT REQUIRED INSPECTION CAN BE MADE.  
 (PHONE: 962-8205 & 689-1181)

CONSTRUCTION NOTES:

- WORK SHALL BE CONSTRUCTED ACCORDING TO THE STANDARD SPECIFICATIONS FOR PUBLIC WORKS CONSTRUCTION (1973 EDITION) WITH THE SUPPLEMENTARY AND COUNTY ENGINEER SPECIAL PROVISIONS FOR THE CONSTRUCTION OF SANITARY SEWERS DATED MARCH 1, 1978, AND SHALL BE PROSECUTED ONLY IN THE PRESENCE OF THE COUNTY ENGINEER.
  - THE CONTRACTOR SHALL NOTIFY THE DESIGN DIVISION BY TELEPHONE, (213) 974-7233, AT LEAST TWENTY-FOUR HOURS BEFORE STARTING ANY WORK UNDER THIS CONTRACT.
  - HOUSE LATERALS TO BE CONSTRUCTED WITH INVERTS AT PROPERTY LINE & FEET BELOW CURB GRADE EXCEPT AS NOTED.
  - WYE OR TEE BRANCHES MAY BE USED FOR CONNECTIONS TO MAINLINE SEWERS EXCEPT AS NOTED.
  - ALL STRUCTURES SHALL BE EITHER BRICK MANHOLES PER S-3 OR PRECAST CONCRETE MANHOLES PER S-36, EXCEPT AS NOTED.
  - PROVIDE STAKES ON THE PROPERTY LINE OR PROPERTY LINES PRODUCED AT RIGHT ANGLES TO THE SEWER LINE AT THE CENTER LINE OF EACH MANHOLE.
  - MANHOLE TOPS IN UNIMPROVED RIGHTS OF WAY TO BE SIX INCHES ABOVE FINISHED GRADE.
  - VITRIFIED CLAY PIPE JOINTS SHALL BE TYPE "B", "P", OR "Q" PER STANDARD SPECIFICATIONS SECTION 306-2.
  - IF A POWER POLE IS WITHIN THREE FEET OF THE SEWER, THE SEWER SHALL BE ENCASED, PER S-23, CASE B, TWO FEET ON EACH SIDE FROM THE POINT OF INTERFERENCE.
  - IF DURING THE COURSE OF CONSTRUCTION IT IS DETERMINED THAT THERE IS LESS THAN FOUR FEET OF COVER OVER THE TOP OF A MAIN LINE OR HOUSE LATERAL V.C.P. SEWER WHICH IS NOT INDICATED ON THE PLANS, THE PIPE SHALL BE ENCASED PER S-23, CASE B, UNLESS OTHERWISE APPROVED BY THE COUNTY ENGINEER.
  - ALL JOINTS BETWEEN CAST IRON PIPE AND VITRIFIED CLAY PIPE SHALL BE MADE WITH A RUBBER SLEEVE JOINT, TYPE "C" OR "B", (WITH BUSHING IF NECESSARY) PER STANDARD SPECIFICATIONS, SECTION 306-2.
  - SEWERS TO BE TESTED FOR LEAKAGE PER SECTION 306-1.6 OF THE STANDARD SPECIFICATIONS AND SPECIAL PROVISIONS.
  - RESURFACE ALL THROTTLES WITHIN PAVED AREAS TO MEET L.A. COUNTY ROAD DEPT. OR CALIFORNIA STATE HIGHWAY REQUIREMENTS IN ACCORDANCE WITH PERMITS.
  - FULL COMPLIANCE WITH SECTION 306-1.8.B OF THE SPECIAL PROVISIONS WILL BE REQUIRED FOR BACKFILL IN STREETS. CERTIFICATION OF BACKFILL COMPACTION AND SAND EQUIVALENTS BY A QUALIFIED, REGISTERED TESTING LABORATORY SHALL BE PROVIDED BY THE PERMITTEE PRIOR TO THE ISSUANCE OF A CERTIFICATE OF PARTIAL ACCEPTANCE.
- NO CONNECTION FOR THE DISPOSAL OF INDUSTRIAL WASTES SHALL BE MADE TO SEWERS SHOWN ON THESE DRAWINGS UNTIL A PERMIT FOR INDUSTRIAL WASTE WATER DISCHARGE HAS BEEN ISSUED BY THE SANITATION DISTRICTS FOR SAID CONNECTION.

PROFILE, ALIGNMENT AND GRADE OF  
 SANITARY SEWERS PAGE 1

CONSTRUCTED IN  
 TRACT No. 26151  
 PRIVATE CONTRACT NO. 9186

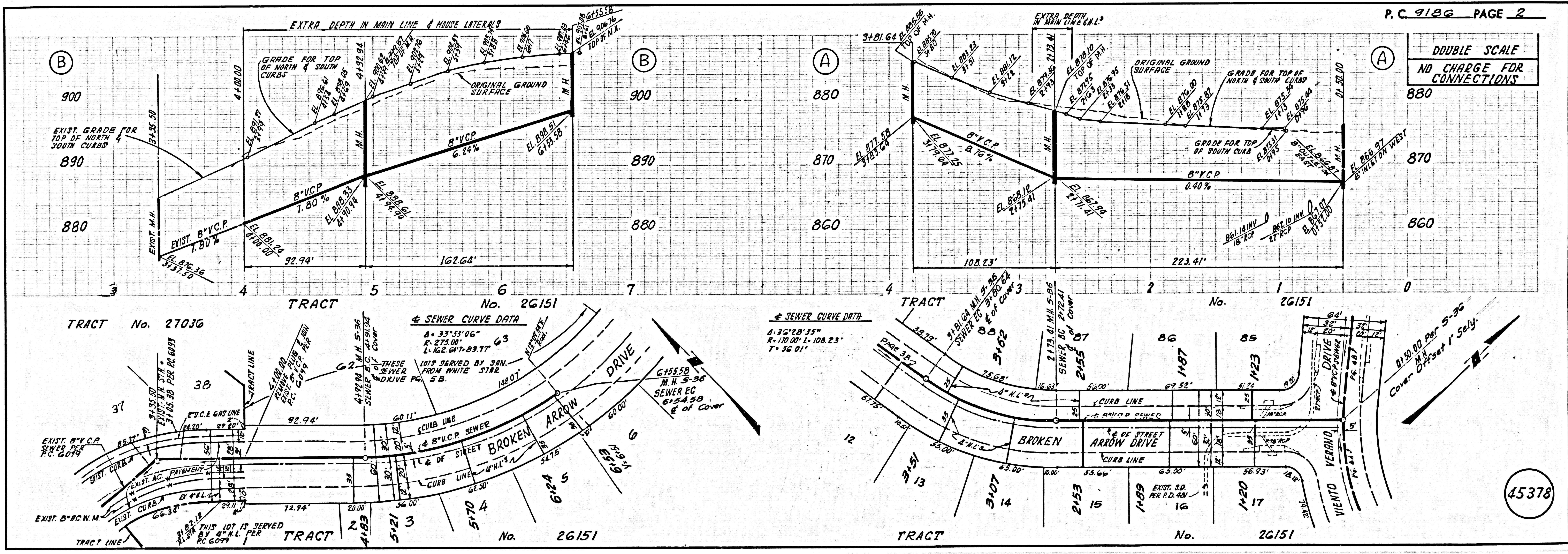
W.S. 39-84  
 3 SHEETS, 6 PAGES  
 SCALE: VERT. 1" = 4'  
 HORIZ. 1" = 40'  
 JUNE, 1975  
 PREPARED IN THE OFFICES OF  
 ERVIN ENGINEERING  
 729 So. PARK VIEW ST. LOS ANGELES, CALIF.  
 BY: Fred J. Ervin  
 REG. C. E. No. 11332

THE FOLLOWING LATEST REVISED STANDARD PLANS ON FILE IN THE OFFICE OF THE COUNTY ENGINEER SHALL APPLY IN THE CONSTRUCTION OF THIS PROJECT:

LEGEND	5-1
MINIMUM PUBLIC SAFETY REQUIREMENTS	5-2
BRICK MANHOLE	5-3
STANDARD MANHOLE STEP	5-17
BEDDING FOR SEWER PIPE	5-20
CLADDING AND ENCASUREMENT	5-28
WYE OR TEE SUPPORT	5-36
ALLOWABLE TRENCH WIDTHS	5-38
LOCKING MANHOLE FRAME AND COVER	5-39
NON-REINFORCED PRECAST CONCRETE MANHOLE	5-36

COUNTY OF LOS ANGELES, CALIFORNIA  
 HARVEY T. BRANDT, COUNTY ENGINEER JOHN D. PARKHURST, CHIEF ENGINEER  
 APPROVED: *BTJ* REGIONAL ENGINEER APPROVED: *John D. Parkhurst* ASST. COUNTY ENGINEER  
 CHECKED: *Louisa E. Howard* DATE: 13 June 75  
 REG. C.E. NO. 12156  
 SAN DIMAS BLDG. DIST. 10 I.N. 0290.02

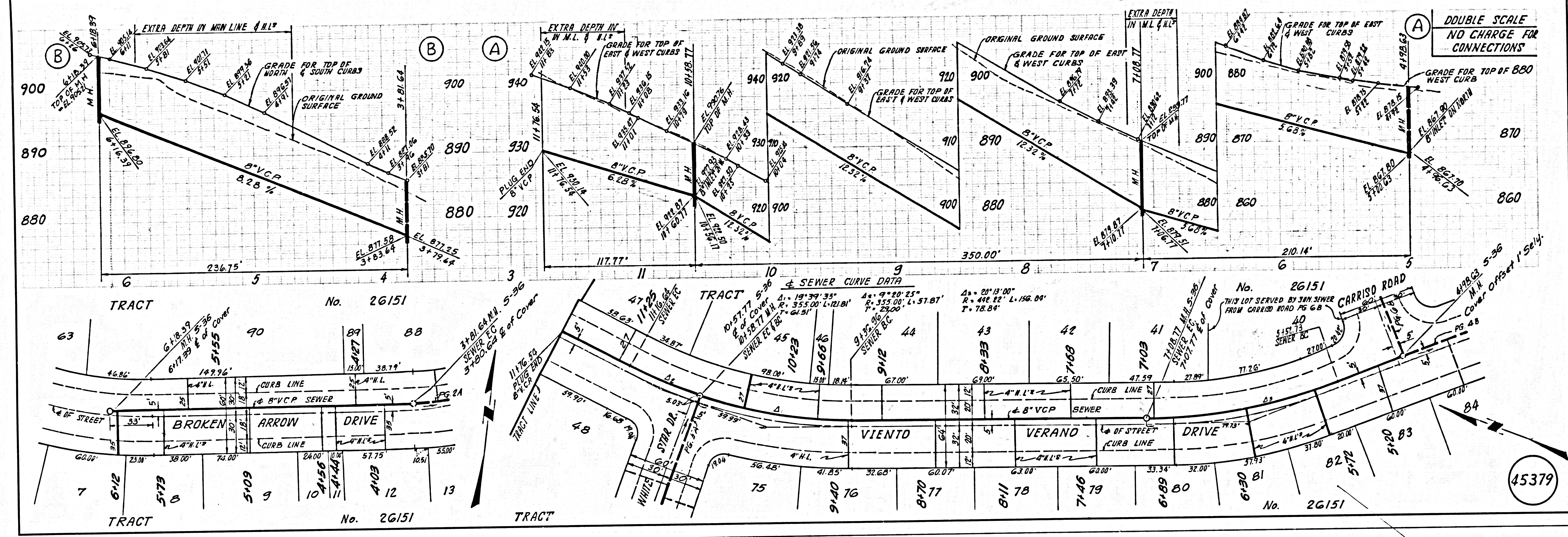
45377



P.C. 9186 PAGE 2

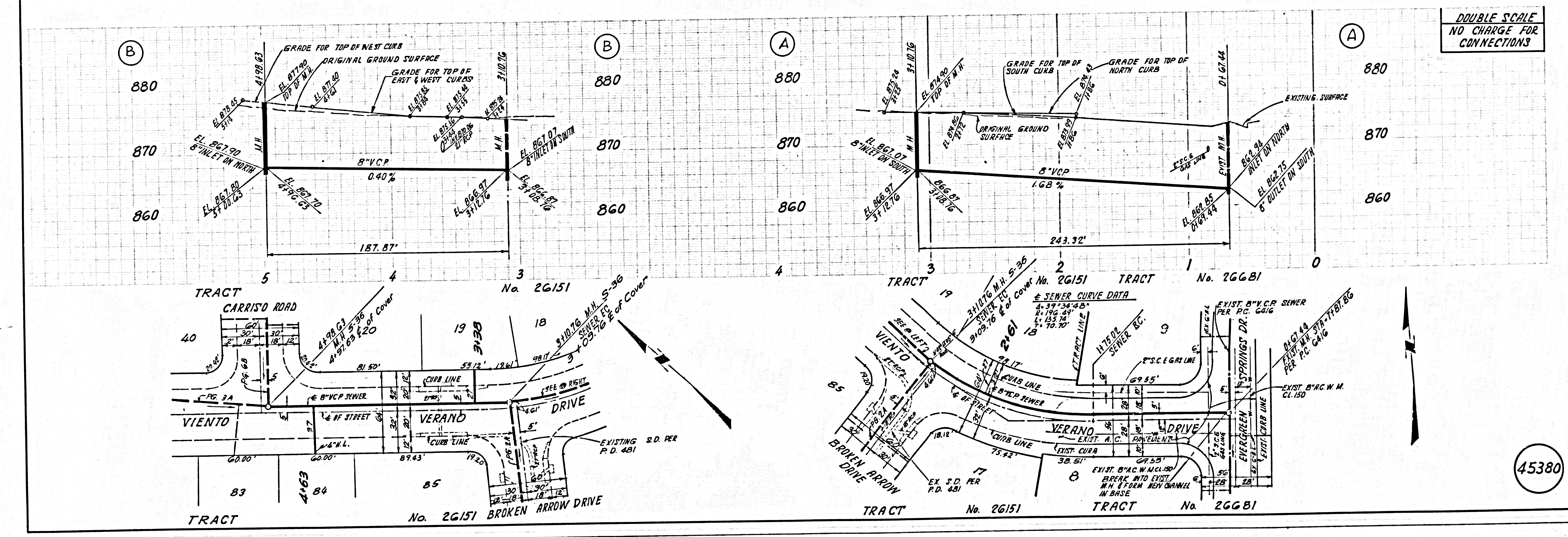
DOUBLE SCALE  
 NO CHARGE FOR CONNECTIONS

45378



DOUBLE SCALE  
NO CHARGE FOR  
CONNECTIONS

45379



DOUBLE SCALE  
NO CHARGE FOR  
CONNECTIONS

45380

