

B.M. B.G. 2109 ELEV. 843.522
 RDBM TAG IN CTR CONC HDWL 60 FT
 E OF & DIAMOND BAR BLVD & 792 FT
 NLY MAPLE HILL RD.
 OTTERBEIN QUAD. 1970 ADJ.

REVISION NO. 1 OCT. 20 1976
 ADD MANHOLE AT STA. 2+41.76
 ON PAGE NO. 8
Thomas E. Howard
 APPROVED: OFFICE OF COUNTY ENGINEER
 23 OCT 76

PRIVATE ENGINEERS NOTICE TO CONTRACTORS
 THE EXISTENCE AND APPROXIMATE LOCATION OF UNDERGROUND UTILITIES OR STRUCTURES SHOWN ON THESE PLANS WERE DETERMINED BY A SEARCH OF AVAILABLE PUBLIC RECORDS. TO THE BEST OF OUR KNOWLEDGE THERE ARE NO EXISTING UNDERGROUND UTILITIES OR STRUCTURES EXCEPT AS SHOWN.
 THE CONTRACTOR IS REQUIRED TO TAKE DUE PRECAUTIONARY MEASURES TO PROTECT THE UTILITIES OR STRUCTURES SHOWN AND ANY OTHER UTILITIES OR STRUCTURES NOT OF RECORD OR NOT SHOWN ON THESE PLANS.
Robert R. Flores
 ROBERT R. FLORES R.C.E. NO. 13439

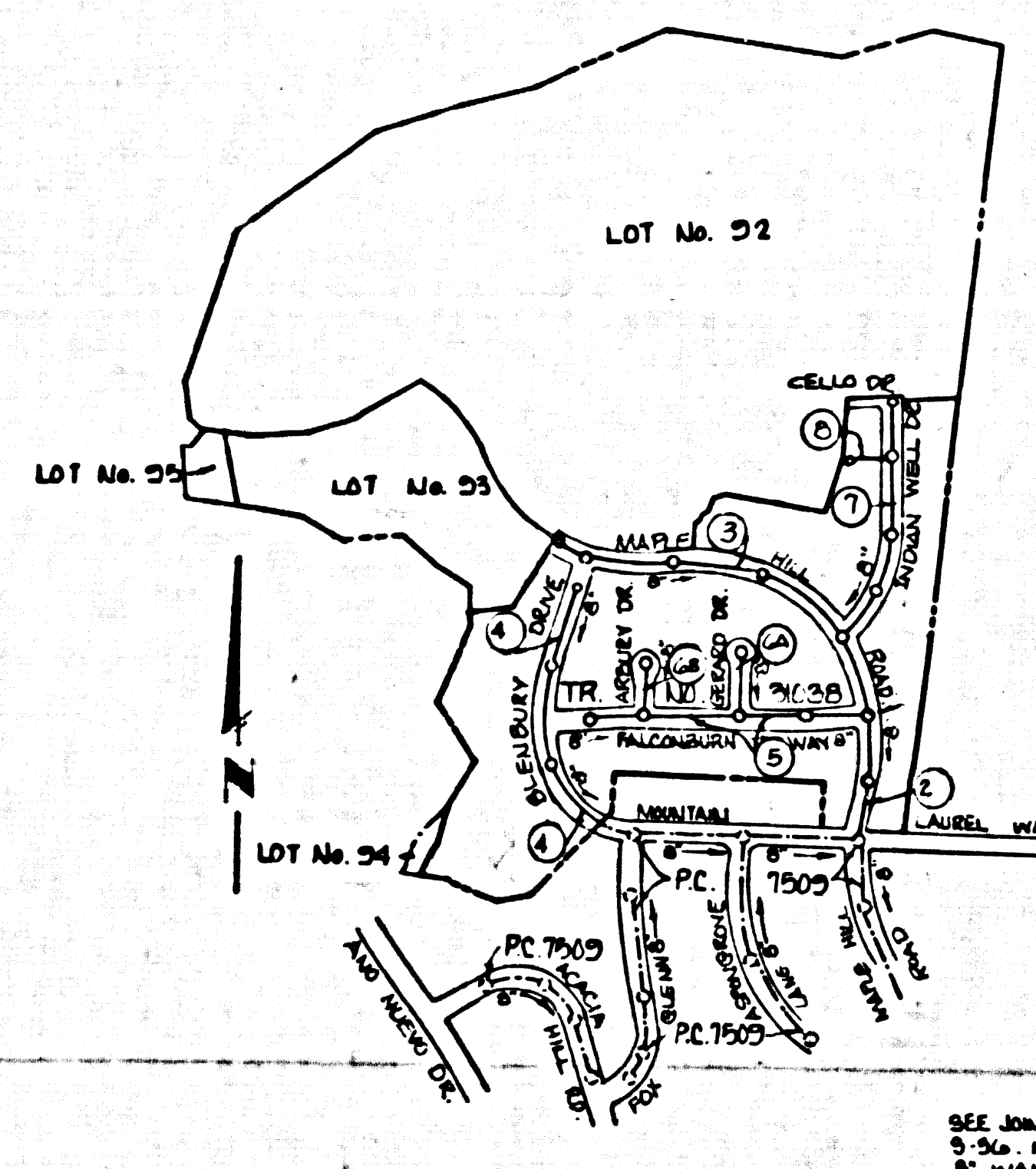
DOUBLE SCALE

PROFILE, ALIGNMENT AND GRADE OF
SANITARY SEWERS PAGE 1

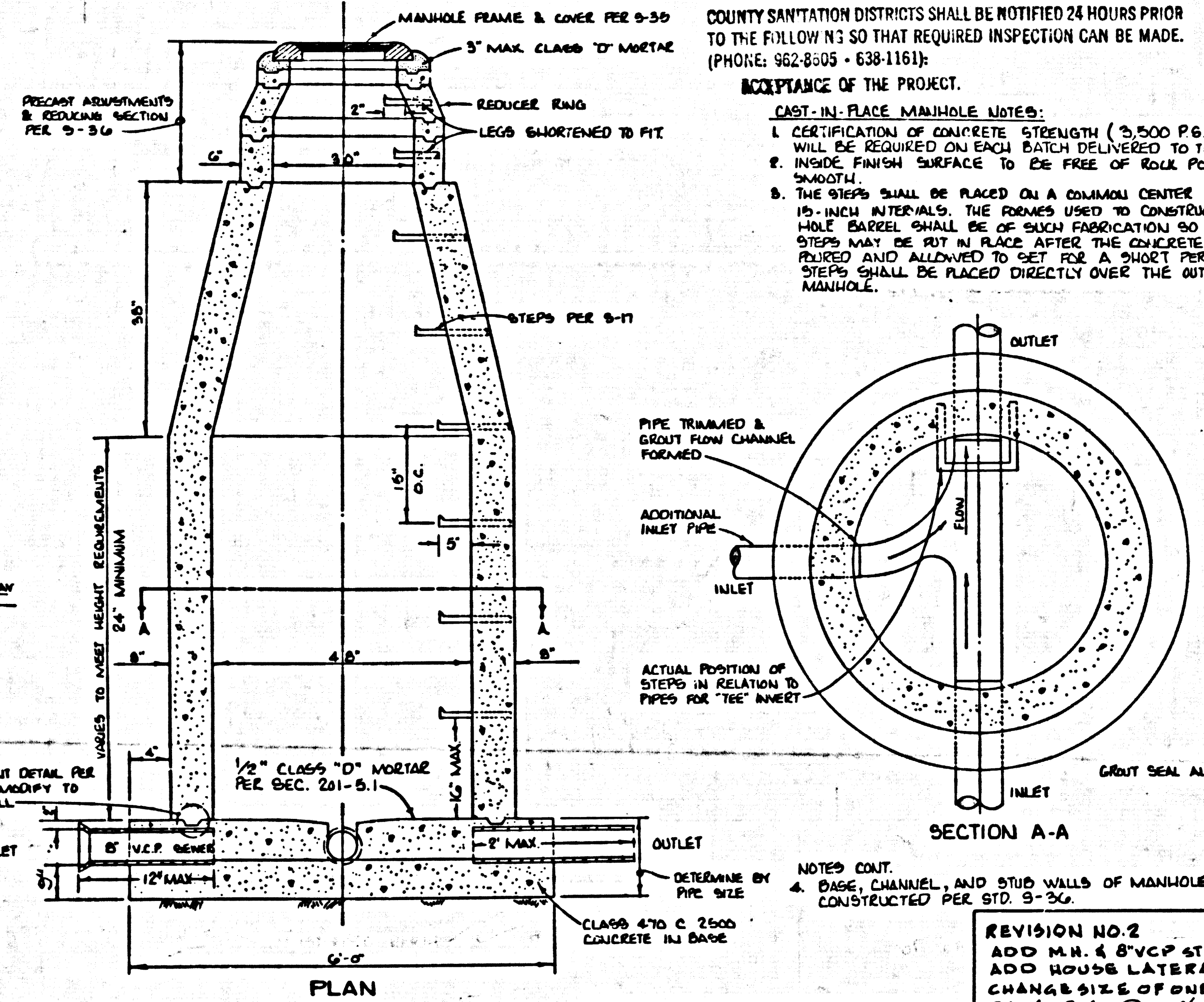
CONSTRUCTED IN
TRACT NO. 31038

PRIVATE CONTRACT NO. 9213

W.S. 35-C-4
 4 SHEETS, 0 PAGES
 45,728
 SCALE: VERT. 1"=5' HORIZ. 1"=50'
 OCTOBER, 1975
 PREPARED IN THE OFFICES OF
KEMMERER ENGINEERING CO. INC.
 6705 S. PAINTER AVE. WHITTIER, CAL.
 BY: *Robert R. Flores* (213) 699-0719
 REG. C. E. No. 11349



INDEX MAP
 TRACT NO. 31038
 P.C. 9213
 SCALE: 1"=600'
 NOTE: NUMBERS IN CIRCLES INDICATE PAGE NUMBER



CAST-IN-PLACE MANHOLES
 LOT TO SCALE

REVISION NO. 2 NOV. 23 1976
 ADD M.H. & 8" V.C.P. ENCLOSURE
 ADD HOUSE LATERALS (S)
 CHANGE SIZES & OF CURB H.L. TO 4"
 PAGE 3 (M.D. 76/13/19/20)
Thomas E. Howard
 APPROVED: OFFICE OF COUNTY ENGINEER
 23 NOV 76

- GENERAL NOTES:**
- ELEVATIONS ARE IN FEET ABOVE U.S.C. & G.S. SEA LEVEL DATUM OF 1929.
 - NO REVISIONS SHALL BE MADE IN THESE PLANS WITHOUT THE APPROVAL OF THE COUNTY ENGINEER.
 - NO REPRESENTATIVE OF THE COUNTY ENGINEER WILL SURVEY OR LAY OUT ANY PORTION OF THE WORK.
 - GRADES TO WHICH THIS IMPROVEMENT IS TO BE CONSTRUCTED ARE SHOWN ON PLANS AND PROFILES. GRADE POINTS FOR TOP OF CURB, CENTER LINE OF STREETS, OR CENTER LINE OF ALLEYS ARE SHOWN BY CIRCLES ON PROFILES. AT ALL POINTS BETWEEN DESIGNATED POINTS THE GRADES SHALL BE ESTABLISHED SO AS TO CONFORM TO A STRAIGHT LINE DRAWN BETWEEN SAID DESIGNATED POINTS.
 - THE PRIVATE ENGINEER SHALL FURNISH THE COUNTY ENGINEER WITH GRADE SHEETS AND STATIONING FOR ALL HOUSE LATERALS AND "T" OR "Y" BRANCHES AND SHALL PROVIDE STAKES FOR THEM AT THEIR PROPER LOCATIONS WITH STATIONING PLAINLY MARKED. ALL HOUSE LATERALS SHALL BE CONSTRUCTED IN A STRAIGHT ALIGNMENT AT RIGHT ANGLES FROM THE MAIN LINE SEWER EXCEPT AS SHOWN ON THE PLANS. HOUSE LATERALS FROM CHIMNEYS SHALL NOT HAVE AN ANGLE OF LESS THAN 45° WITH THE MAIN LINE SEWER. ANY CHANGE IN ALIGNMENT SHALL BE REQUESTED IN WRITING BY THE PRIVATE ENGINEER.
 - THE PRIVATE ENGINEER SHALL FURNISH THE HOUSE LATERAL DEPTH AT THE PROPERTY LINE BELOW THE TOP OF CURB ELEVATION FOR EACH HOUSE LATERAL ON THE GRADE SHEET.
 - BEFORE WORK CAN BE STARTED, THE CONTRACTOR MUST OBTAIN A PERMIT TO EXCAVATE IN COUNTY STREETS FROM THE L.A. COUNTY ROAD DEPT., DISTRICT OFFICE NO. 1, AND PAY A FEE TO THE COUNTY ENGINEER, 521 E. BONAVILLE AVE., 2ND FLOOR, REGIONAL OFFICE, TO COVER THE COST OF CONSTRUCTION INSPECTION AND RECORD PLANS.
 - IF WORK IS TO BE DONE IN A STATE HIGHWAY, A PERMIT MUST BE OBTAINED FROM THE STATE OF CALIFORNIA, DIVISION OF HIGHWAYS, 138 SOUTH SPRING STREET, LOS ANGELES, CALIFORNIA.
 - APPROVAL OF THIS PLAN BY THE COUNTY OF LOS ANGELES DOES NOT CONSTITUTE A REPRESENTATION AS TO THE ACCURACY OF THE LOCATION OF OR THE EXISTENCE OR NON-EXISTENCE OF ANY UNDERGROUND UTILITY PIPE, OR STRUCTURE WITHIN THE LIMITS OF THIS PROJECT. THE NOTE APPLIES TO ALL PAGES.
 - REFER TO SECTION 7-18.4.1 OF THE STANDARD SPECIFICATIONS, REGARDING SAFETY ORDERS.
 - BEFORE THE COMMENCEMENT OF THE REQUIRED SEWER CONSTRUCTION PERMIT BY THE COUNTY ENGINEER, THE CONTRACTOR SHALL OBTAIN A PERMIT TO EXCAVATE FROM THE STATE OF CALIFORNIA, DIVISION OF INDUSTRIAL SAFETY.
 - (7+50) INDICATES HOUSE LATERALS MUST NOT BE CONSTRUCTED UPSTREAM OF THIS STATION.

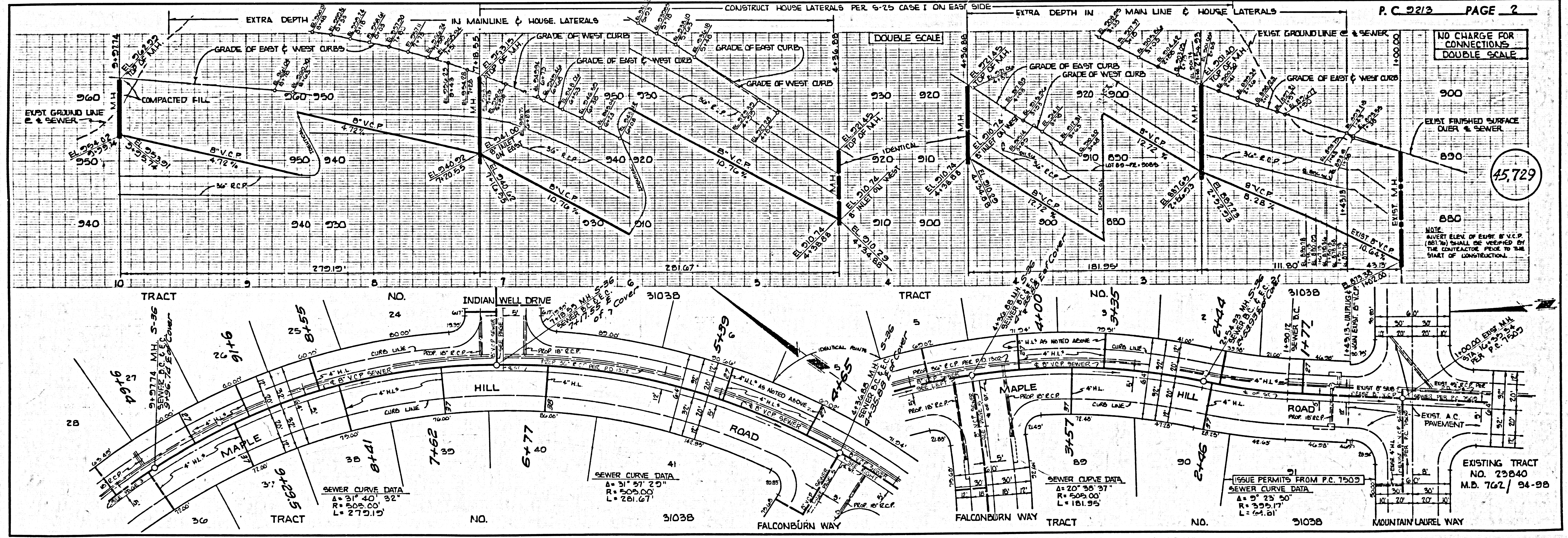
NO CONNECTION FOR THE DISPOSAL OF INDUSTRIAL WASTES SHALL BE MADE TO SEWERS SHOWN ON THESE DRAWINGS UNTIL A PERMIT FOR INDUSTRIAL WASTE WATER DISCHARGE HAS BEEN ISSUED BY THE SANITATION DISTRICTS FOR SAID CONNECTION.

- CONSTRUCTION NOTES:**
- WORK SHALL BE CONSTRUCTED ACCORDING TO THE STANDARD SPECIFICATIONS FOR PUBLIC WORKS CONSTRUCTION 1973 EDITION WITH 1974 & 75 SUPPLEMENTS AND COUNTY ENGINEER SPECIAL PROVISIONS FOR THE CONSTRUCTION OF SANITARY SEWERS DATED 08/28/74. ALL WORK SHALL BE PROSECUTED ONLY IN THE PRESENCE OF THE COUNTY ENGINEER.
 - THE CONTRACTOR SHALL NOTIFY THE DESIGN DIVISION BY TELEPHONE, (213) 574-7825, AT LEAST TWENTY-FOUR HOURS BEFORE STARTING ANY WORK UNDER THIS CONTRACT.
 - HOUSE LATERALS TO BE CONSTRUCTED WITH INVERTS AT PROPERTY LINE 6 FEET BELOW CURB GRADE EXCEPT AS NOTED.
 - WYE OR TEE BRANCHES MAY BE USED FOR CONNECTIONS TO MAINLINE SEWERS EXCEPT AS NOTED.
 - ALL STRUCTURES SHALL BE EITHER BRICK MANHOLES PER 5-30, OR CAST-IN-PLACE MANHOLES PER 5-30, AND SHALL BE CONSTRUCTED ONLY IN THE PRESENCE OF THE COUNTY ENGINEER.
 - PROVIDE STAKES ON THE PROPERTY LINE OR PROPERTY LINES PRODUCED AT RIGHT ANGLES TO THE SEWER LINE AT THE CENTERLINE OF EACH MANHOLE.
 - MANHOLE TOPS IN UNIMPROVED RIGHTS OF WAY TO BE SIX INCHES ABOVE FINISHED GRADE.
 - VITRIFIED CLAY PIPE JOINTS SHALL BE TYPE "B", "T", OR "G" PER STANDARD SPECIFICATIONS SECTION 308-2.
 - IF A POWER POLE IS WITHIN THREE FEET OF THE SEWER, THE SEWER SHALL BE ENCASED, PER 5-23, CASE II, TWO FEET ON EACH SIDE FROM THE POINT OF INTERFERENCE.
 - IF DURING THE COURSE OF CONSTRUCTION IT IS DETERMINED THAT THERE IS LESS THAN FOUR FEET OF COVER OVER THE TOP OF A MAIN LINE OR HOUSE LATERAL V.C.P. SEWER WHICH IS NOT INDICATED ON THE PLANS, THE PIPE SHALL BE COVERED PER 5-23, CASE II UNLESS OTHERWISE APPROVED BY THE COUNTY ENGINEER.
 - ALL JOINTS BETWEEN CAST IRON PIPE AND VITRIFIED CLAY PIPE SHALL BE MADE WITH A RUBBER SLEEVE JOINT, TYPE "C" OR "B", WITH BUSHING IF NECESSARY PER STANDARD SPECIFICATIONS, SECTION 308-2.
 - SEWERS TO BE TESTED FOR LEAKAGE PER SECTION 306-1.6 OF THE STANDARD SPECIFICATIONS AND SPECIAL PROVISIONS.
 - RESURFACE ALL TRENCHES WITHIN PAVED AREAS TO MEET L.A. COUNTY ROAD DEPT. OF CALIFORNIA STATE HIGHWAY REQUIREMENTS IN ACCORDANCE WITH PERMITS.
 - FULL COMPLIANCE WITH SECTION 306-1.5.5 OF THE SPECIAL PROVISIONS WILL BE REQUIRED FOR BACTERIAL IN STRAIGHT CERTIFICATION OF BACTERIAL COMPLETION AND SAID CERTIFICATION BY A QUALIFIED, REGISTERED TESTING LABORATORY SHALL BE PROVIDED BY THE PERMITTEE PRIOR TO THE ISSUANCE OF A CERTIFICATE OF PARTIAL ACCEPTANCE.
 - SPECIAL CAREFUL IN DESIGNATED AREAS:
 (A) BODILY TRENCH AND REPLACE THREE INCHES BELOW TO 24 INCHES ABOVE THE USUAL OR UNIMPROVED GRADES AND SUPPORTS SHOWN ON THE ORIGINAL PLAN, APPROVED FOR 12 INCH TRENCH BY THE REGIONAL AND SAFETY DIVISION.
 (B) ALL EARTH AND REINFORCEMENT SHALL BE CONSTRUCTED TO A MINIMUM OF 80% OF MAXIMUM DENSITY. ALL SPECIAL ACCEPTABLE METHOD OF TESTING, 2000-517 AS MODIFIED, ACCEPTABLE CERTIFICATIONS OF SOIL COMPLETION SHALL BE SUBMITTED TO THE DESIGN DIVISION.

THE FOLLOWING LATEST STANDARD PLANS ON FILE IN THE OFFICE OF THE COUNTY ENGINEER SHALL APPLY IN THE CONSTRUCTION OF THIS PROJECT.

| | |
|---|------|
| LEGEND | 5-1 |
| MINIMUM PUBLIC SAFETY REQUIREMENTS | 5-2 |
| BRICK MANHOLE | 5-3 |
| STANDARD MANHOLE STEP | 5-7 |
| BEDDING FOR SEWER PIPE | 5-21 |
| CRADLING AND ENCASUREMENT | 5-28 |
| WYE OR TEE SUPPORT | 5-30 |
| ALLOWABLE TRENCH WIDTHS | 5-31 |
| LOADING MANHOLE FRAME AND COVER | 5-32 |
| NON-REINFORCED PRECAST CONCRETE MANHOLE | 5-34 |

COUNTY OF LOS ANGELES, CALIFORNIA
 DEPARTMENT OF COUNTY ENGINEER
 APPROVED: *B.T. Worling* REGIONAL ENGINEER
 APPROVED: *Thomas E. Howard* OFFICE ENGINEER
 JOHN D. PARKHURST, CHIEF ENGINEER
 CO. SAN. DIST. NO. 7
 CHECKED: *Thomas E. Howard* DATE: 11 Nov 76
 REG. C.E. NO. 19136
 GAIL DIMAR BLDG. DIST. 10 J. N. 0250.02



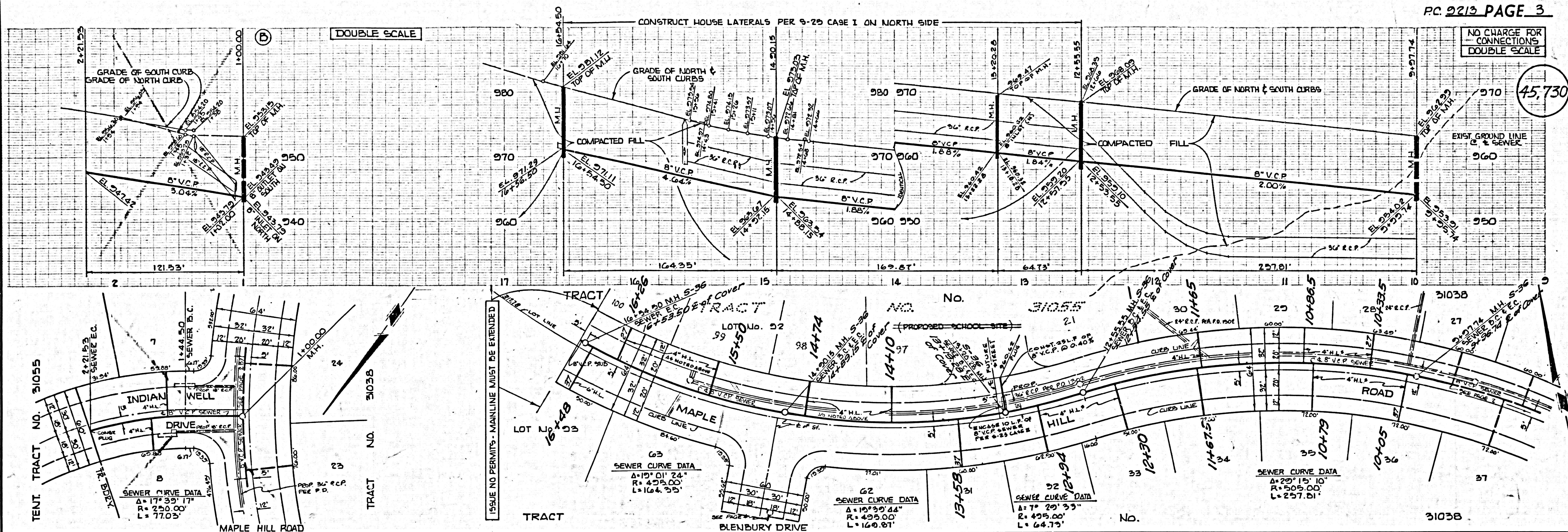
NO CHARGE FOR CONNECTIONS
 DOUBLE SCALE

45,729

EXISTING TRACT NO. 23840
 M.D. 762/94-98

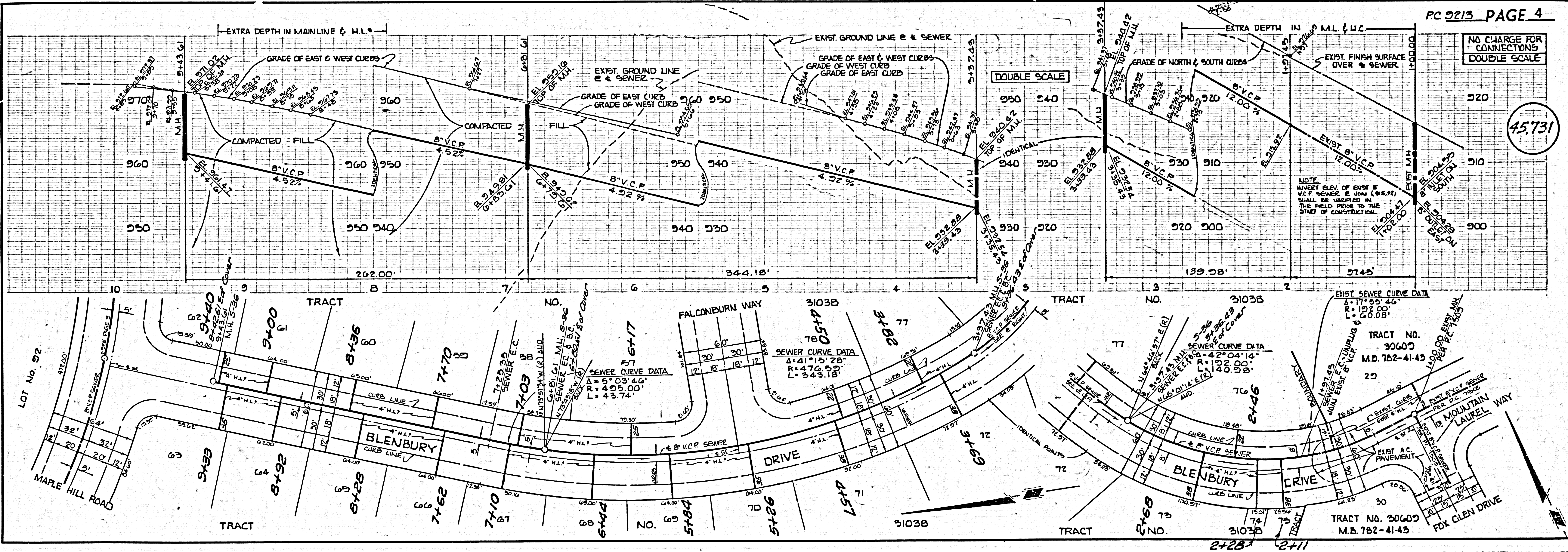
NO CHARGE FOR CONNECTIONS DOUBLE SCALE

45,730



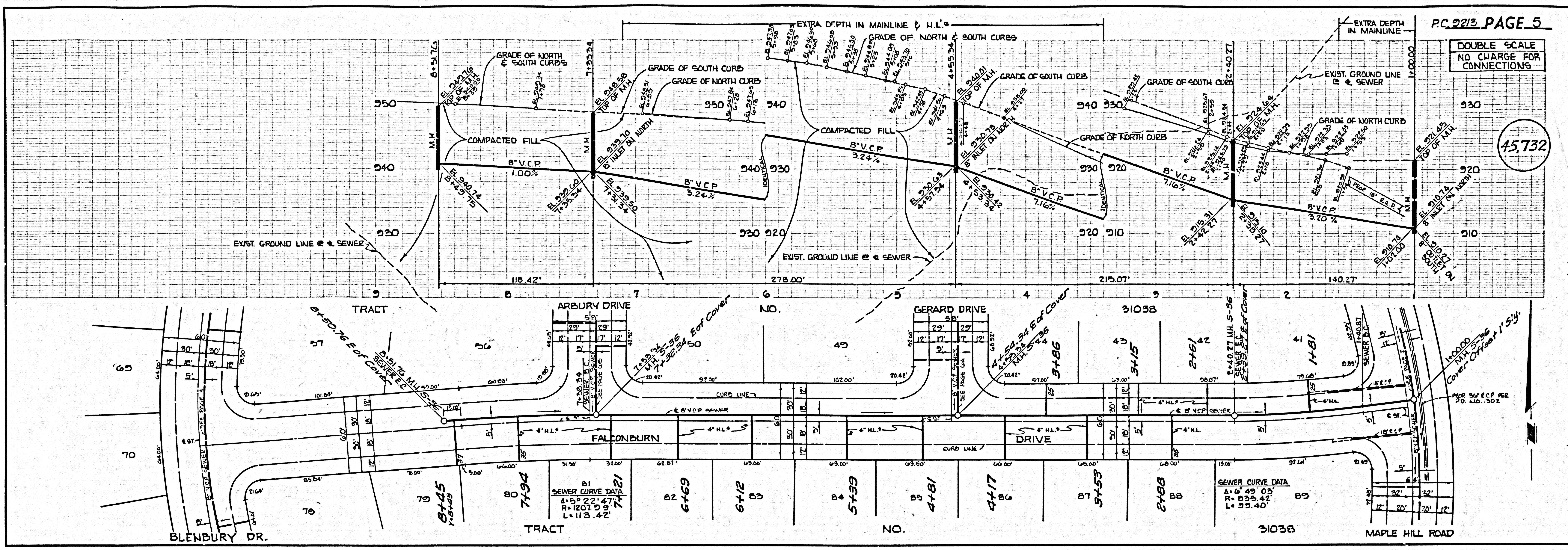
NO CHARGE FOR CONNECTIONS DOUBLE SCALE

45,731



DOUBLE SCALE
NO CHARGE FOR
CONNECTIONS

15,732



DOUBLE SCALE
NO CHARGE FOR
CONNECTIONS
DOUBLE SCALE

15,733

