

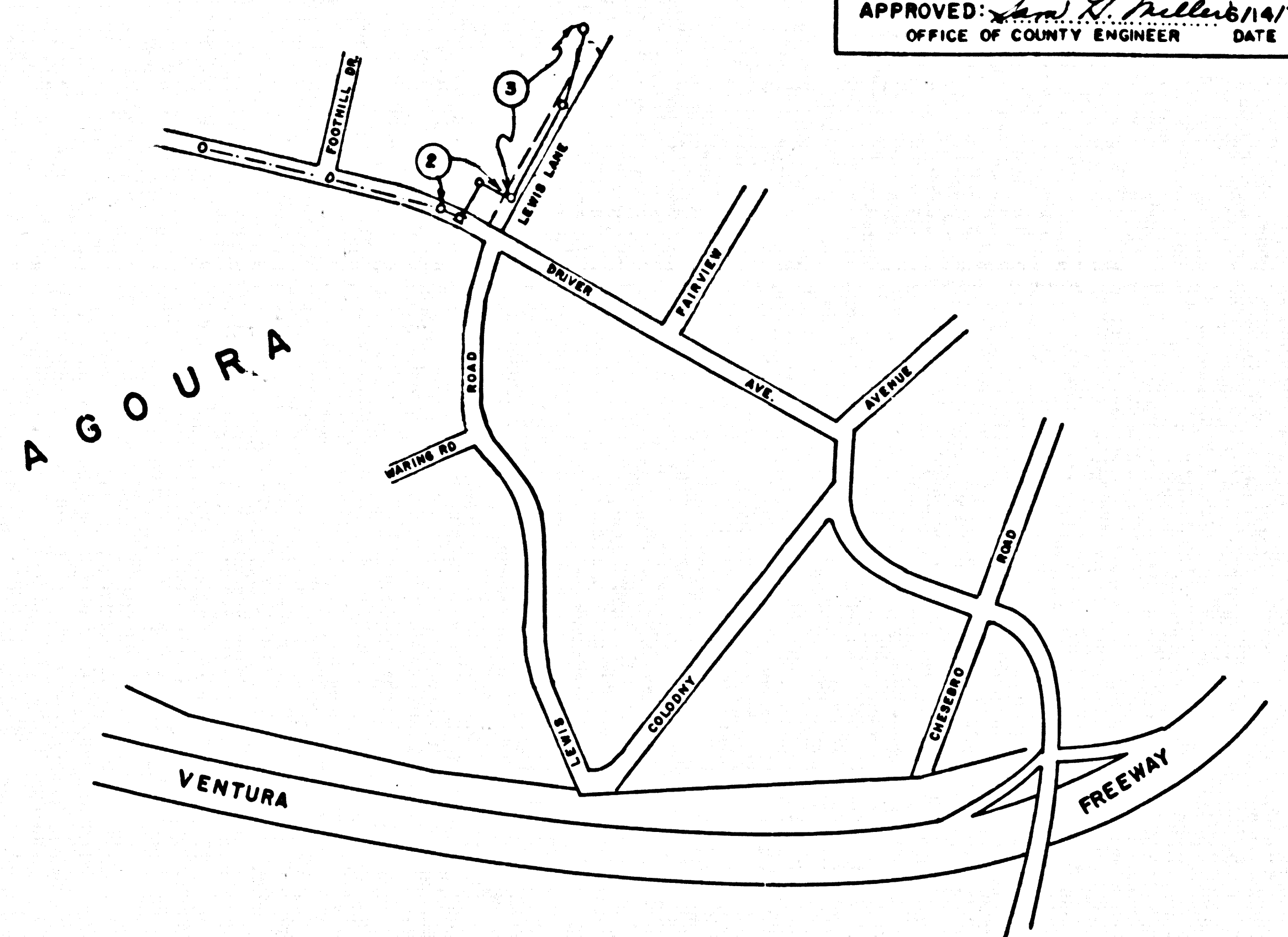
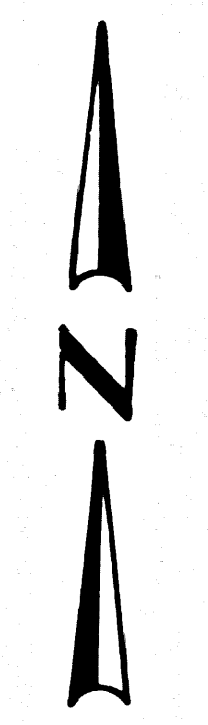
B.M. M.F. 38 ELEV. 926.779  
 DRIVER AVE. & LEWIS ROAD, SE COR.  
 THIS "X" IN MOST NE'LY BOLT IN THE  
 LOWER FIRE HYD. F.L.G. 54 E & 28 S E  
 MALIBU QUAD. 1971.

REVISION No. 1.  
 CHANGED ALIGNMENT AND CONTINUED  
 GRADE FROM STATION 24+50 TO STA-  
 TION 28+30.26. ALSO CHANGED LET-  
 TER OF PARTICIPATION.  
 APPROVED: *Sam H. Miller* 5/14/76  
 OFFICE OF COUNTY ENGINEER DATE

PROFILE, ALIGNMENT AND GRADE OF  
**SANITARY SEWERS** PAGE 1  
 TO BE CONSTRUCTED IN  
**LEWIS LANE (PVT. ST.)**  
 PRIVATE CONTRACT NO. 9228

W.S. 90  
 2 SHEETS, 3 PAGES  
 SCALE: VERT. 1"=6' HORIZ. 1"=40'  
 FEB. 18, 1976  
 PREPARED IN THE OFFICES OF  
 HARMON RASNOW & ASSOC.  
 BY: *Boyd Beaton*  
 REG. C.E. No. 18879

45479



NOTE: NUMBERS IN CIRCLES  
 INDICATE PAGE No'S

INDEX MAP - PC 9228  
 SCALE 1"=500'

**GENERAL NOTES:**

1. REVISIONS ARE BY PER APPROV. E.C. & S.E. SEA LEVEL DATUM OF 1929.
2. NO REVISIONS SHALL BE MADE IN THESE PLANS WITHOUT THE APPROVAL OF THE COUNTY ENGINEER.
3. NO REPRESENTATIVE OF THE COUNTY ENGINEER WILL SURVEY OR LAY OUT ANY PORTION OF THE WORK.
4. GRADES TO WHICH THIS IMPROVEMENT IS TO BE CONSTRUCTED ARE SHOWN ON PLANS AND PROFILES. GRADE POINTS FOR TOP OF CURBS, CENTER LINE OF STREETS, OR CENTER LINE OF ALLEYS ARE SHOWN BY CIRCLES ON PROFILES. AT ALL POINTS BETWEEN DESIGNATED POINTS THE GRADE SHALL BE ESTABLISHED SO AS TO CONFORM TO A STRAIGHT LINE BETWEEN SAID DESIGNATED POINTS.
5. THE PRIVATE ENGINEER SHALL FURNISH THE COUNTY ENGINEER WITH GRADE SHEETS AND STATIONING FOR ALL HOUSE LATERALS AND 12" OR 16" BRANCHES AND SHALL PROVIDE STAKES FOR THEM AT THEIR PROPER LOCATIONS WITH STATIONING PLAINLY MARKED. ALL HOUSE LATERALS SHALL BE CONSTRUCTED IN A STRAIGHT ALIGNMENT AT RIGHT ANGLES FROM THE MAIN LINE SEWER EXCEPT AS SHOWN ON THE PLANS. HOUSE LATERALS FROM CHIMNEYS SHALL NOT HAVE AN ANGLE OF LESS THAN 45° WITH THE MAIN LINE SEWER. ANY CHANGE IN ALIGNMENT SHALL BE REQUESTED IN WRITING BY THE PRIVATE ENGINEER.
6. THE PRIVATE ENGINEER SHALL FURNISH THE HOUSE LATERAL DEPTH AT THE PROPERTY LINE BELOW THE GROUND ELEVATION FOR EACH HOUSE LATERAL ON THE GRADE SHEET.
7. BEFORE WORK CAN BE STARTED, THE CONTRACTOR MUST OBTAIN A PERMIT TO EXCAVATE IN COUNTY STREETS FROM THE L.A. COUNTY ROAD DEPT., DISTRICT OFFICE NO. 1, AND PAY A FEE TO THE COUNTY ENGINEER, AT THE BALBUENA DISTRICT REGIONAL OFFICE, TO COVER THE COST OF CONSTRUCTION INSPECTION AND RECORD PLANS.
8. IF WORK IS TO BE DONE IN A STATE HIGHWAY, A PERMIT MUST BE OBTAINED FROM THE STATE OF CALIFORNIA, DIVISION OF HIGHWAYS, 130 SOUTH BRIDGE STREET, LOS ANGELES, CALIFORNIA.
9. APPROVAL OF THIS PLAN BY THE COUNTY OF LOS ANGELES DOES NOT CONSTITUTE A REPRESENTATION AS TO THE ACCURACY OF THE LOCATION OF OR THE EXISTENCE OR NON-EXISTENCE OF ANY UNDERGROUND UTILITY PIPE, OR STRUCTURE WITHIN THE LIMITS OF THIS PROJECT. THIS NOTE APPLIES TO ALL PAGES.
10. REFER TO SECTION 710.1.1 OF THE STANDARD SPECIFICATIONS, REGARDING SAFETY ORDERS.
11. PRIOR TO ISSUANCE OF THE REQUIRED SEWER CONSTRUCTION PERMIT BY THE COUNTY ENGINEER, THE CONTRACTOR SHALL OBTAIN A PERMIT TO EXCAVATE FROM THE STATE OF CALIF. D. I. S.
12. THE UNDERGROUND UTILITIES GO. WITHIN THE PROJECT LIMITS ARE:  
 A. L.A. VIEWER'S MUNICIPAL WATER DISTRICT  
 B. SOUTHERN CALIFORNIA GAS CO.  
 C. SOUTHERN CALIFORNIA EDISON

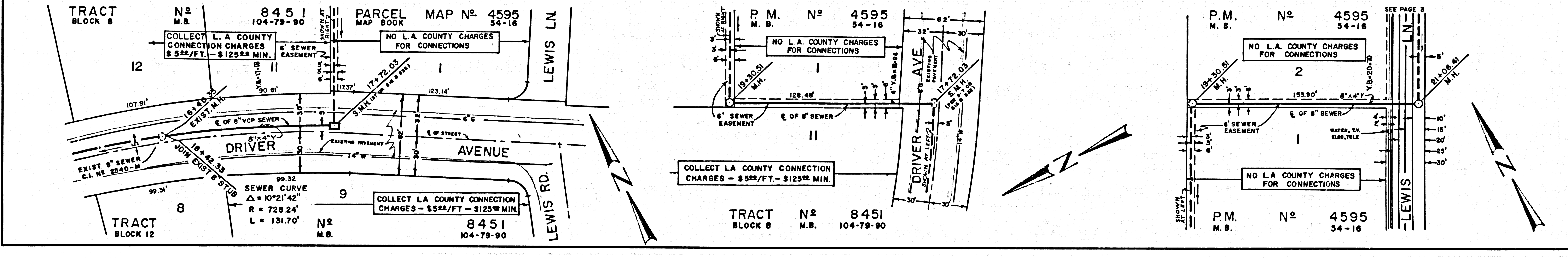
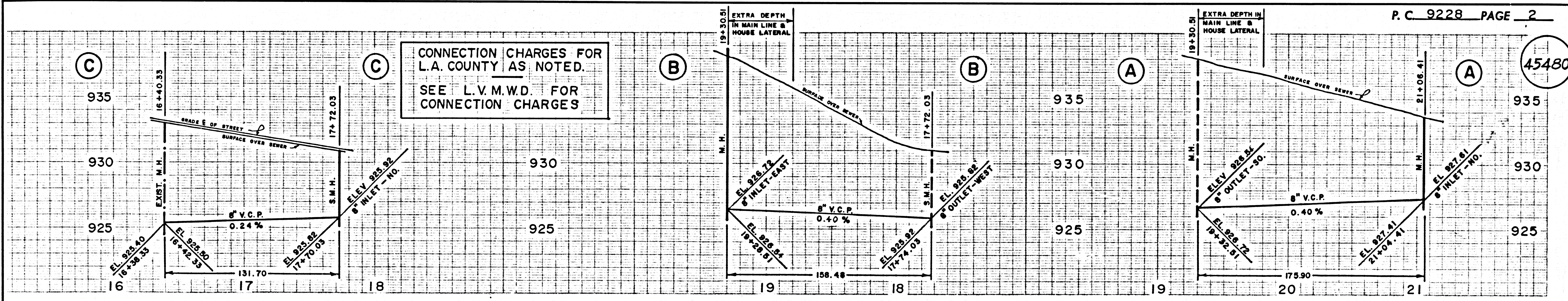
**CONSTRUCTION NOTES:**

1. WORK SHALL BE CONSTRUCTED ACCORDING TO THE STANDARD SPECIFICATIONS FOR PUBLIC WORKS CONSTRUCTION 1976 EDITION WITH "B.I.T." SUPPLEMENTS AND COUNTY ENGINEER SPECIAL PROVISIONS FOR THE CONSTRUCTION OF SANITARY SEWERS DATED 11/15/75 AND SHALL BE PROSECUTED ONLY IN THE PRESENCE OF THE COUNTY ENGINEER.
2. THE CONTRACTOR SHALL NOTIFY THE S.E.W.E.R. DIVISION BY TELEPHONE, (818) 974-7233, AT LEAST TWENTY-FOUR HOURS BEFORE STARTING ANY WORK UNDER THIS CONTRACT.
3. HOUSE LATERALS TO BE CONSTRUCTED WITH INVERTS AT PROPERTY LINE & FEET BELOW GROUND SURFACE EXCEPT AS NOTED.
4. WYE OR TEE SUPPORTS SHALL BE USED FOR CONNECTIONS TO MAINLINE SEWERS EXCEPT AS NOTED.
5. ALL STRUCTURES SHALL BE EITHER BRICK MANHOLES PER S-3 OR PRECAST CONCRETE MANHOLES PER S-3A, EXCEPT AS NOTED.
6. PROVIDE STAKES ON THE PROPERTY LINE OR PROPERTY LINES PRODUCED AT RIGHT ANGLES TO THE SEWER LINE AT THE CENTER LINE OF EACH MANHOLE.
7. MANHOLE TOPS IN IMPROVED RIGHTS OF WAY TO BE LEVEL WITH FINISHED GRADE.
8. VITRIFIED CLAY PIPE JOINTS SHALL BE TYPE "B", "C", OR "D" PER STANDARD SPECIFICATIONS SECTION 306.2.
9. IF A POWER POLE IS WITHIN THREE FEET OF THE SEWER, THE SEWER SHALL BE ENCASED PER S-23, CASE II, TWO FEET ON EACH SIDE FROM THE POINT OF INTERFERENCE.
10. IF DURING THE COURSE OF CONSTRUCTION IT IS DETERMINED THAT THERE IS LESS THAN FOUR FEET OF COVER OVER THE TOP OF A MAIN LINE OR HOUSE LATERAL V.C.P. SEWER WHICH IS NOT INDICATED ON THE PLANS, THE PIPE SHALL BE ENCASED PER S-23, CASE II UNLESS OTHERWISE APPROVED BY THE COUNTY ENGINEER.
11. ALL JOINTS BETWEEN CAST IRON PIPE AND VITRIFIED CLAY PIPE SHALL BE MADE WITH A RUBBER SLEEVE JOINT, TYPE "C" OR "D", WITHIN THE RIGHT OF WAY PER THE STANDARD SPECIFICATIONS, SECTION 306.2.
12. SEWERS TO BE TESTED FOR LEAKAGE PER SECTION 306.3.3 OF THE STANDARD SPECIFICATIONS AND SPECIAL PROVISIONS.
13. RESURFACE ALL TRENCHES WITHIN PAVED AREAS TO MEET L.A. COUNTY ROAD DEPT. OR CALIFORNIA STATE HIGHWAY REQUIREMENTS IN ACCORDANCE WITH PERMITS.
14. FULL COMPLIANCE WITH SECTION 306.1.8 OF THE SPECIAL PROVISIONS WILL BE REQUIRED FOR BACKFILL IN STREETS. CERTIFICATION OF BACKFILL COMPACTION AND SAND EQUIVALENTS BY A QUALIFIED, REGISTERED TESTING LABORATORY SHALL BE PROVIDED BY THE PERMITTEE PRIOR TO THE ISSUANCE OF A CERTIFICATE OF PARTIAL ACCEPTANCE.
15. (X) INDICATES HOUSE LATERALS TO BE CONSTRUCTED WITH A 1/4" RISE PER FOOT TO R/W LINE.

THE FOLLOWING LATEST REVISED STANDARD PLANS ON FILE IN THE OFFICE OF THE COUNTY ENGINEER SHALL APPLY IN THE CONSTRUCTION OF THIS PROJECT:

SECTION	NO.
MINIMUM PUBLIC SAFETY REQUIREMENTS	S-1
STANDARD MANHOLE STEP	S-3
SEWING FOR SEWER PIPE	S-17
CRADLING AND ENCASMENT	S-23
WYE OR TEE SUPPORT	S-26
ALLOWABLE TRENCH WIDTHS	S-29
LOCKING MANHOLE FRAME AND COVER	S-30
NON-REINFORCED PRECAST CONCRETE MANHOLE	S-34
RECTANGULAR SHALLOW MANHOLE	S-7
RECTANGULAR MANHOLE FRAME & COVER	S-10
PRECAST CONCRETE SHALLOW MANHOLE	S-38

COUNTY OF LOS ANGELES, CALIFORNIA  
 JAMES T. ROSTRON - CH. DEP. CO. ENGR. LAS VIRGENES MUNICIPAL WATER DISTRICT  
 APPROVED: *Sam H. Miller* 5-26-76 REGIONAL ENGINEER DATE  
 APPROVED: *N.W. Stokes* GN. MGR. - CH. ENGR. R.C.E. No. 9555  
 CHECKED: *Shirley J. Davis* 5-26-76 DATE  
 REG. C.E. NO. 19166  
 CALABASAS BLDG. DIST. 9.1 J.N. 0358.01



CONNECTION CHARGES FOR L.A. COUNTY AS NOTED. SEE L.V.M.W.D. FOR CONNECTION CHARGES

45481

