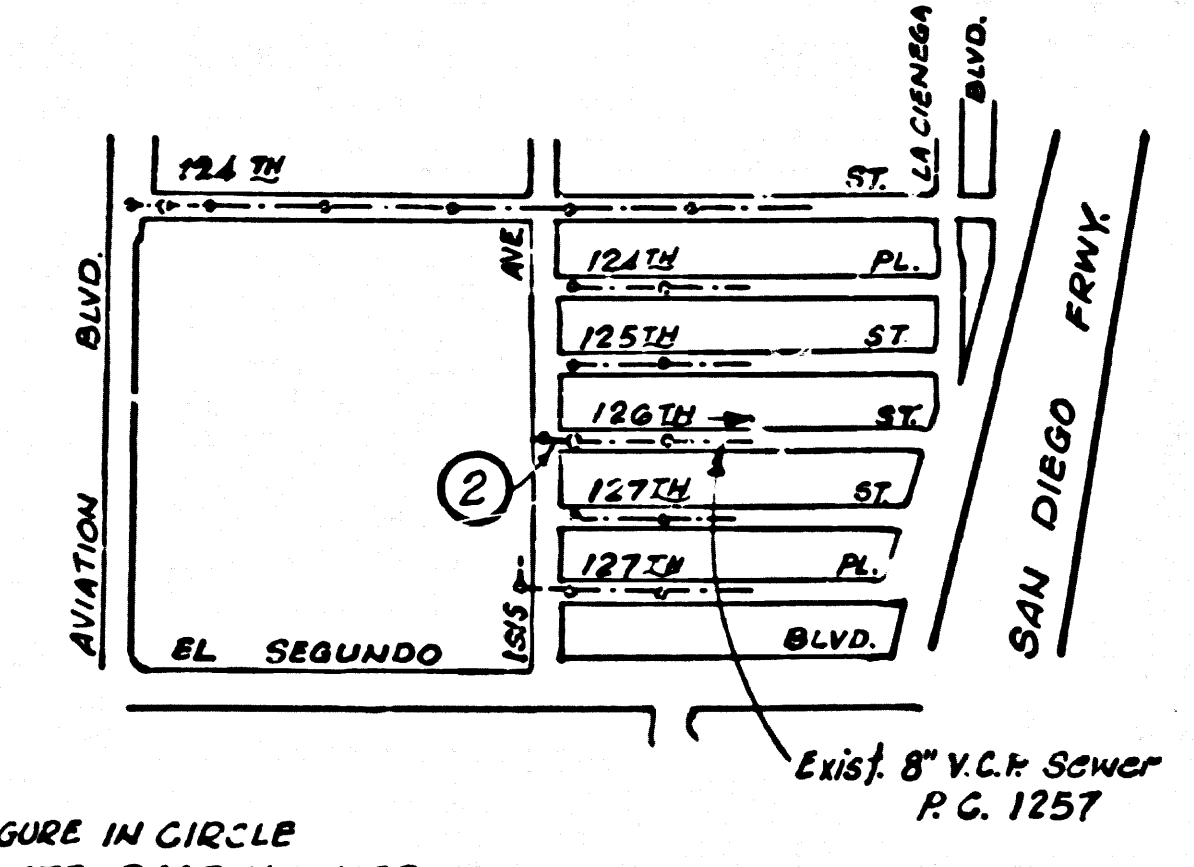


B.M. DAP-1 ELEV. 92.13 F.B. 2311 pg. 13  
 P.K. nail in Lead 5' E. of E. end  
 of curb return at SE cor. of  
 1515 Ave & 126TH St.



NOTE: FIGURE IN CIRCLE  
 INDICATE PAGE NUMBER.

INDEX MAP  
 DEL AIRE PARK GYMNASIUM BUILDING  
 C. C. 9233  
 SCALE: 1" = 600'

**NOTICE TO CONTRACTOR**

- PRIOR TO TRENCH EXCAVATION, THE CONTRACTOR SHALL SUBMIT TO AND OBTAIN APPROVAL FROM THE COUNTY ENGINEER, OF A DETAILED PLAN SHOWING THE DESIGN OF SHORING, BRACING, JACKING, OR PROVISIONS FOR WORKER PROTECTION FROM THE HAZARD OF CAVING GROUND, IF SUCH PLAN VARIES FROM THE SHORING SYSTEM STDS. ESTABLISHED BY THE CONSTRUCTION SAFETY ORDERS, IT SHALL BE PREPARED BY A REGISTERED CIVIL OR STRUCTURAL ENGINEER.
- THE EXISTENCE AND LOCATION OF ANY UNDERGROUND UTILITY OR STRUCTURES SHOWN ON THESE PLANS ARE OBTAINED BY A SEARCH OF THE AVAILABLE RECORDS, TO THE BEST OF OUR KNOWLEDGE, THERE ARE NO EXISTING UTILITIES EXCEPT AS SHOWN.
- THE CONTRACTOR IS REQUIRED TO TAKE PRECAUTIONARY MEASURES TO PROTECT THE UTILITY LINES SHOWN AND ANY OTHER LINES NOT OF RECORD OR NOT SHOWN ON THIS DRAWING.
- NO REVISIONS SHALL BE MADE IN THESE PLANS WITHOUT THE APPROVAL OF THE COUNTY ENGINEER.

COUNTY SANITATION DISTRICTS SHALL BE NOTIFIED 24 HOURS PRIOR TO THE FOLLOWING SO THAT REQUIRED CONNECTION CAN BE MADE.  
 (PHONE: 922-8505 & 638-1151)

**ACCEPTANCE OF THE PROPOSAL**

NO CONNECTION FOR THE DISPOSAL OF INDUSTRIAL WASTES SHALL BE MADE TO SEWERS SHOWN ON THESE DRAWINGS UNTIL A PERMIT FOR INDUSTRIAL WASTE WATER DISCHARGE HAS BEEN ISSUED BY THE SANITATION DISTRICTS FOR SAID CONNECTION.

- CONTRACTOR SHALL NOTIFY THE UTILITY COMPANIES REGARDING MARKING OF SERVICE LINES AND COST OF CUTTING SERVICE LINES.
  - L. A. COUNTY WATER WORKS DIST. NO. 22  
TEL. (213) 374 1211
  - SOUTHERN CALIFORNIA GAS COMPANY  
TEL. (213) 689-2345

**GENERAL NOTES:**

REFER TO SECTION "10-4.1 OF STANDARD SPECIFICATIONS REGARDING SAFETY ORDERS.  
 ALL MANHOLES SHALL BE EITHER BRICK PER S-3 OR PRECAST CONCRETE PER S-36, EXCEPT AS NOTED.  
 "T" OR "T" BRANCHES MAY BE USED FOR CONNECTIONS TO MAIN LINE SEWER, EXCEPT AS NOTED.  
 VITRIFIED CLAY PIPE JOINTS SHALL BE TYPE "D", "F", OR "G" PER SECTION 308.2 OF STANDARD SPECIFICATIONS.  
 ALL JOINTS BETWEEN CAST IRON PIPE AND VITRIFIED CLAY PIPE SHALL BE MADE WITH A RUBBER SLIP-JOINT, TYPE "C" OR "D" (WITH BUSHING IF NECESSARY) PER SECTION 308.3 OF STANDARD SPECIFICATIONS.  
 SEWERS TO BE TESTED FOR LEAKAGE PER SECTION 306.1-A OF STANDARD SPECIFICATIONS AND SPECIAL PROVISIONS.  
 IF A POWER POLE IS WITHIN THREE FEET OF THE SEWER, THE SEWER SHALL BE ENCASED, PER S-23 CASE II, TWO FEET ON EACH SIDE FROM THE POINT OF INTERFERENCE.  
 HOUSE LATERALS SHALL BE CONSTRUCTED WITH 1/2" RISE PER FOOT TO PROPERTY LINE.  
 HOUSE LATERALS SHALL BE CONSTRUCTED WITH 1/4" RISE PER FOOT TO PROPERTY LINE.  
 ALL HOUSE LATERALS SHALL BE CONSTRUCTED IN A STRAIGHT ALIGNMENT AT RIGHT ANGLES FROM THE MAIN LINE SEWER EXCEPT AS SHOWN ON THE PLANS. HOUSE LATERALS FROM CHIMNEYS SHALL NOT HAVE AN ANGLE OF LESS THAN 45 DEGREES WITH THE MAIN LINE SEWER.  
 ALL CONCRETE CROSS GUTTERS, CURBS, GUTTERS, PAVEMENT, AND DRIVEWAYS SHALL BE TUNNELED OR JACKED PER LOS ANGELES COUNTY ROAD DEPARTMENT REQUIREMENTS.

**STREET RESURFACING:**

STREET RESURFACING METHODS SHALL BE IN ACCORDANCE WITH SECTION 306.1.5 OF THE SPECIAL PROVISIONS.  
 FINAL STREET RESURFACING IN ANY LOCATION SHALL BE COMPLETED WITHIN 90 DAYS AFTER COMPLETION OF TRENCH BACKFILL.  
 THE RESURFACED AREA SHALL BE SEALED WITH BITUMEN/UMSLON AND 1/2" INCH CRUSHED ROCK.  
 RESURFACING SCHEDULE: RESURFACE TRENCH WITHIN PAVED AREA WITH TYPE "2" ASPHALTIC CONCRETE 5" INCHES IN THICKNESS ON 6" INCHES OF AGGREGATE BASE MATERIALS, IN 13 1/2' AVE.  
 RESURFACE TRENCH WITHIN PAVED AREA WITH TYPE "3" ASPHALTIC CONG. 3" INCHES IN THICKNESS ON 6" INCHES OF AGGREGATE BASE MATERIALS IN 12' 6" ST.

THE FOLLOWING LATEST REVISED STANDARD PLANS ON FILE IN THE OFFICE OF COUNTY ENGINEER SHALL APPLY IN THE CONSTRUCTION OF THIS PROJECT:

LEGEND	S-1	CRADLING AND ENCASEMENT	S-23
MINIMUM PUBLIC SAFETY REQUIREMENT	S-2	STANDARD WYE ON THE SUPPORT	S-24
RICK MANHOLE	S-3	ALLOWABLE TRENCH WIDTHS	S-25
MANHOLE B.T.	S-7	LOCKING MANHOLE FRAME AND COVER	S-27
BEDDING FOR SEWER PIPE	S-17	NON-REINFORCED PRECAST CONCRETE MANHOLE	S-34
SPECIAL SUPPORT AND PROTECTION	S-22		

THE CONTRACTOR SHALL OBTAIN THE FOLLOWING PERMITS PRIOR TO CONSTRUCTION.

- LOS ANGELES COUNTY ROAD DEPARTMENT (SEE EXEMPT)
- LOS ANGELES COUNTY ENGINEER CONSTRUCTION PERMIT (SEE EXEMPT)

**CASH CONTRACT NO. 9233**

SANITARY SEWERS  
 TO BE CONSTRUCTED FOR

**DEL AIRE PARK  
 GYMNASIUM BUILDING**  
 1 SHEET, 2 PAGES

SCALE VERT. 1" = 4'  
 HORIZ. 1" = 40'

FEBRUARY, 1976

COUNTY OF LOS ANGELES, CALIFORNIA  
 DEPARTMENT OF COUNTY ENGINEER

APPROVED: *Handwritten Signature* 2/12/76  
 HEAD, DESIGN BRANCH (DATE)  
 DESIGNED: *Handwritten Signature* 2-12-76  
 REG. C. E. NO. 10943

46430

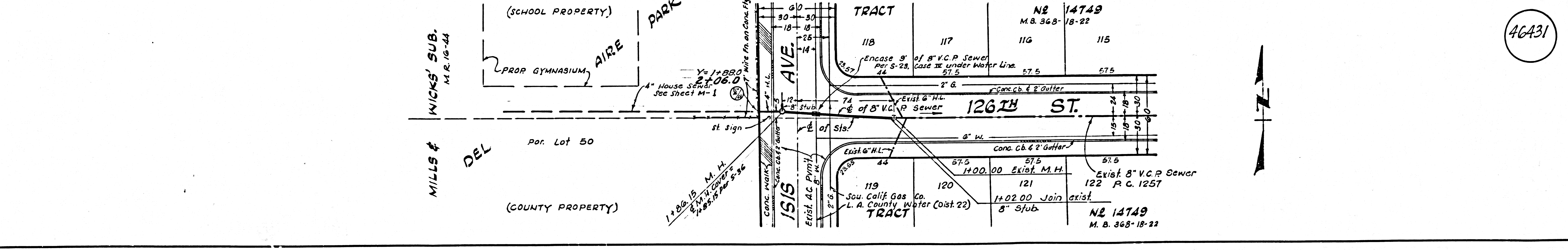
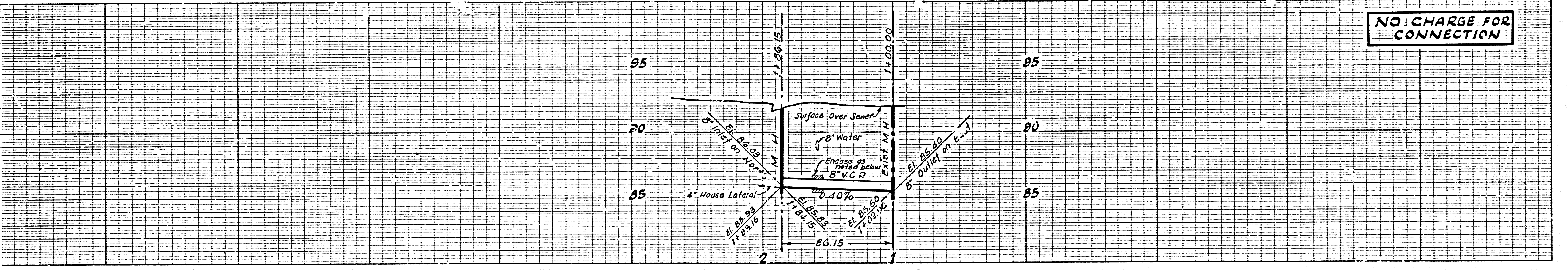
JOHN D. PARKHURST  
 CHIEF ENGINEER OF COUNTY  
 SANITATION DISTRICT NO. 5  
 APPROVED: *Handwritten Signature*  
 OFFICE ENGINEER

**NOTES:**

WORK SHALL BE CONSTRUCTED ACCORDING TO THE STANDARD SPECIFICATIONS FOR PUBLIC WORKS CONSTRUCTION (1973 EDITION WITH 1974 SUPPLEMENTS) AND COUNTY ENGINEER SPECIAL PROVISIONS FOR THE CONSTRUCTION OF SANITARY SEWERS DATED MARCH 1, 1974 AND SHALL BE PROSECUTED ONLY IN THE PRESENCE OF THE COUNTY ENGINEER.  
 THE CONTRACTOR SHALL NOTIFY THE DESIGN DIVISION BY TELEPHONE 974-7255 AT LEAST 24 HOURS BEFORE STARTING ANY WORK UNDER THIS CONTRACT.  
 GRADES TO WHICH THE IMPROVEMENT IS TO BE CONSTRUCTED ARE SHOWN ON PLANS AND PROFILES. GRADE POINTS FOR TOP OF CURB, CENTER LINE OF STREET OR CENTER LINE OF ALLEY ARE SHOWN BY CIRCLES ON PROFILES. AT ALL POINTS BETWEEN DESIGNATED POINTS THE GRADE SHALL BE ESTABLISHED SO AS TO CONFORM TO A STRAIGHT LINE DRAWN BETWEEN SAID DESIGNATED POINTS.  
 ELEVATIONS ARE IN FEET ABOVE U.S.C. & G.S. MEAN LEVEL DATUM OF 1929.  
 THIS DRAWING AND THE DATA HEREON ARE HEREBY MADE A PART OF THE SPECIFICATIONS.

LAYOUT	T. HONDA	FEB. 1976	CHECKED	R. ANDERSON	FEB. 1976
TRACED	T. HONDA	FEB. 1976	MAINTENANCE		
F. B.			A. B.		W. S. 25
LENNOX			BUILDING DISTRICT NO. 7		

NO CHARGE FOR CONNECTION



46431