

CASH CONTRACT NO. 9240

SANITARY SEWERS  
TO BE CONSTRUCTED FOR

46,267

FIRE STATION 1

1 SHEET, 2 PAGES

SCALE VERT. 1" = 4'  
HORIZ. 1" = 40'

MARCH, 1976

COUNTY OF LOS ANGELES, CALIFORNIA  
DEPARTMENT OF COUNTY ENGINEER

APPROVED *[Signature]* 3/10/76  
HEAD, DESIGN BRANCH (DATE)

DESIGNED *[Signature]* 3-10-76  
REC. C. E. NO. 18443 (DATE)

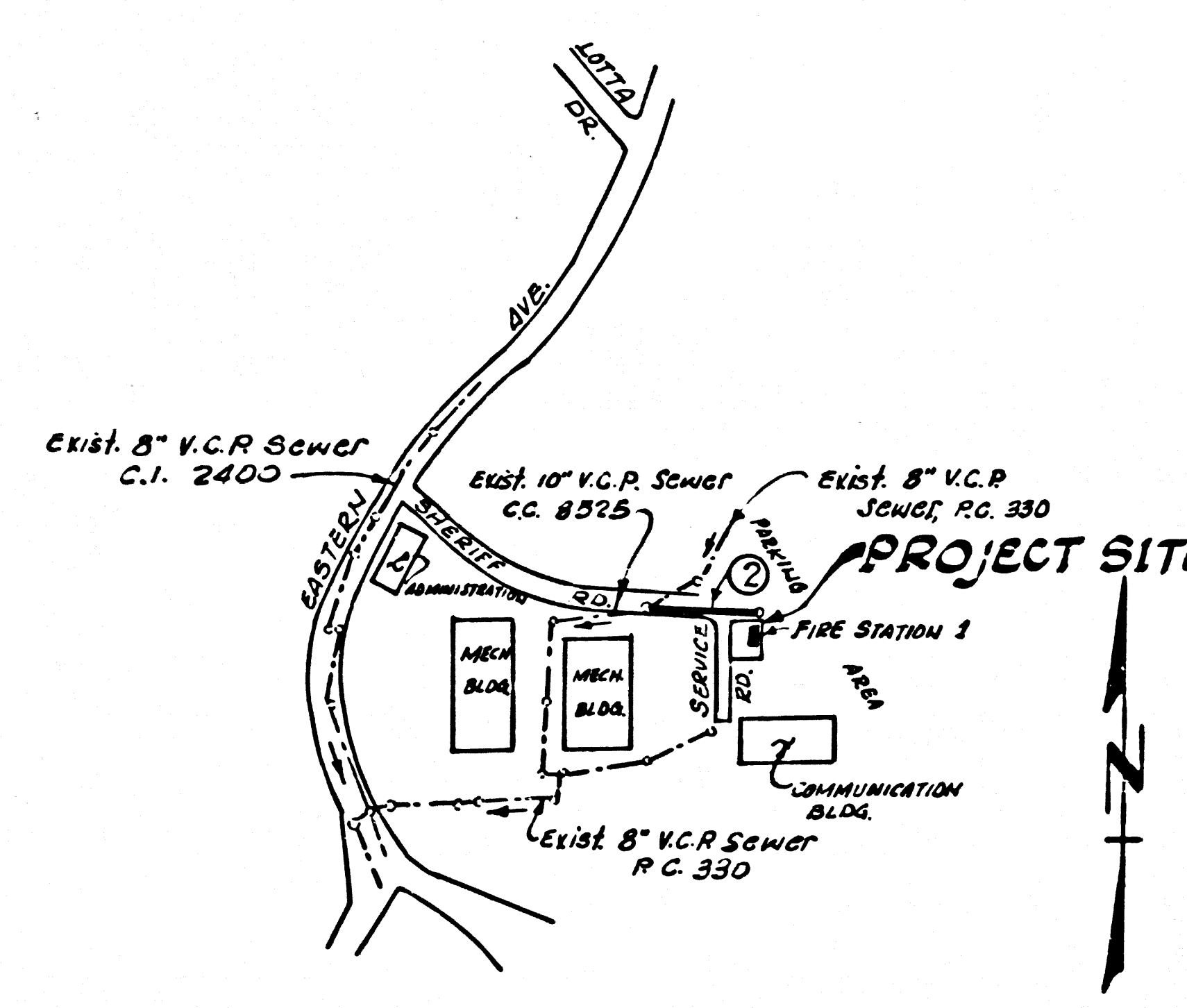
APPROVED *[Signature]*  
FORBESTER AND FIRE WARDEN

APPROVED *[Signature]*  
OFFICE ENGINEER

NOTES:  
WORK SHALL BE CONSTRUCTED ACCORDING TO THE STANDARD SPECIFICATIONS FOR PUBLIC WORKS CONSTRUCTION (1973 EDITION WITH 1974 SUPPLEMENTS) AND COUNTY ENGINEER SPECIAL PROVISIONS FOR THE CONSTRUCTION OF SANITARY SEWERS DATED MARCH 1, 1974 AND SHALL BE PROSECUTED ONLY IN THE PRESENCE OF THE COUNTY ENGINEER.  
THE CONTRACTOR SHALL NOTIFY THE ENGINEER BY TELEPHONE 574-7288 AT LEAST 24 HOURS BEFORE STARTING ANY WORK UNDER THIS CONTRACT.  
GRADES TO WHICH THIS IMPROVEMENT IS TO BE CONSTRUCTED ARE SHOWN ON PLANS AND PROFILES. GRADE POINTS FOR TOP OF CURB, CENTER LINE OF STREET OR CENTER LINE OF ALLEY ARE SHOWN BY CIRCLES ON PROFILES. AT ALL POINTS BETWEEN DESIGNATED POINTS THE GRADE SHALL BE ESTABLISHED SO AS TO CONFORM TO A STRAIGHT LINE DRAWN BETWEEN SAID DESIGNATED POINTS.  
ELEVATIONS ARE IN FEET ABOVE U.S.C. & G.S., SEA LEVEL DATUM OF 1929.  
THIS DRAWING AND THE DATA HEREON ARE HEREBY MADE A PART OF THE SPECIFICATIONS.

LAYOUT	T. HONDA	MAR 1976	CHECKED	R. ANDERSON	MAR 1976
TRACED	T. HONDA	MAR 1976	MAINTENANCE		
F. B.			A. B.	W. S. 36	
				BUILDING DISTRICT NO.	
				J. N. 0738.25	

T.B.M. 3 ELEV. 464.43 F.B. 3828-221  
47' At 9pk. W & T  
INTERSECTION OF SHERIFF RD.  
& SERVICE RD.



NOTE: FIGURE IN CIRCLE INDICATES PAGE NUMBER.

INDEX MAP  
FIRE STATION 1 C.C. 9240  
Scale: 1" = 600'

NOTICE TO CONTRACTOR

1. PRIOR TO TRENCH EXCAVATION THE CONTRACTOR SHALL SUBMIT TO AND OBTAIN APPROVAL FROM THE COUNTY ENGINEER OF A DETAILED PLAN SHOWING THE DESIGN OF SHORING, BRACING, SLOPING, OR PROVISIONS FOR WORKER PROTECTION FROM THE HAZARD OF CAVING GROUND. IF SUCH PLAN VARIES FROM THE SHORING SYSTEMS STDS. ESTABLISHED BY THE CONSTRUCTION SAFETY ORDERS, IT SHALL BE PREPARED BY A REGISTERED CIVIL OR STRUCTURAL ENGINEER.
2. THE EXISTENCE AND LOCATION OF ANY UNDERGROUND UTILITY OR STRUCTURES SHOWN ON THESE PLANS ARE OBTAINED BY A SEARCH OF THE AVAILABLE RECORDS. TO THE BEST OF OUR KNOWLEDGE, THERE ARE NO EXISTING UTILITIES EXCEPT AS SHOWN.
3. THE CONTRACTOR IS REQUIRED TO TAKE PRECAUTIONARY MEASURES TO PROTECT THE UTILITY LINES SHOWN AND ANY OTHER LINES NOT OF RECORD OR NOT SHOWN ON THIS DRAWING.
4. NO REVISIONS SHALL BE MADE IN THESE PLANS WITHOUT THE APPROVAL OF THE COUNTY ENGINEER.

COUNTY SANITATION DISTRICTS SHALL BE NOTIFIED 24 HOURS PRIOR TO THE FOLLOWING SO THAT REQUIRED INSPECTION CAN BE MADE.  
(PHONE: 952-8605 - 638-1151)

ADJACENCE OF THE PROJECT.  
NO ARRANGEMENT FOR THE DISPOSAL OF INDUSTRIAL WASTES SHALL BE MADE TO REVIEWS SHOWN ON THESE DRAWINGS UNTIL A PERMIT FOR INDUSTRIAL WASTE WATER DISCHARGE HAS BEEN ISSUED BY THE SANITATION DISTRICTS FOR SAID CONNECTION.

GENERAL NOTES:  
REFER TO SECTION 710-1.1 OF STANDARD SPECIFICATIONS REGARDING SAFETY ORDERS.  
ALL MANHOLES SHALL BE EITHER BRICK PER S-3 OR PRECAST CONCRETE PER S-36, EXCEPT AS NOTED.  
"T" OR "T" BRANCHES MAY BE USED FOR CONNECTIONS TO MAIN LINE SEWER, EXCEPT AS NOTED.  
VITRIFIED CLAY PIPE JOINTS SHALL BE TYPE "D", "F", OR "G" PER SECTION 308.2 OF STANDARD SPECIFICATIONS.  
ALL JOINTS BETWEEN CAST IRON PIPE AND VITRIFIED CLAY PIPE SHALL BE MADE WITH A RUBBER SLEEVE JOINT, TYPE "C" OR "D" (WITH RUSHING IF NECESSARY) PER SECTION 308.3 OF STANDARD SPECIFICATIONS.  
SEWERS TO BE TESTED FOR LEAKAGE PER SECTION 306.1.4 OF STANDARD SPECIFICATIONS AND SPECIAL PROVISIONS.  
IF A POWER POLE IS WITHIN THREE FEET OF THE SEWER, THE SEWER SHALL BE ENCASED, PER S-23 CASE II, TWO FEET ON EACH SIDE FROM THE POINT OF INTERFERENCE.  
CONSTRUCT HOUSE LATERALS WITH INVERT AT PROPERTY LINE 6 FEET BELOW SURFACE OVER SEWER.

INDICATED DEPTH SHOW CURB GRADE OR GRADE OF CENTER LINE OF STREET.  
INDICATED HOUSE LATERAL SHALL BE CONSTRUCTED WITH 12" DIA. PER FOOT TO PROPERTY LINE.  
INDICATED "C" OR "T" SHALL BE LAID HORIZONTAL AND HOUSE LATERAL SHALL BE CONSTRUCTED WITH 12" DIA. PER FOOT TO PROPERTY LINE.  
ALL HOUSE LATERALS SHALL BE CONSTRUCTED IN A STRAIGHT ALIGNMENT AT RIGHT ANGLES FROM THE MAIN LINE SEWER EXCEPT AS SHOWN ON THE PLANS. HOUSE LATERALS FROM CHIMNEYS SHALL NOT HAVE AN ANGLE OF LESS THAN 45 DEGREES WITH THE MAIN LINE SEWER.  
ALL CONCRETE CROSS CUTTERS, CURBS, GUTTERS, PAVEMENT, AND DRIVEWAYS SHALL BE TUNNELED OR JACKED PER LOS ANGELES COUNTY ROAD DEPARTMENT REQUIREMENTS.

STREET RESURFACING:  
STREET RESURFACING METHODS SHALL BE IN ACCORDANCE WITH SECTION 306-1.1.6 OF THE SPECIAL PROVISIONS.  
FINAL STREET RESURFACING IN ANY LOCATION SHALL BE COMPLETED WITHIN 30 DAYS AFTER COMPLETION OF TRENCH BACKFILL.  
THE RESURFACED AREA SHALL BE SEALED WITH #1 EMULSION AND 1/4 INCH CULMID BUCK.  
RESURFACING SCHEDULE RESURFACE TRENCH WITHIN PAVED AREA WITH TYPE 3 ASPHALTIC CONCRETE, 5 INCHES IN THICKNESS ON 16 INCHES OF AGGREGATE BASE MATERIALS, IN SHERIFF ROAD.  
RESURFACE TRENCH WITHIN PAVED AREA WITH ASPHALTIC CONCRETE 3 INCHES IN THICKNESS ON 4 INCHES OF AGGREGATE BASE MATERIAL IN PARKING AREA.

THE FOLLOWING LATEST REVISED STANDARD PLANS ON FILE IN THE OFFICE OF COUNTY ENGINEER SHALL APPLY IN THE CONSTRUCTION OF THIS PROJECT.

LEGEND	S-1	CRADING AND ENCASUREMENT	S-23
MINIMUM PUBLIC SAFETY REQUIREMENT	S-2	STANDARD WTY OR TEE SUPPORT	S-26
BRICK MANHOLE	S-3	ALLOWABLE TRENCH WIDTHS	S-28
MANHOLE STEP	S-17	LOCKING MANHOLE FRAME AND COVER	S-28
BIDDING FOR SEWER PIPE	S-21	NON-REINFORCED PRECAST CONCRETE MANHOLE	S-26
SPECIAL SUPPORT AND PROTECTION	S-22		

THE CONTRACTOR SHALL OBTAIN THE FOLLOWING PERMITS PRIOR TO CONSTRUCTION:

1. L. A. COUNTY CONSTRUCTION PERMIT (FEE EXEMPT)
  - 2.
- THE UNDERGROUND UTILITY COMPANIES WITHIN THE LIMITS OF THIS PROJECT ARE AS FOLLOWS:  
1) SCL. CALIF. EDISON CO.  
2) PAC. TEL. CO.  
3)

PRIVATE SEWER

46,268

