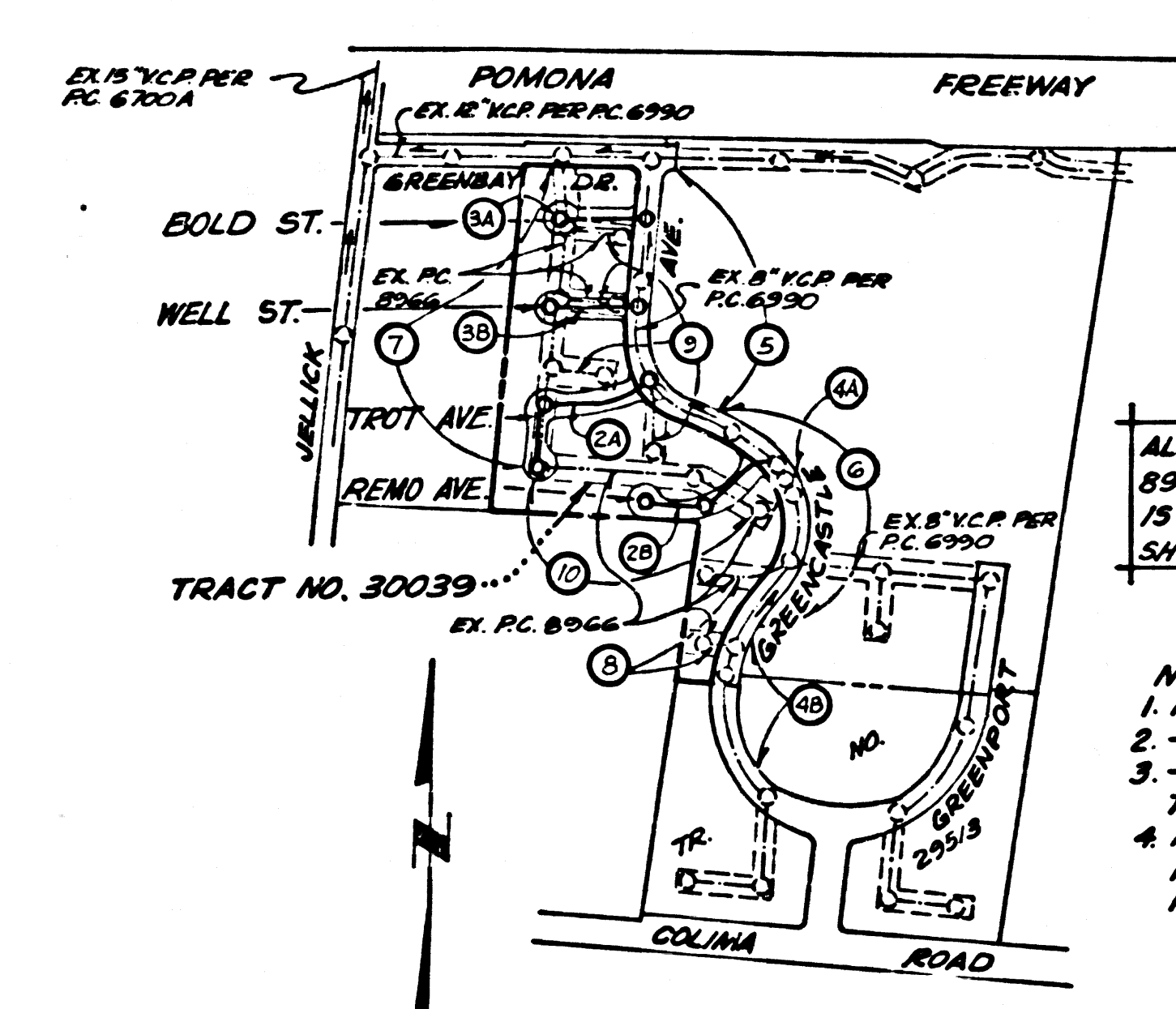


CONSTRUCTED IN
TRACT NO. 30039
 PRIVATE CONTRACT NO. 9243

W.S. 38, D-4
 5 SHEETS, 10 PAGES
 SCALE: VERT. 1"=6' HORIZ. 1"=40'
 FEBRUARY, 1976
 PREPARED IN THE OFFICES OF
ARTHUR G. ROSENTHAL
 8820 SEPULVEDA BLVD., LOS ANGELES, CA. 90045
 BY: *Paul W. J. Schmidt*
 REG. C. E. No. 20457

45,583

B.M. B.G. 3814 ELEV. 440.571
 RAMSET IN TOP OF CURB NEAR
 M.C.R. 33'S. & 28'E. INT. OF
 JELICK & GREENBAY
 OTTERBEIN QUAD. 1970



P.C. 9243
INDEX MAP
TRACT 30039
 SCALE: 1"=600'

ALL PORTIONS OF EXIST. R.C. 8966 WITHIN TR. NO. 30039 IS TO BE ABANDONED PER SPTS. 7-10

NOTE:
 1. NUMBERS IN CIRCLES INDICATE PG. NOS.
 2. --- INDICATES EX. SEWER LINES
 3. - - - INDICATES EX. SEWER LINES TO BE ABANDONED
 4. ALL EX. & PROP. SEWER LINES SHOWN HEREON ARE 8" V.C.P. EXCEPT AS OTHERWISE NOTED.

BEFORE BREAKING INTO OR CONSTRUCTION ON A COUNTY SANITATION DISTRICT SEWER AND PRIOR TO FINAL ACCEPTANCE OF THE PROJECT SANITATION DISTRICT INSPECTOR SHALL BE NOTIFIED BY PHONE 962-8905, SO THAT REQUIRED INSPECTION CAN BE MADE.
 NO CONNECTION FOR THE DISPOSAL OF INDUSTRIAL WASTES SHALL BE MADE TO SEWERS SHOWN ON THESE DRAWINGS UNTIL A PERMIT FOR INDUSTRIAL WASTE WATER DISCHARGE HAS BEEN ISSUED BY THE SANITATION DISTRICTS FOR SAID CONNECTION.

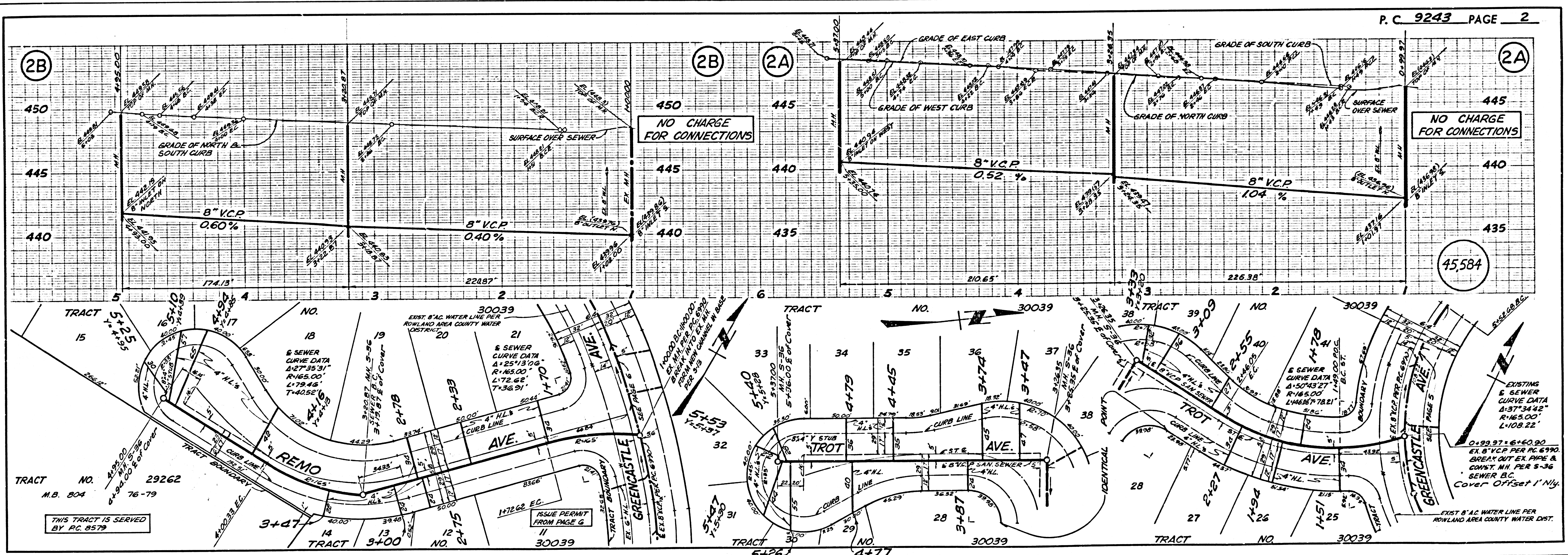
- GENERAL NOTES:**
- ELEVATIONS ARE IN FEET ABOVE U.S.C. & G.S. SEA LEVEL DATUM OF 1929.
 - NO REVISIONS SHALL BE MADE IN THESE PLANS WITHOUT THE APPROVAL OF THE COUNTY ENGINEER.
 - NO REPRESENTATIVE OF THE COUNTY ENGINEER WILL SUFFER OR LAY OUT ANY PORTION OF THE WORK.
 - GRADES TO WHICH THIS IMPROVEMENT IS TO BE CONSTRUCTED ARE SHOWN ON PLANS AND PROFILES. GRADE POINTS FOR TOP OF CURBS, CENTER LINE OF STREETS, OR CENTER LINE OF ALLEYS ARE SHOWN BY CIRCLES ON PROFILES. AT ALL POINTS BETWEEN DESIGNATED POINTS THE GRADE SHALL BE ESTABLISHED SO AS TO CONFORM TO A STRAIGHT LINE DRAWN BETWEEN SAID DESIGNATED POINTS.
 - THE PRIVATE ENGINEER SHALL FURNISH THE COUNTY ENGINEER WITH GRADE SHEETS AND STATIONING FOR ALL HOUSE LATERALS AND "T" OR "T" BRANCHES AND SHALL PROVIDE STAKES FOR THEM AT THEIR PROPER LOCATIONS WITH STATIONING PLAINLY MARKED. ALL HOUSE LATERALS SHALL BE CONSTRUCTED IN A STRAIGHT ALIGNMENT AT RIGHT ANGLES FROM THE MAIN LINE SEWER EXCEPT AS SHOWN ON THE PLANS. HOUSE LATERALS SHALL NOT HAVE AN ANGLE OF LESS THAN 45° WITH THE MAIN LINE SEWER. ANY CHANGE IN ALIGNMENT SHALL BE REQUESTED IN WRITING BY THE PRIVATE ENGINEER.
 - THE PRIVATE ENGINEER SHALL FURNISH THE HOUSE LATERAL DEPTH AT THE PROPERTY LINE BELOW THE TOP OF CURB ELEVATION FOR EACH HOUSE LATERAL ON THE GRADE SHEET.
 - BEFORE WORK CAN BE STARTED, THE CONTRACTOR MUST OBTAIN A PERMIT TO EXCAVATE IN COUNTY STREETS FROM THE L.A. COUNTY ROAD DEPT., DISTRICT OFFICE NO. 1 AND PAY A FEE TO THE COUNTY ENGINEER, 801 W. BOWLING AVE., SAN DIMAS, REGIONAL OFFICE, TO COVER THE COST OF CONSTRUCTION INSPECTION AND RECORD PLANS.
 - IF WORK IS TO BE DONE IN A STATE HIGHWAY, A PERMIT MUST BE OBTAINED FROM THE STATE OF CALIFORNIA, DIVISION OF HIGHWAYS, 120 SOUTH SPRING STREET, LOS ANGELES, CALIFORNIA.
 - APPROVAL OF THIS PLAN BY THE COUNTY OF LOS ANGELES DOES NOT CONSTITUTE A REPRESENTATION AS TO THE ACCURACY OF THE LOCATION OF OR THE EXISTENCE OR NON-EXISTENCE OF ANY UNDERGROUND UTILITY PIPE, OR STRUCTURE WITHIN THE LIMITS OF THIS PROJECT. THIS NOTE APPLIES TO ALL PAGES.
 - REFER TO SECTION 7-10.1 OF THE STANDARD SPECIFICATIONS, REGARDING SAFETY ORDERS.
 - SEWERS TO BE ABANDONED PER SPECIFICATIONS OUTLINED IN THE STANDARD SPECIFICATIONS FOR PUBLIC WORKS.
 - PROVIDE TO ISSUANCE OF THE REQUIRED SEWER CONSTRUCTION PERMIT BY THE COUNTY ENGINEER, THE CONTRACTOR SHALL OBTAIN A PERMIT TO EXCAVATE FROM THE STATE OF CALIFORNIA, DIVISION OF INDUSTRIAL SAFETY.

- CONSTRUCTION NOTES:**
- WORK SHALL BE CONSTRUCTED ACCORDING TO THE STANDARD SPECIFICATIONS FOR PUBLIC WORKS CONSTRUCTION (1972 EDITION) WITH 1987.73 SUPPLEMENTS AND COUNTY ENGINEER SPECIAL PROVISIONS FOR THE CONSTRUCTION OF SANITARY SEWERS DATED MARCH 1, 1974 AND SHALL BE PROSECUTED ONLY IN THE PRESENCE OF THE COUNTY ENGINEER.
 - THE CONTRACTOR SHALL NOTIFY THE CONSTRUCTION DIVISION BY TELEPHONE, (213) 974-7283, AT LEAST TWENTY-FOUR HOURS BEFORE STARTING ANY WORK UNDER THIS CONTRACT.
 - HOUSE LATERALS TO BE CONSTRUCTED WITH INVERTS AT PROPERTY LINE 8 FEET BELOW CURB GRADE EXCEPT AS NOTED.
 - USE OF TEE BRANCHES MAY BE USED FOR CONNECTIONS TO MAINLINE SEWERS EXCEPT AS NOTED.
 - ALL STRUCTURES SHALL BE EITHER BRICK MANHOLES PER S-36 OR PRECAST CONCRETE MANHOLES PER S-36, EXCEPT AS NOTED.
 - PROVIDE STAKES ON THE PROPERTY LINE OR PROPERTY LINES PRODUCED AT RIGHT ANGLES TO THE SEWER LINE AT THE CENTER LINE OF EACH MANHOLE.
 - MANHOLE TOPS IN UNIMPROVED RIGHTS OF WAY TO BE SIX INCHES ABOVE FINISHED GRADE.
 - VITRIFIED CLAY PIPE JOINTS SHALL BE TYPE "B", "F", OR "G" PER STANDARD SPECIFICATIONS SECTION 308-2.
 - IF A POWER POLE IS WITHIN THREE FEET OF THE SEWER, THE SEWER SHALL BE ENCASED, PER S-23, CASE II, TWO FEET ON EACH SIDE FROM THE POINT OF INTERFERENCE.
 - IF DURING THE COURSE OF CONSTRUCTION IT IS DETERMINED THAT THERE IS LESS THAN FOUR FEET OF COVER OVER THE TOP OF A MAIN LINE OR HOUSE LATERAL V.C.P. SEWER WHICH IS NOT INDICATED ON THE PLANS, THE PIPE SHALL BE ENCASED PER S-23, CASE II UNLESS OTHERWISE APPROVED BY THE COUNTY ENGINEER.
 - ALL JOINTS BETWEEN CAST IRON PIPE AND VITRIFIED CLAY PIPE SHALL BE MADE WITH A RUBBER SLEEVE JOINT, TYPE "C" OR "D", (WITH BUSHING IF NECESSARY PER STANDARD SPECIFICATIONS, SECTION 308-2).
 - SEWERS TO BE TESTED FOR LEAKAGE PER SECTION 306-1.6 OF THE STANDARD SPECIFICATIONS AND SPECIAL PROVISIONS.
 - RESURFACE ALL TRENCHES WITHIN PAVED AREAS TO MEET L.A. COUNTY ROAD DEPT. OR CALIFORNIA STATE HIGHWAY REQUIREMENTS IN ACCORDANCE WITH PERMITS.
 - FULL COMPLIANCE WITH SECTION 306-1.5.5 OF THE SPECIAL PROVISIONS WILL BE REQUIRED FOR BACKFILL IN STREETS. CERTIFICATION OF BACKFILL COMPACTION AND SAND EQUIVALENTS BY A QUALIFIED, REGISTERED TESTING LABORATORY SHALL BE PROVIDED BY THE PERMITTEE PRIOR TO THE ISSUANCE OF A CERTIFICATE OF PARTIAL ACCEPTANCE.
 - SEWER ABANDONMENT PROCEDURES:
 A. ALL EXISTING SEWERS TO BE ABANDONED SHALL BE SALVAGED & TAKEN TO A SEWER MAINTENANCE YARD OR USED IN CONSTRUCTION OF NEW LINES.
 B. REMOVE TOP 8" OF MANHOLES, BREAK UP BOTTOMS, PLUS EXIST. INLETS & OUTLETS WITH CONC., & BACKFILL WITH SUITABLE MATERIAL COMPACTED.
 C. ANY OTHER PARTS OF THE MANHOLES SHALL BE REUSED PROVIDED SUCH PARTS ARE INSPECTED AND APPROVED BY THE L.A. COUNTY CONSTRUCTION INSPECTOR.

THE FOLLOWING LATEST REVISED STANDARD PLANS ON FILE IN THE OFFICE OF THE COUNTY ENGINEER SHALL APPLY IN THE CONSTRUCTION OF THIS PROJECT.

LEGEND	S-1
MINIMUM PUBLIC SAFETY REQUIREMENTS	S-2
BRICK MANHOLE	S-3
STANDARD MANHOLE STEP	S-17
BEDDING FOR SEWER PIPE	S-21
CRACKING AND ENCASEMENT	S-23
WYE OR TEE SUPPORT	S-26
ALLOWABLE TRENCH WIDTHS	S-28
LOCKING MANHOLE FRAME AND COVER	S-33
NON-REINFORCED PRECAST CONCRETE MANHOLE	S-36
BREAKING INTO EXISTING MANHOLE	S-38
SADDLES FOR HOUSE LATERALS	S-39

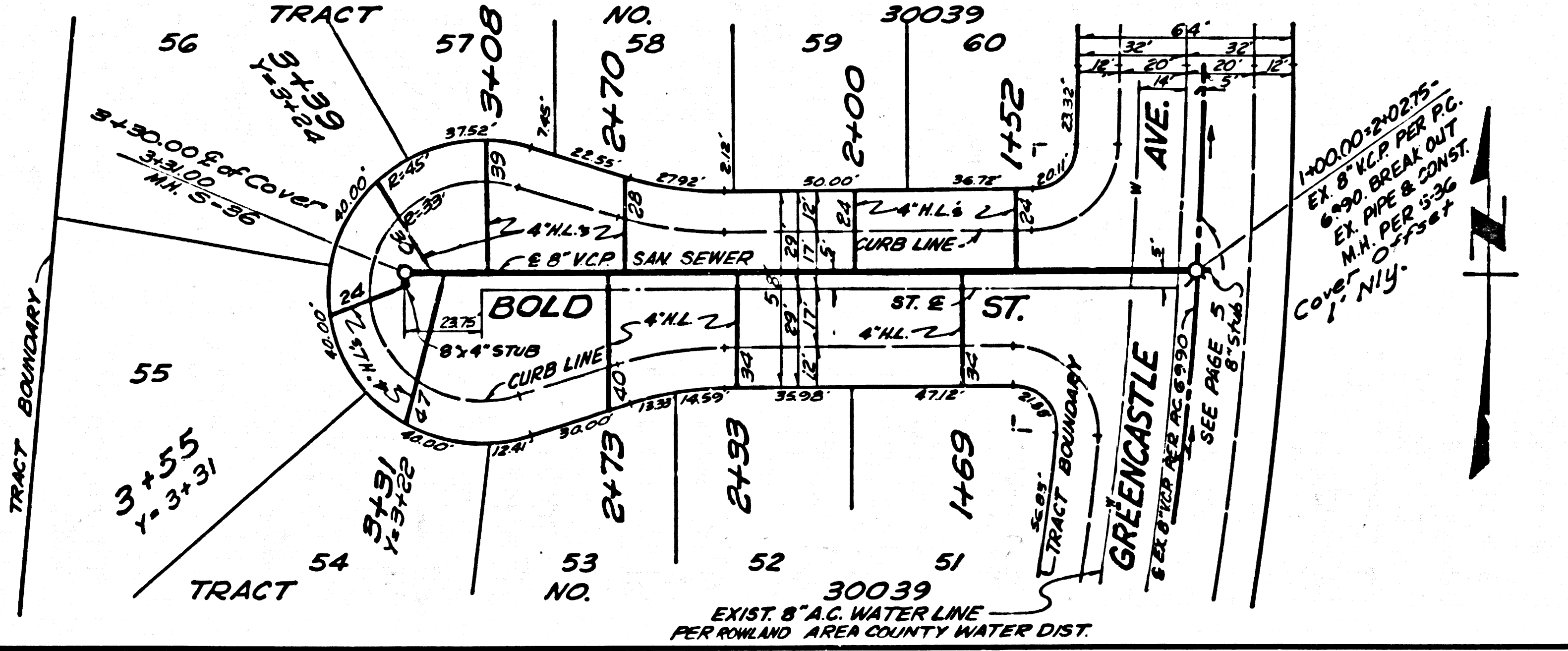
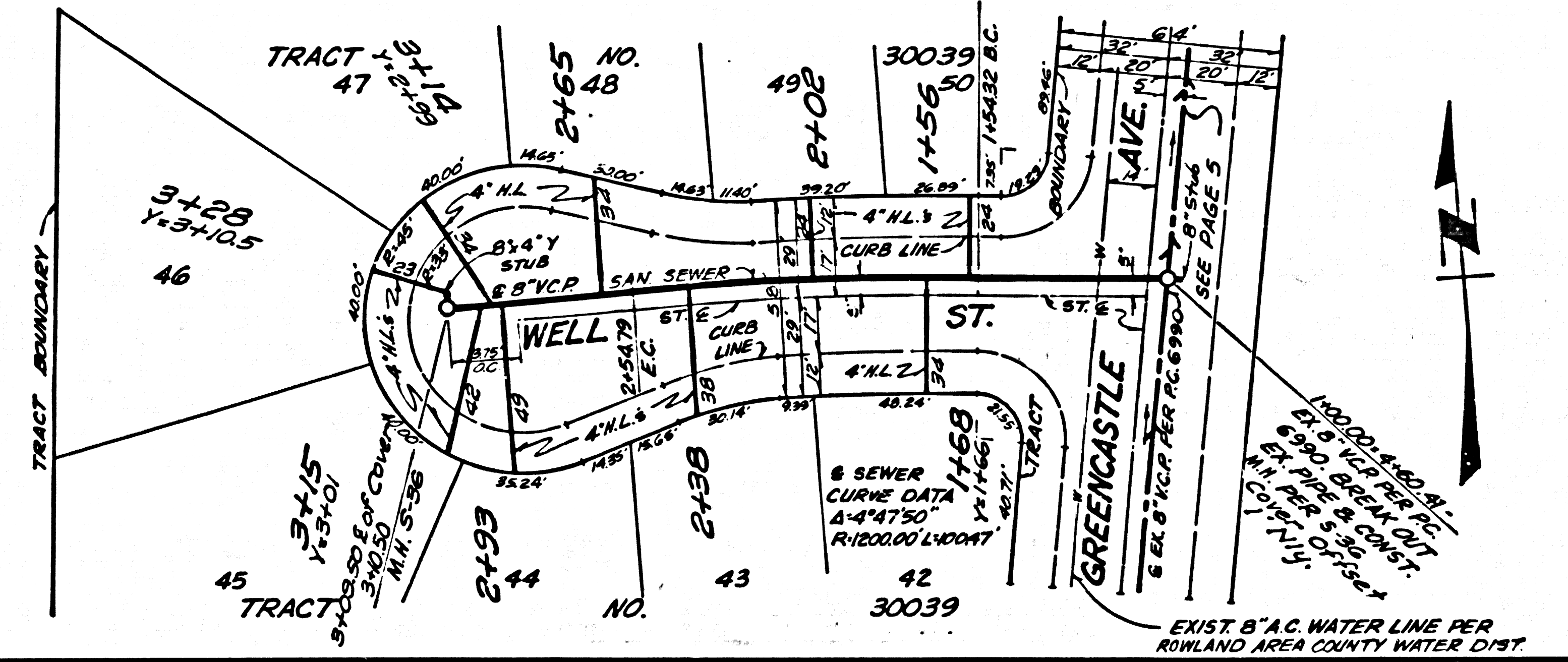
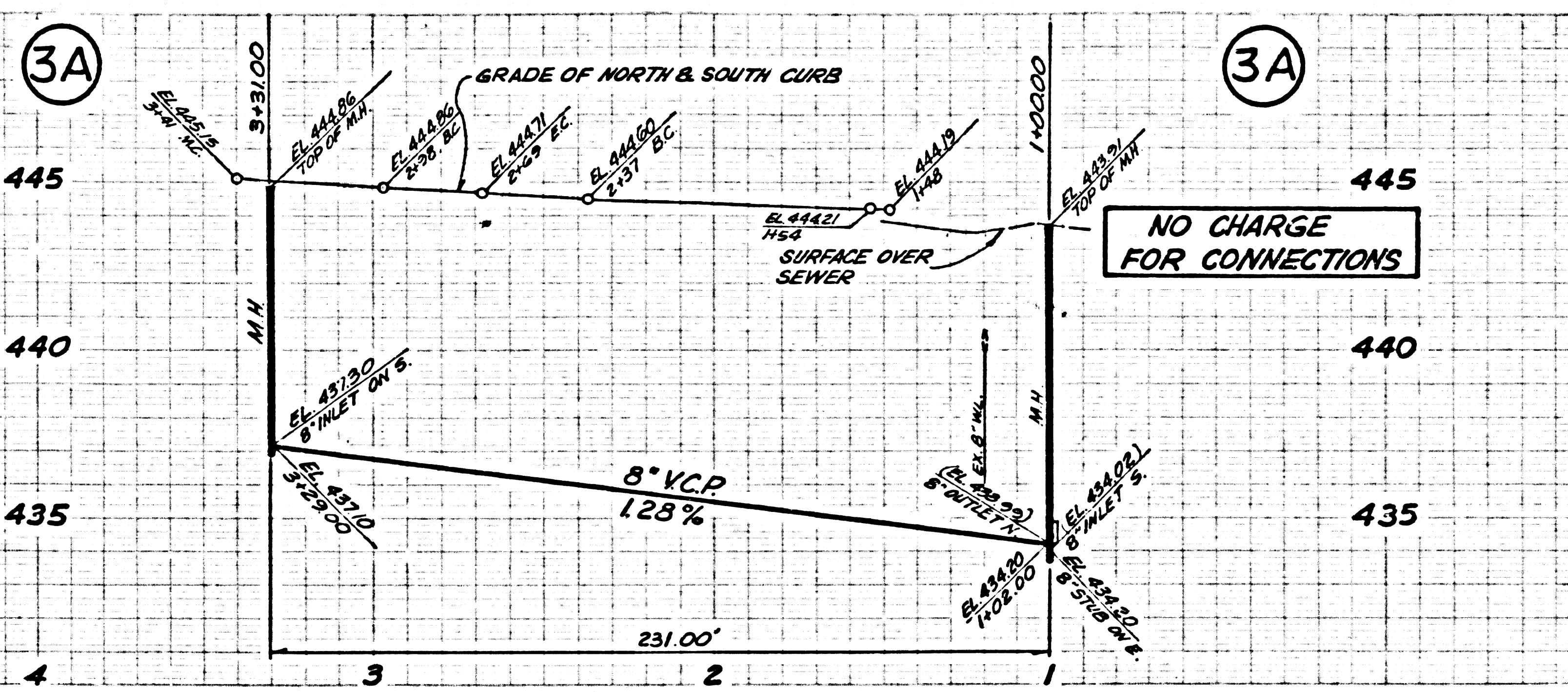
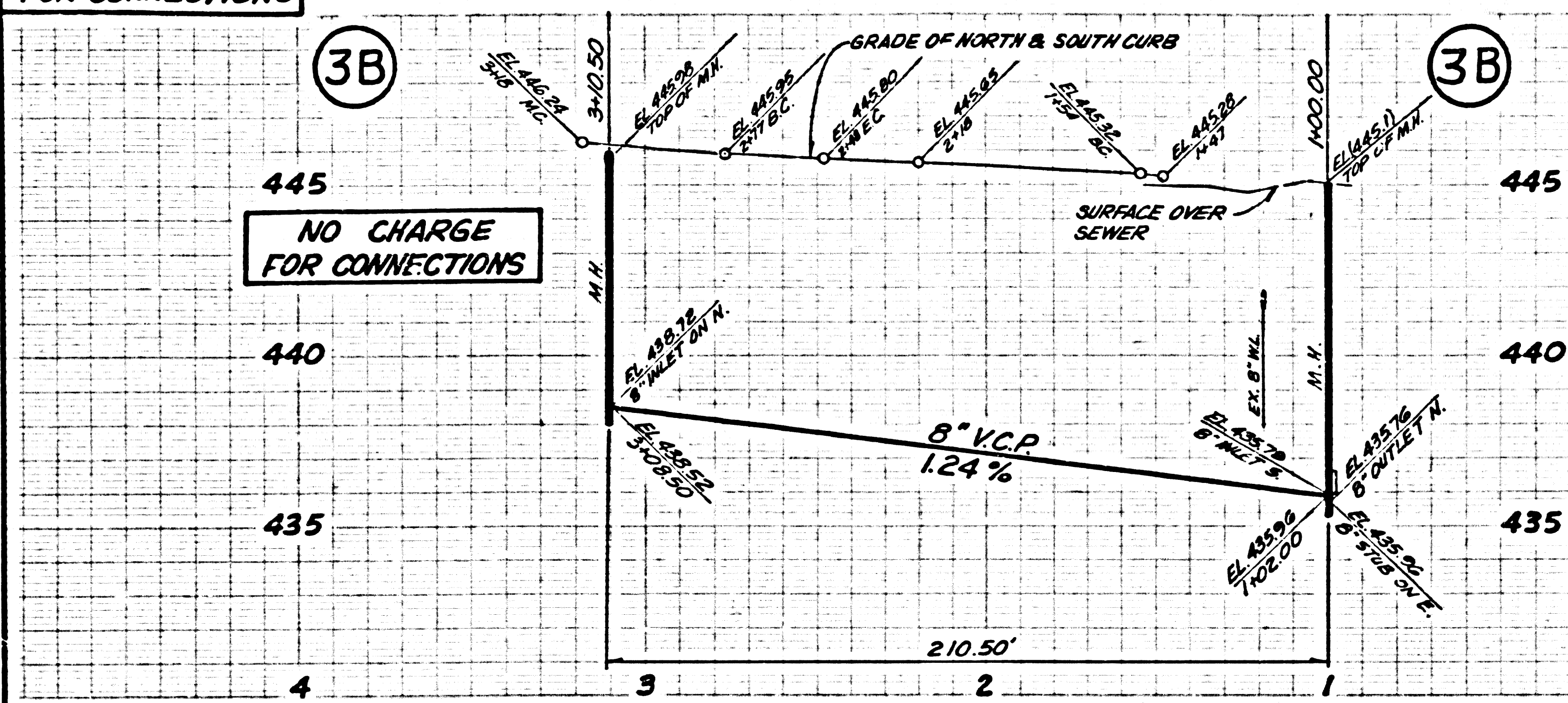
COUNTY OF LOS ANGELES, CALIFORNIA
 DEPARTMENT OF COUNTY ENGINEER JOHN D. PARKHURST, CHIEF ENGINEER
 CO SAN DIST. NO. 2
 APPROVED: *B.T. Worthing* (S.A. CHIEF REGIONAL ENGINEER) APPROVED: *[Signature]* (OFFICE ENGINEER)
 CHECKED: *Thomas E. Howard* (13 May 76) (DATE)
 REG. C.E. NO. 19156
 LA PUENTE BLDG. DIST. 2 J.N. 025002



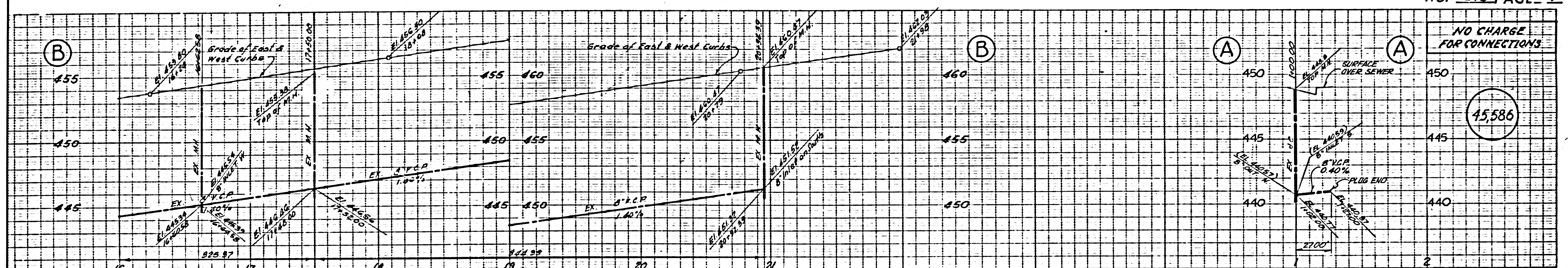
NO CHARGE FOR CONNECTIONS

NO CHARGE FOR CONNECTIONS

45,585

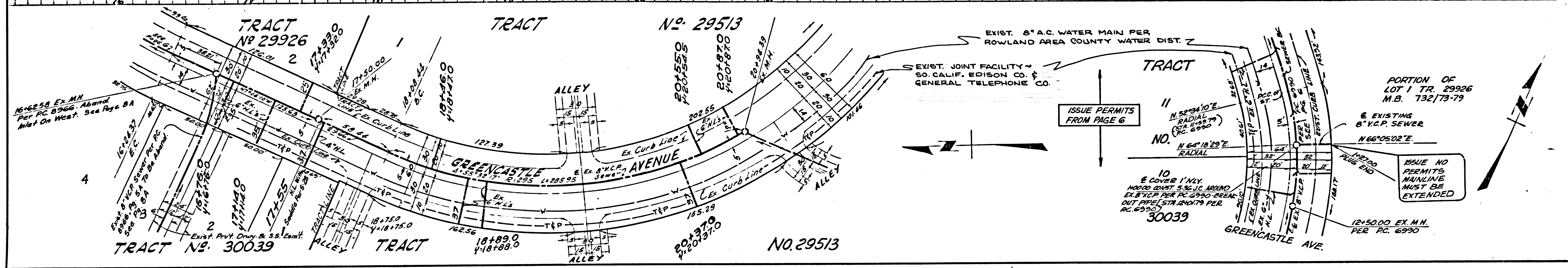


PAGE



NO CHARGE FOR CONNECTIONS

45,586



EXIST. 8" A.C. WATER MAIN PER ROWLAND AREA COUNTY WATER DIST. 7
EXIST. JOINT FACILITY - SO. CALIF. EDISON CO. & GENERAL TELEPHONE CO.

ISSUE PERMITS FROM PAGE 6

PORTION OF LOT 1 TR. 29926 M.B. 132/173-79

EXISTING 8" V.C.P. SEWER
N 66°05'02"E

NO. 11
N 52°34'10"E
RADIAL (STA. 188+79)
(P.C. 6990)

NO. 10
N 64°10'23"E
RADIAL

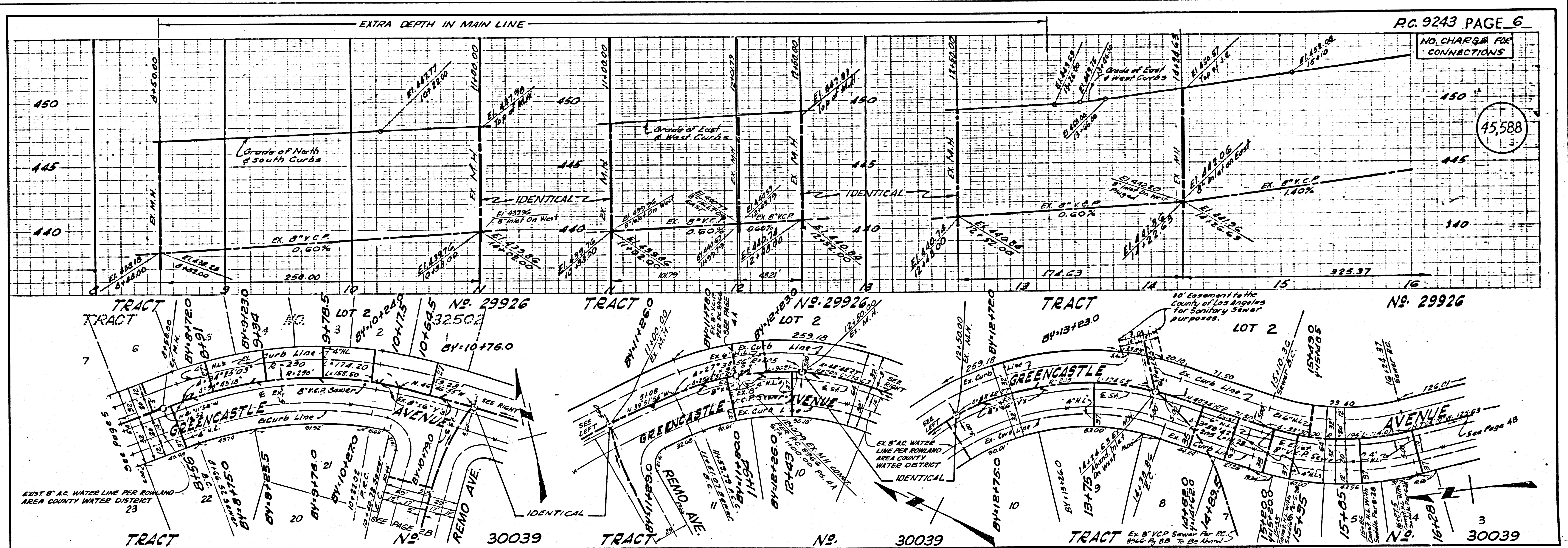
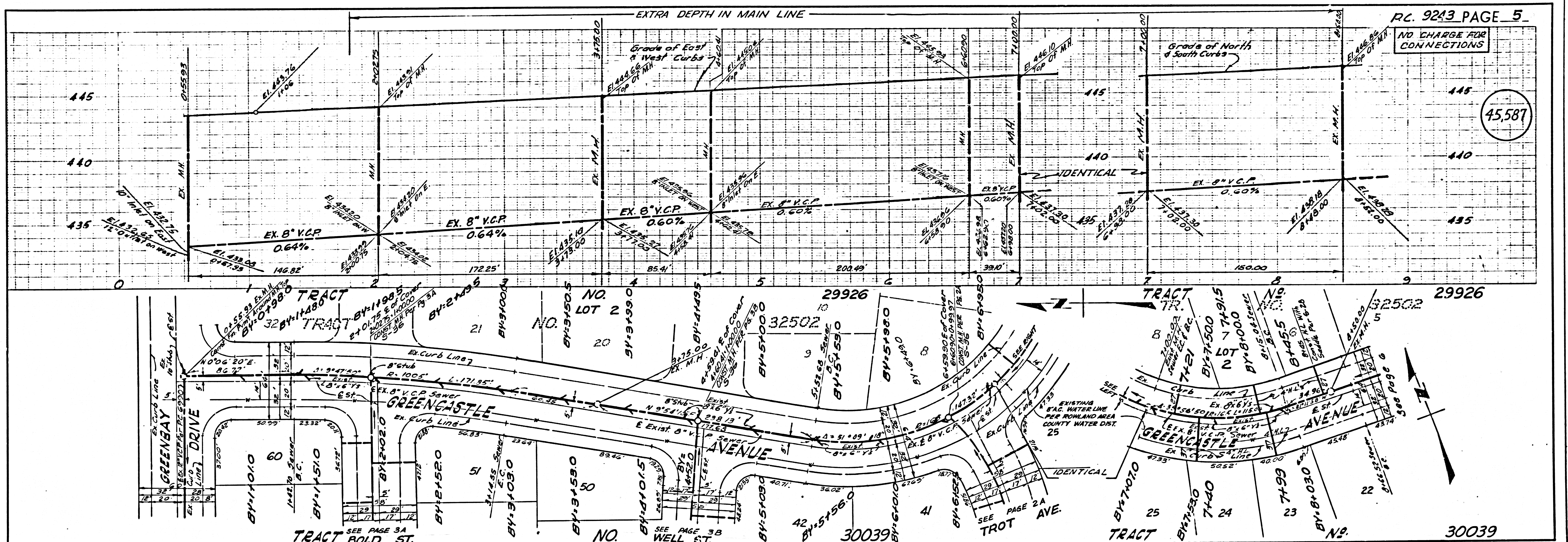
ISSUE NO PERMITS MAINLINE MUST BE EXTENDED

10
& COVER 1" V.C.P.
HORIZ. DIST. 536' 11" AROUND
EX. 8" V.C.P. PER PC. 6990 PRESENT
OUTLINE (STA. 188+79) PER
P.C. 6990

30039

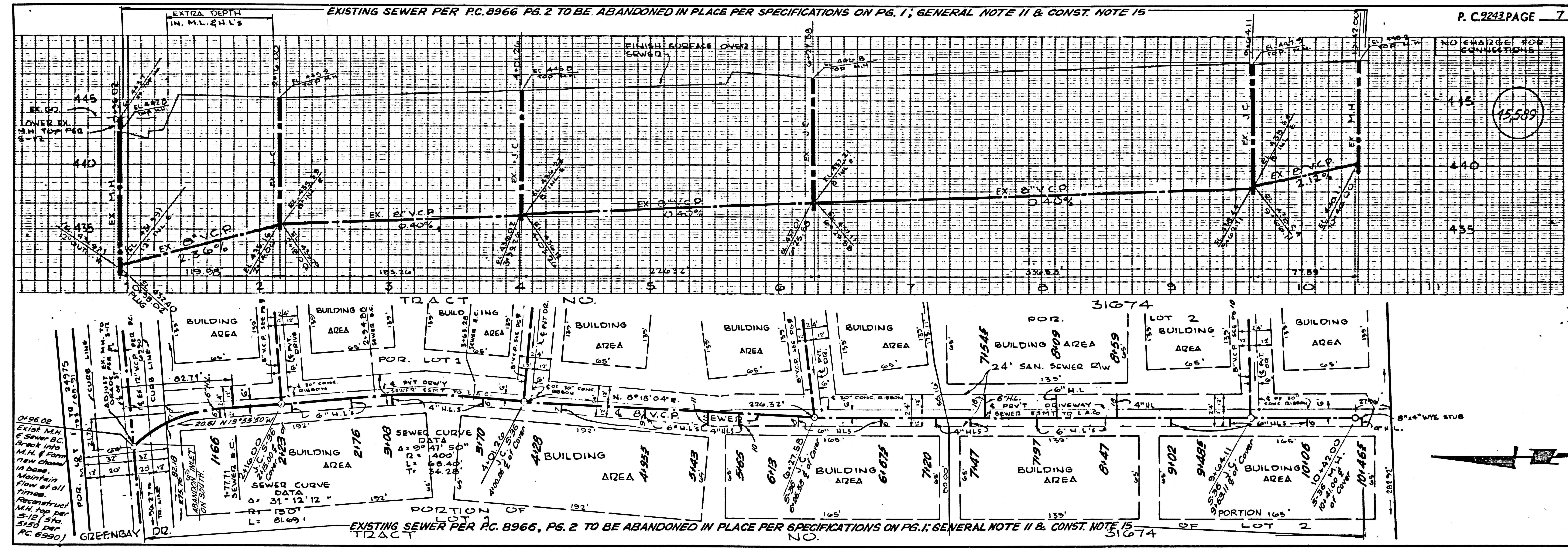
GREENCASTLE AVE.

12+50.00 EX. M.H. PER P.C. 6990



EXISTING SEWER PER P.C. 8966 PG. 2 TO BE ABANDONED IN PLACE PER SPECIFICATIONS ON PG. 1; GENERAL NOTE 11 & CONST. NOTE 15

P. C. 9243 PAGE 7



NO CHARGE FOR CONNECTIONS	
445	15,589
440	
435	

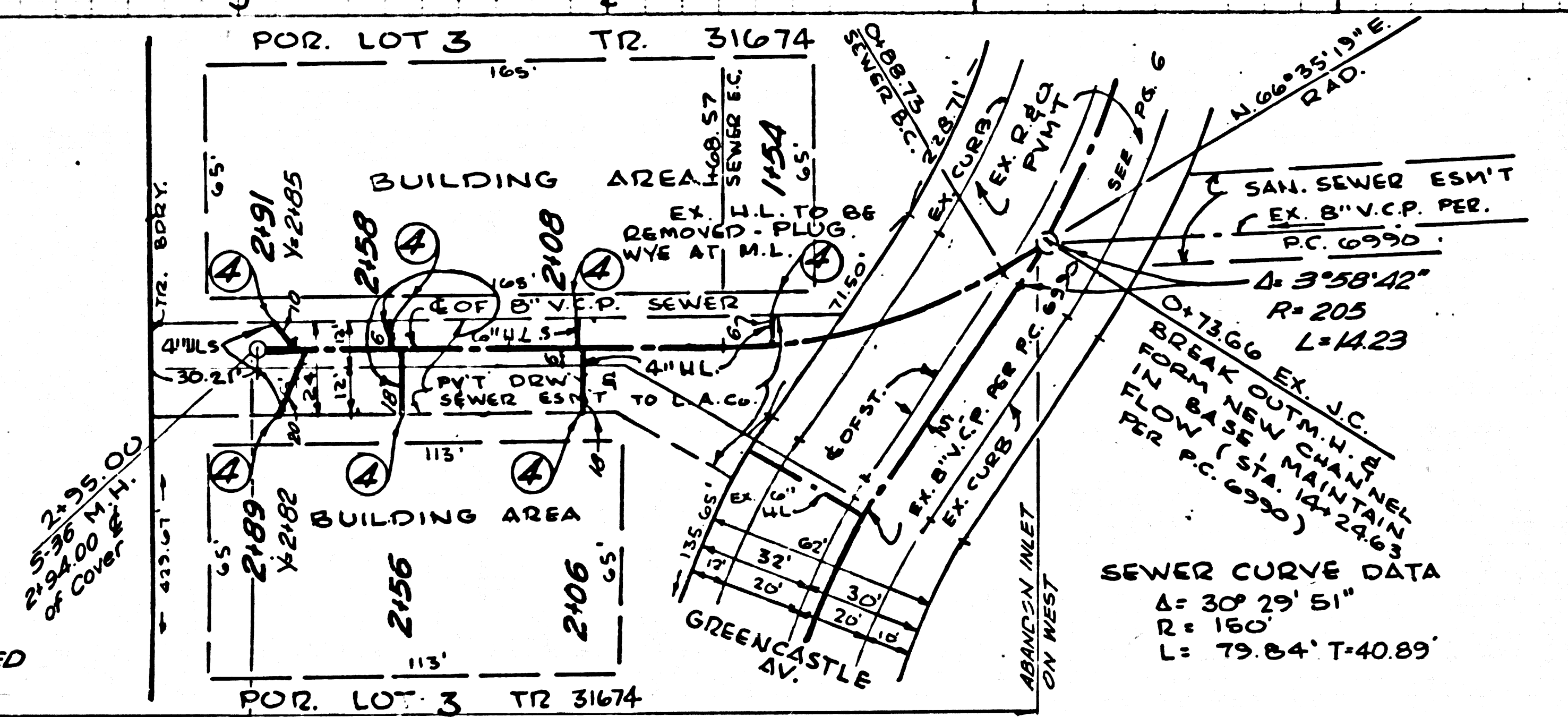
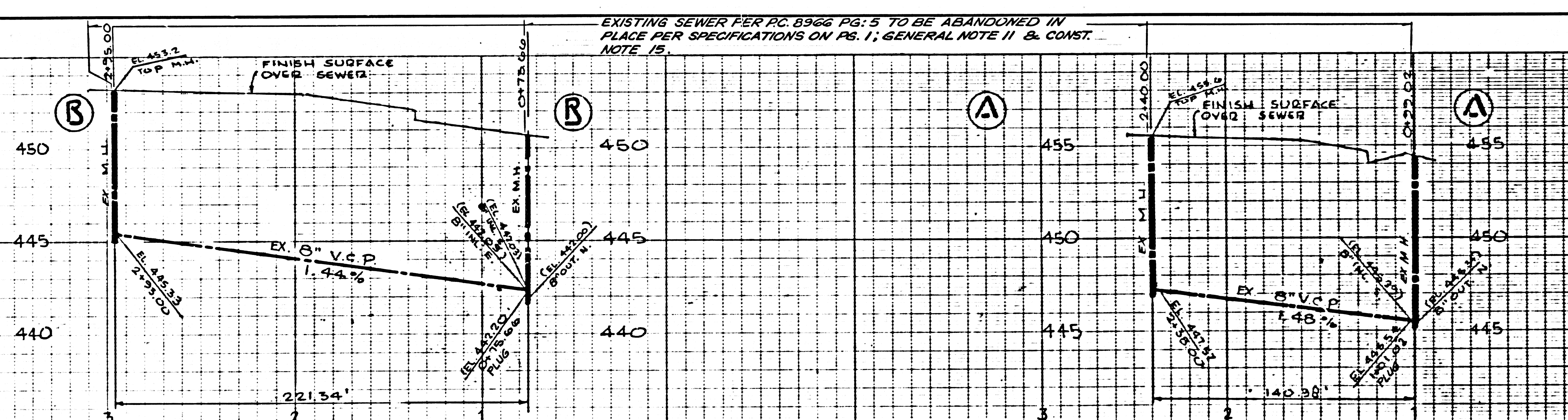
CH 96.02
 EXIST. M.H. & SEWER D.C. Break into M.H. & Form flow channel in base. Maintain flow at all times. Reconstruct M.H. top per S-12 (S-12) 5150 per P.C. 8990)

EXISTING SEWER PER P.C. 8966, PG. 2 TO BE ABANDONED IN PLACE PER SPECIFICATIONS ON PG. 1; GENERAL NOTE 11 & CONST. NOTE 15

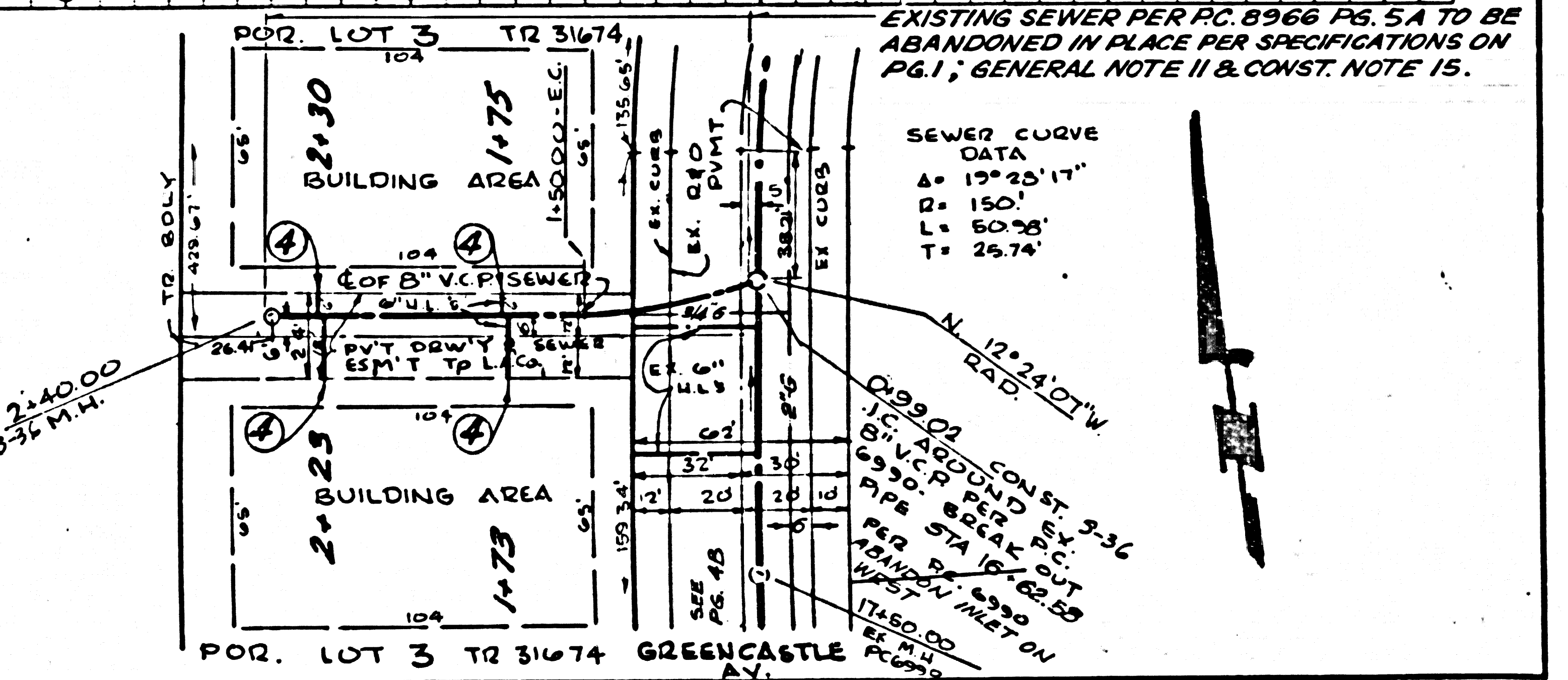
EXISTING SEWER PER P.C. 8966 PG. 5 TO BE ABANDONED IN PLACE PER SPECIFICATIONS ON PG. 1; GENERAL NOTE 11 & CONST. NOTE 15.

P.C. 9243 PAGE 8

NO CHARGE FOR CONNECTIONS



SEWER CURVE DATA
 $\Delta = 30^{\circ} 29' 51''$
 $R = 150'$
 $L = 79.84'$ T=40.89'



SEWER CURVE DATA
 $\Delta = 19^{\circ} 25' 11''$
 $R = 150'$
 $L = 60.98'$ T=25.74'

EXISTING SEWER PER P.C. 8966 PG. 5B TO BE ABANDONED IN PLACE PER SPECIFICATIONS ON PG. 1; GENERAL NOTE 11 & CONST. NOTE 15.

EXISTING SEWER PER P.C. 8966 PG. 5A TO BE ABANDONED IN PLACE PER SPECIFICATIONS ON PG. 1; GENERAL NOTE 11 & CONST. NOTE 15.

