

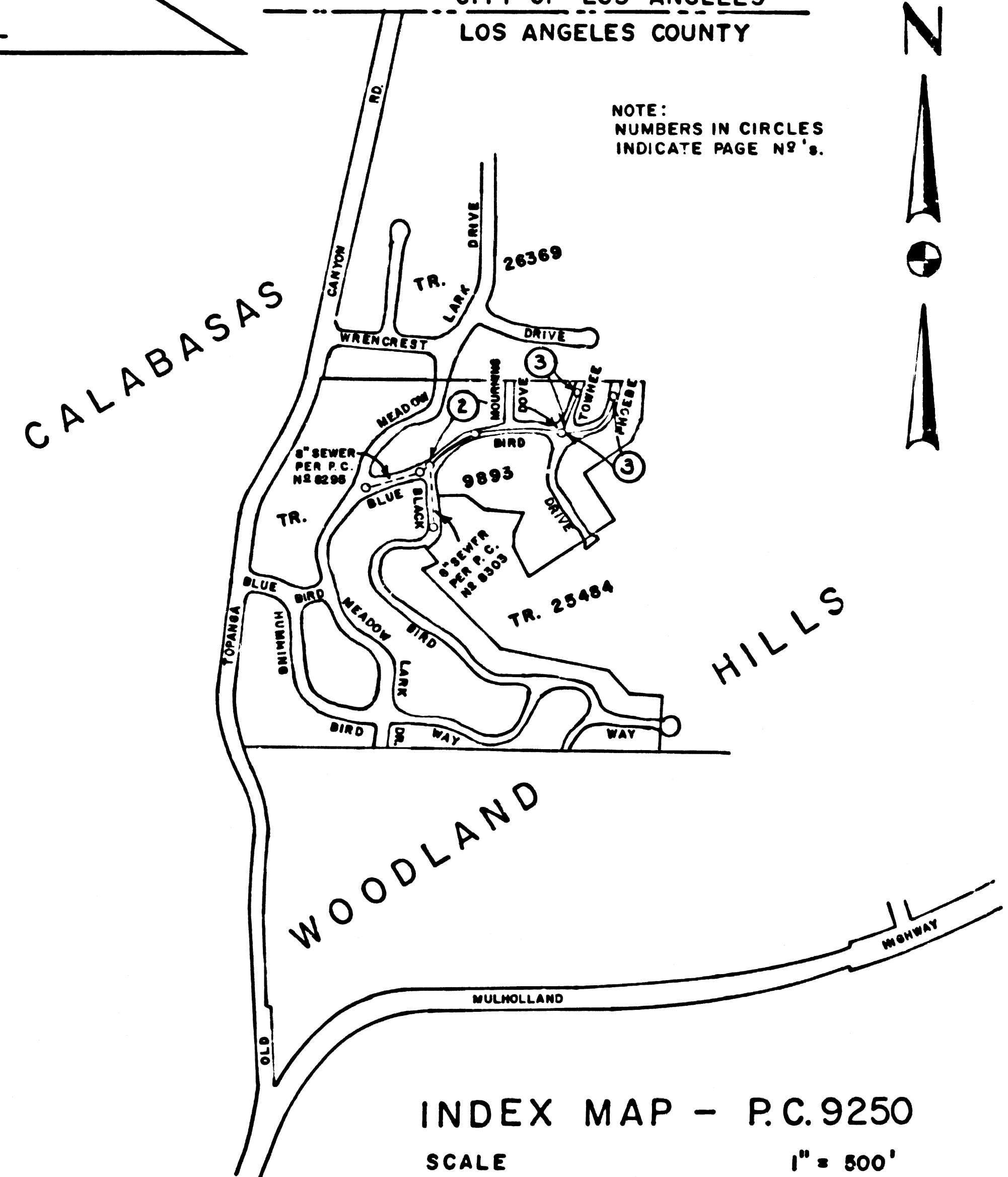
B.M. BY 9032 ELEV. 990.020

R.D.B.M. TAG IN LEAD IN CURB 5' E/O B.C.R. & 20' N/O & 6' E/O CENTERLINE OF OLD TOPANGA RD. & WRENCREST DR.

MALIBU QUAD. 1972

CITY OF LOS ANGELES  
LOS ANGELES COUNTY

NOTE:  
NUMBERS IN CIRCLES  
INDICATE PAGE NO'S.



INDEX MAP - P.C. 9250  
SCALE 1" = 500'

GENERAL NOTES: DOUBLE SCALE

- ELEVATIONS ARE IN FEET ABOVE U.S.C. & G.S. SEA LEVEL DATUM OF 1929.
- NO REVISIONS SHALL BE MADE IN THESE PLANS WITHOUT THE APPROVAL OF THE COUNTY ENGINEER.
- NO REPRESENTATIVE OF THE COUNTY ENGINEER WILL SURVEY OR LAY OUT ANY PORTION OF THE WORK.
- GRADES TO WHICH THIS IMPROVEMENT IS TO BE CONSTRUCTED ARE SHOWN ON PLANS AND PROFILES. GRADE POINTS FOR TOP OF CURBS, CENTER LINE OF STREETS, OR CENTER LINE OF ALLEYS ARE SHOWN BY CIRCLES ON PROFILES. AT ALL POINTS BETWEEN DESIGNATED POINTS THE GRADE SHALL BE ESTABLISHED SO AS TO CONFORM TO A STRAIGHT LINE DRAWN BETWEEN SAID DESIGNATED POINTS.
- THE PRIVATE ENGINEER SHALL FURNISH THE COUNTY ENGINEER WITH GRADE SHEETS AND STATIONING FOR ALL HOUSE LATERALS AND "T" OR "T" BRANCHES AND SHALL PROVIDE STAKES FOR THEM AT THEIR PROPER LOCATIONS WITH STATIONING PLAINLY MARKED. ALL HOUSE LATERALS SHALL BE CONSTRUCTED IN A STRAIGHT ALIGNMENT FROM THE MAIN LINE SEWER EXCEPT AS SHOWN ON THE PLANS. HOUSE LATERALS FROM CHIMNEYS SHALL NOT HAVE AN ANGLE OF LESS THAN 45° WITH THE MAIN LINE SEWER. ANY CHANGE IN ALIGNMENT SHALL BE REQUESTED IN WRITING BY THE PRIVATE ENGINEER.
- THE PRIVATE ENGINEER SHALL FURNISH THE HOUSE LATERAL DEPTH AT THE PROPERTY LINE BELOW THE GROUND ELEVATION FOR EACH HOUSE LATERAL ON THE GRADE SHEET.
- BEFORE WORK CAN BE STARTED, THE CONTRACTOR MUST OBTAIN A PERMIT TO EXCAVATE IN COUNTY STREETS FROM THE L.A. COUNTY ROAD DEPT., DISTRICT OFFICE NO. 1, AND PAY A FEE TO THE COUNTY ENGINEER. AT THE MALIBU REGIONAL OFFICE, TO COVER THE COST OF CONSTRUCTION INSPECTION AND RECORD PLANS.
- IF WORK IS TO BE DONE IN A STATE HIGHWAY, A PERMIT MUST BE OBTAINED FROM THE STATE OF CALIFORNIA, DIVISION OF HIGHWAYS, 130 SOUTH SPRING STREET, LOS ANGELES, CALIFORNIA.
- APPROVAL OF THIS PLAN BY THE COUNTY OF LOS ANGELES DOES NOT CONSTITUTE A REPRESENTATION AS TO THE ACCURACY OF THE LOCATION OF OR THE EXISTENCE OR NON-EXISTENCE OF ANY UNDERGROUND UTILITY PIPE, OR STRUCTURE WITHIN THE LIMITS OF THIS PROJECT. THIS NOTE APPLIES TO ALL PAGES.
- REFER TO SECTION 7-10.4.3 OF THE STANDARD SPECIFICATIONS, REGARDING SAFETY DEVICES.
- PRIOR TO ISSUING THE REQUIRE SEWER CONSTRUCTION PERMIT BY THE COUNTY ENGINEER, THE CONTRACTOR SHALL OBTAIN A PERMIT TO EXCAVATE FROM THE CALIFORNIA DIVISION OF INDUSTRIAL SAFETY.
- THE UNDERGROUND UTILITIES CO. WITHIN THE PROJECT ARE:
  - LAS VIRGENES MUNICIPAL WATER DISTRICT
  - SOUTHERN CALIFORNIA GAS COMPANY
  - SOUTHERN CALIFORNIA EDISON CO.

CONSTRUCTION NOTES:

- WORK SHALL BE CONSTRUCTED ACCORDING TO THE STANDARD SPECIFICATIONS FOR PUBLIC WORKS CONSTRUCTION (1978 EDITION) AND COUNTY ENGINEER SPECIAL PROVISIONS FOR THE CONSTRUCTION OF SANITARY SEWERS DATED MARCH 1, 1976 AND SHALL BE DESIGNATED ONLY IN THE PRESENCE OF THE COUNTY ENGINEER.
- THE CONTRACTOR SHALL NOTIFY THE DESIGNER DIVISION BY TELEPHONE, (818) 974-7388, AT LEAST TWENTY-FOUR HOURS BEFORE STARTING ANY WORK UNDER THIS CONTRACT.
- HOUSE LATERALS TO BE CONSTRUCTED WITH INVERTS AT PROPERTY LINE 6 FEET BELOW GROUND SURFACE EXCEPT AS NOTED. TYPE OR THE BRANCHES MAY BE USED FOR CONNECTIONS TO MAINLINE SEWERS EXCEPT AS NOTED.
- ALL STRUCTURES SHALL BE EITHER BRICK MANHOLES PER 5-36, EXCEPT AS NOTED.
- PROVIDE STAKES ON THE PROPERTY LINE OR PROPERTY LINES PRODUCED AT RIGHT ANGLES TO THE SEWER LINE AT THE CENTER LINE OF EACH MANHOLE.
- MANHOLE TOPS IN IMPROVED RIGHTS OF WAY TO BE LEVEL WITH FINISHED GRADE.
- VERIFIED CLAY PIPE JOINTS SHALL BE TYPE "D", "F", OR "G" PER STANDARD SPECIFICATIONS SECTION 308-2.
- IF A POWER POLE IS WITHIN THREE FEET OF THE SEWER, THE SEWER SHALL BE ENCASED, PER 5-33, CASE II, TWO FEET ON EACH SIDE FROM THE POINT OF INTERFERENCE.
- IF DURING THE COURSE OF CONSTRUCTION IT IS DETERMINED THAT THERE IS LESS THAN FOUR FEET OF COVER OVER THE TOP OF A MAIN LINE OR HOUSE LATERAL V.C.P. SEWER WHICH IS NOT INDICATED ON THE PLANS, THE PIPE SHALL BE ENCASED PER 5-33, CASE II UNLESS OTHERWISE APPROVED BY THE COUNTY ENGINEER.
- ALL JOINTS BETWEEN CAST IRON PIPE AND VERIFIED CLAY PIPE SHALL BE MADE WITH A RUBBER SLEEVE JOINT, TYPE "C" OR "D", (WITH BUSHING IF NECESSARY) PER STANDARD SPECIFICATIONS, SECTION 308-2.
- SEWERS TO BE TESTED FOR LEAKAGE PER SECTION 304-1.6 OF THE STANDARD SPECIFICATIONS AND SPECIAL PROVISIONS.
- RESURFACE ALL TRENCHES WITHIN PAVED AREAS TO MEET L.A. COUNTY ROAD DEPT. OR CALIFORNIA STATE HIGHWAY REQUIREMENTS IN ACCORDANCE WITH PERMITS.
- FULL COMPLIANCE WITH SECTION 306.1.3.8 OF THE SPECIAL PROVISIONS WILL BE REQUIRED FOR BACKFILL IN STREETS. CERTIFICATION OF BACKFILL COMPACTION AND SAND EQUIVALENTS BY A QUALIFIED, REGISTERED TESTING LABORATORY SHALL BE PROVIDED BY THE CONTRACTOR PRIOR TO THE ISSUANCE OF A CERTIFICATE OF PARTIAL ACCEPTANCE.
- 1/2" INDICATES HOUSE LATERALS TO BE CONSTRUCTED WITH A 1/4" RISE PER FOOT TO R/W LINE.

TO BE CONSTRUCTED IN  
BLUEBIRD DRIVE  
PRIVATE CONTRACT NO. 9250

W.S. 60  
2 SHEETS, 3 PAGES  
SCALE: VERT. 1" = 8'  
HORIZ. 1" = 40' APRIL, 1976  
PREPARED IN THE OFFICES OF  
HARMON RASNOW & ASSOC.

45860

BY: Boyd Beathorn  
REG. C. E. No. 15674

THE FOLLOWING LATEST REVISED STANDARD PLANS ON FILE IN THE OFFICE OF THE COUNTY ENGINEER SHALL APPLY IN THE CONSTRUCTION OF THIS PROJECT:

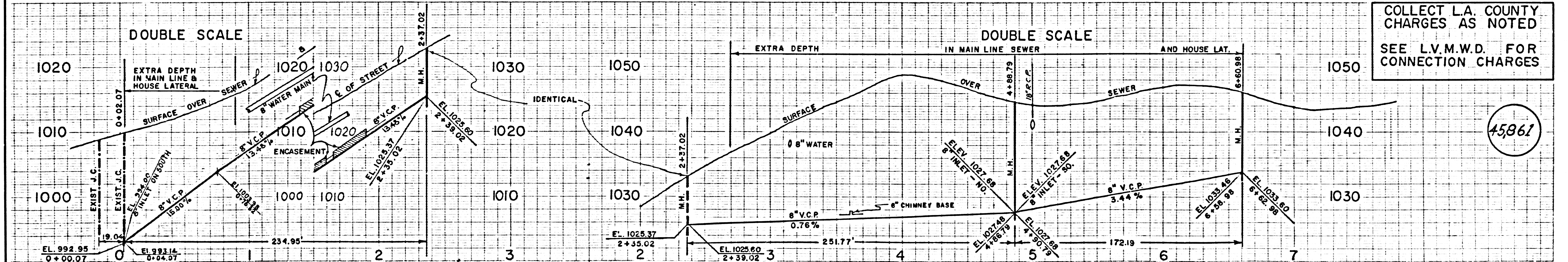
|   |      |
|---|------|
| MINIMUM PUBLIC SAFETY REQUIREMENTS      | 5-1  |
| BRICK MANHOLE                           | 5-2  |
| STANDARD MANHOLE STEP                   | 5-17 |
| BRIDGING FOR SEWER PIPE                 | 5-21 |
| CRADLING AND ENCASEMENT                 | 5-23 |
| TYPE OF THE SUPPORT                     | 5-26 |
| ALLOWABLE TRENCH WIDTHS                 | 5-28 |
| LOCKING MANHOLE FRAME AND COVER         | 5-33 |
| NON-REINFORCED PRECAST CONCRETE MANHOLE | 5-36 |
| CHIMNEY PIPE AND BASE                   | 5-37 |

COUNTY OF LOS ANGELES, CALIFORNIA  
JAMES T. ROSTRON, CH. DEPUTY COUNTY ENGINEER  
LAS VIRGENES MUNICIPAL WATER DISTRICT

APPROVED: *Amal K. Mulla* 5-20-76 REGIONAL ENGINEER (S) (S) (S)  
CHECKED: *Sheela Jones* 5-20-76 (S) (S) (S)  
REG. C. E. NO. 10166

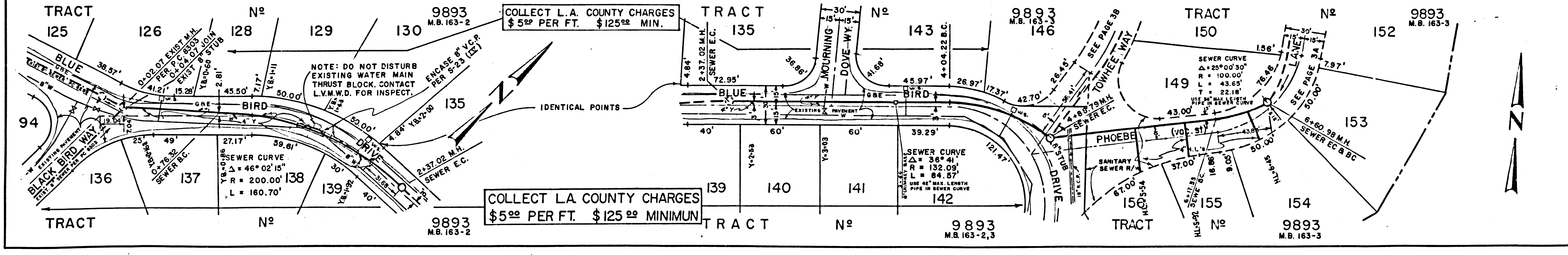
APPROVED: *H. W. Stokes* GEN. MNGR. - CH. ENGR.  
REG. C. E. NO. 9555

CALABASAS BLDG. DIST. 9.1 DATE J. N. 0358.01



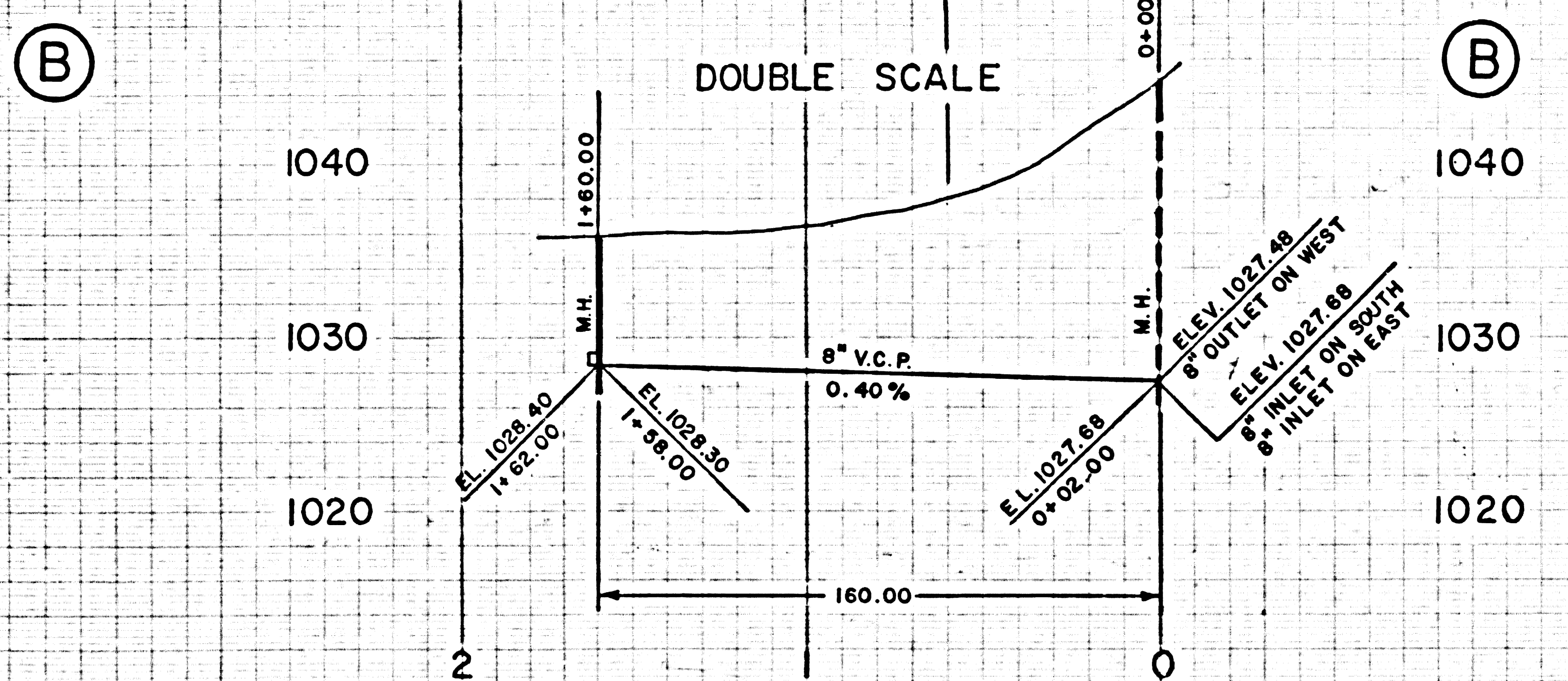
COLLECT L.A. COUNTY CHARGES AS NOTED  
SEE L.V.M.W.D. FOR CONNECTION CHARGES

45861

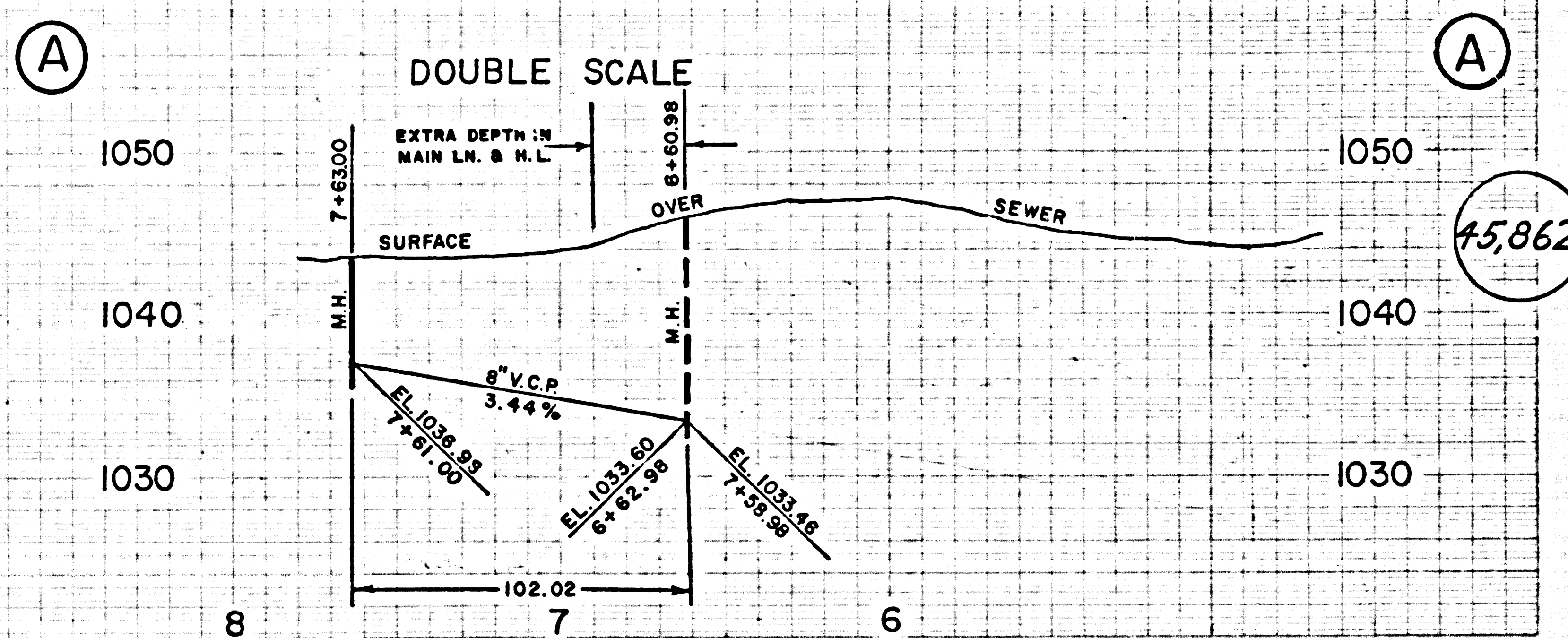


COLLECT L.A. COUNTY CHARGES \$5<sup>00</sup> PER FT. \$125<sup>00</sup> MIN.

COLLECT L.A. COUNTY CHARGES \$5<sup>00</sup> PER FT. \$125<sup>00</sup> MINIMUM



NO CHARGE FOR L.A. CO.  
SEE L.V.M.W.D. FOR  
CONNECTION CHARGES



45,862

