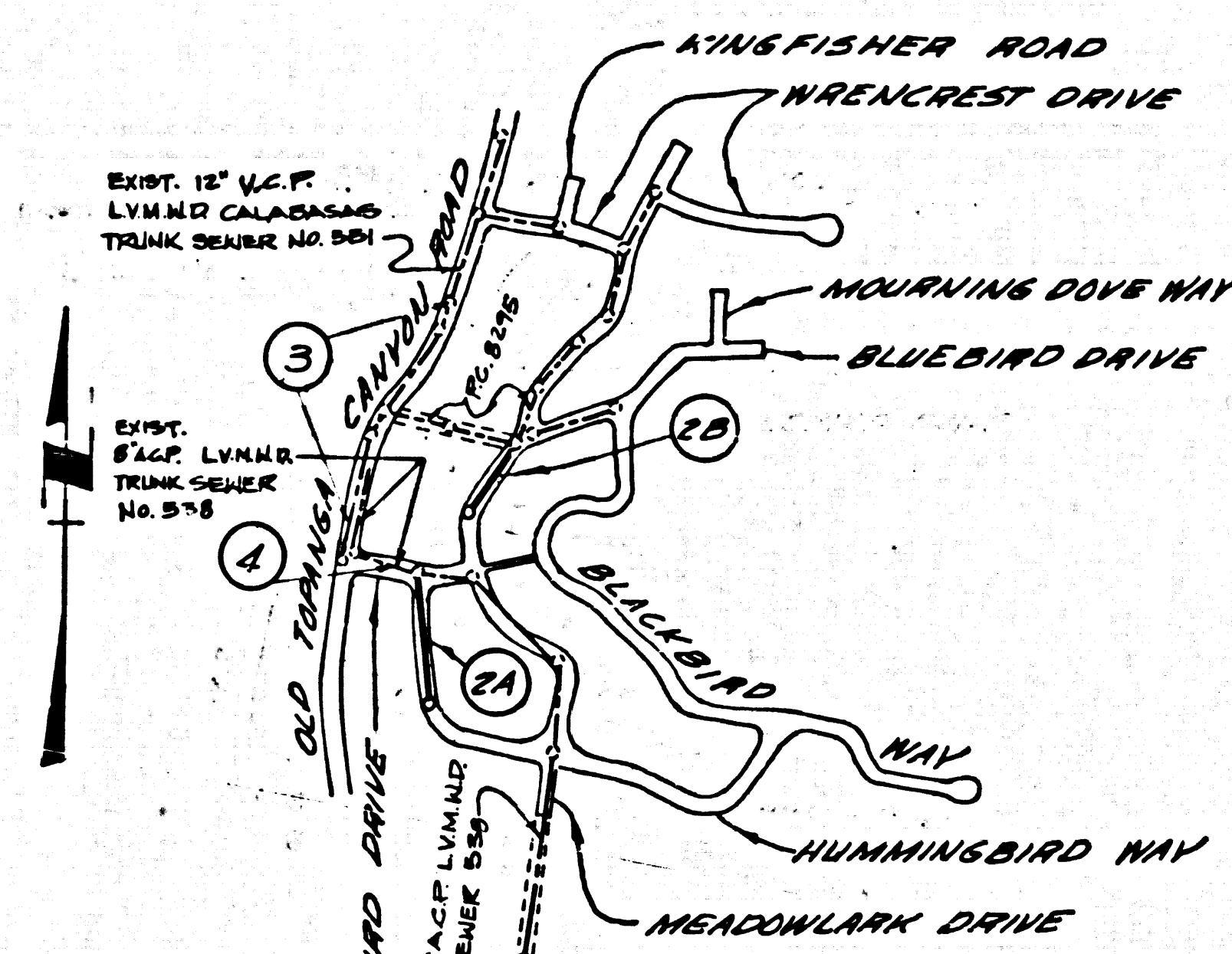


B.M. 9031 ELEV. 990.940
 R.D.B.M. Top in CB, 3 1/4" N., B.C.P.
 23 Ft. S. & 35 Ft. E. of Int. of Out.
 Topanga Canyon Road, Westcrest Drive.
 MALIBU QUAD. 19 72



INDEX MAP
 SCALE: 1"=500'
 P.C. 9252
 Figures in circles indicate
 page numbers.

REVISION No. 2 DATE 8-23-76
 DELETE LATERAL TO LOT 43
 APPROVED *Sheldon Jones* R.E. No. 19166

REVISION No. 1 DATE 6-30-74
 ADD LATERAL TO LOT 90.
 APPROVED *Sheldon Jones* R.E. No. 17166

GENERAL NOTES:

1. ELEVATIONS ARE IN FEET ABOVE U.S.C. & G.S. MEAN DATUM OF 1929.
2. NO EXCAVATION SHALL BE MADE IN THIS PLANE WITHOUT THE APPROVAL OF THE COUNTY ENGINEER.
3. NO REPRESENTATIVE OF THE COUNTY ENGINEER WILL SURVEY OR LAY OUT ANY PORTION OF THE WORK.
4. GRADES TO WHICH THIS IMPROVEMENT IS TO BE CONSTRUCTED ARE SHOWN ON PLANS AND PROFILES. GRADE POINTS FOR TOP OF CURBS, CENTER LINE OF STREETS, OR CENTER LINE OF ALLEYS ARE SHOWN BY CIRCLES ON PROFILES. AT ALL POINTS BETWEEN DESIGNATED POINTS THE GRADE SHALL BE ESTABLISHED SO AS TO CONFORM TO A STRAIGHT LINE BETWEEN SAID DESIGNATED POINTS.
5. THE PRIVATE ENGINEER SHALL FURNISH THE COUNTY ENGINEER WITH GRADE SHEETS AND STATIONING FOR ALL HOUSE LATERALS AND "C" OR "T" BRANCHES AND SHALL PROVIDE STAKES FOR THEM AT THEIR PROPER LOCATIONS WITH STATIONING PLANT-Y MARKERS. ALL HOUSE LATERALS SHALL BE CONSTRUCTED IN A STRAIGHT ALIGNMENT AT RIGHT ANGLES FROM THE MAIN LINE SEWER EXCEPT AS SHOWN ON THE PLANS. HOUSE LATERALS FROM CHIMNEYS SHALL NOT HAVE AN ANGLE OF LESS THAN 45° WITH THE MAIN LINE SEWER. ANY CHANGE IN ALIGNMENT SHALL BE REQUESTED IN WRITING BY THE PRIVATE ENGINEER.
6. THE PRIVATE ENGINEER SHALL FURNISH THE HOUSE LATERAL DEPTH AS THE PROPERTY LINE BELOW THE 6" OF CURB ELEVATION FOR EACH HOUSE LATERAL ON THE GRADE SHEET.
7. BEFORE WORK CAN BE STARTED, THE CONTRACTOR MUST OBTAIN A PERMIT TO EXCAVATE IN COUNTY STREETS FROM THE L.A. COUNTY ROAD DEPT., DISTRICT OFFICE NO. 5, AND PAY A FEE TO THE COUNTY ENGINEER, MALIBU DISTRICT REGIONAL OFFICE, TO COVER THE COST OF CONSTRUCTION INSPECTION AND RECORD PLANS.
8. IF WORK IS TO BE DONE IN A STATE HIGHWAY, A PERMIT MUST BE OBTAINED FROM THE STATE OF CALIFORNIA, DIVISION OF HIGHWAY, 120 SOUTH BRIND STREET, LOS ANGELES, CALIFORNIA.
9. APPROVAL OF THIS PLAN BY THE COUNTY OF LOS ANGELES DOES NOT CONSTITUTE A REPRESENTATION AS TO THE ACCURACY OF THE LOCATION OF OR THE EXISTENCE OR NON-EXISTENCE OF ANY UNDERGROUND UTILITY PIPE, OR STRUCTURE WITHIN THE LIMITS OF THIS PROJECT. THIS NOTE APPLIES TO ALL PAGES.
10. REFER TO SECTION 218.43 OF THE STANDARD SPECIFICATIONS, REGARDING SAFETY ORDS.
11. THE UNDERGROUND UTILITY COMPANIES WITHIN THE LIMITS OF THIS PROJECT ARE AS FOLLOWS:
 1. L.A. COUNTY WATER DEPARTMENT
 2. L.A. COUNTY GAS DEPARTMENT
 3. PACIFIC TELEPHONE COMPANY
 4. CALIFORNIA TELEVISION COMPANY
12. PRIOR TO OBTAINANCE OF THE REQUIRED ENGINEER CONSTRUCTION PERMIT BY THE COUNTY ENGINEER, THE CONTRACTOR SHALL OBTAIN A PERMIT TO EXCAVATE FROM THE STATE OF CALIFORNIA, DIVISION OF INDUSTRIAL SAFETY.

CONSTRUCTION NOTES:

1. WORK SHALL BE CONSTRUCTED ACCORDING TO THE STANDARD SPECIFICATIONS FOR PUBLIC WORKS CONSTRUCTION (1972 EDITION WITH 1974 SUPPLEMENTS) AND COUNTY ENGINEER SPECIAL PROVISIONS FOR THE CONSTRUCTION OF SANITARY SEWERS SATED MARCH 1974, AND SHALL BE PROSECUTED ONLY IN THE PRESENCE OF THE COUNTY ENGINEER.
2. THE CONTRACTOR SHALL NOTIFY THE DESIGN DIVISION BY TELEPHONE (213) 746-7465 AT LEAST TWENTY-FOUR HOURS BEFORE STARTING ANY WORK UNDER THIS CONTRACT.
3. HOUSE LATERALS TO BE CONSTRUCTED WITH BRIVETS AT PROPERTY LINE 4 FEET BELOW CURB GRADE EXCEPT AS NOTED.
4. WYE OR TE BRANCHES MAY BE USED FOR CONNECTIONS TO MAINLINE SEWERS EXCEPT AS NOTED.
5. ALL STRUCTURES SHALL BE EITHER BRICK MANHOLES PER S-2 OR PRECAST CONCRETE MANHOLES PER S-3A, EXCEPT AS NOTED.
6. PROFILE STAKES ON THE PROPERTY LINE OR PROPERTY LINES PROVIDED AT RIGHT ANGLES TO THE SEWER LINE AT THE CENTER LINE OF EACH MANHOLE.
7. MANHOLE TOPS IN IMPROVED RIGHTS OF WAY TO BE LEVEL WITH FINISHED GRADE.
8. VITRIFIED CLAY PIPE JOINTS SHALL BE TYPE "B", "C", OR "D" PER STANDARD SPECIFICATIONS SECTION 200-2.
9. IF A POWER POLE IS WITHIN THREE FEET OF THE SEWER, THE SEWER SHALL BE ENCASED, PER S-23, CASE II, TWO FEET ON EACH SIDE FROM THE POINT OF INTERFERENCE.
10. IF DURING THE COURSE OF CONSTRUCTION IT IS DETERMINED THAT THERE IS LESS THAN FOUR FEET OF COVER OVER THE TOP OF A MAIN LINE OR HOUSE LATERAL V.C.P. SEWER WHICH IS NOT INDICATED ON THE PLANS, THE PIPE SHALL BE ENCASED PER S-23, CASE II UNLESS OTHERWISE APPROVED BY THE COUNTY ENGINEER.
11. ALL JOINTS BETWEEN CAST IRON PIPE AND VITRIFIED CLAY PIPE SHALL BE MADE WITH A RUBBER SLEEVE JOINT, TYPE "C" OR "B", FIFTEEN BURNING IF NECESSARY PER STANDARD SPECIFICATIONS, SECTION 200-2.
12. SEWERS TO BE AS PREVIOUSLY THROWN FOR L.A. COUNTY PER S-23, CASE I-A, OR THIS CITY SPEC'S 4 SPECIAL PROVISIONS.
13. SURFACE OF TRENCHES WITHIN AVIATION AREAS TO MEET L.A. COUNTY ROAD DEPT. OR CALIFORNIA STATE HIGHWAY REQUIREMENTS IN ACCORDANCE WITH PERMITS.
14. FULL COMPLIANCE WITH SECTION 200-13.03 OF THE SPECIAL PROVISIONS WILL BE REQUIRED FOR BACKFILL IN STREETS. CERTIFICATION OF BACKFILL CONACTION AND SAND EQUIVALENTS BY A QUALIFIED, REGISTERED TESTING LABORATORY SHALL BE PROVIDED BY THE PERMITTEE PRIOR TO THE ISSUANCE OF A CERTIFICATE OF PARTIAL ACCEPTANCE.

TO BE CONSTRUCTED IN
**MEADOWLARK DRIVE
 AND OTHER R/W'S
 PRIVATE CONTRACT NO. 9252**

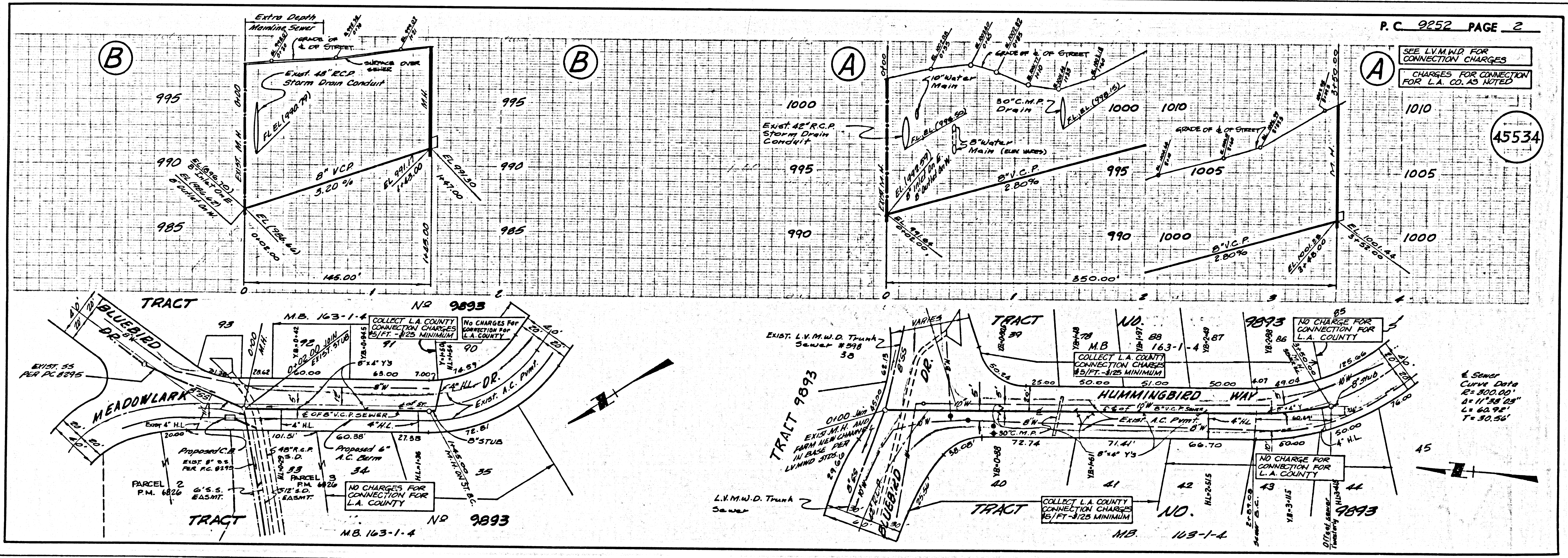
W.S. 60
 2 SHEETS, 4 PAGES
 SCALE: VERT. 1"=4'-0" HORIZ. 1"=40'-0" FEB., 1976
 PREPARED IN THE OFFICES OF
PACE ENGINEERING INC.
 12517 Chandler Blvd.
 Van Nuys, Calif. 91407
 BY: *Sheldon Jones* R.E. No. 19166
 REG. C.E. No. 13165

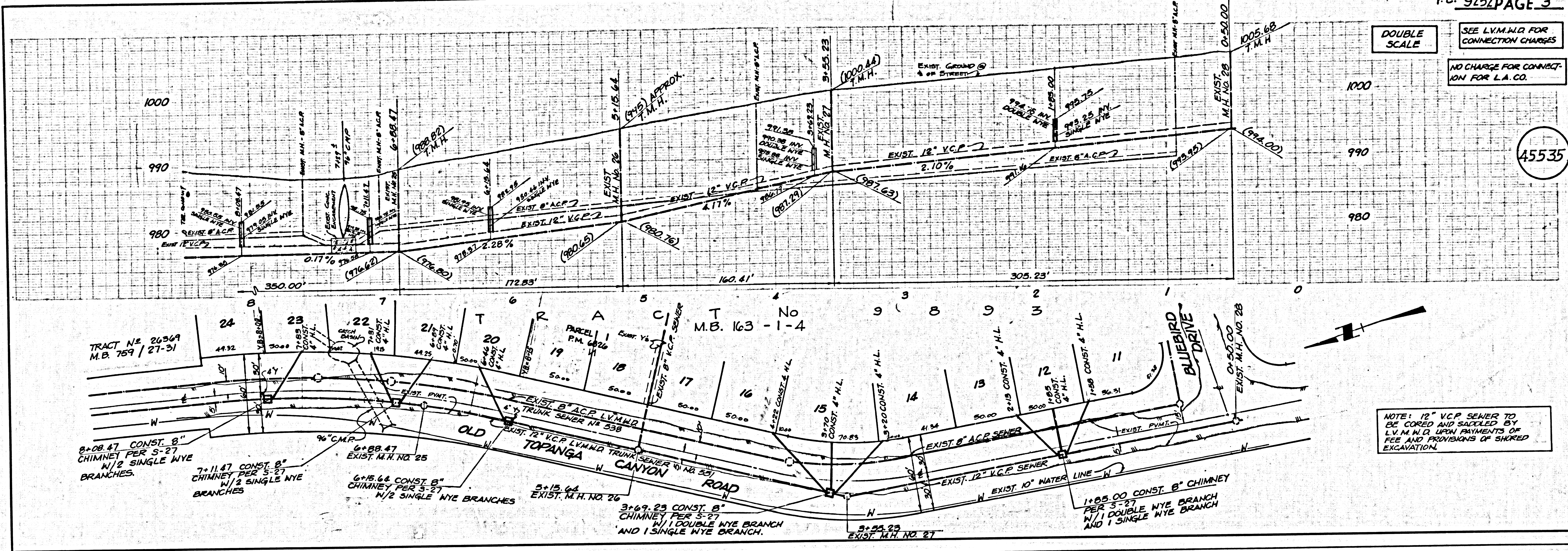
45533

THE FOLLOWING LATEST REVISED STANDARD PLANS ON FILE IN THE OFFICE OF THE COUNTY ENGINEER SHALL APPLY IN THE CONSTRUCTION OF THIS PROJECT.

1. MINIMUM PUBLIC SAFETY REQUIREMENTS	S-1
2. BRICK MANHOLE	S-2
3. STANDARD MANHOLE SET	S-3
4. BRIDGING FOR SEWER PIPE	S-4
5. CLEARING AND BRACEMANT	S-5
6. WYE OR TE BRANCH	S-6
7. ALLOWABLE TRENCH WIDTHS	S-7
8. LOCKING MANHOLE FRAME AND COVER	S-8
9. NON-REINFORCED PRECAST CONCRETE MANHOLE	S-9
10. CHIMNEY PIPE AND BRACK	S-10

COUNTY OF LOS ANGELES, CALIFORNIA
 JAMES T. ROSTROM, CHIEF DEPUTY COUNTY ENGINEER LAS VIRGENES MUNICIPAL WATER DISTRICT
 APPROVED: *Sheldon Jones* 6-3-76 ROSTROM
 COUNTY ENGINEER GENERAL MANAGER DATE 6-17-76
 REG. C.E. NO. 13165
 CHECKED: *Sheldon Jones* 6-3-76
 REG. C.E. NO. 13165
 CALABASAS BLDG. DIST. 31 I.N. 0358.01





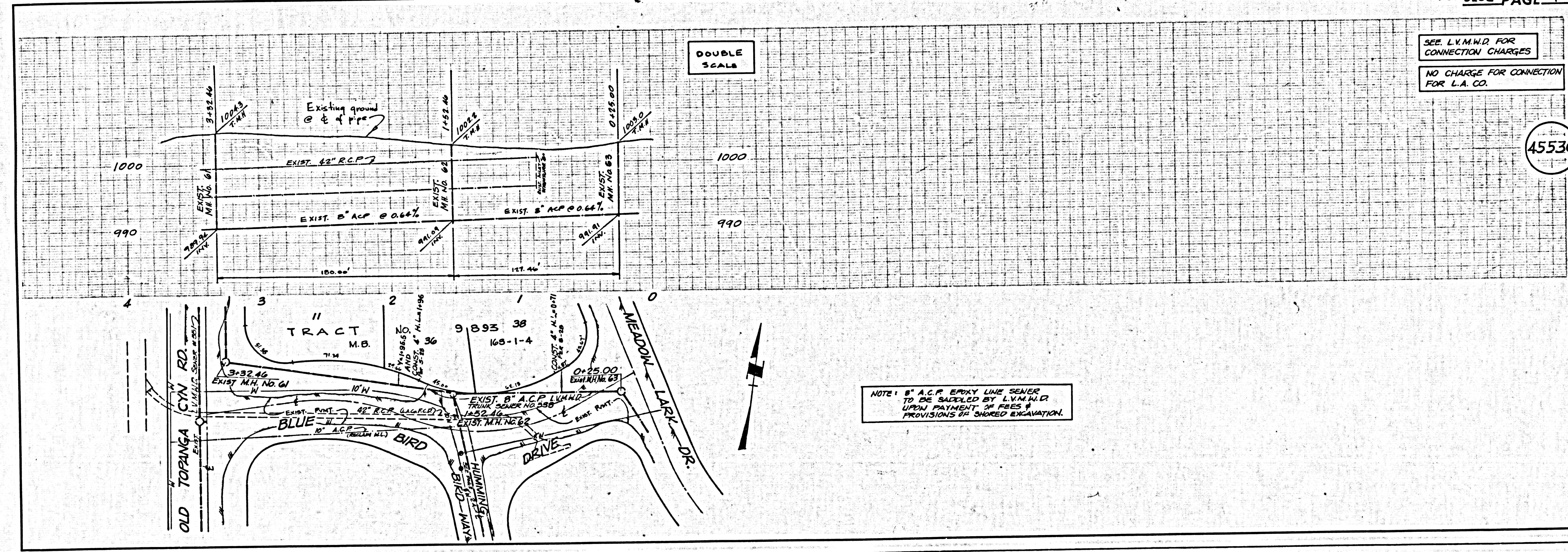
DOUBLE SCALE

SEE L.V.M.N.D. FOR CONNECTION CHARGES

NO CHARGE FOR CONNECTION FOR L.A. CO.

45535

NOTE: 12" V.C.P. SEWER TO BE CORED AND SADDLED BY L.V.M.N.D. UPON PAYMENTS OF FEE AND PROVISIONS OF SHORED EXCAVATION.



DOUBLE SCALE

SEE L.V.M.N.D. FOR CONNECTION CHARGES

NO CHARGE FOR CONNECTION FOR L.A. CO.

45536

NOTE: 8" A.C.P. EMPLY LINE SEWER TO BE SADDLED BY L.V.M.N.D. UPON PAYMENT OF FEE & PROVISIONS FOR SHORED EXCAVATION.