

B.M. BY 626 ELEV. 211.292

L+T W. END HDWL. ON S. SIDE UPRR
E. SIDE PIONEER BLVD.

WHITTIER QUAD. 1965

REVISION No. 5 DEC. 21, 1976

PAGE NO. 2 - LOWER MAINLINE AND TOP OF MANHOLE
BETWEEN STA. 0+30.00 AND 2+43.71

Robert R. Flores
APPROVED: Robert R. Flores R.C.E. No. 11343
OFFICE OF COUNTY ENGINEER

WHITTIER BLDG. DIST. NO. 11

PROFILE ALIGNMENT AND GRADE OF

SANITARY SEWERS

TO BE CONSTRUCTED IN

TRACT NO. 28664

PRIVATE CONTRACT NO. 9258

P.C. 9258

PAGE 1

W.S. 37

1 SHEET ; 2 PAGES

SCALE: VERT. 1"=4' HORIZ. 1"=40'

JUNE, 1968

PREPARED IN THE OFFICES OF

KEMMERER ENGR. CO. INC.

6705 SO. PRINTER AVE. WHITTIER CALIF.

By: Robert R. Flores
REG. C. E. NO. 11343

15,698

FOR LEGEND SEE PLAN NO. S-1

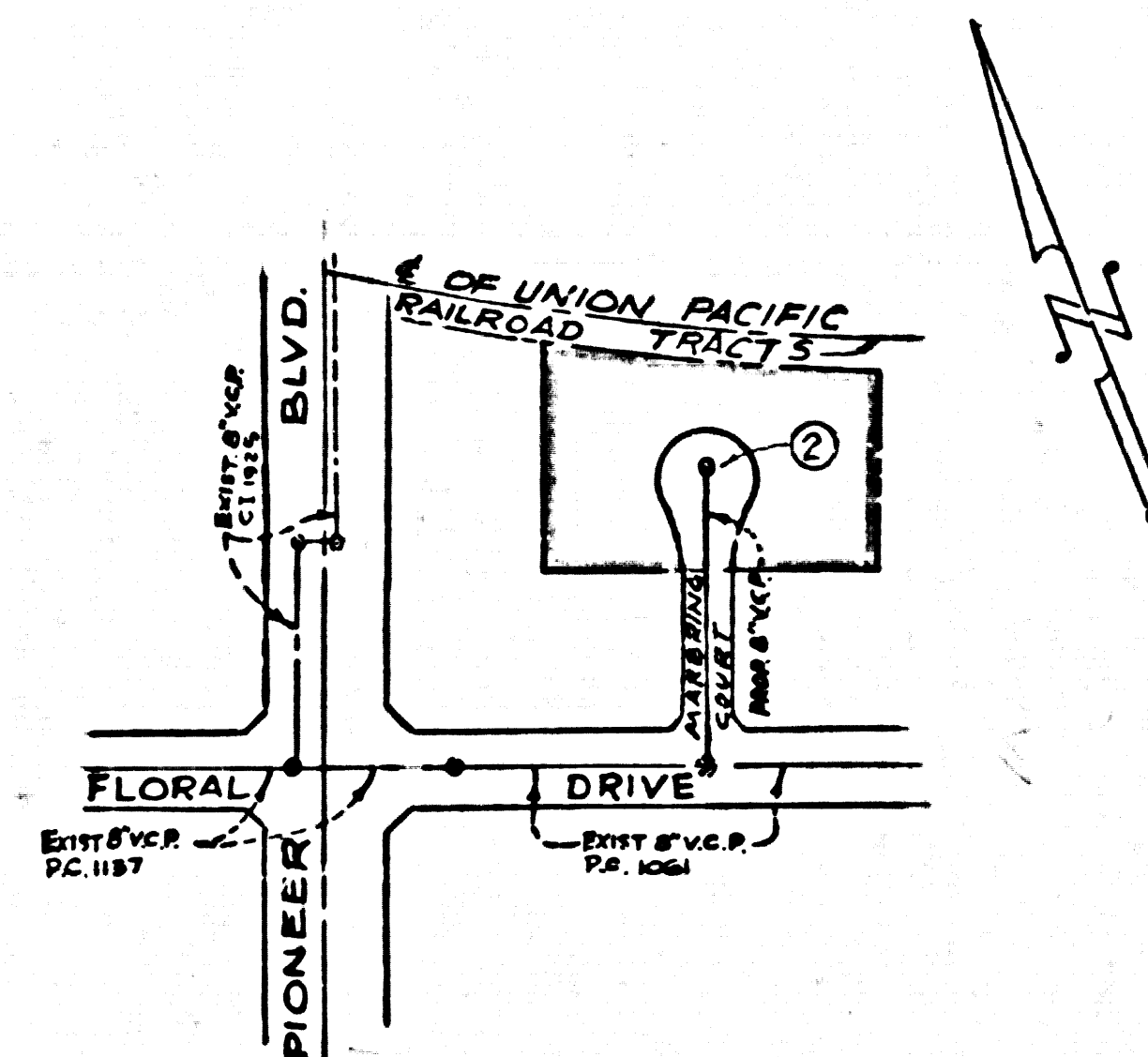
THE FOLLOWING COUNTY ENGINEER STANDARD PLAN APPLY TO THIS PROJECT

LEGEND	8-1
MINIMUM PUBLIC SAFETY REQUIREMENT	8-2
BRICK MANHOLE	8-3
NON-REINFORCED PRECAST CONCRETE MANHOLE	8-3A
LOCKING MANHOLE FRAME AND COVER	8-35
STANDARD MANHOLE STEP	8-17
BEDDING FOR SEWER PIPE	8-21
CRADLING AND ENCASEMENT	8-23
WYE OR TEE SUPPORT	8-26
ALLOWABLE TRENCH WIDTHS	8-33

REVISION NO. 1 JULY 2, 1970

1. PAGE 1 - ADJUST STD. DWG. NO. 7
2. PAGE 2 - ADJUST LOT LINE BETWEEN LOT 4 & 5

Robert R. Flores
APPROVED: Robert R. Flores R.C.E. No. 11343
OFFICE OF COUNTY ENGR. R.C.E. No. 11343



KEY MAP
TRACT No. 28664
SCALE: 1" = 200'
P.C. 9258

NOTE: HOUSE LATERAL FOR LOT #8 WAS
CONST. UNDER C. I. 1925
HOUSE LATERAL FOR LOT #7 WAS
CONST. UNDER PERMIT # 8727: 6-17-69

REVISION No. 2 MAY 3, 1976

PAGE 1: REVISE KEY MAP
PAGE 2: REVISE PROPERTY LINE &
LOT DIMENSIONS
Robert R. Flores
APPROVED: Robert R. Flores R.C.E. No. 11343
OFFICE OF COUNTY ENGR. R.C.E. No. 11343

- NOTES:
- NO STAKES ON THE PROPERTY LINE OR PROPERTY LINES PRODUCED AT RIGHT ANGLES TO THE SEWER LINE AT THE CENTER LINE OF EACH MANHOLE.
 - NO REPRESENTATIVE OF THE COUNTY ENGINEER WILL SURVEY OR LAY OUT ANY PORTION OF THE WORK.
 - THE PRIVATE ENGINEER SHALL FURNISH THE COUNTY ENGINEER WITH GRADE SHEETS AND STATIONING FOR ALL HOUSE LATERALS AND "T" OR "Y" BRANCHES AND SHALL PROVIDE STAKES FOR THEM AT THEIR PROPER LOCATIONS WITH STATIONING PLAINLY MARKED. ALL HOUSE LATERALS SHALL BE CONSTRUCTED IN A STRAIGHT ALIGNMENT AT RIGHT ANGLES FROM THE MAIN LINE SEWER EXCEPT AS SHOWN ON THE PLANS. HOUSE LATERALS FROM CHIMNEYS SHALL NOT HAVE AN ANGLE OF LESS THAN 45° WITH THE MAIN LINE SEWER. ANY CHANGE IN ALIGNMENT SHALL BE REQUESTED IN WRITING BY THE PRIVATE ENGINEER.
 - THE PRIVATE ENGINEER SHALL FURNISH THE HOUSE LATERAL DEPTH AT THE PROPERTY LINE BELOW THE TOP OF CURB ELEVATION FOR EACH HOUSE LATERAL ON THE GRADE SHEET.
 - NO REVISIONS SHALL BE MADE IN THESE PLANS WITHOUT THE APPROVAL OF THE COUNTY ENGINEER.
 - THE CONTRACTOR SHALL NOTIFY THE DIVISION OF TELEPHONE (213) 866-7011 AT LEAST TWENTY-FOUR HOURS BEFORE STARTING ANY WORK UNDER THIS CONTRACT.
 - ALL STRUCTURES SHALL BE EITHER BRICK MANHOLES PER S-3 OR PRECAST CONCRETE MANHOLES PER S-3A.
 - USE STANDARD MANHOLE FRAMES AND COVERS, S-36, EXCEPT AS NOTED.
 - MANHOLE TOPS IN UNIMPROVED RIGHTS-OF-WAY TO BE SIX INCHES ABOVE FINISHED GRADE.
 - USE EXTRA STRENGTH PIPE. ALL PIPE IS STANDARD DEPTH EXCEPT AS NOTED.
 - USE MECHANICAL COMPRESSION JOINTS FOR ALL V.C.P. JOINTS PER SPEC. SEC. 208.2, TYPE D, F, OR G.
 - IF A POWER POLE IS WITHIN THREE FEET OF THE SEWER, THE SEWER SHALL BE ENCASED, PER S-23, TWO FEET ON EACH SIDE FROM THE POINT OF INTERFERENCE.
 - IF DURING THE COURSE OF CONSTRUCTION IT IS DETERMINED THAT THERE IS LESS THAN FOUR FEET OF COVER OVER THE TOP OF A MAIN LINE OR HOUSE LATERAL V.C.P. SEWER WHICH IS NOT INDICATED ON THE PLANS, THE PIPE SHALL BE ENCASED PER S-23, UNLESS OTHERWISE APPROVED BY THE COUNTY ENGINEER.
 - HOUSE LATERALS TO BE CONSTRUCTED WITH INVERTS AT PROPERTY LINE 8 FEET BELOW CURB GRADE.
 - RESURFACE ALL TRENCHES WITHIN PAVED AREAS TO MEET L.A. COUNTY ROAD DEPT. OR CALIFORNIA STATE HIGHWAY REQUIREMENTS IN ACCORDANCE WITH PERMITS.
 - SEWERS TO BE TESTED FOR LEAKAGE PER SECTION 306.1.4 OF THE STANDARD SPECIFICATIONS AND SPECIAL PROVISIONS.
 - REFER TO SECTION 7-10-41 OF THE STD. SPEC'S REGARDING SAFETY REQUIREMENTS.
 - SPECIAL BACKFILL:
 - BACKFILL TRENCH AND REPLACE OTHER EARTH REMOVED SO AS TO ACHIEVE THE NATURAL OR FINISHED GRADES AND SLOPES SHOWN ON THE GRADING PLAN APPROVED FOR THIS TRACT BY THE BUILDING AND SAFETY DIVISION.
 - ALL BACKFILL AND EARTH REPLACED SHALL BE COMPACTED TO A MINIMUM OF 90% OF MAXIMUM DENSITY PER A.S.T.M. STANDARD METHOD OF TEST D998-57 AS MODIFIED. ACCEPTABLE CERTIFICATION OF SUCH COMPACTION SHALL BE SUBMITTED TO THE DESIGN DIVISION.
 - BEFORE OBTAINING SEWER CONSTRUCTION INSPECTION PERMIT THE CONTRACTOR SHALL OBTAIN A STATE OF CALIFORNIA DEPARTMENT OF INDUSTRIAL SAFETY PERMIT TO EXCAVATE.
- County Sanitation Districts shall be notified prior to the following so that required inspection can be made (Phone 837-1025 or 400-8097)
- Acceptance of the project.

COLLECT CHARGES AS INDICATED

No connections for the disposal of industrial wastes shall be made to sewers shown on these drawings without written permission from the Chief Engineer and General Manager of the County Sanitation Districts.

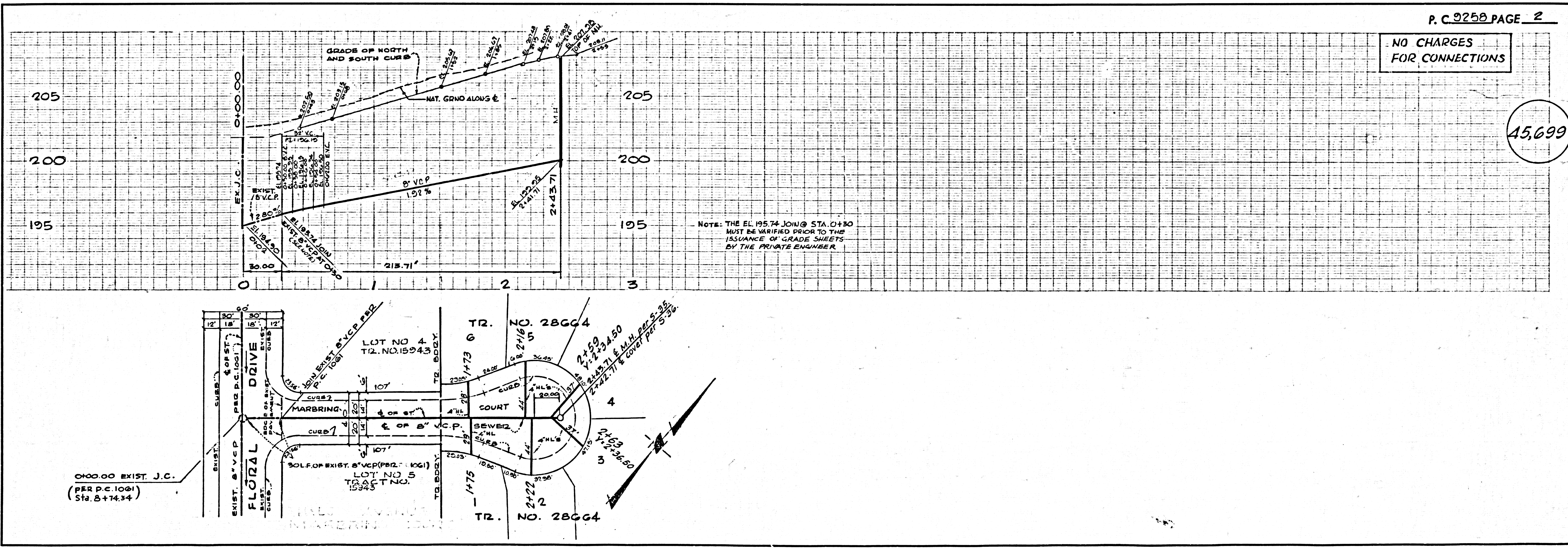
COUNTY OF LOS ANGELES, CALIFORNIA
COUNTY ENGINEER
J. D. PARKHURST, CHIEF ENGINEER
CO. SAN DIST. NO. 11

APPROVED BY: *Robert R. Flores*
REGIONAL ENGINEER
DATE: 5-12-76

APPROVED BY: *J. D. Parkhurst*
OFFICE ENGINEER

CHECKED BY: *K. C. Murphy*
REG. C.E. NO. 15144
DATE: 5-12-76

J. N. 0250.02



P.C. 9258 PAGE 2

NO CHARGES FOR CONNECTIONS

15,699

NOTE: THE EL. 195.74 JOIN @ STA. 0+30 MUST BE VERIFIED PRIOR TO THE ISSUANCE OF GRADE SHEETS BY THE PRIVATE ENGINEER