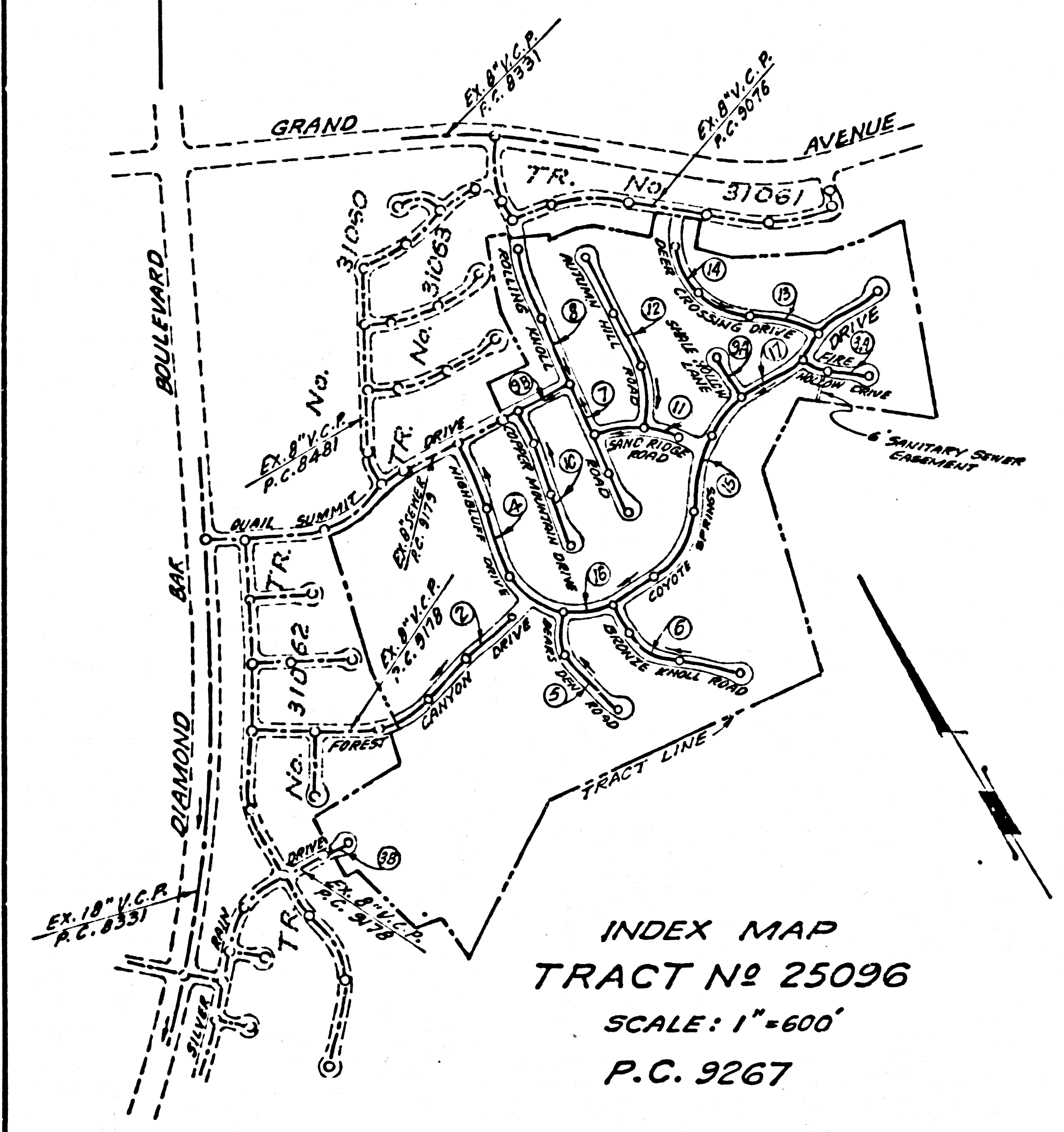


CONSTRUCTED IN
TRACT No 25096
PRIVATE CONTRACT NO. 9267

W.S. 39-C4
9 SHEETS, 17 PAGES
SCALE: VERT. 1"=8'
HORIZ. 1"=40'
APRIL, 1976
PREPARED IN THE OFFICES OF
E.L. PEARSON AND ASSOCIATES
BY: *Frederick J. Wainwright*
REG. C.E. No. 17332

45,980

B.M. B.G. 3911 ELEV. 895.457
L. 57' IN E. END OF C.B. 44' S. AND 96'
W. 1/2 INT. GRAND AVE. & DIAMOND
BAR BLVD. MKD. B.M. C-12
OTTERBEIN 1970 QUAD YEAR ADJ. 1970



NO CONNECTION FOR THE DISPOSAL OF INDUSTRIAL WASTES SHALL BE MADE TO SEWERS SHOWN ON THESE DRAWINGS UNTIL A PERMIT FOR INDUSTRIAL WASTE WATER DISCHARGE HAS BEEN ISSUED BY THE SANITATION DISTRICTS FOR SAID CONNECTION.

ISSUE HOUSE CONNECTION PERMITS FOR LOTS 115 & 116 PER P.C. 9076.
ISSUE HOUSE CONNECTION PERMIT FOR LOT 284 PER P.C. 8481

NOTE No. 16:
BEFORE ANY EXCAVATION IS DONE NEAR THE EXISTING 30" HIGH PRESSURE GAS LINE SHOWN ON PAGES 5 AND 6 IT SHALL BE THE CONTRACTOR'S RESPONSIBILITY TO GIVE THE SOUTHERN CALIFORNIA GAS CO. AT LEAST 48 HOURS NOTICE. TEL. 529-2889, BREKA.

NOTICE TO CONTRACTOR
THE EXISTENCE AND LOCATION OF ANY UNDERGROUND UTILITY PIPES OR STRUCTURES SHOWN ON THESE PLANS ARE OBTAINED BY A SEARCH OF THE AVAILABLE RECORDS. TO THE BEST OF MY KNOWLEDGE THERE ARE NO EXISTING UTILITIES EXCEPT AS SHOWN ON THESE PLANS. THE CONTRACTOR IS REQUIRED TO TAKE THE PRECAUTIONARY MEASURES TO PROTECT THE UTILITY LINES SHOWN AND ANY OTHER LINES NOT RECORDED OR NOT SHOWN ON THESE PLANS.

Frederick J. Wainwright
FREDERICK WAINWRIGHT P.E. C.E. 17332

GENERAL NOTES:

- 1. ELEVATIONS ARE IN FEET ABOVE U.S.C. & G.S. SEA LEVEL DATUM OF 1929.
- 2. NO REVISIONS SHALL BE MADE IN THESE PLANS WITHOUT THE APPROVAL OF THE COUNTY ENGINEER.
- 3. NO REPRESENTATIVE OF THE COUNTY ENGINEER WILL SURVEY OR LAY OUT ANY PORTION OF THE WORK.
- 4. GRADES TO WHICH THIS IMPROVEMENT IS TO BE CONSTRUCTED ARE SHOWN ON PLANS AND PROFILES. GRADE POINTS FOR TOP OF CURBS, CENTER LINE OF STREETS, OR CENTER LINE OF ALLEYS ARE SHOWN BY CIRCLES ON PROFILES. AT ALL POINTS BETWEEN DESIGNATED POINTS THE GRADE SHALL BE ESTABLISHED SO AS TO CONFORM TO A STRAIGHT LINE DRAWN BETWEEN SAID DESIGNATED POINTS.
- 5. THE PRIVATE ENGINEER SHALL FURNISH THE COUNTY ENGINEER WITH GRADE SHEETS AND STATIONING FOR ALL HOUSE LATERALS AND "T" OR "Y" BRANCHES AND SHALL PROVIDE STAKES FOR THEM AT THEIR PROPER LOCATIONS WITH STATIONING PLAINLY MARKED. ALL HOUSE LATERALS SHALL BE CONSTRUCTED IN A STRAIGHT ALIGNMENT AT RIGHT ANGLES FROM THE MAIN LINE SEWER EXCEPT AS SHOWN ON THE PLANS. HOUSE LATERALS FROM CHIMNEYS SHALL NOT HAVE AN ANGLE OF LESS THAN 45° WITH THE MAIN LINE SEWER. ANY CHANGE IN ALIGNMENT SHALL BE REQUESTED IN WRITING BY THE PRIVATE ENGINEER.
- 6. THE PRIVATE ENGINEER SHALL FURNISH THE HOUSE LATERAL DEPTH AT THE PROPERTY LINE BELOW THE TOP OF CURB ELEVATION FOR EACH HOUSE LATERAL ON THE GRADE SHEET.
- 7. BEFORE WORK CAN BE STARTED, THE CONTRACTOR MUST OBTAIN A PERMIT TO EXCAVATE IN COUNTY STREETS FROM THE L.A. COUNTY ROAD DEPT., DISTRICT OFFICE NO. 1, AND PAY A FEE TO THE COUNTY ENGINEER, 201 EAST, BOHITA AVENUE, SAN DIMAS REGIONAL OFFICE TO COVER THE COST OF CONSTRUCTION INSPECTION AND RECORD PLANS.
- 8. IF WORK IS TO BE DONE IN A STATE HIGHWAY, A PERMIT MUST BE OBTAINED FROM THE STATE OF CALIFORNIA, DIVISION OF HIGHWAYS, 138 SOUTH SPRING STREET, LOS ANGELES, CALIFORNIA.
- 9. APPROVAL OF THIS PLAN BY THE COUNTY OF LOS ANGELES DOES NOT CONSTITUTE A REPRESENTATION AS TO THE ACCURACY OF THE LOCATION OF OR THE EXISTENCE OR NON-EXISTENCE OF ANY UNDERGROUND UTILITY PIPE, OR STRUCTURE WITHIN THE LIMITS OF THIS PROJECT. THIS NOTE APPLIES TO ALL PAGES.
- 10. REFER TO SECTION 7-10.4.1 OF THE STANDARD SPECIFICATIONS, REGARDING SAFETY ORDERS.
- 11. **(11)** INDICATES HOUSE LATERAL SHALL BE CONSTRUCTED WITH 16" RISE PER FOOT TO PROPERTY LINE.
BEFORE BREAKING INTO OR CONSTRUCTION ON A COUNTY SANITATION DISTRICT SEWER AND PRIOR TO FINAL ACCEPTANCE OF THE PROJECT SANITATION DISTRICT INSPECTOR SHALL BE NOTIFIED BY PHONE 962-8605, SO THAT REQUIRED INSPECTION CAN BE MADE.

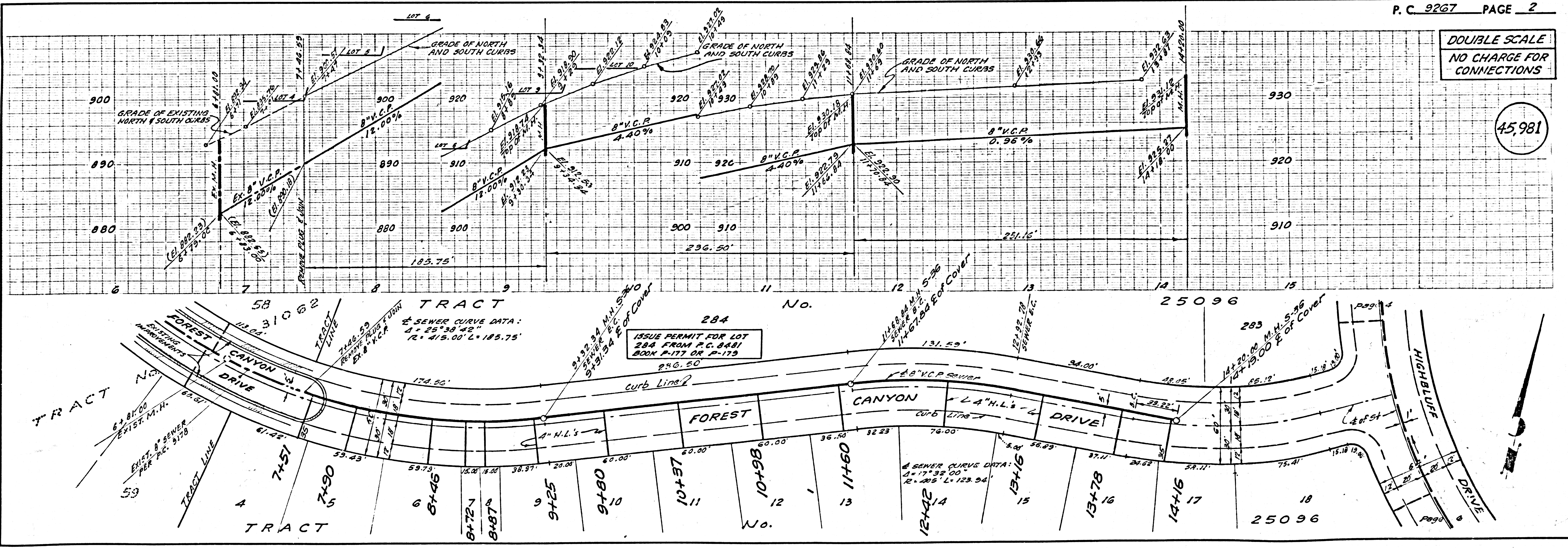
CONSTRUCTION NOTES:

- 1. WORK SHALL BE CONSTRUCTED ACCORDING TO THE STANDARD SPECIFICATIONS FOR PUBLIC WORKS CONSTRUCTION 1972 EDITION WITH 1974 SUPPLEMENTS AND COUNTY ENGINEER SPECIAL PROVISIONS FOR THE CONSTRUCTION OF SANITARY SEWERS DATED 1/20/75. L. 1223 AND SHALL BE PROTECTED DURING THE PRESENCE OF THE COUNTY ENGINEER.
- 2. THE CONTRACTOR SHALL NOTIFY THE DESIGN DIVISION BY TELEPHONE, (213) 244-7588 AT LEAST TWENTY-FOUR HOURS BEFORE STARTING ANY WORK UNDER THIS CONTRACT.
- 3. HOUSE LATERALS TO BE CONSTRUCTED WITH INVERTS AT PROPOSED LINE 6 FEET BELOW CURB GRADE EXCEPT AS NOTED.
- 4. WYE OR TEE BRANCHES MAY BE USED FOR CONNECTIONS TO MAINLINE SEWERS EXCEPT AS NOTED.
- 5. ALL STRUCTURES SHALL BE EITHER BRICK MANHOLES PER 8 OR PRECAST CONCRETE MANHOLES PER 8-24, EXCEPT AS NOTED.
- 6. PROVIDE STAKES ON THE PROPERTY LINE OR PROPERTY LINES PRODUCED AT RIGHT ANGLES TO THE SEWER LINE AT THE CENTER LINE OF EACH MANHOLE.
- 7. MANHOLE TOPS IN UNIMPROVED RIGHTS OF WAY TO BE SIX INCHES ABOVE FINISHED GRADE.
- 8. VITRIFIED CLAY PIPE JOINTS SHALL BE TYPE "B", "F", OR "G" PER STANDARD SPECIFICATIONS SECTION 308-2.
- 9. IF A POWER POLE IS WITHIN THREE FEET OF THE SEWER, THE SEWER SHALL BE ENCASED, PER 8-23, CASE II, TWO FEET ON EACH SIDE FROM THE POINT OF INTERFERENCE.
- 10. DURING THE COURSE OF CONSTRUCTION IT IS DETERMINED THAT THERE IS LESS THAN FOUR FEET OF COVER OVER THE TOP OF A MAIN LINE OR HOUSE LATERAL V.C.P. SEWER WHICH IS NOT INDICATED ON THE PLANS, THE PIPE SHALL BE ENCASED PER 8-23, CASE II UNLESS OTHERWISE APPROVED BY THE COUNTY ENGINEER.
- 11. ALL JOINTS BETWEEN CAST IRON PIPE AND VITRIFIED CLAY PIPE SHALL BE MADE WITH A RUBBER SLEEVE JOINT, TYPE "C" OR "B", WITH BUSHING IF NECESSARY PER STANDARD SPECIFICATIONS, SECTION 308-2.
- 12. SEWERS TO BE TESTED FOR LEAKAGE PER SECTION 304-1.6 OF THE STANDARD SPECIFICATIONS AND SPECIAL PROVISIONS.
- 13. RESURFACE ALL TRENCHES WITHIN PAVED AREAS TO MEET L.A. COUNTY ROAD DEPT. OR CALIFORNIA STATE HIGHWAY REQUIREMENTS IN ACCORDANCE WITH PERMITS.
- 14. FULL COMPLIANCE WITH SECTION 308-1.3 OF THE SPECIAL PROVISIONS WILL BE REQUIRED FOR BACKFILL IN STREETS. CERTIFICATION OF BACKFILL COMPACTION AND SAND EQUIVALENTS BY A QUALIFIED, REGISTERED TESTING LABORATORY SHALL BE PROVIDED BY THE PERMITTEE PRIOR TO THE ISSUANCE OF A CERTIFICATE OF PARTIAL ACCEPTANCE.
- 15. PRIOR TO ISSUANCE OF THE REQUIRED SEWER CONSTRUCTION PERMIT BY THE COUNTY ENGINEER, THE CONTRACTOR SHALL OBTAIN A PERMIT TO EXCAVATE FROM THE STATE OF CALIFORNIA, DIVISION OF INDUSTRIAL SAFETY.

THE FOLLOWING LATEST REVISED STANDARD PLANS ON FILE IN THE OFFICE OF THE COUNTY ENGINEER SHALL APPLY IN THE CONSTRUCTION OF THIS PROJECT.

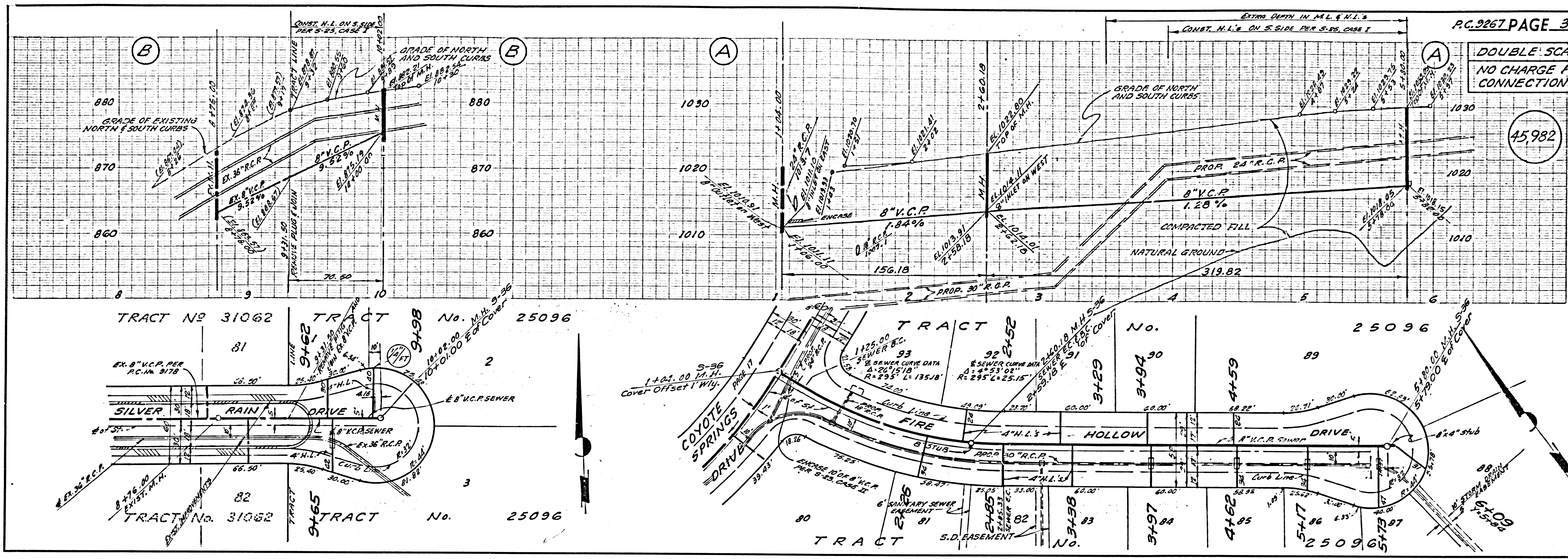
LEGEND	8-1
MINIMUM PUBLIC SAFETY REQUIREMENTS	8-2
BRICK MANHOLE	8-3
STANDARD MANHOLE STEP	8-17
BEDDING FOR SEWER PIPE	8-21
CRADLING AND ENCASEMENT	8-23
WYE OR TEE SUPPORT	8-24
ALLOWABLE TRENCH WIDTHS	8-25
LOCKING MANHOLE FRAME AND COVER	8-28
NON-REINFORCED PRECAST CONCRETE MANHOLE	8-29

COUNTY OF LOS ANGELES, CALIFORNIA
DEPT. OF COUNTY ENGR. JOHN D. PARKHURST, CHIEF ENGINEER
SAN DIMAS REGIONAL OFFICE
APPROVED: *B.T. Worthington* SAN DIMAS REGIONAL ENGINEER
APPROVED: *Frederick J. Wainwright* P.E. C.E. 17332
CHECKED: *Thomas E. Sisk* 1/15/76 DATE
REG. C.E. NO. 19156
SAN DIMAS BLDG. DIST. 10 J.N. 0250.02



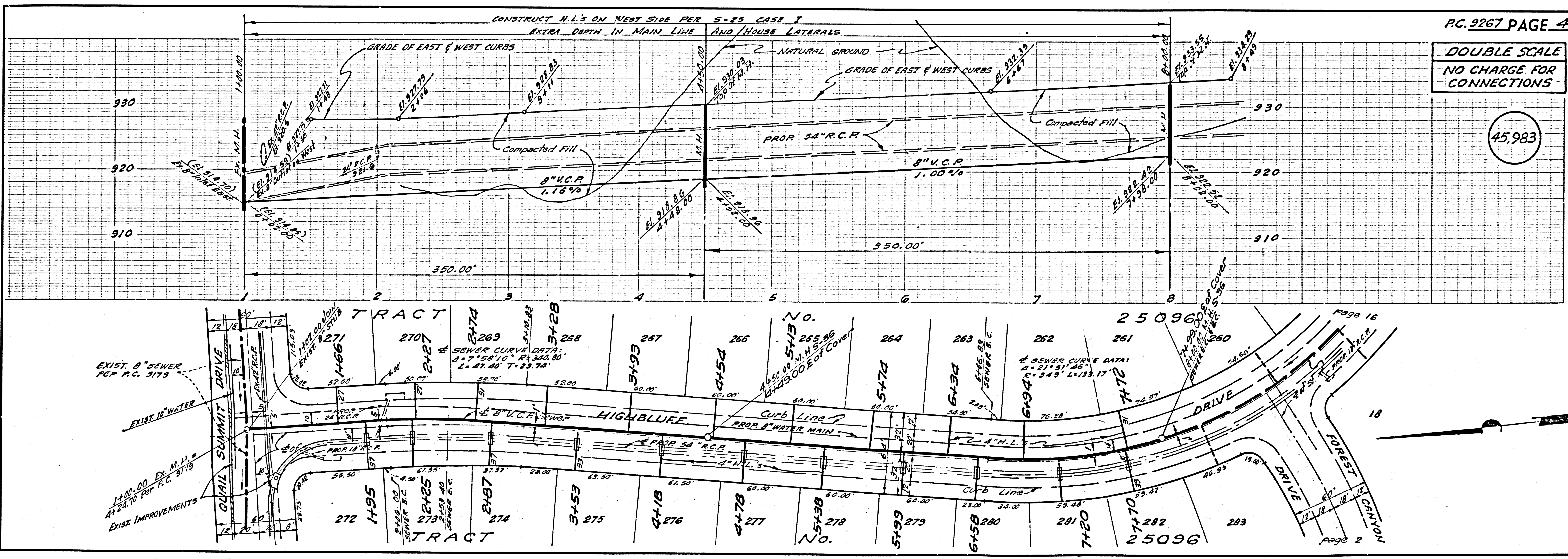
DOUBLE SCALE
NO CHARGE FOR
CONNECTIONS

45,982



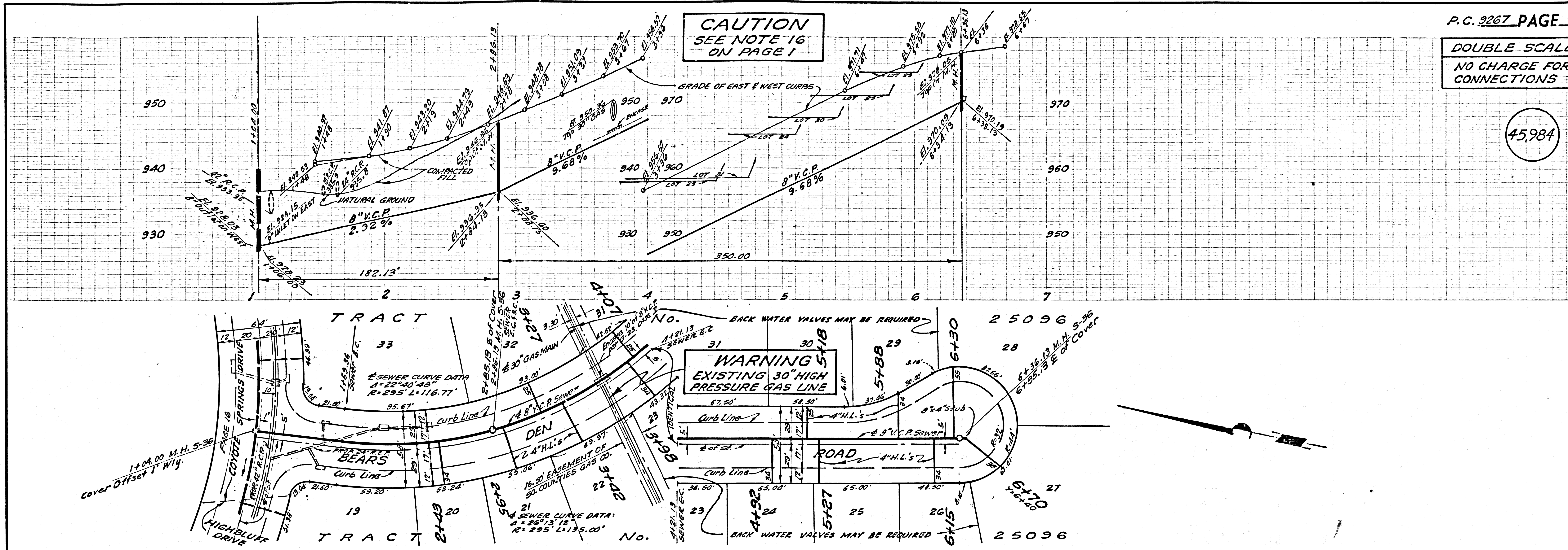
DOUBLE SCALE
NO CHARGE FOR
CONNECTIONS

45,983



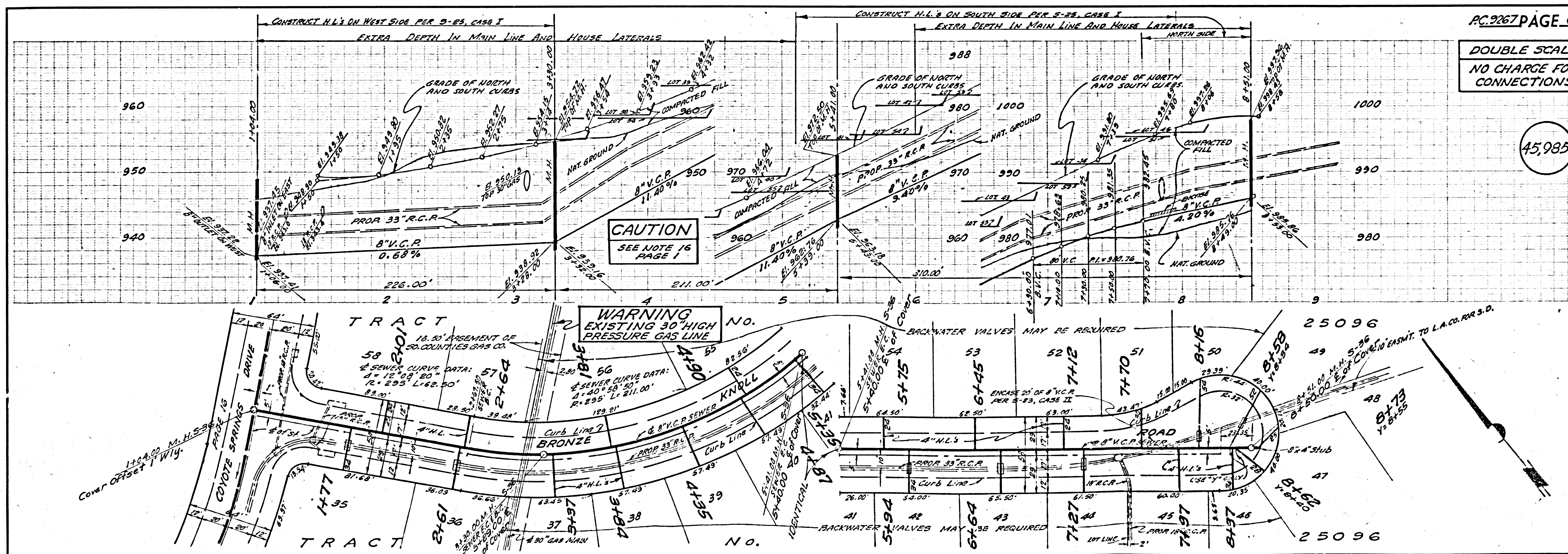
DOUBLE SCALE
NO CHARGE FOR
CONNECTIONS

45,984



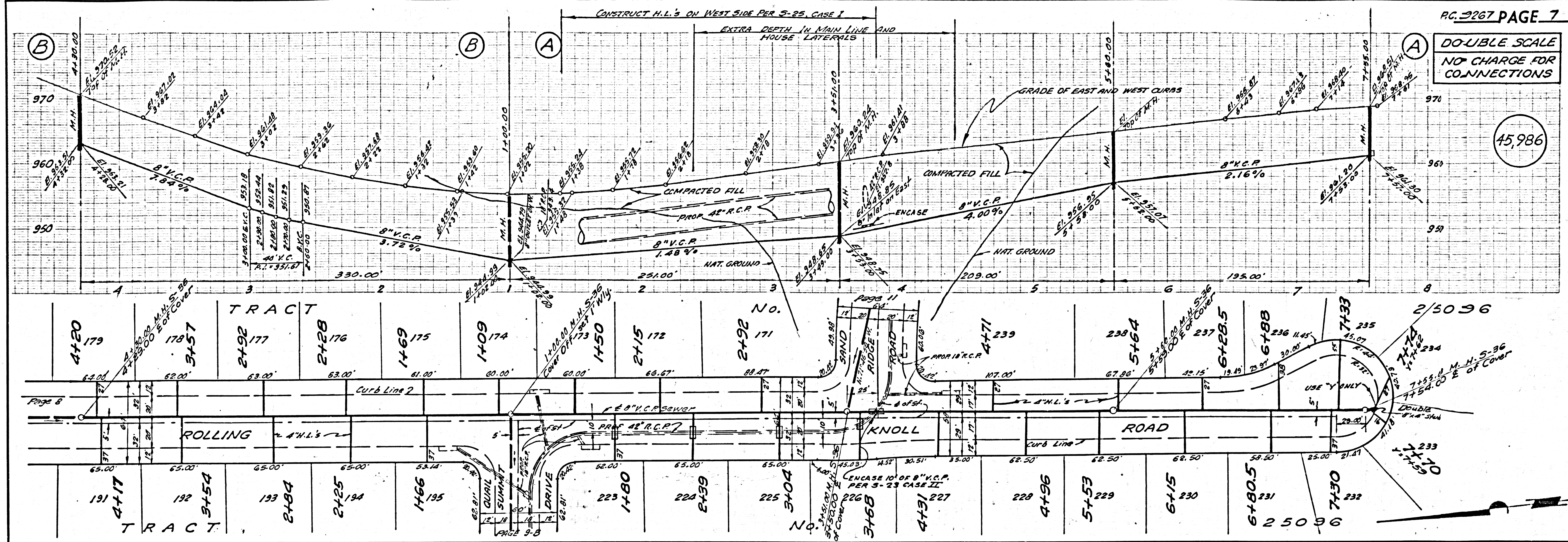
DOUBLE SCALE
NO CHARGE FOR
CONNECTIONS

45,985



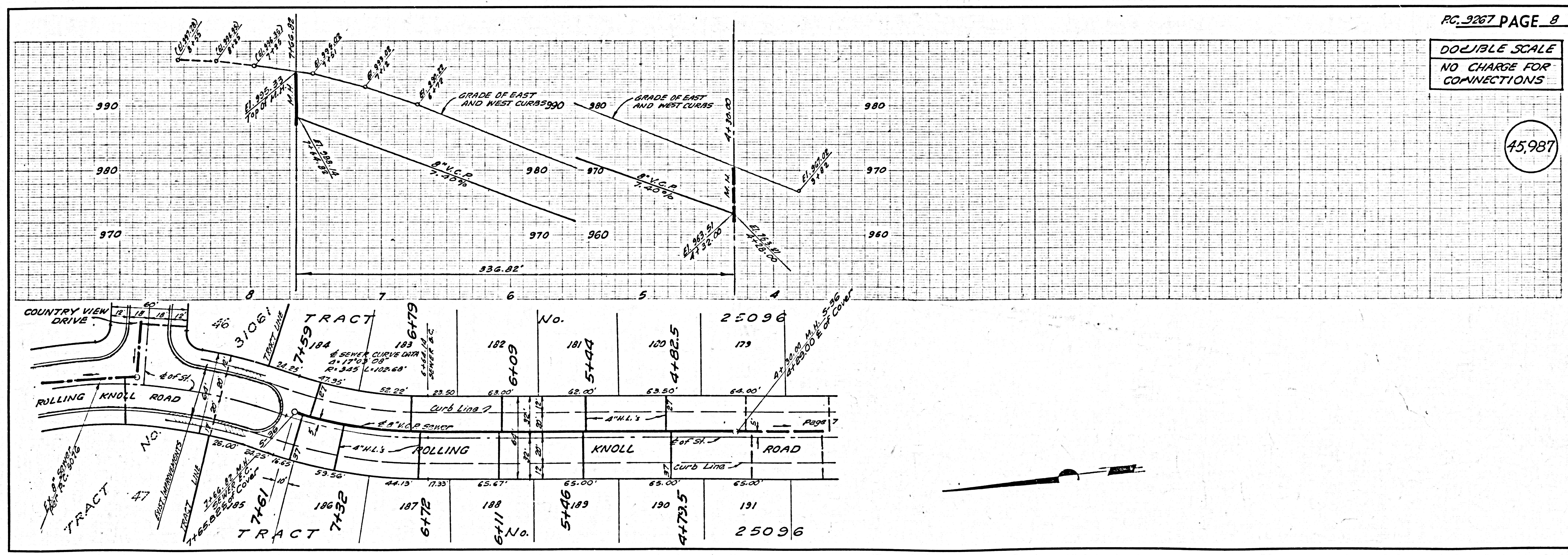
DOUBLE SCALE
NO CHARGE FOR
CONNECTIONS

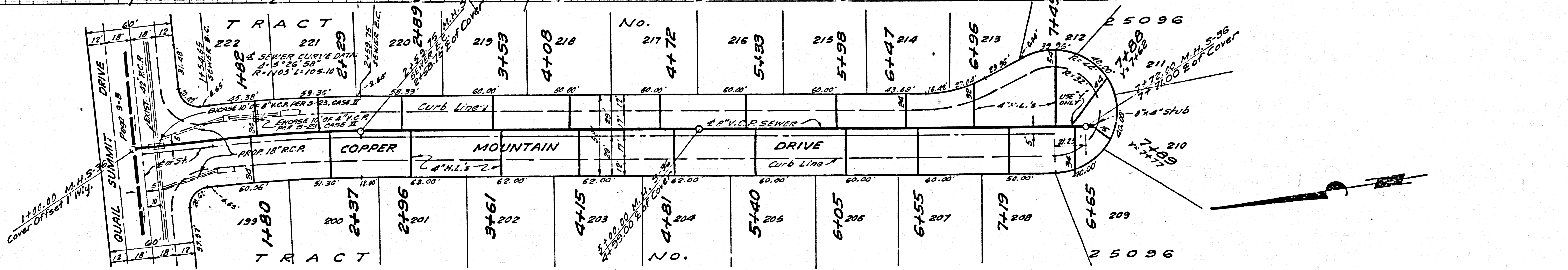
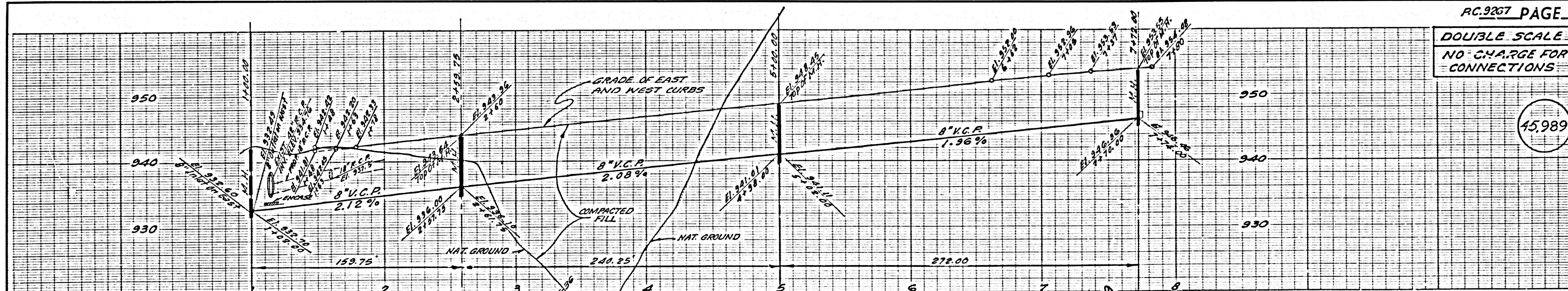
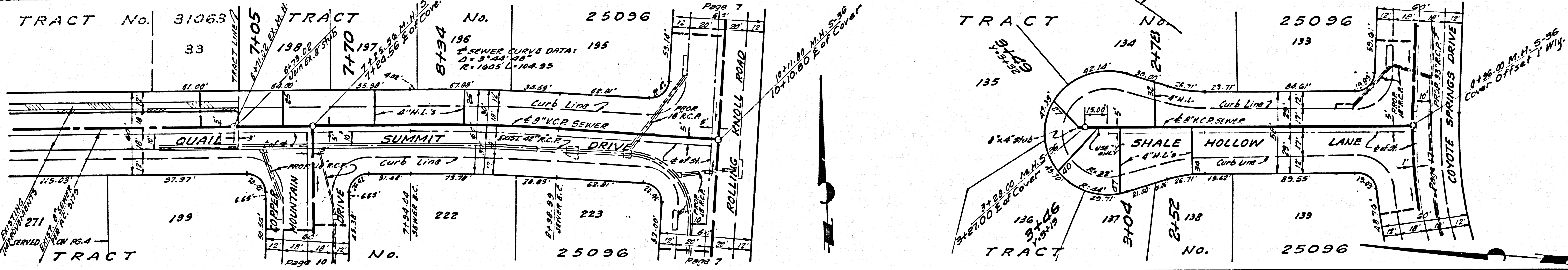
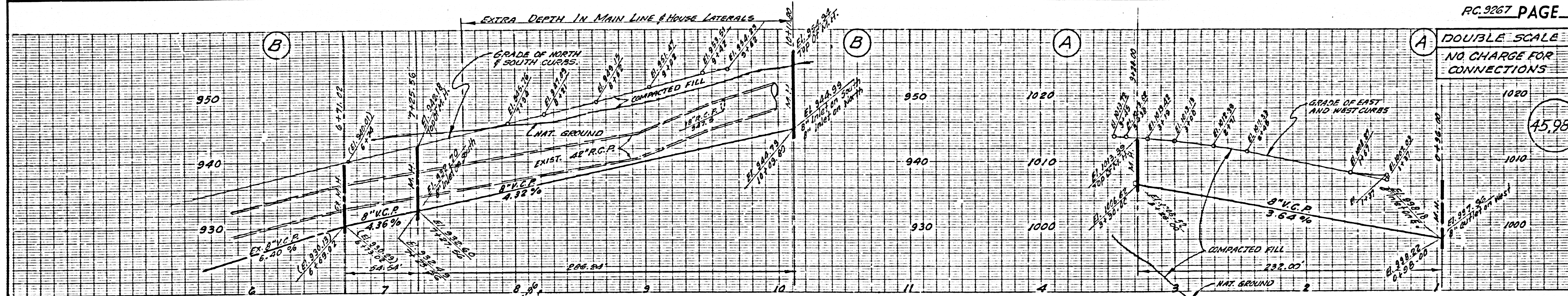
45,986



DOUBLE SCALE
NO CHARGE FOR
CONNECTIONS

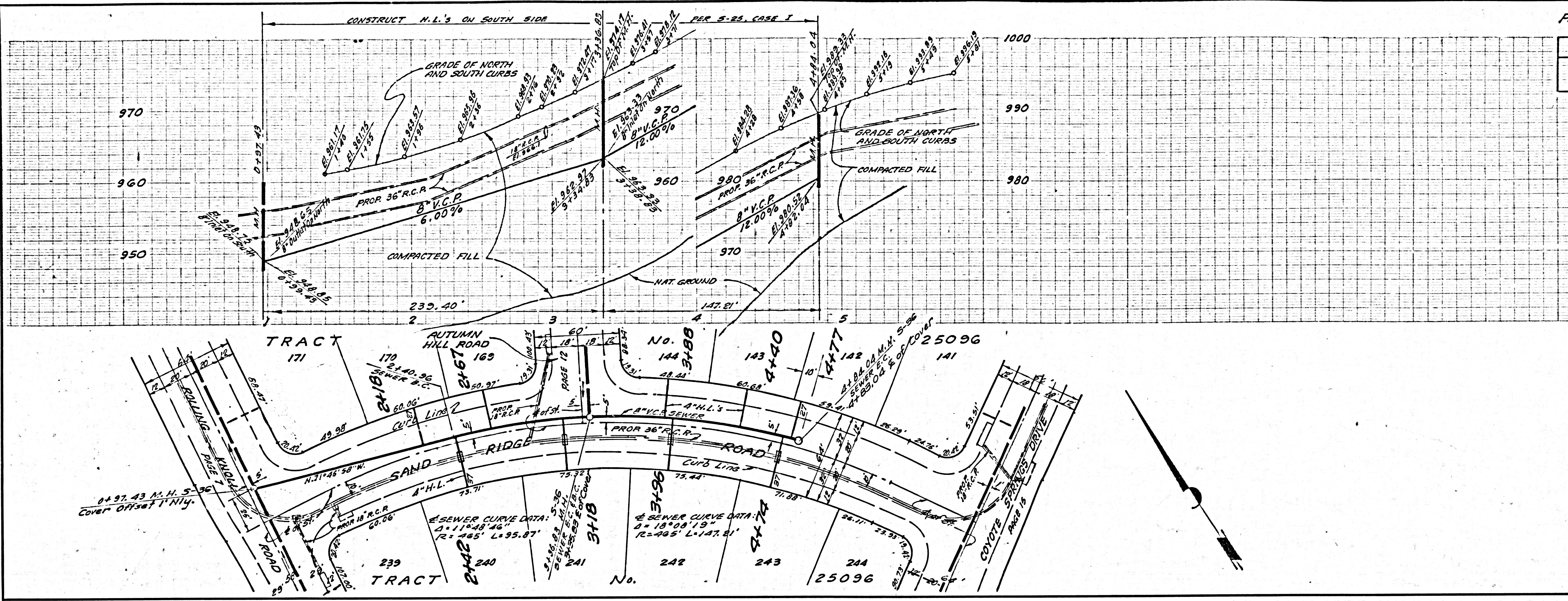
45,987





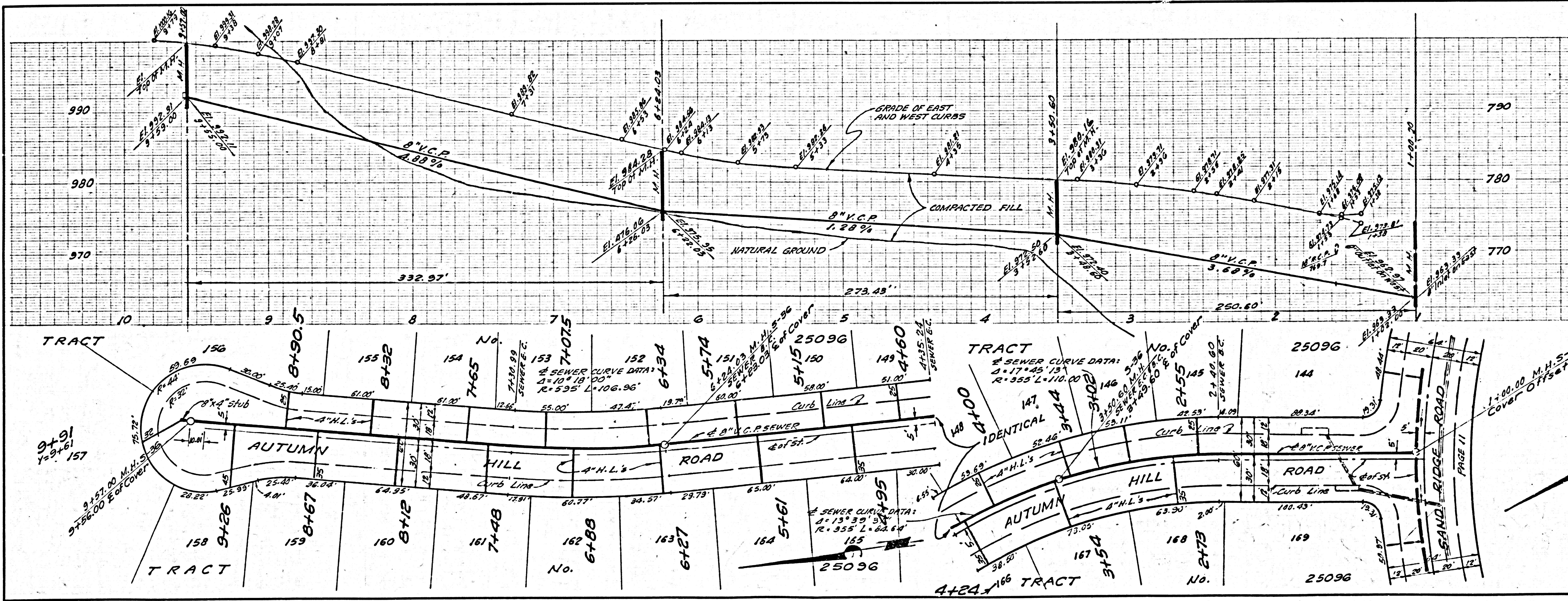
DOUBLE SCALE
NO CHARGE FOR
CONNECTIONS

45,990



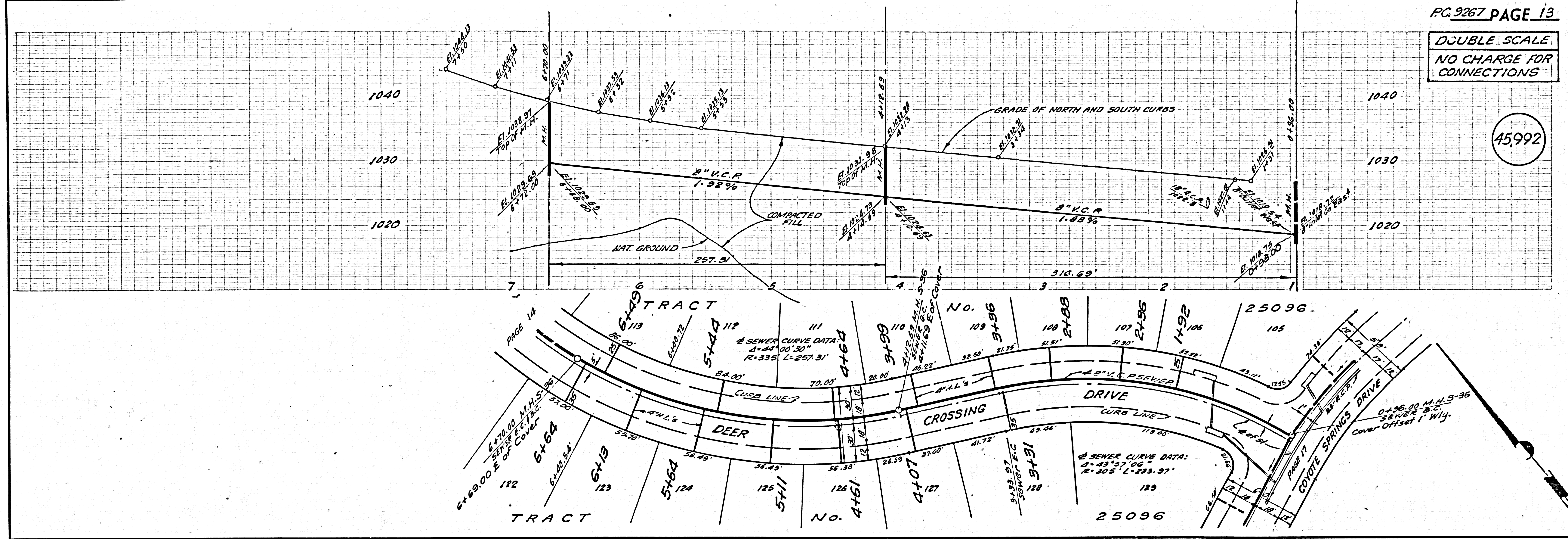
DOUBLE SCALE
NO CHARGE FOR
CONNECTIONS

45,991



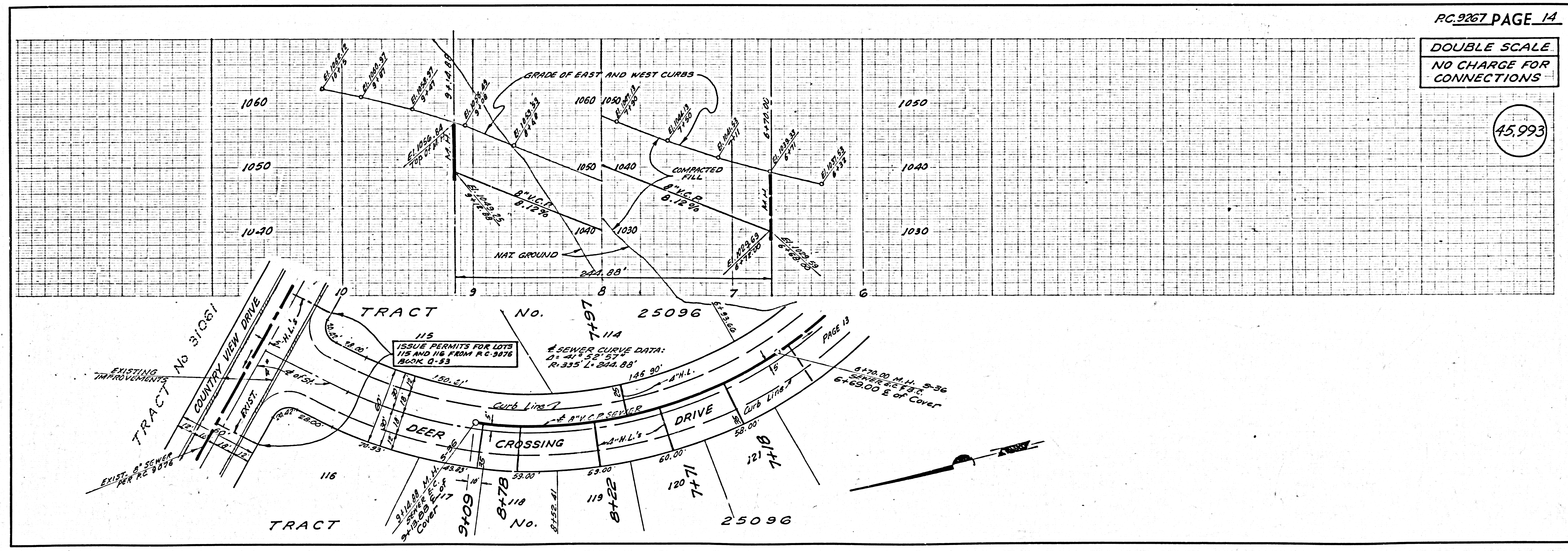
DOUBLE SCALE
NO CHARGE FOR
CONNECTIONS

45,992



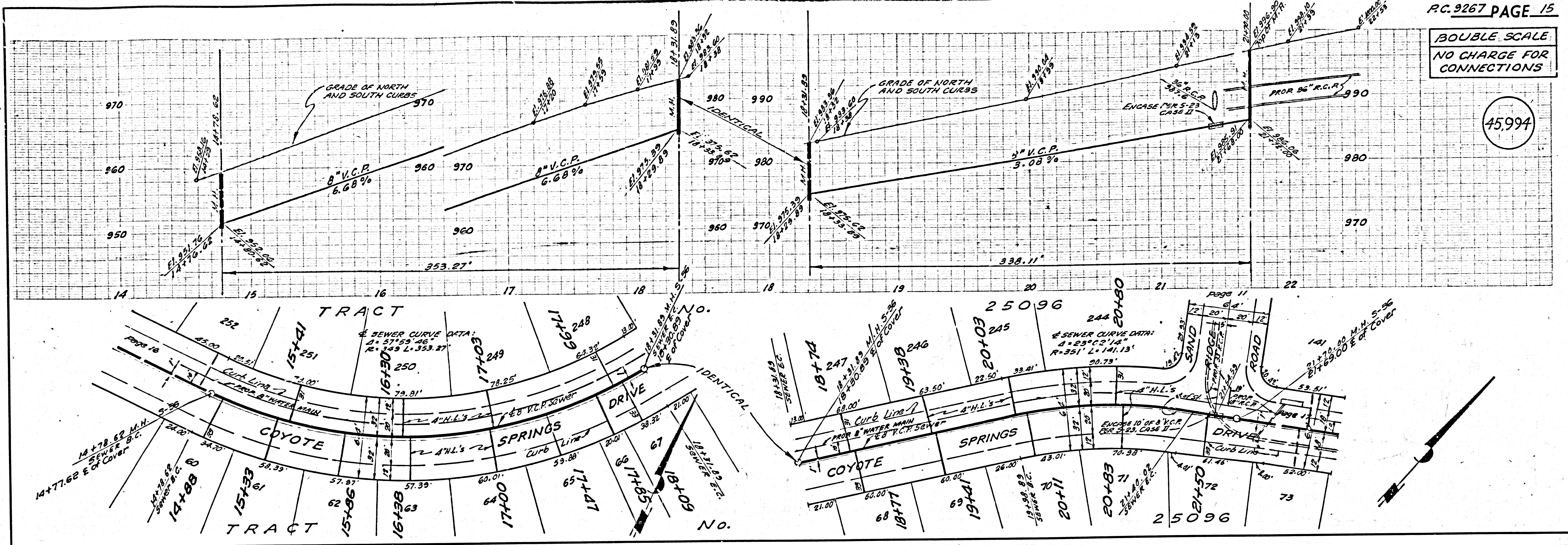
DOUBLE SCALE
NO CHARGE FOR
CONNECTIONS

45,993



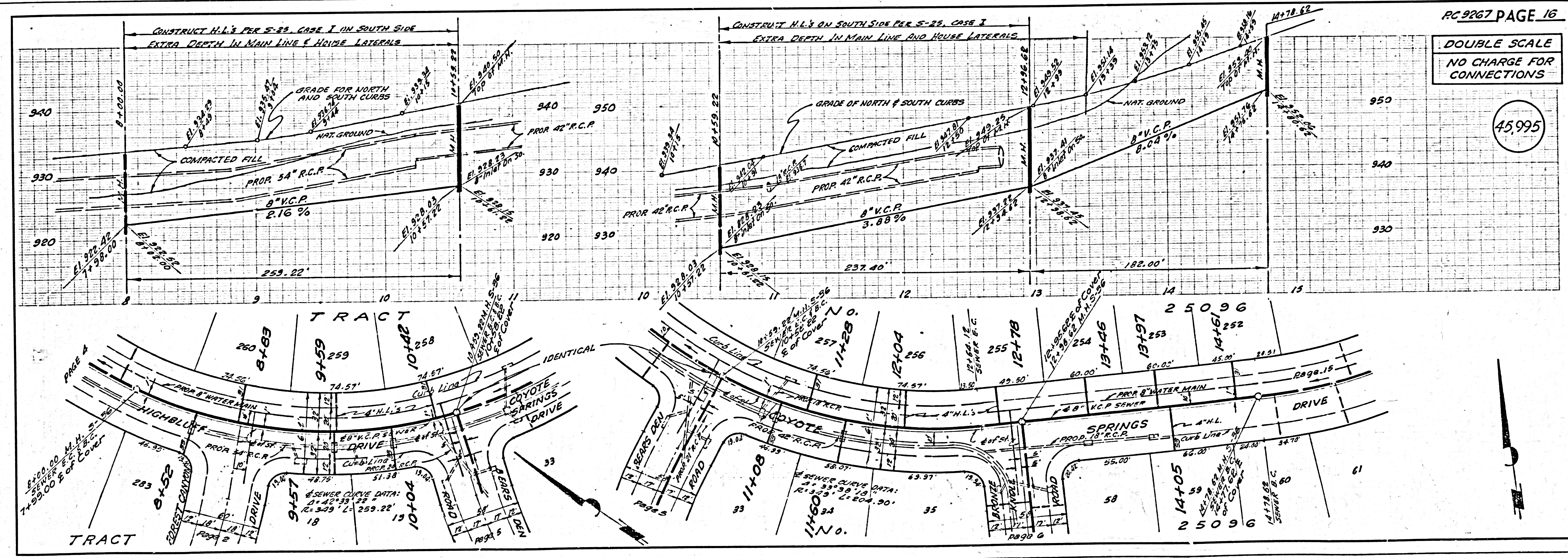
DOUBLE SCALE
NO CHARGE FOR
CONNECTIONS

45,994



DOUBLE SCALE
NO CHARGE FOR
CONNECTIONS

45,995



DOUBLE SCALE
NO CHARGE FOR
CONNECTIONS

45,996

