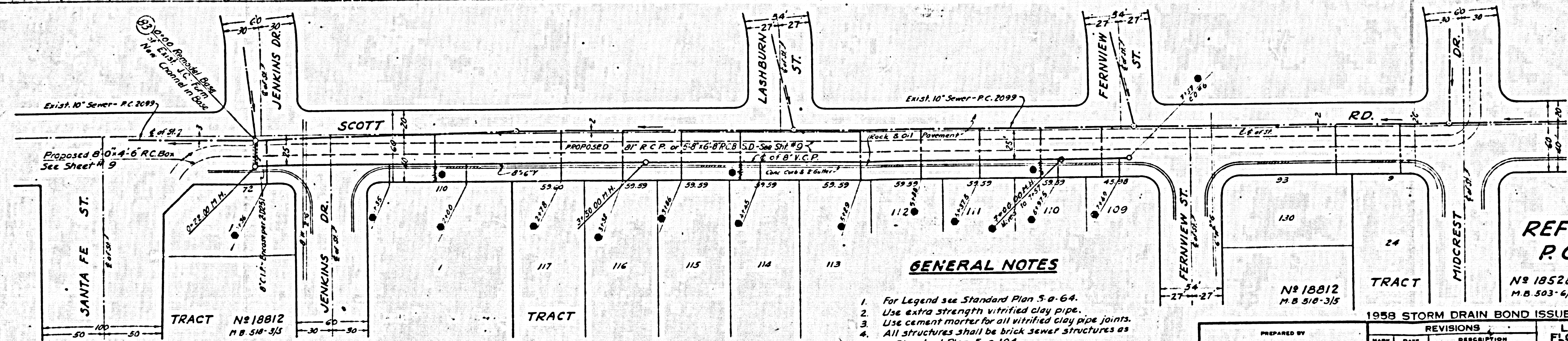
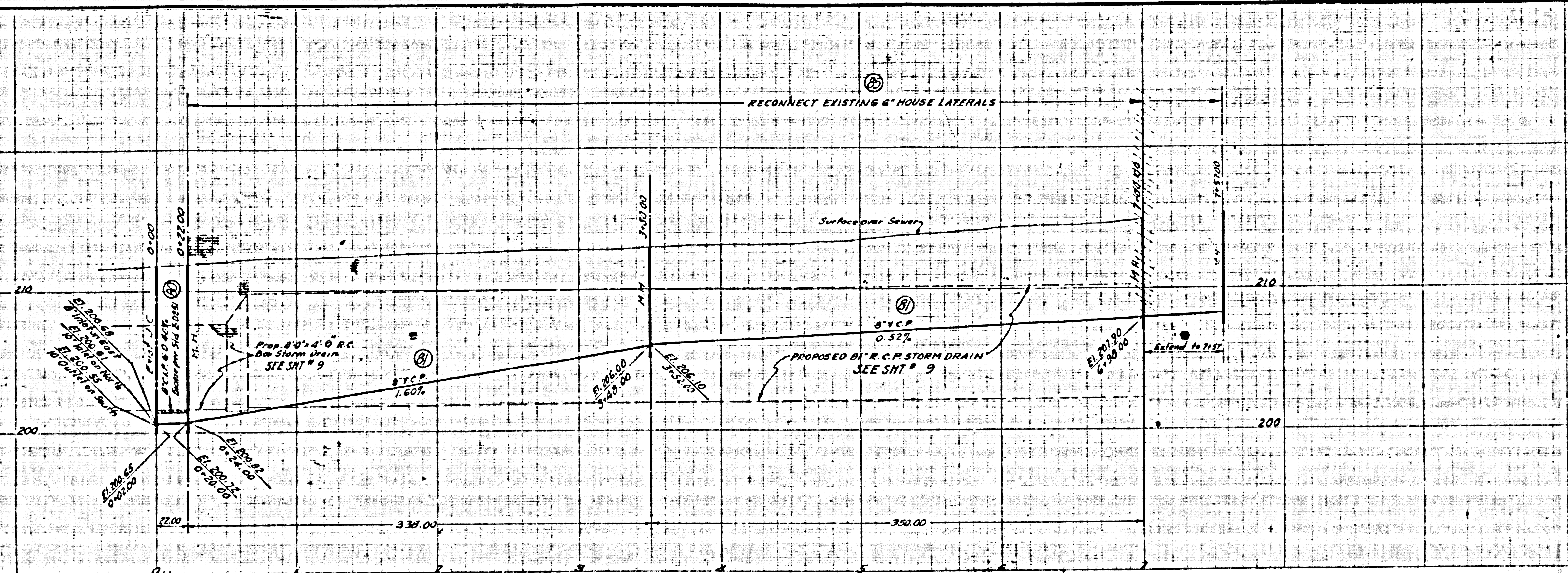


PROFILE
 HORIZ. SCALE 1" = 40'
 VERT. SCALE 1" = 4'



PLAN
 SCALE 1" = 40'

GENERAL NOTES

1. For Legend see Standard Plan 5-a-64.
2. Use extra strength vitrified clay pipe.
3. Use cement mortar for all vitrified clay pipe joints.
4. All structures shall be brick sewer structures as per Standard Plan 5-a-104.
5. Use standard manhole frame and cover as per Standard Plan 5-a-117.
6. Use Formule #1 Sec. 54, of Standard Specifications to compute allowable leakage.
7. Resurface trenches within the paved area of Street as noted on the Storm Drain Plans.

REFERENCE
 P.C. 9268

N^o 18528
 M.B. 510-6/8

1958 STORM DRAIN BOND ISSUE

| | | | | | |
|---|--|---|--|--|--|
| PREPARED BY JOHN A. LAMBIE COUNTY ENGINEER | | REVISIONS MARK DATE DESCRIPTION 1 10-27-64 As Built | | LOS ANGELES COUNTY FLOOD CONTROL DISTRICT | |
| RECOMMENDED BY <i>[Signature]</i> DIST. SANITATION ENGINEER | | APPROVED BY <i>[Signature]</i> CHIEF ENGINEER | | PROJECT NO. 532 WHITTWOOD UNIT 2 LINE B SANITARY SEWER RECONSTRUCTION PLAN AND PROFILE | |
| DRAWN BY: WOOD CHECKED BY: WOOD DESIGNED BY: WOOD DATE: APRIL 1964 | | SCALE: AS SHOWN DATE: SEPT. '63 SHEET 29 OF 48 | | NO. 275-532-D425 | |

AS BUILT DRAWING