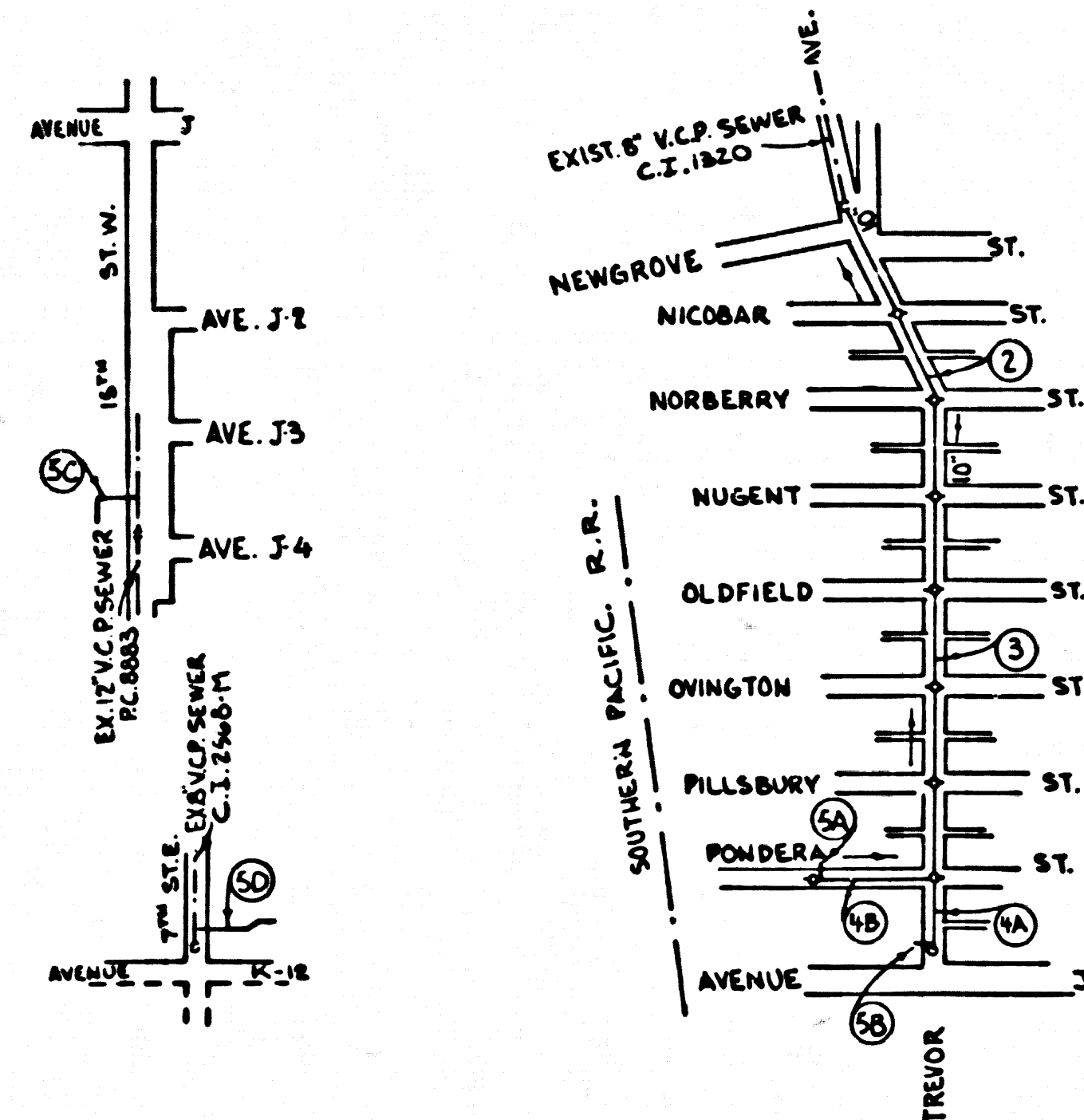


B.M. 101-130 (1972) ELEV. 2360.297
 AT LANCASTER, 0.3 MI. S. ALONG THE S.O. PAC. CO. R.R.
 FROM THE STA. 3/4 POLES N. OF MILEPOLE 406, 45-4 FT.
 E. OF THE E. RAIL OF THE MAIN TRACK, 3 FT. S. OF TELE.
 PHONE POLE, 2 FT. N. OF A WITNESS POST, AND SET IN THE
 TOP OF A CONC. POST PROJECTING 0.4 FT. ABOVE GROUND.
 F. B. 2510-40 LANCASTER WEST QUAD



BEFORE BREAKING INTO OR CONSTRUCTION ON X COUNTY
 SANITATION DISTRICT SEWER AND PRIOR TO FINAL ACCEPTANCE
 OF THE PROJECT SANITATION DISTRICT INSPECTOR SHALL BE
 NOTIFIED BY PHONE 362-8505 SO THAT REQUIRED INSPECTION
 CAN BE MADE.
 NO CONNECTION FOR THE DISPOSAL OF INDUSTRIAL WASTES
 SHALL BE MADE TO SEWERS SHOWN ON THESE DRAWINGS UNTIL
 A PERMIT FOR INDUSTRIAL WASTE WATER DISCHARGE HAS BEEN
 ISSUED BY THE SANITATION DISTRICTS FOR SAID CONNECTION.

COLLECT CHARGES
 AS INDICATED

REFER TO SECTION 7-10-4.1 OF STANDARD SPECIFICATIONS REGARDING SAFETY ORDERS.
 UNIFIED CLAY PIPE JOINTS SHALL BE "G" OR "H" PER SECTION 800-1 OF STANDARD SPECIFICATIONS.
 ALL JOINTS BETWEEN CAST IRON PIPE AND UNIFIED CLAY PIPE SHALL BE MADE WITH A RUBBER GLEIVE JOINT, TYPE "C" OR "D"
 WITH BUSHING IF NECESSARY, PER SECTION 800-5 OF STANDARD SPECIFICATIONS.
 ALL STRUCTURES SHALL BE EITHER BRICK PER 8-0 OR PRECAST CONCRETE PER 8-36
 SEWERS TO BE TESTED FOR LEAKAGE PER SECTION 800-1.4 OF STANDARD SPECIFICATIONS AND SPECIAL PROVISIONS.
 "1" OR "1/2" BRANCHES MAY BE USED FOR CONNECTIONS TO MAINLINE SEWERS.
 CONSTRUCT HOUSE LATERALS WITH INVERTS AT PROPERTY LINE & FEET BELOW CURB GRADE, OR GRADE OF CENTER LINE OF STREET,
 EXCEPT AS NOTED.
 FIGURES IN CIRCLES AT ENDS OF HOUSE LATERALS INDICATE DEPTH BELOW CURB GRADE, OR GRADE OF CENTER LINE
 OF STREET.
 HOUSES TO BE SERVED BY ENDS OF HOUSE LATERALS INDICATED BY HOUSE LATERALS SHALL BE CONSERVED WITH 1/2" OR 1" PER FOOT TO
 PROPERTY LINE.
 WARDROBE OR CLOSET IN ENDS OF HOUSE LATERALS INDICATED BY HOUSE LATERALS SHALL BE CONSERVED WITH 1/2" OR 1" PER FOOT TO
 PROPERTY LINE.
 ALL HOUSE LATERALS SHALL BE CONSTRUCTED IN A STRAIGHT ALIGNMENT AT RIGHT ANGLES FROM THE MAIN LINE SEWER EXCEPT AS
 SHOWN ON THE PLANS. HOUSE LATERALS FROM CHIMNEYS SHALL NOT HAVE AN ANGLE OF LESS THAN 45 DEGREES WITH THE MAIN
 LINE SEWER.
 THE CONTRACTOR SHALL NOTIFY THE DESIGN DIVISION BY TELEPHONE (213) 974-7283 AT LEAST 24 HOURS BEFORE
 STARTING ANY WORK UNDER THIS CONTRACT.
 IF A POWER POLE IS WITHIN THREE FEET OF THE SEWER, THE SEWER SHALL BE ENCASED PER 8-23 CASE II, TWO FEET ON EACH SIDE
 FROM THE POINT OF INTERFERENCE.

STREET RESURFACING:
 STREET RESURFACING METHODS SHALL BE IN ACCORDANCE WITH SECTION 800-1.8.0 OF THE SPECIAL PROVISIONS.
 FINAL STREET RESURFACING IN ANY LOCATION SHALL BE COMPLETED WITHIN 30 DAYS AFTER COMPLETION OF TRENCH BACKFILL.
 THE RESURFACED AREA SHALL BE SEALED WITH EITHER 88-8 OR CR-8 EMULSIFIED ASPHALT AND 1/2" CRUSHED CONCRETE AGGREGATE.
 RESURFACING SCHEDULE - RESURFACE TRENCH WITHIN PAVED AREA WITH TYPE II ASPHALTIC CONCRETE 1/2" INCHES IN THICK-
 NESS ON 6" INCHES OF AGGREGATE BASE MATERIALS EXCEPT AS NOTED BELOW.

PAGE NO.	STREET	STATION LIMITS	TO	TYPE OF RESURFACING
48	PONDERS STREET			TYPE II ASPHALT CONCRETE 2 INCHES IN THICKNESS OVER 6 INCHES OF CRUSHED AGGREGATE BASE
8	18TH ST. W.			TYPE II ASPHALT CONCRETE 2 INCHES IN THICKNESS OVER 6 INCHES OF CRUSHED AGGREGATE BASE

TYPE II ASPHALT CONCRETE SURFACING AND CRUSHED AGGREGATE BASE SHALL BE CONSTRUCTED IN ACCORDANCE WITH SECTION 800-8
 AND 800-8.1, RESPECTIVELY, OF THE STANDARD SPECIFICATIONS.
 ALL CONCRETE CROSS GUTTERS, CURBS, GUTTERS, PAVEMENT, AND DRIVEWAYS SHALL BE TUNNELED OR JACKED PER LOS ANGELES
 COUNTY ROAD DEPARTMENT REQUIREMENTS.
 THE FOLLOWING LATEST REVISED STANDARD PLANS ON FILE IN THE OFFICE OF COUNTY ENGINEER SHALL APPLY IN THE CONSTRUCTION
 OF THIS PROJECT:
 LEGEND: S-1 CRADLING AND ENCASEMENT S-23
 S-2 MINIMUM PUBLIC SAFETY REQUIREMENTS S-26
 S-3 BRICK MANHOLE S-28
 S-3 ALLOWABLE TRENCH WIDTHS S-33
 S-7 MANHOLE STEP S-37
 S-21 BEDDING FOR SEWER PIPE S-31
 S-22 SPECIAL SUPPORT AND PROTECTION S-36

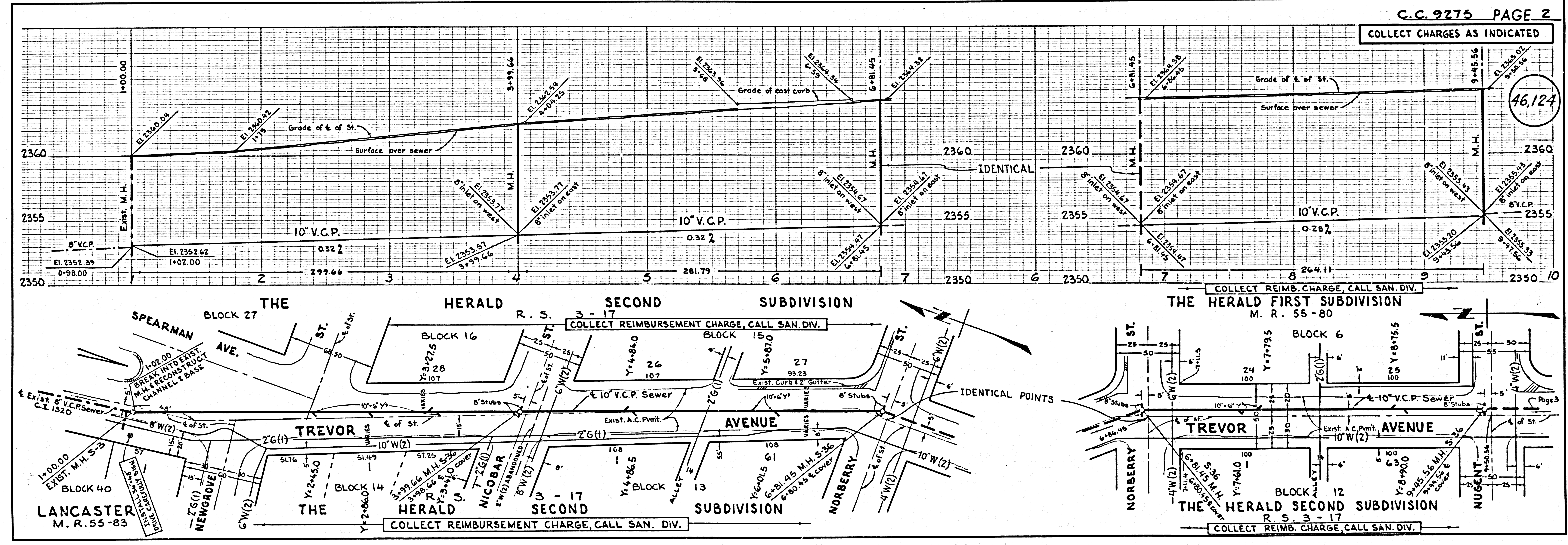
THE CONTRACTOR SHALL OBTAIN THE FOLLOWING PERMITS PRIOR TO CONSTRUCTION:
 1. LOS ANGELES COUNTY ROAD DEPARTMENT (FEE EXEMPT)
 2. PRIOR TO EXECUTION OF THE CONTRACT AGREEMENT BY THE COUNTY, THE CONTRACTOR MUST OBTAIN AT HIS
 EXPENSE A "PERMIT TO EXCAVATE" FROM THE STATE OF CALIFORNIA DIVISION OF INDUSTRIAL SAFETY.
 3. LOS ANGELES COUNTY SEWER CONNECTION PERMITS FOR HOUSE LATERALS SHOWN ON PAGE 2.
 THE CONTRACTOR SHALL NOTIFY THE DESIGN DIVISION BY TELEPHONE (213) 974-7283 AT LEAST 24 HOURS BEFORE
 STARTING ANY WORK UNDER THIS CONTRACT.
 THE UNDERGROUND UTILITY COMPANIES WITHIN THE LIMITS OF THIS PROJECT ARE AS FOLLOWS:
 (1) SOUTHERN CALIFORNIA GAS COMPANY
 (2) LOS ANGELES COUNTY WATERWORKS DIST. NO. 4
 (3)
 (4)

PAGE 1
 CASH CONTRACT NO. 9275
 PROFILE, ALIGNMENT AND GRADE OF
 SANITARY SEWERS
 CONSTRUCTED IN
 TREVOR AVENUE
 AND OTHER RIGHTS OF WAY
 46,123
 3 SHEETS, 5 PAGES
 SCALE VERT. 1" = 4'
 HORIZ. 1" = 40'
 JULY 1976
 COUNTY OF LOS ANGELES, CALIFORNIA

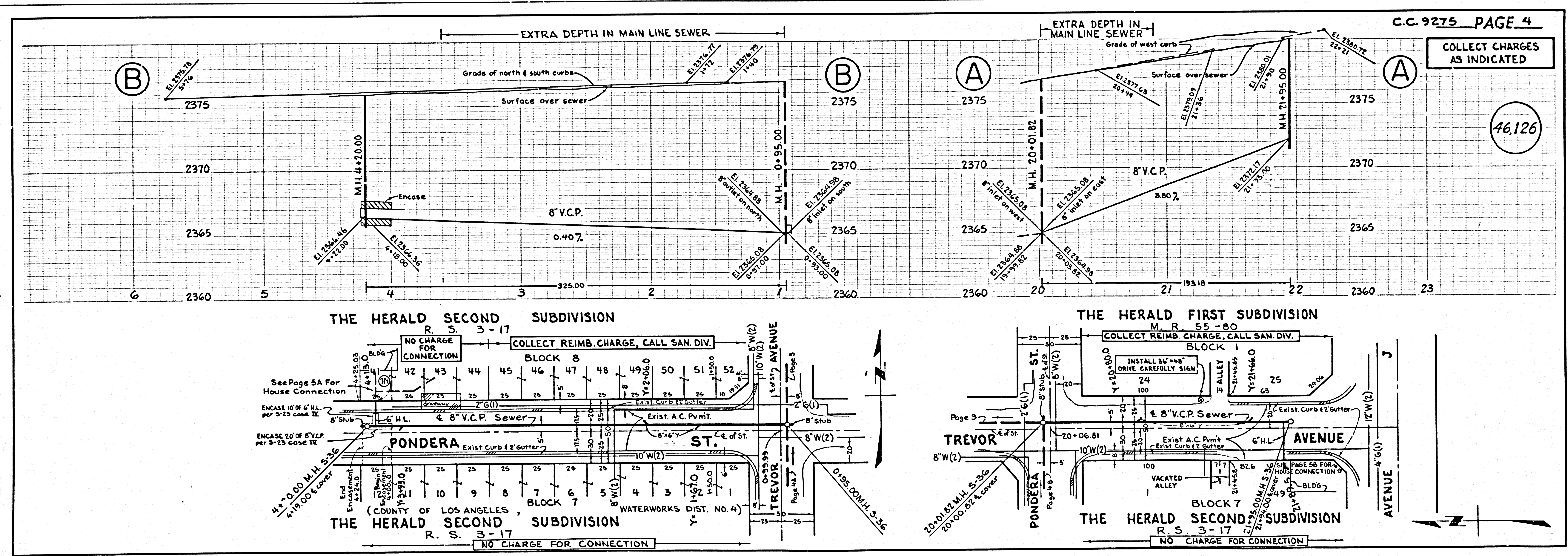
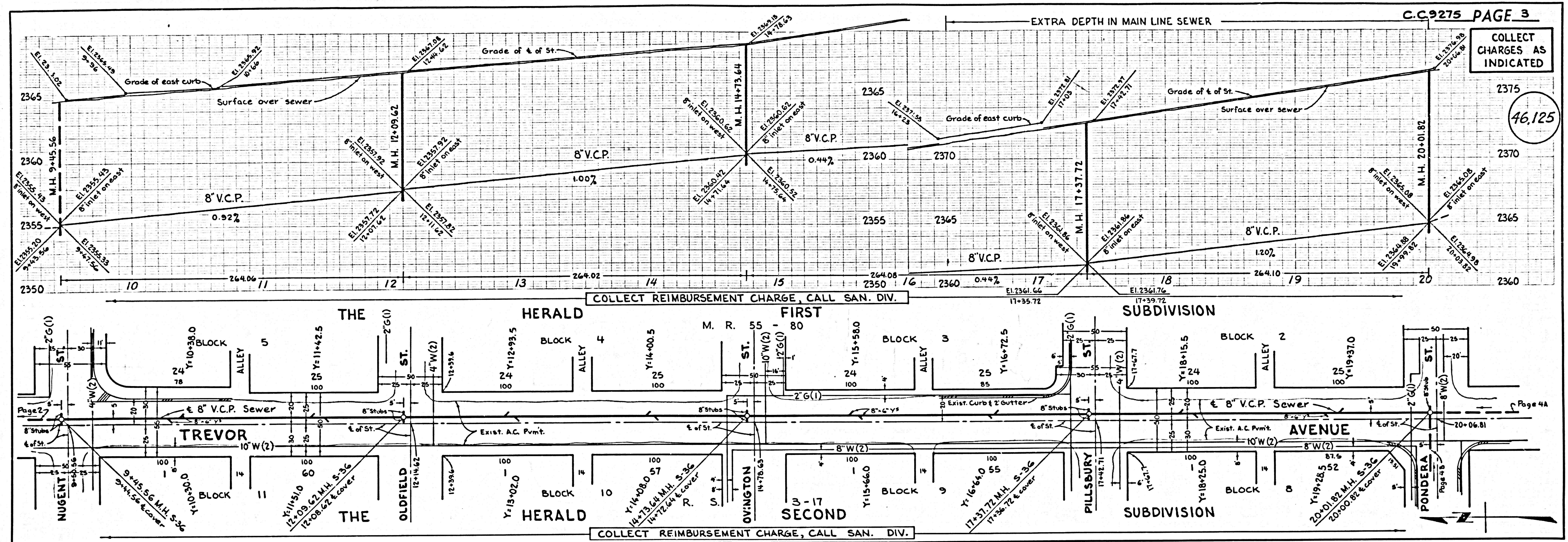
LOS ANGELES DEPT. OF COUNTY ENGINEER
 APPROVED BY *[Signature]* J. D. PARKHURST
 WATERWORKS DIVISION CHIEF ENGINEER OF COUNTY
 SANITATION DISTRICT NO. 14
 APPROVED BY *[Signature]* APPROVED BY *[Signature]*
 REGIONAL ENGINEER OFFICE ENGINEER
 DESIGNED BY *[Signature]*
 M.G. C. & NO. 16742
 NOTES:
 WORK SHALL BE CONSTRUCTED ACCORDING TO THE STANDARD SPECIFICATIONS FOR PUBLIC WORKS CONSTRUCTION (1976 EDITION)
 UNLESS OTHERWISE SPECIFIED AND COUNTY ENGINEER SPECIAL PROVISIONS FOR THE CONSTRUCTION OF SANITARY SEWERS
 DATED 2/29/76, 7/1/76 AND SHALL BE PROSECUTED IN THE PRESENCE OF THE COUNTY ENGINEER.
 GRADES TO WHICH THIS IMPROVEMENT IS TO BE CONSTRUCTED ARE SHOWN ON PLANS AND PROFILE GRADE POINTS FOR TOP
 OF CURB, CENTER LINE OF STREET OR CENTER LINE OF ALLEY ARE SHOWN BY CIRCLES ON PROFILES AT ALL POINTS BETWEEN DESIGN-
 ATED POINTS THE GRADE SHALL BE ESTABLISHED SO AS TO CONFORM TO A STRAIGHT LINE DRAWN BETWEEN SAID DESIGNATED
 POINTS.
 ELEVATIONS ARE IN FEET ABOVE U.S.C. & G.S. SEA LEVEL DATUM OF 1929.
 UNIT PRICES FOR ADDITIONAL WORK WHICH MAY BE REQUIRED BUT WHICH CANNOT BE ASCERTAINED IN ADVANCE, SHALL BE
 SUBMITTED IN THE PROPOSAL.
 THIS DRAWING AND THE DATA HEREON ARE HEREBY MADE A PART OF THE SPECIFICATIONS.

LAYOUT	MOODY	JULY '76	UNDERGROUND	MOODY	JULY '76
CHECKED	MOODY	JULY '76	BENCH MARKS		
TRACED	KAUDER	AUG. '76	MAINTENANCE	G. B. ANDERSON	8/1/76
F. B. 2223	4395		INSPECTOR		
A. B. 3123, 3126, 43130		W. S. 70171	RECORD PLANS		

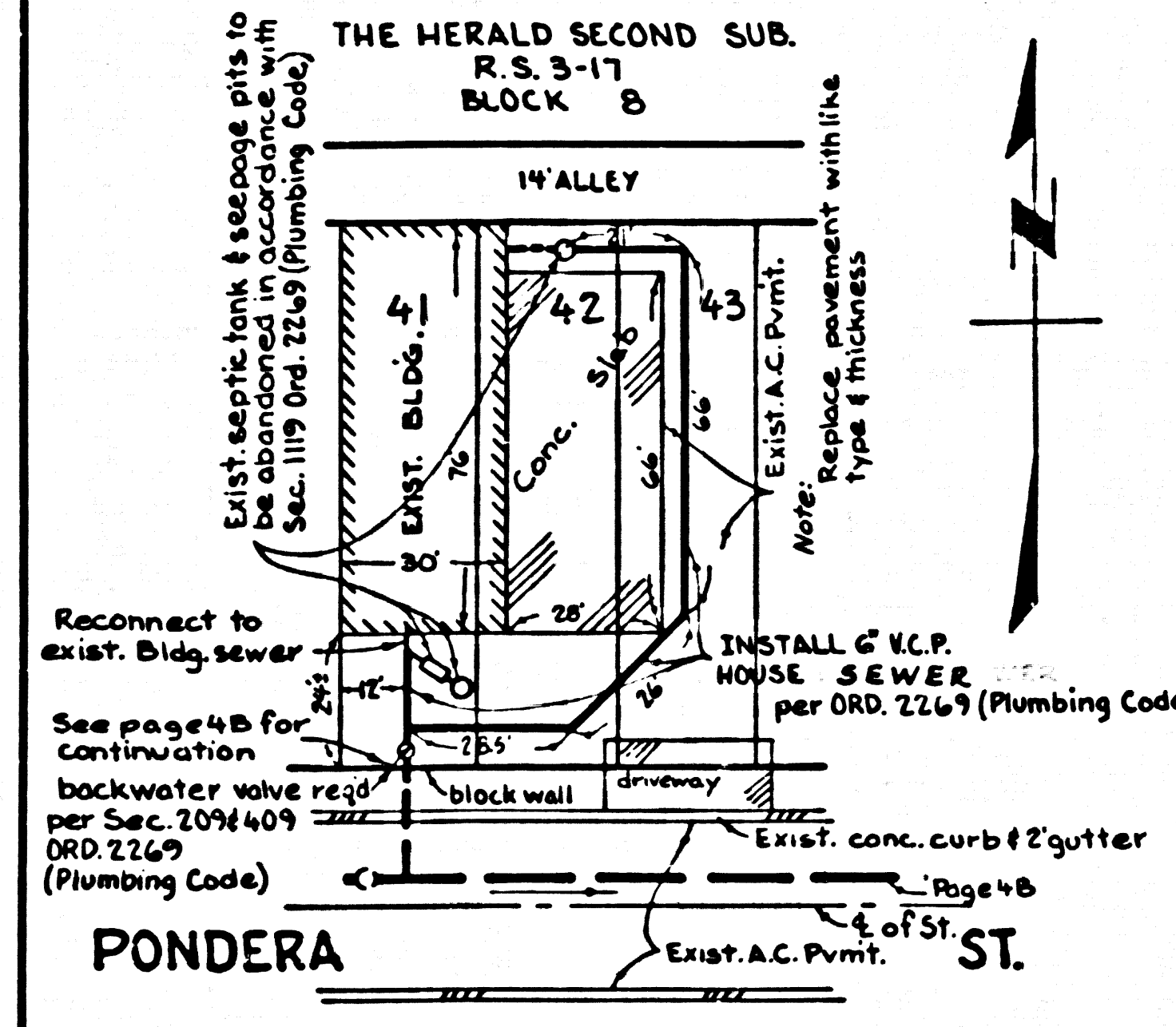
 LANCASTER BUILDING DISTRICT NO. 8 J.N. 5044.69



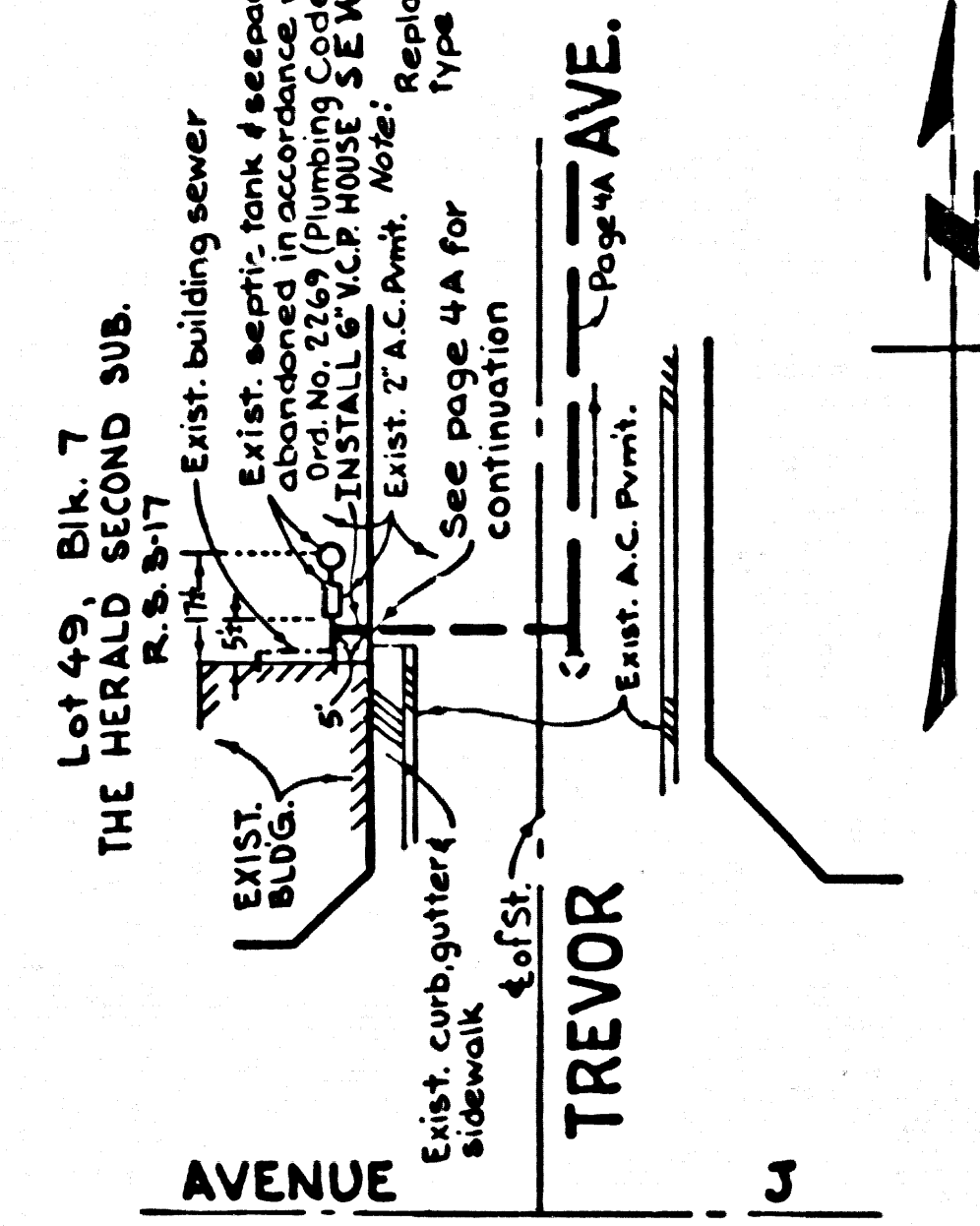
C.C. 9275 PAGE 2
 COLLECT CHARGES AS INDICATED
 46,124



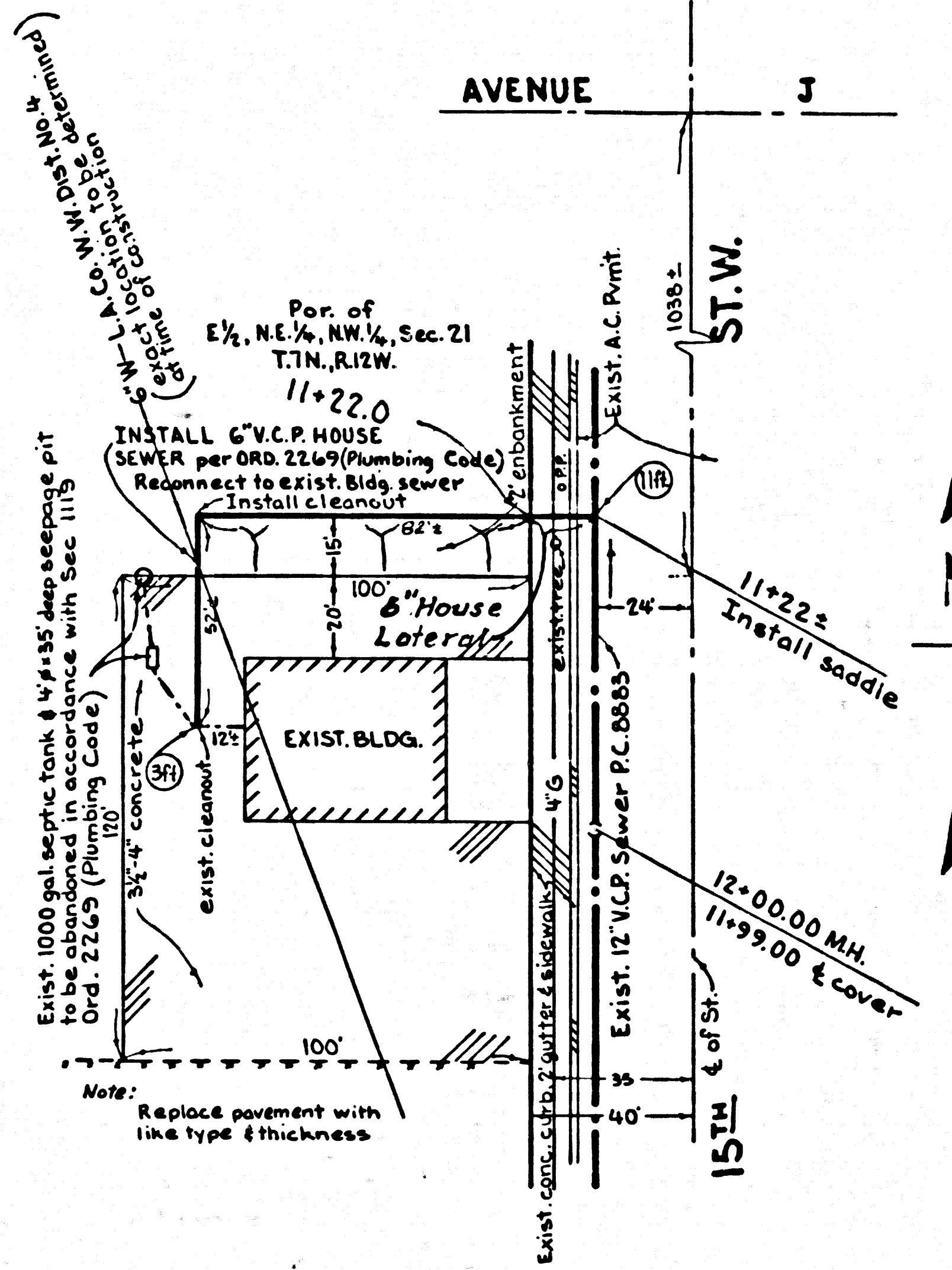
(46,127)



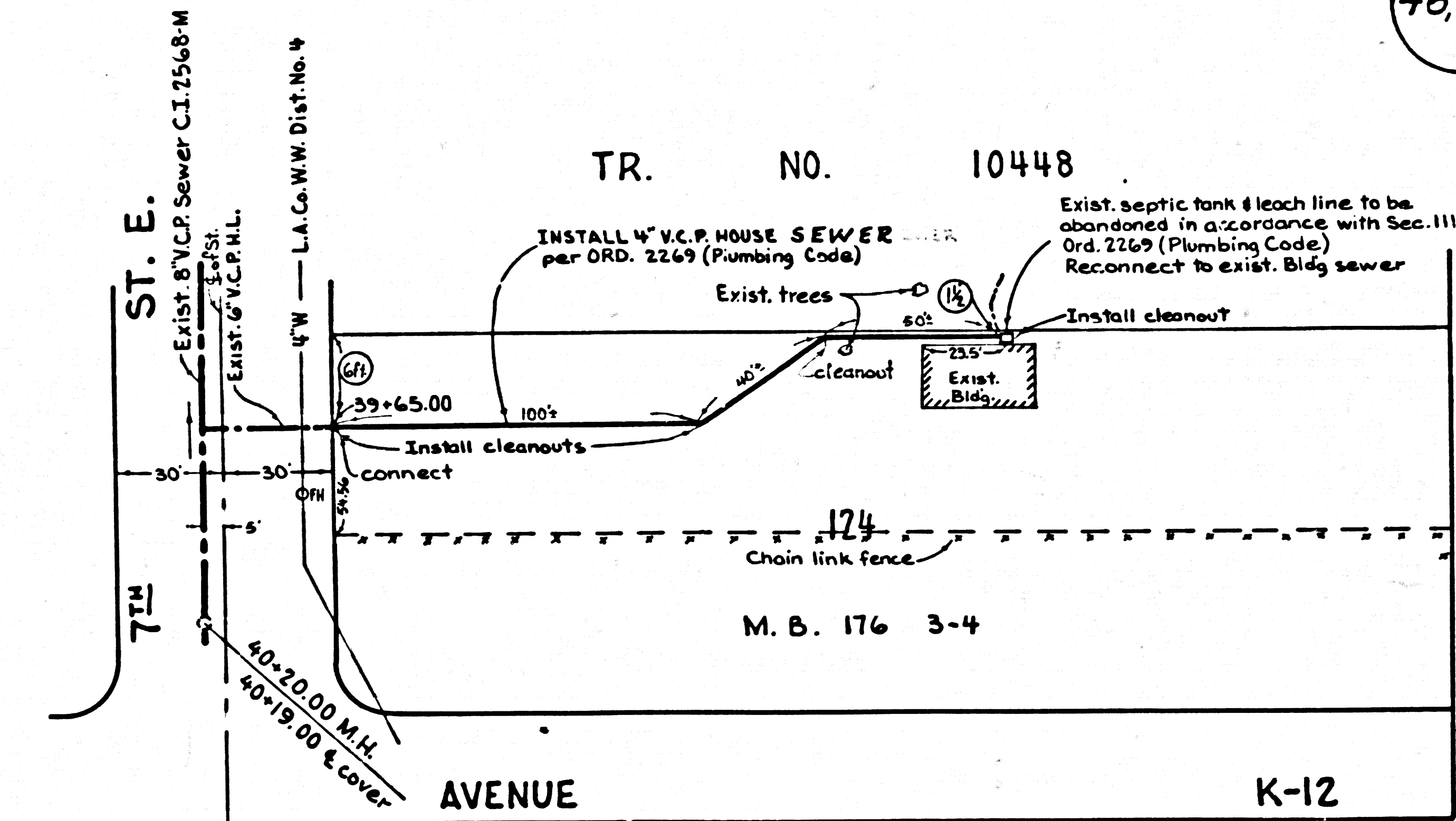
DETAIL A
HOUSE CONNECTION AT
325 PONDERA ST.



DETAIL B
HOUSE CONNECTION AT
301 AVENUE J



DETAIL C
HOUSE CONNECTION AT
44203 15TH ST. W.



DETAIL D
HOUSE CONNECTION AT
43014 7TH ST. E.

