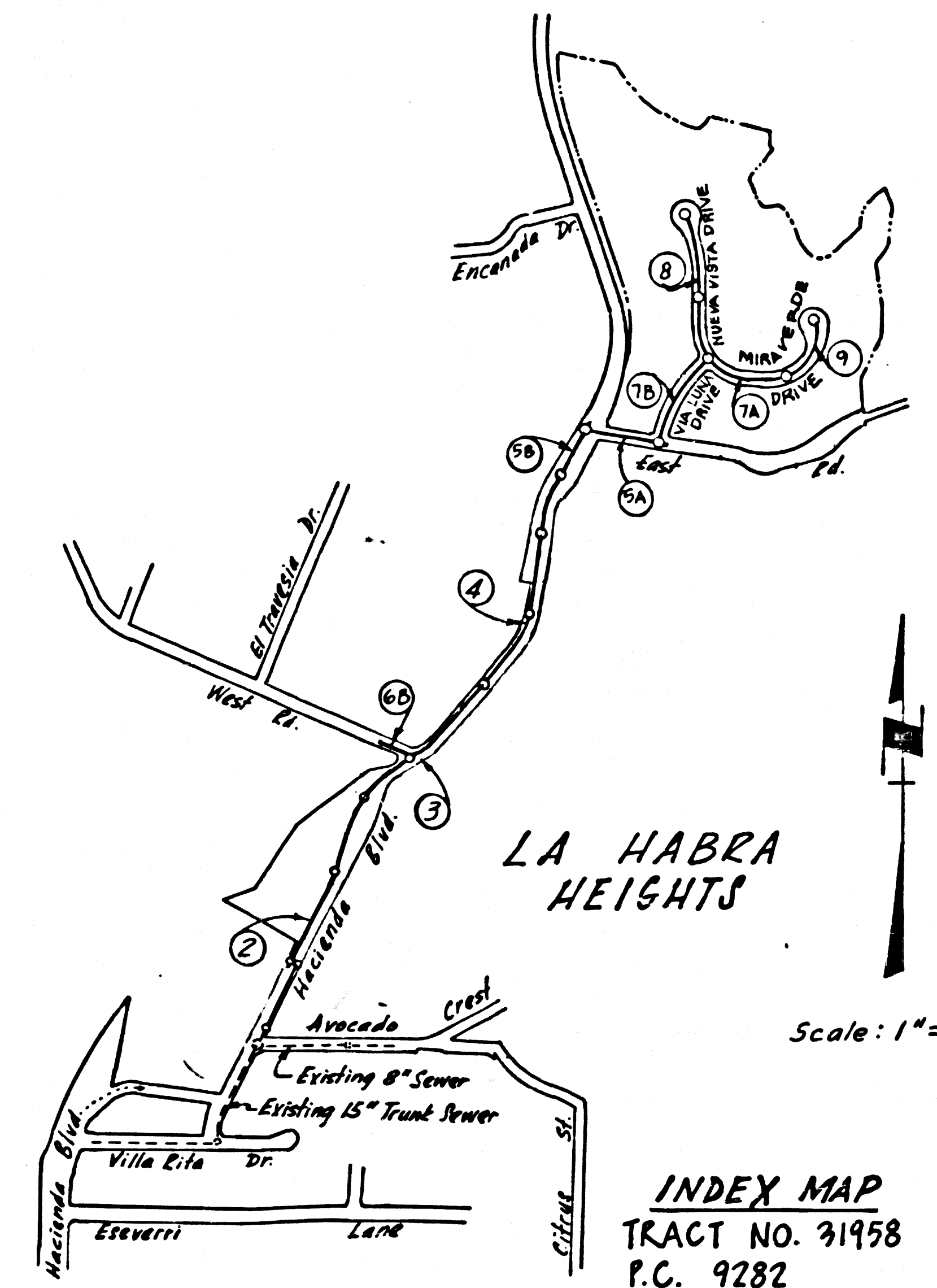


B.M. Bg 1665 ELEV. 555.235  
 2+7 IN W END CONC STEP TO  
 OFFICE AT SE CORNER HACIENDA  
 BLVD. + EAST RD. 30 FT E + 40 FT S  
 OF INTERSECT. QUAD. 19 65

REVISION NO. 1 DATE 7/25/78  
 MOVED SEWER LINE 6.25' SOUTH OF  
 CENTERLINE EAST ROAD FROM HACIENDA  
 BLVD. TO 307.07' EAST OF HACIENDA  
 BLVD.  
 APPROVED *[Signature]*  
 Office of County Engineer / RE. NO. 15931

PROFILE, ALIGNMENT AND GRADE OF  
**SANITARY SEWERS** PAGE 1  
 TO BE CONSTRUCTED IN  
**HACIENDA BOULEVARD** 46868  
 AND  
**TRACT NO. 31958**  
**PRIVATE CONTRACT NO. 9282**

W.S. 34  
 5 SHEETS, 9 PAGES  
 SCALE: VERT. 1" = 8'  
 HORIZ. 1" = 20' NOVEMBER, 1976  
 PREPARED IN THE OFFICES OF  
**COOPER SHERMAN ENGINEERING CO.**  
 10960 Wilshire Boulevard, Los Angeles, Cal. 90024  
 Phone (213) 473-4501  
 BY *[Signature]* 3/22/77  
 REG. C. E. No. 8332



NO CONNECTION FOR THE DISPOSAL OF INDUSTRIAL WASTES  
 SHALL BE MADE TO SEWERS SHOWN ON THESE DRAWINGS UNTIL  
 A PERMIT FOR INDUSTRIAL WASTE WATER DISCHARGE HAS BEEN  
 ISSUED BY THE SANITATION DISTRICTS FOR SUCH CONNECTION.

BEFORE BREAKING INTO OR CONSTRUCTION ON A COUNTY  
 SANITATION DISTRICT SEWER AND PRIOR TO FINAL ACCEPTANCE  
 OF THE PROJECT SANITATION DISTRICT INSPECTOR SHALL BE  
 NOTIFIED BY PHONE 362-9300 SO THAT REQUIRED INSPECTION  
 CAN BE MADE.

COLLECT CHARGES  
 AS INDICATED

19. (Cont.)

BY THE BUILDING AND SAFETY DIVISION.  
 B- ALL BACKFILL AND GROUT REPLACES SHALL BE COMPACTED TO A  
 MINIMUM DENSITY FOR A S.T.M. STD. METHOD OF TEST 0-93-  
 FT AS MODIFIED. ACCEPTABLE CERTIFICATION OF SUCH COMPACTION  
 SHALL BE SUBMITTED TO DESIGN DIVISION.

**GENERAL NOTES:**

1. DRAWINGS ARE IN FEET UNLESS OTHERWISE NOTED.
2. NO REVISIONS SHALL BE MADE IN THESE PLANS WITHOUT THE APPROVAL OF THE COUNTY ENGINEER.
3. NO REPRESENTATIVE OF THE COUNTY ENGINEER WILL SURVEY OR LAY OUT ANY PORTION OF THE WORK.
4. GRADES TO WHICH THIS IMPROVEMENT IS TO BE CONSTRUCTED ARE SHOWN ON PLANS AND PROFILES. GRADE POINTS FOR TOP OF CURBS, CENTER LINE OF STREETS, OR CENTER LINE OF ALLEYS ARE SHOWN BY CIRCLES ON PROFILES. AT ALL POINTS BETWEEN DESIGNATED POINTS THE GRADE SHALL BE ESTABLISHED SO AS TO CONFORM TO A STRAIGHT LINE DRAWN BETWEEN SAID DESIGNATED POINTS.
5. THE PRIVATE ENGINEER SHALL FURNISH THE COUNTY ENGINEER WITH GRADE SHEETS AND STATIONING FOR ALL HOUSE LATERALS AND "T" OR "Y" BRANCHES AND SHALL PROVIDE STAKES FOR THEM AT THEIR PROPER LOCATIONS WITH STATIONING PLAINLY MARKED. ALL HOUSE LATERALS SHALL BE CONSTRUCTED IN A STRAIGHT ALIGNMENT AT RIGHT ANGLES FROM THE MAIN LINE SEWER EXCEPT AS SHOWN ON THE PLANS. HOUSE LATERALS FROM CHIMNEYS SHALL NOT HAVE AN ANGLE OF LESS THAN 45° WITH THE MAIN LINE SEWER. ANY CHANGE IN ALIGNMENT SHALL BE REQUESTED IN WRITING BY THE PRIVATE ENGINEER.
6. THE PRIVATE ENGINEER SHALL FURNISH THE HOUSE LATERAL DEPTH AT THE PROPERTY LINE BELOW THE TOP OF CURB ELEVATION FOR EACH HOUSE LATERAL ON THE GRADE SHEET.
7. BEFORE WORK CAN BE STARTED, THE CONTRACTOR MUST OBTAIN A PERMIT TO EXCAVATE IN COUNTY STREETS FROM THE L.A. COUNTY ROAD DEPT., DISTRICT OFFICE NO. 4, AND PAY A FEE TO THE COUNTY ENGINEER, 5.0% OF THE CONTRACT VALUE TO THE REGIONAL OFFICE, TO COVER THE COST OF CONSTRUCTION INSPECTION AND RECORD PLANS.
8. IF WORK IS TO BE DONE IN A STATE HIGHWAY, A PERMIT MUST BE OBTAINED FROM THE STATE OF CALIFORNIA, DIVISION OF HIGHWAYS, 130 SOUTH SPRING STREET, LOS ANGELES, CALIFORNIA.
9. APPROVAL OF THIS PLAN BY THE COUNTY OF LOS ANGELES DOES NOT CONSTITUTE A REPRESENTATION AS TO THE ACCURACY OF THE LOCATION OF OR THE EXISTENCE OR NON-EXISTENCE OF ANY UNDERGROUND UTILITY PIPE, OR STRUCTURE WITHIN THE LIMITS OF THIS PROJECT. THIS NOTE APPLIES TO ALL PAGES.
10. REFER TO SECTION 7-16.4.3 OF THE STANDARD SPECIFICATIONS, REGARDING SAFETY ORDERS.
11. BEFORE OBTAINING SEWER CONSTRUCTION INSPECTION PERMIT THE CONTRACTOR SHALL OBTAIN A STATE OF CALIFORNIA DEPARTMENT OF INDUSTRIAL SAFETY PERMIT TO EXCAVATE.

**CONSTRUCTION NOTES:**

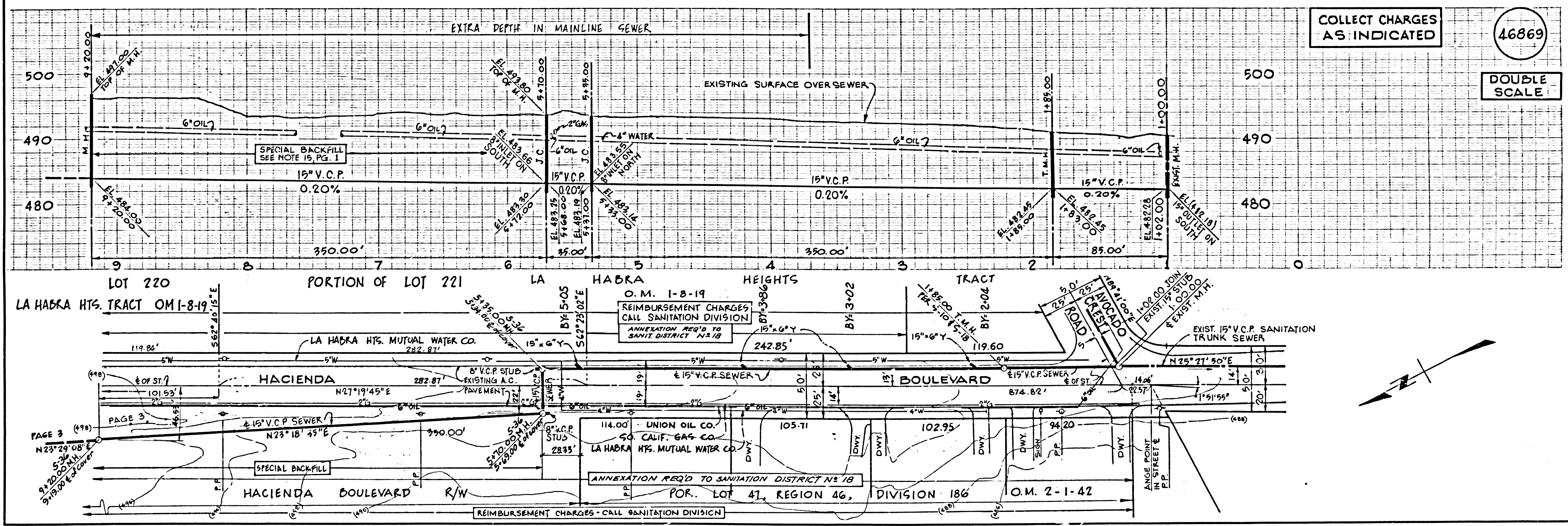
1. WORK SHALL BE CONSTRUCTED ACCORDING TO THE STANDARD SPECIFICATIONS FOR PUBLIC WORKS CONSTRUCTION 1976 EDITION WITH SUBSTITUTIONS AND COUNTY ENGINEER'S SPECIAL PROVISIONS FOR THE CONSTRUCTION OF SANITARY SEWERS DATED SEPTEMBER 21, 1976 AND SHALL BE PROSECUTED FULLY IN THE PRESENCE OF THE COUNTY ENGINEER.
2. THE CONTRACTOR SHALL NOTIFY THE REGIONAL DIVISION BY TELEPHONE, 866-7011, EXT. 250 AT LEAST TWENTY-FOUR HOURS BEFORE STARTING ANY WORK UNDER THIS CONTRACT.
3. HOUSE LATERALS TO BE CONSTRUCTED WITH INVERTS AT PROPERTY LINE 4 FEET BELOW CURB GRADE EXCEPT AS NOTED.
4. WYE OR TEE BRANCHES MAY BE USED FOR CONNECTIONS TO MAINLINE SEWERS EXCEPT AS NOTED.
5. ALL STRUCTURES SHALL BE EITHER BRICK MANHOLES PER S-3 OR PRECAST CONCRETE MANHOLES PER S-26. EXCEPT AS NOTED.
6. PROVIDE STAKES ON THE PROPERTY LINE OR PROPERTY LINES PRODUCED AT RIGHT ANGLES TO THE SEWER LINE AT THE CENTER LINE OF EACH MANHOLE.
7. MANHOLE TOPS IN UNIMPROVED RIGHTS OF WAY TO BE SIX INCHES ABOVE FINISHED GRADE.
8. VITRIFIED CLAY PIPE JOINTS SHALL BE TYPE "B", "C", OR "D" PER STANDARD SPECIFICATIONS SECTION 308-2.
9. IF A POWER POLE IS WITHIN THREE FEET OF THE SEWER, THE SEWER SHALL BE ENCASED, PER S-23, CASE II, TWO FEET ON EACH SIDE FROM THE POINT OF INTERFERENCE.
10. IF DURING THE COURSE OF CONSTRUCTION IT IS DETERMINED THAT THERE IS LESS THAN FOUR FEET OF COVER OVER THE TOP OF A MAIN LINE OR HOUSE LATERAL V.C.P. SEWER WHICH IS NOT INDICATED ON THE PLANS, THE PIPE SHALL BE ENCASED PER S-23, CASE II UNLESS OTHERWISE APPROVED BY THE COUNTY ENGINEER.
11. ALL JOINTS BETWEEN CAST IRON PIPE AND VITRIFIED CLAY PIPE SHALL BE MADE WITH A RUBBER SLEEVE JOINT, TYPE "C" OR "D", WITH BUSHING IF NECESSARY PER STANDARD SPECIFICATIONS, SECTION 308-2.
12. SEWERS TO BE TESTED FOR LEAKAGE PER SECTION 308-1-5.6 OF THE STANDARD SPECIFICATIONS AND SPECIAL PROVISIONS.
13. REINFORCE ALL TRENCHES WITHIN PAVED AREAS TO MEET L.A. COUNTY ROAD DEPT. OR CALIFORNIA STATE HIGHWAY REQUIREMENTS IN ACCORDANCE WITH PERMITS.
14. FULL COMPLIANCE WITH SECTION 306-1-5.6 OF THE SPECIAL PROVISIONS WILL BE REQUIRED FOR BACKFILL IN STREETS. CERTIFICATION OF BACKFILL COMPACTION AND SAND EQUIVALENTS BY A QUALIFIED, REGISTERED TESTING LABORATORY SHALL BE PROVIDED BY THE CONTRACTOR PRIOR TO THE ISSUANCE OF A CERTIFICATE OF PARTIAL ACCEPTANCE.
15. SPECIAL BACKFILL: (SPECIAL DESIGNATED AREAS)  
 A- BACKFILL TRENCH AND REPLACE OTHER EXISTING REMOVED SO AS TO ACHIEVE THE NATURAL OR FINISHED GRADES AND SLOPES SHOWN ON THE GRADING PLAN ATTACHED FOR THIS TRACT  
 (Continued left hereon)

THE FOLLOWING LATEST REVISED STANDARD PLANS ON FILE IN THE OFFICE OF THE COUNTY ENGINEER SHALL APPLY IN THE CONSTRUCTION OF THIS PROJECT.

LEGEND	NO.
MINIMUM PUBLIC SAFETY REQUIREMENTS	S-1
BRICK MANHOLE	S-2
STANDARD MANHOLE STEP	S-3
BEDDING FOR SEWER PIPE	S-4
CRADLING AND ENCASEMENT	S-5
WYE OR TEE SUPPORT	S-6
ALLOWABLE TRENCH WIDTHS	S-7
LOCKING MANHOLE FRAME AND COVER	S-8
NON-REINFORCED PRECAST CONCRETE MANHOLE	S-9
TEAF MANHOLE	S-10
TEAF MANHOLE CASTING	S-11

COUNTY OF LOS ANGELES, CALIFORNIA  
 COUNTY ENGINEER JOHN D. PARKHURST, CHIEF ENGINEER  
 APPROVED *[Signature]* 3/19/77 APPROVED *[Signature]* 3/19/77  
 REGIONAL ENGINEER OFFICE ENGINEER  
 CHECKED *[Signature]* 3/19/77  
 REG. C. E. NO. 16883  
 WHITTIER BLDG. DIST. 11 J.N. 0250.02

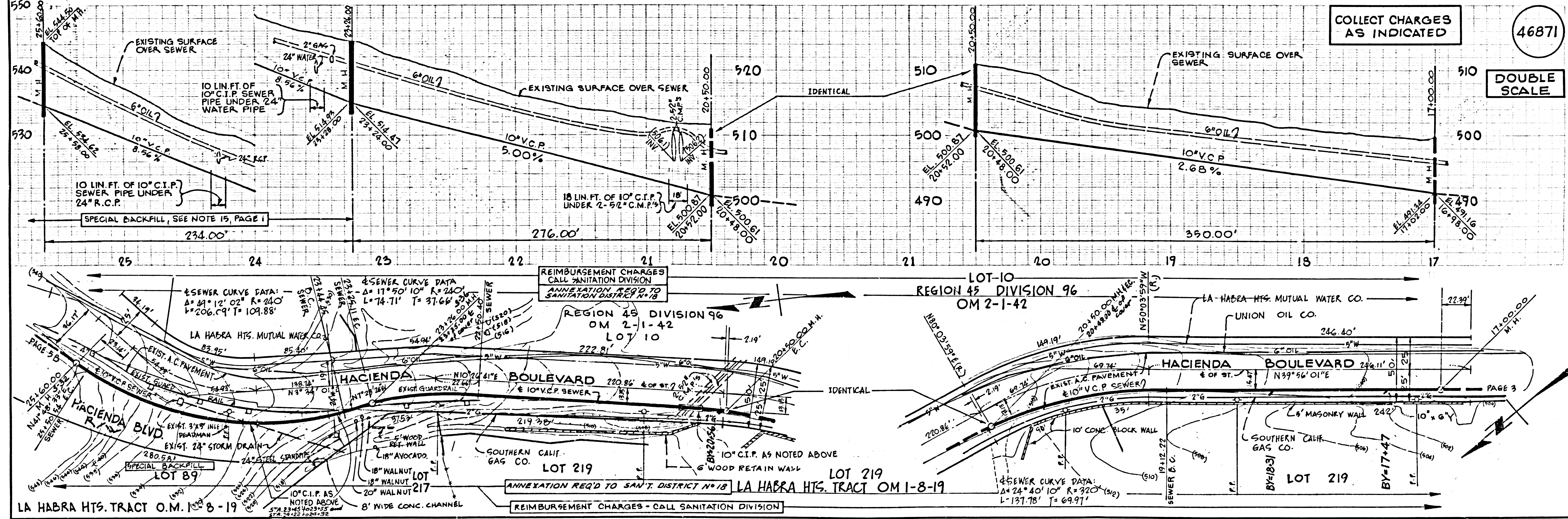
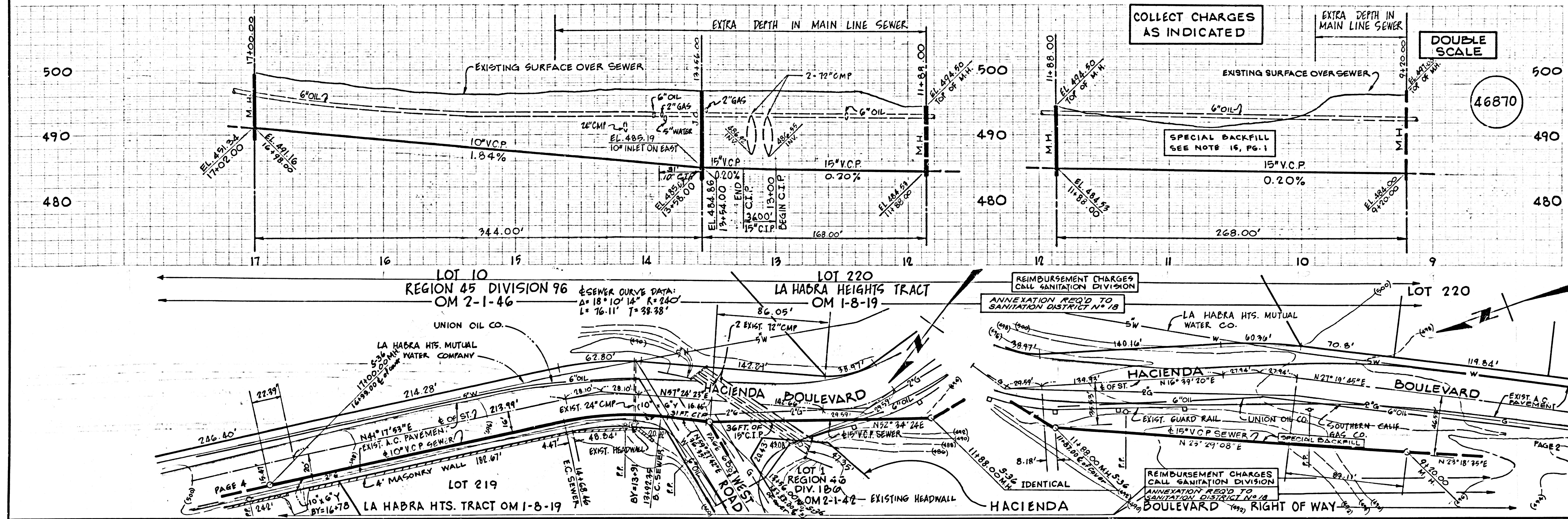
P. C. 9282 PAGE 2

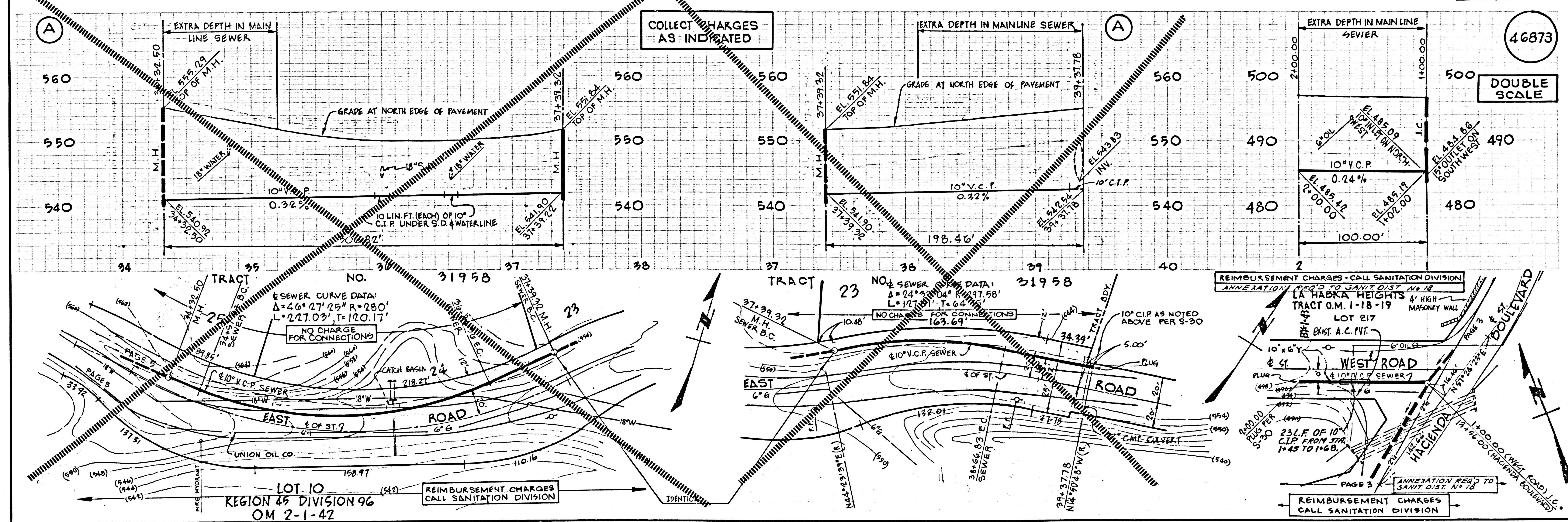
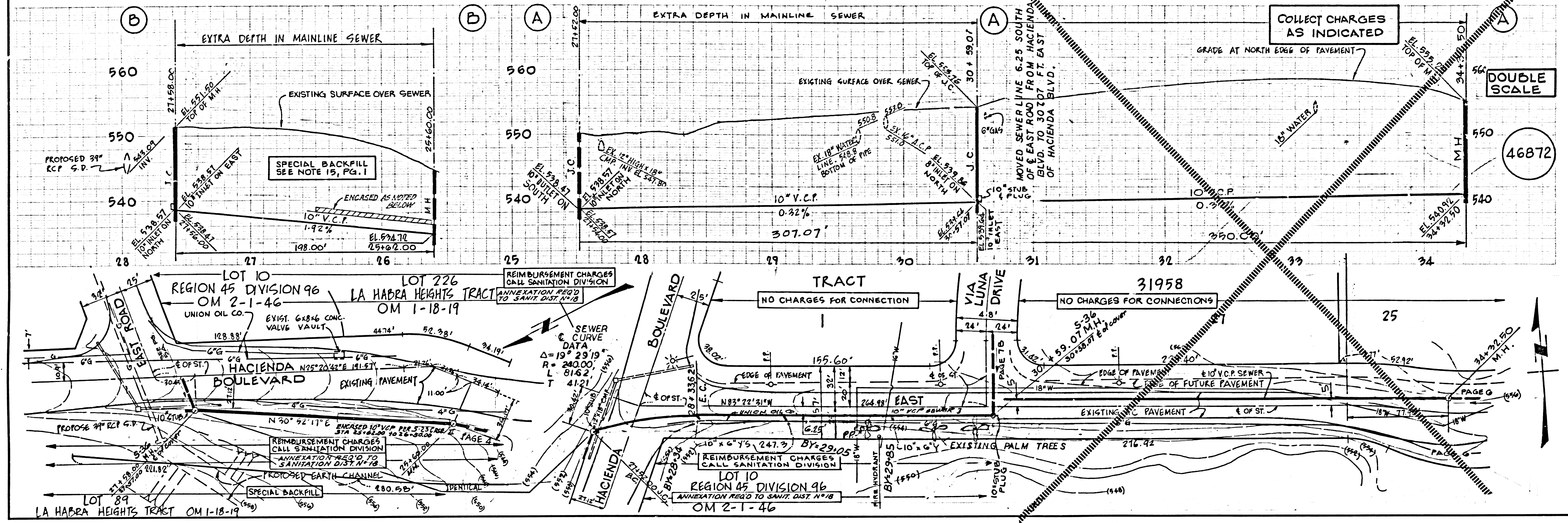


COLLECT CHARGES  
 AS INDICATED

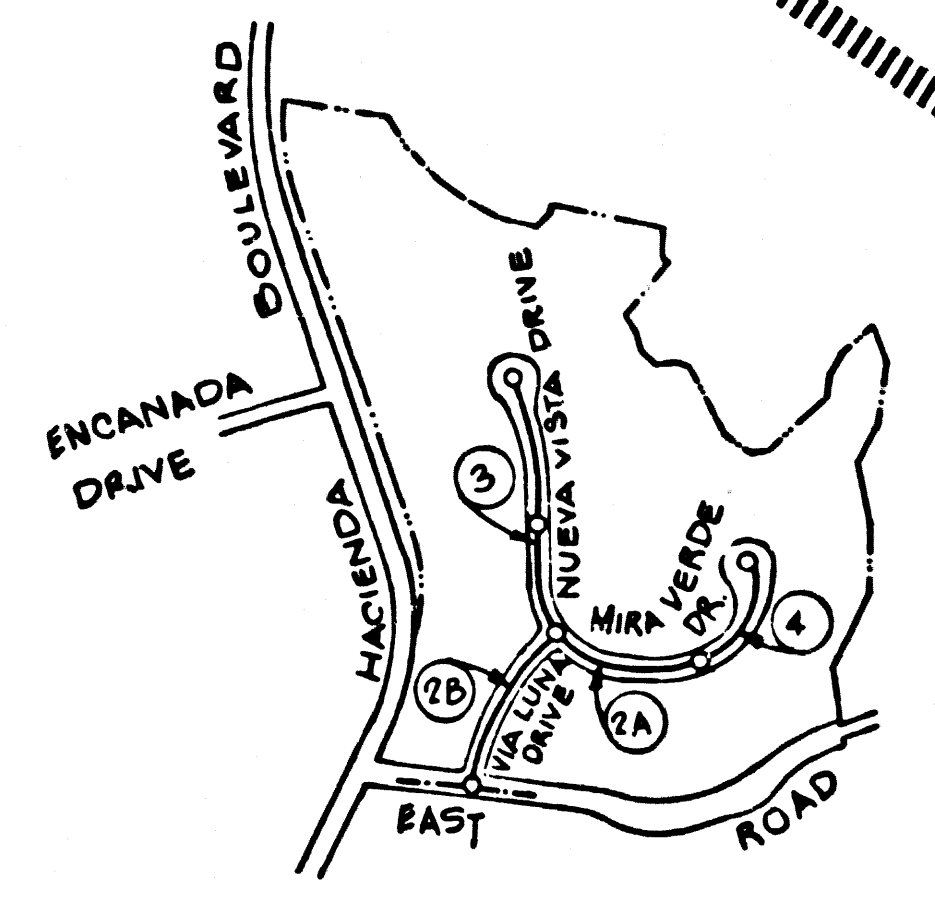
46869

DOUBLE  
 SCALE





B.M. B.G. 1665 ELEV. 555.235  
 1 FT. IN W. END CONC. STEP TO OFFICE @ S.E.  
 FOR HACIENDA BOULEVARD AND EAST  
 ROAD SOFT. E. & 40 FT. S. & INT. MKD. (B.M.)  
 BASSLINE QUAD. 19 65



INDEX MAP  
 SCALE = 1" = 600'  
 NO. 9282A

- GENERAL NOTES:**
- ELEVATIONS ARE IN FEET ABOVE U.S.C. & G.S. SEA LEVEL DATUM OF 1929.
  - NO REVISIONS SHALL BE MADE IN THESE PLANS WITHOUT THE APPROVAL OF THE COUNTY ENGINEER.
  - THE REPRESENTATIVE OF THE COUNTY ENGINEER WILL SURVEY OR LAY OUT ANY PORTION OF THE WORK.
  - CLASSES TO WHICH THIS IMPROVEMENT IS TO BE CONSTRUCTED ARE SHOWN ON PLANS AND PROFILES. GRADE POINTS FOR TOP OF CURBS, TOP OF LINE OF STREETS, OR CENTER LINE OF ALLEYS ARE SHOWN BY CIRCLES ON PROFILES. AT ALL POINTS BETWEEN DESIGNATED POINTS THE GRADE SHALL BE ESTABLISHED SO AS TO CONFORM TO A STRAIGHT LINE DRAWN BETWEEN SAID DESIGNATED POINTS.
  - THE PRIVATE ENGINEER SHALL FURNISH THE COUNTY ENGINEER WITH GRADE SHEETS AND STATIONING FOR ALL HOUSE LATERALS AND "T" OR "T" BRANCHES AND SHALL PROVIDE STAKES FOR THEM AT THEIR PROPER LOCATIONS WITH STATIONING PLAINLY MARKED. ALL HOUSE LATERALS SHALL BE CONSTRUCTED IN A STRAIGHT ALIGNMENT AT RIGHT ANGLES FROM THE MAIN LINE SEWER EXCEPT AS SHOWN ON THE PLANS. HOUSE LATERALS FROM CHIMNEYS SHALL NOT HAVE AN ANGLE OF LESS THAN 45° WITH THE MAIN LINE SEWER. ANY CHANGE IN ALIGNMENT SHALL BE REQUESTED IN WRITING BY THE PRIVATE ENGINEER.
  - THE PRIVATE ENGINEER SHALL FURNISH THE COUNTY ENGINEER WITH THE LATERAL DEPTH AT THE PROPERTY LINE BELOW THE TOP OF CURB ELEVATION FOR EACH HOUSE LATERAL ON THE GRADE SHEET.
  - BEFORE WORK CAN BE STARTED, THE CONTRACTOR SHALL OBTAIN A PERMIT TO EXCAVATE IN COUNTY STREETS FROM THE L.A. COUNTY ROAD DEPT., DISTRICT OFFICE NO. \_\_\_\_\_ AND PAY A FEE TO THE COUNTY ENGINEER, REGIONAL OFFICE TO COVER THE COST OF CONSTRUCTION INSURANCE AND RECORD PLANS.
  - IF WORK IS TO BE DONE IN A STATE HIGHWAY, A PERMIT MUST BE OBTAINED FROM THE STATE OF CALIFORNIA, DIVISION OF HIGHWAYS, 120 SOUTH SPRING STREET, LOS ANGELES 35, CALIFORNIA.
  - APPROVAL OF THIS PLAN BY THE COUNTY OF LOS ANGELES DOES NOT CONSTITUTE REPRESENTATION AS TO THE ACCURACY OF THE LOCATION OF OR THE EXISTENCE OR NON-EXISTENCE OF ANY UNDERGROUND UTILITIES OR STRUCTURE WITHIN THE LIMITS OF THIS PROJECT. THIS NOTE APPLIES TO ALL PAGES.
  - REFER TO SECTION 7.11.4.1 OF THE STANDARD SPECIFICATIONS, REGARDING SAFETY SIGNALS.

- CONSTRUCTION NOTES:**
- WORK SHALL BE CONSTRUCTED ACCORDING TO THE STANDARD SPECIFICATIONS FOR PUBLIC WORKS CONSTRUCTION 1970 EDITION WITH \_\_\_\_\_ SUPPLEMENTS AND COUNTY ENGINEER SPECIAL PROVISIONS FOR THE CONSTRUCTION OF SANITARY SEWERS DATED \_\_\_\_\_ AND SHALL BE PROSECUTED ONLY IN THE PRESENCE OF THE COUNTY ENGINEER OR HIS REPRESENTATIVE.
  - THE CONTRACTOR SHALL NOTIFY THE CONSTRUCTION DIVISION BY TELEPHONE, TELEVISION 9-4747, EXT. 331, AT LEAST TWENTY-FOUR HOURS BEFORE STARTING ANY WORK UNDER THIS CONTRACT.
  - HOUSE LATERALS TO BE CONSTRUCTED WITH INVERTS AT PROPERTY LINE 8 FEET BELOW CURB GRADE EXCEPT AS NOTED.
  - WYE OR TEE BRANCHES MAY BE USED FOR CONNECTIONS TO MAINLINE SEWERS EXCEPT AS NOTED.
  - ALL STRUCTURES SHALL BE EITHER BRICK MANHOLES PER S-3 OR PRECAST CONCRETE MANHOLES PER S-36, EXCEPT AS NOTED.
  - PROVIDE STAKES ON THE PROPERTY LINE OR PROPERTY LINES PRODUCED AT 45° ANGLES TO THE SEWER LINE AT THE CENTER LINE OF EACH MANHOLE.
  - MANHOLE TOPS IN UNIMPROVED RIGHTS OF WAY TO BE SIX INCHES FINISHED GRADE.
  - VITRIFIED CLAY PIPE JOINTS SHALL BE TYPE "D", "F", OR "G" PER STANDARD SPECIFICATIONS SECTION 306-3.
  - IF A POWER POLE IS WITHIN THREE FEET OF THE SEWER, THE SEWER SHALL BE ENCASED, PER S-23, CASE II, TWO FEET ON EACH SIDE FROM THE POINT OF INTERFERENCE.
  - IF DURING THE COURSE OF CONSTRUCTION IT IS DETERMINED THAT THERE IS LESS THAN FOUR FEET OF COVER OVER THE TOP OF A MAIN LINE OR HOUSE LATERAL V.C.P. SEWER WHICH IS NOT INDICATED ON THE PLANS, THE PIPE SHALL BE ENCASED PER S-23, CASE II UNLESS OTHERWISE APPROVED BY THE COUNTY ENGINEER.
  - ALL JOINTS BETWEEN CAST IRON AND VITRIFIED CLAY PIPE SHALL BE MADE WITH A RUBBER SLEEVE JOINT, TYPE "C" OR "D", WITH BUSHING IF NECESSARY, PER STANDARD SPECIFICATIONS, SECTION 306-3.
  - SEWERS TO BE TESTED FOR LEAKAGE PER SECTION 304-3.2.2 OF THE STANDARD SPECIFICATIONS AND SPECIAL PROVISIONS.
  - RESURFACE ALL TRENCHES WITHIN PAVED AREAS TO MEET L.A. COUNTY ROAD DEPT. OR CALIFORNIA STATE HIGHWAY REQUIREMENTS IN ACCORDANCE WITH PERMITS.
  - PAUL COMPACTOR WITH SECTION 306-1.9.3 OF THE SPECIAL PROVISIONS WILL BE REQUIRED FOR BACKFILL IN STREETS. CERTIFICATION OF BACKFILL COMPACTION AND SAND EQUIVALENTS BY A QUALIFIED, REGISTERED TESTING LABORATORY SHALL BE PROVIDED BY THE CONTRACTOR PRIOR TO THE ISSUANCE OF A CERTIFICATE OF PARTIAL ACCEPTANCE.

PROFILE, ALIGNMENT AND GRADE OF  
**SANITARY SEWERS**  
 TO BE CONSTRUCTED IN  
**TRACT NO. 31958**

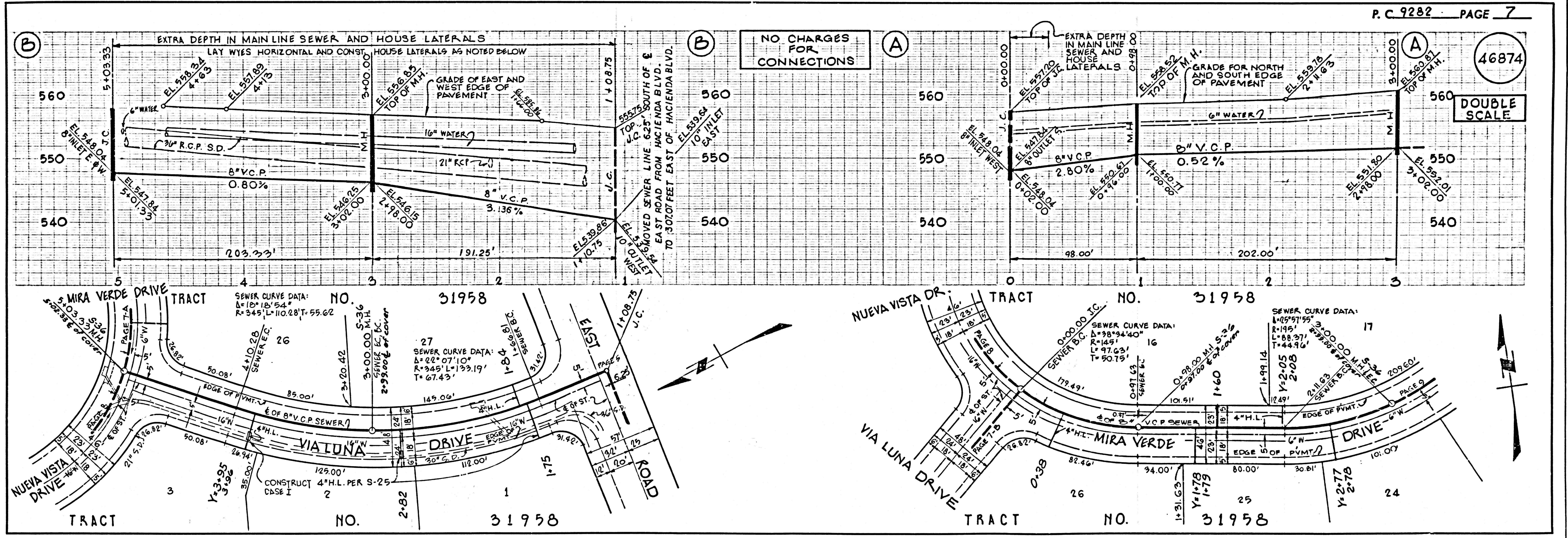
PRIVATE CONTRACT NO. 9282

W.S.  
 SHEETS: \_\_\_\_\_ PAGES  
 SCALE: HORIZ. 1" = 80'  
 VERT. 1" = 4'  
 DATE: OCTOBER, 1976  
 PREPARED IN THE OFFICES OF  
 COOPER-SHERMAN ENGINEERS CO.  
 10940 WILSHIRE BOULEVARD, SUITE 702  
 LOS ANGELES, CALIFORNIA 90024 PHONE (213) 473-4501  
 BY: \_\_\_\_\_ REG. C. E. No. 8332

THE FOLLOWING LATEST REVISED STANDARD PLANS ON FILE IN THE OFFICE OF THE COUNTY ENGINEER SHALL APPLY IN THE CONSTRUCTION OF THIS PROJECT.

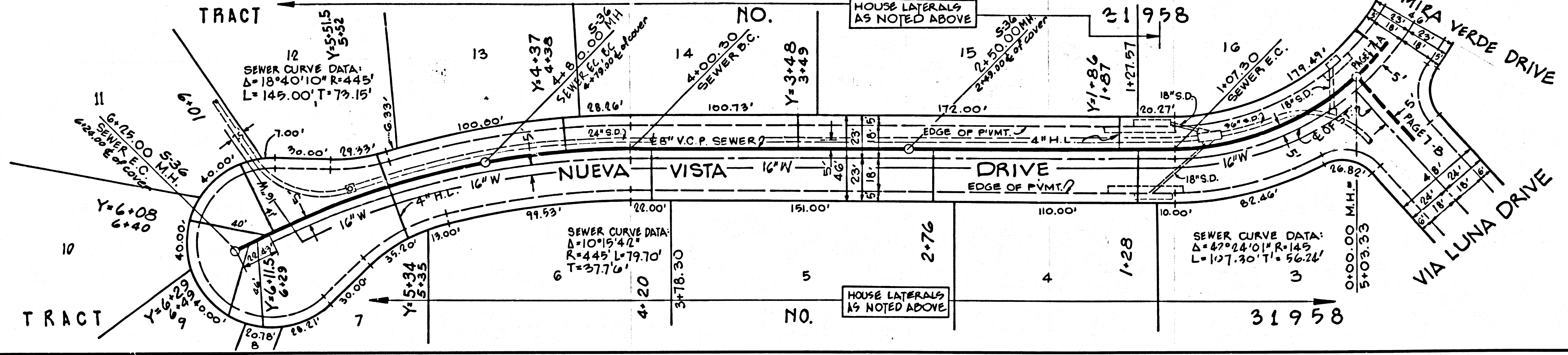
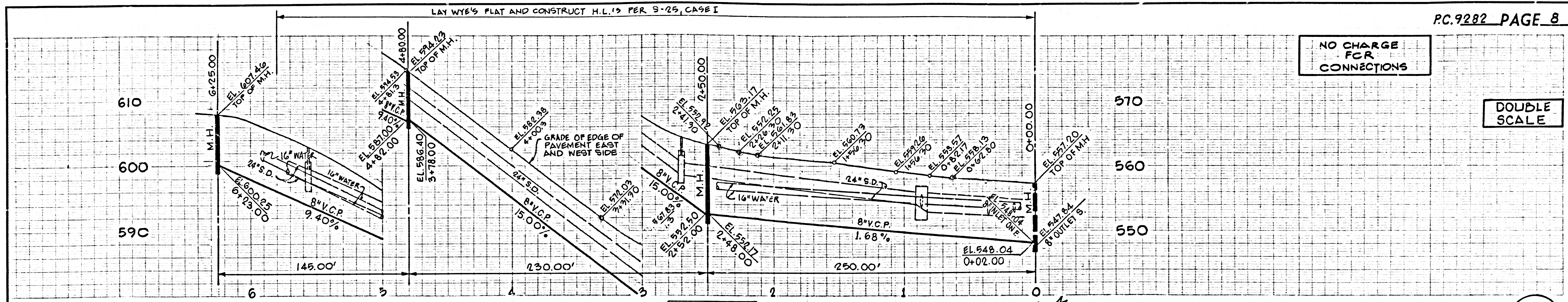
LEGEND	SECTION
MINIMUM PUBLIC SAFETY REQUIREMENTS	S-1
BRICK MANHOLE	S-3
STANDARD MANHOLE STEP	S-17
BEDDING FOR SEWER PIPE	S-21
CRABBING AND ENCASEMENT	S-23
WYE OR TEE SUPPORT	S-26
LOCATING MANHOLE FRAMES	S-28
NON-BEHAVIOR PRECAST CONCRETE MANHOLE	S-36

COUNTY OF LOS ANGELES, CALIFORNIA  
 COUNTY ENGINEER JOHN D. HURST, CHIEF ENGINEER  
 DIST. NO. \_\_\_\_\_  
 APPROVED \_\_\_\_\_ REGIONAL ENGINEER DATE \_\_\_\_\_  
 CHECKED \_\_\_\_\_ DATE \_\_\_\_\_  
 REG. C.E. NO. \_\_\_\_\_  
 BLDG. DIST. \_\_\_\_\_



NO CHARGE FOR CONNECTIONS

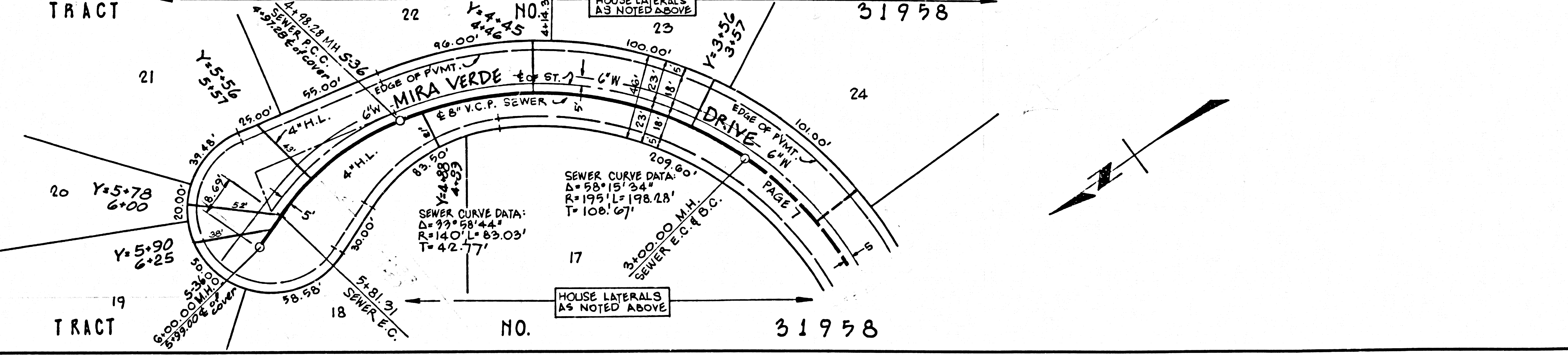
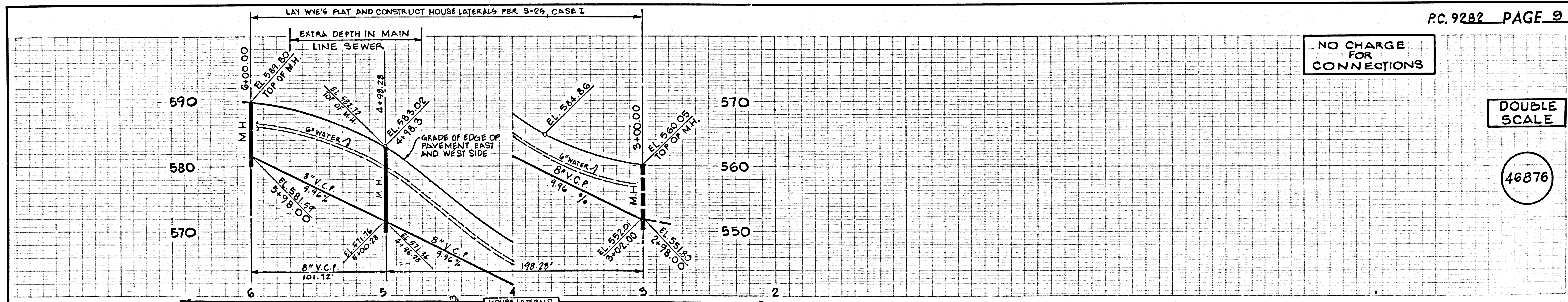
DOUBLE SCALE



46875

NO CHARGE FOR CONNECTIONS

DOUBLE SCALE



46876