

B.M. 89 3952 ELEV. 312.415 F.B. 3303-26
Ed. Dept. B.M. tag 1' S.
BGR, 71' S. and 10' W. of
Int. Amar Rd. & Puente Ave.
PUENTE QUAD 1970

NOTICE TO CONTRACTOR

PRIOR TO TRENCH EXCAVATION, THE CONTRACTOR SHALL SUBMIT TO AND OBTAIN APPROVAL FROM THE CITY ENGINEER OF A DETAILED PLAN SHOWING THE DESIGN OF SHORING, BRACING, SLOPING, OR PROVISIONS OF WORKER PROTECTION FROM THE HAZARD OF CAVING GROUND. IF SUCH PLAN VARIES FROM THE SHORING SYSTEM STDS. ESTABLISHED BY THE CONSTRUCTION SAFETY ORDERS, IT SHALL BE PREPARED BY A CIVIL OR STRUCTURAL ENGINEER.

THE EXISTENCE AND LOCATION OF ANY UNDERGROUND UTILITY OR STRUCTURES SHOWN ON THESE PLANS ARE OBTAINED BY A SEARCH OF AVAILABLE RECORDS. TO THE BEST OF OUR KNOWLEDGE, THERE ARE NO EXISTING UTILITIES EXCEPT AS SHOWN.

THE CONTRACTOR IS REQUIRED TO TAKE PRECAUTIONARY MEASURES TO PROTECT THE UTILITY LINES SHOWN AND ANY OTHER LINES NOT OF RECORD OR NOT SHOWN ON THIS DRAWING.

NO REVISIONS SHALL BE MADE ON THIS DRAWING WITHOUT THE APPROVAL OF THE CITY ENGINEER.

BEFORE BREAKING INTO OR CONSTRUCTION ON A COUNTY SANITATION DISTRICT SEWER AND PRIOR TO FINAL ACCEPTANCE OF THE PROJECT SANITATION DISTRICT INSPECTOR SHALL BE NOTIFIED BY PHONE 962-8900, SO THAT REQUIRED INSPECTION CAN BE MADE.

NO CONNECTION FOR THE DISPOSAL OF INDUSTRIAL WASTES SHALL BE MADE TO SEWERS SHOWN ON THESE DRAWINGS UNTIL A PERMIT FOR INDUSTRIAL WASTE WATER DISCHARGE HAS BEEN ISSUED BY THE SANITATION DISTRICTS FOR SAID CONNECTION.

GENERAL NOTES:

REFER TO SECTION 7-10-4.1 OF STANDARD SPECIFICATIONS REGARDING SAFETY ORDERS.
ALL MANHOLES SHALL BE EITHER BRICK PER S-3 OR PRECAST CONCRETE PER S-36, EXCEPT AS NOTED.
"T" OR "T" BRANCHES MAY BE USED FOR CONNECTIONS TO MAIN LINE SEWER, EXCEPT AS NOTED.
VITRIFIED CLAY PIPE JOINTS SHALL BE TYPE "D", "F", OR "G" PER SECTION 208-2 OF STANDARD SPECIFICATIONS.
ALL JOINTS BETWEEN CAST IRON PIPE AND VITRIFIED CLAY PIPE SHALL BE MADE WITH A RUBBER SLEEVE JOINT, TYPE "C" OR "D" WITH BUSHING IF NECESSARY PER SECTION 208-2 OF STANDARD SPECIFICATIONS.
SEWERS TO BE TESTED FOR LEAKAGE PER SECTION 306-1.4 OF STANDARD SPECIFICATIONS AND SPECIAL PROVISIONS.
IF A POWER POLE IS WITHIN THREE FEET OF THE SEWER, THE SEWER SHALL BE ENCASED, PER S-23 CASE II, TWO FEET ON EACH SIDE FROM THE POINT OF INTERFERENCE.

HOUSE LATERALS SHALL BE CONSTRUCTED WITH 1/2" RISE PER FOOT TO PROPERTY LINE.
INDICATES "T" OR "T" SHALL BE LAID HORIZONTAL AND HOUSE LATERAL SHALL BE CONSTRUCTED WITH 1/2" RISE PER FOOT TO PROPERTY LINE.
ALL HOUSE LATERALS SHALL BE CONSTRUCTED IN A STRAIGHT ALIGNMENT AT RIGHT ANGLES FROM THE MAIN LINE SEWER EXCEPT AS SHOWN ON THE PLANS. HOUSE LATERALS FROM CHIMNEYS SHALL NOT HAVE AN ANGLE OF LESS THAN 45 DEGREES WITH THE MAIN LINE SEWER.
ALL CONCRETE CROSS GUTTERS, CURBS, GUTTERS, PAVEMENT, AND DRIVEWAYS SHALL BE TUNNELED OR JACKED PER LOS ANGELES COUNTY ROAD DEPARTMENT REQUIREMENTS.

STREET RESURFACING:

STREET RESURFACING METHODS SHALL BE IN ACCORDANCE WITH SECTION 306-1.8 OF THE SPECIAL PROVISIONS.
FINAL STREET RESURFACING IN ANY LOCATION SHALL BE COMPLETED WITHIN 30 DAYS AFTER COMPLETION OF TRENCH BACKFILL.
THE RESURFACED AREA SHALL BE SEALED WITH 2" EMULSION AND 1/2" INCH CRUSHED ROCK.
RESURFACING SCHEDULE: RESURFACE TRENCH WITHIN PAVED AREA WITH TYPE 5 ASPHALTIC CONCRETE 5" INCHES IN THICKNESS ON 1/2" INCHES OF AGGREGATE BASE MATERIAL.

THE FOLLOWING LATEST REVISED STANDARD PLANS ON FILE IN THE OFFICE OF CITY ENGINEER SHALL APPLY IN THE CONSTRUCTION OF THIS PROJECT:

Table with 2 columns: Item description and Reference number (S-1 to S-36).

THE CONTRACTOR SHALL OBTAIN THE FOLLOWING PERMITS PRIOR TO CONSTRUCTION:

- 1. LOS ANGELES COUNTY ROAD DEPARTMENT (SEE EXEMPT)
- 2. CITY OF LA PUENTE CONSTRUCTION PERMIT (SEE EXEMPT)

THE UNDERGROUND UTILITY COMPANIES WITHIN THE LIMITS OF THIS PROJECT ARE AS FOLLOWS:

- (1)
- (2)
- (3)

CASH CONTRACT NO. 9287
REFERENCE ONLY - LA PUENTE P.C. 76-3
SANITARY SEWERS

CONSTRUCTED FOR
SUNKIST LIBRARY
IN
PUENTE AVENUE 46381
1 SHEET 2 PAGES

SCALE VERT. 1" = 4'
HORIZ. 1" = 40'

JULY, 1976

CITY OF LA PUENTE
COUNTY OF LOS ANGELES, CALIFORNIA
CITY ENGINEER

APPROVED [Signature] 8-2-76
ASSE. SANITATION DIVISION ENGINEER, DATED

DESIGNED [Signature] 8-2-76
S.E. C. E. NO. 10443 DATED

CITY OF LA PUENTE
APPROVED [Signature] 8-3-76 JOHN D. PARKHURST
SUBJECT TO ZONING, DATE CHIEF ENGINEER OF COUNTY
APPROVAL: SANITATION DISTRICT NO. 18

APPROVED [Signature]
OFFICE ENGINEER

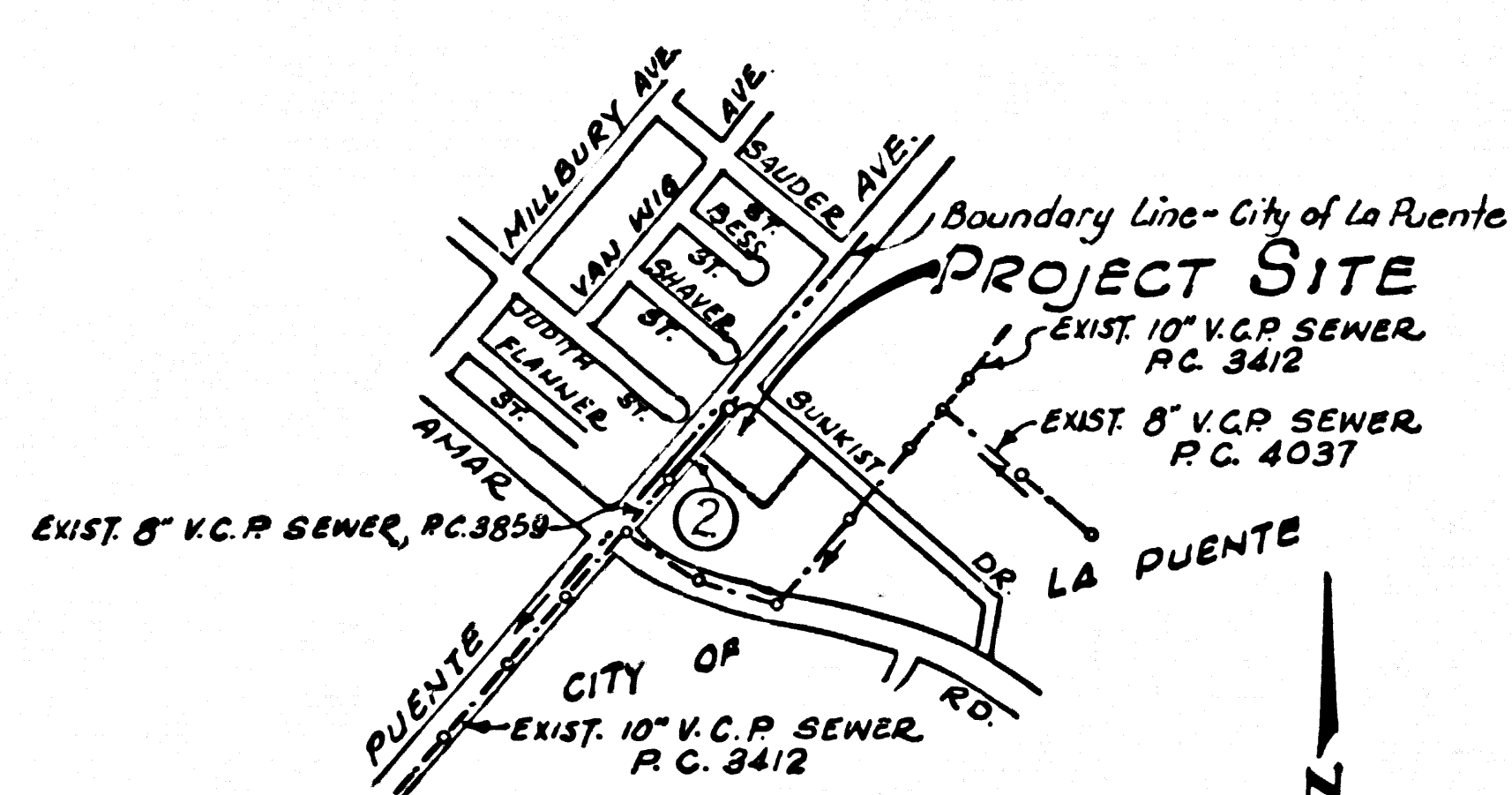
NOTES:

WORK SHALL BE CONSTRUCTED ACCORDING TO THE STANDARD SPECIFICATIONS FOR PUBLIC WORKS CONSTRUCTION 1972 EDITION WITH 1974 SUPPLEMENTS AND COUNTY ENGINEER SPECIAL PROVISIONS FOR THE CONSTRUCTION OF SANITARY SEWERS DATED MARCH 1, 1974 AND SHALL BE PROSECUTED ONLY IN THE PRESENCE OF THE CITY ENGINEER.

THE CONTRACTOR SHALL NOTIFY THE DEPT. DIVISION BY TELEPHONE 8747283 AT LEAST 24 HOURS BEFORE STARTING ANY WORK UNDER THIS CONTRACT.
GRADES TO WHICH THIS IMPROVEMENT IS TO BE CONSTRUCTED ARE SHOWN ON PLANS AND PROFILES. GRADE POINTS FOR TOP OF CURB, CENTER LINE OF STREET OR CENTER LINE OF ALLEY ARE SHOWN BY CIRCLES ON PROFILES AT ALL POINTS BETWEEN DESIGNATED POINTS. THE GRADE SHALL BE ESTABLISHED SO AS TO CONFORM TO A STRAIGHT LINE DRAWN BETWEEN SAID DESIGNATED POINTS.
ELEVATIONS ARE IN FEET ABOVE U.S.C. & G.S. 36° LEVEL DATUM OF 1929.
THIS DRAWING AND THE DATA HEREON ARE HEREBY MADE A PART OF THE SPECIFICATIONS.

Table with columns: LAYOUT, TRACED, F.B., T. MONDA, July 1976, CHECKED, MAINTENANCE, A.B., W.S. 46, LA PUENTE, BUILDING DISTRICT NO. 2.02.

J. N. 0815.89



NOTE: NUMBER IN CIRCLE INDICATE PAGE NUMBER.

INDEX MAP
SUNKIST LIBRARY - C.C. 9287
SCALE: 1" = 600'

COLLECT CHARGES AS INDICATED

46382

