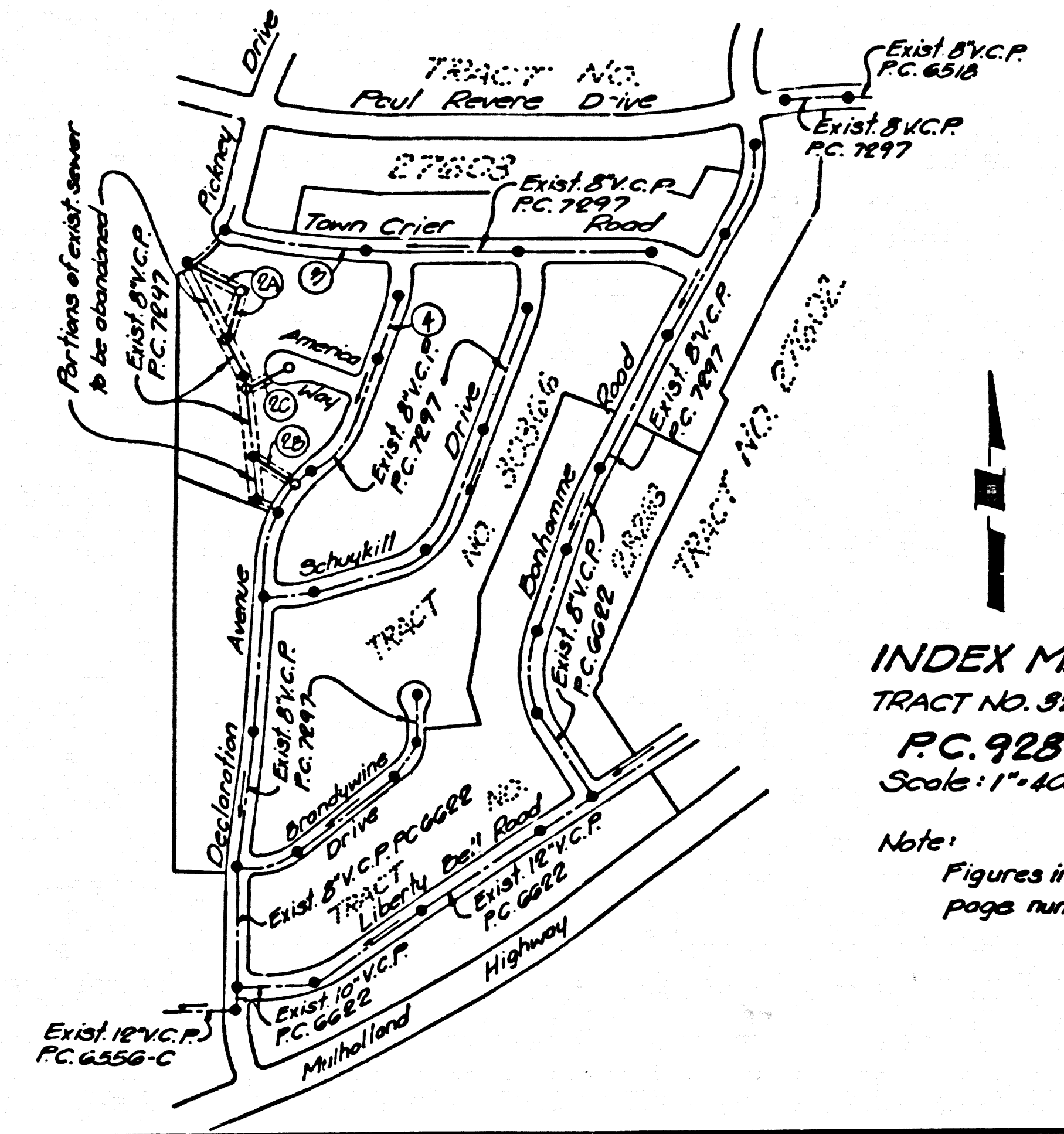


TRACT NO 32675 PRIVATE CONTRACT NO. 9289 W.S. 60 2 SHEETS, 4 PAGES SCALE: VERT. 1"=8' HORIZ. 1"=40' JULY, 1970 PREPARED IN THE OFFICES OF TIERRA ENGINEERING 10144 Oxford St. Torrance, Calif. 90503 REG. C. E. No. 19799

46,028

B.M. BY 7521 ELEV. 1155.291 R.O. B.M. 10g in curb 2 ft. west of B.C.R. 207f South and 78ft. West of E. Int. Mulholland Hwy. and Paul Revere Dr. Malibu QUAD. 1972

- GENERAL NOTES: 1. ELEVATIONS ARE IN FEET ABOVE U.S.C. & G.S. SEA LEVEL DATUM OF 1929. 2. NO REVISIONS SHALL BE MADE IN THESE PLANS WITHOUT THE APPROVAL OF THE COUNTY ENGINEER. 3. NO REPRESENTATIVE OF THE COUNTY ENGINEER WILL SURVEY OR LAY OUT ANY PORTION OF THE WORK. 4. GRADES TO WHICH THIS IMPROVEMENT IS TO BE CONSTRUCTED ARE SHOWN ON PLANS AND PROFILES. GRADE POINTS FOR TOP OF CURBS, CENTER LINE OF ALLEYS ARE SHOWN BY CIRCLES ON PROFILES. AT ALL POINTS BETWEEN DESIGNATED POINTS THE GRADE SHALL BE ESTABLISHED SO AS TO CONFORM TO A STRAIGHT LINE DRAWN BETWEEN SAID DESIGNATED POINTS. 5. THE PRIVATE ENGINEER SHALL FURNISH THE COUNTY ENGINEER WITH GRADE SHEETS AND STATIONING FOR ALL HOUSE LATERALS AND "T" OR "Y" BRANCHES AND SHALL PROVIDE STAKES FOR THEM AT THEIR PROPER LOCATIONS WITH STATIONING PLAINLY MARKED. ALL HOUSE LATERALS SHALL BE CONSTRUCTED IN A STRAIGHT ALIGNMENT AT RIGHT ANGLES FROM THE MAIN LINE SEWER EXCEPT AS SHOWN ON THE PLANS. HOUSE LATERALS FROM CHIMNEYS SHALL NOT HAVE AN ANGLE OF LESS THAN 45° WITH THE MAIN LINE SEWER. ANY CHANGE IN ALIGNMENT SHALL BE REQUESTED IN WRITING BY THE PRIVATE ENGINEER. 6. THE PRIVATE ENGINEER SHALL FURNISH THE HOUSE LATERAL DEPTH AT THE PROPERTY LINE BELOW THE TOP OF CURB ELEVATION FOR EACH HOUSE LATERAL ON THE GRADE SHEET. 7. BEFORE WORK CAN BE STARTED, THE CONTRACTOR MUST OBTAIN A PERMIT TO EXCAVATE IN COUNTY STREETS FROM THE L.A. COUNTY ROAD DEPT., DISTRICT OFFICE NO. 9... AND PAY A FEE TO THE COUNTY ENGINEER... AT THE VALLEJO REGIONAL OFFICE, TO COVER THE COST OF CONSTRUCTION INSPECTION AND RECORD PLANS. 8. IF WORK IS TO BE DONE IN A STATE HIGHWAY, A PERMIT MUST BE OBTAINED FROM THE STATE OF CALIFORNIA, DIVISION OF HIGHWAYS, 130 SOUTH SPRING STREET, LOS ANGELES, CALIFORNIA. 9. APPROVAL OF THIS PLAN BY THE COUNTY OF LOS ANGELES DOES NOT CONSTITUTE A REPRESENTATION AS TO THE ACCURACY OF THE LOCATION OF OR THE EXISTENCE OR NON-EXISTENCE OF ANY UNDERGROUND UTILITY PIPE, OR STRUCTURE WITHIN THE LIMITS OF THIS PROJECT. THIS NOTE APPLIES TO ALL PAGES. 10. REFER TO SECTION 7-18.4.3 OF THE STANDARD SPECIFICATIONS, REGARDING SAFETY ORDERS. 11. THE UNDERGROUND UTILITY COMPANIES WITHIN THE LIMITS OF THIS PROJECT ARE AS FOLLOWS: 1. LAS VIRGENES MUNICIPAL WATER DISTRICT 2. S.F. CAL. ELECTRIC CO. 3. S.F. CAL. GAS CO. 4. PACIFIC TELEPHONE 5. L.A. CO. FLOOD CONTROL DISTRICT 12. PRIOR TO ISSUANCE OF THE REQUIRED SEWER CONSTRUCTION PERMIT BY THE COUNTY ENGINEER THE CONTRACTOR SHALL OBTAIN A PERMIT TO EXCAVATE FROM THE STATE OF CALIFORNIA DIVISION OF INDUSTRIAL SAFETY.



INDEX MAP TRACT NO. 32675 P.C. 9289 Scale: 1"=100'

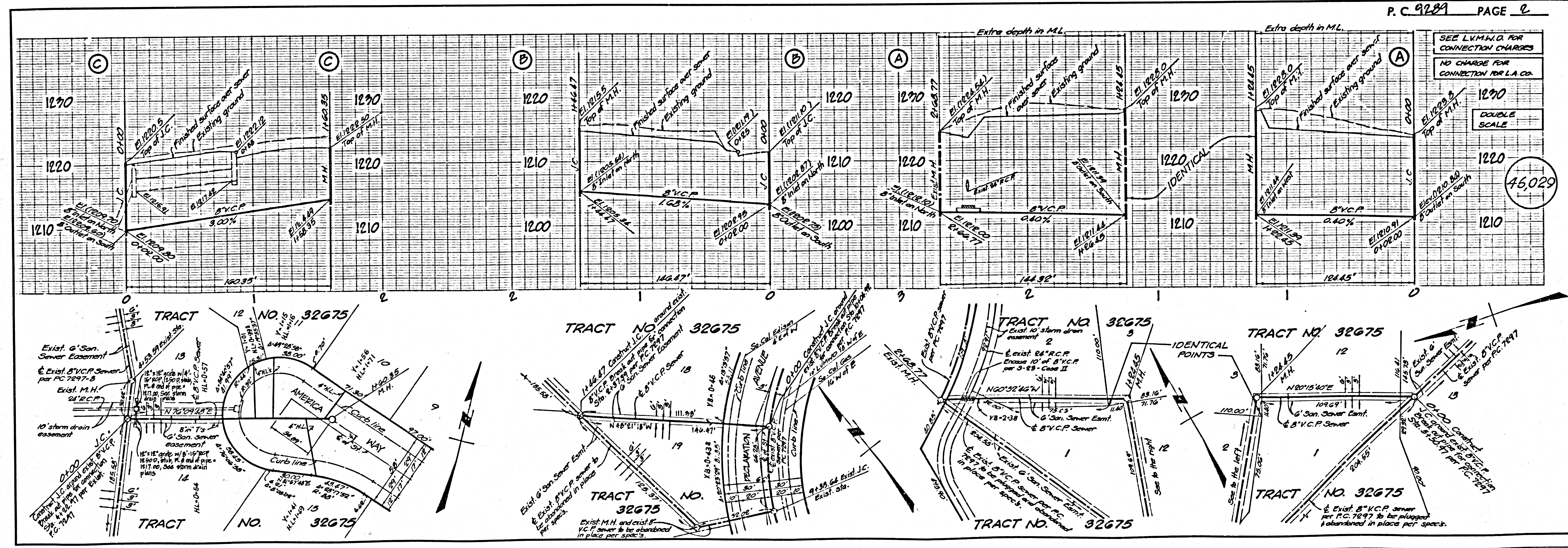
Note: Figures in circles indicate page numbers

COLLECT CHARGES AS INDICATED

- CONSTRUCTION NOTES: 1. WORK SHALL BE CONSTRUCTED ACCORDING TO THE STANDARD SPECIFICATIONS FOR PUBLIC WORKS CONSTRUCTION 1978 EDITION AND COUNTY ENGINEER SPECIAL PROVISIONS FOR THE CONSTRUCTION OF SANITARY SEWERS DATED SEP. 21, 1976... AND SHALL BE PROSECUTED ONLY IN THE PRESENCE OF THE COUNTY ENGINEER. 2. THE CONTRACTOR SHALL NOTIFY THE SECTION DIVISION BY TELEPHONE, (818) 774-7289, AT LEAST TWENTY-FOUR HOURS BEFORE STARTING ANY WORK UNDER THIS CONTRACT. 3. HOUSE LATERALS TO BE CONSTRUCTED WITH INVERTS AT PROPERTY LINE & FEET BELOW CURB GRADE EXCEPT AS NOTED. 4. WYE OR TEE BRANCHES MAY BE USED FOR CONNECTIONS TO MAINLINE SEWERS EXCEPT AS NOTED. 5. ALL STRUCTURES SHALL BE EITHER BRICK MANHOLES PER S-3 OR PRECAST CONCRETE MANHOLES PER S-36, EXCEPT AS NOTED. 6. PROVIDE STAKES ON THE PROPERTY LINE OR PROPERTY LINES PRODUCED AT RIGHT ANGLES TO THE SEWER LINE AT THE CENTER LINE OF EACH MANHOLE. 7. MANHOLE TOPS IN UNIMPROVED RIGHTS OF WAY TO BE SIX INCHES ABOVE FINISHED GRADE. 8. WITHFER CLAY PIPE JOINTS SHALL BE TYPE "T", OR "D" PER STANDARD SPECIFICATIONS SECTION 208-2. 9. IF A POWER POLE IS WITHIN THREE FEET OF THE SEWER, THE SEWER SHALL BE ENCASED, PER S-23, CASE II, TWO FEET ON EACH SIDE FROM THE POINT OF INTERFERENCE. 10. IF DURING THE COURSE OF CONSTRUCTION IT IS DETERMINED THAT THERE IS LESS THAN FOUR FEET OF COVER OVER THE TOP OF A MAIN LINE OR HOUSE LATERAL V.C.P. SEWER WHICH IS NOT INDICATED ON THE PLANS, THE PIPE SHALL BE ENCASED PER S-23, CASE II UNLESS OTHERWISE APPROVED BY THE COUNTY ENGINEER. 11. ALL JOINTS BETWEEN CAST IRON PIPE AND WITHFER CLAY PIPE SHALL BE MADE WITH A RUBBER SLEEVE JOINT, TYPE "C" OR "D", WITH BUSHING IF NECESSARY PER STANDARD SPECIFICATIONS, SECTION 208-2. 12. SEWERS TO BE AIR PROTECTED THROUGH PIPE LEAKAGE PER SECTION 208-14 OF THE STANDARD SPECIFICATIONS AND RESURFACE ALL TRENCHES WITHIN PAVED AREAS TO MEET L.A. COUNTY ROAD DEPT. OF CALIFORNIA STATE HIGHWAY REQUIREMENTS IN ACCORDANCE WITH PERMITS. 13. FULL COMPLIANCE WITH SECTION 208-1.5 OF THE SPECIAL PROVISIONS WILL BE REQUIRED FOR BACKFILL IN STREETS. CERTIFICATION OF BACKFILL COMPACTION AND SAND EQUIVALENTS BY A QUALIFIED, REGISTERED TESTING LABORATORY SHALL BE PROVIDED BY THE PERMITTEE PRIOR TO THE ISSUANCE OF A CERTIFICATE OF PARTIAL ACCEPTANCE. 14. ALL PORTIONS OF SEWERS SHALL BE ABANDONED OR REMOVED IN ACCORDANCE WITH SEC. 909-9.1 OF THE STANDARD SPECIFICATIONS. 15. CONTRACTOR SHALL MAINTAIN SEWER SERVICE AT ALL TIMES DURING CONSTRUCTION OF MAIN LINE SEWER AND HOUSE LATERAL RECONNECTIONS WHEN APPLICABLE.

LEGEND table listing items such as MINIMUM PUBLIC SAFETY REQUIREMENTS, BRICK MANHOLE, STANDARD MANHOLE STOP, BEDDING FOR SEWER PIPE, etc., with corresponding page numbers.

COUNTY OF LOS ANGELES, CALIFORNIA STEPHEN J. KOONCE, COUNTY ENGINEER LAS VIRGENES MUNICIPAL WATER DISTRICT APPROVED [Signature] 12/20/70 REGIONAL ENGINEER (DATE) APPROVED [Signature] 1/13/71 GENERAL MANAGER, CHRYSLER FINANCIAL CORP. REG. P.C.E. NO. [Signature] CHECKED [Signature] 12-17-70 (DATE) REG. C.E. NO. 12166 CALABASAS BLDG. DIST. #1 J.N. 0230.02



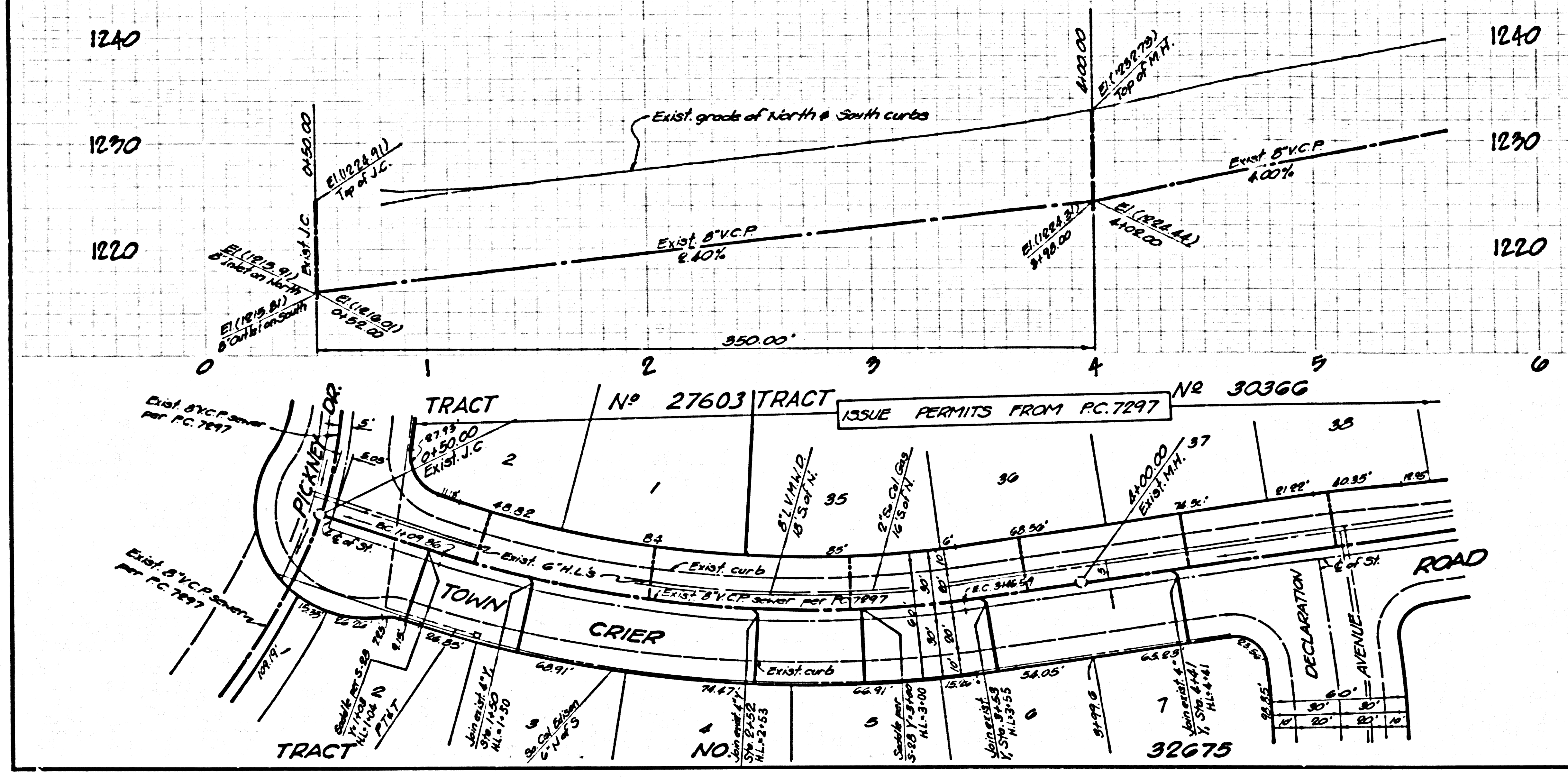
46,028



DOUBLE SCALE

SEE L.V.M.N.D. FOR CONNECTION CHARGES  
NO CHARGE FOR CONNECTION FOR L.A. CO.

46,030



DOUBLE SCALE

SEE L.V.M.N.D. FOR CONNECTION CHARGES  
NO CHARGE FOR CONNECTION FOR L.A. CO.

46,031

