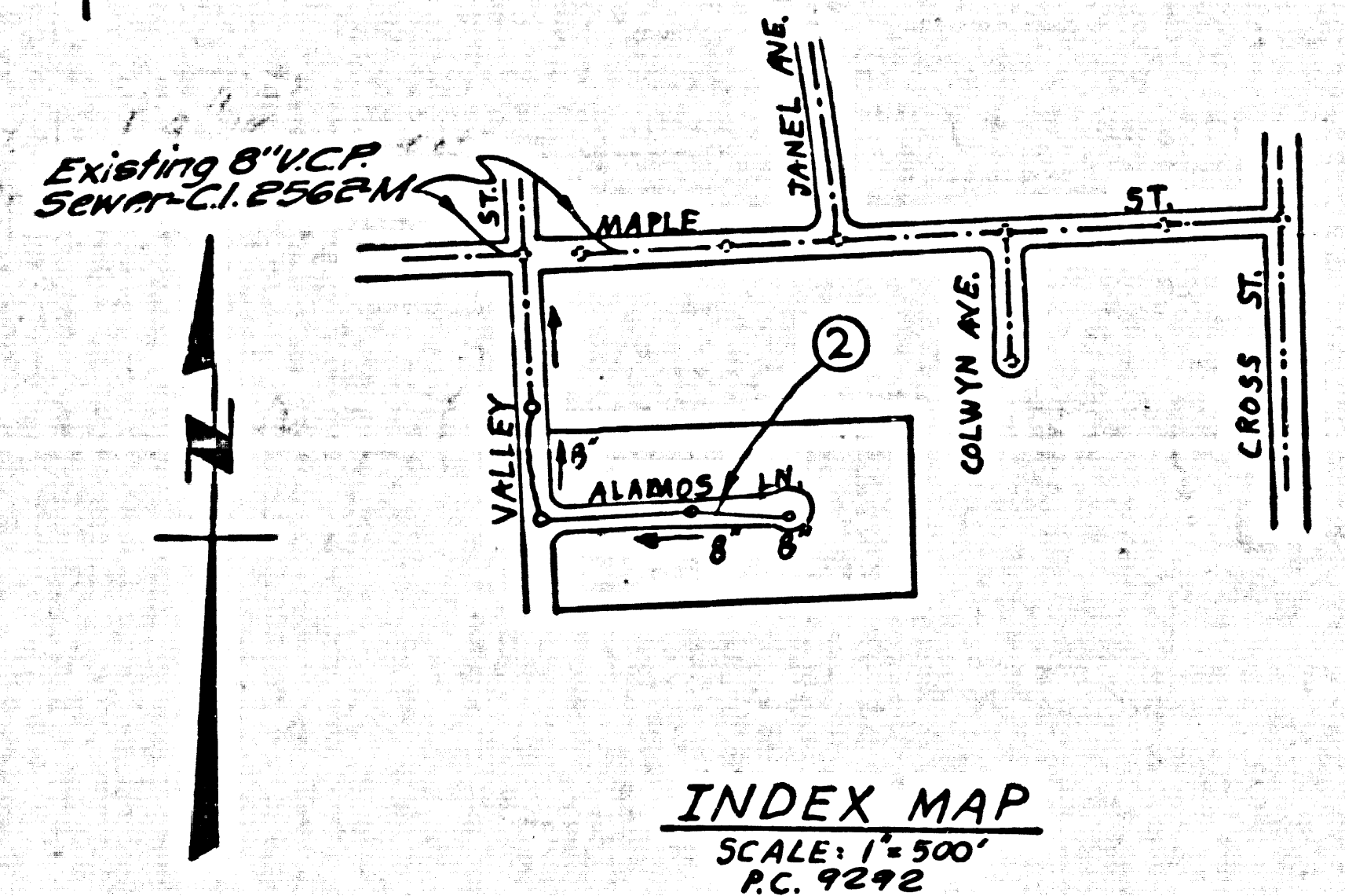


B.M. BL 813 ELEV. 1338.785
 L+T CONC WALK TO HSE 23410 MAPLE ST.
 105 FT S C/L + 60 FT W C/L VALLEY ST.
 NEWHALL QUAD. 19 72

- THE FOLLOWING LATEST REVISED STANDARD PLANS ON FILE IN THE OFFICE OF THE COUNTY ENGINEER SHALL APPLY IN THE CONSTRUCTION OF THIS PROJECT:
- LEGEND - 5-1
 - MINIMUM PUBLIC SAFETY REQUIREMENTS - 5-2
 - BRICK MANHOLE - 5-3
 - NON-REINFORCED PRE-CAST CONC. MANHOLE - 5-3B
 - LOCKING MANHOLE FRAME & COVER - 5-33
 - STANDARD MANHOLE STE - 5-7
 - BEDDING FOR SEWER PIPE - 5-21
 - CRADLING AND ENGAGEMENT - 5-26
 - WYE AND OR TEE SUPPORT - 5-23
 - WYE SADDLE FOR HOUSE LATERAL - 5-23
 - ALLOWABLE TRENCH WIDTHS - 5-23
 - SPECIAL HOUSE LATERALS - 5-25



INDEX MAP
 SCALE: 1" = 50'
 P.C. 9292
 TRACT NO. 31068

NUMBERS IN CIRCLES INDICATE PAGE NUMBERS

REVISION:
 1.-PAGE 2, REVISED PLAN AND PROFILE ON ALAMOS LANE, REVISED LOCATION OF PROPOSED STORM DRAIN, ADDED NOTE TO CONTRACTOR AND REVISED PROFILE B-B.

REVISION:
 2.-PAGE 2, REVISED HORIZONTAL ALIGNMENT FROM STA. 4+00 TO STA. 6+05.33 TO AVOID CONFLICT WITH TREES.

APPROVED: *[Signature]* DATE 7/11/72
 R.C.E. NO. 116742
 OFFICE OF COUNTY ENGINEER

APPROVED: *[Signature]* DATE 7/11/72
 R.C.E. NO. 116742
 OFFICE OF COUNTY ENGINEER

NO CONNECTION FOR THE DISPOSAL OF INDUSTRIAL WASTES SHALL BE MADE TO SEWERS SHOWN ON THESE DRAWINGS UNTIL A PERMIT FOR INDUSTRIAL WASTE WATER DISCHARGE HAS BEEN ISSUED BY THE SANITATION DISTRICTS FOR SAID CONNECTION

BEFORE BREAKING INTO OR CONSTRUCTION ON A COUNTY SANITATION DISTRICT SEWER AND PRIOR TO FINAL ACCEPTANCE OF THE PROJECT SANITATION DISTRICT INSPECTOR SHALL BE NOTIFIED BY PHONE 962-8600, SO THAT REQUIRED INSPECTION CAN BE MADE.

SANTA CLARITA VALLEY BLDG. DIST. NO. 82

TRACT NO. 31068

PRIVATE CONTRACT NO. 9292

INDEX 24G 5121
 W.S. G2
 1 SHEETS, 2 PAGES

SCALE: VERT. 1" = 4' HORIZ. 1" = 40' SEPTEMBER, 1970 45,949

PREPARED IN THE OFFICES OF
 V.T.N. LOS ANGELES
 5819 VAN NUYS BLVD., VAN NUYS, CALIF.

BY: *[Signature]* 8-2-72
 REG. C.E. NO. 16,685

FOR LEGEND SEE PLAN NO. S-1

- NOTES:
1. PROVIDE STAKES ON THE PROPERTY LINE OR PROPERTY LINES PRODUCED AT RIGHT ANGLES TO THE SEWER LINE AT THE CENTER LINE OF EACH MANHOLE.
 2. NO REPRESENTATIVE OF THE COUNTY ENGINEER WILL SURVEY OR LAY OUT ANY PORTION OF THE WORK.
 3. THE PRIVATE ENGINEER SHALL FURNISH THE COUNTY ENGINEER WITH GRADE SHEETS AND STATIONING FOR ALL HOUSE LATERALS AND "T" BRANCHES AND SHALL PROVIDE STAKES FOR THEM AT THEIR PROPER LOCATIONS WITH STATIONING PLAINLY MARKED. ALL HOUSE LATERALS SHALL BE CONSTRUCTED IN A STRAIGHT ALIGNMENT AT RIGHT ANGLES FROM THE MAIN LINE SEWER EXCEPT AS SHOWN ON THE PLANS. HOUSE LATERALS FROM CHIMNEYS SHALL NOT HAVE AN ANGLE OF LESS THAN 45° WITH THE MAIN LINE SEWER. ANY CHANGE IN ALIGNMENT SHALL BE REQUESTED IN WRITING BY THE PRIVATE ENGINEER.
 4. THE PRIVATE ENGINEER SHALL FURNISH THE HOUSE LATERAL DEPTH AT THE PROPERTY LINE BELOW THE TOP OF CURB ELEVATION FOR EACH HOUSE LATERAL ON THE GRADE SHEET.
 5. NO REVISIONS SHALL BE MADE IN THESE PLANS WITHOUT THE APPROVAL OF THE COUNTY ENGINEER.
 6. THE CONTRACTOR SHALL NOTIFY THE DESIGN DIVISION BY TELEPHONE, 973-770 - 7283, AT LEAST TWENTY-FOUR HOURS BEFORE STARTING ANY WORK UNDER THIS CONTRACT.
 7. MANHOLES SHALL BE BRICK SEWER STRUCTURES PER S-3, OR PRE-CAST CONCRETE MANHOLES PER S-3B, EXCEPT AS NOTED.
 8. ALL JOINTS BETWEEN CAST IRON PIPE AND VITRIFIED CLAY PIPE SHALL BE MADE WITH A RUBBER GREESE JOINT TYPE OR S WITH GUMMING IF NECESSARY. PIPE STAND-OFF SHALL BE MAINTAINED THROUGHOUT THE ENTIRE LENGTH OF THE JOINT.
 9. MANHOLE TOPS IN UNIMPROVED RIGHTS-OF-WAY TO BE FINISH GRADE.
 10. USE EXTRA STRENGTH PIPE. ALL PIPE IS STANDARD DEPTH EXCEPT AS NOTED.
 11. VITRIFIED CLAY PIPE JOINTS SHALL BE TYPE "D", "F" OR "G" PER STANDARD SPECIFICATIONS, SECTION 23-2.
 12. IF A POWER POLE IS WITHIN THREE FEET OF THE SEWER, THE SEWER SHALL BE ENCASED, PER S-23, CASE II, TWO FEET ON EACH SIDE FROM THE POINT OF INTERFERENCE.
 13. IF DURING THE COURSE OF CONSTRUCTION IT IS DETERMINED THAT THERE IS LESS THAN FOUR FEET OF COVER OVER THE TOP OF A MAIN LINE OR HOUSE LATERAL V.C.P. SEWER WHICH IS NOT INDICATED ON THE PLANS, THE PIPE SHALL BE ENCASED PER S-23, CASE II UNLESS OTHERWISE APPROVED BY THE COUNTY ENGINEER.
 14. HOUSE LATERALS TO BE CONSTRUCTED WITH INVERTS AT PROPERTY LINE 4 FEET BELOW CURB GRADE EXCEPT AS NOTED.
 15. RESURFACE ALL TRENCHES WITHIN PAVED AREAS TO MEET L.A. COUNTY ROAD DEPT. OR CALIFORNIA STATE HIGHWAY REQUIREMENTS IN ACCORDANCE WITH PERMITS.
 16. SEWERS TO BE TESTED FOR LEAKAGE PER SEC. 206-1.4 OF STANDARD SPECIFICATIONS.
 17. TIE OR WYE BRANCHES MAY BE USED FOR CONNECTION TO MAINLINE SEWER EXCEPT AS NOTED.
 18. REFER TO SECTION 7-10.4.1 OF THE STANDARD SPECIFICATIONS REGARDING SAFETY PRECAUTIONS.
 19. PRIOR TO THE ISSUANCE OF THE REQUIRED SEWER CONSTRUCTION PERMIT BY THE COUNTY ENGINEER, THE CONTRACTOR SHALL OBTAIN A PERMIT TO EXCAVATE FROM THE STATE OF CALIFORNIA, DIVISION OF INDUSTRIAL SAFETY.
 20. FULL COMPLIANCE WITH SECTION 206-1.5.5 OF THE SPECIAL PROVISIONS WILL BE REQUIRED FOR BACKFILL IN STREET'S CERTIFICATION OF BACKFILL COMPLETION AND SAND EQUIVALENT BY A QUALIFIED REGISTERED TESTING LABORATORY SHALL BE PROVIDED BY THE PERMITTEE PRIOR TO THE ISSUANCE OF A CERTIFICATE OF PARTIAL ACCEPTANCE.

NOTE:
 GRADES TO WHICH THIS IMPROVEMENT IS TO BE CONSTRUCTED ARE SHOWN ON PLANS AND PROFILES. GRADE POINTS FOR TOP OF CURBS, CENTER LINE OF STREETS, OR CENTER LINE OF ALLEYS ARE SHOWN BY CIRCLES ON PROFILES. AT ALL POINTS BETWEEN DESIGNATED POINTS THE GRADE SHALL BE ESTABLISHED SO AS TO CONFORM TO A STRAIGHT LINE DRAWN BETWEEN SAID DESIGNATED POINTS. ELEVATIONS ARE IN FEET ABOVE U.S.C. & G.S. SEA LEVEL DATUM OF 1929. THE DRAWING AND THE DATA HEREON ARE HEREBY MADE A PART OF THE SPECIFICATIONS. WORK SHALL BE CONSTRUCTED ACCORDING TO STANDARD SPECIFICATIONS FOR PUBLIC WORKS CONSTRUCTION, 1974 EDITION, AS AMENDED BY THE COUNTY ENGINEER'S OFFICE. THE CONTRACTOR SHALL BE RESPONSIBLE FOR OBTAINING ALL NECESSARY PERMITS TO EXCAVATE IN COUNTY STREETS, FROM THE L.A. COUNTY ROAD DEPT. DIST. NO. 8 AND PAY A FEE TO THE COUNTY ENGINEER'S OFFICE. THE CONTRACTOR SHALL BE RESPONSIBLE FOR OBTAINING ALL NECESSARY PERMITS TO EXCAVATE IN ALLEYS OR PRIVATE STREETS FROM THE ALLEYS OR PRIVATE STREET OWNERS. THE CONTRACTOR SHALL BE RESPONSIBLE FOR OBTAINING ALL NECESSARY PERMITS TO EXCAVATE IN THE LOCATION OF OR THE EXISTENCE OR NON-EXISTENCE OF ANY UNDERGROUND UTILITY PIPE, OR STRUCTURE WITHIN THE LIMITS OF THE PROJECT. THIS NOTE APPLIES TO ALL PAGES. IF WORK IS TO BE DONE IN A STATE HIGHWAY, A PERMIT MUST BE OBTAINED FROM THE STATE OF CALIFORNIA, DIVISION OF HIGHWAYS, 126 SOUTH SPRING STREET, LOS ANGELES, CALIFORNIA.

COUNTY OF LOS ANGELES, CALIFORNIA
 DEPARTMENT OF COUNTY ENGINEER
 J. D. PARKHURST, CHIEF ENGINEER
 CO. SAN. DIST. NO. 32

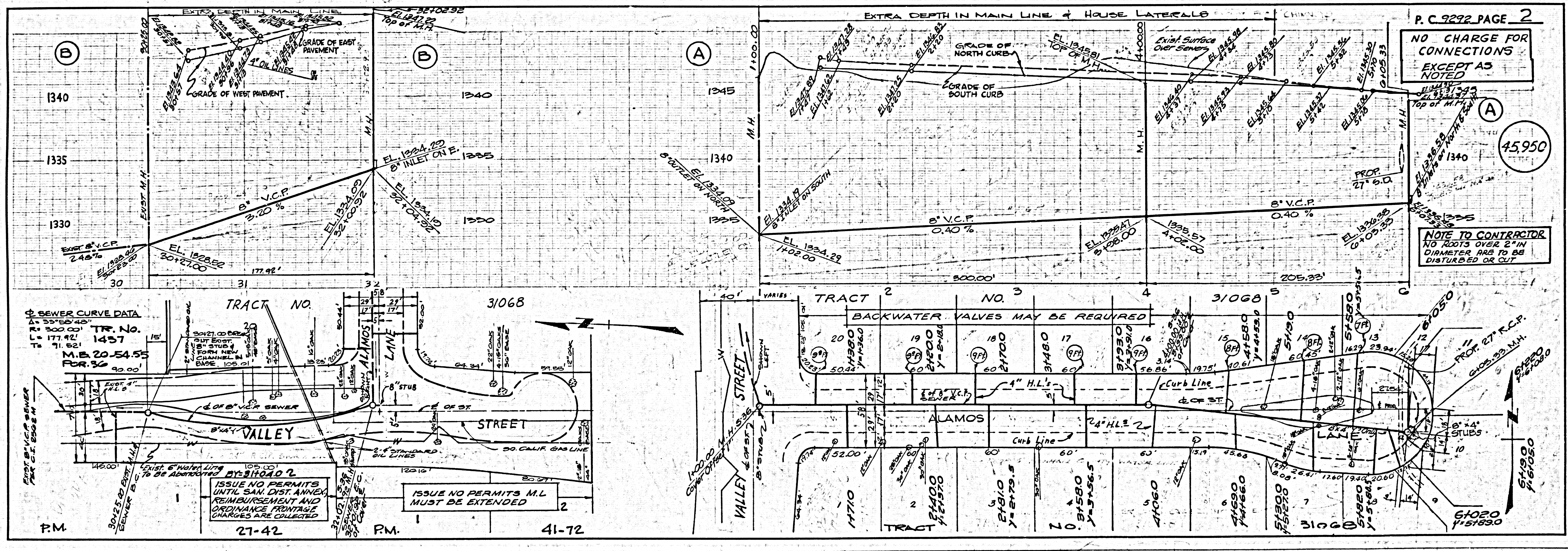
APPROVED BY: *[Signature]*
 REGIONAL ENGINEER

CHECKED BY: *[Signature]* 11/24/72
 REG. C.E. NO. 14330

NOTICE TO CONTRACTOR
 The existence and location of any underground utility pipes or structures shown on these plans are obtained by a search of the available records. To the best of my knowledge there are no existing utilities except as shown on these plans. The contractor is required to take due precautionary measures to protect the utility lines shown and any other lines not of record or not shown on these plans.
[Signature] 10-12-72
 R.C.E.

COLLECT CHARGES AS INDICATED

J.N. 0250.02



P.C. 9292 PAGE 2
 NO CHARGE FOR CONNECTIONS EXCEPT AS NOTED

NOTE TO CONTRACTOR
 NO ROOTS OVER 2" IN DIAMETER ARE TO BE DISTURBED OR CUT

SEWER CURVE DATA
 Δ = 55° 50' 40"
 R = 300.00' TR. NO. 1457
 L = 177.92'
 T = 71.52'
 M.B. 20-54.55 FOR 30

ISSUE NO PERMITS UNTIL SAN. DIST. ANNOY REIMBURSEMENT AND ORDINANCE PRORATE CHARGES ARE COLLECTED

ISSUE NO PERMITS M.L. MUST BE EXTENDED