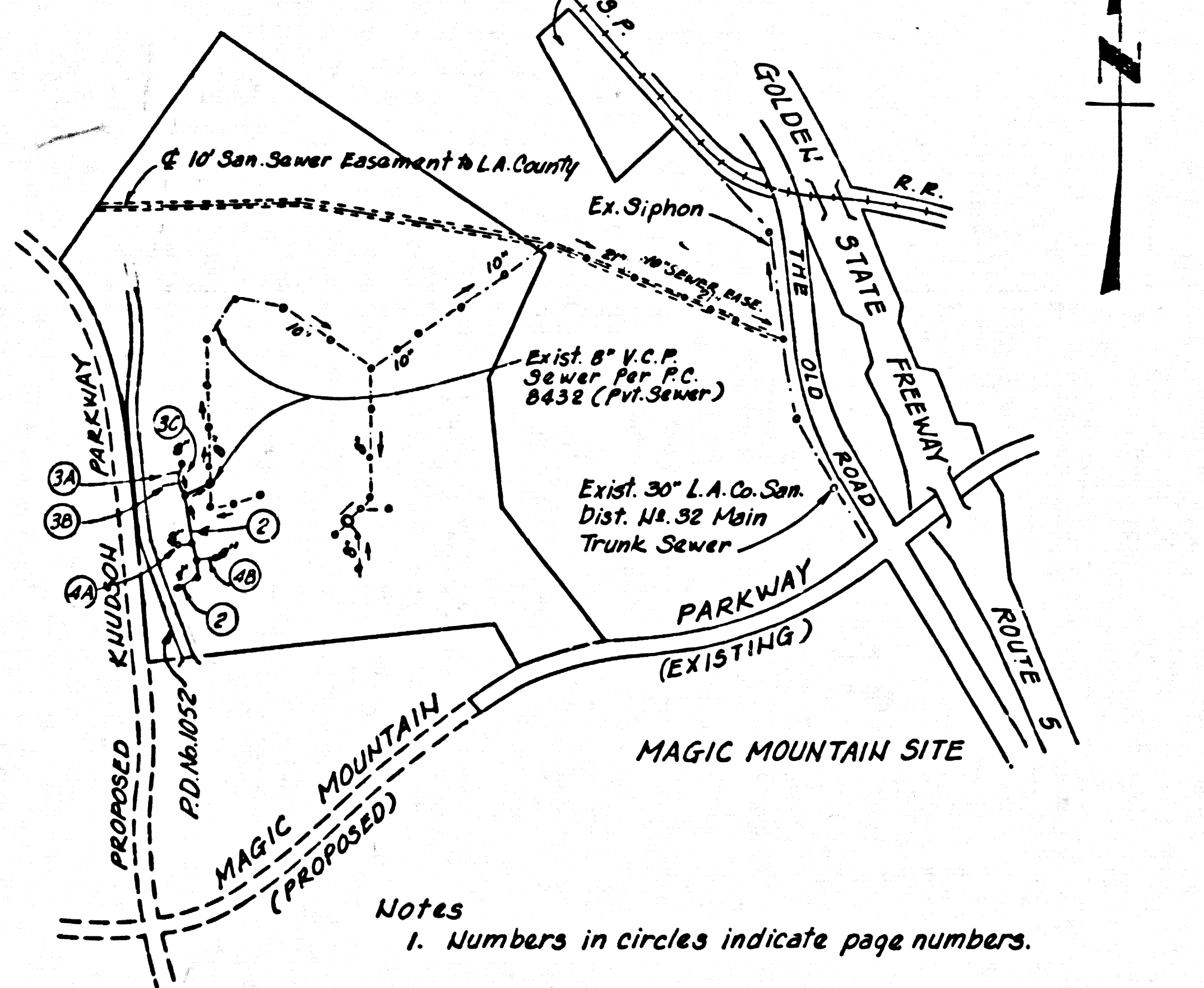


B.M. B.L.#1774 ELEV. 1078.072'  
 Road B.M. tag - So. curb of traffic  
 island 15' N. of E. so. roadway of Henry  
 Mayo Dr. & 70' W. of Golden State  
 Freeway bridge (S-1-625)  
 NEWHALL QUAD. 19 65

Sewage Treatment Plant Site  
 Los Angeles County  
 Sanitation District No. 32



Notes  
 1. Numbers in circles indicate page numbers.

INDEX MAP  
 Scale: 1" = 1000'

P.C. 9311  
 (PRIVATE SEWER)

DOUBLE SCALE

Construction Notes Continued

15. Contractor Shall Replace In Kind, All Conduit, Lights, Wells Starts, Stormwalk, Irrigation Lines, Valves, Fences, Electrical Appliances, Except Landscaping That Are Removed or Damaged. Magic Mountain Personnel Will Remove and Replace All Landscaping Such As Bushes, Trees, and Shrubs; The Contractor Shall Coordinate Such Activities With Magic Mountain.
16. Contractor Shall Take Every Precaution Necessary To Prevent Dirt Or Foreign Material From Falling Into The Lake.
17. Contractor Shall Coordinate Work Within The Railroad Area With Magic Mountain To Insure That The Railroad Is In Safe Condition. No Work Shall Be Done In The Area.
18. Contractor Shall Coordinate Work With Other Contractors Working In The Area.
19. Special Backfill  
 a. Backfill Trench And Replace Other Earth So As To Achieve The Absence Of Pockets And Slopes Shown On The Grading Plan Approved For This Development By The Building And Safety Division.  
 b. All Backfill And Earth Replaced Shall Be Compacted To A Minimum Of 90% Of Maximum Density Per A.S.T.M. Standard Method Of Test D-698-57T As Modified. Acceptable Certification Of Such Compaction Shall Be Submitted To The Design Division.  
 Backfill May Be Jetted Or Mechanically Compacted In Accordance With Section 306-1.3 Of The Standard Specifications.
20. The Contractor Shall Assume Sole And Complete Responsibility For Job Site Conditions During The Course Of Construction Of This Project, Including Safety Of All Persons And Property, And This Requirement Shall Apply Continuously And Not Be Limited To Normal Working Hours.
21. Valcon, Inc. Has Not Been Retained Or Compensated, And Assumes No Responsibility To Provide Design And Construction Review Services Relating To The Contractor's Safety Precautions Or To Advise, Rehearse, Sequence Or Proceedures Required For The Contractor To Perform His Work.
22. The Location Of And Existence Of Or Non-Existence Of Underground Utilities Has Been Determined To The Best Of The Engineer's Ability, But It Shall Be The Sole Responsibility Of The Contractor To Determine The Location Of Any Existing Utilities, And To Take All Necessary Precautions To Avoid Damage To These Utilities. The Contractor Shall Assume Sole Responsibility For Any Damage Done To Existing Utilities During Construction.

BEFORE BREAKING INTO OR CONSTRUCTION ON A COUNTY SANITATION DISTRICT SEWER AND PRIOR TO FINAL ACCEPTANCE OF THE PROJECT SANITATION DISTRICT INSPECTOR, SHALL BE NOTIFIED BY PHONE 362-8605, SO THAT REQUIRED INSPECTION CAN BE MADE.

NO CONNECTION FOR THE DISPOSAL OF INDUSTRIAL WASTES SHALL BE MADE TO SEWERS SHOWN ON THESE DRAWINGS UNLESS A PERMIT FOR INDUSTRIAL WASTE WATER DISCHARGE HAS BEEN ISSUED BY THE SANITATION DISTRICTS FOR SAID CONNECTION.

GENERAL NOTES:

1. ELEVATIONS ARE IN FEET ABOVE U.S.C. & G.S. SEA LEVEL DATUM OF 1929.
2. NO REVISIONS SHALL BE MADE IN THESE PLANS WITHOUT THE APPROVAL OF THE COUNTY ENGINEER.
3. NO REPRESENTATIVE OF THE COUNTY ENGINEER WILL SURVEY OR LAY OUT ANY PORTION OF THE WORK.
4. GRADES TO WHICH THIS IMPROVEMENT IS TO BE CONSTRUCTED ARE SHOWN ON PLANS AND PROFILES. GRADE POINTS FOR TOP OF CURBS, CENTER LINE OF STREETS, OR CENTER LINE OF ALLEYS ARE SHOWN BY CIRCLES ON PROFILES. AT ALL POINTS BETWEEN DESIGNATED POINTS THE GRADE SHALL BE ESTABLISHED SO AS TO CONFORM TO A STRAIGHT LINE DRAWN BETWEEN SAID DESIGNATED POINTS.
5. THE PRIVATE ENGINEER SHALL FURNISH THE COUNTY ENGINEER WITH GRADE SHEETS AND STATIONING FOR ALL HOUSE LATERALS AND "T" OR "T" BRANCHES AND SHALL PROVIDE STAKES FOR THEM AT THEIR PROPER LOCATIONS WITH STATIONING PLAINLY MARKED. ALL HOUSE LATERALS SHALL BE CONSTRUCTED IN A STRAIGHT ALIGNMENT AT RIGHT ANGLES FROM THE MAIN LINE SEWER EXCEPT AS SHOWN ON THE PLANS. HOUSE LATERALS FROM CHIMNEYS SHALL NOT HAVE AN ANGLE OF LESS THAN 45° WITH THE MAIN LINE SEWER. ANY CHANGE IN ALIGNMENT SHALL BE REQUESTED IN WRITING BY THE PRIVATE ENGINEER.
6. THE PRIVATE ENGINEER SHALL FURNISH THE HOUSE LATERAL DEPTH AT THE PROPERTY LINE BELOW THE TOP OF CURB ELEVATION FOR EACH HOUSE LATERAL ON THE GRADE SHEET.
7. BEFORE WORK CAN BE STARTED, THE CONTRACTOR MUST OBTAIN A PERMIT TO EXCAVATE FROM THE COUNTY ENGINEER, P.M. 1015, 108 W. 4th ST., L.A. OR SANTA CLARITA VALLEY REGIONAL OFFICE, TO COVER THE COST OF CONSTRUCTION INSPECTION AND RECORD PLANS.
8. IF WORK IS TO BE DONE IN A STATE HIGHWAY, A PERMIT MUST BE OBTAINED FROM THE STATE OF CALIFORNIA, DIVISION OF HIGHWAYS, 739 SOUTH SPRING STREET, LOS ANGELES, CALIFORNIA.
9. APPROVAL OF THIS PLAN BY THE COUNTY OF LOS ANGELES DOES NOT CONSTITUTE A REPRESENTATION AS TO THE ACCURACY OF THE LOCATION OF OR THE EXISTENCE OR NON-EXISTENCE OF ANY UNDERGROUND UTILITY PIPE, OR STRUCTURE WITHIN THE LIMITS OF THIS PROJECT. THIS NOTE APPLIES TO ALL PAGES.
10. REFER TO SECTION 7.18.1 OF THE STANDARD SPECIFICATIONS, REGARDING SAFETY ORDERS.
11. PRIOR TO THE ISSUANCE OF THE REQUIRED SEWER CONNECTION PERMIT BY THE COUNTY ENGINEER, THE CONTRACTOR SHALL OBTAIN A PERMIT TO EXCAVATE FROM THE STATE OF CALIFORNIA, DIVISION OF INDUSTRIAL SAFETY.

CONSTRUCTION NOTES:

1. WORK SHALL BE CONSTRUCTED ACCORDING TO THE STANDARD SPECIFICATIONS FOR PUBLIC WORKS CONSTRUCTION (1976 EDITION) WITH THE MODIFICATIONS AND COUNTY ENGINEER SPECIAL PROVISIONS FOR THE CONSTRUCTION OF SANITARY SEWERS DATED MARCH 1, 1974 AS AMENDED AND SHALL BE PROSECUTED ONLY IN THE PRESENCE OF THE COUNTY ENGINEER.
2. THE CONTRACTOR SHALL NOTIFY THE DESIGN DIVISION BY TELEPHONE, 213 974-7283, AT LEAST TWENTY-FOUR HOURS BEFORE STARTING ANY WORK UNDER THIS CONTRACT.
3. HOUSE LATERALS TO BE CONSTRUCTED WITH MINIMUM 4" FREE SPACE ABOVE CURB GRADE EXCEPT AS NOTED.
4. WYE OR TE BRANCHES MAY BE USED FOR CONNECTIONS TO MAINLINE SEWERS EXCEPT AS NOTED.
5. ALL STRUCTURES SHALL BE EITHER BRICK MANHOLES PER E-36, OR PRECAST CONCRETE MANHOLES PER E-36, EXCEPT AS NOTED.
6. PROVIDE STAKES ON THE PROPERTY LINE OR PROPERTIES LINES PRODUCED AT RIGHT ANGLES TO THE SEWER LINE AT THE CENTER LINE OF EACH MANHOLE.
7. MANHOLE TOPS IN UNIMPROVED RIGHTS-OF-WAY TO BE LEVEL WITH FINISHED GRADE.
8. VITRIFIED CLAY PIPE JOINTS SHALL BE TYPE "B", "P", OR "D" PER STANDARD SPECIFICATIONS SECTION 306-2.
9. IF A POWER POLE IS WITHIN THREE FEET OF THE SEWER, THE SEWER SHALL BE ENCASED, PER E-23, CASE II, TWO FEET ON EACH SIDE FROM THE POINT OF INTERFERENCE.
10. IF DURING THE COURSE OF CONSTRUCTION IT IS DETERMINED THAT THERE IS LESS THAN FOUR FEET "P" COVER OVER THE TOP OF A MAIN LINE OR HOUSE LATERAL V.C.P. SEWER WHICH IS NOT INDICATED ON THE PLANS, THE PIPE SHALL BE ENCASED PER E-23, CASE II UNLESS OTHERWISE APPROVED BY THE COUNTY ENGINEER.
11. ALL JOINTS BETWEEN CAST IRON PIPE AND VITRIFIED CLAY PIPE SHALL BE MADE WITH A RUBBER JOINT TYPE "C" OR "D", FIFTH RUSHING IF NECESSARY PER STANDARD SPECIFICATIONS, SECTION 306-2.
12. SEWERS TO BE TESTED FOR LEAKAGE PER SECTION 306-3.2 OF THE STANDARD SPECIFICATIONS AND SPECIAL PROVISIONS.
13. RESURFACE ALL TRENCHES WITHIN PAVED AREAS TO MEET L.A. COUNTY ROAD DEPT. OR CALIFORNIA STATE HIGHWAY REQUIREMENTS IN ACCORDANCE WITH PERMITS.
14. FULL COMPLIANCE WITH SECTION 306-1.3.3 OF THE SPECIAL PROVISIONS WILL BE REQUIRED FOR BACKFILL IN STREETS. CERTIFICATION OF BACKFILL COMPACTION AND SAND EQUIVALENTS BY A QUALIFIED, REGISTERED TESTING LABORATORY SHALL BE PROVIDED BY THE PERMITTEE PRIOR TO THE ISSUANCE OF A CERTIFICATE OF ADEQUACY.

CONSTRUCTED IN  
**PRIVATE PROPERTY**  
 FOR MAGIC MOUNTAIN VILLAGE GREEN  
 (PRIVATE SEWER)  
**PRIVATE CONTRACT NO. 9311**  
 INDEX 264 5109  
 W.S. 63  
 2 SHEETS, 4 PAGES

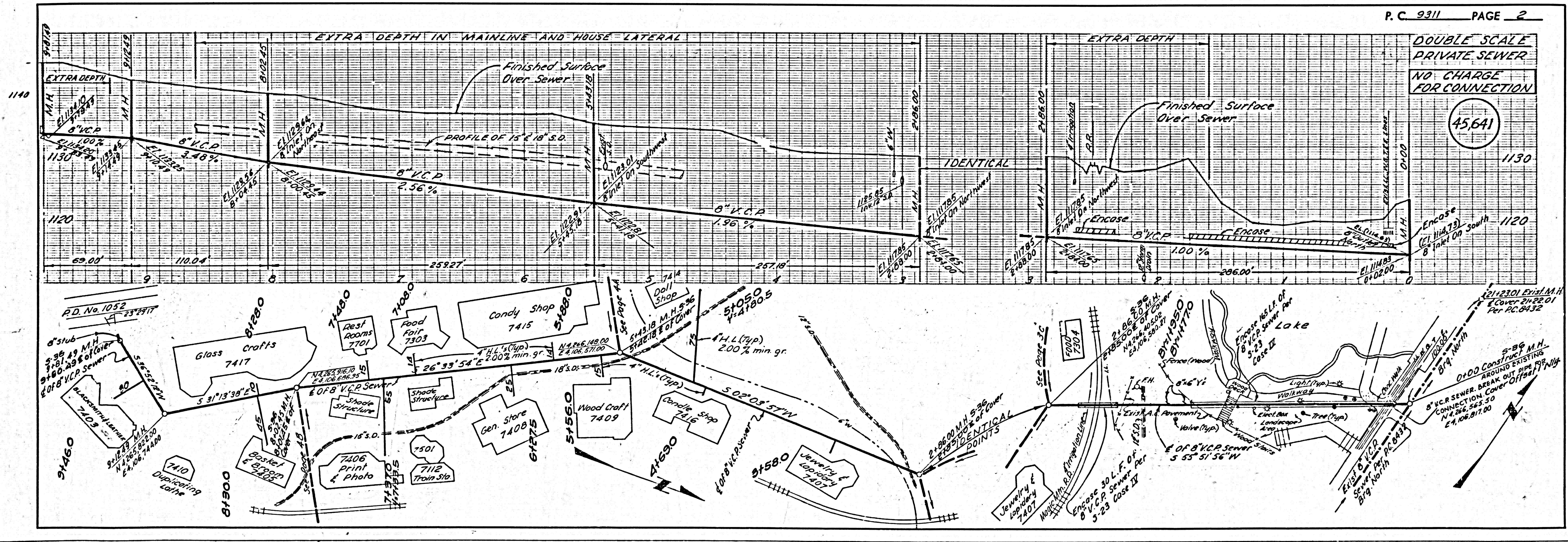
SCALE: VERT. 1" = 8'  
 HORIZ. 1" = 40'  
 September, 1976  
 PREPARED IN THE OFFICES OF  
**VALCON, INC.**  
 1429 THOUSAND OAKS BLVD.  
 THOUSAND OAKS, CALIF. 91320  
 BY: *[Signature]*  
 REG. C. E. No. 13696

45,640

THE FOLLOWING LATEST REVISED STANDARD PLANS ON FILE IN THE OFFICE OF THE COUNTY ENGINEER SHALL APPLY IN THE CONSTRUCTION OF THIS PROJECT:

LEGEND	
MINIMUM PUBLIC SAFETY REQUIREMENTS	E-31
BRICK MANHOLE	E-32
STANDARD MANHOLE STEP	E-37
BEDDING FOR SEWER PIPE	E-38
ENCASING AND BRICKWORK	E-39
WYE OR TE SUPPORT	E-36
ALLOWABLE TRENCH WIDTHS	E-33
LOCKING MANHOLE FRAME AND COVER	E-35
NON-REINFORCED PRECAST CONCRETE MANHOLE	E-36

COUNTY OF LOS ANGELES, CALIFORNIA  
 DEPARTMENT OF COUNTY ENGINEER JOHN D. PARKHURST, CHIEF ENGINEER  
 CO. DIV. NO. 32  
 APPROVED *[Signature]* 11/1/76 REGIONAL ENGINEER (DATE)  
 APPROVED *[Signature]* 11/1/76 OFFICE ENGINEER  
 CHECKED *[Signature]* 11/1/76 (DATE)  
 REG. C. E. NO. 14390  
 SANTA CLARITA VALLEY BLDG. DIST. 82 J.N. 0358.01

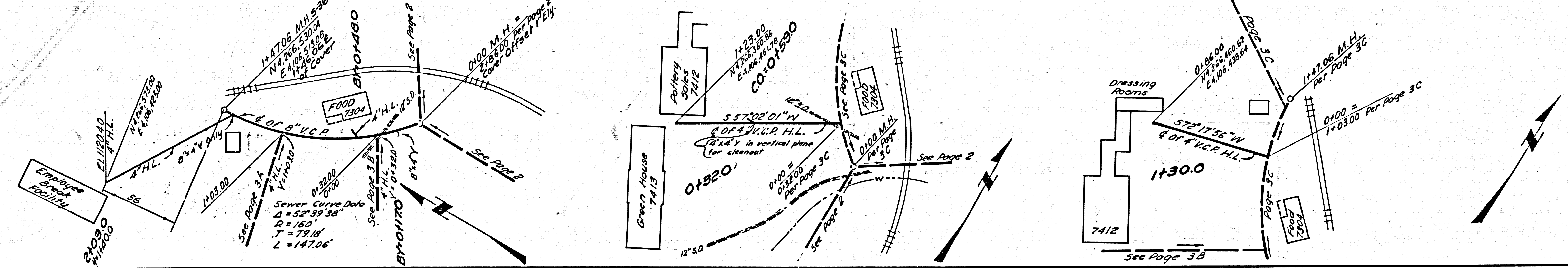
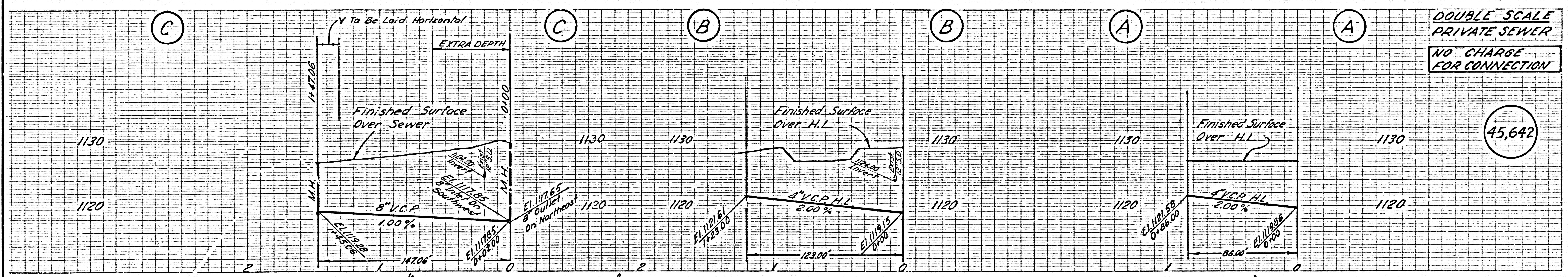


DOUBLE SCALE  
 PRIVATE SEWER  
 NO CHARGE  
 FOR CONNECTION  
 45,641

DOUBLE SCALE  
PRIVATE SEWER

NO CHARGE  
FOR CONNECTION

45,642



DOUBLE SCALE  
PRIVATE SEWER

NO CHARGE  
FOR CONNECTION

45,643

