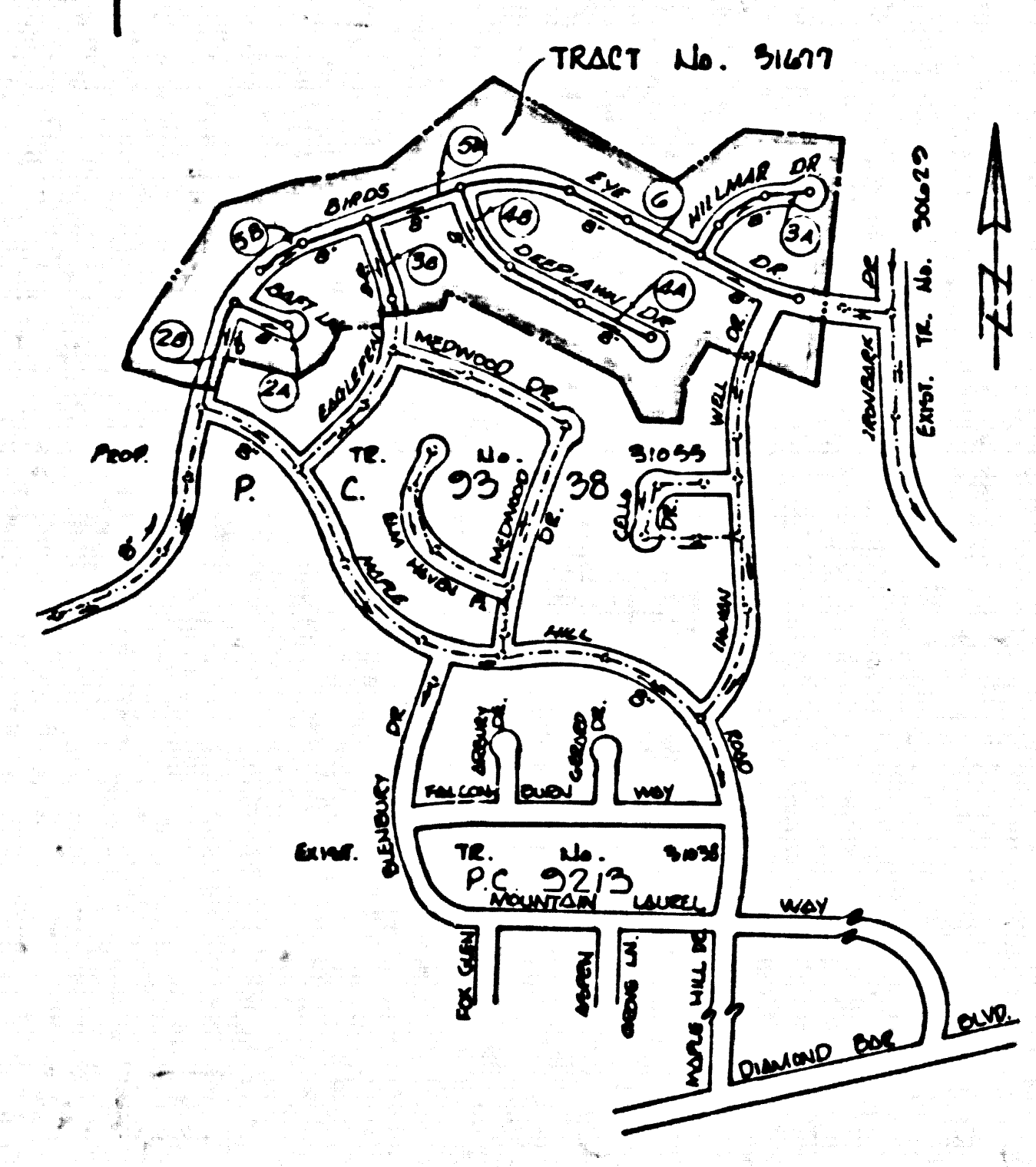


B.M. C.G. 3910 ELEV. 845.994
 R.D.B.M. TAG IN W SIDE CONC. BOX
 CULV. 2 FT. W & DIAMOND BAR
 BLVD + 722 FT. W. INT. MAPLE HILL RD.
 OTTERDEIN QUAD. 1975 ADJ.

PRIVATE ENGINEERS NOTICE TO CONTRACTORS: THE EXISTENCE AND APPROXIMATE LOCATION OF UNDERGROUND UTILITIES OR STRUCTURES SHOWN ON THESE PLANS WERE DETERMINED BY A SEARCH OF AVAILABLE PUBLIC RECORDS. TO THE BEST OF OUR KNOWLEDGE THERE ARE NO EXISTING UNDERGROUND UTILITIES OR STRUCTURES EXCEPT AS SHOWN ON THESE PLANS. THE CONTRACTOR IS REQUESTED TO TAKE OUR PRECAUTIONARY MEASURES TO PROTECT THE UTILITIES AND STRUCTURES SHOWN AND ANY OTHER UTILITIES AND STRUCTURES NOT OF RECORD OR NOT SHOWN ON THESE PLANS.

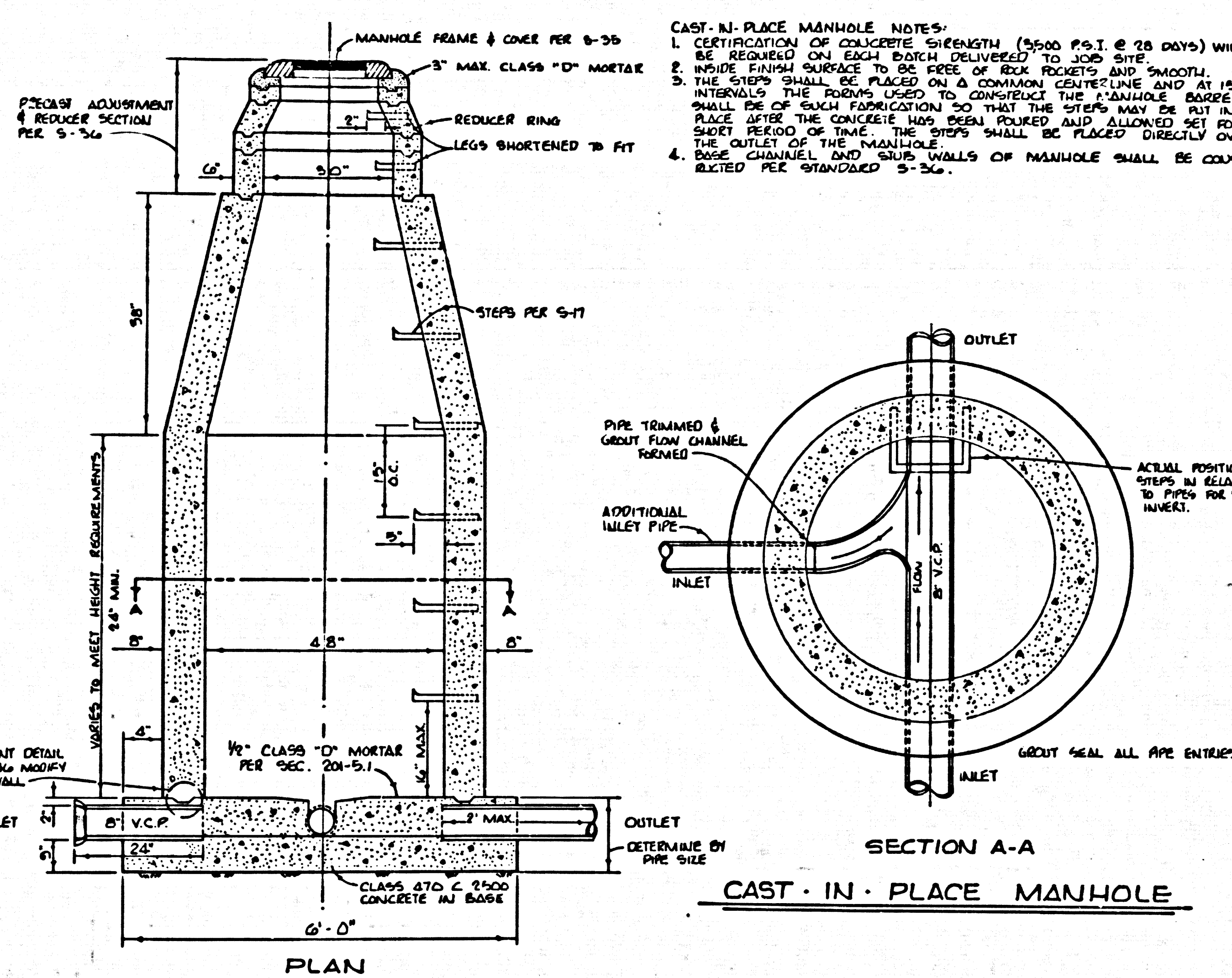
ISSUE NO HOUSE CONNECTION PERMITS UNTIL P.C. 9338 IS ACCEPTED

Robert R. Flores
 ROBERT R. FLORES R.C.E. No. 11549



INDEX MAP
 TRACT No. 31677
 P.C. No. 9339
 SCALE: 1" = 600'

NOTE: LOTS No. 1 AND 100 ARE SERVED BY TRACT No. 31055 - P.C. No. 9338



CAST-IN-PLACE MANHOLE NOTES:
 1. CERTIFICATION OF CONCRETE STRENGTH (2800 P.S.I. @ 28 DAYS) WILL BE REQUIRED ON EACH BATCH DELIVERED TO JOB SITE.
 2. INSIDE FINISH SURFACE TO BE FINE OF BRICK ROCKET AND SMOOTH.
 3. THE JOINTS SHALL BE PLACED ON A COMMON CENTERLINE AND AT 18-INCH INTERVALS. THE JOINTS USED TO CONSTRUCT THE MANHOLE BODIES SHALL BE OF SQA FABRICATION SO THAT THE JOINTS MAY BE PLACED AFTER THE CONCRETE HAS BEEN PLACED AND ALLOWED SET FOR A SHORT PERIOD OF TIME. THE JOINTS SHALL BE PLACED DIRECTLY OVER THE OUTLET OF THE MANHOLE. JOINTS SHALL BE PLACED DIRECTLY OVER THE JOINTS OF THE MAINLINE SEWER PIPE.
 4. BASE CHANNELS AND CURB WALLS OF MANHOLE SHALL BE CONCRETE PER STANDARD S-304.

DOUBLE SCALE

- GENERAL NOTES:
- ELEVATIONS ARE IN FEET ABOVE U.S.C. & G.S. SEA LEVEL DATUM OF 1929.
 - NO REVISIONS SHALL BE MADE IN THESE PLANS WITHOUT THE APPROVAL OF THE COUNTY ENGINEER.
 - NO REPRESENTATIVE OF THE COUNTY ENGINEER WILL SURVEY OR LAY OUT ANY PORTION OF THE WORK.
 - GRADES TO WHICH THIS IMPROVEMENT IS TO BE CONSTRUCTED ARE SHOWN ON PLANS AND PROFILES. GRADE POINTS FOR TOP OF CURBS, CENTER LINE OF STREETS, OR CENTER LINE OF ALLEYS ARE SHOWN BY CIRCLES ON PROFILES. AT ALL POINTS BETWEEN DESIGNATED POINTS THE GRADE SHALL BE ESTABLISHED SO AS TO CONFORM TO A STRAIGHT LINE DRAWN BETWEEN SAID DESIGNATED POINTS.
 - THE PRIVATE ENGINEER SHALL FURNISH THE COUNTY ENGINEER WITH GRADE SHEETS AND STATIONING FOR ALL HOUSE LATERALS AND "T" OR "T" BRANCHES AND SHALL PROVIDE STAKES FOR THEM AT THEIR PROPER LOCATIONS WITH STATIONING PLAINLY MARKED. ALL HOUSE LATERALS SHALL BE CONSTRUCTED IN A STRAIGHT ALIGNMENT AT RIGHT ANGLES FROM THE MAIN LINE SEWER EXCEPT AS SHOWN ON THE PLANS. HOUSE LATERALS FROM CHIMNEYS SHALL NOT HAVE AN ANGLE OF LESS THAN 45° WITH THE MAIN LINE SEWER. ANY CHANGE IN ALIGNMENT SHALL BE REQUESTED IN WRITING BY THE PRIVATE ENGINEER.
 - THE PRIVATE ENGINEER SHALL FURNISH THE HOUSE LATERAL DEPTH AT THE PROPERTY LINE BELOW THE TOP OF CURB ELEVATION FOR EACH HOUSE LATERAL ON THE GRADE SHEET.
 - BEFORE WORK CAN BE STARTED, THE CONTRACTOR MUST OBTAIN A PERMIT TO EXCAVATE ON COUNTY STREETS FROM THE L.A. COUNTY ROAD DEPT., DISTRICT OFFICE NO. 1, AND PAY A FEE TO THE COUNTY ENGINEER, 201 S. DIMITIA BLVD., SAN DIMAS REGIONAL OFFICE TO COVER THE COST OF CONSTRUCTION INSPECTION AND RECORD PLANS.
 - IF WORK IS TO BE DONE IN A STATE HIGHWAY, A PERMIT MUST BE OBTAINED FROM THE STATE OF CALIFORNIA, DIVISION OF HIGHWAYS, 130 SOUTH SPRING STREET, LOS ANGELES, CALIFORNIA.
 - APPROVAL OF THIS PLAN BY THE COUNTY OF LOS ANGELES DOES NOT CONSTITUTE A REPRESENTATION AS TO THE ACCURACY OF THE LOCATION OF OR THE EXISTENCE OR NON-EXISTENCE OF ANY UNDERGROUND UTILITY PIPE, OR STRUCTURE WITHIN THE LIMITS OF THE PROJECT. THIS NOTE APPLIES TO ALL PAGES.
 - REFER TO SECTION 7-10.4.1 OF THE STANDARD SPECIFICATIONS, REGARDING SAFETY ORDERS.
 - PRICE TO THE INSURANCE OF THE REQUIRED WORKS CONSTRUCTION FUND BY THE COUNTY ENGINEER, THE CONTRACTOR SHALL OBTAIN A PERMIT TO EXCAVATE FROM THE STATE OF CALIFORNIA DIVISION OF INDUSTRIAL SAFETY.

CONSTRUCTION NOTES:

- WORK SHALL BE CONSTRUCTED ACCORDING TO THE STANDARD SPECIFICATIONS FOR PUBLIC WORKS CONSTRUCTION (1976 EDITION) AND COUNTY ENGINEER SPECIAL PROVISIONS FOR THE CONSTRUCTION OF SANITARY SEWERS DATED SEPTEMBER 21, 1976 AND SHALL BE PROSECUTED ONLY IN THE PRESENCE OF THE COUNTY ENGINEER.
- THE CONTRACTOR SHALL NOTIFY THE ENGINEER DIVISION BY TELEPHONE, 219-574-1825, AT LEAST TWENTY-FOUR HOURS BEFORE STARTING ANY WORK UNDER THIS CONTRACT.
- HOUSE LATERALS TO BE CONSTRUCTED WITH INVERTS AT PROPERTY LINE & FEET BELOW CURB GRADE EXCEPT AS NOTED.
- WYE OR TEE BRANCHES MAY BE USED FOR CONNECTIONS TO MAINLINE SEWERS EXCEPT AS NOTED.
- ALL STRUCTURES SHALL BE EITHER BRICK MANHOLES PER S-3 OR PRECAST CONCRETE MANHOLES PER S-36, EXCEPT AS NOTED.
- PROVIDE STAKES ON THE PROPERTY LINE OR PROPERTY LINES PRODUCED AT RIGHT ANGLES TO THE SEWER LINE AT THE CENTER LINE OF EACH MANHOLE.
- MANHOLE TOPS IN UNIMPROVED RIGHTS OF WAY TO BE SIX INCHES ABOVE FINISHED GRADE.
- VITRIFIED CLAY PIPE JOINTS SHALL BE TYPE "D", "T", OR "O" PER STANDARD SPECIFICATIONS SECTION 308-2.
- IF A POWER POLE IS WITHIN THREE FEET OF THE SEWER, THE SEWER SHALL BE ENCASED, PER S-23, CASE II, TWO FEET ON EACH SIDE FROM THE POINT OF INTERFERENCE.
- IF DURING THE COURSE OF CONSTRUCTION IT IS DETERMINED THAT THERE IS LESS THAN FOUR FEET OF COVER OVER THE TOP OF A MAIN LINE OR HOUSE LATERAL V.C.P. SEWER WHICH IS NOT INDICATED ON THE PLANS, THE PIPE SHALL BE ENCASED PER S-23, CASE II UNLESS OTHERWISE APPROVED BY THE COUNTY ENGINEER.
- ALL JOINTS BETWEEN CAST IRON PIPE AND VITRIFIED CLAY PIPE SHALL BE MADE WITH A RUBBER SLEEVE JOINT, TYPE "C" OR "B", WITH BUSHING IF NECESSARY PER STANDARD SPECIFICATIONS, SECTION 308-2.
- SEWERS TO BE TESTED FOR LEAKAGE PER SECTION 306-1.6 OF THE STANDARD SPECIFICATIONS AND SPECIAL PROVISIONS.
- RESURFACE ALL TRENCHES WITHIN PAVED AREAS TO MEET L.A. COUNTY ROAD DEPT. OR CALIFORNIA STATE HIGHWAY REQUIREMENTS IN ACCORDANCE WITH PERMITS.
- FULL COMPLIANCE WITH SECTION 306.1.5.3 OF THE SPECIAL PROVISIONS WILL BE REQUIRED FOR BACKFILL IN STREETS. CERTIFICATION OF BACKFILL COMPACTION AND SAND EQUIVALENTS BY A QUALIFIED, REGISTERED TESTING LABORATORY SHALL BE PROVIDED BY THE PERMITTEE PRIOR TO THE ISSUANCE OF A CERTIFICATE OF PARTIAL ACCEPTANCE.
- SPECIAL BACKFILL IN DESIGNATED AREAS:
 BACKFILL TRENCH AND REMAINING OTHER EXPOSED SOIL IS TO BE COVERED WITHIN 24 HOURS OF FINISHED GRADE AND PROPERLY COMPACTION AND SAND EQUIVALENTS BY THE REGISTERED TESTING LABORATORY SHALL BE PROVIDED BY THE PERMITTEE PRIOR TO THE ISSUANCE OF A CERTIFICATE OF PARTIAL ACCEPTANCE. ALL BACKFILL AND SOILS REPLACED SHALL BE COMPACTED TO A MINIMUM OF 90% MAXIMUM DENSITY PER ASTM STANDARD METHOD OF TESTING GRAVE SITE IF MODIFIED. ACCEPTABLE CERTIFICATION OF SOIL COMPACTION SHALL BE SUBMITTED TO THE REGIONAL DIVISIONAL OFFICE.

REVISION NO. 1
 RAISED MAINLINE ON HILLMAN DRIVE (P.C. 9339)
 RAISED MAINLINE ON DEEP LANE DRIVE (P.C. 9341)
 BETWEEN STA. 6+15.08 AND STA. 6+15.00.
 RAISED MAINLINE ON BIRDS EYE DRIVE (P.C. 9339)
 BETWEEN STA. 6+17.13 AND STA. 15+07.10.
 APPROVED: Thomas E. Howard R.C.E. No. 19156
 JUN. 25, 1978

PROFILE, ALIGNMENT AND GRADE OF
SANITARY SEWERS PAGE 1
 CONSTRUCTED IN
TRACT No. 31677
PRIVATE CONTRACT NO. 9339
 W.S. 39-B-4
 9 SHEETS, 6 PAGES
 SCALE: VERT. 1" = 8'
 HORIZ. 1" = 40'
 DECEMBER, 1976
 PREPARED IN THE OFFICES OF
 KEMMERER ENGINEERING CO. INC.
 6705 S. PAINTER AVE. WHITTIER, CA 90608
 BY: Robert R. Flores R.C.E. No. 11549

THE FOLLOWING LATEST REVISED STANDARD PLANS ON FILE IN THE OFFICE OF THE COUNTY ENGINEER SHALL APPLY IN THE CONSTRUCTION OF THIS PROJECT.

LEGEND	S-1
MINIMUM PUBLIC SAFETY REQUIREMENTS	S-2
BRICK MANHOLE	S-3
STANDARD MANHOLE STEP	S-17
BEDDING FOR SEWER PIPE	S-21
CRADLING AND ENCASMENT	S-23
WYE OR TEE SUPPORT	S-26
ALLOWABLE TRENCH WIDTHS	S-28
LOCKING MANHOLE FRAME AND COVER	S-35
NON-REINFORCED PRECAST CONCRETE MANHOLE	S-36

NO CONNECTION FOR THE DISPOSAL OF INDUSTRIAL WASTES SHALL BE MADE TO SEWERS SHOWN ON THESE DRAWINGS UNLESS A PERMIT FOR INDUSTRIAL WASTE WATER DISCHARGE HAS BEEN ISSUED BY THE SANITATION DISTRICTS FOR SAID CONNECTION. BEFORE BREAKING INTO OR CONSTRUCTION ON A COUNTY SANITATION DISTRICT SEWER AND PRIOR TO FINAL ACCEPTANCE OF THE PROJECT SANITATION DISTRICT INSPECTOR SHALL BE NOTIFIED BY PHONE 962-8005 SO THAT REQUIRED INSPECTION CAN BE MADE.

COUNTY OF LOS ANGELES, CALIFORNIA
 DEPARTMENT OF COUNTY ENGINEER JOHN D. PARKHURST, CHIEF ENGINEER
 APPROVED: Thomas E. Howard REGIONAL ENGINEER
 CHECKED: Thomas E. Howard
 REG. C.E. NO. 19156
 JAN DIMAS BLDG. DIST. 10 J.N. 022002

