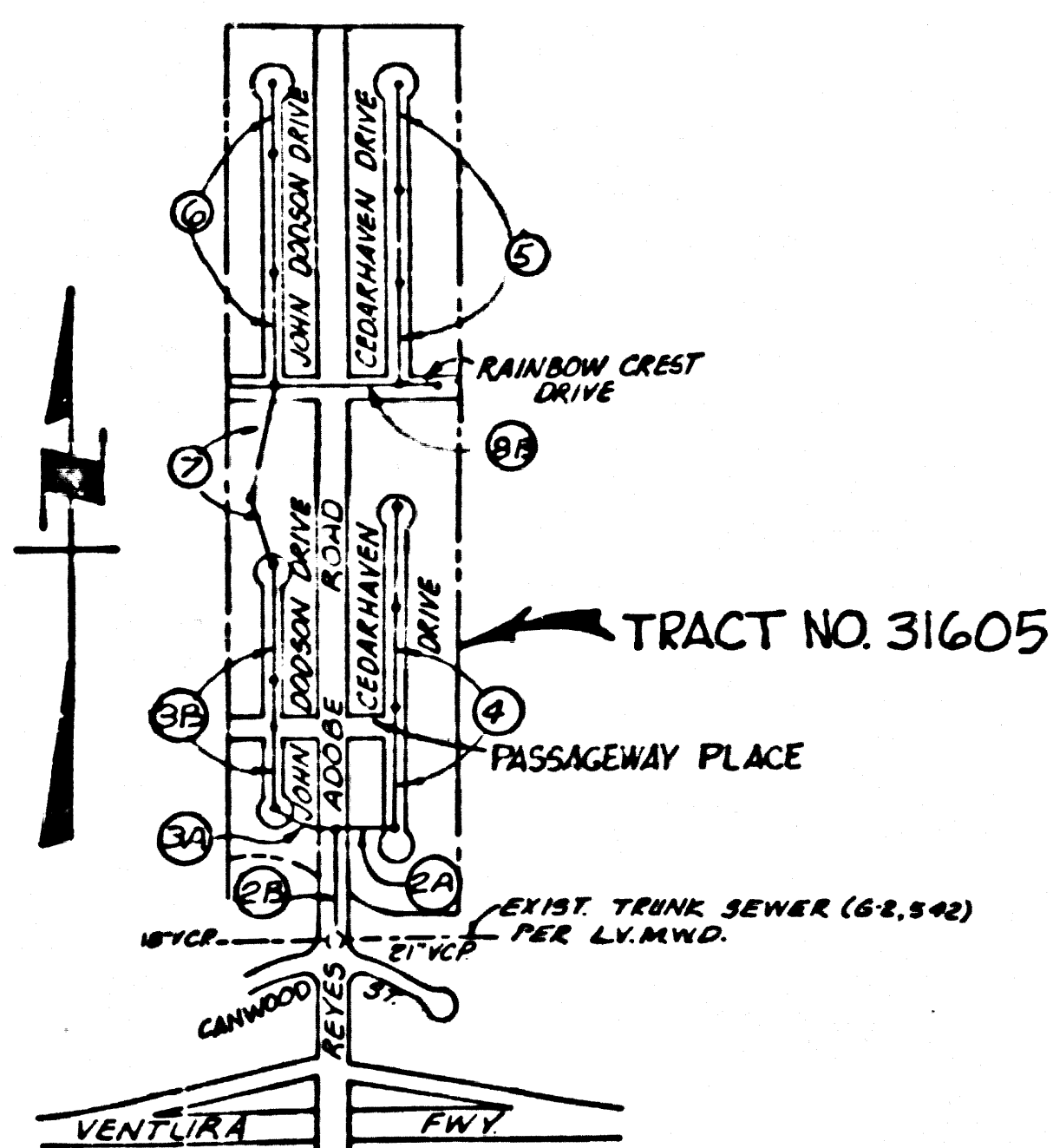


B.M. BY 7554 ELEV. 828.207  
 ROBM TAG 2' SCB AT SE CORNER REYES ADOBE ROAD OVERCROSSING + WEST BOUND ON-OFF RAMP VEN FWY 00' S + 22' E @ INT. MALIBU QUAD. 19.72



P.C. 9342  
 INDEX MAP  
 SCALE: 1" = 600'

NOTE: ENCIRCLED NUMBERS INDICATE PAGE NUMBERS

NOTE:  
 THE L.V.M.W.D. MUST BE NOTIFIED 24 HRS. PRIOR TO CONNECTION.

Revision No 3 Dec 8, 1979  
 Delete Sewer Lateral @ Sta 1+50  
 Approved Ralph D. Stewart 12/6/79  
 Office of County Engr. R.C.E. 16157

Revision No 2 Oct. 8, 1979  
 Add Sewer Lateral @ Sta 1+50  
 Approved Ralph D. Stewart 10/14/79  
 Office of County Engr. R.C.E. #16157

REVISION NO. 1 OCT. 19, 1978  
 CHANGED SEWER GRADES PAGE 5, STA. 0+00 TO STA. 8+03 AND PAGE 6, STA. 13+03.72 TO STA. 20+13.00 AND COVER SPONDING M.H. INLET ELEV. ON PAGES 7 AND 8  
 APPROVED Martina L. Murphy 10-25-78  
 OFFICE OF COUNTY ENGINEER, R.C.E. N.B. 18574

GENERAL NOTES:

- ELEVATIONS ARE IN FEET ABOVE U.S.C. & G.S. SEA LEVEL DATUM OF 1929.
- NO REVISIONS SHALL BE MADE IN THESE PLANS WITHOUT THE APPROVAL OF THE COUNTY ENGINEER.
- NO REPRESENTATIVE OF THE COUNTY ENGINEER WILL SURVEY OR LAY OUT ANY PORTION OF THE WORK.
- GRADES TO WHICH THIS IMPROVEMENT IS TO BE CONSTRUCTED ARE SHOWN ON PLANS AND PROFILES. GRADE POINTS FOR TOP OF CURBS, CENTER LINE OF STREETS, OR CENTER LINE OF ALLEYS ARE SHOWN BY CIRCLES ON PROFILES. AT ALL POINTS BETWEEN DESIGNATED POINTS THE GRADE SHALL BE ESTABLISHED SO AS TO CONFORM TO A STRAIGHT LINE DRAWN BETWEEN SAID DESIGNATED POINTS.
- THE PRIVATE ENGINEER SHALL FURNISH THE COUNTY ENGINEER WITH GRADE SHEETS AND STATING FOR ALL HOUSE LATERALS AND "T" OR "Y" BRANCHES AND SHALL PROVIDE STAKES FOR THEM AT THEIR PROPOSED LOCATIONS WITH STATIONING PLAINLY MARKED. ALL HOUSE LATERALS SHALL BE CONSTRUCTED IN A STRAIGHT ALIGNMENT AT RIGHT ANGLES FROM THE MAIN LINE SEWER EXCEPT AS SHOWN ON THE PLANS. HOUSE LATERALS FROM CHIMNEYS SHALL NOT HAVE AN ANGLE OF LESS THAN 45° WITH THE MAIN LINE SEWER. ANY CHANGE IN ALIGNMENT SHALL BE REQUESTED IN WRITING BY THE PRIVATE ENGINEER.
- THE PRIVATE ENGINEER SHALL FURNISH THE HOUSE LATERAL DEPTH AT THE PROPERTY LINE BELOW THE TOP OF CURB ELEVATION FOR EACH HOUSE LATERAL ON THE GRADE SHEET.
- BEFORE WORK CAN BE STARTED, THE CONTRACTOR MUST OBTAIN A PERMIT TO EXCAVATE IN COUNTY STREETS FROM THE L.A. COUNTY ROAD DEPT., DISTRICT OFFICE NO. 3, AND PAY A FEE TO THE COUNTY ENGINEER, AT THE MALIBU REGIONAL OFFICE, TO COVER THE COST OF CONSTRUCTION INSPECTION AND RECORD PLANS.
- IF WORK IS TO BE DONE IN A STATE HIGHWAY, A PERMIT MUST BE OBTAINED FROM THE STATE OF CALIFORNIA, DIVISION OF HIGHWAYS, 330 SOUTH SPRING STREET, LOS ANGELES, CALIFORNIA.
- APPROVAL OF THIS PLAN BY THE COUNTY OF LOS ANGELES DOES NOT CONSTITUTE A REPRESENTATION AS TO THE ACCURACY OF THE LOCATION OF OR THE EXISTENCE OR NON-EXISTENCE OF ANY UNDERGROUND UTILITY PIPE, OR STRUCTURE WITHIN THE LIMITS OF THIS PROJECT. THIS NOTE APPLIES TO ALL PAGES.
- REFER TO SECTION 7-10.41 OF THE STANDARD SPECIFICATIONS, REGARDING SAFETY ORDERS.
- THE UNDERGROUND UTILITY COMPANIES WITHIN THE LIMIT OF THIS PROJECT ARE AS FOLLOWS:
  - WATER: LAS VIRGENES MUNICIPAL WATER DISTRICT (213) 800-4100
  - SEWER: LAS VIRGENES MUNICIPAL WATER DISTRICT (213) 800-4100
  - ELECTRIC: SOUTHERN CALIFORNIA Edison CO. (213) 803-3130
  - Gas: SOUTHERN CALIFORNIA GAS CO. (213) 883-3130
  - TELEPHONE: PACIFIC TELEPHONE CO. (213) 306-0020
- PRIOR TO ISSUANCE OF THE REQUIRED SEWER CONSTRUCTION PERMIT BY THE COUNTY ENGINEER THE CONTRACTOR SHALL OBTAIN A PERMIT TO EXCAVATE FROM THE STATE OF CALIFORNIA, DIVISION OF INDUSTRIAL SAFETY.

DOUBLE SCALE

TO BE CONSTRUCTED IN  
**TRACT No 31605**  
**PRIVATE CONTRACT NO. 9342**

W.S. 90, D-1&2  
 4 SHEETS; 8 PAGES

47605

SCALE: VERT. 1" = 8'  
 HORIZ. 1" = 40'  
 MAY, 1977  
 PREPARED IN THE OFFICES OF  
**WIDOMER & ASSOCIATES**  
 973 WESTLAKE BLVD. SUITE 203  
 WESTLAKE VILLAGE, CALIF 91361  
 BY: *K. G. G.*  
 REG. C. E. No. 11758

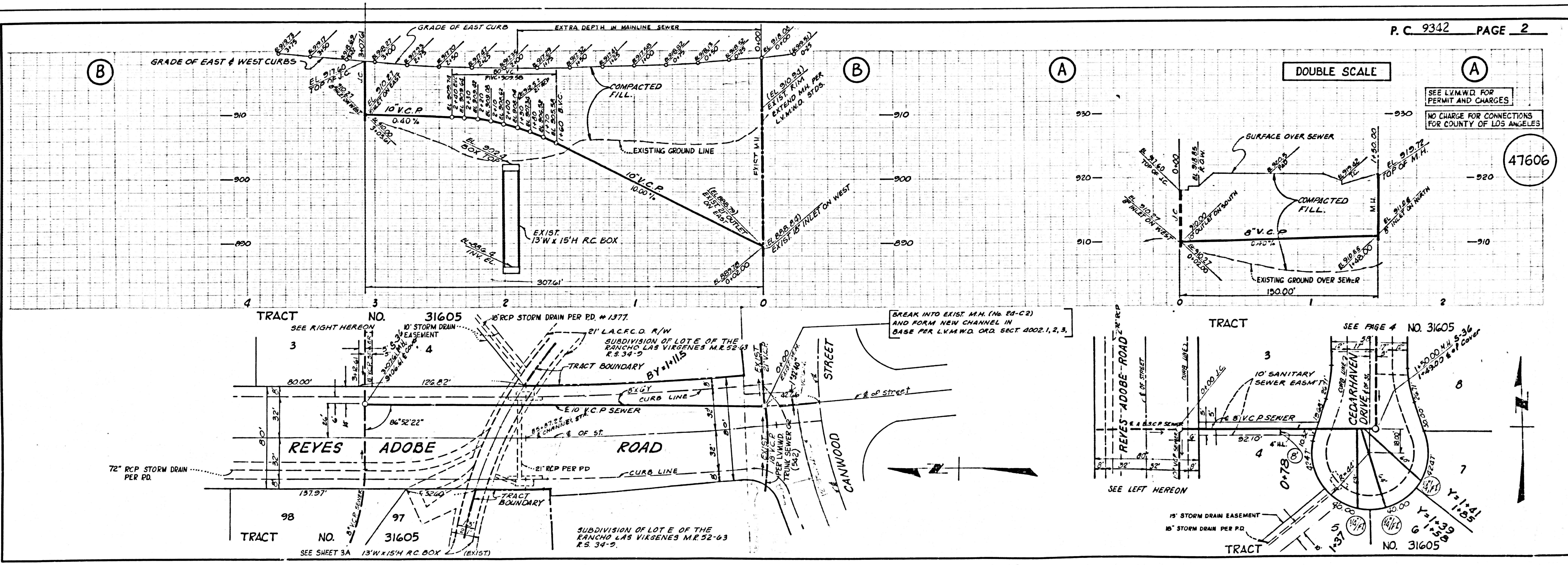
THE FOLLOWING LATEST REVISED STANDARD PLANS ON FILE IN THE OFFICE OF THE COUNTY ENGINEER SHALL APPLY IN THE CONSTRUCTION OF THIS PROJECT.

LEGEND	8-1
MINIMUM PUBLIC SAFETY REQUIREMENTS	8-2
BRICK MANHOLE	8-3
STANDARD MANHOLE STEP	8-17
BEDDING FOR SEWER PIPE	8-21
CRADLING AND ENCASEMENT	8-23
WYE OR TEE SUPPORT	8-26
ALLOWABLE TRENCH WIDTHS	8-29
LOCKING MANHOLE FRAME AND COVER	8-31
NON-REINFORCED PRECAST CONCRETE MANHOLE	8-34

CONSTRUCTION NOTES:

- WORK SHALL BE CONSTRUCTED ACCORDING TO THE STANDARD SPECIFICATIONS FOR PUBLIC WORKS CONSTRUCTION (1976 EDITION) 1 AND COUNTY ENGINEER SPECIAL PROVISIONS FOR THE CONSTRUCTION OF SANITARY SEWERS DATED SEP. 21, 1976 AND SHALL BE PROSECUTED ONLY IN THE PRESENCE OF THE COUNTY ENGINEER.
- THE CONTRACTOR SHALL NOTIFY THE DESIGN DIVISION BY TELEPHONE, (213) 974-7283, AT LEAST TWENTY-FOUR HOURS BEFORE STARTING ANY WORK UNDER THIS CONTRACT.
- HOUSE LATERALS TO BE CONSTRUCTED WITH INVERTS AT PROPERTY LINE 6 FEET BELOW CURB GRADE EXCEPT AS NOTED.
- WYE OR TEE BRANCHES MAY BE USED FOR CONNECTIONS TO MAINLINE SEWERS EXCEPT AS NOTED.
- ALL STRUCTURES SHALL BE EITHER BRICK MANHOLES PER S-3 OR PRECAST CONCRETE MANHOLES PER S-34, EXCEPT AS NOTED.
- PROVIDE STAKES ON THE PROPERTY LINE OR PROPERTY LINES PRODUCED AT RIGHT ANGLES TO THE SEWER LINE AT THE CENTER LINE OF EACH MANHOLE.
- MANHOLE TOPS IN IMPROVED RIGHTS OF WAY TO BE PLUMB WITH ABOVE FINISHED GRADE.
- VITRIFIED CLAY PIPE JOINTS SHALL BE TYPE "D", "F", OR "G" PER STANDARD SPECIFICATIONS SECTION 306-3.
- IF A POWER POLE IS WITHIN THREE FEET OF THE SEWER, THE SEWER SHALL BE ENCASED, PER S-23, CASE II, TWO FEET ON EACH SIDE FROM THE POINT OF INTERFERENCE.
- IF DURING THE COURSE OF CONSTRUCTION IT IS DETERMINED THAT THERE IS LESS THAN FOUR FEET OF COVER OVER THE TOP OF A MAIN LINE OR HOUSE LATERAL V.C.P. SEWER WHICH IS NOT INDICATED ON THE PLANS, THE PIPE SHALL BE ENCASED PER S-23, CASE II UNLESS OTHERWISE APPROVED BY THE COUNTY ENGINEER.
- ALL JOINTS BETWEEN CAST IRON PIPE AND VITRIFIED CLAY PIPE SHALL BE MADE WITH A RUBBER SLEEVE JOINT, TYPE "C" OR "D", WITH BUSHING IF NECESSARY PER STANDARD SPECIFICATIONS SECTION 306-3.
- SEWERS TO BE AIR PRESSURE TESTED PER SECTION 306-6 OF THE STANDARD SPECIFICATIONS AND SPECIAL PROVISIONS.
- RESURFACE ALL TRENCHES WITHIN PAVED AREAS TO MEET L.A. COUNTY ROAD DEPT. OR CALIFORNIA STATE HIGHWAY REQUIREMENTS IN ACCORDANCE WITH PERMITS.
- FULL COMPLIANCE WITH SECTION 306-1.3.5 OF THE SPECIAL PROVISIONS WILL BE REQUIRED FOR BACKFILL IN STEEPS. CERTIFICATION OF BACKFILL COMPACTION AND SAND COUNTS BY A QUALIFIED, REGISTERED TESTING LABORATORY SHALL BE PROVIDED BY THE PERMITTEE PRIOR TO THE ISSUANCE OF A CERTIFICATE OF PARTIAL ACCEPTANCE.
- THE CONTRACTOR SHALL NOTIFY L.V.M.W.D. BY TELEPHONE, (213) 800-4110, AT LEAST TWENTY-FOUR HOURS BEFORE STARTING ANY WORK UNDER THIS CONTRACT. INDICATES HOUSE LATERALS TO BE CONSTRUCTED WITH 1% RISE PER FOOT TO PROPERTY LINE.

COUNTY OF LOS ANGELES, CALIFORNIA  
 STEPHEN J. KOONCE, COUNTY ENGINEER LAS VIRGENES MUNICIPAL WATER DISTRICT  
 APPROVED *John J. G...* REGIONAL ENGINEER DATED 10/20/79  
 APPROVED *W. E. Stokes* GENERAL MANAGER & CHIEF ENGINEER DATED 3/21/78  
 CHECKED *...* R.C.E. No. 18763 DATED 3/29/78  
 CALABASAS BLDG. DIST. 31 J.N. 0250.02

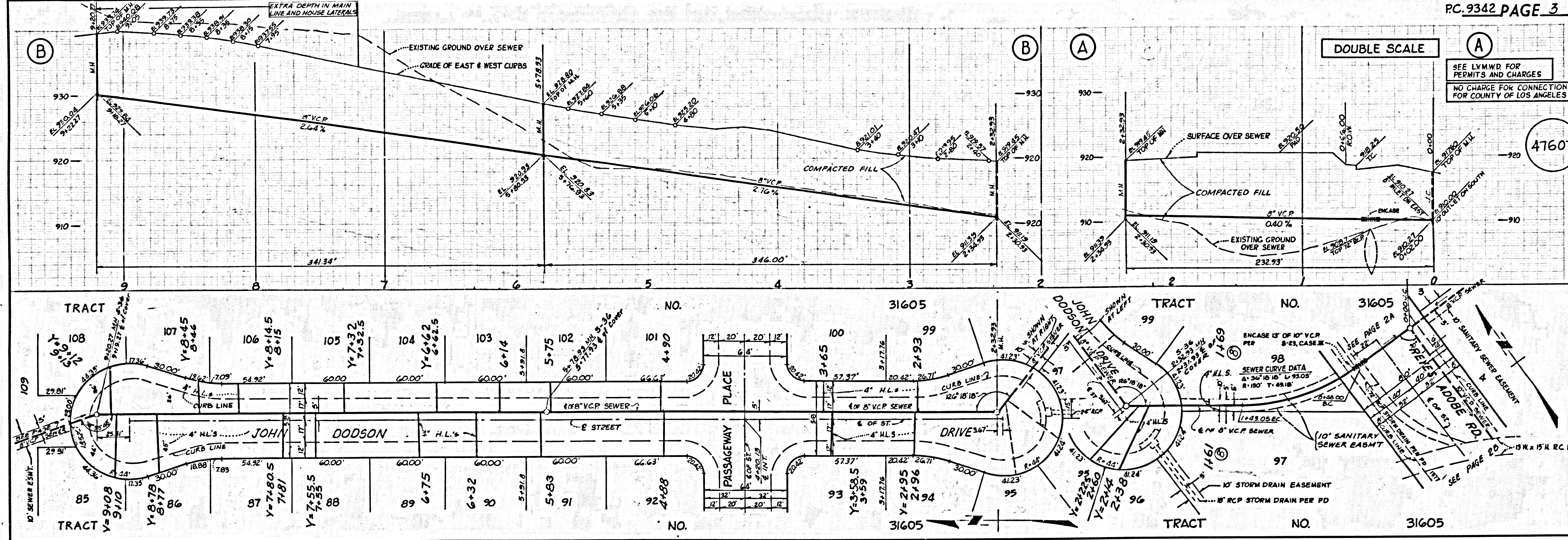


DOUBLE SCALE

SEE L.V.M.W.D. FOR PERMIT AND CHARGES  
 NO CHARGE FOR CONNECTIONS FOR COUNTY OF LOS ANGELES

47606

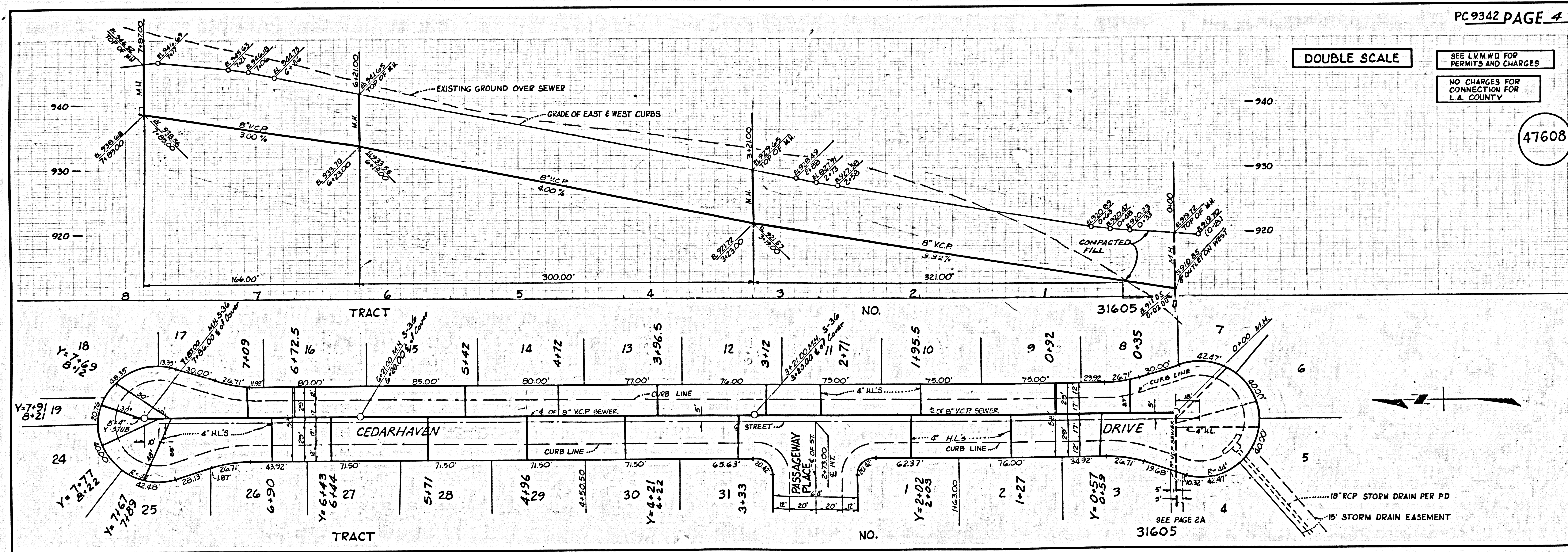




DOUBLE SCALE

SEE LVMWD FOR PERMITS AND CHARGES  
NO CHARGE FOR CONNECTIONS FOR COUNTY OF LOS ANGELES

47607



DOUBLE SCALE

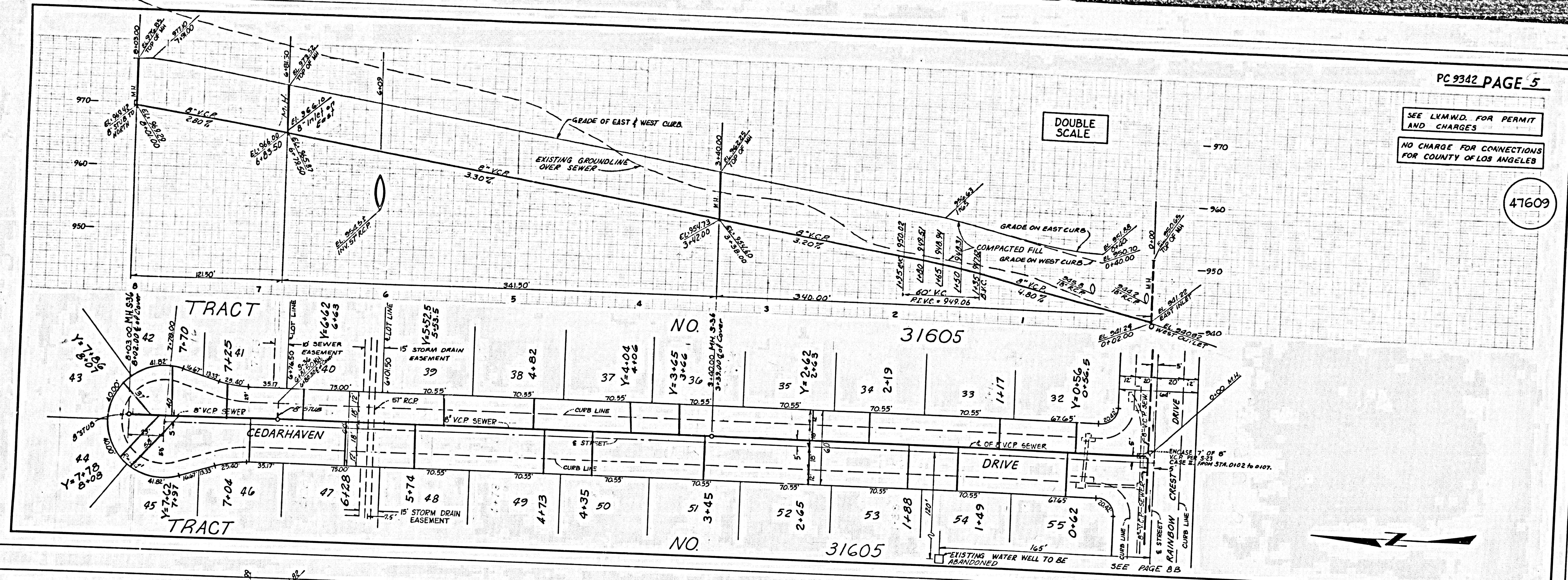
SEE LVMWD FOR PERMITS AND CHARGES  
NO CHARGES FOR CONNECTION FOR L.A. COUNTY

47608



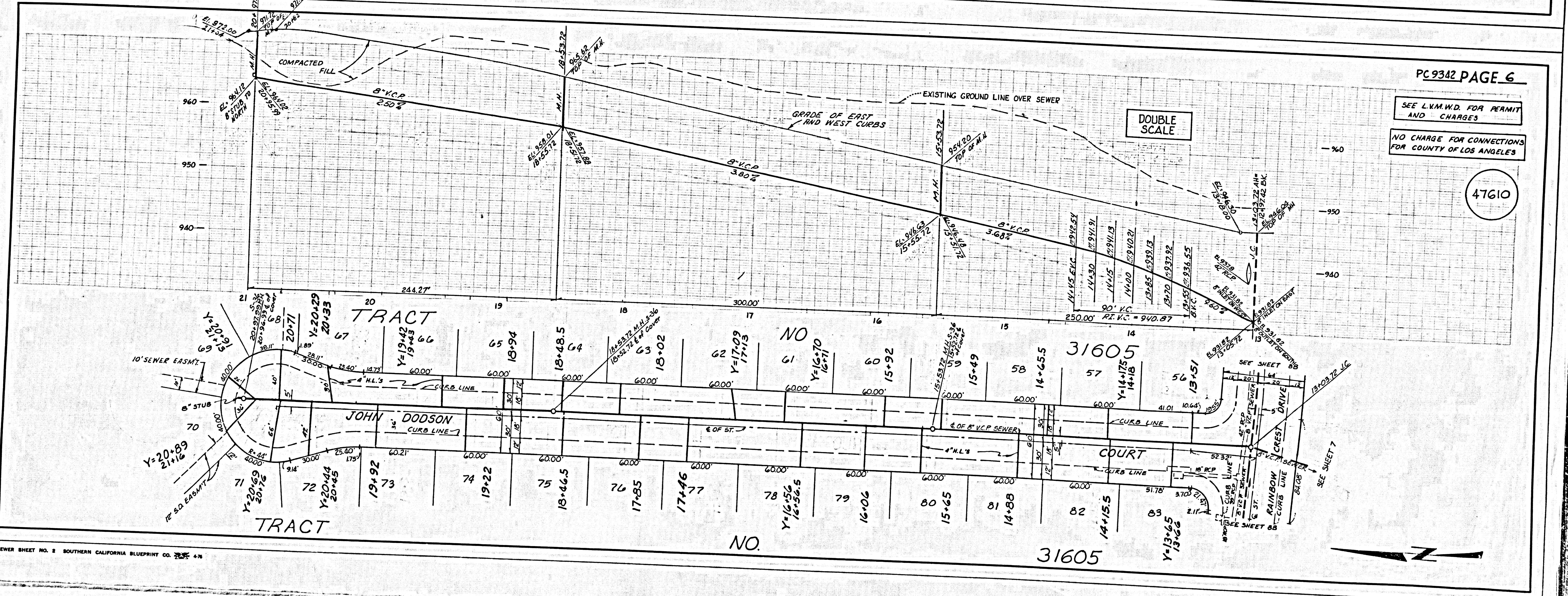
SEE L.M.W.D. FOR PERMIT AND CHARGES  
NO CHARGE FOR CONNECTIONS FOR COUNTY OF LOS ANGELES

47609



SEE L.M.W.D. FOR PERMIT AND CHARGES  
NO CHARGE FOR CONNECTIONS FOR COUNTY OF LOS ANGELES

47610



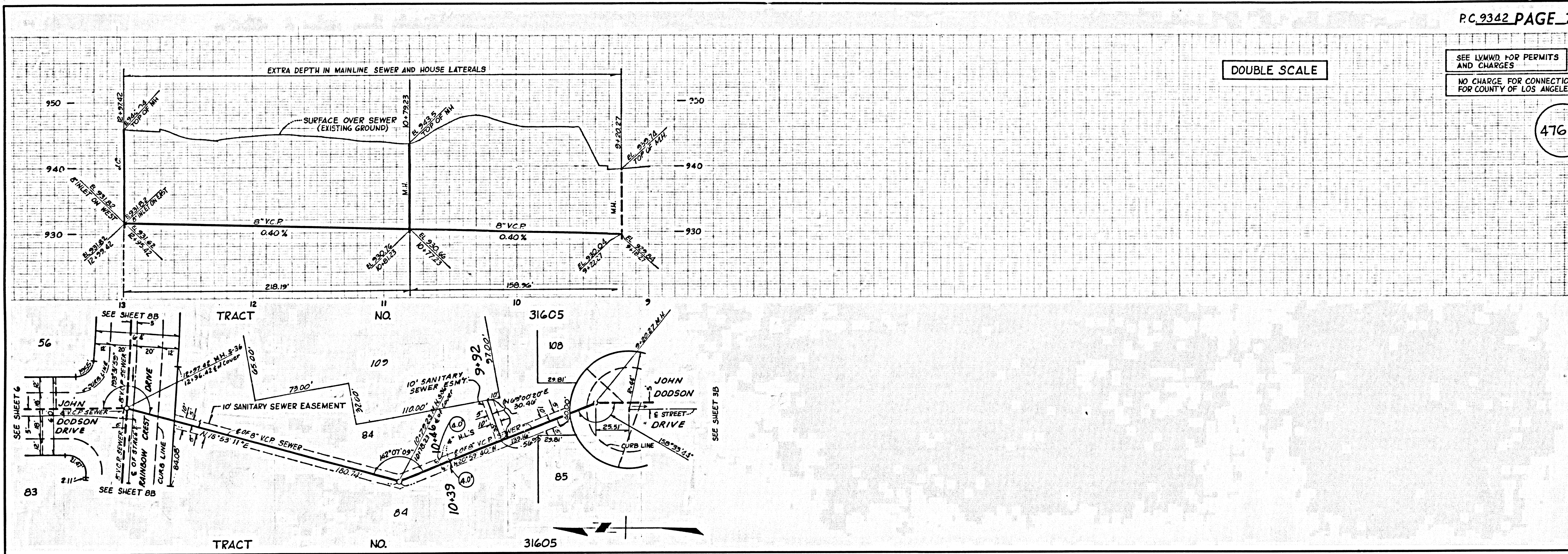


DOUBLE SCALE

SEE LVMWD FOR PERMITS AND CHARGES

NO CHARGE FOR CONNECTIONS FOR COUNTY OF LOS ANGELES

47611



DOUBLE SCALE

SEE LVMWD FOR PERMITS AND CHARGES

NO CHARGES FOR CONNECTIONS FOR COUNTY OF LOS ANGELES

47612

