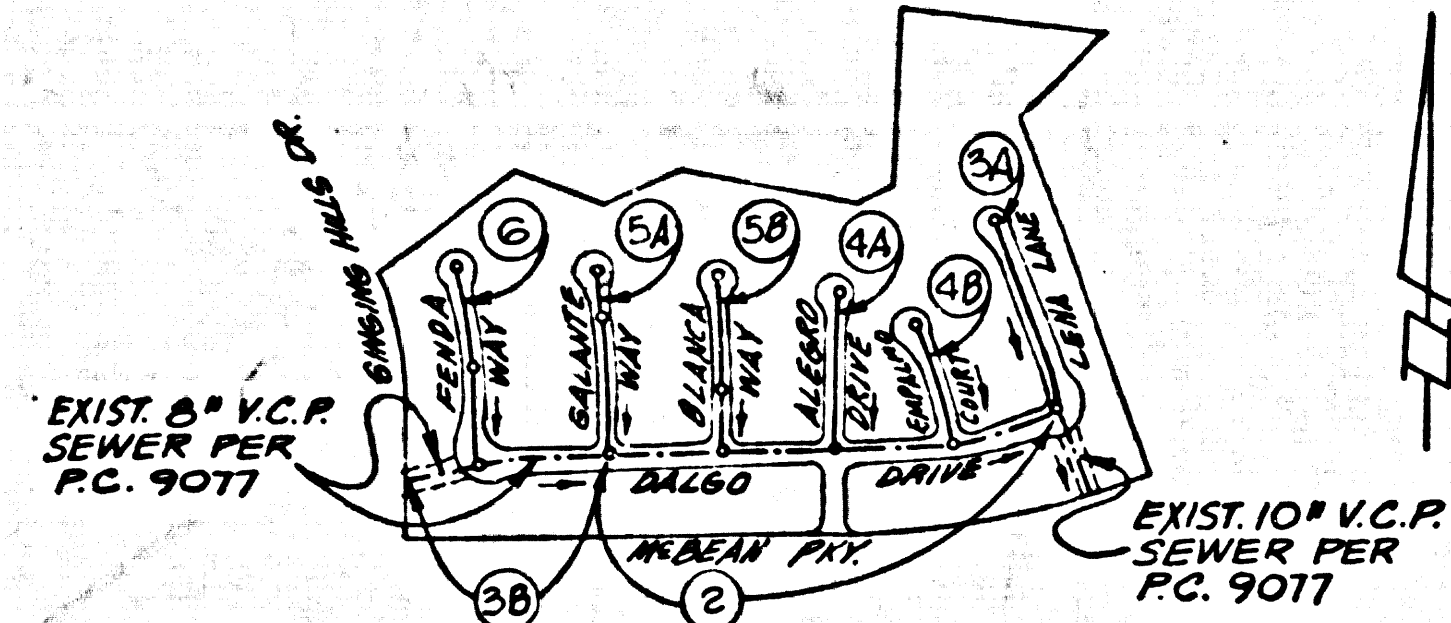


B.M. CL 4239 ELEV. 1280.814
 Rd. BM Top in N.C.B. McLean Parkway
 42.10' + 1240' E. Int. Townships
 Rd. 6' x 6' conc. Walk ent. to Loring
 House Tr.
 Northwell QUAD. 1972



NOTE: NUMBER IN CIRCLE INDICATES PAGE NUMBER

INDEX MAP
 TRACT NO. 32078
 SCALE 1" = 500'
 P.C. 9343

NO CONNECTION FOR THE DISPOSAL OF INDUSTRIAL WASTES SHALL BE MADE TO SEWERS SHOWN ON THESE DRAWINGS UNTIL A PERMIT FOR INDUSTRIAL WASTE WATER DISCHARGE HAS BEEN ISSUED BY THE SANITATION DISTRICTS FOR SAID CONNECTION.

Lots 110 & 111 are Parcel Lots & are not served.
 Lot 108 is a pedestrian walkway & is not served.

- GENERAL NOTES:**
- ELEVATIONS ARE IN FEET ABOVE U.S.C. & G.S. SEA LEVEL DATUM OF 1929.
 - NO REVISIONS SHALL BE MADE IN THESE PLANS WITHOUT THE APPROVAL OF THE COUNTY ENGINEER.
 - NO REPRESENTATIVE OF THE COUNTY ENGINEER WILL SURVEY OR LAY OUT ANY PORTION OF THE WORK.
 - GRADES TO WHICH THIS IMPROVEMENT IS TO BE CONSTRUCTED ARE SHOWN ON PLANS AND PROFILES. GRADE POINTS FOR TOP OF CURBS, CENTER LINE OF STREETS, OR CENTER LINE OF ALLEYS ARE SHOWN BY CIRCLES ON PROFILES. AT ALL POINTS BETWEEN DESIGNATED POINTS THE GRADE SHALL BE ESTABLISHED SO AS TO CONFORM TO A STRAIGHT LINE DRAWN BETWEEN SAID DESIGNATED POINTS.
 - THE PRIVATE ENGINEER SHALL FURNISH THE COUNTY ENGINEER WITH GRADE SHEETS AND STATIONING FOR ALL HOUSE LATERALS AND "T" OR "Y" BRANCHES AND SHALL PROVIDE STAKES FOR THEM AT THEIR PROPER LOCATIONS WITH STATIONING PLAINLY MARKED. ALL HOUSE LATERALS SHALL BE CONSTRUCTED ON A STRAIGHT ALIGNMENT AT RIGHT ANGLES FROM THE MAIN LINE SEWER EXCEPT AS SHOWN ON THE PLANS. HOUSE LATERALS FROM CHIMNEYS SHALL NOT HAVE AN ANGLE OF LESS THAN 45° WITH THE MAIN LINE SEWER. ANY CHANGE IN ALIGNMENT SHALL BE REQUESTED IN WRITING BY THE PRIVATE ENGINEER.
 - THE PRIVATE ENGINEER SHALL FURNISH THE HOUSE LATERAL DEPTH AT THE PROPERTY LINE BELOW THE TOP OF CURB ELEVATION FOR EACH HOUSE LATERAL ON THE GRADE SHEET.
 - BEFORE WORK CAN BE STARTED, THE CONTRACTOR MUST OBTAIN A PERMIT TO EXCAVATE IN COUNTY STREETS FROM THE COUNTY ROAD DEPT., DISTRICT OFFICE NO. 5, AND PAY A FEE TO THE COUNTY ENGINEER, SANTA CLARITA VALLEY REGIONAL OFFICE, TO COVER THE COST OF CONSTRUCTION INSPECTION AND RECORD PLANS.
 - IF WORK IS TO BE DONE IN A STATE HIGHWAY, A PERMIT MUST BE OBTAINED FROM THE STATE OF CALIFORNIA, DIVISION OF HIGHWAYS, 100 SOUTH BRINK STREET, LOS ANGELES, CALIFORNIA.
 - APPROVAL OF THIS PLAN BY THE COUNTY OF LOS ANGELES DOES NOT CONSTITUTE A REPRESENTATION AS TO THE ACCURACY OF THE LOCATION OF OR THE EXISTENCE OR NON-EXISTENCE OF ANY UNDERGROUND UTILITY PIPE, OR STRUCTURE WITHIN THE LIMITS OF THIS PROJECT. THIS NOTE APPLIES TO ALL PAGES.
 - REFER TO SECTION 7-10.1.3 OF THE STANDARD SPECIFICATIONS, REGARDING SAFETY ORDERS.
 - Plan to acquire of the required owner construction permit by the County Engineer, the Contractor shall obtain a permit to excavate, from the State of California, Division of Industrial Safety.

BEFORE BREAKING INTO OR CONSTRUCTION ON A COUNTY SANITATION DISTRICT SEWER AND PRIOR TO FINAL ACCEPTANCE OF THE PROJECT SANITATION DISTRICT INSPECTOR SHALL BE NOTIFIED BY PHONE 562-8509, SO THAT REQUIRED INSPECTION CAN BE MADE.

- CONSTRUCTION NOTES:**
- WORK SHALL BE CONSTRUCTED ACCORDING TO THE STANDARD SPECIFICATIONS FOR PUBLIC WORKS CONSTRUCTION (REVISIONS) AND COUNTY ENGINEER SPECIAL PROVISIONS FOR THE CONSTRUCTION OF SANITARY SEWERS DATED Sept. 21, 1976 AND SHALL BE PROSECUTED ONLY IN THE PRESENCE OF THE COUNTY ENGINEER.
 - THE CONTRACTOR SHALL NOTIFY THE SANTA CLARITA VALLEY DIVISION BY TELEPHONE, (213) 974-7289, AT LEAST TWENTY-FOUR HOURS BEFORE STARTING ANY WORK UNDER THIS CONTRACT.
 - HOUSE LATERALS TO BE CONSTRUCTED WITH INVERTS AT PROPERTY LINE 4 FEET BELOW CURB GRADE EXCEPT AS NOTED.
 - WYE OR TEE BRANCHES MAY BE USED FOR CONNECTIONS TO MAINLINE SEWERS EXCEPT AS NOTED.
 - ALL STRUCTURES SHALL BE EITHER BRICK MANHOLES PER S-3 OR PRECAST CONCRETE MANHOLES PER S-36.
 - PROVIDE STAKES ON THE PROPERTY LINE OR PROPERTY LINES PRODUCED AT RIGHT ANGLES TO THE SEWER LINE AT THE CENTER LINE OF EACH MANHOLE.
 - MANHOLES TOPS IN UNIMPROVED RIGHTS OF WAY TO BE SIX INCHES ABOVE FINISHED GRADE.
 - VERTICAL CLAY PIPE JOINTS SHALL BE TYPE "C" OR "D" PER STANDARD SPECIFICATIONS SECTION 308-2.
 - IF A POWER POLE IS WITHIN THREE FEET OF THE SEWER, THE SEWER SHALL BE ENCASED, PER S-2, CASE II, TWO FEET ON EACH SIDE FROM THE POINT OF INTERFERENCE.
 - IF DURING THE COURSE OF CONSTRUCTION IT IS DETERMINED THAT THERE IS LESS THAN FOUR FEET OF COVER OVER THE TOP OF A MAIN LINE OR HOUSE LATERAL V.C.P. SEWER WHICH IS NOT INDICATED ON THE PLANS, THE PIPE SHALL BE ENCASED PER S-2, CASE II UNLESS OTHERWISE APPROVED BY THE COUNTY ENGINEER.
 - ALL JOINTS BETWEEN CAST IRON PIPE AND VITRIFIED CLAY PIPE SHALL BE MADE WITH A RUBBER SLEEVE JOINT, TYPE "C" OR "D", (WITH BUSHING IF NECESSARY) PER STANDARD SPECIFICATIONS, SECTION 308-2.
 - SEWERS TO BE TESTED FOR LEAKAGE PER SECTION 304-1.6 OF THE STANDARD SPECIFICATIONS AND SPECIAL PROVISIONS.
 - REINFORCE ALL TRENCHES WITHIN PAVED AREAS TO MEET L.A. COUNTY ROAD DEPT. OR CALIFORNIA STATE HIGHWAY REQUIREMENTS BY ACCORDANCE WITH PERMITS.
 - FULL COMPLIANCE WITH SECTION 306-1.9.8 OF THE SPECIAL PROVISIONS WILL BE REQUIRED FOR BACKFILL IN STREETS. CERTIFICATION OF BACKFILL COMPACTION AND SAND EQUIVALENTS BY A QUALIFIED, REGISTERED TESTING LABORATORY SHALL BE PROVIDED BY THE PERMITTEE PRIOR TO THE ISSUANCE OF A CERTIFICATE OF PARTIAL ACCEPTANCE.
 - SEE ANY AND ALL CONDITIONS TO BE CONSTRUCTED IN CONNECTION WITH THIS PROJECT. MANHOLE TO BE REMOVED AND REPLACED WITH 8" x 8" HOPE ON TIE USING TYPE "D" JOINTS.

CONSTRUCTED IN
TRACT No. 32078

PRIVATE CONTRACT NO. 9343
 INDEX 2558117

W.S. 62-A, 3
 3 SHEETS, 6 PAGES

SCALE: VERT. 1" = 4'
 HORIZ. 1" = 40'
 JULY, 1977
 PREPARED IN THE OFFICES OF

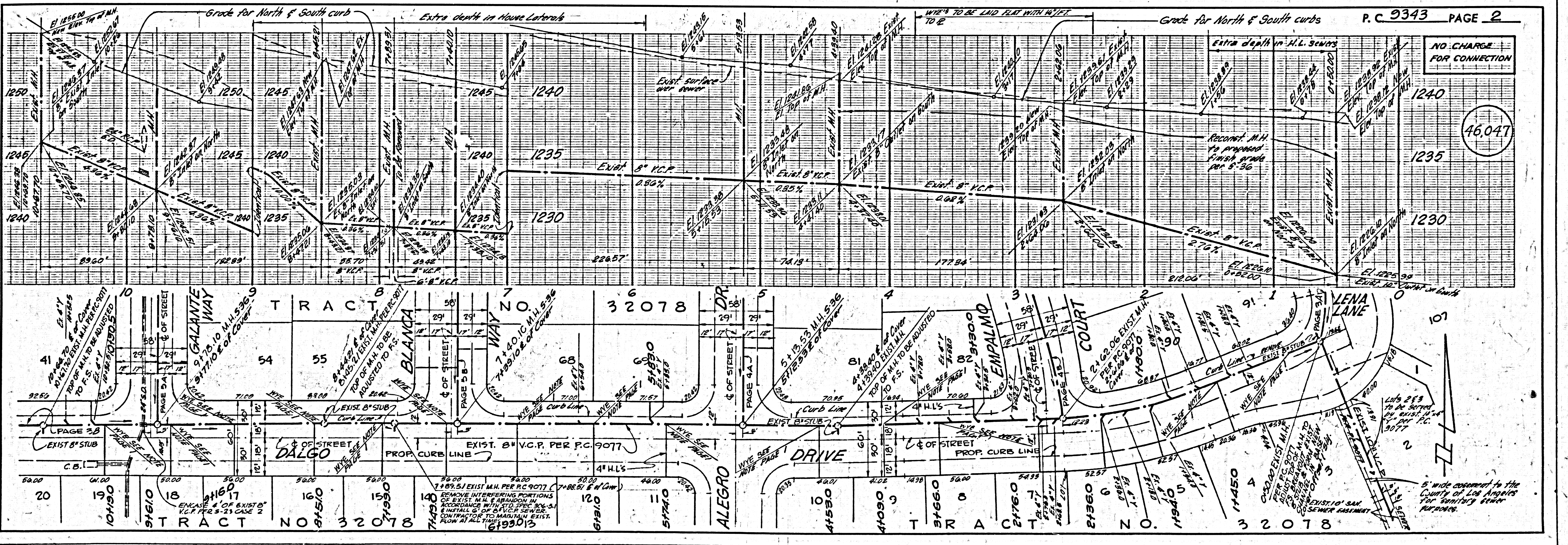
SIXAND ENGINEERING ASSOCIATES
 15233 BURBANK BLVD.
 VAN NUYS, CALIF. 91411 (213) 787-8350
 BY: Kenneth R. Sixand
 REG. C. E. No. 16913

46,046

THE FOLLOWING LATEST REVISED STANDARD PLANS ON FILE IN THE OFFICE OF THE COUNTY ENGINEER SHALL APPLY IN THE CONSTRUCTION OF THIS PROJECT:

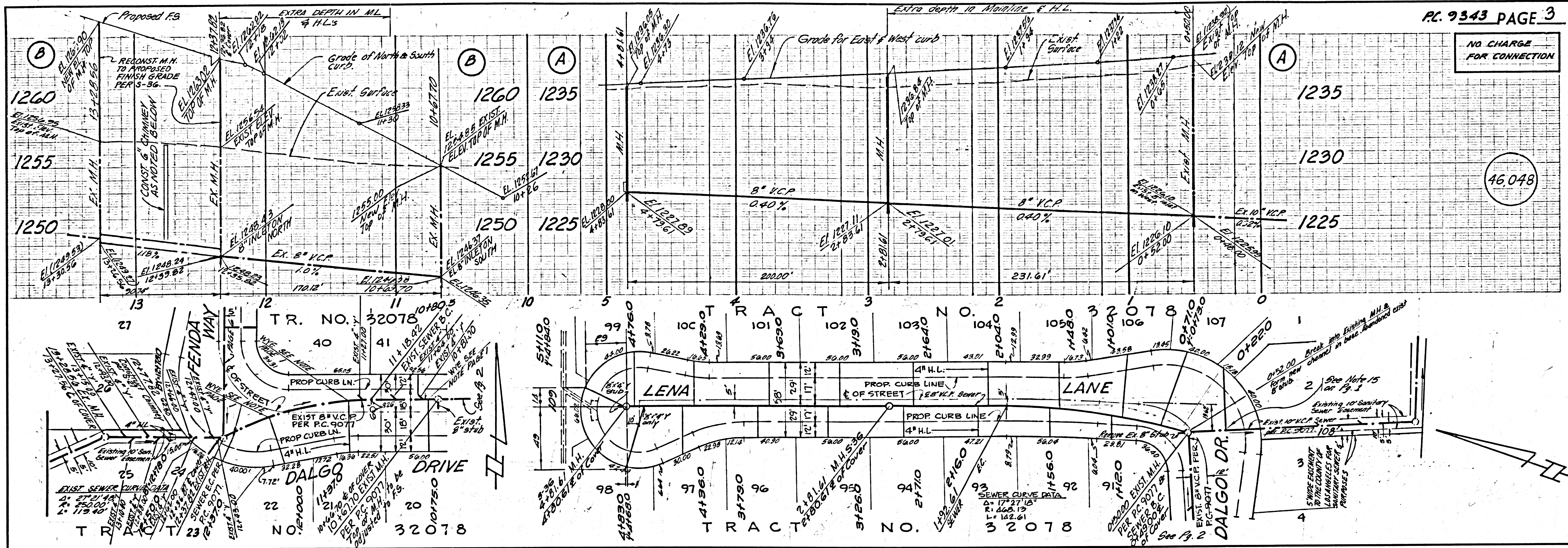
LEGEND	SECTION
MINIMUM PUBLIC SAFETY REQUIREMENTS	S-1
BRICK MANHOLE	S-3
STANDARD MANHOLE STEP	S-17
BEDDING FOR SEWER PIPE	S-21
CLADDING AND BACKFILLMENT	S-28
WYE OR TEE SUPPORT	S-26
ALLOWABLE TRENCH WIDTHS	S-23
LOCKING MANHOLE FRAME AND COVER	S-25
NON-REINFORCED PRECAST CONCRETE MANHOLE	S-36
CHIMNEY	S-27

COUNTY OF LOS ANGELES, CALIFORNIA
 DEPARTMENT OF COUNTY ENGINEER JOHN D. PARKHURST, CHIEF ENGINEER
 APPROVED Sam H. Nelson 7/20/77 REGIONAL ENGINEER (DATE) APPROVED Franklin D. ... 7/20/77 OFFICE ENGINEER (DATE)
 CHECKED R. J. Kopycky 7/20/77 (DATE)
 REG. C. E. NO. 16742
 SANTA CLARITA VALLEY BLDG. DIST. 82 I.N. 025002



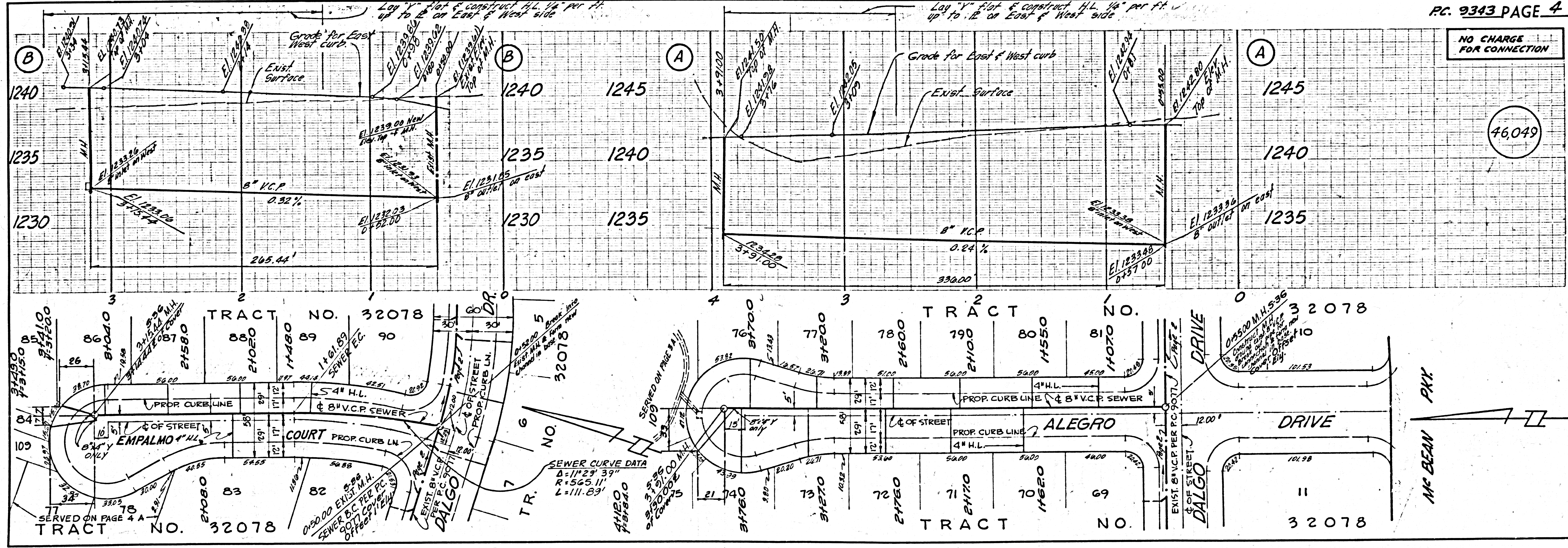
NO CHARGE FOR CONNECTION

46,048

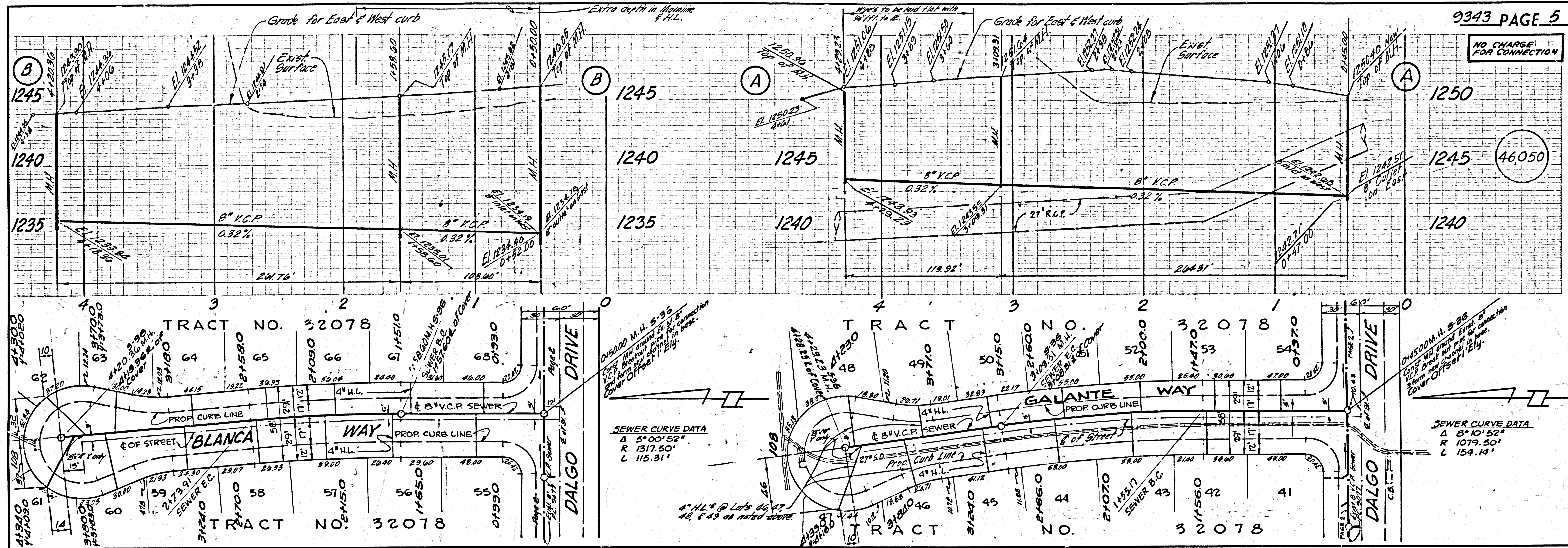


NO CHARGE FOR CONNECTION

46,049



NO CHARGE FOR CONNECTION



NO CHARGE FOR CONNECTION

