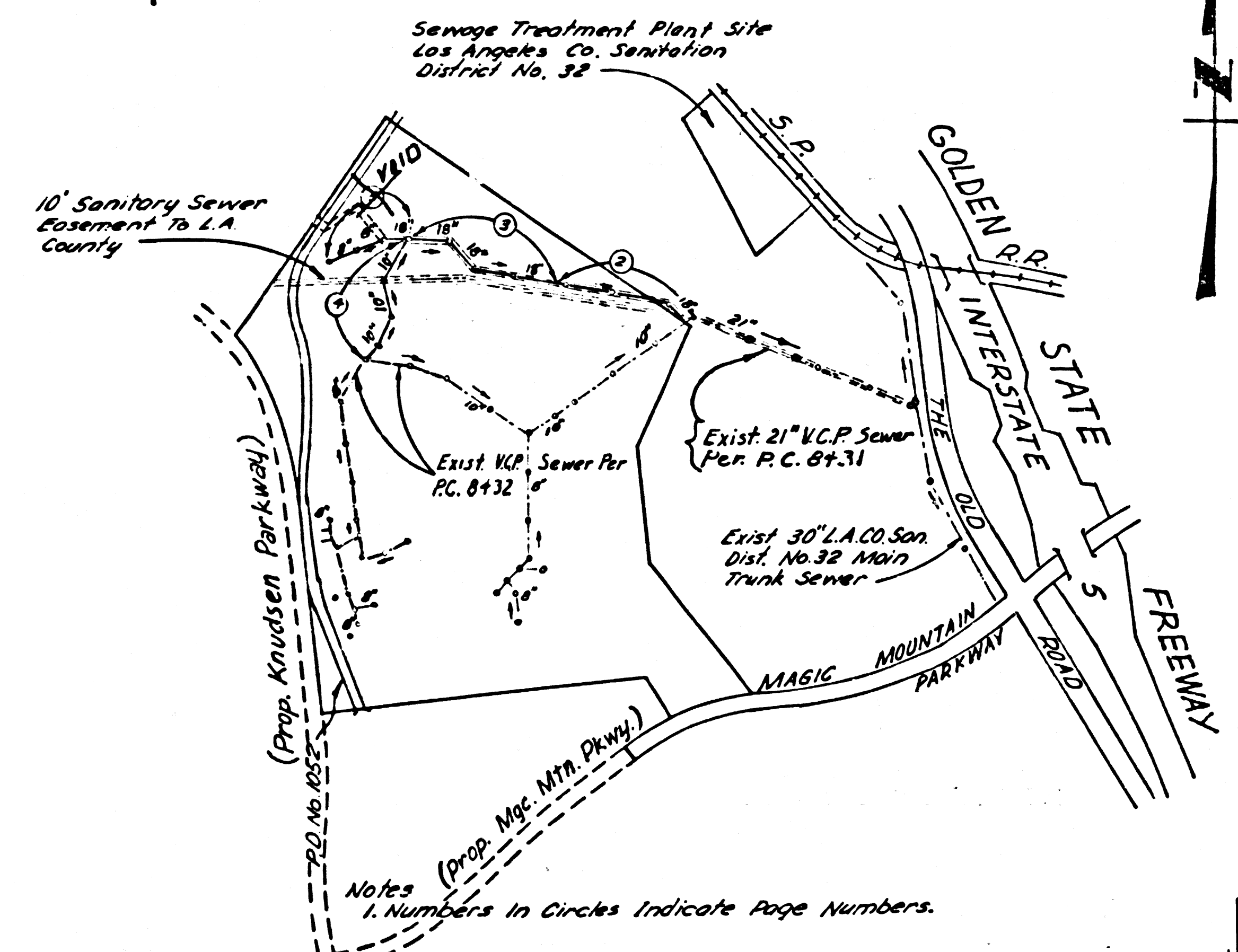


**SANITARY SEWERS**  
 CONSTRUCTED IN  
**MAGIC MOUNTAIN PARK**  
 FOR MAGIC MOUNTAIN OFFICE BUILDING  
 (FOR PRIVATE SEWER)  
**PRIVATE CONTRACT NO. 9360**  
 INDEX 267 S 105  
 W.S. 63  
 2 SHEETS, 4 PAGES

SCALE: VERT. 1"=4' HORIZ. 1"=40'  
 APRIL, 1977  
 PREPARED IN THE OFFICES OF  
**VALCON, INC.**  
 1420 THOUSAND OAKS BLVD.  
 THOUSAND OAKS, CALIF. 91320  
 P.O. 74-2046  
 REG. C. E. No. 13636

46,216

B.L. #1774 ELEV. 1078.072  
 Road B.M. Top - So. Curb Of Traffic  
 Island 15' N. of S. Roadway Of  
 Magic Mtn. Pkwy. E. To N. of Golden State Fwy.  
 NEVHALL QUAD. 19.65



**INDEX MAP**  
 Scale: 1"=1000'  
 P.C. 9360  
 (FOR PRIVATE SEWER)

REVISION NO. 2 NOV. 3 1977  
 VALLEY PAGE 5  
 MOVED HOUSE LATERAL ON  
 PAGE 4 FROM STA 19+74 TO  
 STA 22+00. ADDED 4" WVE TO  
 H.L. STA. 22+19.  
 APPROVED [Signature] DATE

REVISION NO. 1 OCT. 6 1977  
 ADDED 2 HOUSE LATERALS ON  
 PAGE 4 AT STA 19+74 AND STA  
 22+87. PLATTED ELEC. AND  
 WATER LINES WITHIN STATE  
 FAIR AREA.  
 APPROVED [Signature] DATE

**ALLOW NO CONSTRUCTION UNTIL  
 EASEMENT IS CLEARED AND  
 ALLOW NO CONNECTIONS UNTIL  
 EASEMENT IS DEDICATED TO  
 THE COUNTY OF LOS ANGELES**

NO CONNECTION FOR THE DISPOSAL OF INDUSTRIAL WASTES  
 SHALL BE MADE TO SEWERS SHOWN ON THESE OR WINGS UNTIL  
 A PERMIT FOR INDUSTRIAL WASTE WATER DISCHARGE HAS BEEN  
 ISSUED BY THE SANITATION DISTRICTS FOR SAID CONNECTION.

BEFORE BREAKING INTO OR CONSTRUCTION ON A COUNTY  
 SANITATION DISTRICT SEWER AND PRIOR TO THE COMMENCEMENT  
 OF THE PROJECT SANITATION DISTRICT INSPECTOR SHALL BE  
 NOTIFIED BY PHONE 962-8100, SO THAT REQUIRED INSPECTION  
 CAN BE MADE.

- Contractor Shall Replace In Kind, All Conduit, Lights, Walls, Stairs, Sidewalks, Irrigation Lines, Valves, Fences, Electrical Facilities, Except Landscaping, That Are Removed Or Damaged, Magic Mountain Parkway Will Remove And Replace All Landscaping Such As Bushes, Trees, And Shrubs; The Contractor Shall Coordinate Such Activities With Magic Mountain.
- All Trench Backfill To Comply With Standard Spec. 306-1.3.6. Except As Noted.
- Backfill May Be Jetted Or Mechanically Compacted In Accordance With Section 306-1.3 Of The Standard Specifications.
- The Contractor Shall Assume Sole And Complete Responsibility For Job Site Conditions During The Course Of Construction Of This Project, Including Safety Of All Persons And Property, And This Requirement Shall Apply Continuously And Not Be Limited To Normal Working Hours.
- Valcon, Inc. Has Not Been Retained Or Compensated, And Assumes No Responsibility To Provide Design And Construction Review Services Relating To The Contractors Safety Precautions, Or To Means, Techniques, Sequences Or Procedures Required For The Contractor To Perform His Work.
- The Location Of And Existence Of Or Non-Existence Of Underground Utilities Has Been Determined To The Best Of The Engineer's Ability, But It Shall Be The Sole Responsibility Of The Contractor To Determine The Location Of Any Existing Utilities, And To Take All Necessary Precautions To Avoid Damage To These Utilities. The Contractor Shall Assume Sole Responsibility For Any Damage Done To Existing Utilities During Construction.
- Special Backfill In Designated Areas: All Backfill And Earth Replaced Shall Be Compacted To A Minimum Of 90% Of Maximum Density Per A.S.T.M. Standard Method Of Test D698-57T As Modified, Acceptable Certification Of Such Compaction Shall Be Submitted To The Design Division.

**GENERAL NOTES:**

- ELEVATIONS ARE IN FEET ABOVE U.S.C. & G.S. SEA LEVEL DATUM OF 1929.
- NO REVISIONS SHALL BE MADE IN THESE PLANS WITHOUT THE APPROVAL OF THE COUNTY ENGINEER.
- NO REPRESENTATIVE OF THE COUNTY ENGINEER WILL SURVEY OR LAY OUT ANY PORTION OF THE WORK.
- GRADE TO WHICH THIS IMPROVEMENT IS TO BE CONSTRUCTED ARE SHOWN ON PLANS AND PROFILES. GRADE POINTS FOR TOP OF CURBS, CENTER LINE OF STREETS, OR CENTER LINE OF ALLEYS ARE SHOWN BY CIRCLES ON PROFILES. AT ALL POINTS BETWEEN DESIGNATED POINTS THE GRADE SHALL BE ESTABLISHED SO AS TO CONFORM TO A STRAIGHT LINE DRAWN BETWEEN SAID DESIGNATED POINTS.
- THE PRIVATE ENGINEER SHALL FURNISH THE COUNTY ENGINEER WITH GRADE SHEETS AND STATIONING FOR ALL HOUSE LATERALS AND "T" OR "T" BRANCHES AND SHALL PROVIDE STAKES FOR THEM AT 75-FEET PROPER LOCATIONS WITH STATIONING PLAINLY MARKED. ALL HOUSE LATERALS SHALL BE CONSTRUCTED IN A STRAIGHT ALIGNMENT AT RIGHT ANGLES TO THE MAIN LINE SEWER EXCEPT AS SHOWN ON THE PLANS. HOUSE LATERALS FROM CHIMNEYS SHALL NOT HAVE AN ANGLE OF LESS THAN 45° WITH THE MAIN LINE SEWER. ANY CHANGE IN ALIGNMENT SHALL BE REQUESTED IN WRITING BY THE PRIVATE ENGINEER.
- THE PRIVATE ENGINEER SHALL FURNISH THE HOUSE LATERAL DEPTH AT THE PROPERTY LINE BELOW THE TOP OF CURB ELEVATION FOR EACH HOUSE LATERAL ON THE GRADE SHEET.
- BEFORE WORK CAN BE STARTED, THE CONTRACTOR MUST OBTAIN A PERMIT TO EXCAVATE IN COUNTY STREETS FROM THE L.A. COUNTY ROAD DEPT., DISTRICT OFFICE NO. 5, AND PAY A FEE TO THE COUNTY ENGINEER, REGIONAL OFFICE, TO COVER THE COST OF CONSTRUCTION INSPECTION AND RECORD PLANS.
- IF WORK IS TO BE DONE IN A STATE HIGHWAY, A PERMIT MUST BE OBTAINED FROM THE STATE OF CALIFORNIA, DIVISION OF HIGHWAYS, 130 SOUTH SPRING STREET, LOS ANGELES, CALIFORNIA.
- APPROVAL OF THIS PLAN BY THE COUNTY OF LOS ANGELES DOES NOT CONSTITUTE A REPRESENTATION AS TO THE ACCURACY OF THE LOCATION OF OR THE EXISTENCE OR NON-EXISTENCE OF ANY UNDERGROUND UTILITY PIPE, OR STRUCTURE WITHIN THE LIMITS OF THIS PROJECT. THIS NOTE APPLIES TO ALL PAGES.
- REFER TO SECTION 716(A) OF THE STANDARD SPECIFICATIONS, REGARDING SAFETY DEVICES.
- PRIOR TO THE ISSUANCE OF THE REQUIRED SEWER CONSTRUCTION PERMIT BY THE COUNTY ENGINEER, THE CONTRACTOR SHALL OBTAIN A PERMIT TO EXCAVATE FROM THE STATE OF CALIFORNIA, DIVISION OF INDUSTRIAL SAFETY.

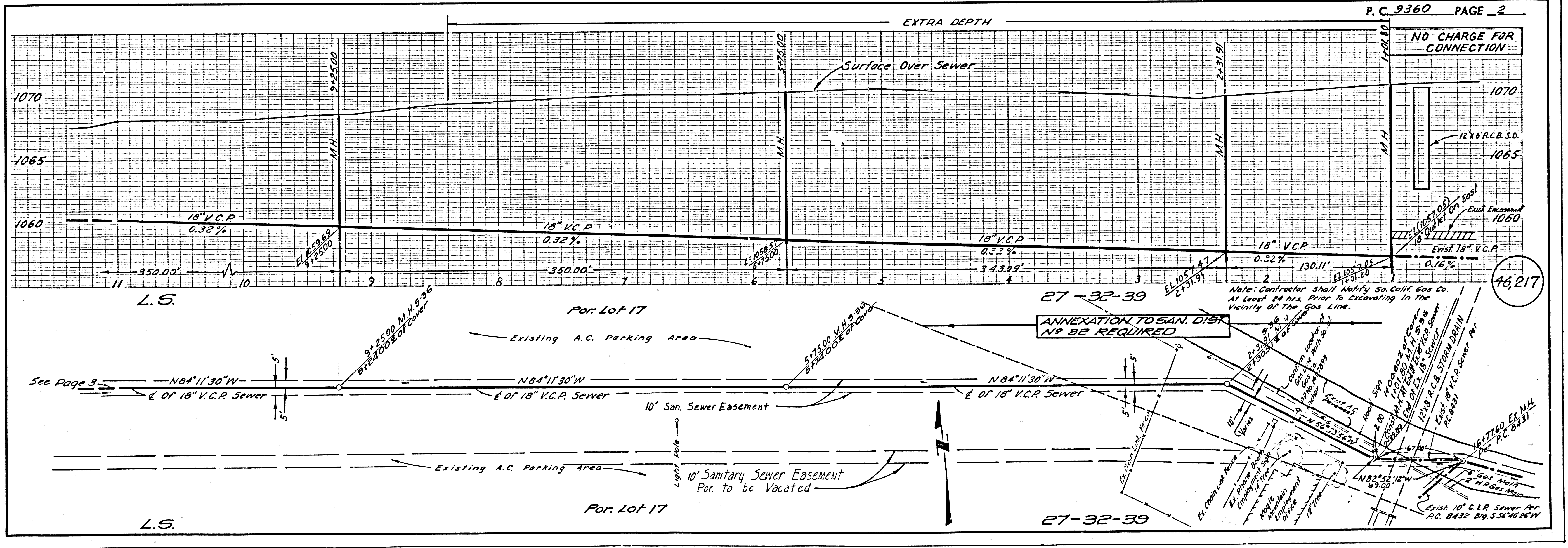
**CONSTRUCTION NOTES:**

- WORK SHALL BE CONSTRUCTED ACCORDING TO THE STANDARD SPECIFICATIONS FOR PUBLIC WORKS CONSTRUCTION 1976 EDITION AND COUNTY ENGINEER SPECIAL PROVISIONS FOR THE CONSTRUCTION OF SANITARY SEWERS DATED SEPT. 21, 1976. THIS SHALL BE PROSECUTED ONLY IN THE RESIDENCE OF THE COUNTY ENGINEER.
- THE CONTRACTOR SHALL NOTIFY THE DESIGN DIVISION BY TELEPHONE, 213-974-7203, AT LEAST TWENTY-FOUR HOURS BEFORE STARTING ANY WORK UNDER THIS CONTRACT.
- WYE OR TEE BRANCHES MAY BE USED FOR CONNECTIONS TO MAINLINE SEWERS EXCEPT AS NOTED.
- ALL STRUCTURES SHALL BE EITHER BRICK MANHOLES PER S-2 OR PRECAST CONCRETE MANHOLES PER S-36, EXCEPT AS NOTED.
- PROVIDE STAKES ON THE PROPERTY LINE OR PROPERTY LINES PRODUCED AT RIGHT ANGLES TO THE SEWER LINE AT THE CENTER LINE OF EACH MANHOLE.
- MANHOLE TOPS IN UNIMPROVED RIGHTS OF WAY TO BE LEVEL WITH FINISHED GRADE.
- VITRIFIED CLAY PIPE JOINTS SHALL BE TYPE "D", "F", OR "G" PER STANDARD SPECIFICATIONS SECTION 306-2.
- IF A POWER POLE IS WITHIN THREE FEET OF THE SEWER, THE SEWER SHALL BE ENCASED, PER S-23, CASE II, TWO FEET ON EACH SIDE FROM THE POINT OF INTERFERENCE.
- IF DURING THE COURSE OF CONSTRUCTION IT IS DETERMINED THAT THERE IS LESS THAN FOUR FEET OF COVER OVER THE TOP OF A MAIN LINE OR HOUSE LATERAL V.C.P. SEWER WHICH IS NOT INDICATED ON THE PLANS, THE PIPE SHALL BE ENCASED PER S-23, CASE II UNLESS OTHERWISE APPROVED BY THE COUNTY ENGINEER.
- ALL JOINTS BETWEEN CAST IRON PIPE AND VITRIFIED CLAY PIPE SHALL BE MADE WITH A RUBBER SLEEVE JOINT, TYPE "C" OR "D", WITH BUSHING IF NECESSARY PER STANDARD SPECIFICATIONS, SECTION 306-2.
- SEWERS TO BE TESTED FOR LEAKAGE PER SECTION 306-1.4 OF THE STANDARD SPECIFICATIONS AND SPECIAL PROVISIONS.
- RESURFACE ALL TRENCHES WITHIN PAVED AREAS TO MEET L.A. COUNTY ROAD DEPT., OR CALIFORNIA STATE HIGHWAY REQUIREMENTS IN ACCORDANCE WITH PERMITS.
- FULL COMPLIANCE WITH SECTION 306-1.3.6 OF THE SPECIAL PROVISIONS WILL BE REQUIRED FOR BACKFILL IN STREETS. CERTIFICATION OF BACKFILL COMPACTION AND SAND EQUIVALENTS BY A QUALIFIED, REGISTERED TESTING LABORATORY SHALL BE PROVIDED BY THE PERMITTEE PRIOR TO THE ISSUANCE OF A CERTIFICATE OF PARTIAL ACCEPTANCE.

THE FOLLOWING LATEST REVISED STANDARD PLANS ON FILE IN THE OFFICE OF THE COUNTY ENGINEER SHALL APPLY IN THE CONSTRUCTION OF THIS PROJECT.

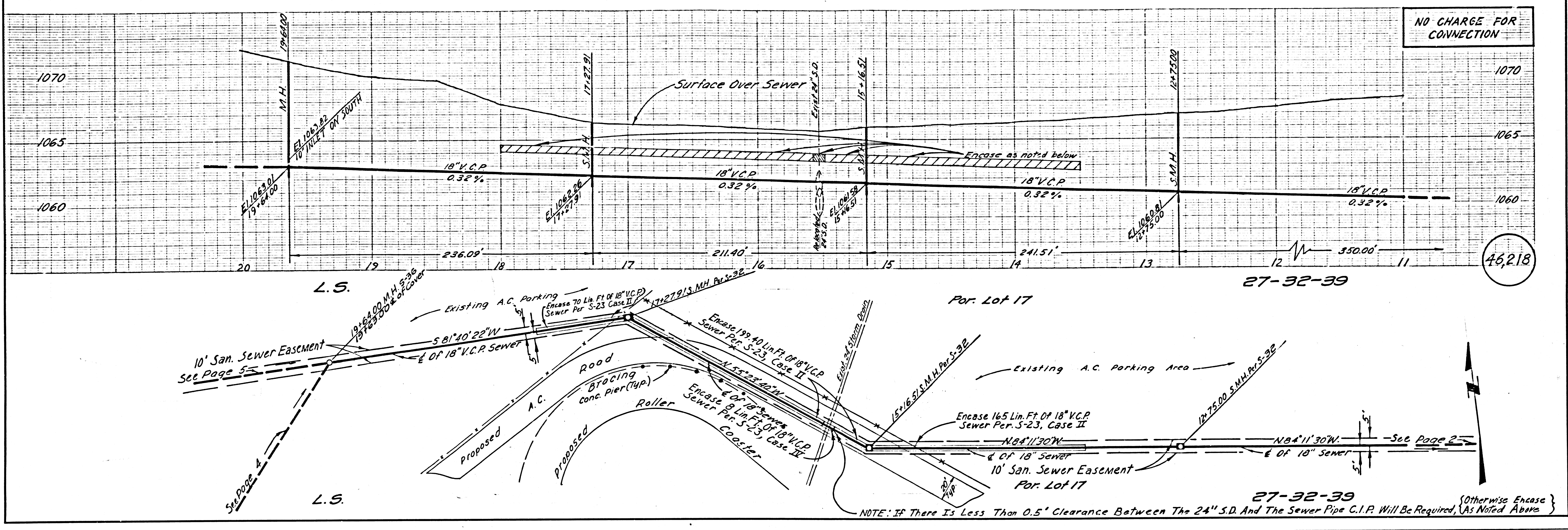
LEGEND	NO.
MINIMUM PUBLIC SAFETY REQUIREMENTS	S-1
BRICK MANHOLE	S-2
STANDARD MANHOLE STEP	S-7
FEEDING FOR SEWER PIPE	S-27
CRADLING AND ENCASEMENT	S-23
WYE OR TEE SUPPORT	S-36
ALLOWABLE TRENCH WIDTHS	S-28
LOCKING MANHOLE FRAME AND COVER	S-35
NON-REINFORCED PRECAST CONCRETE MANHOLE	S-36
RECTANGULAR SHALLOW MANHOLE	S-7
RECTANGULAR MANHOLE FRAME & COVERS	S-16
PRECAST CONCRETE SHALLOW MANHOLE	S-32

COUNTY OF LOS ANGELES, CALIFORNIA  
 DEPARTMENT OF COUNTY ENGINEER JOHN D. PARKHURST, CHIEF ENGINEER  
 CO. SAN DIST. NO. 32  
 APPROVED [Signature] 7/28/77 APPROVED [Signature] 8/3/77  
 REGIONAL ENGINEER (DATED) OFFICE ENGINEER  
 CHECKED [Signature] 7/25/77  
 REG. C. E. NO. 16742 (DATED)  
 SANTA CLARITA VALLEY BLDG. DIST. 82 J.N. 0358.01



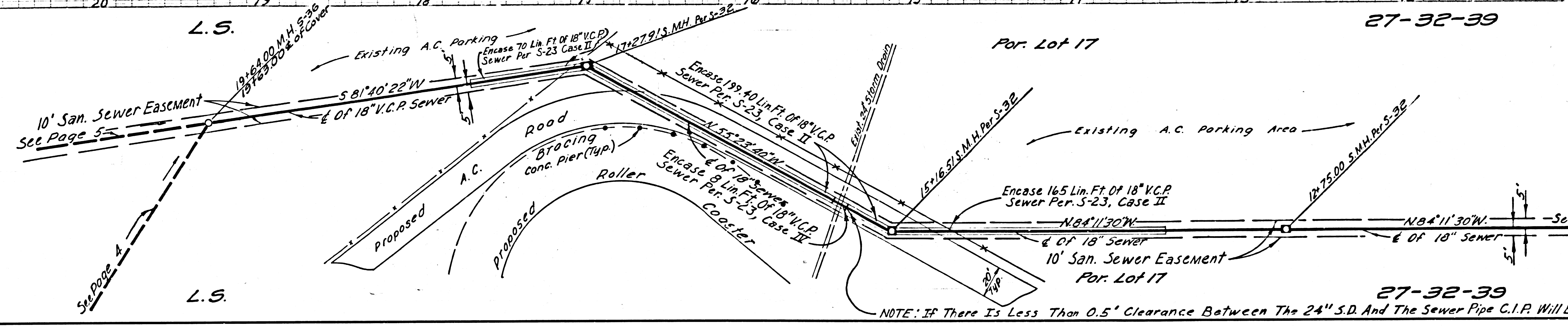


NO CHARGE FOR CONNECTION



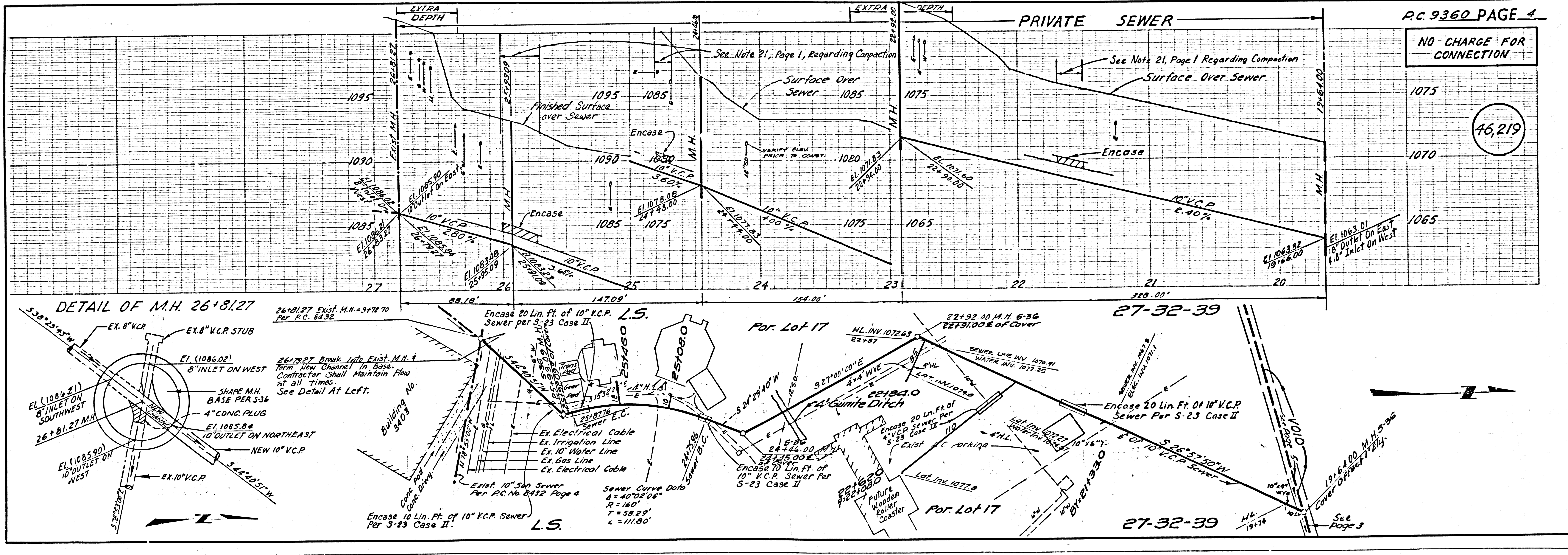
46,218

27-32-39



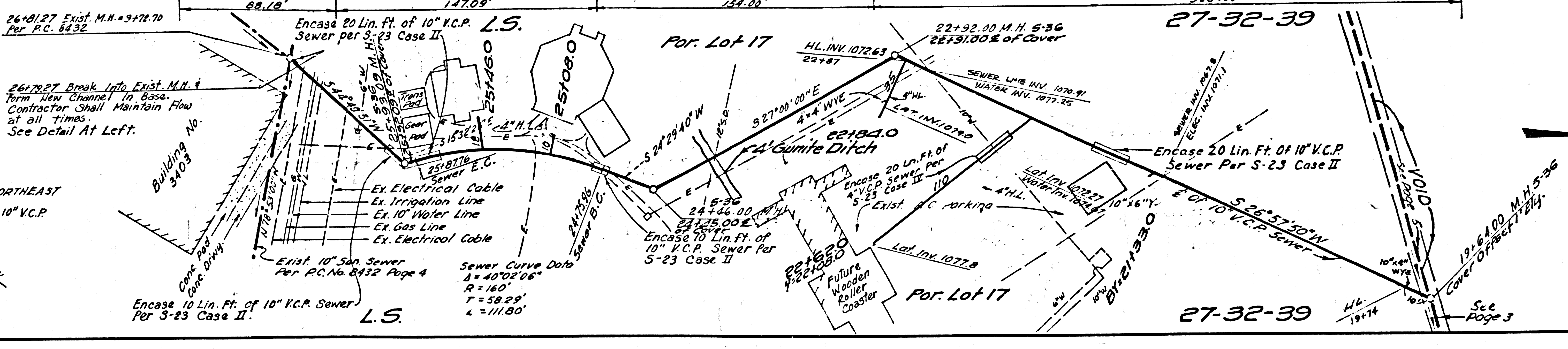
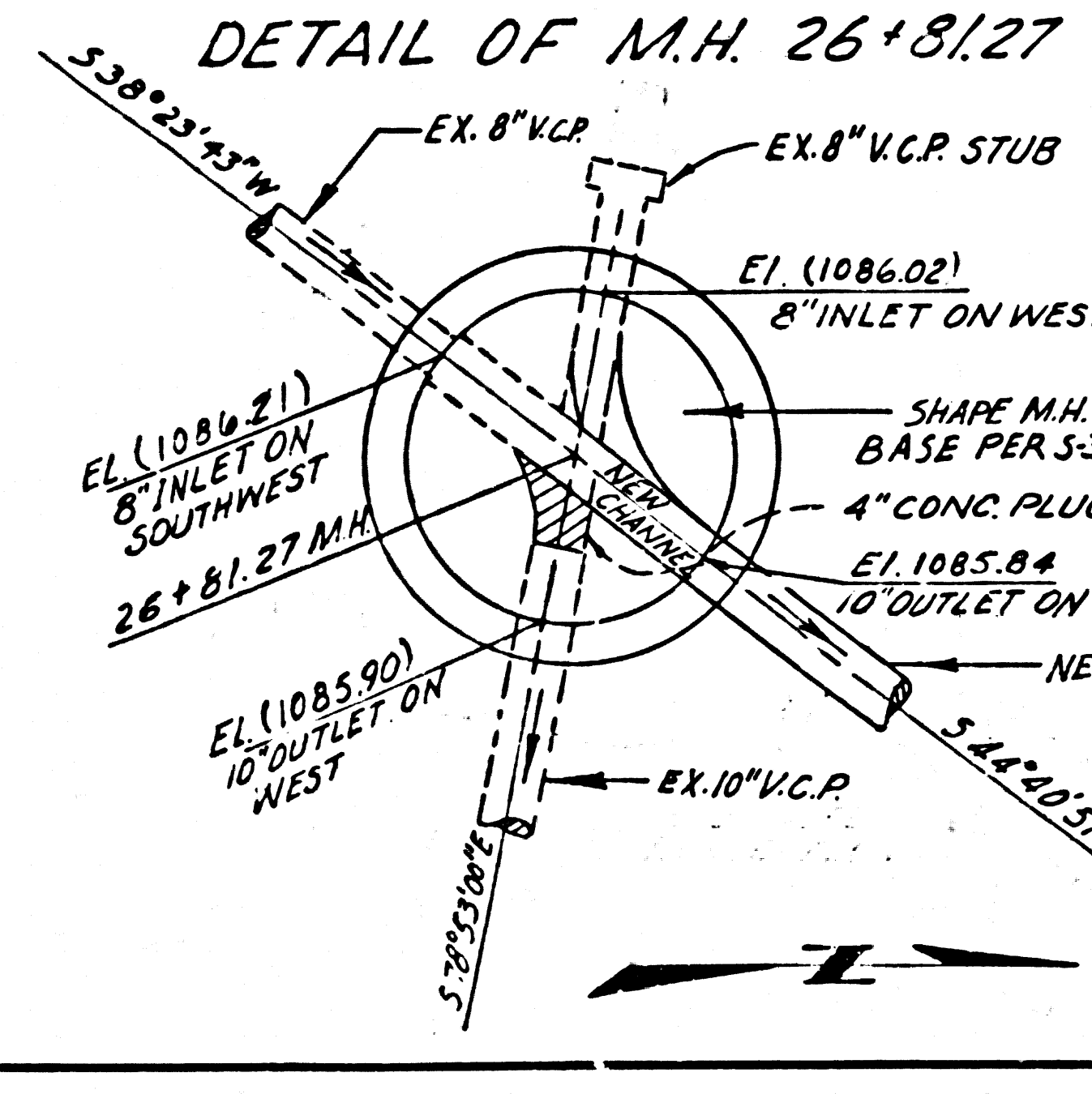
27-32-39

NO CHARGE FOR CONNECTION



46,219

27-32-39



27-32-39