

TO BE CONSTRUCTED IN

THOUSAND OAKS BLVD

PRIVATE CONTRACT NO. 9364

W.S. 90, A-1

2 SHEETS, 3 PAGES

SCALE: VERT. 1" = 8'  
HORIZ. 1" = 40' 1977

PREPARED IN THE OFFICES OF

SOUTH BAY ENGINEERING CORPORATION  
304 TEJON PLACE  
PALOS VERDES ESTATES, CALIF.  
BY: *Ronald E. Miller*  
REG. C. E. No. 10655

46092

THE FOLLOWING LATEST REVISED STANDARD PLANS ON FILE IN THE OFFICE OF THE COUNTY ENGINEER SHALL APPLY IN THE CONSTRUCTION OF THIS PROJECT.

LEGEND	5-1
MINIMUM PUBLIC SAFETY REQUIREMENTS	5-2
BRICK MANHOLE	5-3
STANDARD MANHOLE STEP	5-17
BEDDING FOR SEWER PIPE	5-21
CRACKING AND ENCASEMENT	5-23
WYE OR TEE SUPPORT	5-26
ALLOWABLE TRENCH WIDTHS	5-33
LOCKING MANHOLE FRAME AND COVER	5-33
NON-REINFORCED PRECAST CONCRETE MANHOLE	5-36

COUNTY OF LOS ANGELES, CALIFORNIA

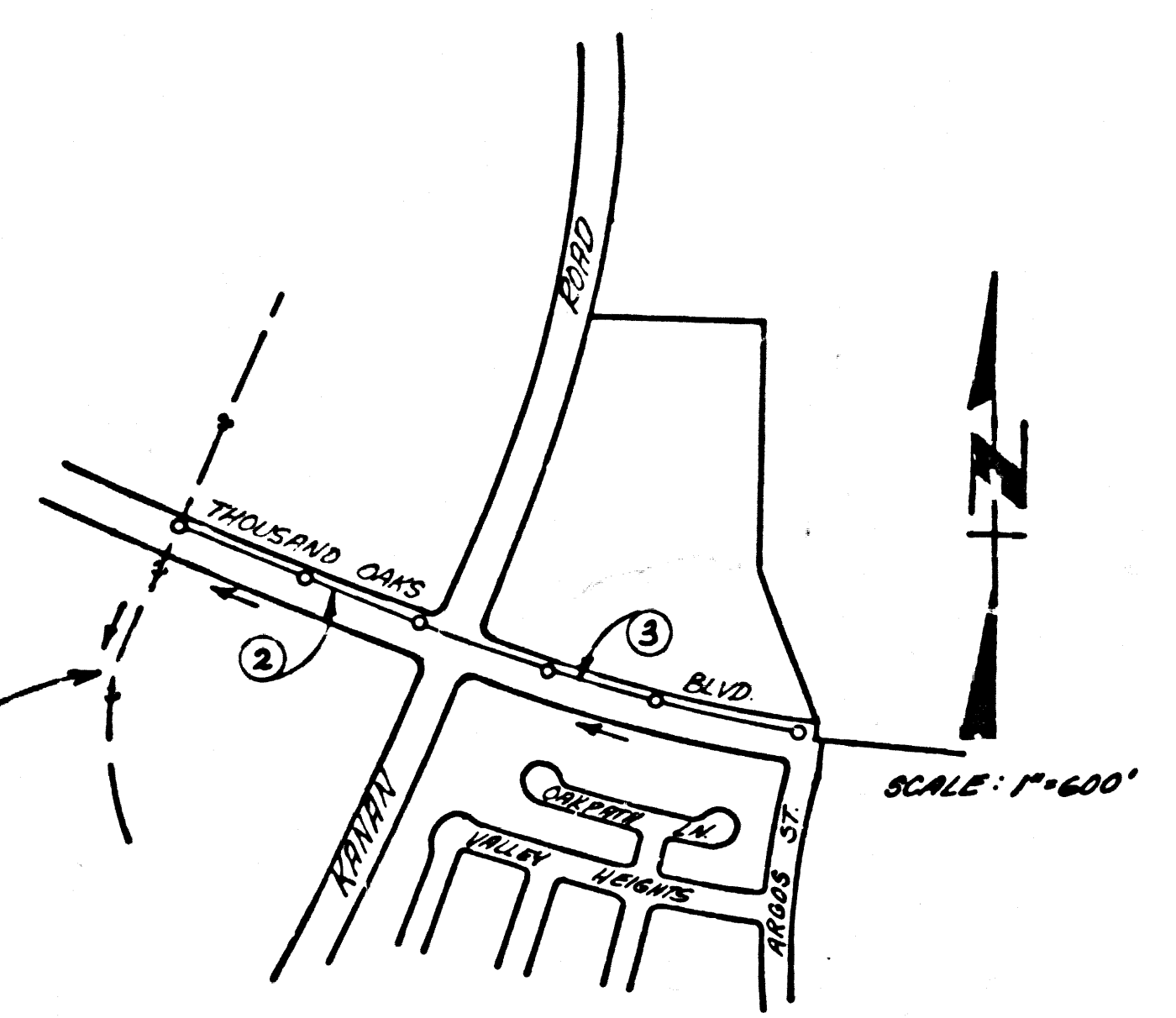
STEPHEN J. KOONCE (ACTIVE) COUNTY ENGINEER LAS VIRGENES MUNICIPAL WATER DISTRICTS

APPROVED: *Handwritten Signature* DATE: 7/12/77  
REGIONAL ENGINEER REG. C. E. NO. 17722  
CHECKED: *Handwritten Signature* DATE: 7/12/77  
GENERAL MANAGER & DATE CHIEF ENGINEER

CALABASAS BLDG. DIST. 9.1 I.N. 0323.01

DOUBLE SCALE

B.M. BY 9004 ELEV. 882.375  
RDBM TAG IN SOUTH CURB 5' E. OF S.C.P.  
AT S.E. COR. OF KAMAN ROAD & THOUSAND  
OAKS BLVD. 40' S. 75' E. OF E  
INTERSECTION.  
MALIBU QUAD. 19 7E



INDEX MAP  
P.C. 9364

NOTE:  
NUMBERS IN CIRCLES INDICATE PAGE NUMBERS.

REVISION No 1 DATE 10/17/77  
ADDED 8" LATERAL NORTHERLY FROM M.H.  
AT STA. 10+30.50, PAGE 3.  
ADDED 6" LATERAL NORTHERLY FROM  
8"x6" WYE AT STA. 15+42, PAGE 3  
APPROVED: *Handwritten Signature* 17722 10/17/77  
OFFICE OF COUNTY ENGINEER R.E. NO. DATE

GENERAL NOTES:

- ELEVATIONS ARE IN FEET ABOVE U.S.C. & G.S. SEA LEVEL DATUM OF 1929.
- NO REVISIONS SHALL BE MADE IN THESE PLANS WITHOUT THE APPROVAL OF THE COUNTY ENGINEER.
- NO REPRESENTATIVE OF THE COUNTY ENGINEER WILL SURVEY OR LAY OUT ANY PORTION OF THE WORK.
- GRADES TO WHICH THIS IMPROVEMENT IS TO BE CONSTRUCTED ARE SHOWN ON PLANS AND PROFILES. GRADE POINTS FOR TOP OF CURBS, CENTER LINE OF STREETS, OR CENTER LINE OF ALLEYS ARE SHOWN BY CIRCLES ON PROFILES. AT ALL POINTS BETWEEN DESIGNATED POINTS THE GRADE SHALL BE ESTABLISHED SO AS TO CONFORM TO A STRAIGHT LINE DRAWN BETWEEN SAID DESIGNATED POINTS.
- THE PRIVATE ENGINEER SHALL FURNISH THE COUNTY ENGINEER WITH GRADE SHEETS AND STATIONING FOR ALL HOUSE LATERALS AND "T" OR "Y" BRANCHES AND SHALL PROVIDE STAKES FOR THEM AT THEIR PROPER LOCATIONS WITH STATIONING PLAINLY MARKED. ALL HOUSE LATERALS SHALL BE CONSTRUCTED IN A STRAIGHT ALIGNMENT AT RIGHT ANGLES FROM THE MAIN LINE SEWER EXCEPT AS SHOWN ON THE PLANS. HOUSE LATERALS FROM COUNTRIES SHALL NOT HAVE AN ANGLE OF LESS THAN 45° WITH THE MAIN LINE SEWER. ANY CHANGE IN ALIGNMENT SHALL BE REQUESTED IN WRITING BY THE PRIVATE ENGINEER.
- THE PRIVATE ENGINEER SHALL FURNISH THE HOUSE LATERAL DEPTH AT THE PROPERTY LINE BELOW THE TOP OF CURB ELEVATION FOR EACH HOUSE LATERAL ON THE GRADE SHEET.
- BEFORE WORK CAN BE STARTED, THE CONTRACTOR MUST OBTAIN A PERMIT TO EXCAVATE IN COUNTY STREETS FROM THE L.A. COUNTY ROAD DEPT., DISTRICT OFFICE NO. 9, AND PAY A FEE TO THE COUNTY ENGINEER AT THE MALIBU REGIONAL OFFICE, TO COVER THE COST OF CONSTRUCTION INSPECTION AND RECORD PLANS.
- IF WORK IS TO BE DONE IN A STATE HIGHWAY, A PERMIT MUST BE OBTAINED FROM THE STATE OF CALIFORNIA, DIVISION OF HIGHWAYS, 120 SOUTH SPRING STREET, LOS ANGELES, CALIFORNIA.
- APPROVAL OF THIS PLAN BY THE COUNTY OF LOS ANGELES DOES NOT CONSTITUTE A REPRESENTATION AS TO THE ACCURACY OF THE LOCATION OF OR THE EXISTENCE OR NON-EXISTENCE OF ANY UNDERGROUND UTILITY PIPE, OR STRUCTURE WITHIN THE LIMITS OF THIS PROJECT. THIS NOTE APPLIES TO ALL PAGES.
- REFER TO SECTION 7-10.4J OF THE STANDARD SPECIFICATIONS, REGARDING SAFETY MEASURES.
- BEFORE THE COMMENCEMENT OF THE PROPOSED SEWER CONSTRUCTION PERMIT BY THE COUNTY ENGINEER, THE CONTRACTOR SHALL OBTAIN A PERMIT TO EXCAVATE FROM THE STATE OF CALIFORNIA, DIVISION OF INDUSTRIAL SAFETY.
- THE UNDERGROUND UTILITY COMPANIES WITHIN THE PROJECT ARE:
  - GENERAL TELEPHONE CO. 557-3257
  - SOUTHERN CALIF. GAS CO. 893-3180
  - SOUTHERN CALIF. Edison CO. 933-1800
  - LAS VIRGENES MUNICIPAL WATER DISTRICT 930-4110

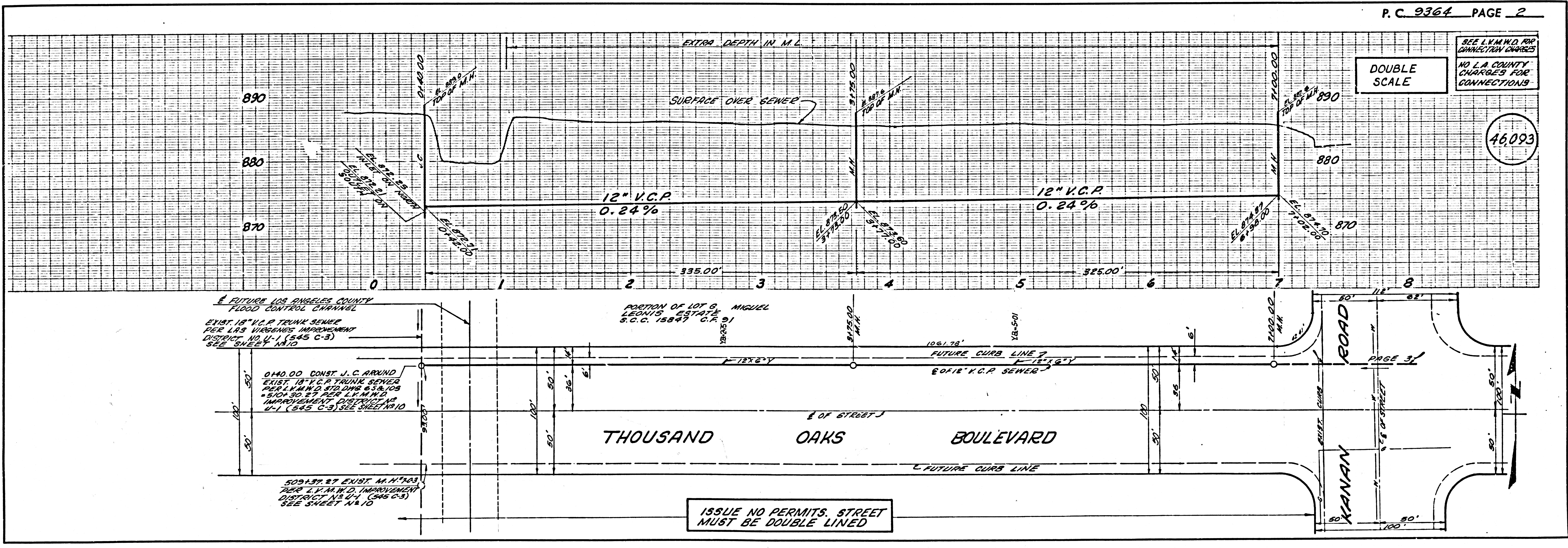
CONSTRUCTION NOTES:

- WORK SHALL BE CONSTRUCTED ACCORDING TO THE STANDARD SPECIFICATIONS FOR PUBLIC WORKS CONSTRUCTION (1976 EDITION) AND COUNTY ENGINEER SPECIAL PROVISIONS FOR THE CONSTRUCTION OF SANITARY SEWERS DATED SEP. 21, 1976 AND SHALL BE PROSECUTED ONLY IN THE PRESENCE OF THE COUNTY ENGINEER.
- THE CONTRACTOR SHALL NOTIFY THE DESIGN DIVISION BY TELEPHONE (213) 574-7883, AT LEAST TWENTY-FOUR HOURS BEFORE STARTING ANY WORK UNDER THIS CONTRACT.
- HOUSE LATERALS TO BE CONSTRUCTED WITH INVERTS AT PROPERTY LINE & FEET BELOW CURB GRADE EXCEPT AS NOTED.
- WYE OR TEE BRANCHES MAY BE USED FOR CONNECTIONS TO MAINLINE SEWERS EXCEPT AS NOTED.
- ALL STRUCTURES SHALL BE EITHER BRICK MANHOLES PER 5-3 OR PRECAST CONCRETE MANHOLES PER 5-36, EXCEPT AS NOTED.
- PROVIDE STAKES ON THE PROPERTY LINE OR PROPERTY LINES PRODUCED AT RIGHT ANGLES TO THE SEWER LINE AT THE CENTER LINE OF EACH MANHOLE.
- MANHOLE TOPS IN UNIMPROVED RIGHTS OF WAY TO BE SIX INCHES ABOVE FINISHED GRADE.
- VITRIFIED CLAY PIPE JOINTS SHALL BE TYPE "BT", "T", OR "D" PER STANDARD SPECIFICATIONS SECTION 700-2.
- IF A POWER POLE IS WITHIN THREE FEET OF THE SEWER, THE SEWER SHALL BE ENCASED, PER 5-23, CASE II, TWO FEET ON EACH SIDE FROM THE POINT OF INTERFERENCE.
- IF DURING THE COURSE OF CONSTRUCTION IT IS DETERMINED THAT THERE IS LESS THAN FOUR FEET OF COVER OVER THE TOP OF A MAIN LINE OR HOUSE LATERAL V.C.P. SEWER WHICH IS NOT INDICATED ON THE PLANS, THE PIPE SHALL BE ENCASED PER 5-23, CASE II UNLESS OTHERWISE APPROVED BY THE COUNTY ENGINEER.
- ALL JOINTS BETWEEN CAST IRON PIPE AND VITRIFIED CLAY PIPE SHALL BE MADE WITH A RUBBER SLEEVE JOINT, TYPE "C" OR "D", (WITH BUSHING IF NECESSARY) PER STANDARD SPECIFICATIONS, SECTION 308-2.
- SEWERS TO BE NEW AND TO BE TESTED FOR LEAKAGE PER SECTION 306-1.4. IF THE STANDARD SPECIFICATIONS AND REQUIREMENTS ALL TRENCHES WITHIN PAVED AREAS TO MEET L.A. COUNTY ROAD DEPT. OR CALIFORNIA STATE HIGHWAY REQUIREMENTS IN ACCORDANCE WITH PERMITS.
- FULL COMPLIANCE WITH SECTION 306-1.8 OF THE SPECIAL PROVISIONS WILL BE REQUIRED FOR BACKFILL IN STREETS. CERTIFICATION OF BACKFILL COMPACTION AND SAND EQUIVALENTS BY A QUALIFIED, REGISTERED TESTING LABORATORY SHALL BE PROVIDED BY THE PERMITTEE PRIOR TO THE ISSUANCE OF A CERTIFICATE OF PARTIAL ACCEPTANCE.

DOUBLE SCALE

SEE L.A.M.W.D. FOR CONNECTION CHARGES  
NO L.A. COUNTY CHARGES FOR CONNECTIONS

46093



ISSUE NO PERMITS. STREET  
MUST BE DOUBLE LINED



SEE L.V.M.W.D. FOR PERMIT & CHARGES  
NO L.A. COUNTY CHARGES FOR CONNECTIONS

46.094

DOUBLE SCALE

