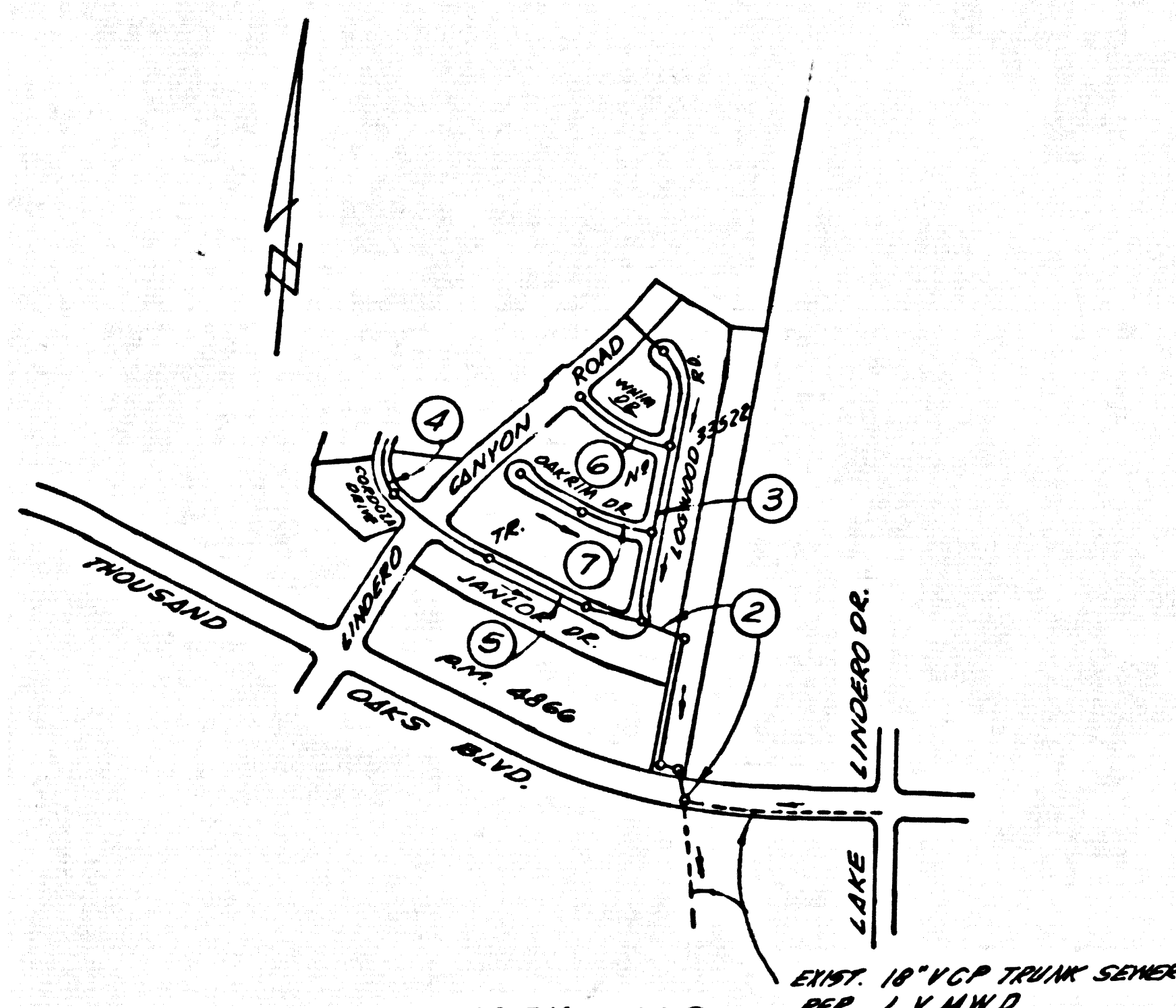


B.M. BY 9189 ELEV. 1013.571  
 LEAD AND BRASS NAIL, WEST CURB  
 LINDERO CANYON RD. 1 FT. SOUTH OF  
 S.C.P. 80 FT. SOUTH OF WE 5' OF CENTER  
 LINE INTERSECTION THOUSAND OAKS BLVD.  
 MALIBU QUAD. 19 72



INDEX MAP  
 SCALE 1"=400'  
 P.C. 9367

NOTE: NUMBERS IN CIRCLES  
 INDICATE PAGE NUMBER

REVISION NO. 1 (Date) 8-18-77  
 PAGE 6 - DELETE 8" V.C.P. STA. 3+36.01 TO 4+46.70  
 IN WAIN DRIVE  
 PAGE 3&7 - ADD 8" V.C.P. STA 16+40.69 LOGWOOD ROAD TO  
 STA 18+01.69 TRACT BOUNDARY  
 APPROVED: [Signature] 8/28/77  
 Office of County Engineer / R.E. No. 17722

DOUBLE SCALE

PROFILE, ALIGNMENT AND GRADE OF  
 SANITARY SEWERS PAGE 1

TO BE CONSTRUCTED IN  
 TRACT NO. 33522

PRIVATE CONTRACT NO. 9367

W.S. 93, C-1

4 SHEETS, 7 PAGES

46161

SCALE: VERT. 1"=4'  
 HORIZ. 1"=40'  
 JULY, 1977  
 PREPARED IN THE OFFICES OF  
 MCCUTCHAN AND ASSOCIATES, INC.  
 2100 E. FOOTHILL BLVD., PASADENA, CALIF.  
 BY: [Signature]  
 REG. C. E. No. 9890

GENERAL NOTES:

- ELEVATIONS ARE IN FEET ABOVE U.S.C. & G.S. SEA LEVEL DATUM OF 1929.
- NO REVISIONS SHALL BE MADE IN THESE PLANS WITHOUT THE APPROVAL OF THE COUNTY ENGINEER.
- NO REPRESENTATIVE OF THE COUNTY ENGINEER WILL SURVEY OR LAY OUT ANY PORTION OF THE WORK.
- GRADES TO WHICH THIS IMPROVEMENT IS TO BE CONSTRUCTED ARE SHOWN ON PLANS AND PROFILES. GRADE POINTS FOR TOP OF CURBS, CENTER LINE OF STREETS, OR CENTER LINE OF ALLEYS ARE SHOWN BY CIRCLES ON PROFILES. AT ALL POINTS BETWEEN DESIGNATED POINTS THE GRADE SHALL BE ESTABLISHED SO AS TO CONFORM TO A STRAIGHT LINE DRAWN BETWEEN SAID DESIGNATED POINTS.
- THE PRIVATE ENGINEER SHALL FURNISH THE HOUSE LATERAL WITH STATIONING FOR ALL HOUSE LATERALS AND "1" OR "1" BRANCHES AND SHALL PROVIDE STAKES FOR THEM AT THEIR PROPER LOCATIONS WITH STATIONING PLAINLY MARKED. ALL HOUSE LATERALS SHALL BE CONSTRUCTED IN A STRAIGHT ALIGNMENT AT RIGHT ANGLES FROM THE MAIN LINE SEWER EXCEPT AS SHOWN ON THE PLANS. HOUSE LATERALS FROM CHIMNEYS SHALL NOT HAVE AN ANGLE OF LESS THAN 45° WITH THE MAIN LINE SEWER. ANY CHANGE IN ALIGNMENT SHALL BE REQUESTED IN WRITING BY THE PRIVATE ENGINEER.
- THE PRIVATE ENGINEER SHALL FURNISH THE HOUSE LATERAL DEPTH AT THE PROPERTY LINE BELOW THE TOP OF CURB ELEVATION FOR EACH HOUSE LATERAL ON THE GRADE SHEET.
- BEFORE WORK CAN BE STARTED, THE CONTRACTOR MUST OBTAIN A PERMIT TO EXCAVATE IN COUNTY STREETS FROM THE L.A. COUNTY ROAD DEPT., DISTRICT OFFICE NO. 3 AND PAY A FEE TO THE COUNTY ENGINEER, AT THE MALIBU REGIONAL OFFICE, TO COVER THE COST OF CONSTRUCTION INSPECTION AND RECORD PLANS.
- IF WORK IS TO BE DONE IN A STATE HIGHWAY, A PERMIT MUST BE OBTAINED FROM THE STATE OF CALIFORNIA, DIVISION OF HIGHWAYS, 130 SOUTH SPRING STREET, LOS ANGELES, CALIFORNIA.
- APPROVAL OF THIS PLAN BY THE COUNTY OF LOS ANGELES DOES NOT CONSTITUTE A REPRESENTATION AS TO THE ACCURACY OF THE LOCATION OF OR THE EXISTENCE OR NON-EXISTENCE OF ANY UNDERGROUND UTILITY PIPE, OR STRUCTURE WITHIN THE LIMITS OF THIS PROJECT. THIS NOTE APPLIES TO ALL PAGES.
- REFER TO SECTION 7-10.41 OF THE STANDARD SPECIFICATIONS, REGARDING SAFETY ORDERS.
- BEFORE THE ISSUANCE OF THE REQUIRED SEWER CONSTRUCTION PERMIT BY THE COUNTY ENGINEER, THE CONTRACTOR SHALL OBTAIN A PERMIT TO EXCAVATE FROM THE STATE OF CALIFORNIA, DIVISION OF INDUSTRIAL SAFETY.
- THE UNDERGROUND UTILITY COMPANIES WITHIN THE PROJECT ARE:
  - A. SOUTHERN CALIFORNIA Edison Co. 683-3036
  - B. SOUTHERN CALIFORNIA GAS Co. 683-6200
  - C. CALIF. P.W. 683-0200
  - D. PACIFIC TELEPHONE 386-0200
  - E. LAS VIRGENES MUN. WATER DIST. 680-4110

CONSTRUCTION NOTES:

- WORK SHALL BE CONSTRUCTED ACCORDING TO THE STANDARD SPECIFICATIONS FOR PUBLIC WORKS CONSTRUCTION (1976 EDITION) - WHICH ARE THE STANDARD SPECIFICATIONS FOR THE CONSTRUCTION OF SANITARY SEWERS DATED SEPT. 21, 1976 AND SHALL BE PROTECTED ONLY IN THE PRESENCE OF THE COUNTY ENGINEER.
- THE CONTRACTOR SHALL NOTIFY THE DESIGN DIVISION BY TELEPHONE (213) 974-7283 AT LEAST TWENTY-FOUR HOURS BEFORE STARTING ANY WORK UNDER THIS CONTRACT.
- HOUSE LATERALS TO BE CONSTRUCTED WITH INVERTS AT PROPERTY LINE 6 FEET BELOW CURB GRADE EXCEPT AS NOTED.
- WYE OR TEE BRANCHES MAY BE USED FOR CONNECTIONS TO MAINLINE SEWERS EXCEPT AS NOTED.
- ALL STRUCTURES SHALL BE EITHER BRICK MANHOLES PER S.3 OR PRECAST CONCRETE MANHOLES PER S.34, EXCEPT AS NOTED.
- PROVIDE STAKES ON THE PROPERTY LINE OR PROPERTY LINES PRODUCED AT RIGHT ANGLES TO THE SEWER LINE AT THE CENTER LINE OF EACH MANHOLE.
- MANHOLE TOPS IN UNIMPROVED RIGHTS OF WAY TO BE SIX INCHES ABOVE FINISHED GRADE.
- VITRIFIED CLAY PIPE JOINTS SHALL BE TYPE "D", "F", OR "G" PER STANDARD SPECIFICATIONS SECTION 308-2.
- IF A POWER POLE IS WITHIN THREE FEET OF THE SEWER, THE SEWER SHALL BE ENCASED, PER S-23, CASE II, TWO FEET ON EACH SIDE FROM THE POINT OF INTERFERENCE.
- IF DURING THE COURSE OF CONSTRUCTION IT IS DETERMINED THAT THERE IS LESS THAN FOUR FEET OF COVER OVER THE TOP OF A MAIN LINE OR HOUSE LATERAL V.C.P. SEWER WHICH IS NOT INDICATED ON THE PLANS, THE PIPE SHALL BE ENCASED PER S-21, CASE II UNLESS OTHERWISE APPROVED BY THE COUNTY ENGINEER.
- ALL JOINTS BETWEEN CAST IRON PIPE AND VITRIFIED CLAY PIPE SHALL BE MADE WITH A RUBBER SLEEVE JOINT, TYPE "C" OR "D", WITH BURNING IF NECESSARY PER STANDARD SPECIFICATIONS, SECTION 308-2.
- SEWERS TO BE TESTED FOR LEAKAGE PER SECTION 306-1.4 OF THE STANDARD SPECIFICATIONS AND SPECIAL PROVISIONS.
- RESURFACE ALL TRENCHES WITHIN PAVED AREAS TO MEET L.A. COUNTY ROAD DEPT. OR CALIFORNIA STATE HIGHWAY REQUIREMENTS IN ACCORDANCE WITH PERMITS.
- FULL COMPLIANCE WITH SECTION 306-1.8B OF THE SPECIAL PROVISIONS WILL BE REQUIRED FOR BACKFILL IN STREETS. CERTIFICATION OF BACKFILL COMPACTION AND SAND EQUIVALENTS BY A QUALIFIED, REGISTERED TESTING LABORATORY SHALL BE PROVIDED TO THE PERMITTEE PRIOR TO THE ISSUANCE OF A CERTIFICATE OF PARTIAL ACCEPTANCE.

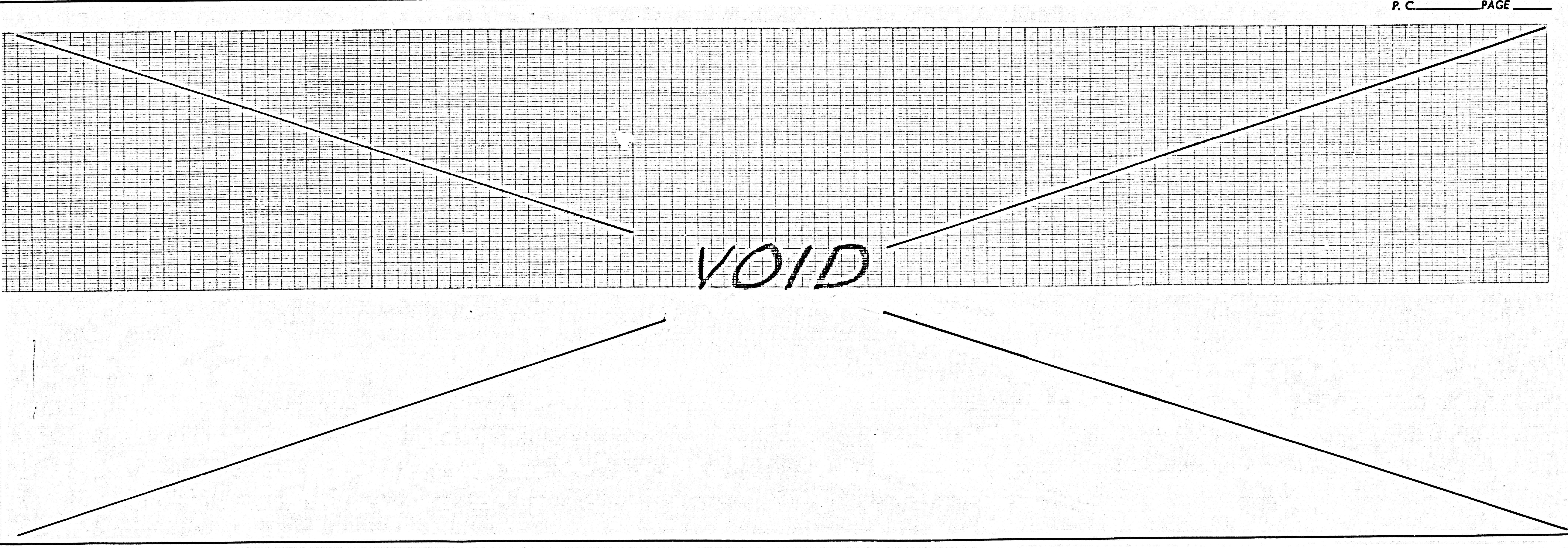
THE FOLLOWING LATEST REVISED STANDARD PLANS ON FILE IN THE OFFICE OF THE COUNTY ENGINEER SHALL APPLY IN THE CONSTRUCTION OF THIS PROJECT.

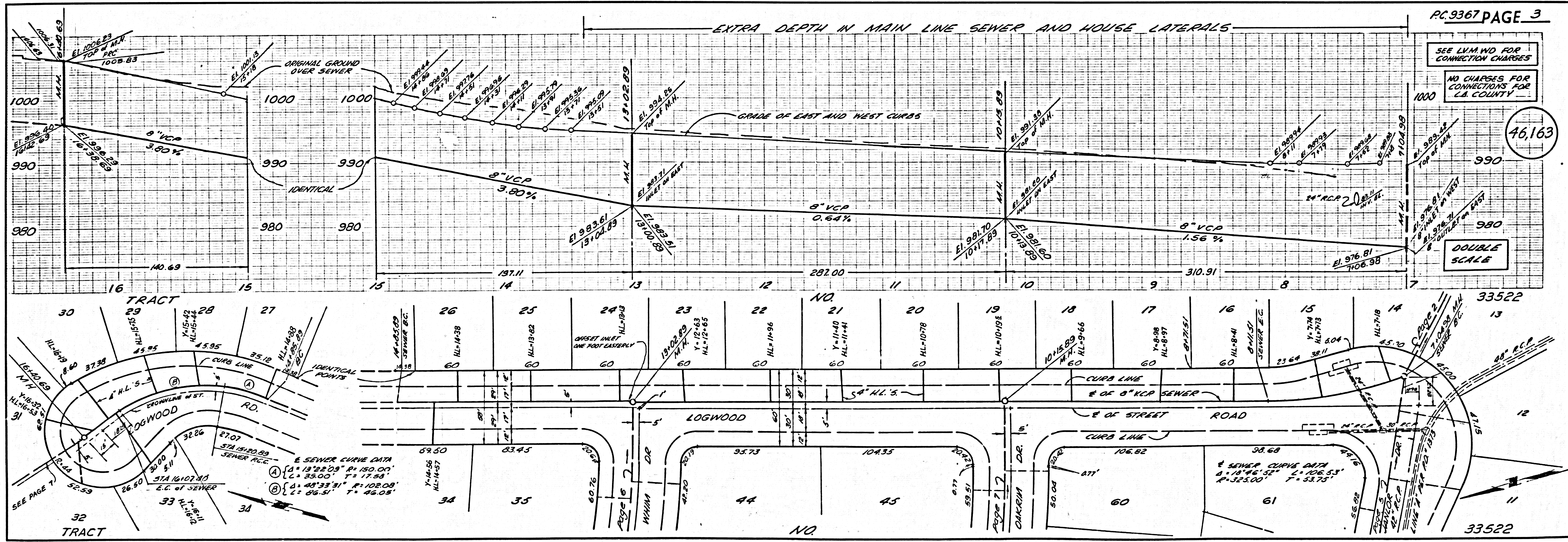
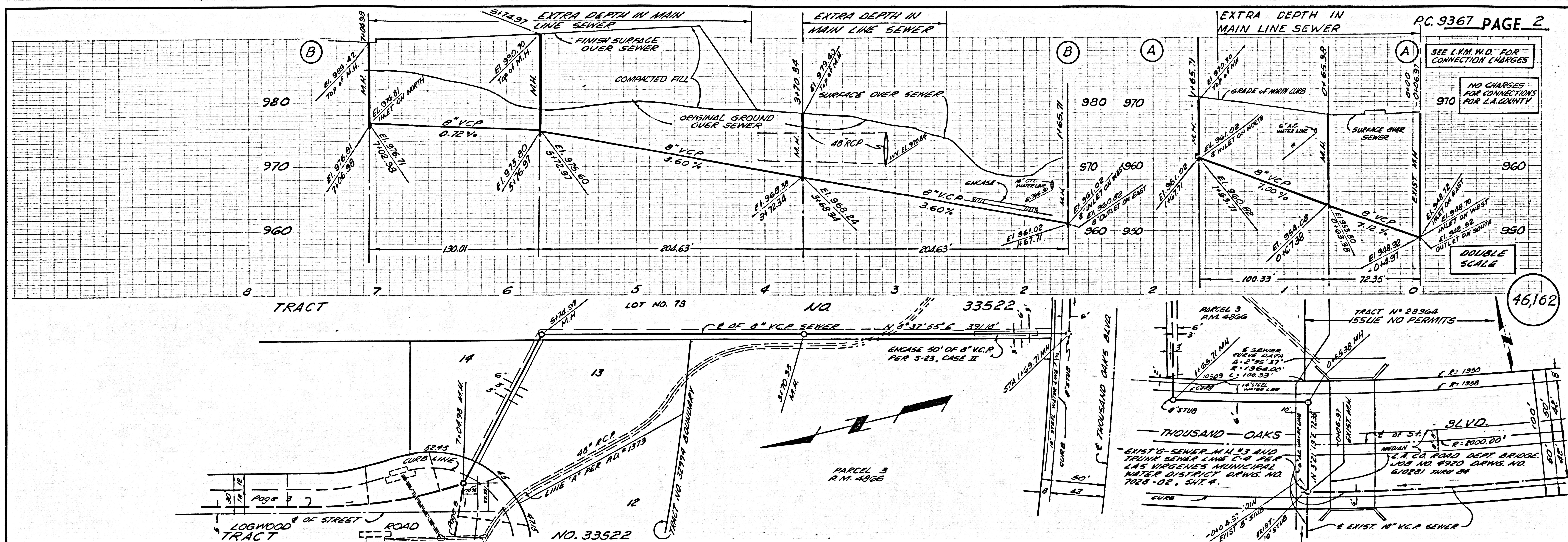
LEGEND	
MINIMUM PUBLIC SAFETY REQUIREMENTS	S-1
BRICK MANHOLE	S-2
STANDARD MANHOLE STEP	S-21
BEDDING FOR SEWER PIPE	S-21
CRADLING AND ENCASEMENT	S-23
WYE OR TEE SUPPORT	S-24
ALLOWABLE TRENCH WIDTHS	S-25
LOCKING MANHOLE FRAME AND COVER	S-26
NON-REINFORCED PRECAST CONCRETE MANHOLE	S-26
SPECIAL HOUSE LATERALS	S-28

COUNTY OF LOS ANGELES, CALIFORNIA  
 STEPHEN J. KOWING (ACTING) COUNTY ENGINEER  
 LAS VIRGENES MUNICIPAL WATER DISTRICT  
 APPROVED: [Signature] 8/13/77 REGIONAL ENGINEER  
 APPROVED: H.W. Stokes 8-5-77 GENERAL MANAGER  
 REG. C.E. No. 17722  
 CHECKED: [Signature] 8/28/77  
 DATE

CALABASAS BLDG. DIST. 91 J.N. 0253.02

P. C. PAGE

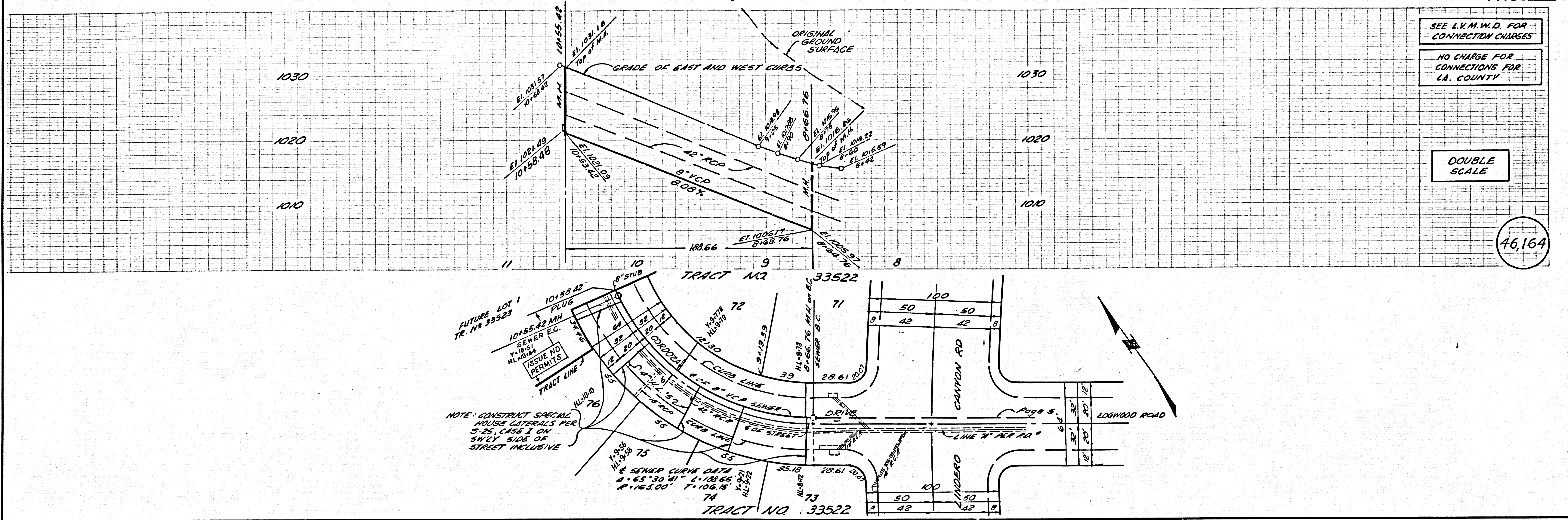




SEE L.V.M.W.D. FOR CONNECTION CHARGES  
NO CHARGE FOR CONNECTIONS FOR L.A. COUNTY

DOUBLE SCALE

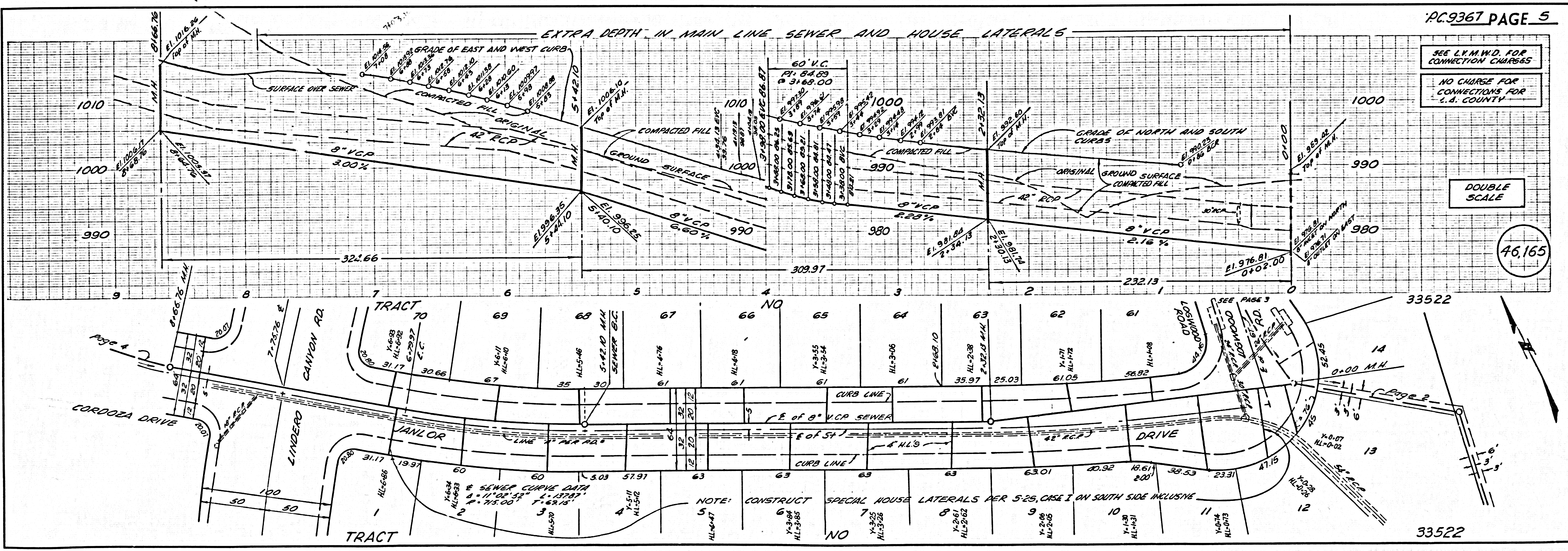
46,164



SEE L.V.M.W.D. FOR CONNECTION CHARGES  
NO CHARGE FOR CONNECTIONS FOR L.A. COUNTY

DOUBLE SCALE

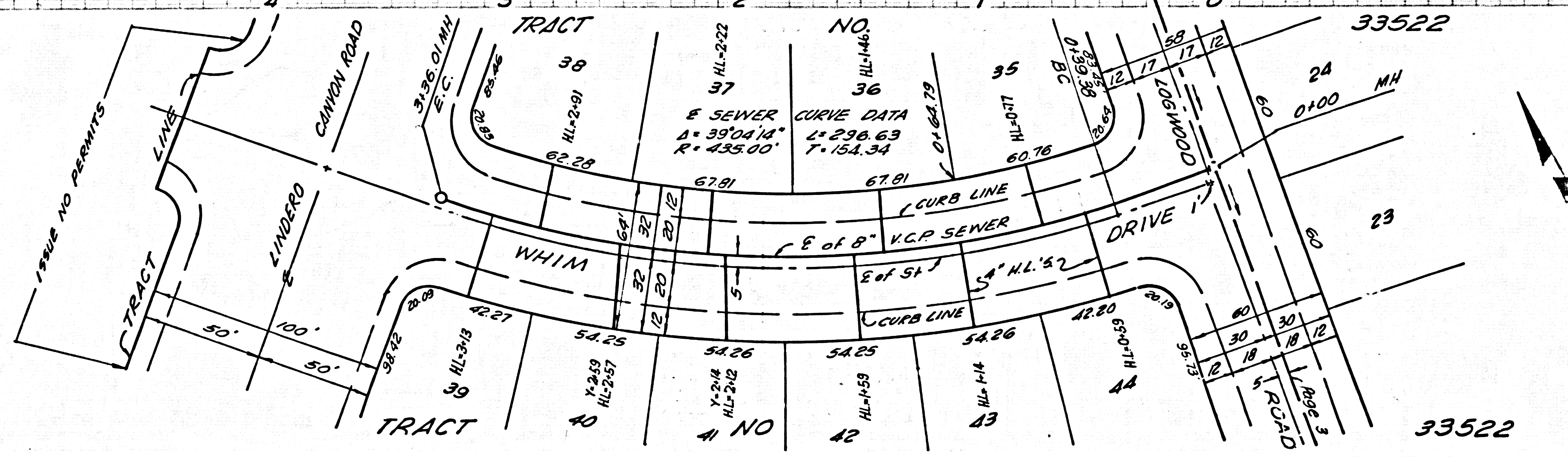
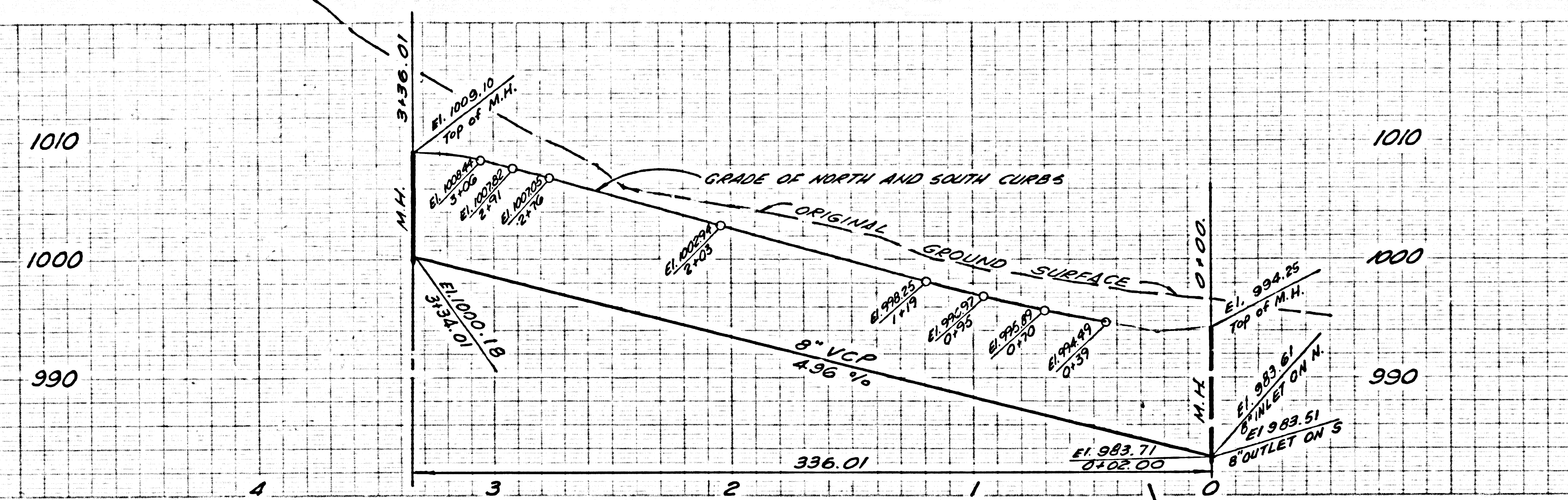
46,165



SEE L.V.M.H.D. FOR CONNECTION CHARGES  
NO CHARGE FOR CONNECTIONS FOR L.A. COUNTY

DOUBLE SCALE

46,166



SEE L.V.M.H.D. FOR CONNECTION CHARGES  
NO CHARGE FOR CONNECTIONS FOR L.A. COUNTY

DOUBLE SCALE

46,167

