

SANITARY SEWERS

TO BE CONSTRUCTED IN

TRACT NO. 33254  
PRIVATE CONTRACT NO. 9374

W.S. 93, C & D-2

4 SHEETS, 8 PAGES

SCALE: VERT. 1"=4'  
HORIZ. 1"=40'

JUNE, 1977

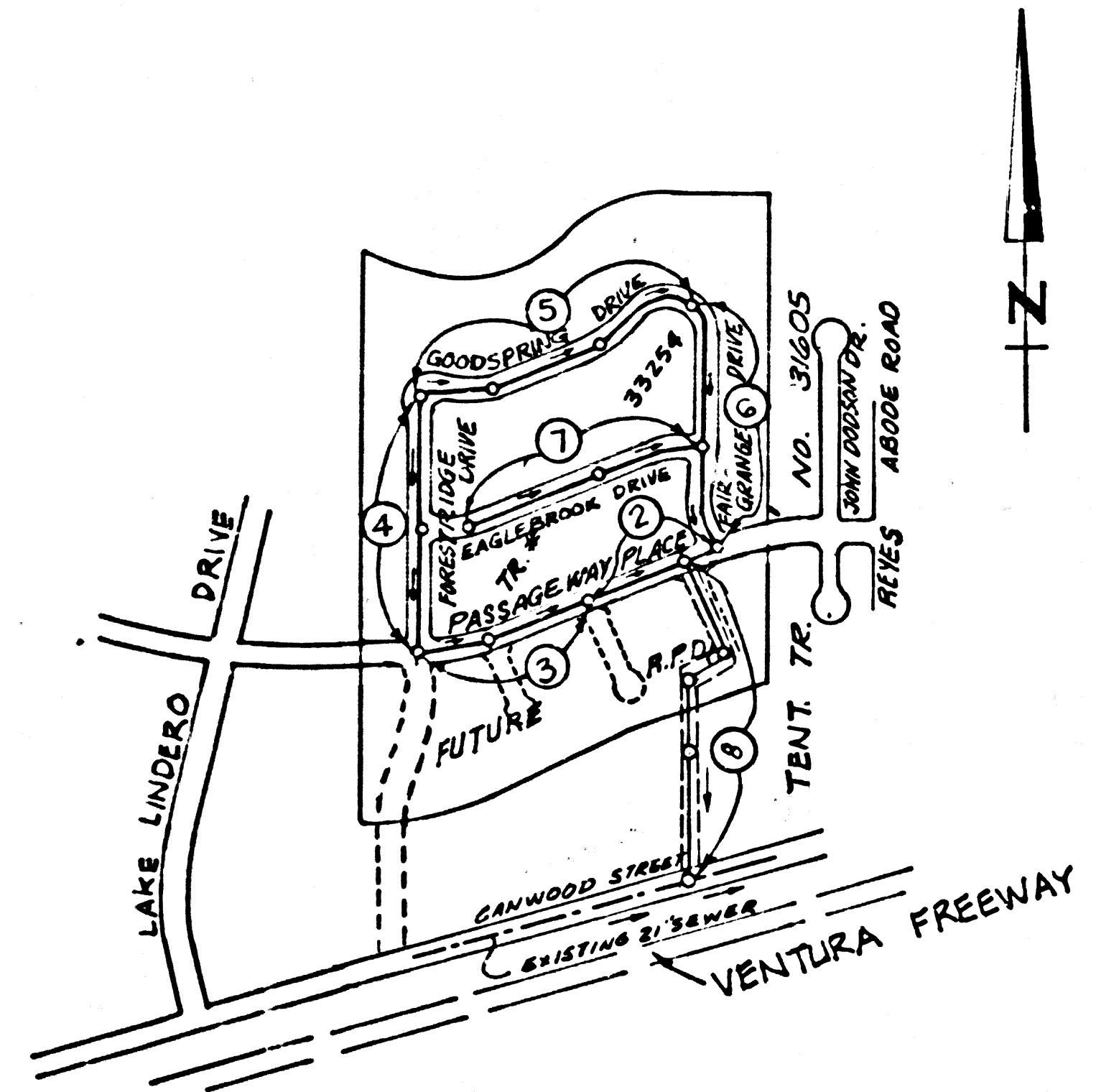
PREPARED IN THE OFFICES OF  
SIX AND ENGINEERING ASSOC.  
15230 BLANK BLVD. VAN NUYS  
CALIFORNIA 91411 - (213) 781-8050

BY: Nath. C. K...  
REG. C. E. No. 21823

46768

46769

B.M. Y-1554 ELEV. 928.207  
ROAD DEPARTMENT BENCH MARK TAG 2' SOUTH OF CURB  
AT SOUTH EAST CORNER REYES ADOBE ROAD OVER  
CROSSING & WEST BOUND ON-OFF RAMP VENTURA Fwy.  
40' SOUTH & 22' EAST OF INTERSECTION.  
MALIBU QUAD. 19.72



INDEX MAP  
SCALE: 1"=500'  
P.C. 9374

NOTE: NUMBERS IN CIRCLES INDICATE PAGE NUMBERS.

REVISIONS

REVISION NO. 1 DATE: 9/20/77  
(A.) REVISED INDEX MAP  
(B.) REVISED PLAN & PROFILE ON PAGE 2  
(C.) REVISED PLAN & PROFILE ON PAGE 5  
FROM STA. 6+32.00 TO 6+40.00  
(D.) REVISED PLAN & PROFILE ON PAGE 6  
FROM STA. 0+50.00 TO 6+32.00  
(E.) ADDED PLAN & PROFILE ON PAGE 8  
  
APPROVED: Brian S. Scanlon 2/09/6 10-4-77  
OFFICE OF CO. ENGR. K.E. N.E. DATE  
  
REVISION NO. 2 DATE: \_\_\_\_\_  
(A.) EXTEND 8" STUB TO R/W LINE AT STA.  
6+27.94 ON PAGE-2 & AT STA. 8+87.94,  
STA. 10+77.11 ON PAGE-3.  
  
APPROVED: [Signature] DATE 12/23/77

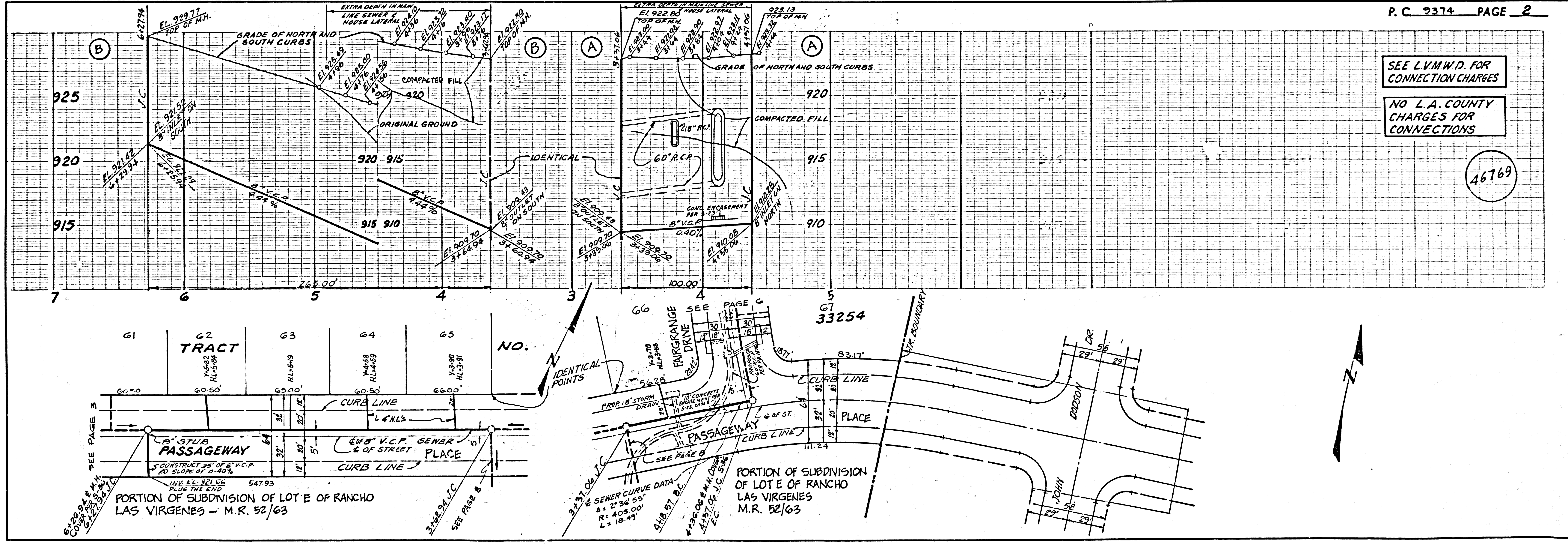
GENERAL NOTES:

- 1. ELEVATIONS ARE IN FEET ABOVE U.S.C. & G.S. SEA LEVEL DATUM OF 1929.
- 2. NO REVISIONS SHALL BE MADE IN THESE PLANS WITHOUT THE APPROVAL OF THE COUNTY ENGINEER.
- 3. NO REPRESENTATIVE OF THE COUNTY ENGINEER WILL SURVEY OR LAY OUT ANY PORTION OF THE WORK.
- 4. GRADES TO WHICH THIS IMPROVEMENT IS TO BE CONSTRUCTED ARE SHOWN ON PLANS AND PROFILES. GRADE POINTS FOR TOP OF CURBS, CENTER LINE OF STREETS, OR CENTER LINE OF ALLEYS ARE SHOWN BY CIRCLES ON PROFILES. AT ALL POINTS BETWEEN DESIGNATED POINTS THE GRADE SHALL BE ESTABLISHED SO AS TO CONFORM TO A STRAIGHT LINE DRAWN BETWEEN SAID DESIGNATED POINTS.
- 5. THE PRIVATE ENGINEER SHALL FURNISH THE COUNTY ENGINEER WITH GRADE SHEETS AND STATIONING FOR ALL HOUSE LATERALS AND "T" OR "T" BRANCHES AND SHALL PROVIDE STAKES FOR THEM AT THEIR PROPER LOCATIONS WITH STATIONING PLAINLY MARKED. ALL HOUSE LATERALS SHALL BE CONSTRUCTED IN A STRAIGHT ALIGNMENT AT RIGHT ANGLES FROM THE MAIN LINE SEWER EXCEPT AS SHOWN ON THE PLANS. HOUSE LATERALS FROM CHIMNEYS SHALL NOT HAVE AN ANGLE OF LESS THAN 45° WITH THE MAIN LINE SEWER. ANY CHANGE IN ALIGNMENT SHALL BE REQUESTED IN WRITING BY THE PRIVATE ENGINEER.
- 6. THE PRIVATE ENGINEER SHALL FURNISH THE HOUSE LATERAL DEPTH AT THE PROPERTY LINE BELOW THE TOP OF CURB ELEVATION FOR EACH HOUSE LATERAL ON THE GRADE SHEET.
- 7. BEFORE WORK CAN BE STARTED, THE CONTRACTOR MUST OBTAIN A PERMIT TO EXCAVATE IN COUNTY STREETS FROM THE L.A. COUNTY ROAD DEPT., DISTRICT OFFICE NO. 3, AND PAY A FEE TO THE COUNTY ENGINEER, AT THE MALIBU REGIONAL OFFICE, TO COVER THE COST OF CONSTRUCTION INSPECTION AND RECORD PLANS.
- 8. IF WORK IS TO BE DONE IN A STATE HIGHWAY, A PERMIT MUST BE OBTAINED FROM THE STATE OF CALIFORNIA, DIVISION OF HIGHWAYS, 130 SOUTH SPRING STREET, LOS ANGELES, CALIFORNIA.
- 9. APPROVAL OF THIS PLAN BY THE COUNTY OF LOS ANGELES DOES NOT CONSTITUTE A REPRESENTATION AS TO THE ACCURACY OF THE LOCATION OF OR THE EXISTENCE OR NON-EXISTENCE OF ANY UNDERGROUND UTILITY PIPE, OR STRUCTURE WITHIN THE LIMITS OF THIS PROJECT. THIS NOTE APPLIES TO ALL PAGES.
- 10. REFER TO SECTION 710.41 OF THE STANDARD SPECIFICATIONS, REGARDING SAFETY CADDRES.
- 11. THE UNDERGROUND UTILITY COMPANIES WITHIN THE LIMIT OF THIS PROJECT ARE AS FOLLOWS:  
"NONE"
- 12. PRIOR TO ISSUANCE OF THE REQUIRED SEWER CONSTRUCTION PERMIT BY THE COUNTY ENGINEER THE CONTRACTOR SHALL OBTAIN A PERMIT TO EXCAVATE FROM THE STATE OF CALIFORNIA DIVISION OF INDUSTRIAL SAFETY.

CONSTRUCTION NOTES:

- 1. WORK SHALL BE CONSTRUCTED ACCORDING TO THE STANDARD SPECIFICATIONS FOR PUBLIC WORKS CONSTRUCTION (1976 EDITION) AND COUNTY ENGINEER'S SPECIAL PROVISIONS FOR THE CONSTRUCTION OF SANITARY SEWERS DATED SEP. 31, 1976 AND SHALL BE PROSECUTED ONLY IN THE PRESENCE OF THE COUNTY ENGINEER.
- 2. THE CONTRACTOR SHALL NOTIFY THE CONSTRUCTION DIVISION BY TELEPHONE, (213)-974-7283, AT LEAST TWENTY-FOUR HOURS BEFORE STARTING ANY WORK UNDER THIS CONTRACT.
- 3. HOUSE LATERALS TO BE CONSTRUCTED WITH INVERTS AT PROPERTY LINE 6 FEET BELOW CURB GRADE EXCEPT AS NOTED.
- 4. WYE OR TEE BRANCHES MAY BE USED FOR CONNECTIONS TO MAINLINE SEWERS EXCEPT AS NOTED.
- 5. ALL STRUCTURES SHALL BE EITHER BRICK MANHOLES PER S-3 OR PRECAST CONCRETE MANHOLES PER S-36, EXCEPT AS NOTED.
- 6. PROVIDE STAKES ON THE PROPERTY LINE OR PROPERTY LINES PRODUCED AT RIGHT ANGLES TO THE SEWER LINE AT THE CENTER LINE OF EACH MANHOLE.
- 7. MANHOLE TOPS IN UNIMPROVED RIGHTS OF WAY TO BE SIX INCHES ABOVE FINISHED GRADE.
- 8. VITRIFIED CLAY PIPE JOINTS SHALL BE TYPE "D", "T", OR "G" PER STANDARD SPECIFICATIONS SECTION 308-2.
- 9. IF A POWER POLE IS WITHIN THREE FEET OF THE SEWER, THE SEWER SHALL BE ENCASED, PER S-33, CASE II, TWO FEET ON EACH SIDE FROM THE POINT OF INTERFERENCE.
- 10. IF DURING THE COURSE OF CONSTRUCTION IT IS DETERMINED THAT THERE IS LESS THAN FOUR FEET OF COVER OVER THE TOP OF A MAIN LINE OR HOUSE LATERAL V.C.P. SEWER WHICH IS NOT INDICATED ON THE PLANS, THE PIPE SHALL BE ENCASED PER S-33, CASE II UNLESS OTHERWISE APPROVED BY THE COUNTY ENGINEER.
- 11. ALL JOINTS BETWEEN CAST IRON PIPE AND VITRIFIED CLAY PIPE SHALL BE MADE WITH A RUBBER SLEEVE JOINT, TYPE "C" OR "D", (WITH BUSHING IF NECESSARY) PER STANDARD SPECIFICATIONS, SECTION 308-2.
- 12. SEWERS TO BE INSTALLED IN GARAGE PER SECTION 306-1.4 OF THE STANDARD SPECIFICATIONS AND SPECIAL PROVISIONS.
- 13. RESURFACE ALL TRENCHES WITHIN PAVED AREAS TO MEET L.A. COUNTY ROAD DEPT. OR CALIFORNIA STATE HIGHWAY REQUIREMENTS IN ACCORDANCE WITH PERMITS.
- 14. FULL COMPLIANCE WITH SECTION 306-1.5 OF THE SPECIAL PROVISIONS WILL BE REQUIRED FOR BACKFILL IN STREETS. CERTIFICATION OF BACKFILL COMPACTION AND SAND EQUIVALENTS BY A QUALIFIED, REGISTERED TESTING LABORATORY SHALL BE PROVIDED BY THE PERMITTEE PRIOR TO THE ISSUANCE OF A CERTIFICATE OF PARTIAL ACCEPTANCE.

COUNTY OF LOS ANGELES, CALIFORNIA  
STEPHEN J. KOONCE (ACTING) COUNTY ENGINEER LAS VIRGENES MUNICIPAL WATER DISTRICT  
APPROVED: [Signature] 8/17/77 REGIONAL ENGINEER  
REG. C.E. NO. 17727  
CHECKED: A.L. Robertson 8/17/77  
CALABASAS BLDG. DIST. 91 I.N. 0250.02



P.C. 9374 PAGE 2

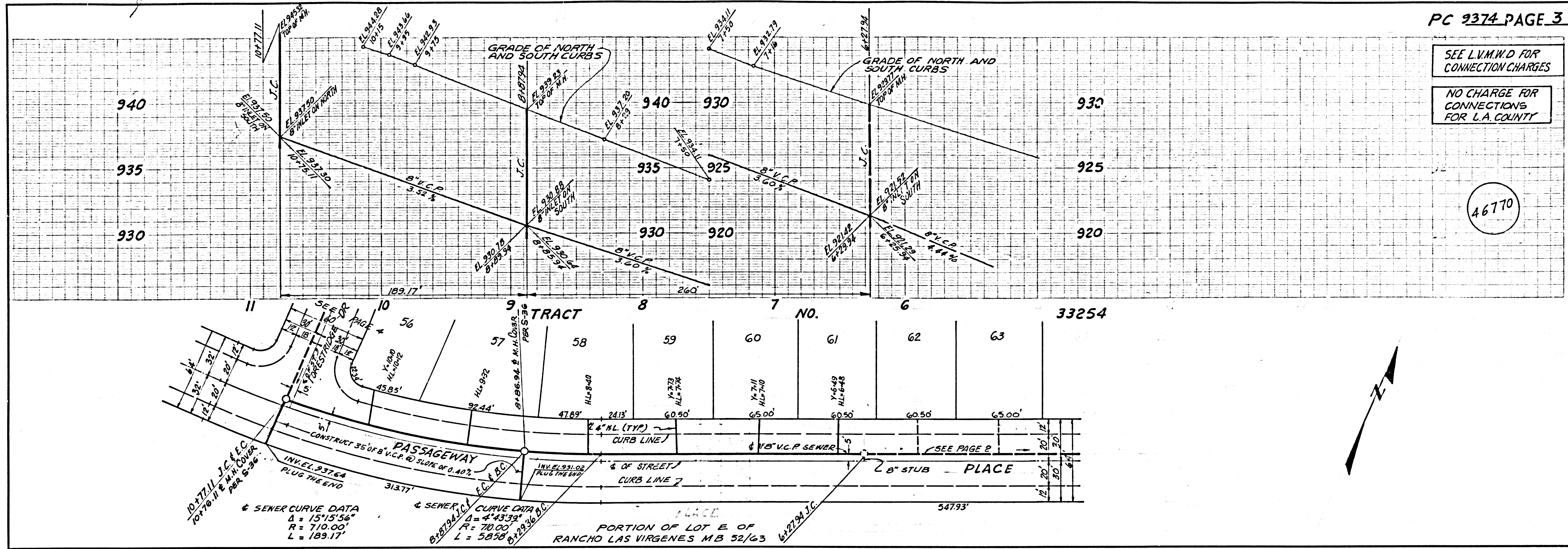
SEE L.V.M.W.D. FOR CONNECTION CHARGES  
NO L.A. COUNTY CHARGES FOR CONNECTIONS

46769

SEE L.V.M.W.D FOR CONNECTION CHARGES

NO CHARGE FOR CONNECTIONS FOR L.A. COUNTY

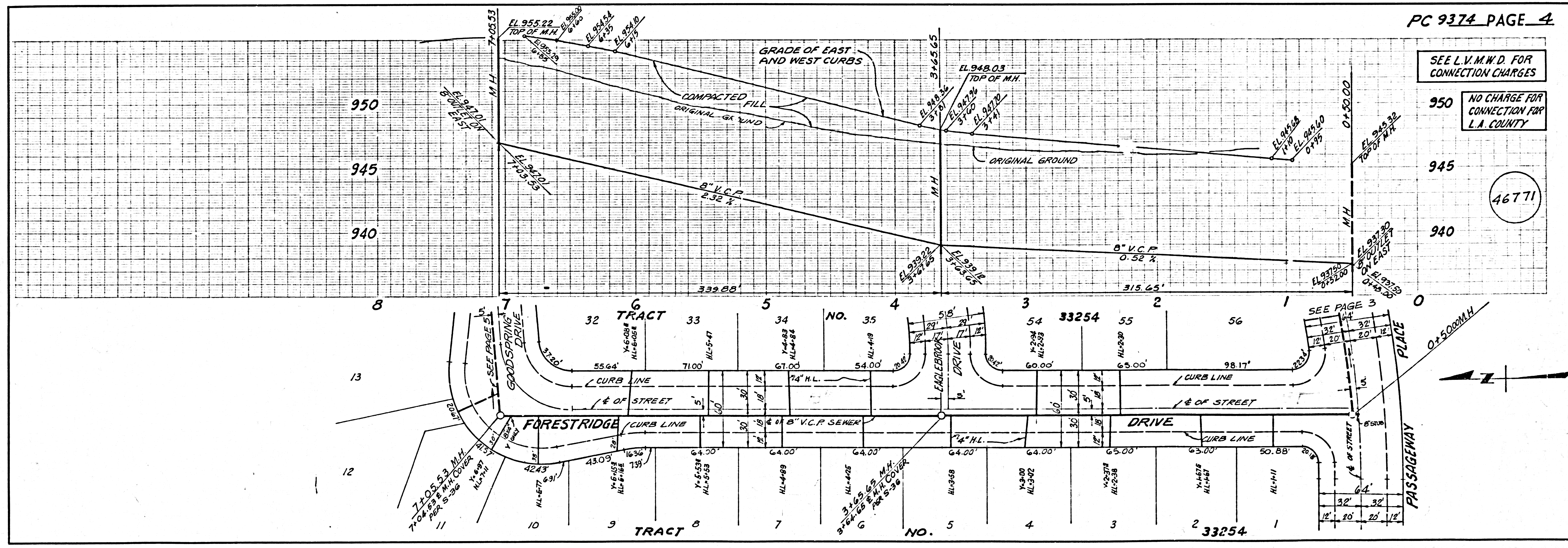
46770

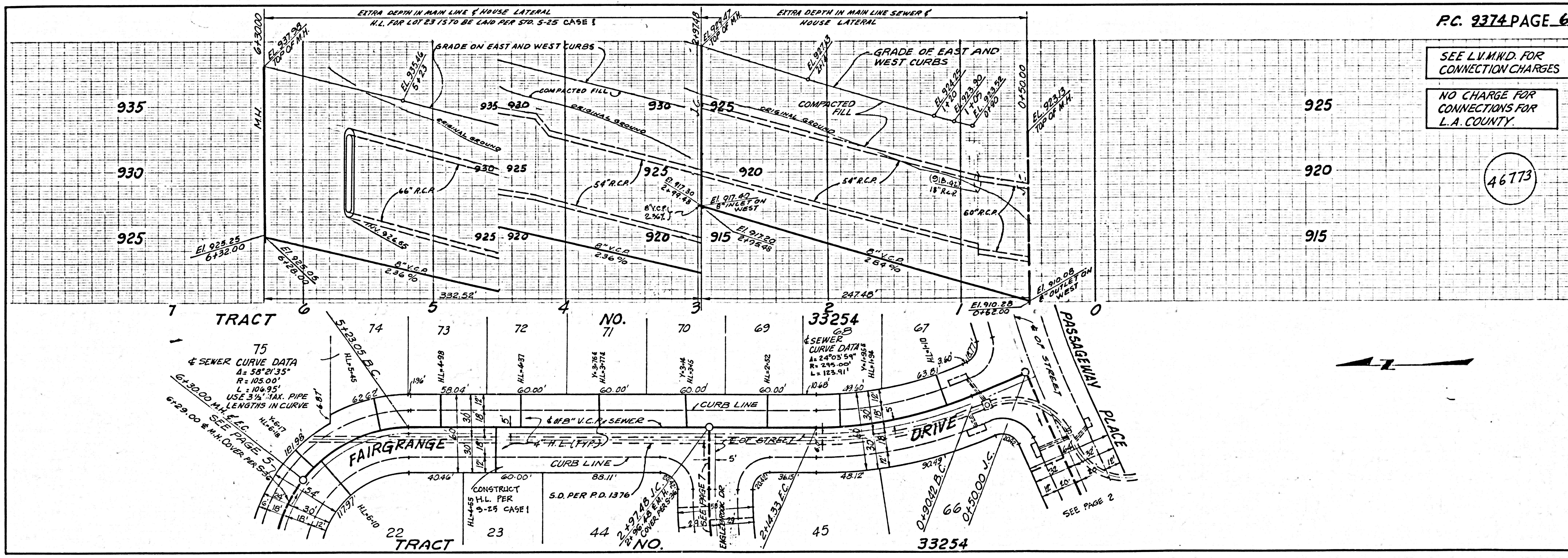
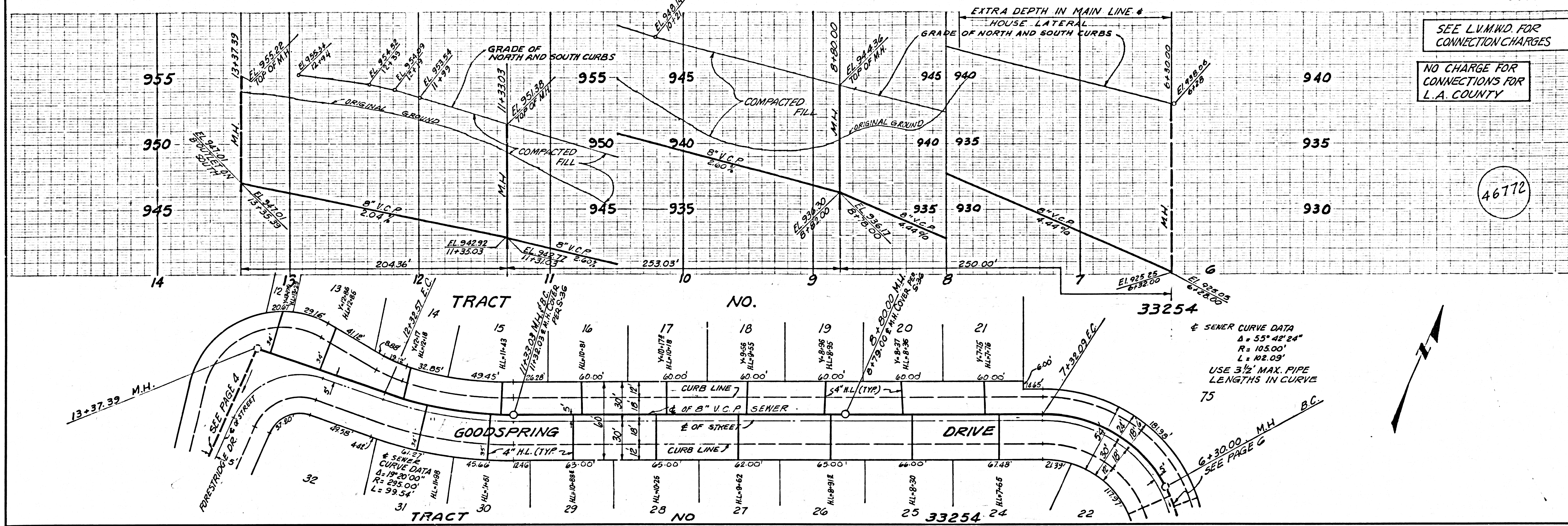


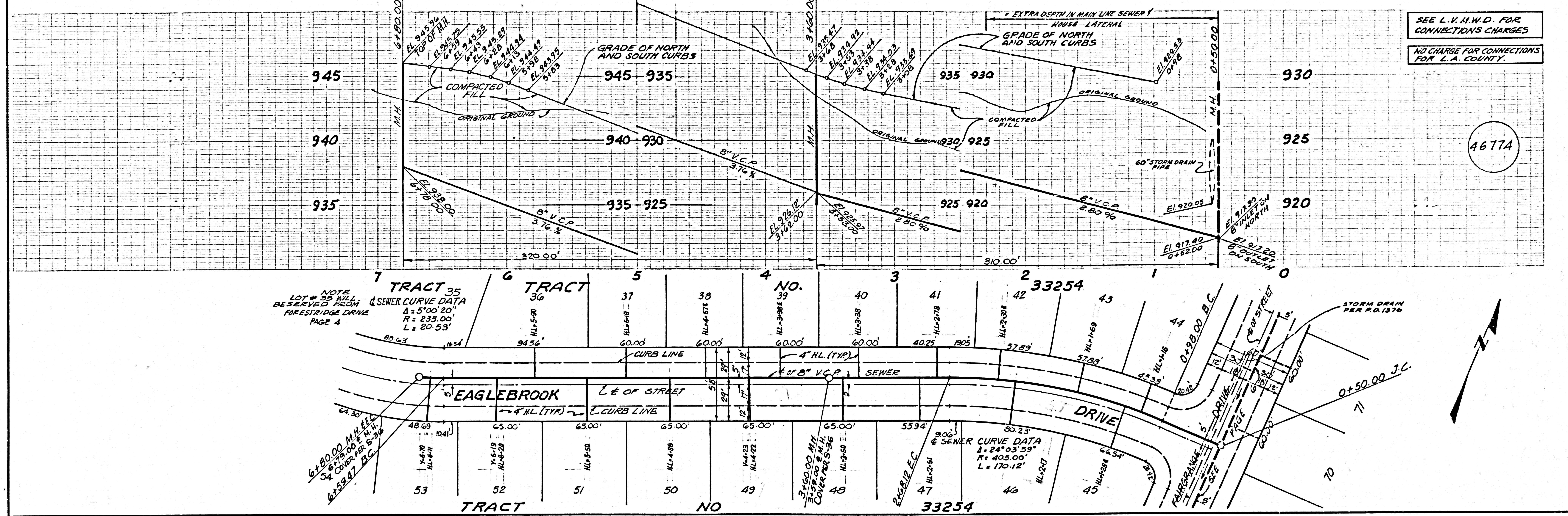
SEE L.V.M.W.D FOR CONNECTION CHARGES

NO CHARGE FOR CONNECTION FOR L.A. COUNTY

46771



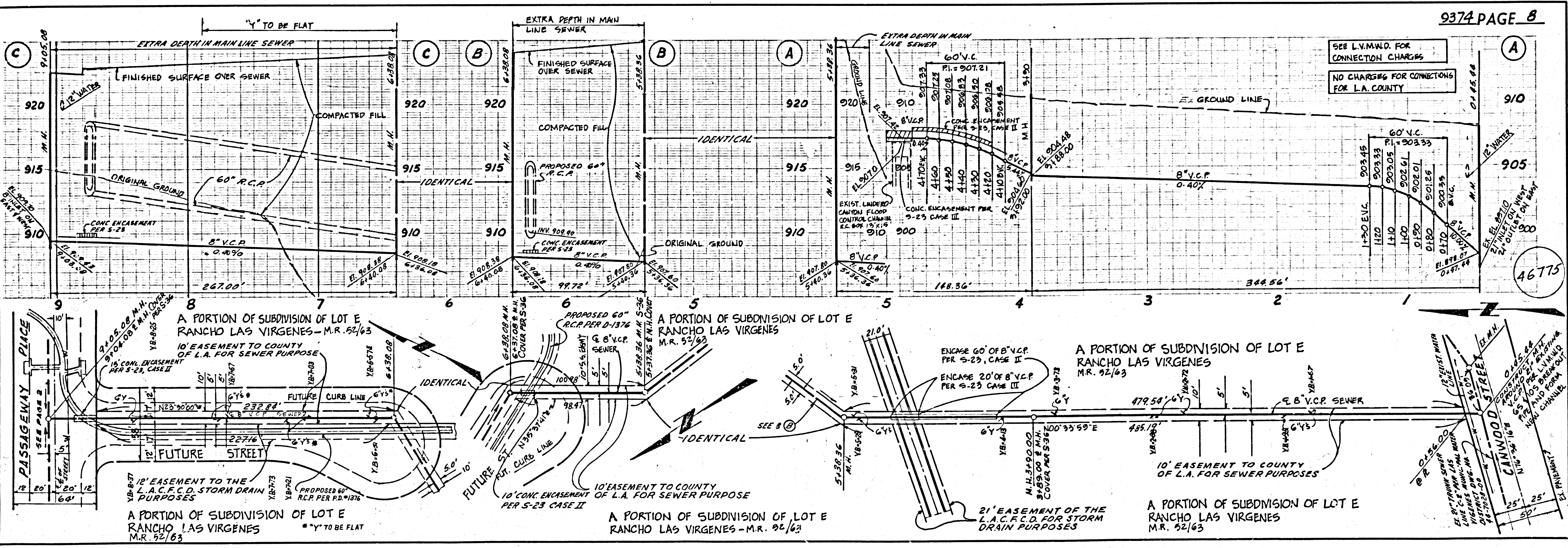




NOTE  
LOT # 35 WILL  
BE SERVED FROM  
FORESTRIDGE DRIVE  
PAGE 4

SEWER CURVE DATA  
Δ = 5'00" 20'  
R = 235.00'  
L = 20.53'

SEWER CURVE DATA  
Δ = 24'03" 59'  
R = 403.00'  
L = 170.12'



A PORTION OF SUBDIVISION OF LOT E  
RANCHO LAS VIRGENES - M.R. 52/63  
10' EASEMENT TO COUNTY  
OF L.A. FOR SEWER PURPOSE

A PORTION OF SUBDIVISION OF LOT E  
RANCHO LAS VIRGENES  
M.R. 52/63

A PORTION OF SUBDIVISION OF LOT E  
RANCHO LAS VIRGENES  
M.R. 92/63

A PORTION OF SUBDIVISION OF LOT E  
RANCHO LAS VIRGENES  
M.R. 52/63

A PORTION OF SUBDIVISION OF LOT E  
RANCHO LAS VIRGENES - M.R. 92/63

A PORTION OF SUBDIVISION OF LOT E  
RANCHO LAS VIRGENES  
M.R. 52/63