

TO BE CONSTRUCTED IN
 TRACT N° 33473
PRIVATE CONTRACT NO. 9383

W.S. 90, A-1
 4 SHEETS, 7 PAGES
 SCALE: VERT. 1"=4'
 HORIZ. 1"=60'
 APRIL, 1977
 PREPARED IN THE OFFICES OF
VANTAGE ENGINEERING CO.
 19730 VENTURA BLVD., SUITE 10
 WOODLAND HILLS, CALIF. 91364
 BY: *E. J. ...*
 REG. C. E. No. 14815

47349

- GENERAL NOTES:**
- ELEVATIONS ARE IN FEET ABOVE U.S.C. & G.S. SEA LEVEL DATUM OF 1929.
 - NO REVISIONS SHALL BE MADE IN THESE PLANS WITHOUT THE APPROVAL OF THE COUNTY ENGINEER.
 - NO REPRESENTATIVE OF THE COUNTY ENGINEER WILL SURVEY OR LAY OUT ANY PORTION OF THE WORK.
 - GRADES TO WHICH THIS IMPROVEMENT IS TO BE CONSTRUCTED ARE SHOWN ON PLANS AND HOUSE GRADE POINTS FOR TOP OF CURBS, CENTER LINE OF STREETS, OR CENTER LINE OF ALLEYS ARE SHOWN BY CIRCLES ON PROFILES. AT ALL POINTS BETWEEN DESIGNATED POINTS THE GRADE SHALL BE ESTABLISHED SO AS TO CONFORM TO A STRAIGHT LINE DRAWN BETWEEN SAID DESIGNATED POINTS.
 - THE PRIVATE ENGINEER SHALL FURNISH THE COUNTY ENGINEER WITH GAUGE SHEETS AND STATIONING FOR ALL HOUSE LATERALS AND "T" OR "T" BRANCHES AND SHALL PROVIDE STAKES FOR THEM AT THEIR PROPER LOCATIONS WITH STATIONING PLAINLY MARKED. ALL HOUSE LATERALS SHALL BE CONSTRUCTED IN A STRAIGHT ALIGNMENT AT RIGHT ANGLES FROM THE MAIN LINE SEWER EXCEPT AS SHOWN ON THE PLANS. HOUSE LATERALS FROM CHIMNEYS SHALL NOT HAVE AN ANGLE OF LESS THAN 45° WITH THE MAIN LINE SEWER. ANY CHANGE IN ALIGNMENT SHALL BE REQUESTED IN WRITING BY THE PRIVATE ENGINEER.
 - THE PRIVATE ENGINEER SHALL FURNISH THE HOUSE LATERAL DEPTH AT THE PROPERTY LINE BELOW THE TOP OF CURB ELEVATION FOR EACH HOUSE LATERAL ON THE GRADE SHEET.
 - BEFORE WORK CAN BE STARTED, THE CONTRACTOR MUST OBTAIN A PERMIT TO EXCAVATE IN COUNTY STREETS FROM THE L.A. COUNTY ROAD DEPT., DISTRICT OFFICE NO. 3, AND PAY A FEE TO THE COUNTY ENGINEER, MALIBU REGIONAL OFFICE, TO COVER THE COST OF CONSTRUCTION INSPECTION AND RECORD PLANS.
 - IF WORK IS TO BE DONE IN A STATE HIGHWAY, A PERMIT MUST BE OBTAINED FROM THE STATE OF CALIFORNIA, DIVISION OF HIGHWAYS, 120 SOUTH SPRING STREET, LOS ANGELES, CALIFORNIA.
 - APPROVAL OF THIS PLAN BY THE COUNTY OF LOS ANGELES DOES NOT CONSTITUTE A REPRESENTATION AS TO THE ACCURACY OF THE LOCATION OF OR THE EXISTENCE OR NON-EXISTENCE OF ANY UNDERGROUND UTILITY PIPE, OR STRUCTURE WITHIN THE LIMITS OF THIS PROJECT. THIS NOTE APPLIES TO ALL PAGES.
 - REFER TO SECTION 7-10.4.1 OF THE STANDARD SPECIFICATIONS REGARDING SAFETY ORDERS.
 - THE UNDERGROUND UTILITY OWNERS WITHIN THE LIMITS OF THIS PROJECT ARE AS FOLLOWS:
 1. GAS: SOUTHERN CALIFORNIA GAS CO.
 2. ELECTRIC: SOUTHERN CALIFORNIA Edison CO.
 3. WATER: LAS VIRGENES MUNICIPAL WATER DISTRICT
 4. TELEPHONE: PACIFIC TELEPHONE CO.
 - PRIOR TO ISSUANCE OF THE REQUIRED SEWER CONSTRUCTION PERMIT BY THE COUNTY ENGINEER, THE CONTRACTOR SHALL OBTAIN A PERMIT TO EXCAVATE FROM THE STATE OF CALIFORNIA, DIVISION OF INDUSTRIAL SAFETY.

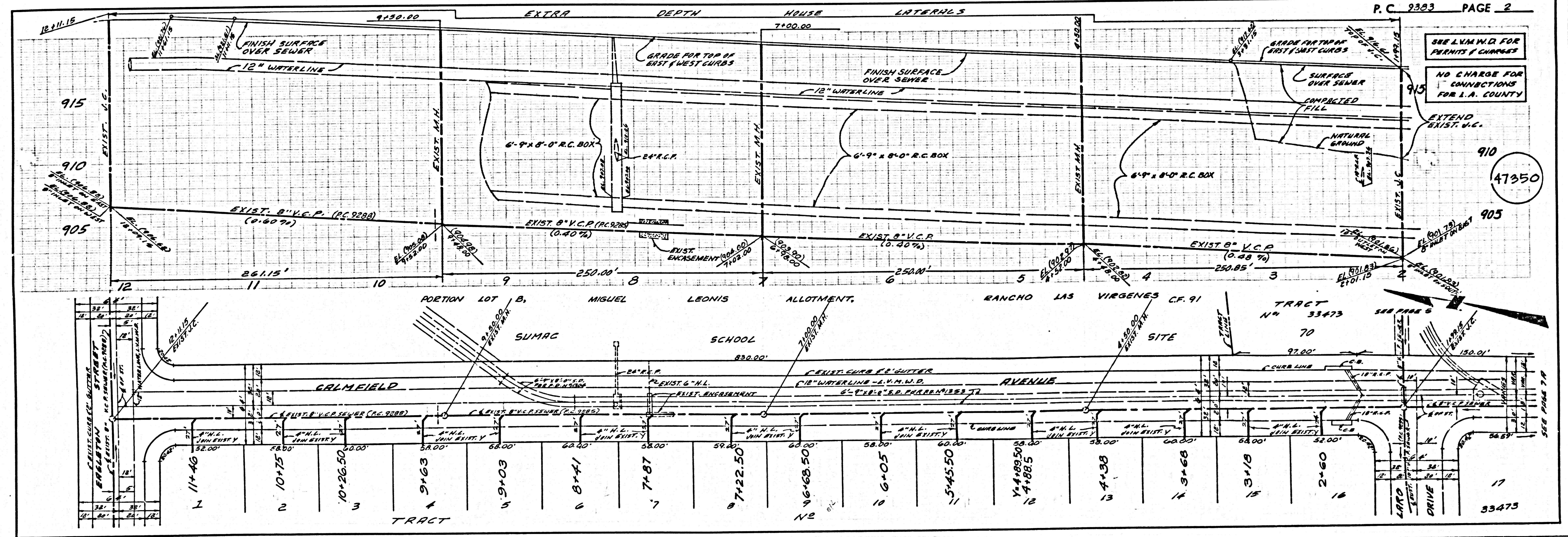
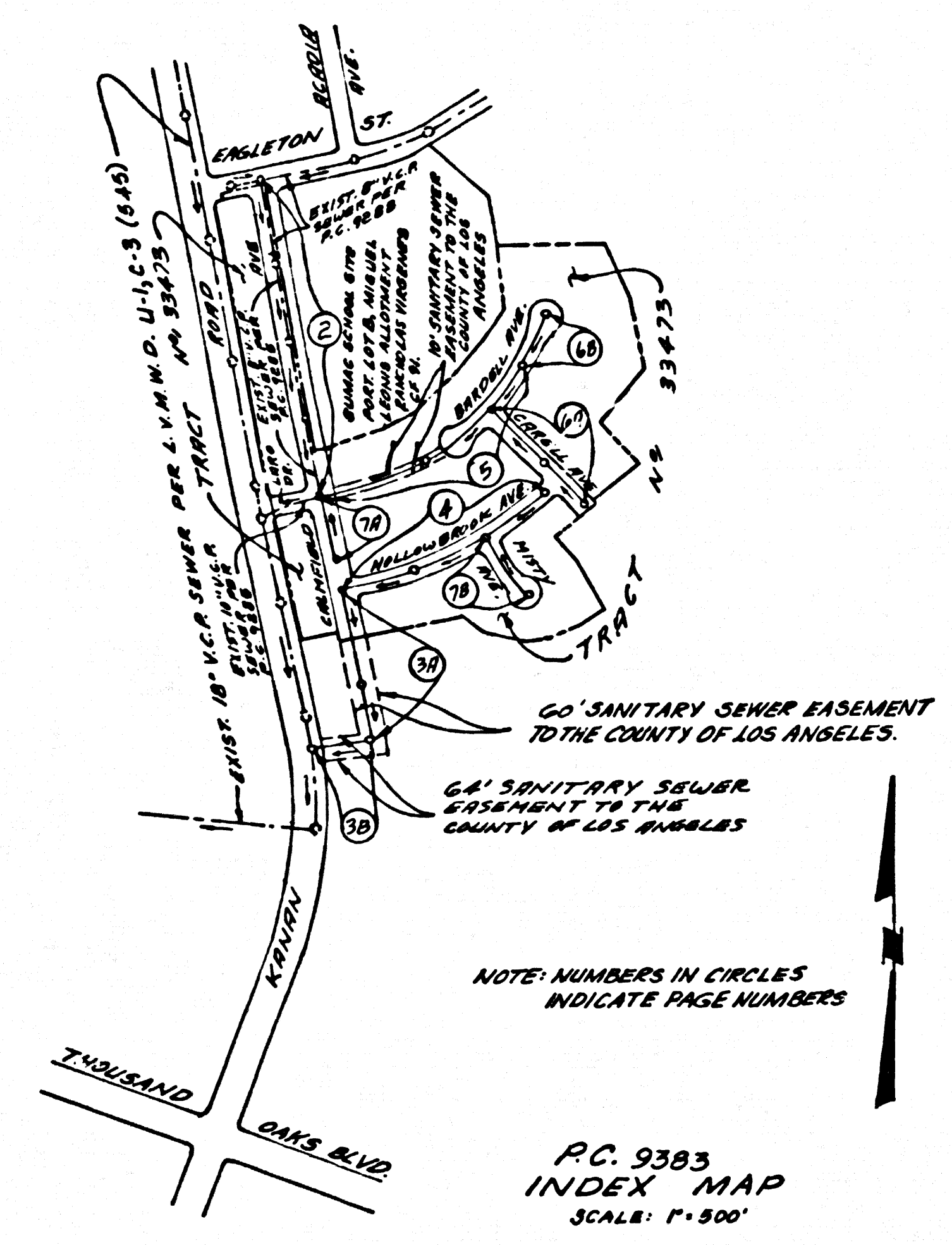
- CONSTRUCTION NOTES:**
- WORK SHALL BE CONSTRUCTED ACCORDING TO THE STANDARD SPECIFICATIONS FOR PUBLIC WORKS CONSTRUCTION (1976 EDITION) AND COUNTY ENGINEER SPECIAL PROVISIONS FOR THE CONSTRUCTION OF SANITARY SEWERS DATED SEPTEMBER 24, 1976 AND SHALL BE PROSECUTED ONLY IN THE PRESENCE OF THE COUNTY ENGINEER.
 - THE CONTRACTOR SHALL NOTIFY THE REGIONAL DIVISION BY TELEPHONE, (813) 976-7883, AT LEAST TWENTY-FOUR HOURS BEFORE STARTING ANY WORK UNDER THIS CONTRACT.
 - HOUSE LATERALS TO BE CONSTRUCTED WITH INVERTS AT PROPERTY LINE & FEET BELOW CURB GRADE EXCEPT AS NOTED.
 - WYE OR TEE BRANCHES MAY BE USED FOR CONNECTIONS TO MAINLINE SEWERS EXCEPT AS NOTED.
 - ALL STRUCTURES SHALL BE EITHER BRICK MANHOLES PER S-3 OR PRECAST CONCRETE MANHOLES PER S-36, EXCEPT AS NOTED.
 - PROVIDE STAKES ON THE PROPERTY LINE OR PROPERTY LINES PRODUCED AT RIGHT ANGLES TO THE SEWER LINE AT THE CENTER LINE OF EACH MANHOLE.
 - MANHOLE TOES IN IMPROVED RIGHTS OF WAY TO BE FINISH WITH FINISHED GRADE.
 - VERIFIED CLAY PIPE JOINTS SHALL BE TYPE "D", "F", OR "G" PER STANDARD SPECIFICATIONS SECTION 308-2.
 - IF A POWER POLE IS WITHIN THREE FEET OF THE SEWER, THE SEWER SHALL BE ENCASED, PER S-23, CASE II, TWO FEET ON EACH SIDE FROM THE POINT OF INTERFERENCE.
 - IF DURING THE COURSE OF CONSTRUCTION IT IS DETERMINED THAT THERE IS LESS THAN FOUR FEET OF COVER OVER THE TOP OF A MAIN LINE OR HOUSE LATERAL V.C.P. SEWER WHICH IS NOT INDICATED ON THE PLANS, THE PIPE SHALL BE ENCASED PER S-23, CASE II UNLESS OTHERWISE APPROVED BY THE COUNTY ENGINEER.
 - ALL JOINTS BETWEEN CAST IRON PIPE AND VERIFIED CLAY PIPE SHALL BE MADE WITH A RUBBER SLEEVE JOINT, TYPE "C" OR "D", (WITH SIGNING IF NECESSARY) PER STANDARD SPECIFICATIONS SECTION 308-2.
 - SEWERS TO BE AIR PROTECTED THROUGH MANHOLES PER SECTION 308-2 OF THE STANDARD SPECIFICATIONS AND SPECIAL PROVISIONS.
 - RESURFACE ALL TRENCHES WITHIN PAVED AREAS TO MEET L.A. COUNTY ROAD DEPT. OR CALIFORNIA STATE HIGHWAY REQUIREMENTS IN ACCORDANCE WITH PERMITS.
 - FULL COMPLIANCE WITH SECTION 304.1.B. OF THE SPECIAL PROVISIONS WILL BE REQUIRED FOR BACKFILL IN STREETS. CERTIFICATION OF BACKFILL COMPACTION AND SAND EQUIVALENT BY A QUALIFIED, REGISTERED TESTING LABORATORY SHALL BE PROVIDED BY THE CONTRACTOR TO THE ISSUANCE OF A CERTIFICATE OF PARTIAL ACCEPTANCE.
 - ALL PORTING & SEWER SHALL BE ABANDONED OR REMOVED IN ACCORDANCE WITH SEC. 306-6.1 OF THE STANDARD SPECIFICATIONS.
 - CONTRACTOR SHALL MAINTAIN SEWER SERVICE AT ALL TIMES DURING CONSTRUCTION OF MAIN LINE SEWER AND HOUSE LATERAL CONNECTIONS TO THE MANHOLE.

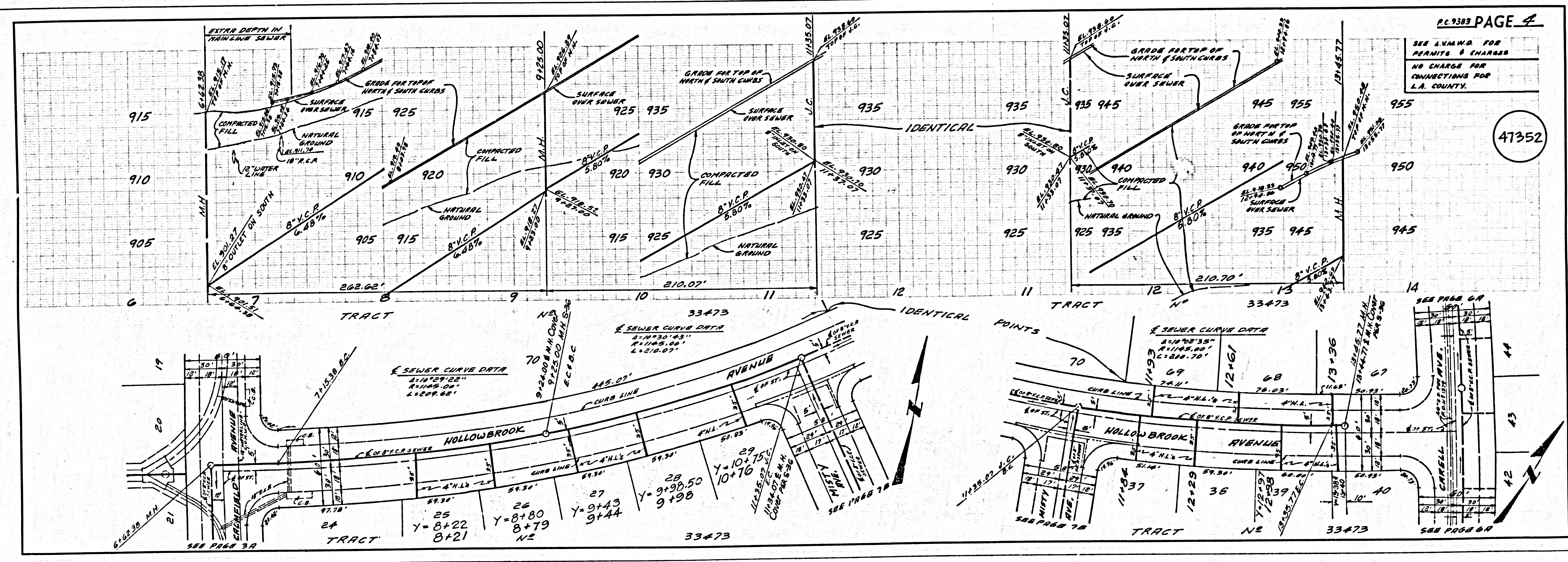
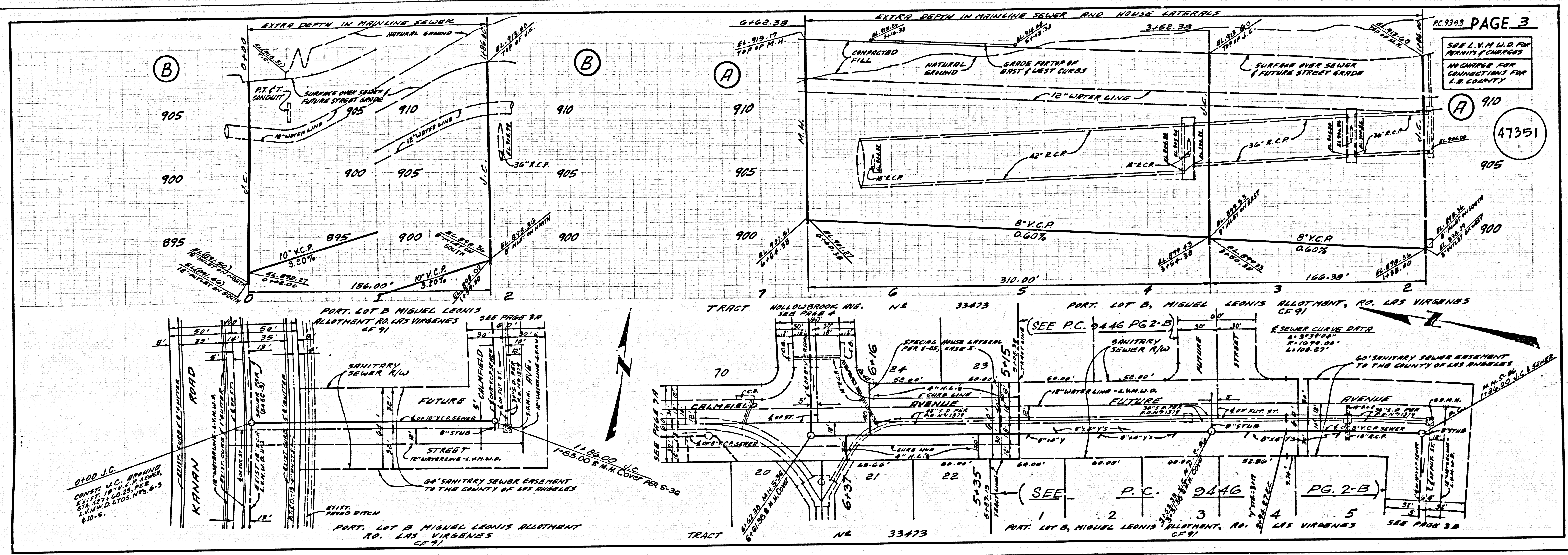
THE FOLLOWING LATEST REVISED STANDARD PLANS ON FILE IN THE OFFICE OF THE COUNTY ENGINEER SHALL APPLY IN THE CONSTRUCTION OF THIS PROJECT.

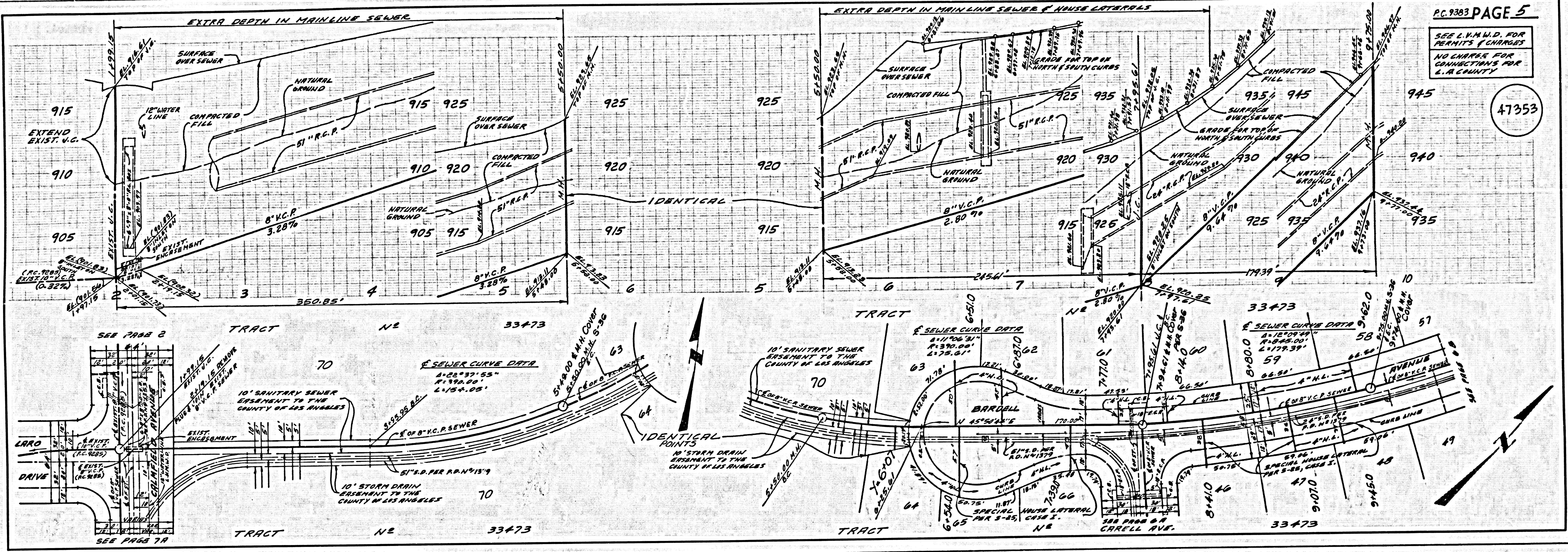
SECTION	
MINIMUM PUBLIC SAFETY REQUIREMENTS	S-3
BRICK MANHOLE	S-3
STANDARD MANHOLE STEP	S-17
REINFORCING FOR SEWER PIPE	S-2
CALLING AND INCASING	S-23
WYE OR TEE SUPPORT	S-23
ALLOWABLE TRENCH WIDTHS	S-23
LOCKING MANHOLE FRAM AND COVER	S-23
NON-REINFORCED PRECAST CONCRETE MANHOLE	S-36
SPECIAL MANHOLE LATERALS	S-36
SPECIAL SUPPORT AND PROTECTION	S-28

COUNTY OF LOS ANGELES, CALIFORNIA
 STEPHEN J. KOONCE, COUNTY ENGINEER LAS VIRGENES MUNICIPAL WATER DISTRICT
 APPROVED: *[Signature]* 9/21/77
 REG. C. E. No. 1712A
 CHECKED: *[Signature]* 9/21/77
 CALABASAS BLDG. DIST. 91 I.N. 0250.02

B.M. 09 9002 ELEV. 912.735
 R.D.M. TAG IN N. END HOWL FOR CATTLE UNDERPASS 41 FT. E/O S/L KANAN ROAD 0.45 MI. N. THOUSAND OAKS BLVD. MALIBU QUAD. 1974

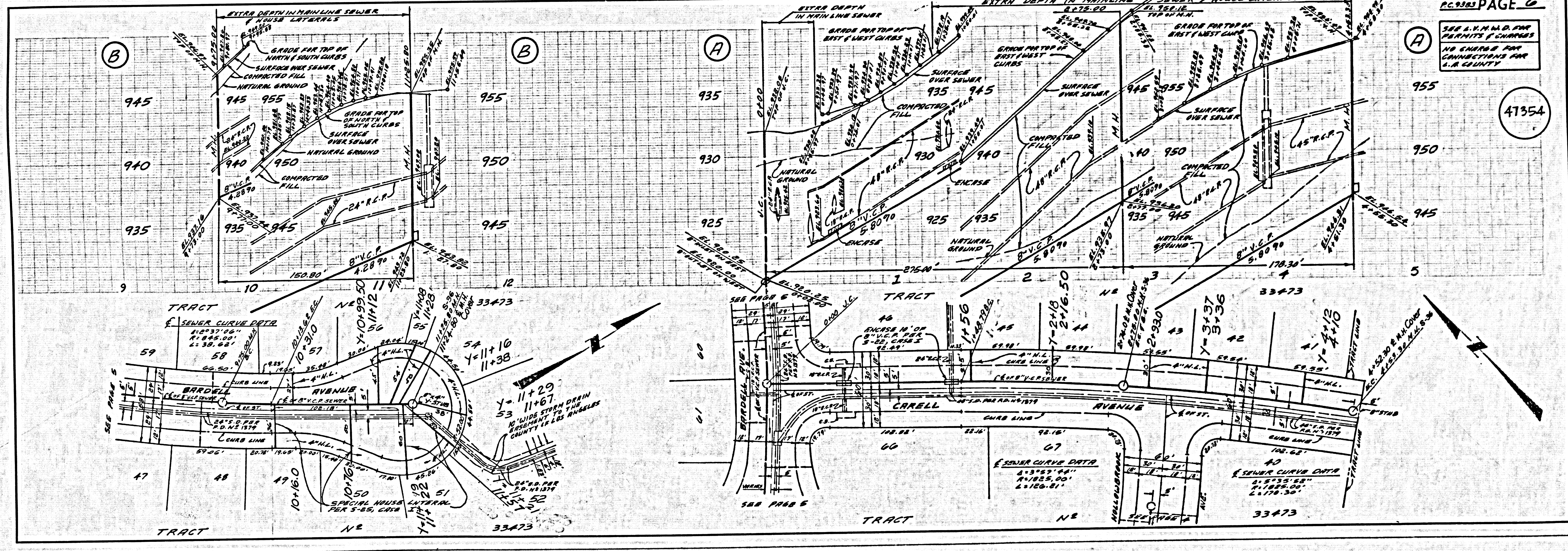






SEE L.V.M.U.D. FOR PERMITS & CHARGES
NO CHARGE FOR CONNECTIONS FOR L.A. COUNTY

47353



SEE L.V.M.U.D. FOR PERMITS & CHARGES
NO CHARGE FOR CONNECTIONS FOR L.A. COUNTY

47354

SEE L.V.M.W.D. FOR PERMITS & CHARGES
NO CHARGE FOR CONNECTIONS FOR L.A. COUNTY

47355

