

ISSUE NO PERMITS UNTIL
 PC 9348 IS ACCEPTED
 FOR PUBLIC USE.

LOTS 80 THRU 106
 SERVED BY 9348

LOTS 107, 108, 109
 ARE PART OF FLOOD
 CONTROL CHANNEL
 AND ARE NOT SERVED.

NO CONNECTION FOR THE DISPOSAL OF INDUSTRIAL WASTES
 SHALL BE MADE TO SEWERS SHOWN ON THESE DRAWINGS UNTIL
 A PERMIT FOR INDUSTRIAL WASTE WATER DISCHARGE HAS BEEN
 ISSUED BY THE SANITATION DISTRICTS FOR SAID CONNECTION.

BEFORE BREAKING INTO OR CONSTRUCTION ON A COUNTY
 SANITATION DISTRICT SEWER AND PRIOR TO FINAL ACCEPTANCE
 OF THE PROJECT SANITATION DISTRICT INSPECTOR SHALL BE
 NOTIFIED BY PHONE 962-8605, SO THAT REQUIRED INSPECTION
 CAN BE MADE.

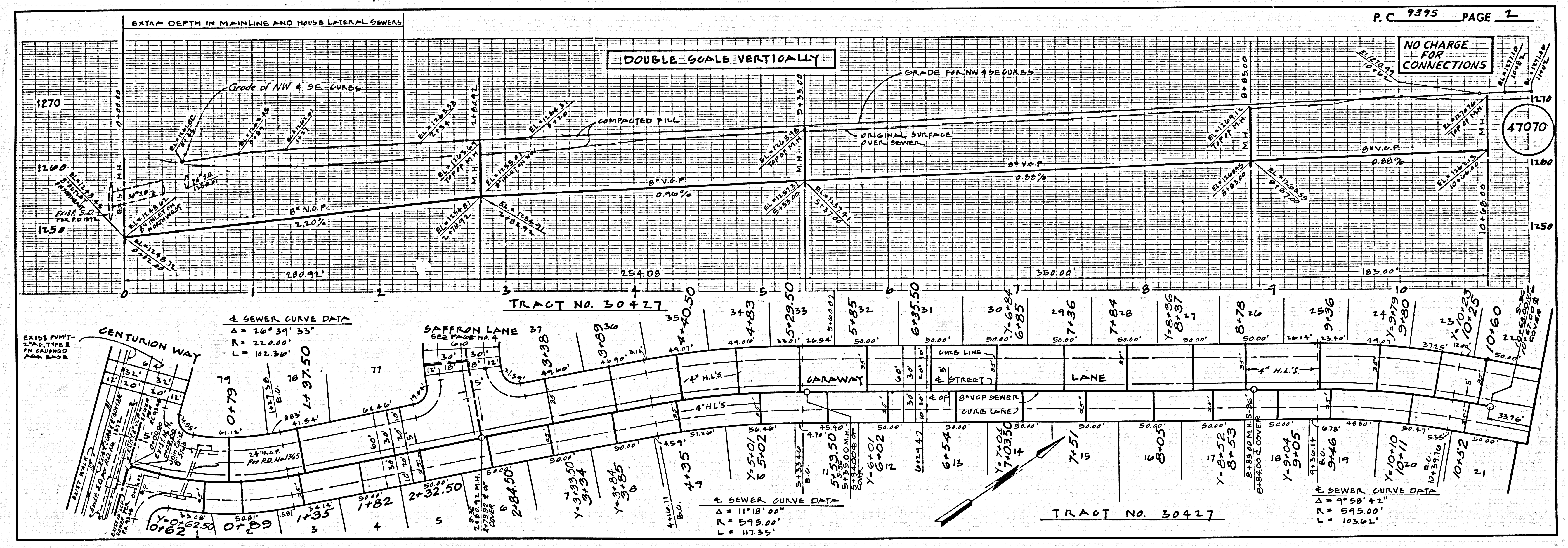
CONSTRUCTION NOTES:

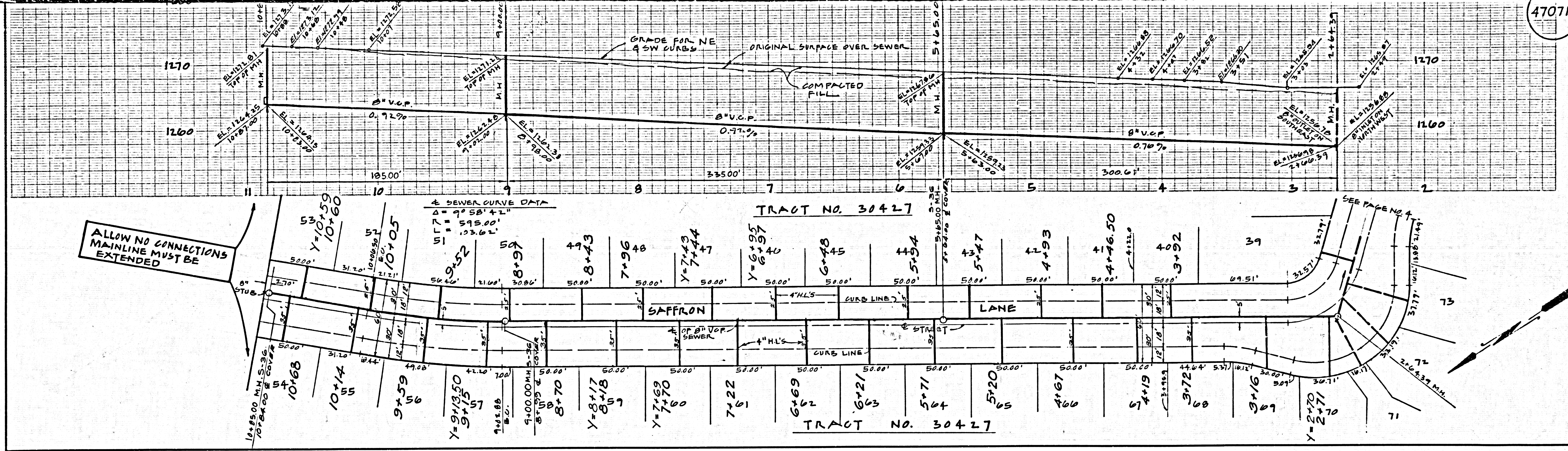
- WORK SHALL BE CONSTRUCTED ACCORDING TO THE STANDARD SPECIFICATIONS FOR PUBLIC WORKS CONSTRUCTION (1976 EDITION) AND COUNTY ENGINEER SPECIAL PROVISIONS FOR THE CONSTRUCTION OF SANITARY SEWERS DATED SEP. 24, 1976. AND SHALL BE PROSECUTED ONLY IN THE PRESENCE OF THE COUNTY ENGINEER.
- THE CONTRACTOR SHALL NOTIFY THE DESIGN DIVISION BY TELEPHONE, 818 976-7288, AT LEAST TWENTY-FOUR HOURS BEFORE STARTING ANY WORK UNDER THIS CONTRACT.
- HOUSE LATERALS TO BE CONSTRUCTED WITH INVERTS AT PROPERTY LINE 8 FEET BELOW CURB GRADE EXCEPT AS NOTED.
- WYE OR TE BRANCHES MAY BE USED FOR CONNECTIONS TO MAINLINE SEWERS EXCEPT AS NOTED.
- ALL STRUCTURES SHALL BE EITHER BRICK MANHOLES PER S-3 OR PRECAST CONCRETE MANHOLES PER S-36, EXCEPT AS NOTED.
- SETBACK STAKES ON THE PROPERTY LINE OR PROPERTY LINES PRODUCED AT RIGHT ANGLES TO THE SEWER LINE AT THE CENTER LINE OF EACH MANHOLE.
- VITRIFIED CLAY PIPE JOINTS SHALL BE TYPE "D", "F", OR "G" PER STANDARD SPECIFICATIONS SECTION 300-2.
- IF A POWER POLE IS WITHIN THREE FEET OF THE SEWER, THE SEWER SHALL BE ENCASED, PER S-23, CASE II, TWO FEET ON EACH SIDE FROM THE POINT OF INTERFERENCE.
- IF DURING THE COURSE OF CONSTRUCTION IT IS DETERMINED THAT THERE IS LESS THAN FOUR FEET OF COVER OVER THE TOP OF A MAIN LINE OR HOUSE LATERAL V.C.P. SEWER WHICH IS NOT INDICATED ON THE PLANS, THE PIPE SHALL BE ENCASED PER S-23, CASE II UNLESS OTHERWISE APPROVED BY THE COUNTY ENGINEER.
- ALL JOINTS BETWEEN CAST IRON PIPE AND VITRIFIED CLAY PIPE SHALL BE MADE WITH A RUBBER SLEEVE JOINT, TYPE "C" OR "D", STEPHEN & KODNCE, UNLESS OTHERWISE APPROVED BY THE COUNTY ENGINEER.
- TWIST BURNING IF NECESSARY PER STANDARD SPECIFICATIONS, SECTION 300-2.
- SEWERS TO BE TESTED FOR LEAKAGE PER SECTION 300-16 OF THE STANDARD SPECIFICATIONS AND SPECIAL PROVISIONS.
- RESURFACE ALL TRENCHES WITHIN PAVED AREAS TO MEET L.A. COUNTY ROAD DEPT. OR CALIFORNIA STATE HIGHWAY REQUIREMENTS IN ACCORDANCE WITH PERMITS.
- FULL COMPLIANCE WITH SECTION 306-1.8 OF THE SPECIAL PROVISIONS WILL BE REQUIRED FOR BACKFILL IN STREETS. CERTIFICATION OF BACKFILL COMPACTION AND SAND EQUIVALENTS BY A QUALIFIED, REGISTERED TESTING LABORATORY SHALL BE PROVIDED BY THE PERMITTEE PRIOR TO THE ISSUANCE OF A CERTIFICATE OF PARTIAL ACCEPTANCE.

THE FOLLOWING LATEST REVISED STANDARD PLANS ON FILE IN THE OFFICE OF THE COUNTY ENGINEER SHALL APPLY IN THE CONSTRUCTION OF THIS PROJECT:

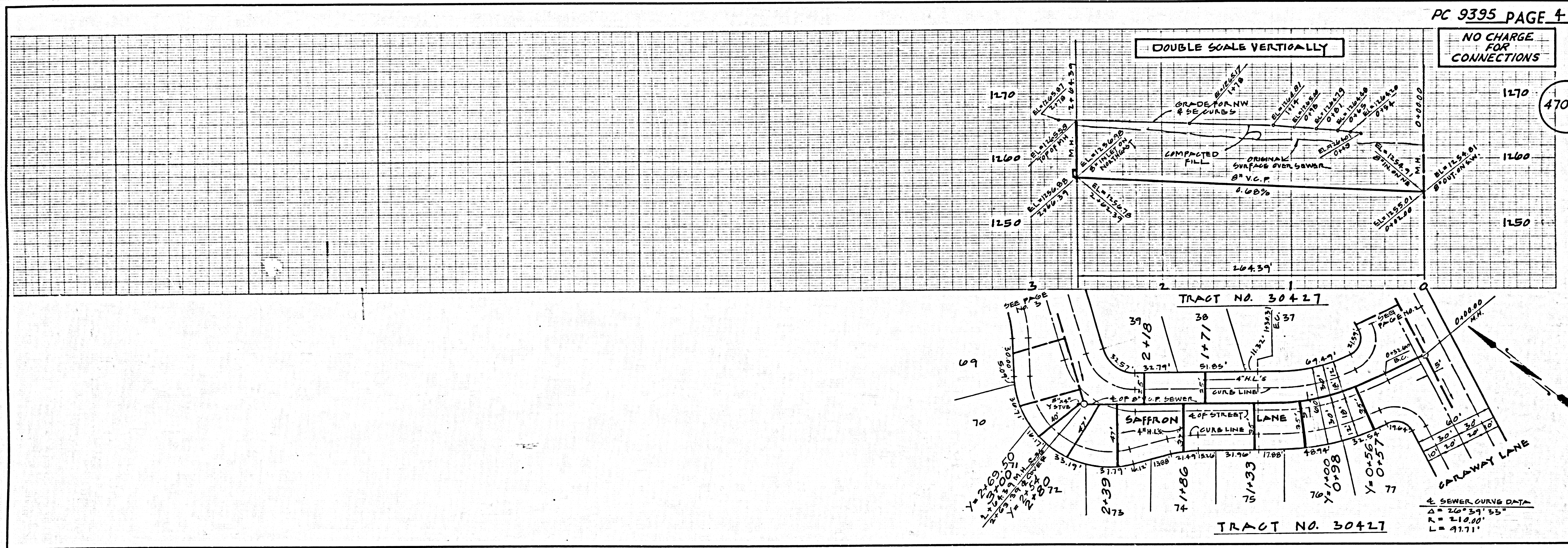
LEGEND S-1
MINIMUM PUBLIC SAFETY REQUIREMENTS S-2
BRICK MANHOLE S-3
STANDARD MANHOLE STEP S-17
BEDDING FOR SEWER PIPE S-21
CRADLING AND ENCASEMENT S-23
WYE OR TE SUPPORT S-25
ALLOWABLE TRENCH WIDTHS S-26
LOCKING MANHOLE FRAME AND COVER S-28
NON-REINFORCED PRECAST CONCRETE MANHOLE S-36

COUNTY OF LOS ANGELES, CALIFORNIA
 COUNTY ENGINEER: **STEPHEN J. KODNCE**
 CHIEF ENGINEER: **JOHN D. PARKHURST**
 APPROVED: *Spindler* 1/19/77
 CHECKED: *R. J. Koschky* 1/19/77
 REG. C. E. No. 16742
 SANTA CLARITA VALLEY BLDG. DIST. 8.2
 I.N. 0250.02





47071



PC 9395 PAGE 4

NO CHARGE FOR CONNECTIONS

47072