

TO BE CONSTRUCTED IN  
**TRACT NO. 30430**

**PRIVATE CONTRACT NO. 9404**

INDEX 273-5-129  
W.S. 62  
3 SHEETS, 5 PAGES

48120

SCALE: VERT. 1"=8'  
HORIZ. 1"=40'  
MAY, 1977  
PREPARED IN THE OFFICES OF  
**SPINDLER ENGINEERING CORPORATION**  
13720 Riverside Dr., Sherman Oaks, Calif. 91423  
BY: *Ronald Spindler*  
REG. C. E. No. 13194

THE FOLLOWING LATEST REVISED STANDARD PLANS ON FILE IN THE OFFICE OF THE COUNTY ENGINEER SHALL APPLY IN THE CONSTRUCTION OF THIS PROJECT:

LEGEND	5-1
MINIMUM PUBLIC SAFETY REQUIREMENTS	5-2
BRICK MANHOLE	5-3
STANDARD MANHOLE STOP	5-4
STANDARD FOR SEWER PIPE	5-5
CRADLING AND ENCASMENT	5-6
WYE OR TEE SUPPORT	5-7
ALLOWABLE TRENCH WIDTHS	5-8
LOCKING MANHOLE FRAME AND COVER	5-9
NON-REINFORCED PRECAST CONCRETE MANHOLE	5-10

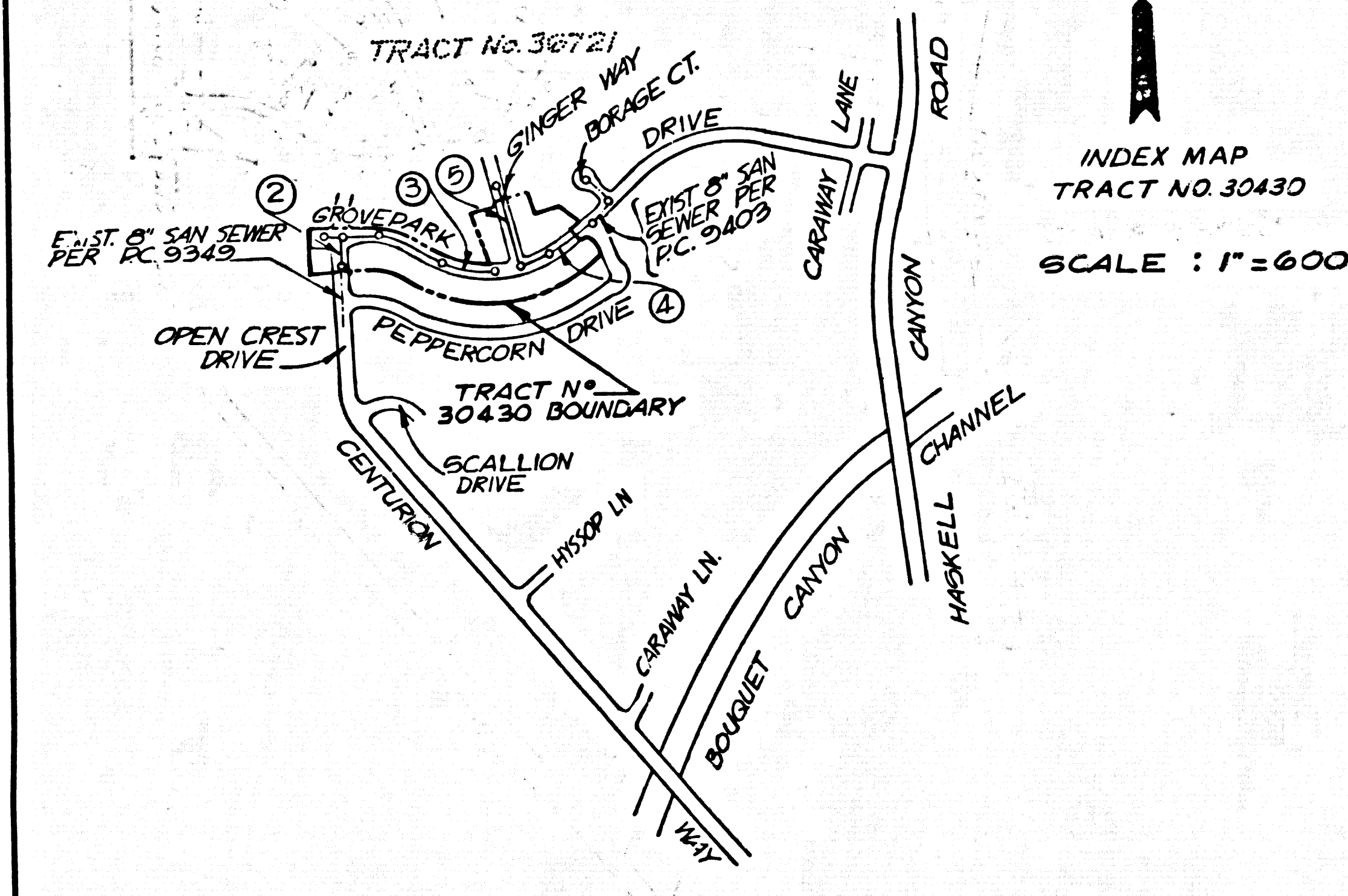
COUNTY OF LOS ANGELES, CALIFORNIA  
STEPHEN J. KENNEDY COUNTY ENGINEER JOHN D. PARKHURST, CHIEF ENGINEER  
APPROVED *Sam H. Miller 12/5/77* APPROVED *John R. Dineen 12/6/77*  
REGIONAL ENGINEER DISTRICT ENGINEER  
CHECKED *Ed J. Kopych 12/5/77*  
REG. C. E. NO. 16712  
SANTA CLARITA VALLEY BLDG. DIST. B. 2 J.N. 0250.02

**BECHTOL & EMERSON**  
825 COLORADO BLVD.  
SUITE 222  
LOS ANGELES, CA. 90041  
TEL. (213) 254-5134  
BY: *James T. Emerson*  
JAMES T. EMERSON 106931

B.M. BL. 1740 ELEV. 1305.666  
U.S.G.S. Mon. 3in. up 2011 S.E. & Bouquet Cr. Rd.  
under transmission line 10.1 Mi. N.W. Susan  
Belt Way Nhd. N-2 1929 2in. I.P. 3ft. up 271 N.  
**NEWHALL QUAD. 19 72**

- GENERAL NOTES:**
- ELEVATIONS ARE IN FEET ABOVE U.S.C. & G.S. SEA LEVEL DATUM OF 1929.
  - NO REVISIONS SHALL BE MADE IN THESE PLANS WITHOUT THE APPROVAL OF THE COUNTY ENGINEER.
  - NO REPRESENTATIVE OF THE COUNTY ENGINEER WILL SURVEY OR LAY OUT ANY PORTION OF THE WORK.
  - GRADES TO WHICH THIS IMPROVEMENT IS TO BE CONSTRUCTED ARE SHOWN ON PLANS AND PROFILES. GRADE POINTS FOR TOP OF CURBS, CENTER LINE OF STREETS, OR CENTER LINE OF ALLEYS ARE SHOWN ON PROFILES. AT ALL POINTS BETWEEN DESIGNATED POINTS THE GRADE SHALL BE ESTABLISHED SO AS TO CONFORM TO A STRAIGHT LINE DRAWN BETWEEN SAID DESIGNATED POINTS.
  - THE PRIVATE ENGINEER SHALL FURNISH THE COUNTY ENGINEER WITH GRADE SHEETS AND STATIONING FOR ALL HOUSE LATERALS AND "T" OR "Y" BRANCHES AND SHALL PROVIDE STAKES FOR THEM AT THEIR PROPER LOCATIONS WITH STATIONING PLAINLY MARKED. ALL HOUSE LATERALS SHALL BE CONSTRUCTED IN A STRAIGHT ALIGNMENT AT RIGHT ANGLES FROM THE MAIN LINE SEWER EXCEPT AS SHOWN ON THE PLANS. HOUSE LATERALS FROM CHIMNEYS SHALL NOT HAVE AN ANGLE OF LESS THAN 45° WITH THE MAIN LINE SEWER. ANY CHANGE IN ALIGNMENT SHALL BE REQUESTED IN WRITING BY THE PRIVATE ENGINEER.
  - THE PRIVATE ENGINEER SHALL FURNISH THE HOUSE LATERAL DEPTH AT THE PROPERTY LINE BEFORE THE TOP OF CURB ELEVATION FOR EACH HOUSE LATERAL ON THE GRADE SHEET.
  - BEFORE WORK CAN BE STARTED, THE CONTRACTOR MUST OBTAIN A PERMIT TO EXCAVATE IN COUNTY STREETS FROM THE L.A. COUNTY ROAD DEPT. DISTRICT OFFICE NO. 9 AND PAY A FEE TO THE COUNTY ENGINEER, SANTA CLARITA VALLEY REGIONAL OFFICE, TO COVER THE COST OF CONSTRUCTION INSPECTION AND RECORD PLANS.
  - IF WORK IS TO BE DONE IN A STATE HIGHWAY, A PERMIT MUST BE OBTAINED FROM THE STATE OF CALIFORNIA, DIVISION OF HIGHWAYS, 120 SOUTH SPRING STREET, LOS ANGELES, CALIFORNIA.
  - APPROVAL OF THIS PLAN BY THE COUNTY OF LOS ANGELES DOES NOT CONSTITUTE A REPRESENTATION AS TO THE ACCURACY OF THE LOCATION OF OR THE EXISTENCE OR NON-EXISTENCE OF ANY UNDERGROUND UTILITY PIPE, OR STRUCTURE WITHIN THE LIMITS OF THIS PROJECT. THIS NOTE APPLIES TO ALL PAGES.
  - REFER TO SECTION 710.61 OF THE STANDARD SPECIFICATIONS, REGARDING SAFETY ORDERS.
  - PAIRS TO THE ISSUANCE OF A PERMIT TO EXCAVATE SHALL BE OBTAINED FROM THE COUNTY ENGINEER, SANTA CLARITA VALLEY REGIONAL OFFICE, TO COVER THE COST OF CONSTRUCTION INSPECTION AND RECORD PLANS.
  - EXCAVATE FROM THE STATE OF CALIFORNIA DIVISION OF INDUSTRIAL SAFETY.

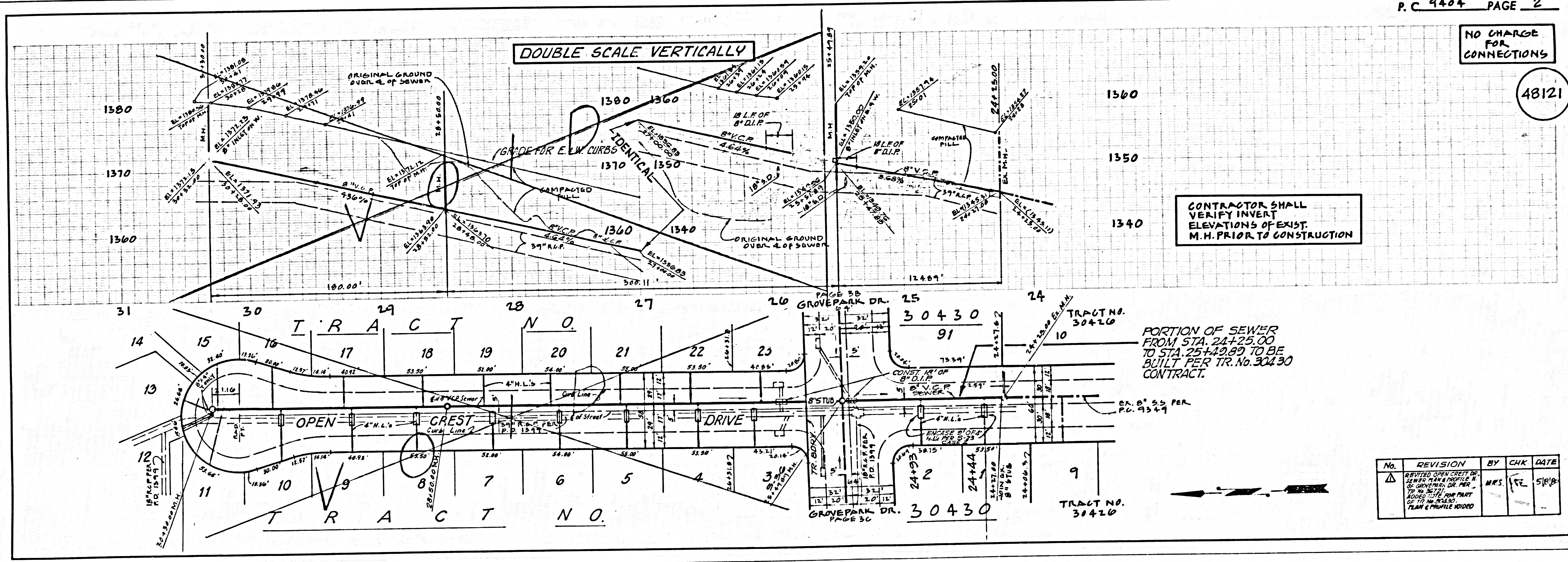
- REVISION NO. 1** 5/8/80
- PAGE 1 INDEX MAP REVISED TO SHOW NEW LIMITS FOR TRACT NO. 30430
- PAGE 2 DELETED SEWER OPEN CREST DRIVE BETWEEN STA. 25+51.89 AND 30+30.00.  
REVISED SEWER PLAN C PROFILE OPEN CREST DR. BETWEEN STA. 24+25 AND 25+43.89
- PAGE 3A DELETED SEWER IN BROCCUS PLACE.  
REVISED SEWER PLAN AND PROFILE GROVE-PARK DR. BETWEEN STA 0+00.00 AND 6+50.00, ALONG THE NORTH SIDE OF GROVE-PARK DR. DELETED LOTS 23 THRU 33 INCL. TR. 30430 AND REPLACED WITH LOTS 47 THRU 55 INCL. TRACT 30721.
- PAGE 3C REVISED SEWER PLAN AND PROFILE GROVE-PARK DR. BETWEEN STA. 0+00 AND 1+15.00.
- PAGE 4B DELETED SEWER IN MARJORAM COURT.
- PAGE 5 REVISED SEWER PLAN AND PROFILE GINGER WAY BETWEEN STA. 0+00 E. 2+72.10.  
DELETED SEWER BETWEEN STA 2+72.10 AND 6+50.00.  
APPROVED: *Ralph David Stewart 12/29/77*  
OFFICE OF COUNTY ENGINEER



- CONSTRUCTION NOTES:**
- WORK SHALL BE CONSTRUCTED ACCORDING TO THE STANDARD SPECIFICATIONS FOR PUBLIC WORKS CONSTRUCTION (1976 EDITION) AND COUNTY ENGINEER SPECIAL PROVISIONS FOR THE CONSTRUCTION OF SANITARY SEWERS DATED 5/6/76, 1/19/76 AND SHALL BE PROSECUTED ONLY IN THE PRESENCE OF THE COUNTY ENGINEER.
  - THE CONTRACTOR SHALL NOTIFY THE DISTRICT DIVISION BY TELEPHONE, (213) 474-7185, AT LEAST TWENTY-FOUR HOURS BEFORE STARTING ANY WORK UNDER THIS CONTRACT.
  - HOUSE LATERALS TO BE CONSTRUCTED WITH INVERTS AT PROPERTY LINE & FEET BELOW CURB GRADE EXCEPT AS NOTED.
  - WYE OR TEE BRANCHES MAY BE USED FOR CONNECTIONS TO MAINLINE SEWERS EXCEPT AS NOTED.
  - ALL STRUCTURES SHALL BE EITHER BRICK MANHOLES PER 5-3 OR PRECAST CONCRETE MANHOLES PER 5-3, EXCEPT AS NOTED.
  - PROVIDE STAKES ON THE PROPERTY LINE OR PROPERTY LINE PRODUCE AT RIGHT ANGLES TO THE SEWER LINE AT THE CENTER LINE OF EACH MANHOLE.
  - MANHOLE TOPS IN UNIMPROVED RIGHTS OF WAY TO BE SIX INCHES ABOVE FINISHED GRADE.
  - VITRIFIED CLAY PIPE JOINTS SHALL BE TYPE "B", "T", OR "G" PER STANDARD SPECIFICATIONS SECTION 506.2.
  - IF A POWER POLE IS WITHIN THREE FEET OF THE SEWER, THE SEWER SHALL BE ENCASED, PER 5-22, CASE B, TWO FEET ON EACH SIDE FROM THE POINT OF INTERFERENCE.
  - IF DURING THE COURSE OF CONSTRUCTION IT IS DETERMINED THAT THERE IS LESS THAN FOUR FEET OF COVER OVER THE TOP OF A MAIN LINE OR HOUSE LATERAL V.C.P. SEWER WHICH IS NOT INDICATED ON THE PLANS, THE PIPE SHALL BE ENCASED PER 5-22, CASE B UNLESS OTHERWISE APPROVED BY THE COUNTY ENGINEER.
  - ALL JOINTS BETWEEN CAST IRON PIPE AND VITRIFIED CLAY PIPE SHALL BE MADE WITH A RUBBER SLEEVE JOINT, TYPE "C" OR "D", (WITH BUSHING IF NECESSARY) PER STANDARD SPECIFICATIONS, SECTION 506.2.
  - SEWERS TO BE TESTED FOR LEAKAGE PER SECTION 306-A OF THE STANDARD SPECIFICATIONS AND SPECIAL PROVISIONS.
  - RESURFACE ALL TRENCHES WITHIN PAVED AREAS TO MEET L.A. COUNTY ROAD DEPT. OR CALIFORNIA STATE HIGHWAY REQUIREMENTS IN ACCORDANCE WITH PERMITS.
  - FULL COMPLIANCE WITH SECTION 306-B.5 OF THE SPECIAL PROVISIONS WILL BE REQUIRED FOR BACKFILL IN STREETS. CERTIFICATION OF ADEQUATE COMPACTION AND SAND EQUIVALENTS BY A QUALIFIED, REGISTERED TESTING LABORATORY SHALL BE PROVIDED BY THE PERMITTEE PRIOR TO THE ISSUANCE OF A CERTIFICATE OF PARTIAL ACCEPTANCE.
- NO CONNECTION FOR THE DISPOSAL OF INDUSTRIAL WASTES SHALL BE MADE TO SEWER SEWER DIVISION OR THROUGH UNITS.  
A PERMIT FOR INDUSTRIAL WASTE WATER DISCHARGE HAS BEEN ISSUED BY THE SANITATION DISTRICTS FOR SAID CONNECTION.

NO CHARGE FOR CONNECTIONS

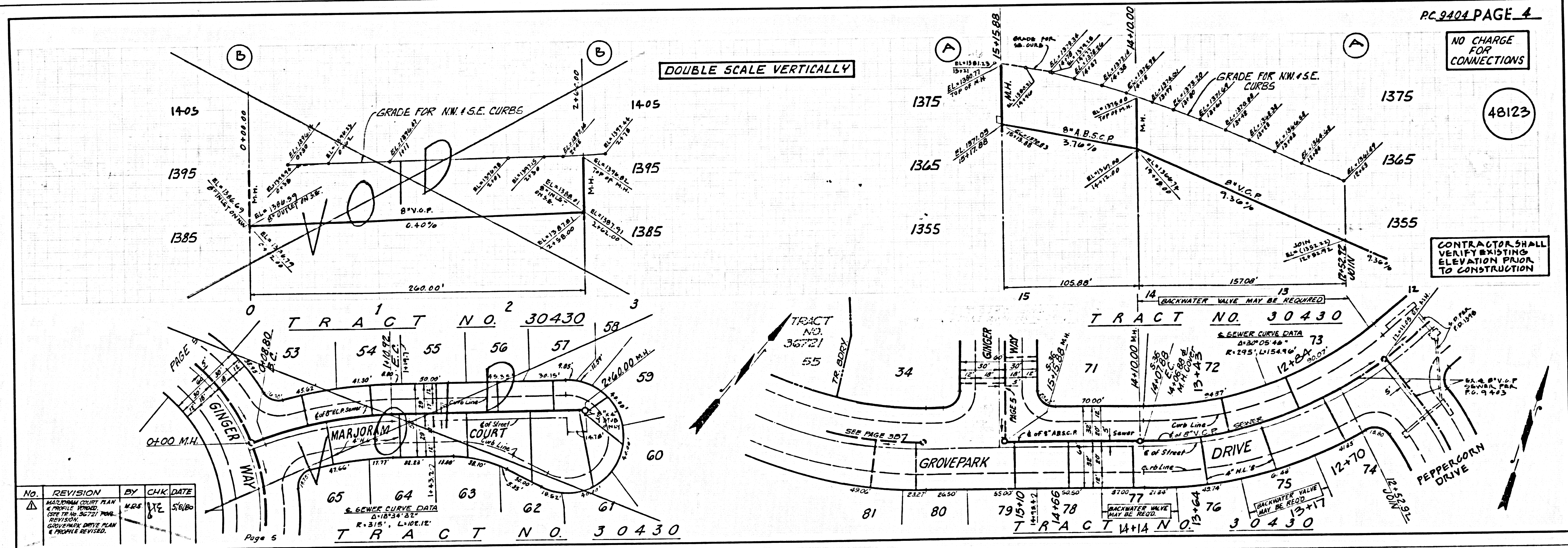
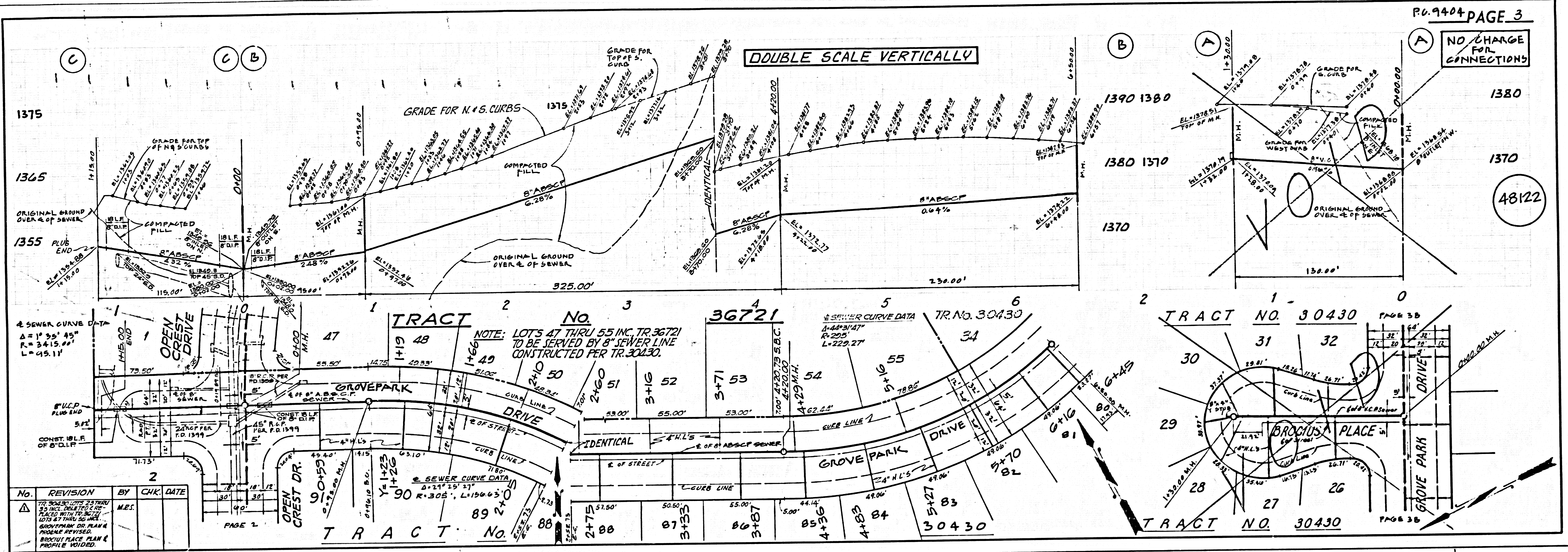
48121



CONTRACTOR SHALL VERIFY INVERT ELEVATIONS OF EXIST. M.H. PRIOR TO CONSTRUCTION

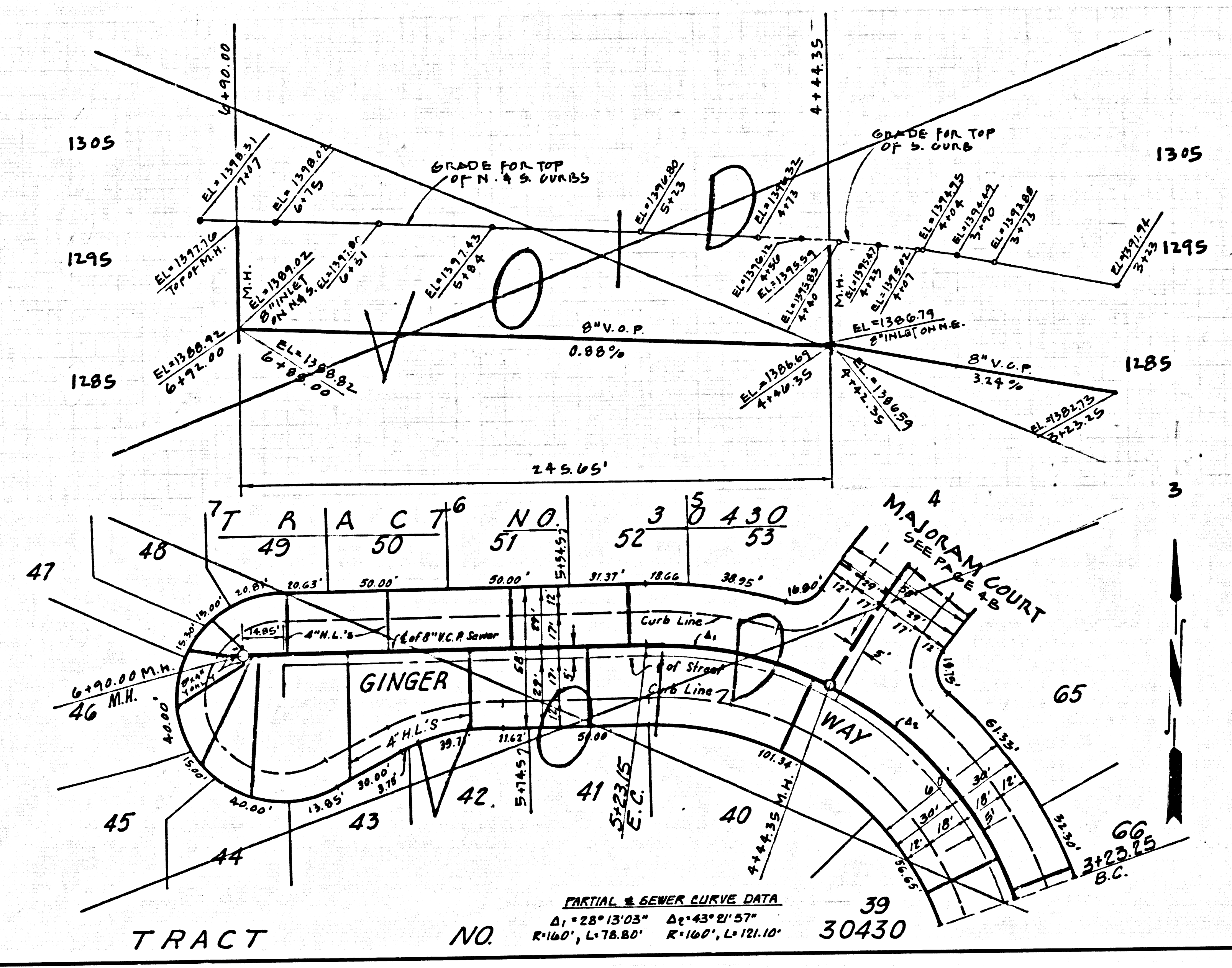
PORTION OF SEWER FROM STA. 24+25.00 TO STA. 25+43.89 TO BE BUILT PER TR. NO. 30430 CONTRACT.

No.	REVISION	BY	CHK	DATE
1	REVISED CONSTRUCTION PLAN AND PROFILE TO SHOW NEW LIMITS FOR TRACT NO. 30430	MRS. J.F.	FE	5/8/80

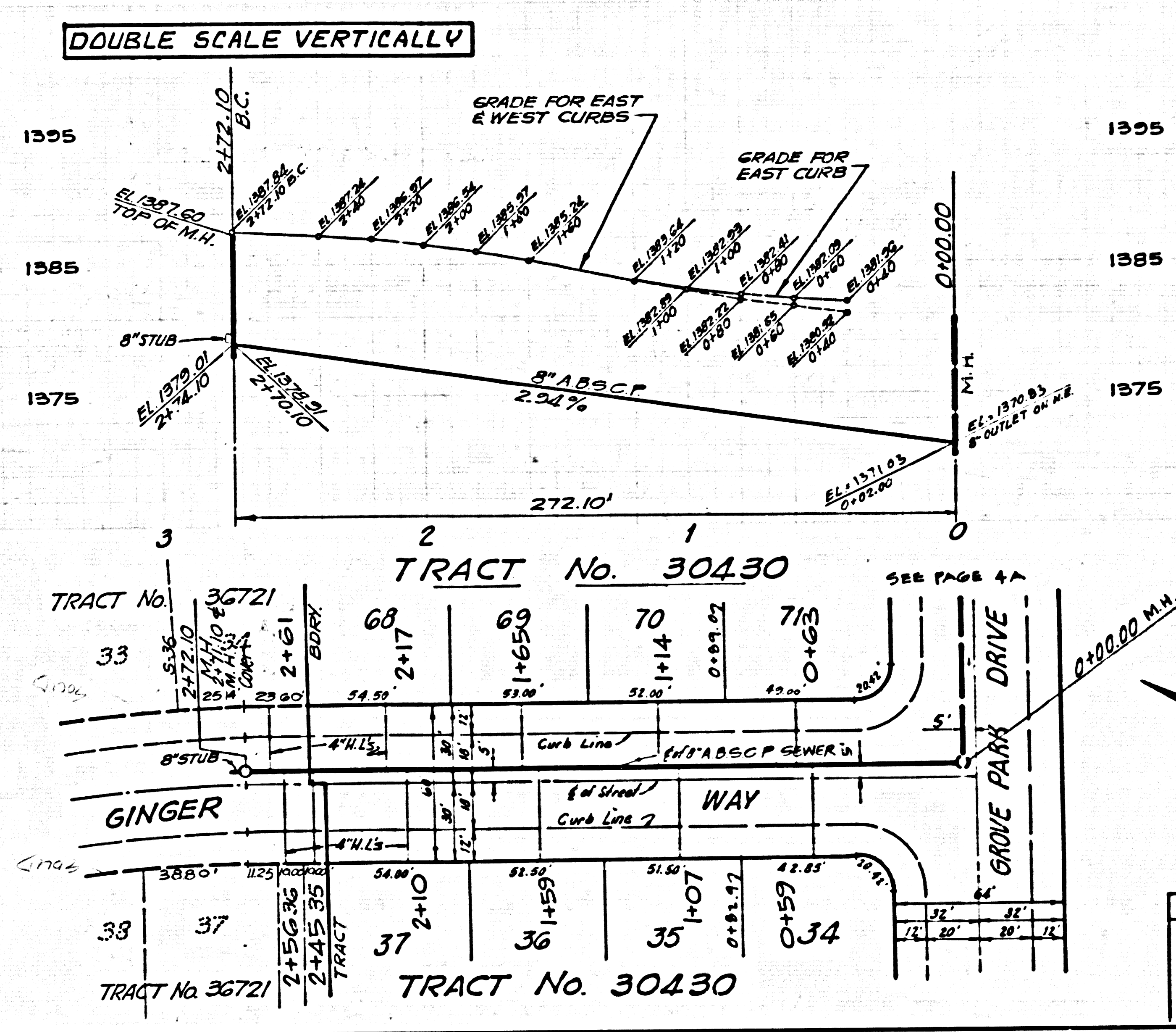


NO CHARGE FOR CONNECTIONS

48124



VERTICAL CURVE DATA  
 Δ = 25° 13' 03" ΔL = 43' 8" ΔI = 57"  
 R = 160' L = 78.80' R' = 100' L' = 121.10'



No.	REVISION	BY	CHK.	DATE
1	REVISED TO SHOW 10' MIN. COVER	M.P.S.	TE	5/18/80
2	OWNER HAS REVIEWED PLAN & APPROVED FOR CONSTRUCTION			