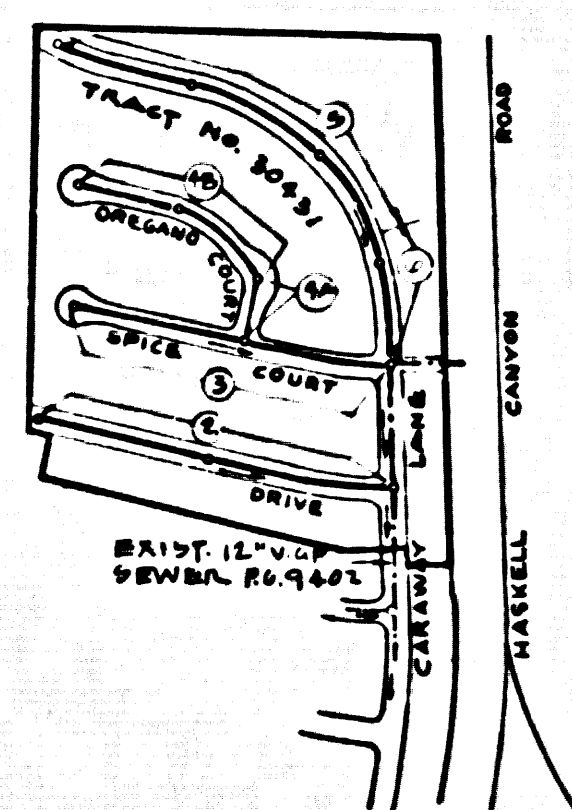


B.M. 01. 1740 ELEV. 1305.666
 U.S.G.S. Mon. 3/4 up 2071 S.E. 8 Douglas Cr. Rd
 under transmission line 7.01 Mi. N. by Susan
 Beth Way Mid. N-2 1929 20.18 377 up 277 W.
 NEWHALL QUAD. 19.7E

DOUBLE SCALE

REVISION 1: NOV. 14, 1977
 PAGE 3: REVISE PIPE GRADE FROM STA. 2+09.00
 TO STA. 6+44.00
 PAGE 4: REVISE PIPE GRADE FROM STA. 3+18.63
 TO STA. 5+18.00
 PAGE 5: REVISE PIPE GRADE FROM STA. 15+79.34
 TO STA. 33+45.00
 PAGE 6: REVISE PIPE GRADE FROM STA. 23+34.75
 TO STA. 25+79.34
 APPROVED: *Keith S. Spindler*
 OFFICE OF COUNTY ENGINEER
 DATE: 11/19/77



INDEX MAP
 P.C. 9405
 Scale 1"=400'

LOTS 84 THRU 90 INCLUSIVE ARE
 SERVED BY EXISTING PG. 9402.

ISSUE NO PERMITS UNTIL PG. 9402
 IS ACCEPTED FOR PUBLIC USE.

GENERAL NOTES:

1. REVISIONS ARE IN PENCIL ABOVE U.S.C. & G.S. 804 SEVER DUTY OF 1929
2. NO REVISIONS SHALL BE MADE IN THESE PLANS WITHOUT THE APPROVAL OF THE COUNTY ENGINEER
3. NO REPRESENTATIVE OF THE COUNTY ENGINEER WILL BE AT THE JOB AT ANY PORTION OF THE WORK
4. GRADES TO WHICH THIS IMPROVEMENT IS TO BE CONSTRUCTED ARE SHOWN ON PLANS AND INDICATE GRADE POINTS FOR TOP OF CURBS, CENTER LINE OF STREETS, OR CENTER LINE OF ALLEYS AS SHOWN BY CIRCLES ON PROFILES. AT ALL POINTS BETWEEN SAID INDICATED POINTS THE GRADE SHALL BE ESTABLISHED SO AS TO CONFORM TO A STRAIGHT LINE BETWEEN SAID DESIGNATED POINTS.
5. THE PRIVATE ENGINEER SHALL FURNISH THE COUNTY ENGINEER WITH GRADE SHEETS AND STATIONING FOR ALL HOUSE LATERALS AND "T" OR "Y" BRANCHES AND SHALL PROVIDE GRADES FOR THEM AT THESE PROPER LOCATIONS WITH STATIONING PLAINLY MARKED. ALL HOUSE LATERALS SHALL BE CONSTRUCTED IN A STRAIGHT ALIGNMENT AT RIGHT ANGLES FROM THE MAIN LINE SEWER EXCEPT AS SHOWN ON THE PLANS. HOUSE LATERALS FROM PROPERTY SHALL NOT HAVE AN ANGLE OF LESS THAN 45° WITH THE MAIN LINE SEWER. ANY CHANGE IN ALIGNMENT SHALL BE INDICATED IN WRITING BY THE PRIVATE ENGINEER.
6. THE PRIVATE ENGINEER SHALL FURNISH THE HOUSE LATERAL BENEATH AT THE PROPERTY LINE SHOWING THE TOP OF CURB REVISION FOR EACH HOUSE LATERAL ON THE CASE SHEET.
7. BEFORE WORK CAN BE STARTED, THE CONTRACTOR MUST OBTAIN A PERMIT TO EXCAVATE IN COUNTY STREETS FROM THE L.A. COUNTY ROAD DEPT. DISTRICT OFFICE NO. 10 AND PAY A FEE TO THE COUNTY ENGINEER. \$200 PER INCH OF DRAINAGE AREA. THE REGIONAL OFFICE TO COVER THE COST OF CONSTRUCTION INSPECTION AND RECORD PLANS.
8. IF WORK IS TO BE DONE IN A CITY HIGHWAY, A PERMIT MUST BE OBTAINED FROM THE STATE OF CALIFORNIA, DIVISION OF HIGHWAYS, THE SQUARE SPRING STREET, LOS ANGELES, CALIFORNIA.
9. APPROVAL OF THIS PLAN BY THE COUNTY OF LOS ANGELES DOES NOT CONSTITUTE A REPRESENTATION AS TO THE ACCURACY OF THE LOCATION OF OR THE EXISTENCE OR NON-EXISTENCE OF ANY UNDERGROUND SERVICE PIPE, OR STRUCTURE WITHIN THE LIMITS OF THE PROJECT. THIS NOTE APPLIES TO ALL PAGES.
10. REFER TO SECTION 100.41 OF THE STANDARD SPECIFICATIONS REGARDING SAFETY SIGNALS.
11. PRIOR TO THE ISSUANCE OF THE REBUILT GENERAL CONSTRUCTION PERMIT BY THE COUNTY ENGINEER, THE CONTRACTOR SHALL OBTAIN A PERMIT TO EXCAVATE FROM THE STATE OF CALIFORNIA, DIVISION OF INDUSTRIAL SAFETY.

CONSTRUCTION NOTES:

1. WORK SHALL BE CONSTRUCTED ACCORDING TO THE STANDARD SPECIFICATIONS FOR PUBLIC WORKS CONSTRUCTION 1977 EDITION AND COUNTY ENGINEER SPECIAL PROVISIONS FOR THE CONSTRUCTION OF SANITARY SEWERS SECTION 100.41, 100.42 AND SHALL BE PRODUCED ONLY IN THE PRESENCE OF THE COUNTY ENGINEER.
 2. THE CONTRACTOR SHALL NOTIFY THE D.S.D. BY TELEPHONE (213) 716-7183, AT LEAST TWENTY FOUR HOURS BEFORE STARTING ANY WORK UNDER THIS CONTRACT.
 3. HOUSE LATERALS TO BE CONSTRUCTED WITH INVERTS AT PROPERTY LINE A PERMIT SHOW CURB GRADE EXCEPT AS NOTED.
 4. USE OF THE MANHOLES AS A USE FOR CONNECTIONS TO ADJACENT PROPERTIES AS NOTED.
 5. ALL STRUCTURES SHALL BE BUILT IN ACCORDANCE WITH PG. 9402 OR PRECAST CONCRETE MANHOLES PER 3.2L EXCEPT AS NOTED.
 6. PROVIDE STAIRS ON THE PROPERTY LINE AT RIGHT ANGLES TO THE SEWER LINE AT THE CENTER LINE OF EACH MANHOLE.
 7. MANHOLES FOR USE IN UNDERGROUND RIGHTS OF WAY TO BE BUILT ABOVE FINISHED GRADE.
 8. WYTHED CLAY PIPE JOINTS SHALL BE TYPE "P", "P", OR "P" PER STANDARD SPECIFICATIONS SECTION 300.2.
 9. IF A POWER POLE IS WITHIN THREE FEET OF THE SEWER, THE SEWER SHALL BE ENCASED, PER 3.2L CASE 2, TWO FEET ON EACH SIDE FROM THE POINT OF INTERFERENCE.
 10. IF DURING THE COURSE OF CONSTRUCTION IT IS DETERMINED THAT THERE IS LESS THAN FOUR FEET OF COVER OVER THE TOP OF A MAIN LINE OR HOUSE LATERAL 4" C.P. SEWER WHICH IS NOT INDICATED ON THE PLAN, THE PIPE SHALL BE ENCASED PER 3.2L CASE 2, UNLESS OTHERWISE APPROVED BY THE COUNTY ENGINEER.
 11. ALL JOINTS BETWEEN CAST IRON PIPE AND WYTHED CLAY PIPE SHALL BE MADE WITH A RUBBER SLEEVE JOINT, TYPE "C" OR "D", FIFTEEN MINIMUM IF NECESSARY PER STANDARD SPECIFICATIONS, SECTION 300.2.
 12. REFER TO PG. 9402 FOR DETAILS OF SECTION 100.41 OF THE STANDARD SPECIFICATIONS AND SPECIAL PROVISIONS.
 13. REINFORCE ALL TRENCHES WITHIN PAVED AREAS TO MEET L.A. COUNTY ROAD DEPT. OR CALIFORNIA STATE HIGHWAY REQUIREMENTS IN ACCORDANCE WITH PERMITS.
 14. FULL COMPLIANCE WITH SECTION 300.15.8 OF THE SPECIAL PROVISIONS SHALL BE REQUIRED FOR BACKFILL IN STREETS. CERTIFICATION OF BACKFILL COMPLETION AND SAND REPLACEMENT BY A QUALIFIED REGISTERED GEOTECHNICAL ENGINEER SHALL BE PROVIDED BY THE CONTRACTOR PRIOR TO THE ISSUANCE OF A CERTIFICATE OF PAVING ACCEPTANCE.
- NO CONNECTION FOR THE DISPOSAL OF INDUSTRIAL WASTES SHALL BE MADE TO ANY SEWER MAIN OR TRENCH UNLESS A PERMIT FOR INDUSTRIAL WASTE DISPOSAL HAS BEEN ISSUED BY THE SANITATION DISTRICT FOR SAID CONNECTION.

PROFILE, ALIGNMENT AND GRADE OF
 SANITARY SEWERS PAGE 1
 TO BE CONSTRUCTED IN
 TRACT NO. 30431

PRIVATE CONTRACT NO. 9405

INDEX 213 5 117

W.S. 02L

3 SHEETS, 0 PAGES

47638

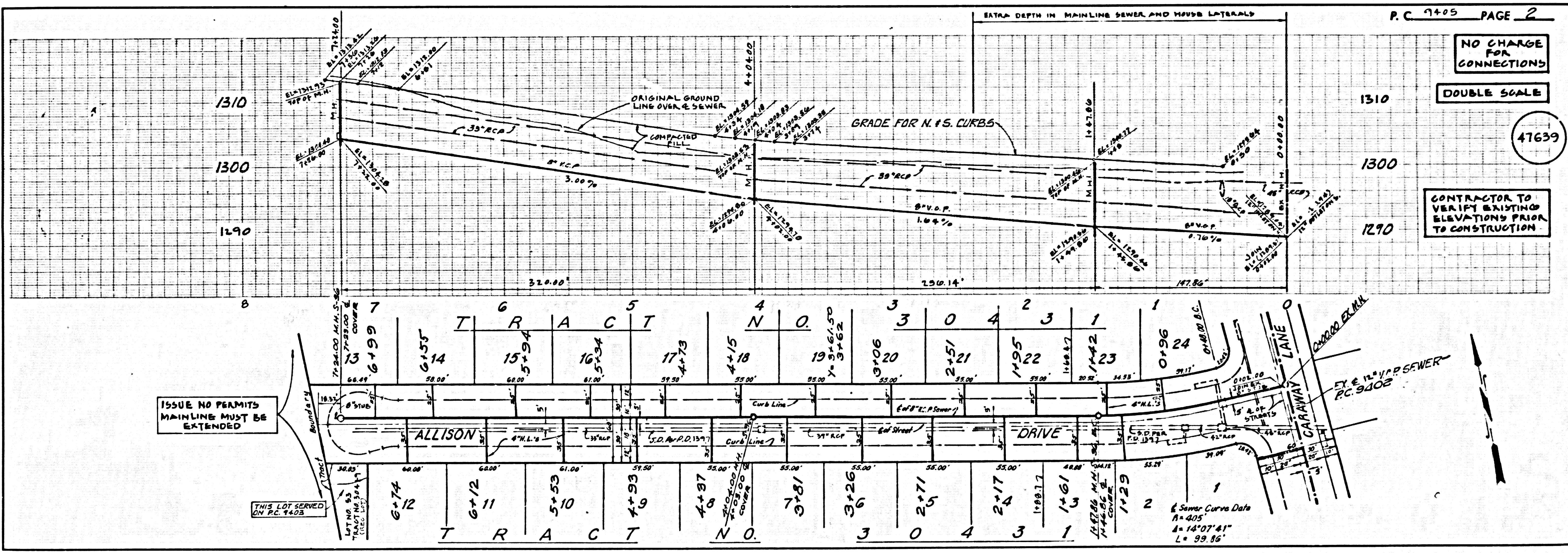
SCALE: 1"=8' SEPTEMBER, 1977

PREPARED BY THE OFFICES OF
 SPINDLER ENGINEERING CORPORATION
 13720 Riverside Dr. • Sherman Oaks, Calif. • 91423
 BY: *Keith S. Spindler*
 REG. C.E. No. 13188

THE FOLLOWING LISTED STANDARD PRICES ON FILE IN THE OFFICE OF THE COUNTY ENGINEER SHALL APPLY IN THE EVENT OF THE PROJECT:

ISSUES	0.00
STANDARD PUBLIC SAFETY REQUIREMENTS	0.00
PRICE MANHOLE	0.00
STANDARD MANHOLES PER	0.00
BRICKS FOR SEWER PER	0.00
CHANGING AND ENCLOSING	0.00
PIPE ON THE SUPPORT	0.00
ADJUSTABLE BRICKS PER	0.00
DOCKING MANHOLES PERMANENT COVER	0.00
NON-REINFORCED PRECAST CONCRETE MANHOLES	0.00

COUNTY OF LOS ANGELES, CALIFORNIA
 L.A. COUNTY ENGINEER JOHN D. PARKHURST, CHIEF ENGINEER
 APPROVED *Sam H. Miller* 11/17/77 APPROVED *Keith S. Spindler* 11/16/77
 CHECKED *R. A. H. Spindler* 11/17/77
 REG. C.E. No. 16782
 SANTA CLAYTON VALLEY BLDG. DIST. B.L. J.N. 0250.02



P.C. 9405 PAGE 2

NO CHARGE FOR CONNECTIONS

DOUBLE SCALE

47639

CONTRACTOR TO VERIFY EXISTING ELEVATIONS PRIOR TO CONSTRUCTION

