

CONSTRUCTED IN
PARCEL MAP NO. 8374

PRIVATE CONTRACT NO. 9411
INDEX 264 5117 & 264 5121
W.S. 62

2 SHEETS, 4 PAGES
SCALE: VERT. 1"=4' HORIZ. 1"=40'
July 5, 1977
PREPARED IN THE OFFICES OF VALCON, INC.

BY: *Valcon, Inc.*
REG. C.E. No. 13626

THE FOLLOWING LATEST REVISED STANDARD PLANS ON FILE IN THE OFFICE OF THE COUNTY ENGINEER SHALL APPLY IN THE CONSTRUCTION OF THIS PROJECT:

LEGEND	
MINIMUM PUBLIC SAFETY REQUIREMENTS	5-7
BRICK MANHOLE	5-8
STANDARD MANHOLE STEP	5-17
CRADLING AND ENCASING	5-27
WYE OR TE SUPPORT	5-28
ALLOWABLE TRENCH WIDTHS	5-33
LOCKING MANHOLE FRAME AND COVER	5-35
NON-REINFORCED PRECAST CONCRETE MANHOLE	5-36
JACKING PIPE	5-37

THE FOLLOWING COUNTY SANITATION DISTRICTS STANDARDS APPLY IN THE CONSTRUCTION OF THIS PROJECT:

STANDARD MANHOLE TYPE "A"	5-8-201
STANDARD MANHOLE TYPE "B"	5-8-206
STANDARD 24" MANHOLE FRAME & COVER	5-8-207
STANDARD MANHOLE STEP	5-8-209

COUNTY OF LOS ANGELES, CALIFORNIA

S. J. KADANCE ACTING COUNTY ENGINEER JOHN D. PARKHURST, CHIEF ENGINEER

APPROVED: *John D. Parkhurst* 1/18/78 APPROVED: *Frank R. Davis* 1/17/78
SPECIAL ENGINEER (S.E.) OFFICE ENGINEER

CHECKED: *R. L. Kopycky* 1/12/78
REG. C.E. No. 16742

SANTA CLARITA VALLEY BLDG. DIST. 82 J.N. 0250-05

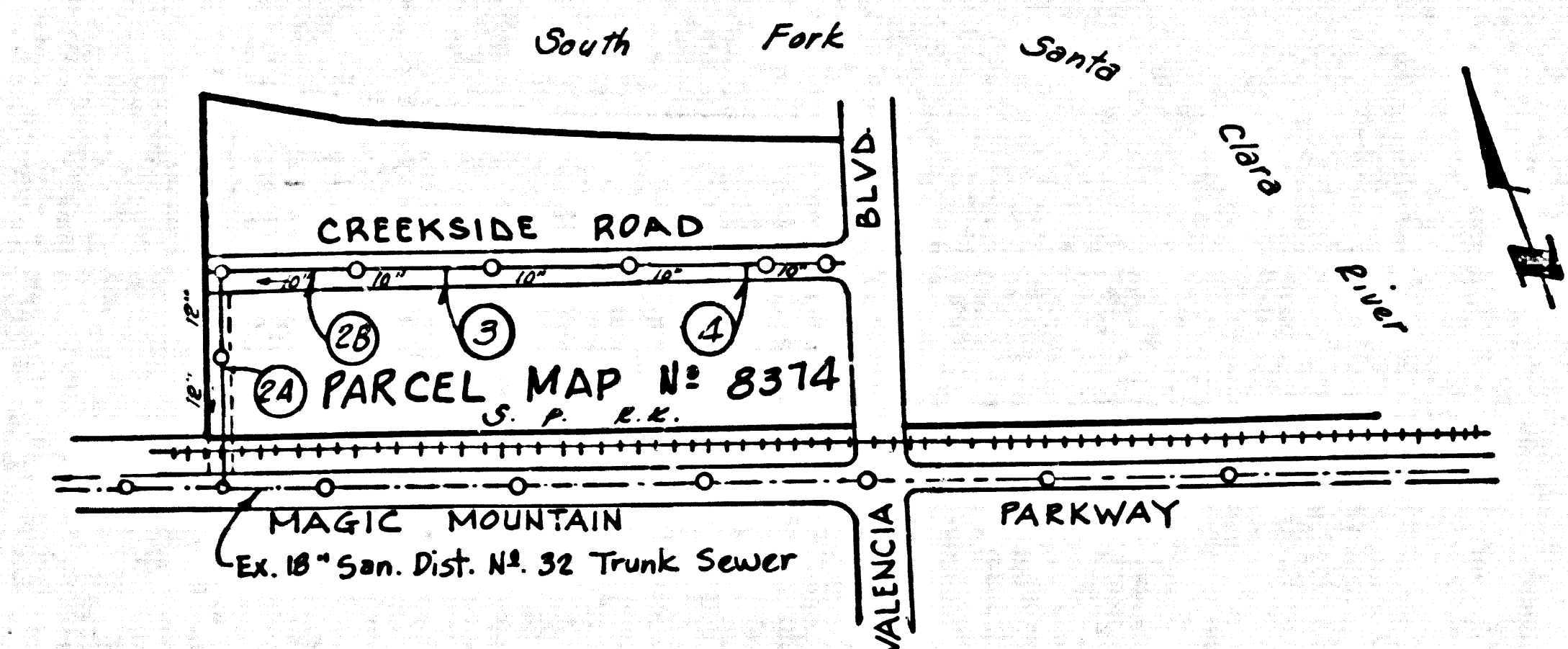
GENERAL NOTES:

- ELEVATIONS ARE IN FEET ABOVE U.S.C. & G.S. SEA LEVEL DATUM OF 1929.
- NO REVISIONS SHALL BE MADE IN THESE PLANS WITHOUT THE APPROVAL OF THE COUNTY ENGINEER.
- NO REPRESENTATIVE OF THE COUNTY ENGINEER WILL SURVEY OR LAY OUT ANY PORTION OF THE WORK.
- GRADES TO WHICH THIS IMPROVEMENT IS TO BE CONSTRUCTED ARE SHOWN ON PLANS AND PROFILES. GRADE POINTS FOR TOP OF CURBS, CENTER LINE OF STREETS, OR CENTER LINE OF ALLEYS ARE SHOWN BY CIRCLES ON PROF. P.L. AT ALL POINTS BETWEEN DESIGNATED POINTS. THE GRADE SHALL BE ESTABLISHED SO AS TO CONFORM TO A STRAIGHT LINE DRAWN BETWEEN SAID DESIGNATED POINTS.
- THE PRIVATE ENGINEER SHALL FURNISH THE COUNTY ENGINEER WITH GRADE SHEETS AND STATIONING FOR ALL HOUSE LATERALS AND "T" OR "Y" BRANCHES AND SHALL PROVIDE STAKES FOR THEM AT THEIR PROPER LOCATIONS WITH STATIONING PLAINLY MARKED. ALL HOUSE LATERALS SHALL BE CONSTRUCTED IN A STRAIGHT ALIGNMENT AT RIGHT ANGLES FROM THE MAIN LINE SEWER EXCEPT AS SHOWN ON THE PLANS. HOUSE LATERALS FROM CHIMNEYS SHALL NOT HAVE AN ANGLE OF LESS THAN 45° WITH THE MAIN LINE SEWER. ANY CHANGE IN ALIGNMENT SHALL BE REQUESTED IN WRITING BY THE PRIVATE ENGINEER.
- THE PRIVATE ENGINEER SHALL FURNISH THE HOUSE LATERAL DEPTH AT THE PROPERTY LINE BELOW THE TOP OF CURB ELEVATION FOR EACH HOUSE LATERAL ON THE GRADE SHEET.
- BEFORE WORK CAN BE STARTED, THE CONTRACTOR MUST OBTAIN A PERMIT TO EXCAVATE IN COUNTY STREETS FROM THE L.A. COUNTY ROAD DEPT., DISTRICT OFFICE NO. 4, AND PAY A FEE TO THE COUNTY ENGINEER, SANTA CLARITA VALLEY REGIONAL OFFICE, TO COVER THE COST OF CONSTRUCTION INSPECTION AND RECORD PLANS.
- IF WORK IS TO BE DONE IN A STATE HIGHWAY, A PERMIT MUST BE OBTAINED FROM THE STATE OF CALIFORNIA, DIVISION OF HIGHWAYS, 120 SOUTH SPRING STREET, LOS ANGELES, CALIFORNIA.
- APPROVAL OF THIS PLAN BY THE COUNTY OF LOS ANGELES DOES NOT CONSTITUTE A REPRESENTATION AS TO THE ACCURACY OF THE LOCATION OF OR THE EXISTENCE OR NON-EXISTENCE OF ANY UNDERGROUND UTILITY PIPE, OR STRUCTURE WITHIN THE LIMITS OF THIS PROJECT. THIS NOTE APPLIES TO ALL PAGES.
- REFER TO SECTION 7-10.4.1 OF THE STANDARD SPECIFICATIONS REGARDING SAFETY ORDERS.
- "PRIOR TO THE ISSUANCE OF THE REQUIRED SEWER CONSTRUCTION PERMIT BY THE COUNTY ENGINEER, THE CONTRACTOR SHALL OBTAIN A PERMIT TO EXCAVATE FROM THE STATE OF CALIFORNIA, DIVISION OF INDUSTRIAL SAFETY AND SUBMIT A COPY OF TUNNEL CLASSIFICATION FROM THE DIVISION OF INDUSTRIAL SAFETY FOR THE TUNNEL WORK SPECIFIED ON THE PROJECT.

CONSTRUCTION NOTES:

- WORK SHALL BE CONSTRUCTED ACCORDING TO THE STANDARD SPECIFICATIONS FOR PUBLIC WORKS CONSTRUCTION 1976 EDITION DEPT. 61, 1976 AND SHALL BE PROSECUTED ONLY IN THE PRESENCE OF THE COUNTY ENGINEER.
- THE CONTRACTOR SHALL NOTIFY THE DESIGN DIVISION BY TELEPHONE, (213) 974-7285, AT LEAST TWENTY-FOUR HOURS BEFORE STARTING ANY WORK UNDER THIS CONTRACT.
- HOUSE LATERALS TO BE CONSTRUCTED WITH INVERTS AT PROPERTY LINE 4 FEET BELOW CURB GRADE EXCEPT AS NOTED.
- WYE OR TE BRANCHES MAY BE USED FOR CONNECTIONS TO MAINLINE SEWERS EXCEPT AS NOTED.
- ALL STRUCTURES SHALL BE EITHER BRICK MANHOLES PER 5-8 OR PRECAST CONCRETE MANHOLES PER 5-36, EXCEPT AS NOTED.
- PROVIDE STAKES ON THE PROPERTY LINE OR PROPERTY LINES PRODUCED AT RIGHT ANGLES TO THE SEWER LINE AT THE CENTER LINE OF EACH MANHOLE.
- MANHOLE TOPS IN UNIMPROVED RIGHTS OF WAY TO BE SIX INCHES ABOVE FINISHED GRADE.
- WITHELD CLAY PIPE JOINTS SHALL BE TYPE "B", "C", OR "D" PER STANDARD SPECIFICATIONS SECTION 200-2.
- IF A POWER POLE IS WITHIN THREE FEET OF THE SEWER, THE SEWER SHALL BE ENCASED, PER 5-23, CASE II, TWO FEET ON EACH SIDE FROM THE POINT OF INTERFERENCE.
- IF DURING THE COURSE OF CONSTRUCTION IT IS DETERMINED THAT THERE IS LESS THAN FOUR FEET OF COVER OVER THE TOP OF A MAIN LINE OR HOUSE LATERAL V.C.P. SEWER WHICH IS NOT INDICATED ON THE PLANS, THE PIPE SHALL BE ENCASED PER 5-23, CASE II UNLESS OTHERWISE APPROVED BY THE COUNTY ENGINEER.
- ALL JOINTS BETWEEN CAST IRON PIPE AND WITHELD CLAY PIPE SHALL BE MADE WITH A RUBBER SLEEVE JOINT, TYPE "C" OR "D", WITH RUBBERING IF NECESSARY PER STANDARD SPECIFICATIONS, SECTION 200-2.
- SEWERS TO BE TESTED FOR LEAKAGE PER SECTION 200-1.4 OF THE STANDARD SPECIFICATIONS AND SPECIAL PROVISIONS.
- RESURFACE ALL TRENCHES WITHIN PAVED AREAS TO MEET L.A. COUNTY ROAD DEPT. OR CALIFORNIA STATE HIGHWAY REQUIREMENTS IN ACCORDANCE WITH PERMITS.
- FULL COMPLIANCE WITH SECTION 200-1.3 OF THE SPECIAL PROVISIONS WILL BE REQUIRED FOR BACKFILL IN STREETS. CERTIFICATION OF BACKFILL COMPACTION AND SAND EQUIVALENTS BY A QUALIFIED, REGISTERED TESTING LABORATORY SHALL BE PROVIDED BY THE PERMITTEE PRIOR TO THE ISSUANCE OF A CERTIFICATE OF PARTIAL ACCEPTANCE.

B.M. BL 2895 ELEV. 1150.184
RDBM Tag w CB Valencia Boulevard
6 FT. S. BCR @ S.W. Cor. Magic Mountain
Parkway and Valencia Boulevard 97 FT.
S + 42 FT. W C/L Int.
NEWHALL QUAD. 19 72

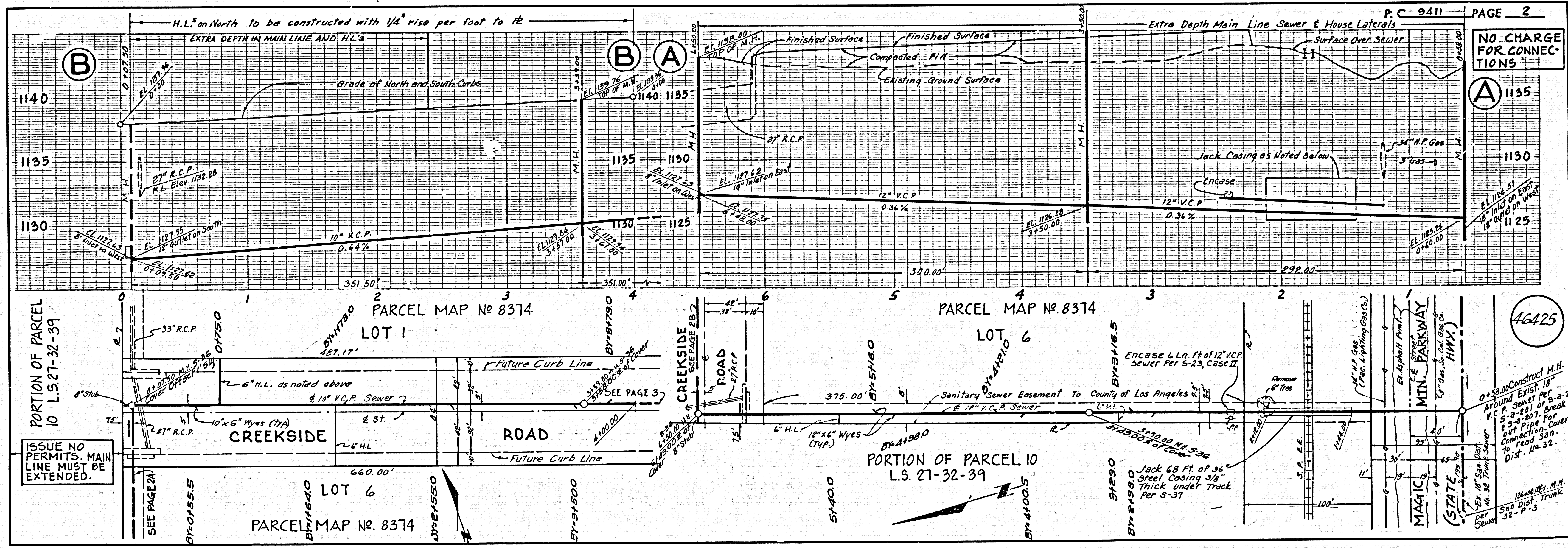


INDEX MAP
SCALE: 1"=500'
P.C. 9411

NOTE: NUMBERS IN CIRCLES
INDICATE PAGE NUMBERS.

NO CONNECTION FOR THE DISPOSAL OF INDUSTRIAL WASTES
SHALL BE MADE TO SEWERS SHOWN ON THESE DRAWINGS UNTIL
A PERMIT FOR INDUSTRIAL WASTE WATER DISCHARGE HAS BEEN
ISSUED BY THE SANITATION DISTRICTS FOR SAID CONNECTION.

BEFORE BREAKING INTO OR CONSTRUCTION ON A COUNTY
SANITATION DISTRICT SEWER AND PRIOR TO FINAL ACCEPTANCE
OF THE PROJECT SANITATION DISTRICT INSPECTOR SHALL BE
NOTIFIED BY PHONE 362-8695, SO THAT REQUIRED INSPECTION
CAN BE MADE.



NO CHARGE
FOR CONNECTIONS

ISSUE NO PERMITS. MAIN
LINE MUST BE
EXTENDED.

46425

0+58.00 Construct M.H.
Around Exist. 18"
V.C.P. Sewer Per
5-8-201 or Break
5-8-207.
6\"/>

