

B.M. City of Los Angeles ELEV. 815.259 (1970 ADJ.)
 Standard Trav. Mon. 9-D-21 of
 Vanowen St. Fallbrook Ave.
 City of Los Angeles 8M #06-04320

GENERAL NOTES (CONT.)
 D. CONTRACTOR SHALL NOTIFY LOS ANGELES FOR INSPECTION
 AT 7:02-0125, EST. 5:55, 48 HOURS BEFORE BEGINNING
 CONSTRUCTION WITHIN CITY.

TRAFFIC LANE REQUIREMENTS:

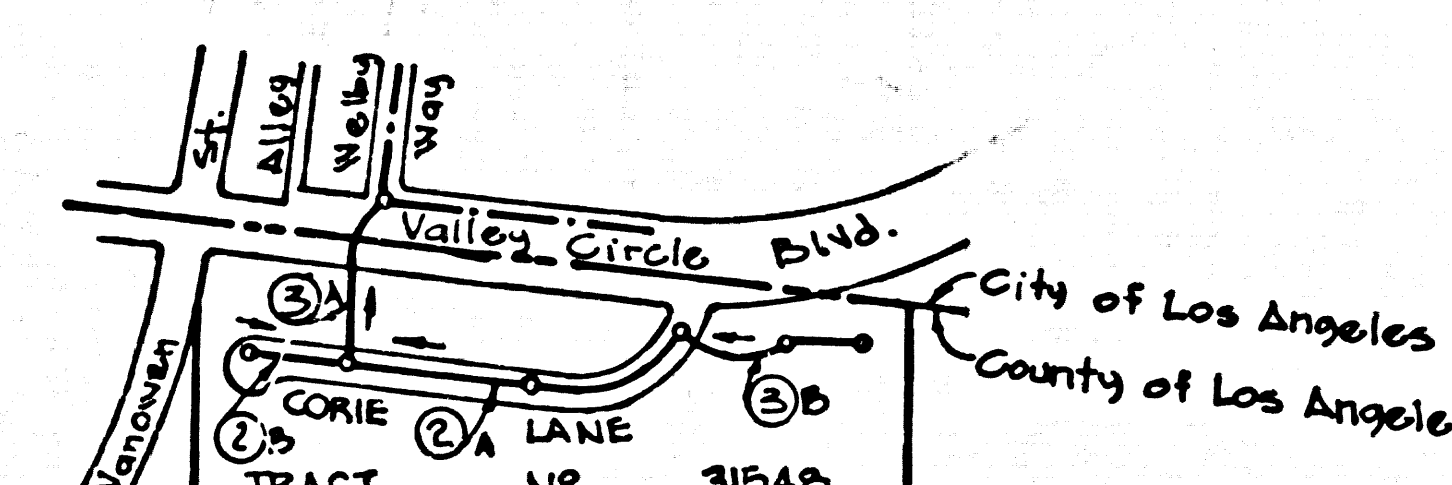
VALLEY CIRCLE BLVD.-NO INTERFERENCE WITH EXISTING STRIPED TRAFFIC LANES
 BETWEEN 4:30 PM AND 8:30 AM.
 ONE DELINEATED THRU TRAFFIC LANE IN EACH
 DIRECTION AT ALL OTHER TIMES. DEVIATIONS FROM THESE
 REQUIREMENTS MUST BE APPROVED BY THE WEST VALLEY
 DISTRICT TRAFFIC ENGINEER.

TO BE CONSTRUCTED IN

Tract No. 31548
PRIVATE CONTRACT NO. 9417

W.S. 60
 2 SHEETS, 3 PAGES
 SCALE: VERT. 1"=0' AUGUST, 1977
 HORIZ. 1"=40'
 PREPARED IN THE OFFICES OF
L.A. CO. ENGINEERING
 17430 So. Prairie Ave. Torrance, California 90504
 BY: Michael A. Miller
 REG. C. E. No. 22504

47002



NOTE: NUMBERS IN CIRCLES
 INDICATE PAGE NUMBER.
Index Map
P.C. 9417
 Scale: 1"=500'

REVISIONS

1	REVISED GRADES ON PAGE 3 A 87A, PAGE 2 & 2-3386 DUE TO INTERFERENCE WITH 30" WATER MAIN
2	REVISION BY <u>Michael A. Miller</u> REG. NO. 22504 APPROVED <u>Paul D. Smith</u> DATE 2/21/79
3	REVISED GRADES ON PAGES 2 & 3 DUE TO REVISED STREET GRADES
4	REVISION BY <u>Michael A. Miller</u> REG. NO. 22504 APPROVED <u>Paul D. Smith</u> DATE 6/16/77

APPROVED... JAN... 27... 1978
 DEPT. OF TRAFFIC

CITY OF LOS ANGELES
 DIVISION ENGINEER
 DEPUTY ENGINEER
 APPROVED Donald S. Tilsman
 CITY ENGINEER

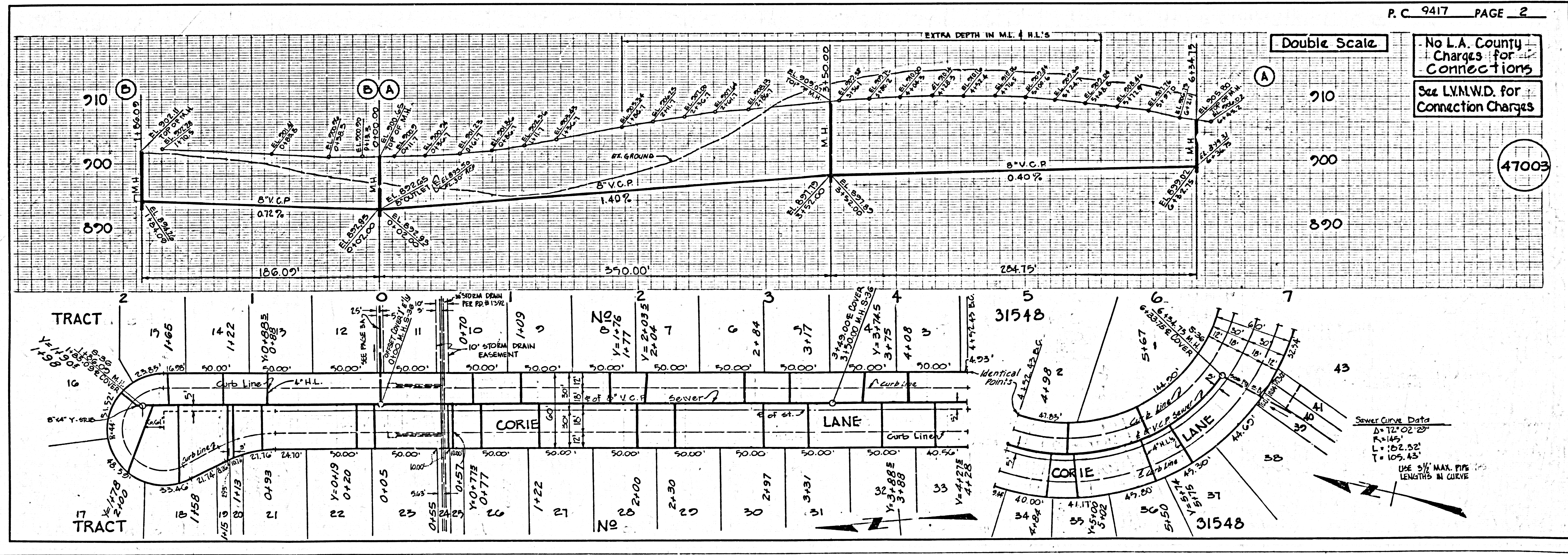
- GENERAL NOTES:**
- ELEVATIONS ARE IN FEET ABOVE U.S.C. & G.S. SEA LEVEL DATUM OF 1929.
 - NO REVISIONS SHALL BE MADE IN THESE PLANS WITHOUT THE APPROVAL OF THE COUNTY ENGINEER.
 - NO REPRESENTATIVE OF THE COUNTY ENGINEER WILL SURVEY OR LAY OUT ANY PORTION OF THE WORK.
 - GRADES TO WHICH THIS IMPROVEMENT IS TO BE CONSTRUCTED ARE SHOWN ON PLANS AND PROFILES. GRADE POINTS FOR TOP OF CURVE, CENTER LINE OF STREETS OR CENTER LINE OF ALLEYS ARE SHOWN BY CIRCLES ON PROFILES AT ALL POINTS BETWEEN DESIGNATED POINTS. THE GRADE SHALL BE ESTABLISHED SO AS TO CONFORM TO A STRAIGHT LINE DRAWN BETWEEN SAID DESIGNATED POINTS.
 - THE PRIVATE ENGINEER SHALL FURNISH THE COUNTY ENGINEER WITH GRADE SHEETS AND STATIONING FOR ALL HOUSE LATERALS AND "T" OR "Y" BRANCHES AND SHALL PROVIDE STAKES FOR THEM AT THEIR PROPER LOCATIONS WITH STATIONING PLAINLY MARKED. ALL HOUSE LATERALS SHALL BE CONSTRUCTED IN A STRAIGHT ALIGNMENT AT RIGHT ANGLES FROM THE MAIN LINE SEWER EXCEPT AS SHOWN ON THE PLANS. HOUSE LATERALS FROM CHIMNEYS SHALL NOT HAVE AN ANGLE OF LESS THAN 45° WITH THE MAIN LINE SEWER. ANY CHANGE HEREIN SHALL BE REQUESTED IN WRITING BY THE PRIVATE ENGINEER.
 - THE PRIVATE ENGINEER SHALL FURNISH THE HOUSE LATERAL DEPTH AT THE PROPERTY LINE BELOW THE TOP OF CURB ELEVATION FOR EACH HOUSE LATERAL ON THE GRADE SHEET.
 - BEFORE WORK CAN BE STARTED, THE CONTRACTOR MUST OBTAIN A PERMIT TO EXCAVATE IN COUNTY STREETS FROM THE L.A. COUNTY ROAD DEPT., DISTRICT OFFICE NO. 3, AND PAY A FEE TO THE COUNTY ENGINEER, AT THE MAIN BUILDING REGIONAL OFFICE, TO COVER THE COST OF CONSTRUCTION INSPECTION AND RECORD PLANS.
 - IF WORK IS TO BE DONE IN A STATE HIGHWAY, A PERMIT MUST BE OBTAINED FROM THE STATE OF CALIFORNIA, DIVISION OF HIGHWAYS, 130 SOUTH SPRING STREET, LOS ANGELES, CALIFORNIA.
 - APPROVAL OF THIS PLAN BY THE COUNTY OF LOS ANGELES DOES NOT CONSTITUTE A REPRESENTATION AS TO THE ACCURACY OF THE LOCATION OF OR THE EXISTENCE OR NON-EXISTENCE OF ANY UNDERGROUND UTILITY PIPE, OR STRUCTURE WITHIN THE LIMITS OF THIS PROJECT. THIS NOTE APPLIES TO ALL PAGES.
 - REFER TO SECTION 7-10.41 OF THE STANDARD SPECIFICATIONS, REGARDING SAFETY ORDERS.
 - BEFORE THE ISSUANCE OF THE REQUIRED SEWER CONSTRUCTION PERMIT BY THE COUNTY ENGINEER THE CONTRACTOR SHALL OBTAIN A PERMIT TO EXCAVATE FROM THE STATE OF CALIFORNIA DIVISION OF INDUSTRIAL SAFETY.
 - THE UNDERGROUND UTILITY COMPANIES IN THE LIMIT OF THIS PROJECT ARE AS FOLLOWS:
 LAS VIRGENES MUNICIPAL WATER DISTRICT
 SOUTHERN CALIFORNIA GAS COMPANY
 CITY OF LOS ANGELES DEPARTMENT OF WATER AND POWER
 PACIFIC TELEPHONE AND TELEGRAPH COMPANY

- CONSTRUCTION NOTES:**
- WORK SHALL BE CONSTRUCTED ACCORDING TO THE STANDARD SPECIFICATIONS FOR PUBLIC WORKS CONSTRUCTION (1976 EDITION) AND COUNTY ENGINEER SPECIAL PROVISIONS FOR THE CONSTRUCTION OF SANITARY SEWERS DATED SEPT. 21, 1976 AND SHALL BE PROSECUTED ONLY IN THE PRESENCE OF THE COUNTY ENGINEER.
 - THE CONTRACTOR SHALL NOTIFY THE DISTRICT ENGINEER BY TELEPHONE, (213) 924-7283, AT LEAST TWENTY-FOUR HOURS BEFORE STARTING ANY WORK UNDER THIS CONTRACT.
 - HOUSE LATERALS TO BE CONSTRUCTED WITH INVERTS AT PROPERTY LINE 6 FEET BELOW CURB GRADE EXCEPT AS NOTED.
 - WYE OR TEE BRANCHES MAY BE USED FOR CONNECTIONS TO MAINLINE SEWERS EXCEPT AS NOTED.
 - ALL STRUCTURES SHALL BE EITHER BRICK MANHOLES PER S-3 OR PRECAST CONCRETE MANHOLES PER S-34, EXCEPT AS NOTED.
 - PROVIDE STAKES ON THE PROPERTY LINE OR PROPERTY LINES PRODUCED AT RIGHT ANGLES TO THE SEWER LINE AT THE CENTER LINE OF EACH MANHOLE.
 - MANHOLE TOPS IN UNIMPROVED RIGHTS OF WAY TO BE SIX INCHES ABOVE FINISHED GRADE.
 - VITRIFIED CLAY PIPE JOINTS SHALL BE TYPE "B", "F", OR "G" PER STANDARD SPECIFICATIONS SECTION 200-2.
 - IF A POWER POLE IS WITHIN THREE FEET OF THE SEWER, THE SEWER SHALL BE ENCASED, PER S-23, CASE II, TWO FEET ON EACH SIDE FROM THE POINT OF INTERFERENCE.
 - IF DURING THE COURSE OF CONSTRUCTION IT IS DETERMINED THAT THERE IS LESS THAN FOUR FEET OF COVER OVER THE TOP OF A MAIN LINE OR HOUSE LATERAL V.C.P. SEWER WHICH IS NOT INDICATED ON THE PLANS, THE PIPE SHALL BE ENCASED PER S-23, CASE II UNLESS OTHERWISE APPROVED BY THE COUNTY ENGINEER.
 - ALL JOINTS BETWEEN CAST IRON PIPE AND VITRIFIED CLAY PIPE SHALL BE MADE WITH A RUBBER SLEEVE JOINT, TYPE "C" OR "D", WITH BUSHING IF NECESSARY PER STANDARD SPECIFICATIONS AND SPECIAL PROVISIONS.
 - SEWERS TO BE IN PLACE UNDER PAVED AREAS TO MEET L.A. COUNTY ROAD DEPT. OR CALIFORNIA STATE HIGHWAY REQUIREMENTS IN ACCORDANCE WITH PERMITS.
 - FULL COMPLIANCE WITH SECTION 200-1.8.5 OF THE SPECIAL PROVISIONS WILL BE REQUIRED FOR BACKFILL IN STREETS. CERTIFICATION OF BACKFILL COMPACTION AND SAND EQUIVALENTS BY A QUALIFIED, REGISTERED TESTING LABORATORY SHALL BE PROVIDED BY THE PERMITTEE PRIOR TO THE ISSUANCE OF A CERTIFICATE OF PARTIAL ACCEPTANCE.

THE FOLLOWING LATEST REVISED STANDARD PLANS ON FILE IN THE OFFICE OF THE COUNTY ENGINEER SHALL APPLY IN THE CONSTRUCTION OF THIS PROJECT.

LEGEND	S-1
MINIMUM PUBLIC SAFETY REQUIREMENTS	S-2
BRICK MANHOLES	S-3
STANDARD MANHOLE SETS	S-7
BEDDING FOR SEWER PIPE	S-21
CRADLING AND ENCASEMENT	S-23
WYE OR TEE SUPPORT	S-26
ALLOWABLE TRENCH WIDTHS	S-28
LOCKING MANHOLE FRAMES AND COVERS	S-36
NON-REINFORCED PRECAST CONCRETE MANHOLE	S-38
CITY OF LOS ANGELES STANDARDS	
PIPE LAYING IN TRENCHES	S-251-1
NOTICE TO CONTRACTORS COMPREHENSIVE	S-610-B

COUNTY OF LOS ANGELES, CALIFORNIA
 COUNTY ENGINEER
 LAS VIRGENES MUNICIPAL WATER DISTRICT
 GENERAL MANAGER, CHIEF ENGINEER



No L.A. County Charges for Connections
See L.V.M.W.D. for Connection Charges

47004

