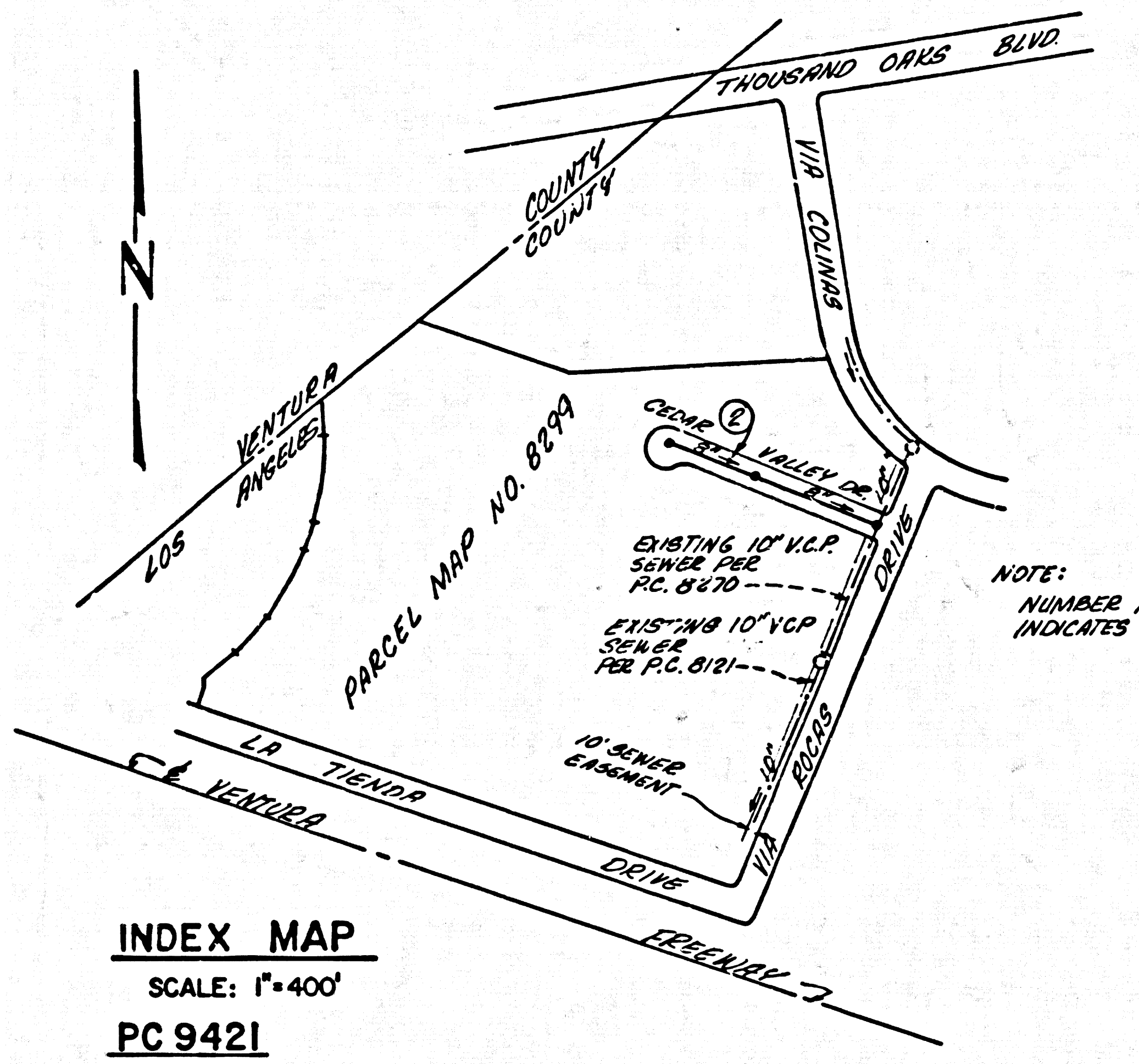


B.M. BY 7679 ELEV. 992.005
 RD B.M. TAG O.E. SLY B.C.R. AT
 S.W. LY COR. VIA ROCAS 18' WLY
 AND 68' SLY. C/L INT. VIA COLINAS
 MALIBU QUAD. 19.72



INDEX MAP
 SCALE: 1"=400'
 PC 9421

REVISION # 1
 LOWER CURB GRADES FROM
 STATION. 0+00 TO 6+12.32
 APPROVED BY [Signature]
 DATE 5/11/76

GENERAL NOTES:

- ELEVATIONS ARE IN FEET ABOVE U.S.C. & G.S. SEA LEVEL DATUM OF 1929.
- NO REVISIONS SHALL BE MADE IN THESE PLANS WITHOUT THE APPROVAL OF THE COUNTY ENGINEER.
- NO REPRESENTATIVE OF THE COUNTY ENGINEER WILL SURVEY OR LAY OUT ANY PORTION OF THE WORK.
- GRADES TO WHICH THIS IMPROVEMENT IS TO BE CONSTRUCTED ARE SHOWN ON PLANS AND PROFILES. GRADE POINTS FOR TOP OF CURBS, CENTER LINE OF STREETS, OR CENTER LINE OF ALLEYS ARE SHOWN BY CIRCLES ON PROFILES. AT ALL POINTS BETWEEN DESIGNATED POINTS THE GRADE SHALL BE ESTABLISHED SO AS TO CONFORM TO A STRAIGHT LINE DRAWN BETWEEN SAID DESIGNATED POINTS.
- THE PRIVATE ENGINEER SHALL FURNISH THE COUNTY ENGINEER WITH GRADE SHEETS AND STATIONING FOR ALL HOUSE LATERALS AND "T" OR "Y" BRANCHES AND SHALL PROVIDE STAKES FOR THEM AT THEIR PROPER LOCATIONS WITH STATIONING PLAINLY MARKED. ALL HOUSE LATERALS SHALL BE CONSTRUCTED IN A STRAIGHT ALIGNMENT AT RIGHT ANGLES FROM THE MAIN LINE SEWER EXCEPT AS SHOWN ON THE PLANS. HOUSE LATERALS FROM CHIMNEYS SHALL NOT HAVE AN ANGLE OF LESS THAN 45° WITH THE MAIN LINE SEWER. ANY CHANGE IN ALIGNMENT SHALL BE REQUESTED IN WRITING BY THE PRIVATE ENGINEER.
- THE PRIVATE ENGINEER SHALL FURNISH THE HOUSE LATERAL DEPTH AT THE PROPERTY LINE BELOW THE TOP OF CURB ELEVATION FOR EACH HOUSE LATERAL ON THE GRADE SHEET.
- BEFORE WORK CAN BE STARTED, THE CONTRACTOR MUST OBTAIN A PERMIT TO EXCAVATE IN COUNTY STREETS FROM THE L.A. COUNTY ROAD DEPT., DISTRICT OFFICE NO. 3, AND PAY A FEE TO THE COUNTY ENGINEER, AT THE MALIBU REGIONAL OFFICE, TO COVER THE COST OF CONSTRUCTION INSPECTION AND RECORD PLANS.
- IF WORK IS TO BE DONE ON A STATE HIGHWAY, A PERMIT MUST BE OBTAINED FROM THE STATE OF CALIFORNIA, DIVISION OF HIGHWAYS, 120 SOUTH SPRING STREET, LOS ANGELES, CALIFORNIA.
- APPROVAL OF THIS PLAN BY THE COUNTY OF LOS ANGELES DOES NOT CONSTITUTE A REPRESENTATION AS TO THE ACCURACY OF THE LOCATION OF OR THE EXISTENCE OR NON-EXISTENCE OF ANY UNDERGROUND UTILITY PIPE, OR STRUCTURE WITHIN THE LIMITS OF THIS PROJECT. THIS NOTE APPLIES TO ALL PAGES.
- REFER TO SECTION 114.01 OF THE STANDARD SPECIFICATIONS, REGARDING SAFETY ORDERS.
- THE UNDERGROUND UTILITY COMPANIES WITHIN THE LIMIT OF THIS PROJECT ARE AS FOLLOWS:
 - LOS VIRGENES MUNICIPAL WATER DISTRICT
- BEFORE THE ISSUANCE OF THE REQUIRED SEWER CONSTRUCTION PERMIT BY THE COUNTY ENGINEER THE CONTRACTOR SHALL OBTAIN A PERMIT TO EXCAVATE FROM THE STATE OF CALIFORNIA DIVISION OF INDUSTRIAL SAFETY.

THE FOLLOWING LATEST REVISED STANDARD PLANS ON FILE IN THE OFFICE OF THE COUNTY ENGINEER SHALL APPLY IN THE CONSTRUCTION OF THIS PROJECT.

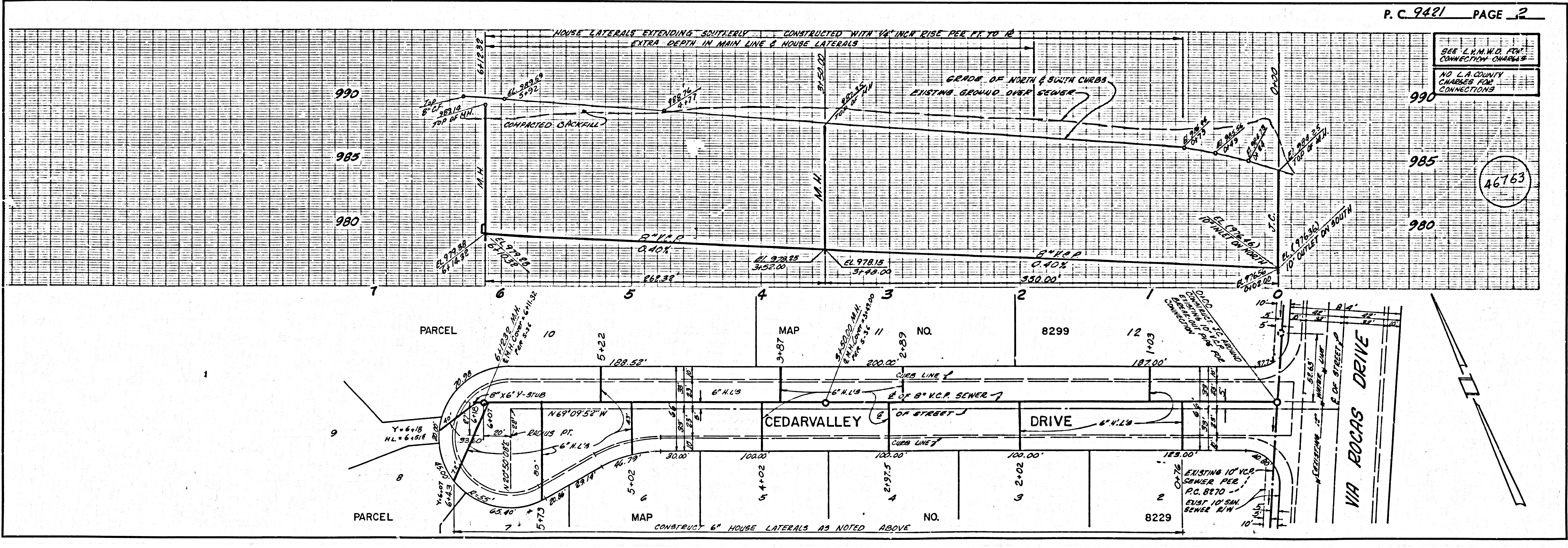
LEGEND	
MINIMUM PUBLIC SAFETY REQUIREMENTS	S-1
BRICK MANHOLE	S-3
STANDARD MANHOLE STEP	S-17
REDDING FOR SEWER PIPE	S-21
CRADLING AND ENCASING	S-28
WTE ON THE SUPPORT	S-28
ALLOWABLE TRENCH WIDTHS	S-33
LOCKING MANHOLE FRAME AND COVER	S-35
NON-REINFORCED PRECAST CONCRETE MANHOLE	S-36

TO BE CONSTRUCTED IN
PARCEL MAP NO. 8299

PRIVATE CONTRACT NO. 9421

W.S. 93, C-1
 1 SHEETS, 2 PAGES
 SCALE: VERT. 1"=4' JULY, 1977
 HORIZ. 1"=40'
 PREPARED IN THE OFFICES OF
G. WILLIAM ROSE and Associates
 6450 WINDY ST. SUITE 204
 WOODLAND HILLS, CALIFORNIA
 BY: James C. Worthington
 REG. C. E. No. 11338

COUNTY OF LOS ANGELES, CALIFORNIA
 STEPHEN J. KOONCE, (ACTING) COUNTY ENGINEER
 APPROVED [Signature] 12/10/77
 REG. C.E. NO. 17722
 CHECKED [Signature] 12/10/77
 CALABAZAS BLDG. DIST. 91 I.N. 0250.05



SEE L.A.M.W.D. FOR CONNECTION CHARGES
 NO L.A. COUNTY CHARGES FOR CONNECTIONS