

CONSTRUCTED IN  
**TRACT N° 32496**  
 PRIVATE CONTRACT NO. 9424

W.S. 380-3  
 3 SHEETS, 6 PAGES  
 SCALE: VERT. 1"=4'  
 HORIZ. 1"=40'  
 MAY, 1977  
 PREPARED IN THE OFFICES OF  
 LIND & HILLERUD, INC.  
 3000 LITTLETON DR.  
 COSTA MESA, CA 92626  
 BY: *[Signature]*  
 REG. C. E. No. 12232

46,488

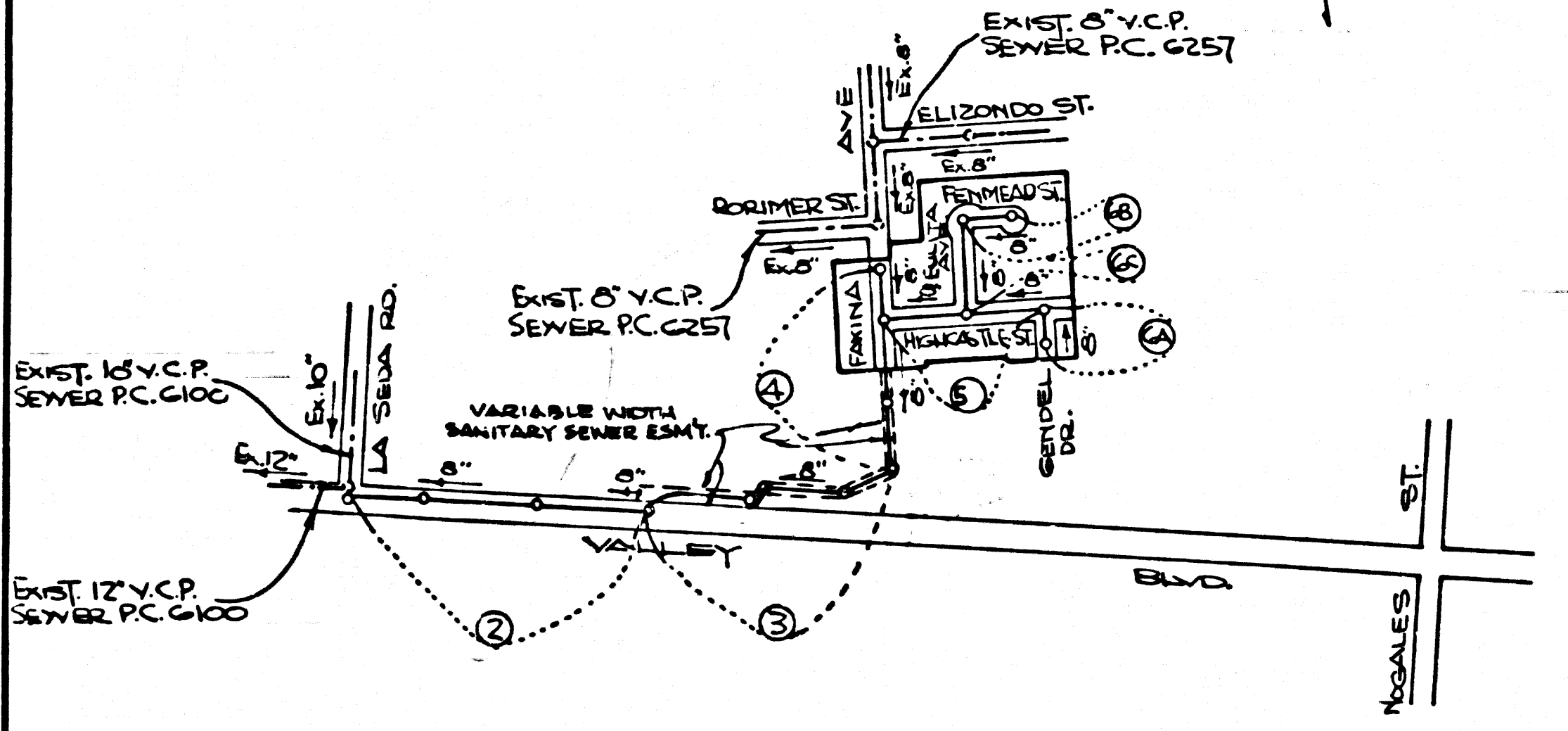
REVISION NO.	DATE
1.	12-2-77
2.	12-2-77
3.	12-2-77
4.	12-2-77

APPROVED: *Thomas J. Howard*  
 OFFICE OF COUNTY ENGINEER, 12/2/77

- GENERAL NOTES:**
- ELEVATIONS ARE IN FEET ABOVE U.S.C. & G.S. SEA LEVEL DATUM OF 1929.
  - NO REVISIONS SHALL BE MADE IN THESE PLANS WITHOUT THE APPROVAL OF THE COUNTY ENGINEER.
  - NO REPRESENTATIVE OF THE COUNTY ENGINEER WILL SURVEY OR LAY OUT ANY PORTION OF THE WORK.
  - GRADES TO WHICH THIS IMPROVEMENT IS TO BE CONSTRUCTED AS SHOWN ON PLANS AND PROFILES. GRADE POINTS FOR TOP OF CURBS, CENTER LINE OF STREETS, OR CENTER LINE OF ALLEYS ARE SHOWN BY CIRCLES ON PROFILES. AT ALL POINTS BETWEEN DESIGNATED POINTS THE GRADE SHALL BE ESTABLISHED SO AS TO COMFORM TO A STRAIGHT LINE DRAWN BETWEEN SAID DESIGNATED POINTS.
  - THE PRIVATE ENGINEER SHALL FURNISH THE COUNTY ENGINEER WITH GRADE SHEETS AND STATIONING FOR ALL HOUSE LATERALS AND "T" OR "C" BRANCHES AND SHALL PROVIDE STAKES FOR THEM AT THEIR PROPER LOCATIONS WITH STATIONING PLAINLY MARKED. ALL HOUSE LATERALS SHALL BE CONSTRUCTED IN A STRAIGHT ALIGNMENT AT RIGHT ANGLES FROM THE MAIN LINE SEWER EXCEPT AS SHOWN ON THE PLANS. HOUSE LATERALS FROM CHIMNEYS SHALL NOT HAVE AN ANGLE OF LESS THAN 45° WITH THE MAIN LINE SEWER. ANY CHANGE IN ALIGNMENT SHALL BE REQUESTED IN WRITING BY THE PRIVATE ENGINEER.
  - THE PRIVATE ENGINEER SHALL FURNISH THE HOUSE LATERAL DEPTH AT THE PROPERTY LINE BELOW THE TOP OF CURB ELEVATION FOR EACH HOUSE LATERAL ON THE GRADE SHEET.
  - BEFORE WORK CAN BE STARTED, THE CONTRACTOR MUST OBTAIN A PERMIT TO EXCAVATE IN COUNTY STREETS FROM THE L.A. COUNTY ROAD DEPT., DISTRICT OFFICE NO. 1, AND PAY A FEE TO THE COUNTY ENGINEER, 201 E. Foothill Blvd., 2nd Fl., San Dimas Regional Office, TO COVER THE COST OF CONSTRUCTION INSPECTION AND RECORD PLANS.
  - IF WORK IS TO BE DONE IN A STATE HIGHWAY, A PERMIT MUST BE OBTAINED FROM THE STATE OF CALIFORNIA, DIVISION OF HIGHWAYS, 130 SOUTH SPRING STREET, LOS ANGELES, CALIFORNIA.
  - APPROVAL OF THIS PLAN BY THE COUNTY OF LOS ANGELES DOES NOT CONSTITUTE A REPRESENTATION AS TO THE ACCURACY OF THE LOCATION OF OR THE EXISTENCE OR NON-EXISTENCE OF ANY UNDERGROUND UTILITY PIPE, OR STRUCTURE WITHIN THE LIMITS OF THIS PROJECT. THIS NOTE APPLIES TO ALL PAGES.
  - REFER TO SECTION 7-10.4.1 OF THE STANDARD SPECIFICATIONS, REGARDING SAFETY ORDERS.
  - PRIOR TO THE COMMENCEMENT OF THE PROPOSED SEWER CONSTRUCTION PERMIT BY THE COUNTY ENGINEER, THE CONTRACTOR SHALL OBTAIN A PERMIT TO EXCAVATE FROM THE STATE OF CALIFORNIA, DIVISION OF INDUSTRIAL SAFETY.

B.M. CG 1271 ELEV. 436.456  
 2" D MON IN WELL 10 IN ON  
 AT C/L INT VALLEY BLVD  
 + NOGALES ST  
 BASELINE QUAD. 1975

NOTE: NUMBERS IN CIRCLES  
 INDICATE PAGE NUMBERS



INDEX MAP  
 TRACT N° 32496  
 SCALE: 1"=600'  
 P.C. 9424

**PRIVATE ENGINEER'S NOTICE TO CONTRACTOR**

THE EXISTENCE AND LOCATION OF ANY UNDERGROUND PIPES OR STRUCTURES SHOWN ON THESE PLANS ARE OBTAINED BY A SEARCH OF THE AVAILABLE RECORDS TO THE BEST OF OUR KNOWLEDGE THERE ARE NO EXISTING UTILITIES EXCEPT AS SHOWN ON THESE PLANS. THE CONTRACTOR IS REQUIRED TO TAKE DUE PRECAUTIONARY MEASURES TO PROTECT THE UTILITY LINES SHOWN AND ANY OTHER LINES NOT OF RECORD OR NOT SHOWN ON THESE PLANS.

*John Sauer*  
 REGISTERED CIVIL ENGINEER NO 13233

NO CONNECTION FOR THE DISPOSAL OF INDUSTRIAL WASTES SHALL BE MADE TO SEWERS SHOWN ON THESE DRAWINGS UNTIL A PERMIT FOR INDUSTRIAL WASTE WATER DISCHARGE HAS BEEN ISSUED BY THE SANITATION DISTRICTS FOR SAID CONNECTION.

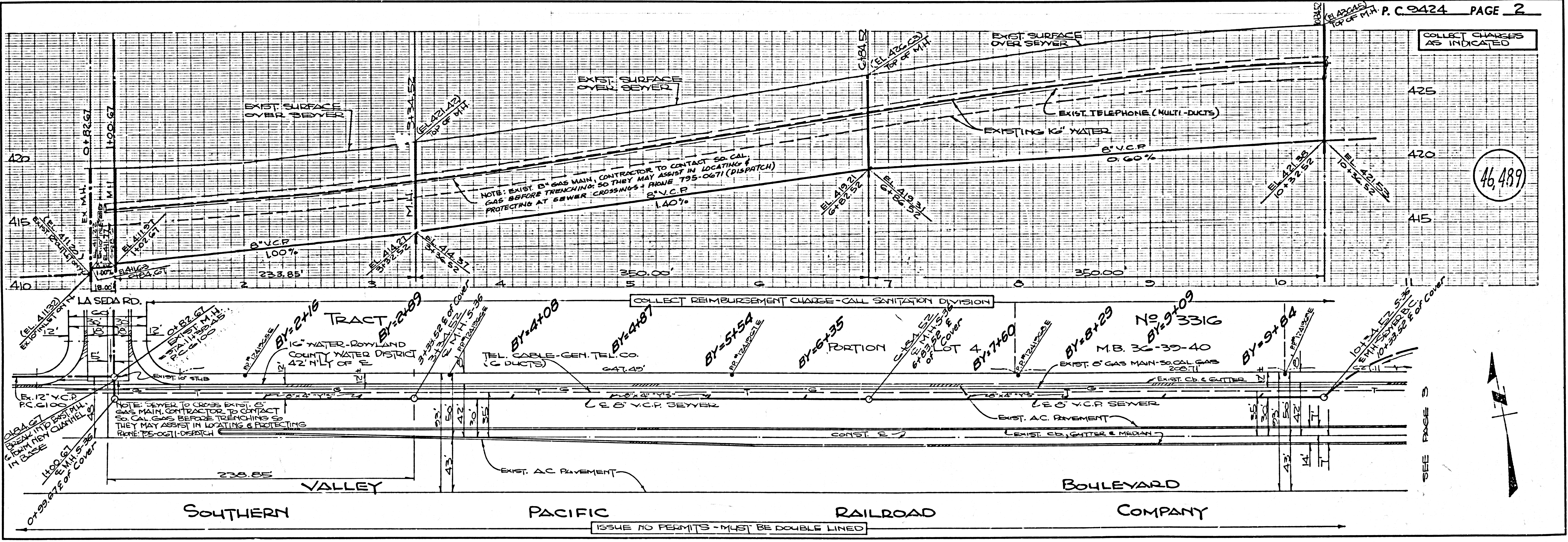
BEFORE BREAKING INTO OR CONSTRUCTION ON A COUNTY SANITATION DISTRICT SEWER FWD PRIOR TO FINAL ACCEPTANCE OF THE PROJECT SANITATION DISTRICT INSPECTOR SHALL BE NOTIFIED BY PHONE 638-1161, SO THAT REQUIRED INSPECTION CAN BE MADE.

- CONSTRUCTION NOTES:**
- WORK SHALL BE CONSTRUCTED ACCORDING TO THE STANDARD SPECIFICATIONS FOR PUBLIC WORKS CONSTRUCTION (1976 EDITION) AND COUNTY ENGINEER SPECIAL PROVISIONS FOR THE CONSTRUCTION OF SANITARY SEWERS DATED 12/2/77.
  - THE CONTRACTOR SHALL NOTIFY THE DISTRICT ENGINEER BY TELEPHONE, (213) 574-1200, AT LEAST TWENTY-FOUR HOURS BEFORE STARTING ANY WORK UNDER THIS CONTRACT.
  - HOUSE LATERALS TO BE CONSTRUCTED WITH INVERTS AT PROPERTY LINE 4 FEET BELOW CURB GRADE EXCEPT AS NOTED.
  - WYE OR TEE BRANCHES MAY BE USED FOR CONNECTIONS TO MAINLINE SEWERS EXCEPT AS NOTED.
  - ALL STRUCTURES SHALL BE EITHER BRICK MANHOLES PER 5.3 OR PRECAST CONCRETE MANHOLES PER 5.36, EXCEPT AS NOTED.
  - PROVIDE STAKES ON THE PROPERTY LINE OR PROPERTY LINES LOCATED AT RIGHT ANGLES TO THE SEWER LINE AT THE CENTER LINE OF EACH MANHOLE.
  - MANHOLE TOPS IN UNIMPROVED RIGHTS OF WAY TO BE SIX INCHES ABOVE FINISHED GRADE.
  - VITRIFIED CLAY PIPE JOINTS SHALL BE TYPE "D", "F", OR "G" PER STANDARD SPECIFICATIONS SECTION 306-2.
  - IF A POWER POLE IS WITHIN THREE FEET OF THE SEWER, THE SEWER SHALL BE ENCASED, PER 5-23, CASE II, TWO FEET ON EACH SIDE FROM THE POINT OF INTERFERENCE.
  - IF DURING THE COURSE OF CONSTRUCTION IT IS DETERMINED THAT THERE IS LESS THAN FOUR FEET OF COVER OVER THE TOP OF A MAIN LINE OR HOUSE LATERAL V.C.P. SEWER WHICH IS NOT INDICATED ON THE PLANS, THE PIPE SHALL BE ENCASED PER 5-23, CASE II UNLESS OTHERWISE APPROVED BY THE COUNTY ENGINEER.
  - ALL JOINTS BETWEEN CAST IRON PIPE AND VITRIFIED CLAY PIPE SHALL BE MADE WITH A RUBBER SLEEVE JOINT, TYPE "C" OR "D", WITH BURRING IF NECESSARY PER STANDARD SPECIFICATIONS, SECTION 306-2.
  - SEWER: TO BE TESTED FOR LEAKAGE PER SECTION 306-1.4 OF THE STANDARD SPECIFICATIONS AND SPECIAL PROVISIONS.
  - RESURFACE ALL TRENCHES WITHIN PAVED AREAS TO MEET L.A. COUNTY ROAD DEPT. OR CALIFORNIA STATE HIGHWAY REQUIREMENTS IN ACCORDANCE WITH PERMITS.
  - FULL COMPLIANCE WITH SECTION 306-1.8 OF THE SPECIAL PROVISIONS WILL BE REQUIRED FOR BACKFILL IN STREETS. CERTIFICATION OF BACKFILL COMPACTION AND SAND EQUIVALENTS BY A QUALIFIED, REGISTERED TESTING LABORATORY SHALL BE PROVIDED BY THE PERMITTEE PRIOR TO THE ISSUANCE OF A CERTIFICATE OF PARTIAL ACCEPTANCE.
  - SPECIAL BACKFILL IN DESIGNATED AREAS:  
 A. BACKFILL TRENCHES & OTHER AREAS SHALL BE REMOVED SO AS TO ACHIEVE THE NAT. OR FIN. GRADES & SLOPES SHOWN ON THE GRADING PLAN APPROVED FOR THIS TRACT BY THE BOARD OF SUPERVISORS.  
 B. ALL BACKFILL & EARTH REPLACED SHALL BE COMPACTED TO A MIN. OF 90% MAX. DENSITY PER ASTM STD. METHOD OF TESTING D 1557 AS MEASURED ACCEPTABLE. CERTIFICATION OF SUCH COMPACTION SHALL BE SUBMITTED TO THE DISTRICT ENGINEER.

THE FOLLOWING LATEST STANDARD PLANS ON FILE IN THE OFFICE OF THE COUNTY ENGINEER SHALL APPLY IN THE CONSTRUCTION OF THIS PROJECT:

12-280	MINIMUM PUBLIC SAFETY REQUIREMENTS	5-1
5-1	BRICK MANHOLE	5-3
5-3	STANDARD MANHOLE STEP	5-17
5-17	BEDDING FOR SEWER PIPE	5-27
5-27	CRADLING AND ENCASEMENT	5-29
5-29	WYE OR TEE SUPPORT	5-34
5-34	ALLOWABLE TRENCH WIDTHS	5-35
5-35	LOCKING MANHOLE FRAME AND COVER	5-38
5-38	NON-REINFORCED PRECAST CONCRETE MANHOLE	5-36

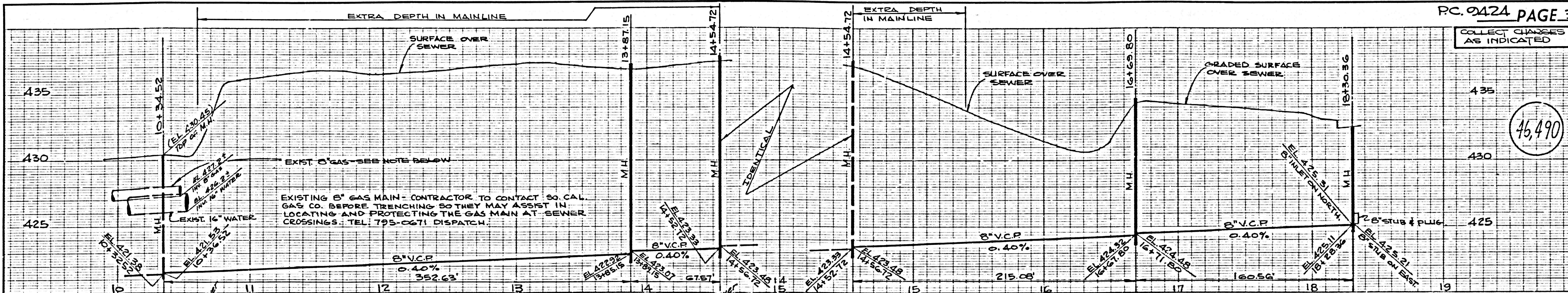
COUNTY OF LOS ANGELES, CALIFORNIA  
 STEPHEN J. KOONCE, ACTING COUNTY ENGINEER  
 JOHN D. PARKHURST, CHIEF ENGINEER  
 APPROVED: *[Signature]* 10/11/77  
 TAM DIMAS, REGIONAL ENGINEER  
 CHECKED: *Thomas E. Howard* 10/11/77  
 REG. C. E. NO. 12232  
 LA PUENTE BLDG. DIST. 2  
 J.N. 0250.02



46,489

SEE PAGE 3

COLLECT CHARGES AS INDICATED



46,490

SEWER CURVE DATA  
 Δ = 42° 50' 02"  
 R = 150'  
 L = 112.14'  
 T = 58.84'

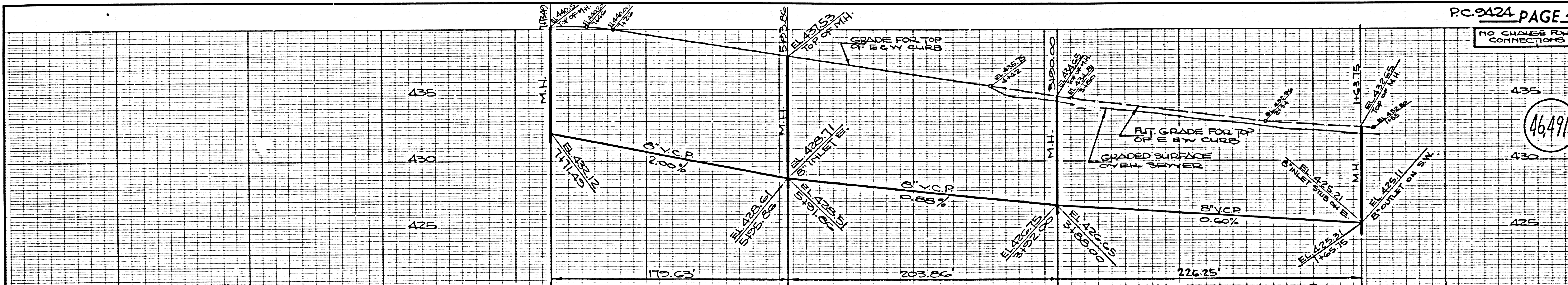
TRACT No 3316  
 PORTION OF LOT 4 MB. 36-39/40

TRACT No 3316  
 PORTION OF LOT 4 MB. 36-39/40

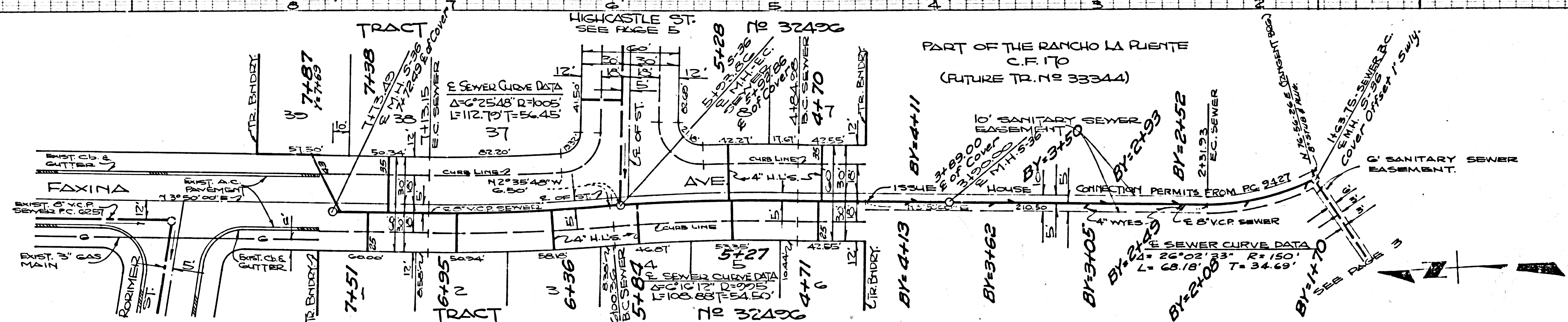
SEE PAGE 4  
 PART OF RANCHO LA PUENTE  
 C.F. 170  
 FUTURE TRACT No 33344  
 PART OF RANCHO LA PUENTE  
 C.F. 170  
 FUTURE TRACT No 33344

SOUTHERN PACIFIC RAILROAD  
 16" WATER - ROWLAND CO. WATER  
 DIST. - 42' NLY OF E

NO CHARGE FOR CONNECTIONS



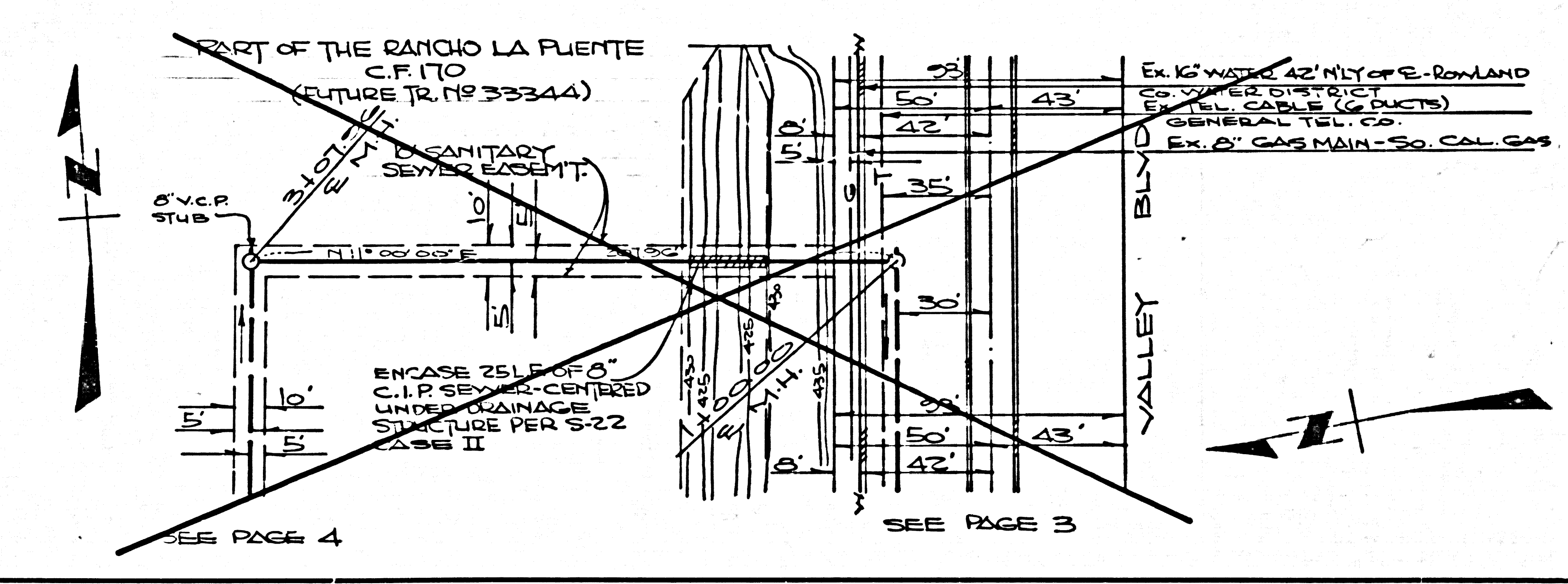
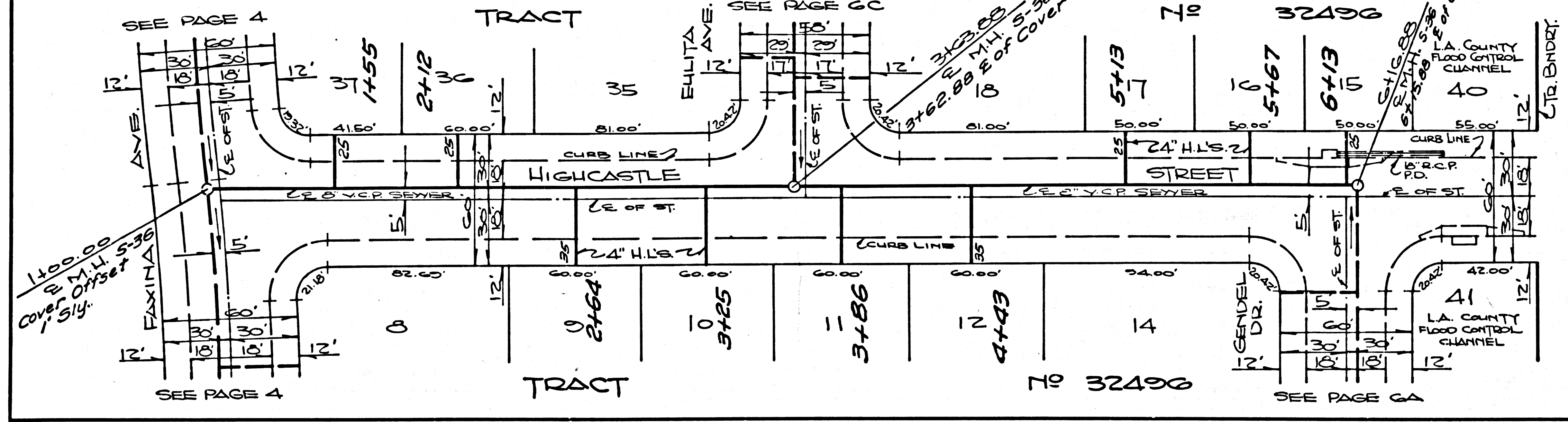
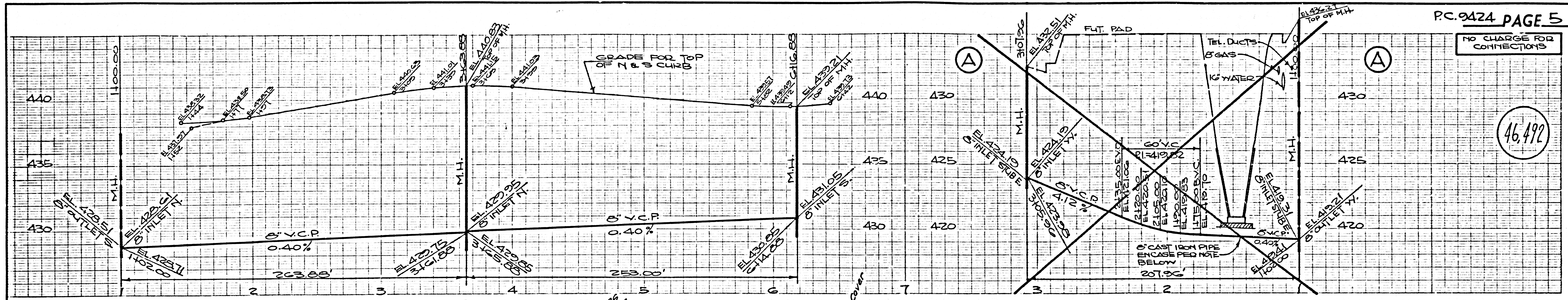
46,491



SEWER CURVE DATA  
 Δ = 26° 02' 23" R = 150'  
 L = 68.18' T = 34.69'

NO CHARGE FOR CONNECTIONS

46,492



NO CHARGE FOR CONNECTIONS

46,493

