

TO BE CONSTRUCTED IN
 TRACT N^o 31294
 PRIVATE CONTRACT NO. 9446

W.S. 90, A-1
 3 SHEETS, 5 PAGES
 SCALE: VERT. 1"=4'
 HORIZ. 1"=40'
 JULY, 1977
 PREPARED IN THE OFFICES OF
VANTAGE ENGINEERING CO.
 19150 VENTURA BLVD., SUITE 10
 WOODLAND HILLS, CALIF. 91364
 BY: *Victor J. Vantage*
 REG. C. E. No. 14815

47118

THE FOLLOWING LATEST REVISED STANDARD PLANS ON FILE IN THE OFFICE OF THE COUNTY ENGINEER SHALL APPLY IN THE CONSTRUCTION OF THIS PROJECT.

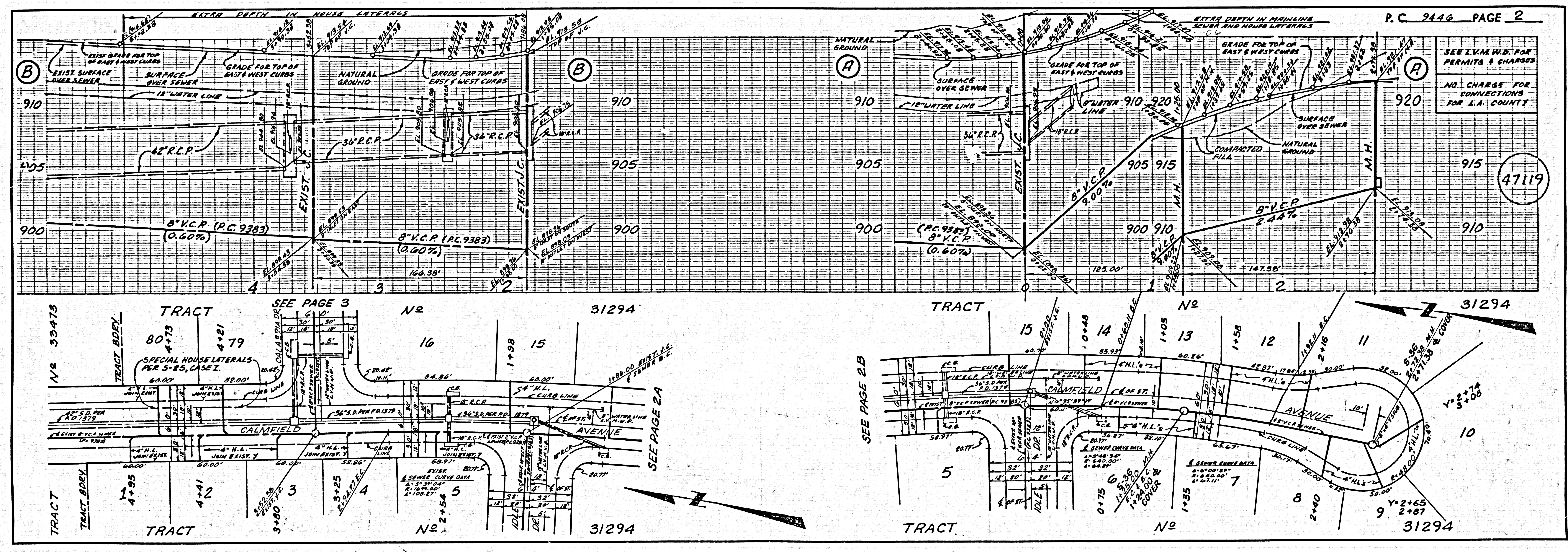
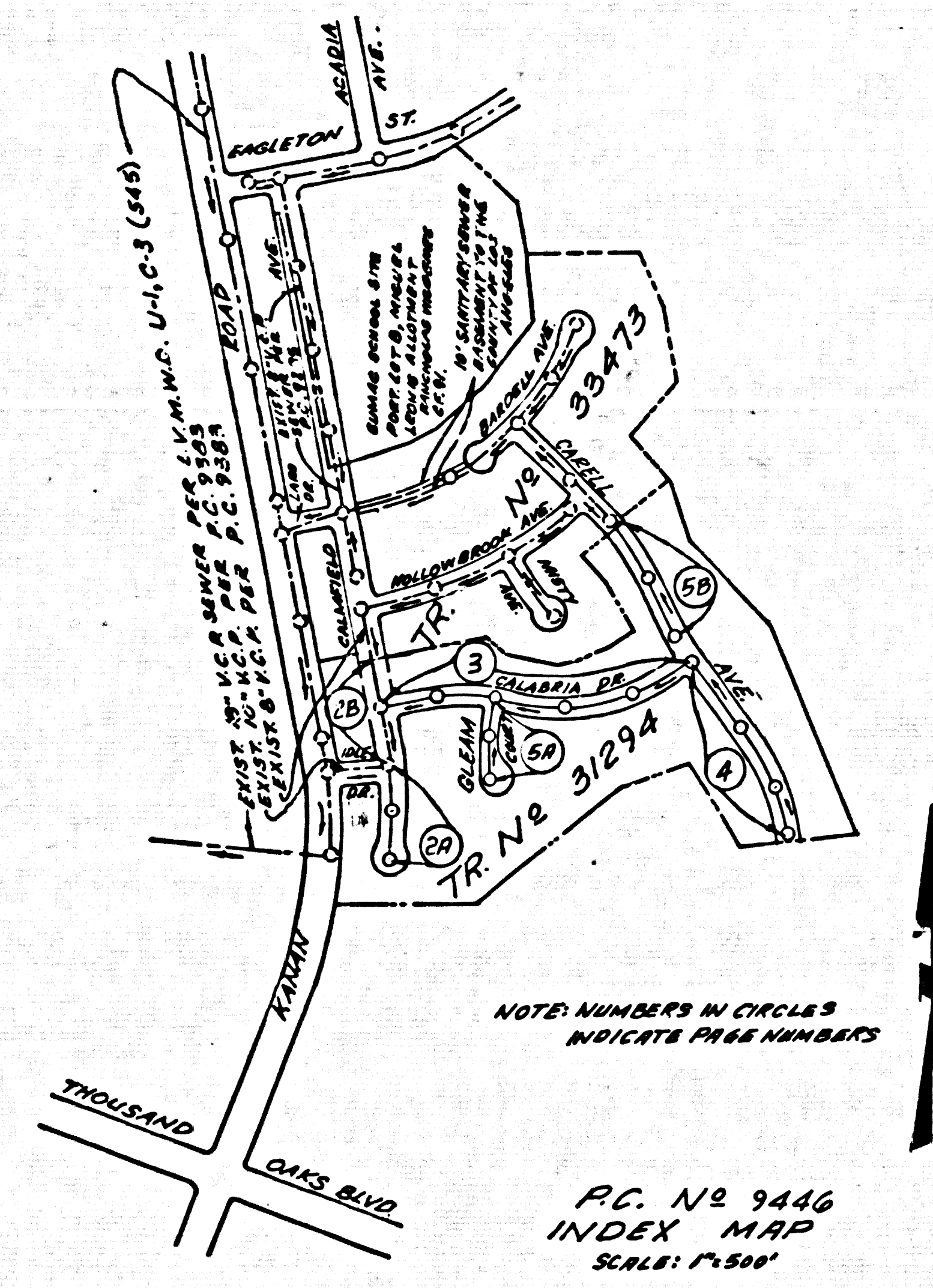
LEGEND	51
MINIMUM PUBLIC SAFETY REQUIREMENTS	52
BRICK MANHOLE	53
STANDARD MANHOLE WITH	54
REINFORCING FOR SEWER PIPE	55
CRACKING AND ENCASEMENT	56
WYE OR THE SUPPORT	57
ALLOWABLE TRENCH WIDTHS	58
LOCKING MANHOLE FRAME AND COVER	59
NON-REINFORCED PRECAST CONCRETE MANHOLE	60
SPECIAL HOUSE LATERALS	61
SPECIAL SUPPORT AND PROTECTION	62

COUNTY OF LOS ANGELES, CALIFORNIA
 COUNTY ENGINEER
 LAS VIRGENES MUNICIPAL WATER DISTRICT
 APPROVED: *Stephen J. Koonce* 12/1/77 REGIONAL ENGINEER
 APPROVED: *John W. Stokes* 12-8-77 GENERAL MANAGER, CHIEF ENGINEER
 CHECKED: *A. E. Albertson* 12/1/77
 CALABASAS BLDG. DIST. 9.1 I.N. 0250.02

- GENERAL NOTES:**
- ELEVATIONS ARE IN FEET ABOVE U.S.C. & G.S. SEA LEVEL DATUM OF 1929.
 - NO REVISIONS SHALL BE MADE IN THESE PLANS WITHOUT THE APPROVAL OF THE COUNTY ENGINEER.
 - NO REPRESENTATIVE OF THE COUNTY ENGINEER WILL SURVEY OR LAY OUT ANY PORTION OF THE WORK.
 - GRADES TO WHICH THIS IMPROVEMENT IS TO BE CONSTRUCTED ARE SHOWN ON PLANS AND PROFILES. GRADE POINTS FOR TOP OF CURBS, CENTER LINE OF STREETS, OR CENTER LINE OF ALLEYS ARE SHOWN BY CIRCLES ON PROFILES AT ALL POINTS BETWEEN DESIGNATED POINTS THE GRADE SHALL BE ESTABLISHED SO AS TO CONFORM TO A STRAIGHT LINE DRAWN BETWEEN SAID DESIGNATED POINTS.
 - THE PRIVATE ENGINEER SHALL FURNISH THE COUNTY ENGINEER WITH GRADE SHEETS AND STATIONING FOR ALL HOUSE LATERALS AND "T" OR "Y" BRANCHES AND SHALL PROVIDE STAKES FOR THEM AT THEIR PROPER LOCATIONS WITH STATIONING PLAINLY MARKED. ALL HOUSE LATERALS SHALL BE CONSTRUCTED IN A STRAIGHT ALIGNMENT AT RIGHT ANGLES FROM THE MAIN LINE SEWER EXCEPT AS SHOWN ON THE PLANS. HOUSE LATERALS FROM CHIMNEYS SHALL NOT HAVE AN ANGLE OF LESS THAN 45° WITH THE MAIN LINE SEWER. ANY CHANGE IN ALIGNMENT SHALL BE REQUESTED IN WRITING BY THE PRIVATE ENGINEER.
 - THE PRIVATE ENGINEER SHALL FURNISH THE HOUSE LATERAL DEPTH AT THE PROPERTY LINE BELOW THE TOP OF CURB ELEVATION FOR EACH HOUSE LATERAL ON THE GRADE SHEET.
 - BEFORE WORK CAN BE STARTED, THE CONTRACTOR MUST OBTAIN A PERMIT TO EXCAVATE IN COUNTY STREETS FROM THE L.A. COUNTY ROAD DEPT., DISTRICT OFFICE NO. 3, AND PAY A FEE TO THE COUNTY ENGINEER, MALIBU REGIONAL OFFICE, TO COVER THE COST OF CONSTRUCTION INSPECTION AND RECORD PLANS.
 - IF WORK IS TO BE DONE IN A STATE HIGHWAY, A PERMIT MUST BE OBTAINED FROM THE STATE OF CALIFORNIA, DIVISION OF HIGHWAYS, 126 SOUTH SPRING STREET, LOS ANGELES, CALIFORNIA.
 - APPROVAL OF THIS PLAN BY THE COUNTY OF LOS ANGELES DOES NOT CONSTITUTE A REPRESENTATION AS TO THE ACCURACY OF THE LOCATION OF OR THE EXISTENCE OR NON-EXISTENCE OF ANY UNDERGROUND UTILITY PIPE, OR STRUCTURE WITHIN THE LIMITS OF THIS PROJECT. THIS NOTE APPLIES TO ALL PAGES.
 - REFER TO SECTION 5-1.1 OF THE STANDARD SPECIFICATIONS, REGARDING SAFETY SIGNALS.
 - THE UNDERGROUND UTILITY COMPANIES WITHIN THE LIMITS OF THIS PROJECT ARE AS FOLLOWS:
 1. GAS: SOUTHERN CALIFORNIA GAS CO.
 2. ELECTRIC: SOUTHERN CALIFORNIA EDISON CO.
 3. WATER: L.A.S. VIRGENES MUNICIPAL WATER DISTRICT
 4. TELEPHONE: PACIFIC TELEPHONE CO.
 - BEFORE ISSUANCE OF THE REQUIRED SEWER CONSTRUCTION PERMIT BY THE COUNTY ENGINEER, THE CONTRACTOR SHALL OBTAIN A PERMIT TO EXCAVATE FROM THE STATE OF CALIFORNIA, DIVISION OF INDUSTRIAL SAFETY.

- CONSTRUCTION NOTES:**
- WORK SHALL BE CONSTRUCTED ACCORDING TO THE STANDARD SPECIFICATIONS FOR PUBLIC WORKS CONSTRUCTION (1976 EDITION) AND COUNTY ENGINEER SPECIAL PROVISIONS FOR THE CONSTRUCTION OF SANITARY SEWERS DATED SEPTEMBER 21, 1976 AND SHALL BE PROSECUTED ONLY IN THE PRESENCE OF THE COUNTY ENGINEER.
 - THE CONTRACTOR SHALL NOTIFY THE DISTRICT ENGINEER BY TELEPHONE, (213) 976-7282, AT LEAST TWENTY-FOUR HOURS BEFORE STARTING ANY WORK UNDER THIS CONTRACT.
 - NO. 4 LATERALS TO BE CONSTRUCTED WITH INVERTS AT PROPERTY LINE 4 FEET BELOW CURB GRADE EXCEPT AS NOTED.
 - WYE OR THE BRANCHES MAY BE USED FOR CONNECTIONS TO MAINLINE SEWERS EXCEPT AS NOTED.
 - ALL STRUCTURES SHALL BE EITHER BRICK MANHOLES PER 5-3, OR PRECAST CONCRETE MANHOLES PER 5-36, EXCEPT AS NOTED.
 - PROVIDE STAKES ON THE PROPERTY LINE OR PROPERTY LINES PRODUCED AT RIGHT ANGLES TO THE SEWER LINE AT THE CENTER LINE OF EACH MANHOLE.
 - MANHOLE TOPS IN IMPROVED RIGHTS OF WAY TO BE FLESH WITH FINISHED GRADE.
 - VITRIFIED CLAY PIPE JOINTS SHALL BE TYPE "B", "T", OR "C" PER STANDARD SPECIFICATIONS SECTION 306-2.
 - IF A POWER POLE IS WITHIN THREE FEET OF THE SEWER, THE SEWER SHALL BE ENCASED, PER 5-33, CASE II, TWO FEET ON EACH SIDE FROM THE POINT OF INTERFERENCE.
 - IF DURING THE COURSE OF CONSTRUCTION IT IS DETERMINED THAT THERE IS LESS THAN FOUR FEET OF COVER OVER THE TOP OF A MAIN LINE OR HOUSE LATERAL V.C.P. SEWER WHICH IS NOT INDICATED ON THE PLANS, THE PIPE SHALL BE ENCASED PER 5-33, CASE II UNLESS OTHERWISE APPROVED BY THE COUNTY ENGINEER.
 - ALL JOINTS BETWEEN CAST IRON PIPE AND VITRIFIED CLAY PIPE SHALL BE MADE WITH A RUBBER SLEEVE JOINT, TYPE "C" OR "D", WITH BUSHING IF NECESSARY PER STANDARD SPECIFICATIONS, SECTION 306-2.
 - SEWERS THROUGH PERMITS FOR CONSTRUCTION ARE SHOWN ON THE PLANS IN ACCORDANCE WITH THE STANDARD SPECIFICATIONS AND SPECIAL PROVISIONS.
 - RESURFACE ALL TRENCHES WITHIN PAVED AREAS TO MEET L.A. COUNTY ROAD DEPT. OR CALIFORNIA STATE HIGHWAY REQUIREMENTS IN ACCORDANCE WITH PERMITS.
 - FULL COMPLIANCE WITH SECTION 306-1.5 OF THE SPECIAL PROVISIONS WILL BE REQUIRED FOR BACKFILL IN STREETS. CERTIFICATION OF BACKFILL COMPACTION AND SAND EQUIVALENTS BY A QUALIFIED, REGISTERED TESTING LABORATORY SHALL BE PROVIDED BY THE CONTRACTOR PRIOR TO THE RECEIPT OF A PERMIT FOR PARTIAL ACCEPTANCE.
 - ALL PORTIONS OF SEWER SHALL BE ABANDONED OR REMOVED IN ACCORDANCE WITH SUB. 306-6.1 OF THE STANDARD SPECIFICATIONS.
 - CONTRACTOR SHALL MAINTAIN SEWER SERVICE AT ALL TIMES DURING CONSTRUCTION ON MAIN LINE SEWER AND HOUSE LATERAL RECONSTRUCTIONS WHEN APPLICABLE.

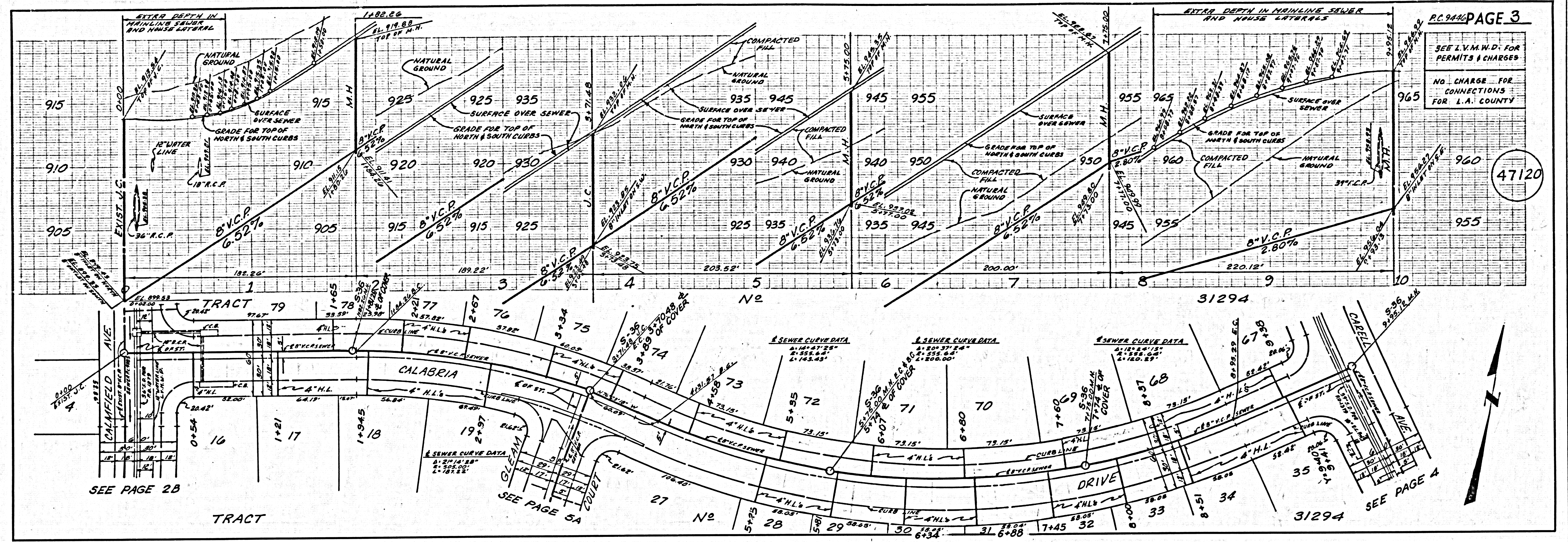
B.M. BY 9009 ELEV. 912.735
 ADDM TAG IN N. END HDWL. FOR CATTLE UNDERPASS BFT. EJO QZ RMAN ROAD 0.45 MI. N. THOUSAND OAKS BLVD.
 MALIBU QUAD. 1974



SEE L.V.M.W.D. FOR PERMITS & CHARGES

NO CHARGE FOR CONNECTIONS FOR L.A. COUNTY

47120



SEE PAGE 2B

TRACT

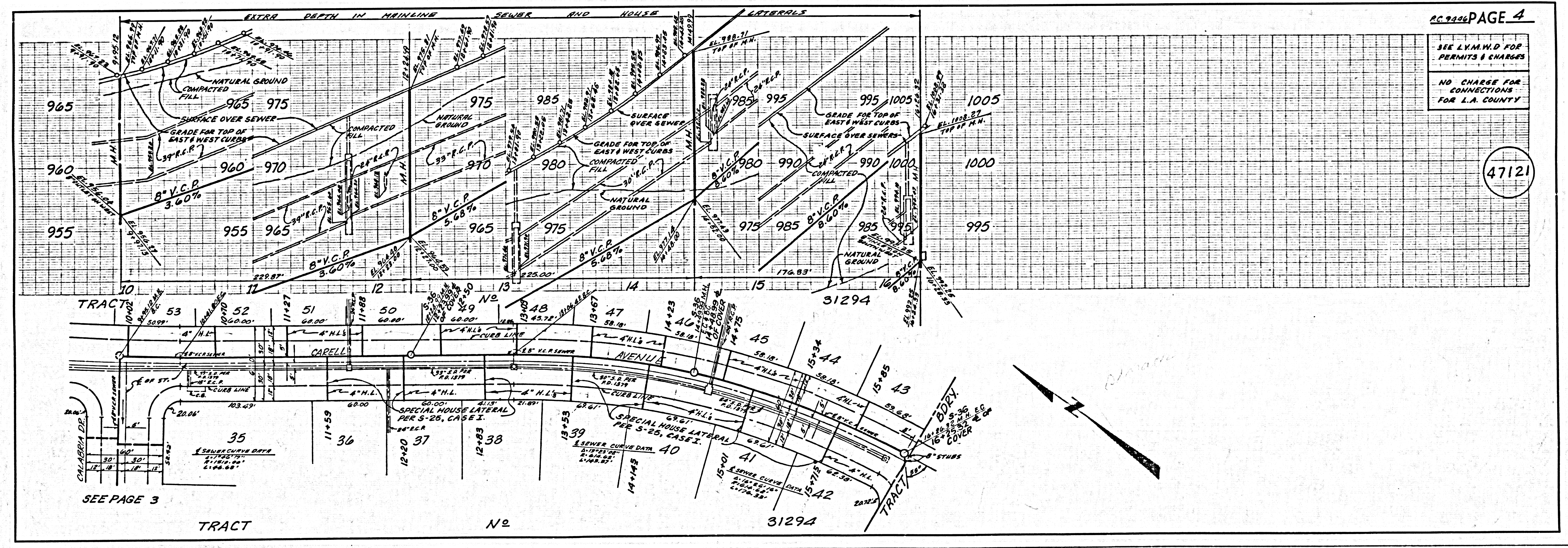
SEE PAGE 5A

SEE PAGE 4

SEE L.V.M.W.D. FOR PERMITS & CHARGES

NO CHARGE FOR CONNECTIONS FOR L.A. COUNTY

47121

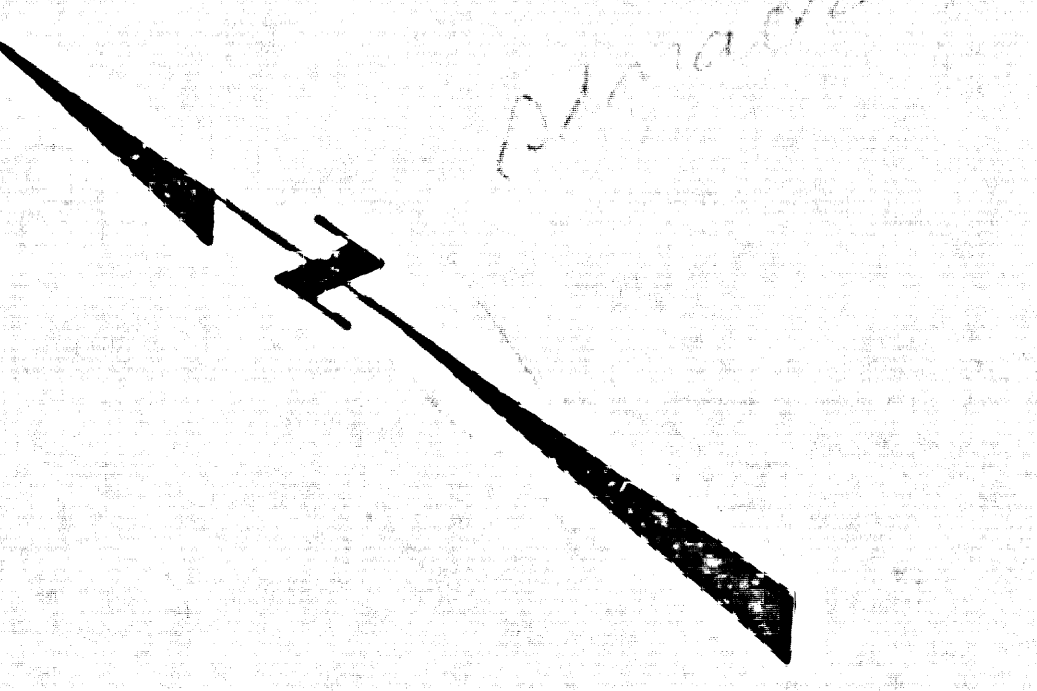


SEE PAGE 3

TRACT

NO

31294



SEE L.Y.M.W.D. FOR PERMITS & CHARGES
NO CHARGE FOR CONNECTIONS FOR L.A. COUNTY

47122

