

B.M. BY 5320 ELEV. 1046.278
 F.D. R.D.B.M. TAG & WINGWALL
 ROCK C. CULTVERT 1' SID N. END
 100' S. APPROX. & INT MULHOLLAND HWY
 & MULHOLLAND DR.
 QUAD. 19 7E

BECHTOL & EMERSON
 825 COLORADO BLVD.
 SUITE 222
 LOS ANGELES CA.
 90041
 (213) 254 5134

REVISIONS:
 REVISION NO. 1 - SEE PAGE 2A, 3A
 4" 8" 5" CAMAY COURT
 PAGE 6 & 14 NEW PLAN.
 REVISION NO. 2 - SEE PAGE 2B, 3B

APPROVED [Signature] DATE 12-19-79
 JAMES T. EMERSON R.E. 10351

DEPT. OF COUNTY ENGINEER
 APPROVED [Signature] DATE 12-19-79
 GUY W. KNIGHT

CHECKED BY [Signature] DATE 12/19/79
 R.E. WILSON

LAS VIRGENES MUNICIPAL WATER DIST.
 APPROVED [Signature] GENERAL MANAGER

REVISION NO. 2 DATE 12-05-80
 SEE PAGE 4B & 5

APPROVED [Signature] DATE 12/19/79
 DEPT. OF COUNTY ENGINEER

DOUBLE SCALE

PROFILE, ALIGNMENT AND GRADE OF
SANITARY SEWERS PAGE 1
 TO BE CONSTRUCTED IN

TRACT NO 32948
PRIVATE CONTRACT NO. 2447

W.S. 60, C-4
 4 SHEETS; 6 PAGES
 49351

SCALE: VERT. 1" = 8'
 HORIZ. 1" = 40'
 OCT 5, 1978
 PREPARED IN THE OFFICES OF
LDING 240 NEWPORT CENTER DR.
 DESIGN FLZA, SUITE 200
 NEWPORT BEACH, CALIF 92660
 REG. C. E. No. 26881

GENERAL NOTES:

- ELEVATIONS ARE IN FEET ABOVE M.S.C. & S.S. SEA LEVEL DATUM OF 1929.
- NO REVISIONS SHALL BE MADE IN THESE PLANS WITHOUT THE APPROVAL OF THE COUNTY ENGINEER.
- NO REPRESENTATIVE OF THE COUNTY ENGINEER WILL SURVEY OR LAY OUT ANY PORTION OF THE WORK.
- GRADES TO WHICH THIS IMPROVEMENT IS TO BE CONSTRUCTED ARE SHOWN ON PLANS AND PROFILES. GRADE POINTS FOR TOP OF CURBS, CENTER LINE OF STREETS, OR CENTER LINE OF ALLEYS ARE SHOWN BY CHECKS ON PROFILES. AT ALL POINTS BETWEEN DESIGNATED POINTS THE GRADE SHALL BE ESTABLISHED SO AS TO CONFORM TO A STRAIGHT LINE DRAWN BETWEEN SAID DESIGNATED POINTS.
- THE PRIVATE ENGINEER SHALL FURNISH THE COUNTY ENGINEER WITH GRADE SHEETS AND STATIONING FOR ALL HOUSE LATERALS AND 4" OR 6" MANHOLES AND SHALL PROVIDE STAKES FOR THESE AT THEIR PROPER LOCATIONS WITH STATIONING PLAINLY MARKED. ALL HOUSE LATERALS SHALL BE CONSTRUCTED IN A STRAIGHT ALIGNMENT AT RIGHT ANGLES FROM THE MAIN LINE SEWER EXCEPT AS SHOWN ON THE PLANS. HOUSE LATERALS FROM CHIMNEYS SHALL NOT HAVE AN ANGLE OF LESS THAN 45° WITH THE MAIN LINE SEWER. ANY CHANGE IN ALIGNMENT SHALL BE RECORDED IN WRITING BY THE PRIVATE ENGINEER.
- THE PRIVATE ENGINEER SHALL FURNISH THE HOUSE LATERAL DEPTH AT THE PROPERTY LINE BELOW THE TOP OF CURB ELEVATION FOR EACH HOUSE LATERAL ON THE GRADE SHEET.
- BEFORE WORK CAN BE STARTED, THE CONTRACTOR MUST OBTAIN A PERMIT TO EXCAVATE IN COUNTY STREETS FROM THE L.A. COUNTY ROAD DEPT., DISTRICT OFFICE NO. 3, AND PAY A FEE TO THE COUNTY ENGINEER, 350 S. SERRANO AVE., LOS ANGELES TO COVER THE COST OF CONSTRUCTION INSPECTION AND RECORD PLANS.
- IF WORK IS TO BE DONE IN A STATE HIGHWAY, A PERMIT MUST BE OBTAINED FROM THE STATE OF CALIFORNIA, DIVISION OF HIGHWAYS, 120 SOUTH SPRING STREET, LOS ANGELES, CALIFORNIA.
- APPROVAL OF THIS PLAN BY THE COUNTY OF LOS ANGELES DOES NOT CONSTITUTE A REPRESENTATION AS TO THE ACCURACY OF THE LOCATION OF OR THE EXISTENCE OR NON-EXISTENCE OF ANY UNDERGROUND UTILITY PIPE, OR STRUCTURE WITHIN THE LIMITS OF THIS PROJECT. THIS NOTE APPLIES TO ALL PAGES.
- REFER TO SECTION 7-10.4.1 OF THE STANDARD SPECIFICATIONS, REGARDING SAFETY CORDS.
- "PROVIDE TO THE CONTRACTOR ON THE UNIMPROVED SEWER CONSTRUCTION PERMIT BY THE COUNTY ENGINEER, THE CONTRACTOR SHALL MAINTAIN A MINIMUM 10' CLEARANCE FROM THE CENTER LINE OF CALIFORNIA HIGHWAYS OR INDUSTRIAL HIGHWAYS."
- THE UNDERGROUND UTILITY CONDUITS UNDER THE LANDS OF THIS PROJECT ARE AS FOLLOWS:
 1. LOS ANGELES COUNTY ROAD CONTROL DISTRICT
 2. LAS VIRGENES MUNICIPAL WATER DISTRICT
 3. S.B. CALIF. GAS CO.
 4. PACIFIC TELEPHONE
 5. S.B. CALIF. EDISON CO.

CONSTRUCTION NOTES:

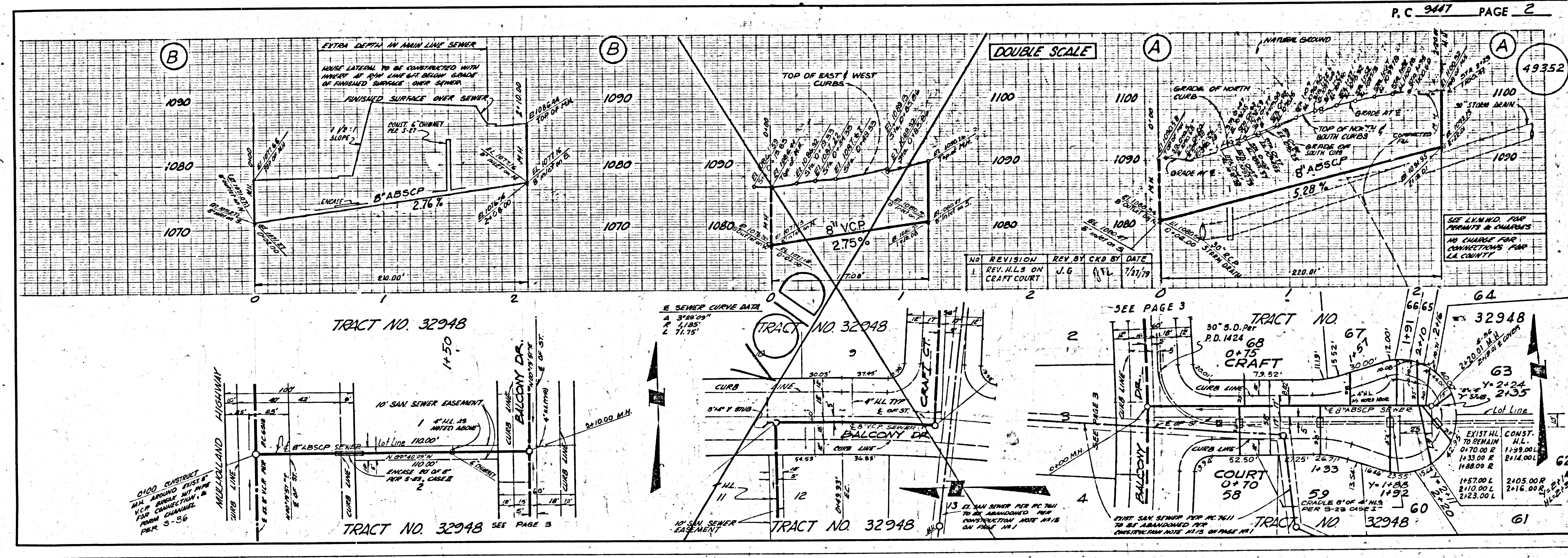
- WORK SHALL BE CONSTRUCTED ACCORDING TO THE STANDARD SPECIFICATIONS FOR PUBLIC WORKS CONSTRUCTION (1978 EDITION) AND COUNTY ENGINEER SPECIAL PROVISIONS FOR THE CONSTRUCTION OF SANITARY SEWERS DATED SEPTEMBER 23, 1974 AND SHALL BE PROSECUTED ONLY IN THE PRESENCE OF THE COUNTY ENGINEER.
- THE CONTRACTOR SHALL NOTIFY THE BUREAU OF PUBLIC WORKS, DIVISION OF TELEPHONE, GAS & WATER, AT LEAST TWENTY-FOUR HOURS BEFORE STARTING ANY WORK UNDER THIS CONTRACT.
- HOUSE LATERALS TO BE CONSTRUCTED WITH INVERTS AT PROPERTY LINE 6 FEET BELOW CURB GRADE EXCEPT AS NOTED.
- VERT. OR THE BRANCHES MAY BE USED FOR CONNECTION TO EXISTING SEWERS EXCEPT AS NOTED.
- ALL STRUCTURES SHALL BE EITHER BRICK MANHOLES PER 5-24, OR PRECAST CONCRETE MANHOLES PER 5-24, EXCEPT AS NOTED.
- PROVIDE STAKES ON THE PROPERTY LINE OR PROPERTY LINES PRODUCED AT RIGHT ANGLES TO THE SEWER LINE AT THE CENTER LINE OF EACH MANHOLE.
- MANHOLES TOPS IN UNIMPROVED AREAS OF WAY TO BE SIX INCHES ABOVE FINISHED GRADE.
- VERTICAL CLAY PIPE JOINTS SHALL BE TYPE "T", "P", OR "C" PER STANDARD SPECIFICATIONS SECTION 306-2.
- IF A POWER POLE IS WITHIN THREE FEET OF THE SEWER, THE SEWER SHALL BE ENCASED, PER 5-25, CASE II, TWO FEET ON EACH SIDE FROM THE POINT OF INTERFERENCE.
- IF DURING THE COURSE OF CONSTRUCTION IT IS DETERMINED THAT THERE IS LESS THAN FOUR FEET OF COVER OVER THE TOP OF A MAIN LINE OR HOUSE LATERAL V.C.P. SEWER WHICH IS NOT INDICATED ON THE PLANS, THE PIPE SHALL BE ENCASED PER 5-25, CASE II UNLESS OTHERWISE APPROVED BY THE COUNTY ENGINEER.
- ALL JOINTS BETWEEN CLAY PIPE AND VITRIFIED CLAY PIPE SHALL BE MADE WITH A RUBBER SLEEVE JOINT, TYPE "C" OR "D", WITH RUBBER IN NECESSARY PER STANDARD SPECIFICATIONS, SECTION 306-4.
- SEWERS TO BE REFINISHED FOR LEAKAGE PER SECTION 306-4.4 OF THE STANDARD SPECIFICATIONS AND SPECIAL PROVISIONS.
- RESURFACE ALL TRENCHES WITHIN PAVED AREAS TO MEET L.A. COUNTY ROAD DEPT. OR CALIFORNIA STATE HIGHWAY REQUIREMENTS IN ACCORDANCE WITH PERMITS.
- FIELD COMPLIANCE WITH SECTION 306-1.3.3 OF THE SPECIAL PROVISIONS WILL BE REQUIRED FOR BACETRI IN STREETS. CERTIFICATION OF BACETRI COMPACTION AND SAND EQUIVALENTS BY A QUALIFIED, REGISTERED TESTING LABORATORY SHALL BE PROVIDED BY THE CONTRACTOR TO THE EXTENT OF A 100' LENGTH OF TRENCH.
- ALL MATERIALS TO BE USED SHALL BE APPROVED OR PROVIDED BY CONTRACTOR'S INSPECTION PER 5-26 & 5-27 AND SHALL BE SUBJECT TO INSPECTION BY THE COUNTY ENGINEER. ALL MATERIALS TO BE USED SHALL BE APPROVED OR PROVIDED BY CONTRACTOR'S INSPECTION PER 5-26 & 5-27 AND SHALL BE SUBJECT TO INSPECTION BY THE COUNTY ENGINEER.
- CONTRACTOR SHALL MAINTAIN A CLEARANCE OF NOT LESS THAN 10' FROM ALL STRUCTURES AND UTILITIES.
- CONTRACTOR SHALL MAINTAIN A CLEARANCE OF NOT LESS THAN 10' FROM ALL STRUCTURES AND UTILITIES.
- CONTRACTOR SHALL MAINTAIN A CLEARANCE OF NOT LESS THAN 10' FROM ALL STRUCTURES AND UTILITIES.
- CONTRACTOR SHALL MAINTAIN A CLEARANCE OF NOT LESS THAN 10' FROM ALL STRUCTURES AND UTILITIES.
- CONTRACTOR SHALL MAINTAIN A CLEARANCE OF NOT LESS THAN 10' FROM ALL STRUCTURES AND UTILITIES.

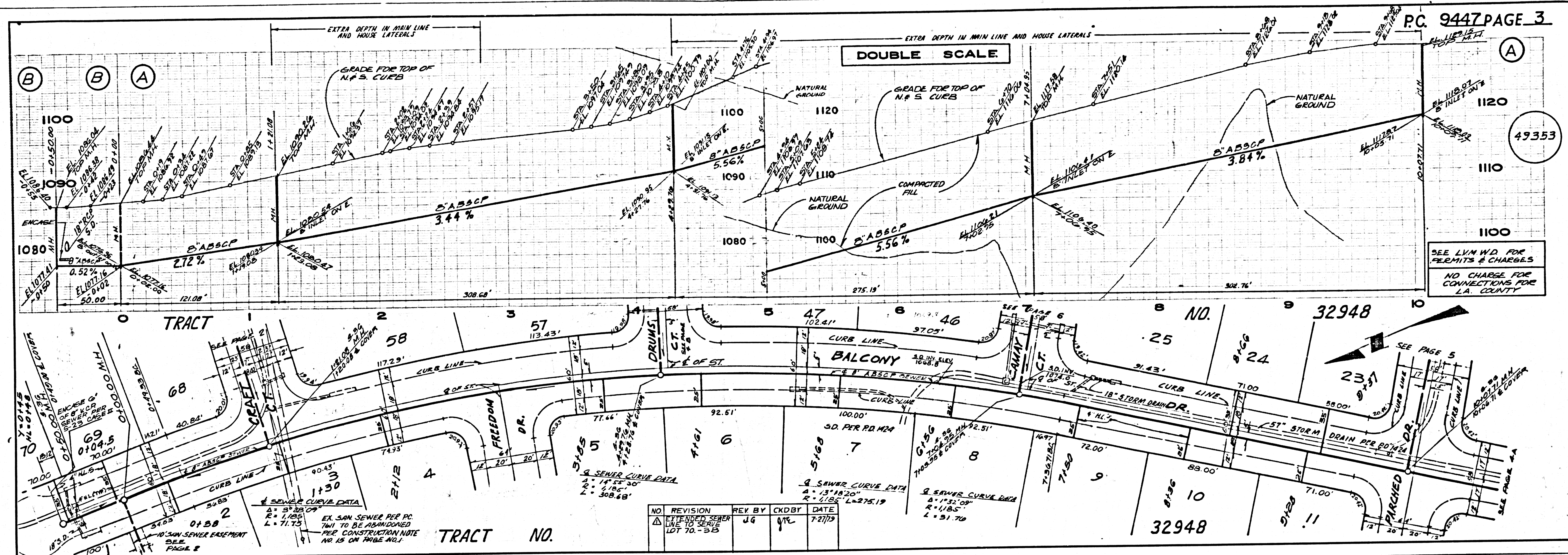
THE FOLLOWING LATEST REVISED STANDARD PLANS ON FILE IN THE OFFICE OF THE COUNTY ENGINEER SHALL APPLY IN THE CONSTRUCTION OF THIS PROJECT:

LEGEND

MINIMUM PUBLIC SAFETY REQUIREMENTS	5-1
BRICK MANHOLE	5-2
STANDARD MANHOLE STEP	5-17
BEDDING FOR SEWER PIPE	5-21
CRADLING AND BRACEMENT	5-22
WYS OR THE SUPPORT	5-23
ALLOWABLE TRENCH WIDTHS	5-24
LOCKING MANHOLE FRAME AND COVER	5-26
NON-REINFORCED PRECAST CONCRETE MANHOLE	5-28
BRICKLINED "SHOULDER" ALLEYS	5-29
REINFORCED MANHOLE FRAMES & COVERS	5-30
PROTECTIVE ARCHES OVER STREETS	5-31

COUNTY OF LOS ANGELES, CALIFORNIA
 DEPARTMENT OF COUNTY ENGINEER
STEPHEN J. KOCHER COUNTY ENGINEER
 APPROVED [Signature] DATE 11-27-78
 CHECKED [Signature] DATE 11-27-78
 CALABRARE BLDG. DIST. 9.1 J.N. 0358.02





BASE ON TRACT

