

PRIVATE CONTRACT NO. 9452
INDEX 258 S 121
W.S. 62-A, 3
5 SHEETS, 10 PAGES

SCALE: VERT. 1"=4'
HORIZ. 1"=40'
MAY, 1978
PREPARED IN THE OFFICES OF
SIRKANO ENGINEERING ASSOCIATES
15230 BURBANK BLVD., VAN NUYS
CA. 91411 (213) 787-8550
BY: Karen C. Kambly
REG. C. E. No. 21223

46788

GENERAL NOTES:

- ELEVATIONS ARE IN FEET ABOVE U.S.C. & G.S. SEA LEVEL DATUM OF 1929.
- NO REVISIONS SHALL BE MADE IN THESE PLANS WITHOUT THE APPROVAL OF THE COUNTY ENGINEER.
- NO REPRESENTATIVE OF THE COUNTY ENGINEER WILL SURVEY OR LAY OUT ANY PORTION OF THE WORK.
- GRADES TO WHICH THIS IMPROVEMENT IS TO BE CONSTRUCTED ARE SHOWN ON PLANS AND PROFILES. GRADE POINTS FOR TOP OF CURBS, CENTER LINE OF STREETS, OR CENTER LINE OF ALLEYS ARE SHOWN BY CIRCLES ON PROFILES AT ALL POINTS BETWEEN DESIGNATED POINTS THE GRADE SHALL BE ESTABLISHED SO AS TO CONFORM TO A STRAIGHT LINE DRAWN BETWEEN SAID DESIGNATED POINTS.
- THE PRIVATE ENGINEER SHALL FURNISH THE COUNTY ENGINEER WITH GRADE SHEETS AND STATIONING FOR ALL HOUSE LATERALS AND "T" OR "Y" BRANCHES AND SHALL PROVIDE STAKES FOR THEM AT THEIR PROPER LOCATIONS WITH STATIONING PLAINLY MARKED. ALL HOUSE LATERALS SHALL BE CONSTRUCTED IN A STRAIGHT ALIGNMENT AT RIGHT ANGLES FROM THE MAIN LINE SEWER EXCEPT AS SHOWN ON THE PLANS. HOUSE LATERALS FROM CHIMNEYS SHALL NOT HAVE AN ANGLE OF LESS THAN 45° WITH THE MAIN LINE SEWER. ANY CHANGE IN ALIGNMENT SHALL BE REQUESTED IN WRITING BY THE PRIVATE ENGINEER.
- THE PRIVATE ENGINEER SHALL FURNISH THE HOUSE LATERAL DEPTH AT THE PROPERTY LINE BELOW THE TOP OF CURB ELEVATION FOR EACH HOUSE LATERAL ON THE GRADE SHEET.
- BEFORE WORK CAN BE STARTED, THE CONTRACTOR MUST OBTAIN A PERMIT TO EXCAVATE IN COUNTY STREETS FROM THE L.A. COUNTY ROAD DEPT., DISTRICT OFFICE NO. 4, AND PAY A FEE TO THE COUNTY ENGINEER, SANTA CLARITA VALLEY REGIONAL OFFICE, TO COVER THE COST OF CONSTRUCTION INSPECTION AND RECORD PLANS.
- IF WORK IS TO BE DONE IN A STATE HIGHWAY, A PERMIT MUST BE OBTAINED FROM THE STATE OF CALIFORNIA, DIVISION OF HIGHWAYS, 130 SOUTH SPRING STREET, LOS ANGELES, CALIFORNIA.
- APPROVAL OF THIS PLAN BY THE COUNTY OF LOS ANGELES DOES NOT CONSTITUTE A REPRESENTATION AS TO THE ACCURACY OF THE LOCATION OF OR THE EXISTENCE OR NON-EXISTENCE OF ANY UNDERGROUND UTILITY PIPE, OR STRUCTURE WITHIN THE LIMITS OF THIS PROJECT. THE NOTE APPLIES TO ALL PAGES.
- REFER TO SECTION 5-18.4.1 OF THE STANDARD SPECIFICATIONS, REGARDING SAFETY ORDERS.
- PRIOR TO THE ISSUANCE OF THE REQUIRED SEWER CONSTRUCTION PERMIT BY THE COUNTY ENGINEER, THE CONTRACTOR SHALL OBTAIN A PERMIT TO EXCAVATE FROM THE STATE OF CALIFORNIA, DIVISION OF INDUSTRIAL SAFETY.

CONSTRUCTION NOTES:

- WORK SHALL BE CONSTRUCTED ACCORDING TO THE STANDARD SPECIFICATIONS FOR PUBLIC WORKS CONSTRUCTION (1976 EDITION WITH 1977 SUPPLEMENTS) AND COUNTY ENGINEER SPECIAL PROVISIONS FOR THE CONSTRUCTION OF SANITARY SEWERS DATED SEPTEMBER 1976, AND SHALL BE PROSECUTED ONLY IN THE PRESENCE OF THE COUNTY ENGINEER.
- THE CONTRACTOR SHALL NOTIFY THE DESIGN DIVISION BY TELEPHONE, (213) 974-7283 AT LEAST TWENTY-FOUR HOURS BEFORE STARTING ANY WORK UNDER THIS CONTRACT.
- HOUSE LATERALS TO BE CONSTRUCTED WITH INVERTS AT PROPERTY LINE 6 FEET BELOW CURB GRADE EXCEPT AS NOTED.
- WYE OR TEE BRANCHES MAY BE USED FOR CONNECTIONS TO MAINLINE SEWERS EXCEPT AS NOTED.
- ALL STRUCTURES SHALL BE EITHER BRICK MANHOLES PER S-3 OR PRECAST CONCRETE MANHOLES PER S-36, EXCEPT AS NOTED.
- PROVIDE STAKES ON THE PROPERTY LINE OR PROPERTY LINES PRODUCED AT RIGHT ANGLES TO THE SEWER LINE AT THE CENTER LINE OF EACH MANHOLE.
- MANHOLE TOPS IN UNIMPROVED RIGHTS OF WAY TO BE SIX INCHES ABOVE FINISHED GRADE.
- VITRIFIED CLAY PIPE JOINTS SHALL BE TYPE "D", "F", OR "G" PER STANDARD SPECIFICATIONS SECTION 306-2.
- IF A POWER POLE IS WITHIN THREE FEET OF THE SEWER, THE SEWER SHALL BE ENCASED, PER S-33, CASE 3, TWO FEET ON EACH SIDE FROM THE POINT OF INTERFERENCE.
- IF DURING THE COURSE OF CONSTRUCTION IT IS DETERMINED THAT THERE IS LESS THAN FOUR FEET OF COVER OVER THE TOP OF A MAIN LINE OR HOUSE LATERAL V.C.P. SEWER WHICH IS NOT INDICATED ON THE PLANS, THE PIPE SHALL BE ENCASED PER S-33, CASE 3 UNLESS OTHERWISE APPROVED BY THE COUNTY ENGINEER.
- ALL JOINTS BETWEEN CAST IRON PIPE AND VITRIFIED CLAY PIPE SHALL BE MADE WITH A RUBBER SLEEVE JOINT, TYPE "C" OR "B", (WITH RUBBERING IF NECESSARY) PER STANDARD SPECIFICATIONS, SECTION 306-2.
- SEWERS TO BE TESTED FOR LEAKAGE PER SECTION 306-1.6 OF THE STANDARD SPECIFICATIONS AND SPECIAL PROVISIONS.
- RESURFACE ALL TRENCHES WITHIN PAVED AREAS TO MEET L.A. COUNTY ROAD DEPT. OR CALIFORNIA STATE HIGHWAY REQUIREMENTS IN ACCORDANCE WITH PERMITS.
- FULL COMPLIANCE WITH SECTION 306-1.35 OF THE SPECIAL PROVISIONS WILL BE REQUIRED FOR BACKFILL IN STREETS. CERTIFICATION OF BACKFILL COMPACTION AND SAND EQUIVALENTS BY A QUALIFIED, REGISTERED TESTING LABORATORY SHALL BE PROVIDED BY THE PERMITTEE PRIOR TO THE ISSUANCE OF A CERTIFICATE OF PARTIAL ACCEPTANCE.
- FOR NEW HOUSE LATERALS TO BE CONSTRUCTED ON EXISTING 10" V.C.P. MAINLINE TO BE REMOVED AND REPLACED WITH 16" X 4" WIRE OR TEE USING TYPE "D" JOINTS.
- COUNTY SANITATION DISTRICTS STANDARDS MUST BE OBTAINED PRIOR TO CONNECTING HOUSE ON LOT 6, TRACT 33888.

THE FOLLOWING LATEST REVISED STANDARD PLANS ON FILE IN THE OFFICE OF THE COUNTY ENGINEER SHALL APPLY IN THE CONSTRUCTION OF THIS PROJECT.

LEGEND	S-3
MINIMUM PUBLIC SAFETY REQUIREMENTS	S-3
BRICK MANHOLE	S-3
STANDARD MANHOLE TYPE	S-37
BEDDING FOR SEWER PIPE	S-31
CRADLING AND ENCASEMENT	S-38
WYE OR TEE SUPPORT	S-36
ALLOWABLE TRENCH WIDTHS	S-36
LOCKING MANHOLE FRAME AND COVER	S-38
NON-REINFORCED PRECAST CONCRETE MANHOLE	S-36

THE FOLLOWING COUNTY SANITATION DISTRICTS STANDARDS SHALL APPLY IN THE CONSTRUCTION OF THIS PROJECT:

STANDARD MANHOLE TYPE "A"	S-a-201
STANDARD MANHOLE TYPE "D"	S-a-204
STANDARD 6" MANHOLE FRAME & COVER	S-a-207
STANDARD SADDLE	S-a-209

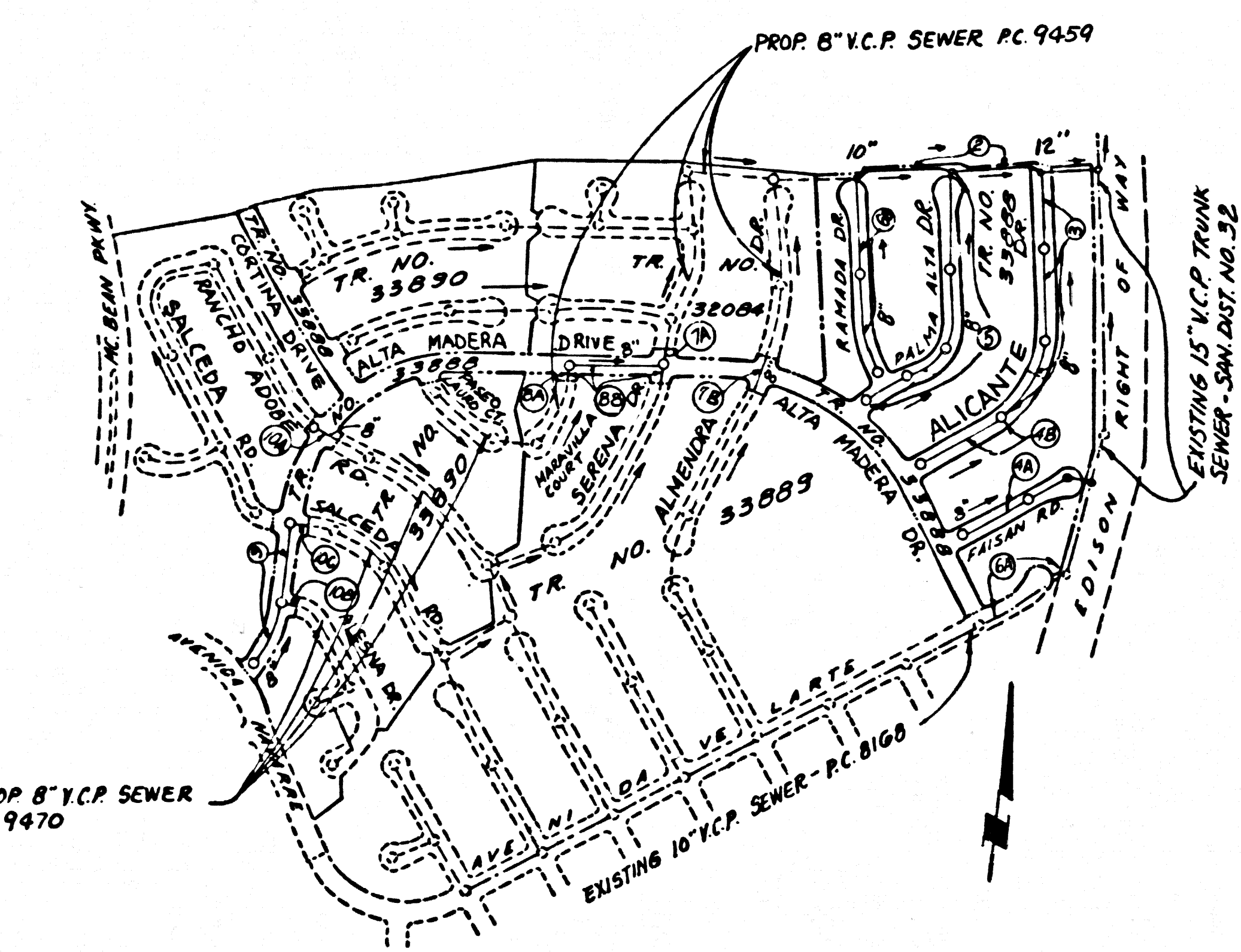
COUNTY OF LOS ANGELES, CALIFORNIA

STEPHEN J. KOONCE, COUNTY ENGINEER
JOHN D. PARKHURST, CHIEF ENGINEER
APPROVED: James N. Miller 4/29/78 REGIONAL ENGINEER (DATE)
APPROVED: James N. Miller 5/2/78 OFFICE ENGINEER (DATE)

CHECKED: Ernie H. Mason 4-28-78 (DATE)
REG. C.E. NO. 13786

SANTA CLARITA VALLEY BLDG. DIST. 82
I.N. 0250.02

B.M. BL 4236 ELEV. 1211.232
RD. B.M. TAG N. CB. AVENIDA NAVARRE
TTE +30. N/O INT. MC BEAN PKWY
& NE COR.
NEWHALL QUAD. 1972



INDEX MAP
SCALE 1"=500'
P.C. 9452

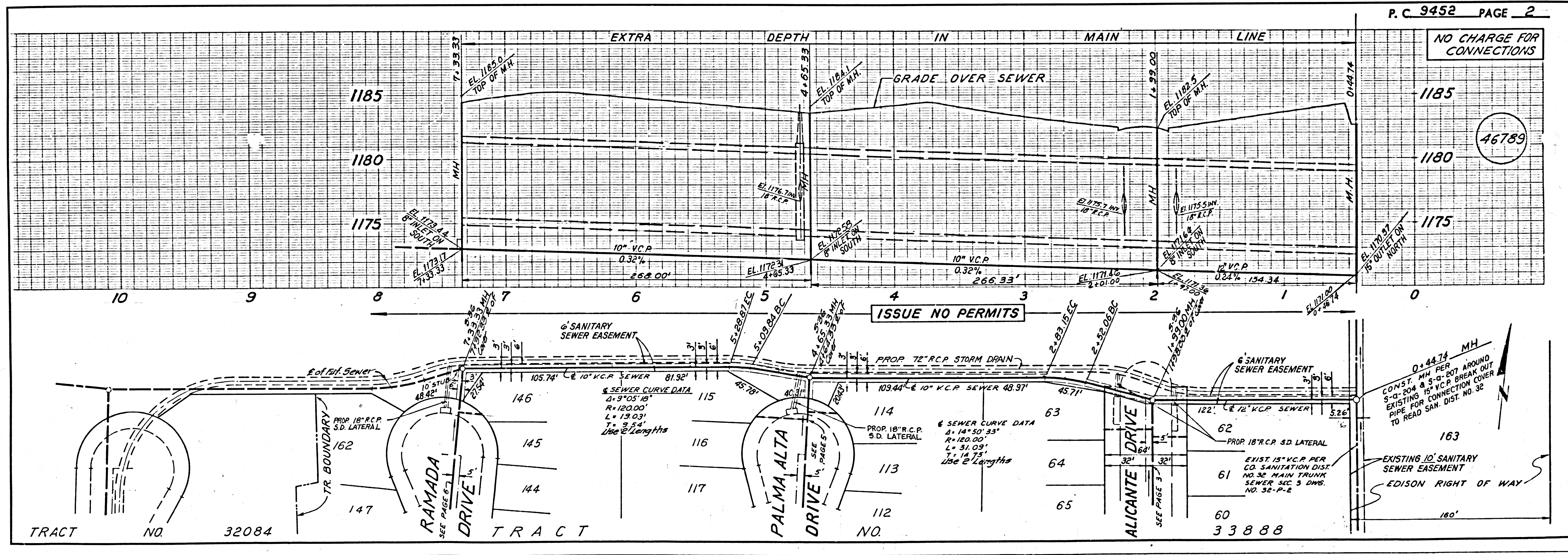
NOTE: NUMBERS IN CIRCLES INDICATE PAGE NUMBER

NO CONNECTION FOR THE DISPOSAL OF INDUSTRIAL WASTES SHALL BE MADE TO SEWERS SHOWN ON THESE DRAWINGS UNTIL A PERMIT FOR INDUSTRIAL WASTE WATER DISCHARGE HAS BEEN ISSUED BY THE SANITATION DISTRICTS FOR SAID CONNECTION.

BEFORE BREAKING INTO OR CONSTRUCTION ON A COUNTY SANITATION DISTRICT SEWER AND PRIOR TO FINAL ACCEPTANCE OF THE PROJECT SANITATION DISTRICTS OFFICE, SHALL BE NOTIFIED BY PHONE 366-8400, SO THAT REQUIRED INSPECTION CAN BE MADE.

LOTS 162 & 163
ARE NOT TO BE SERVED

ISSUE NO PERMITS ON PAGES 7 TO 10
UNTIL OUTLET IS ACCEPTED



NO CHARGE FOR CONNECTIONS

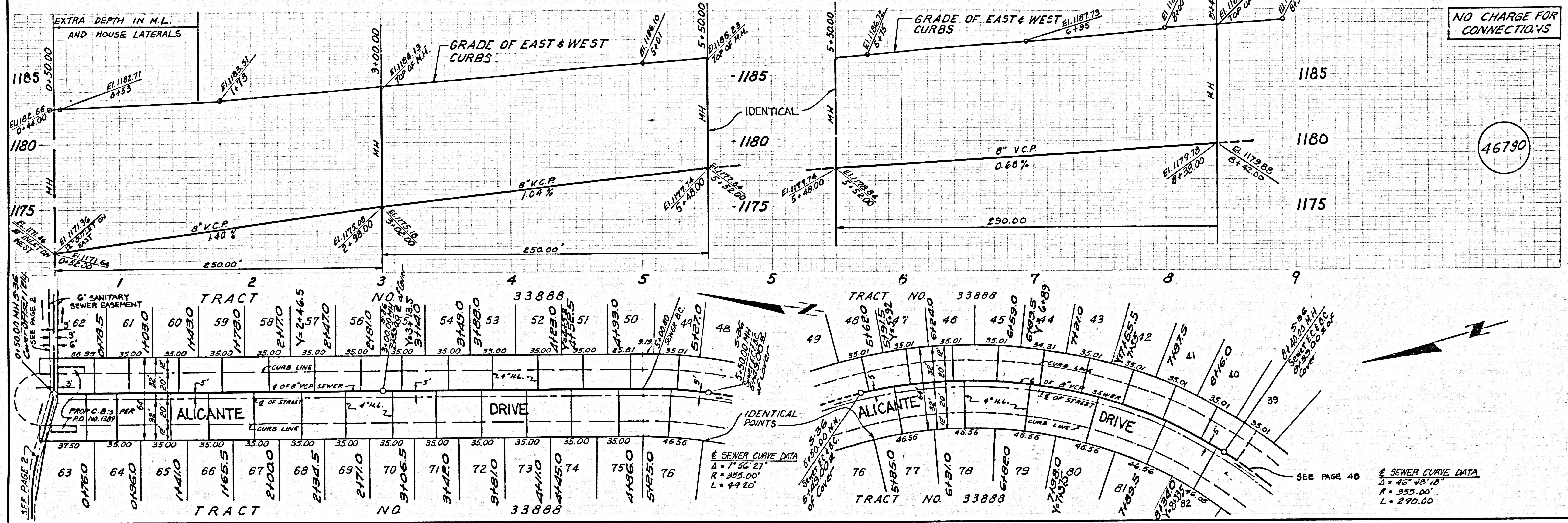
46789

ISSUE NO PERMITS

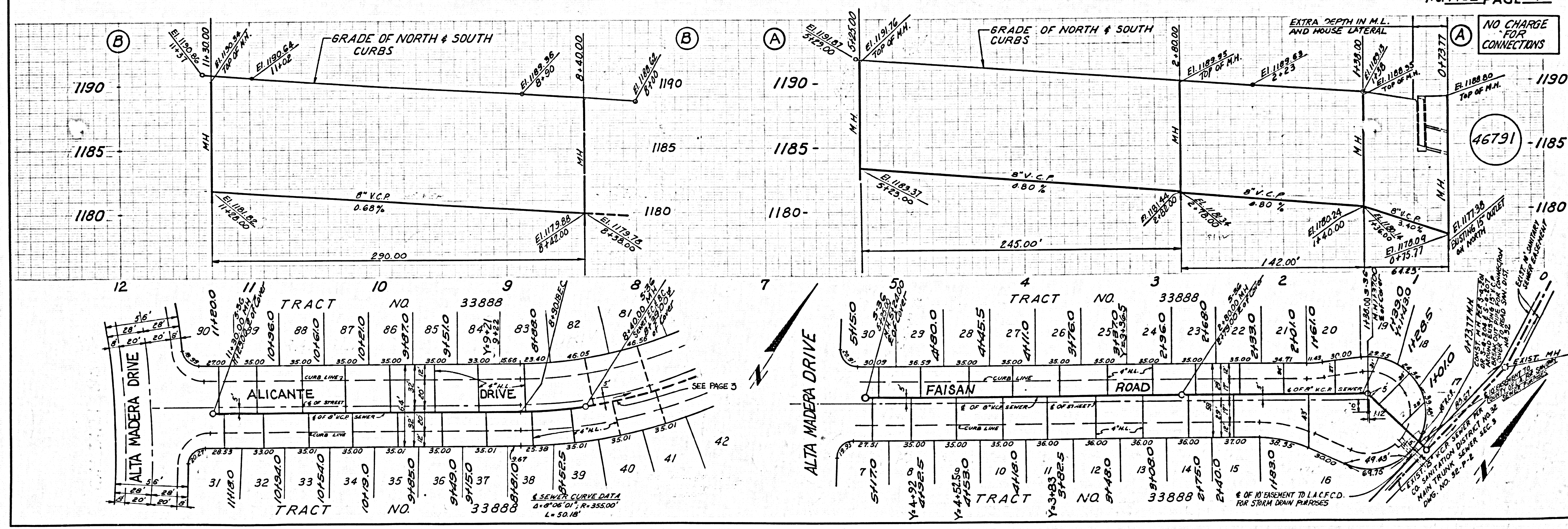
CONST. MH PER S-a-204 & S-a-207 AROUND EXISTING 15\"/>

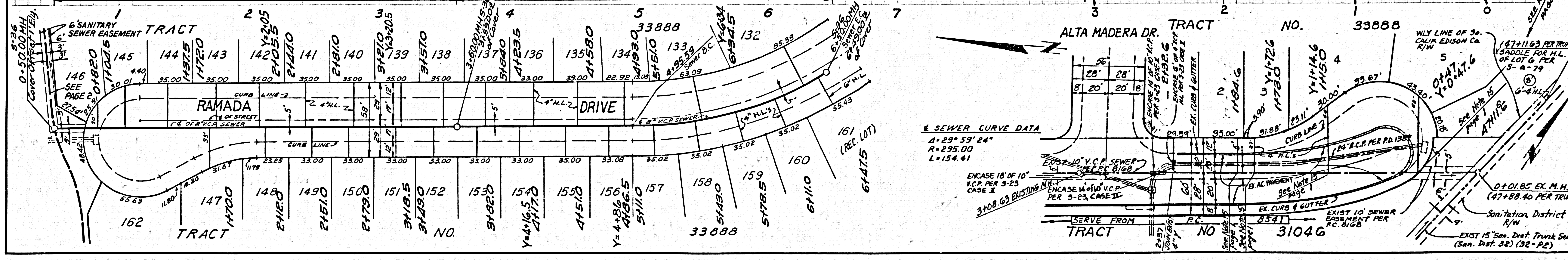
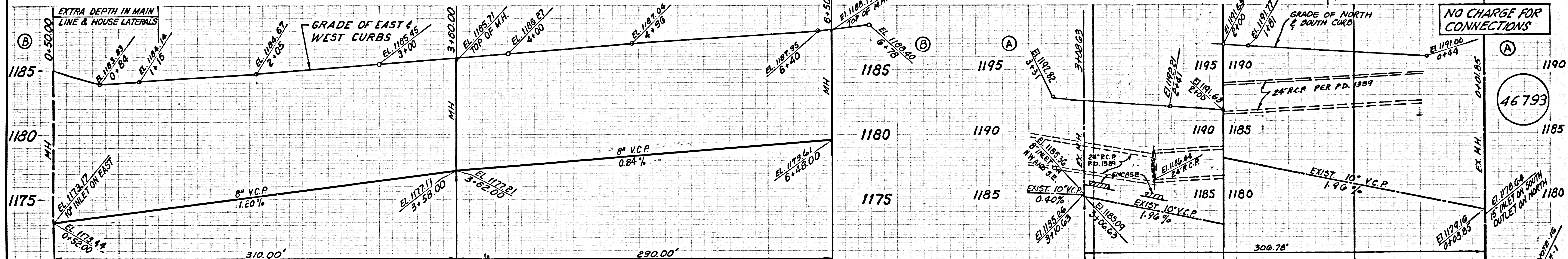
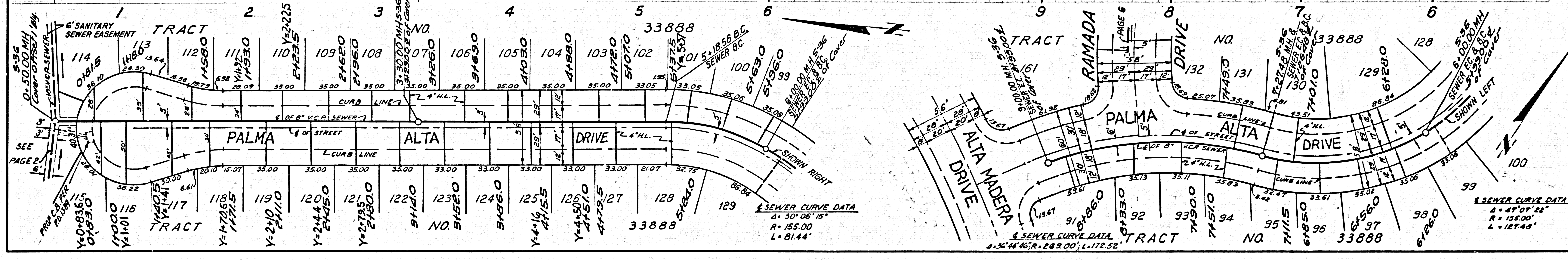
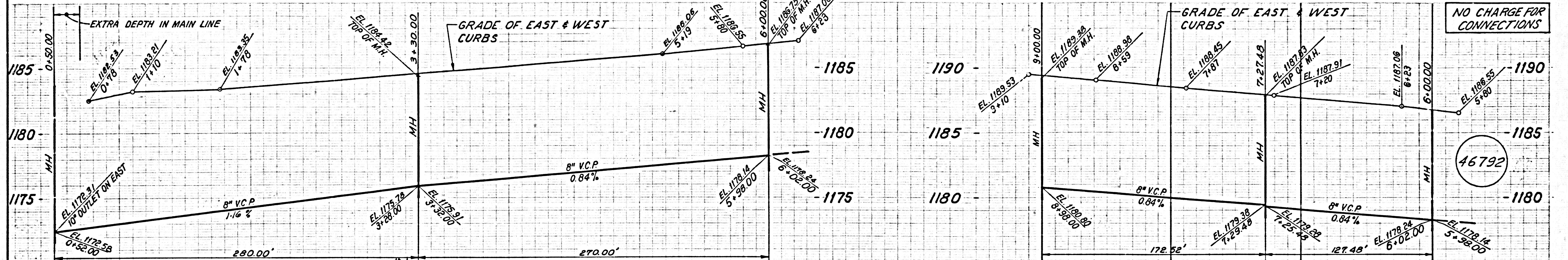
EXISTING 10\"/>

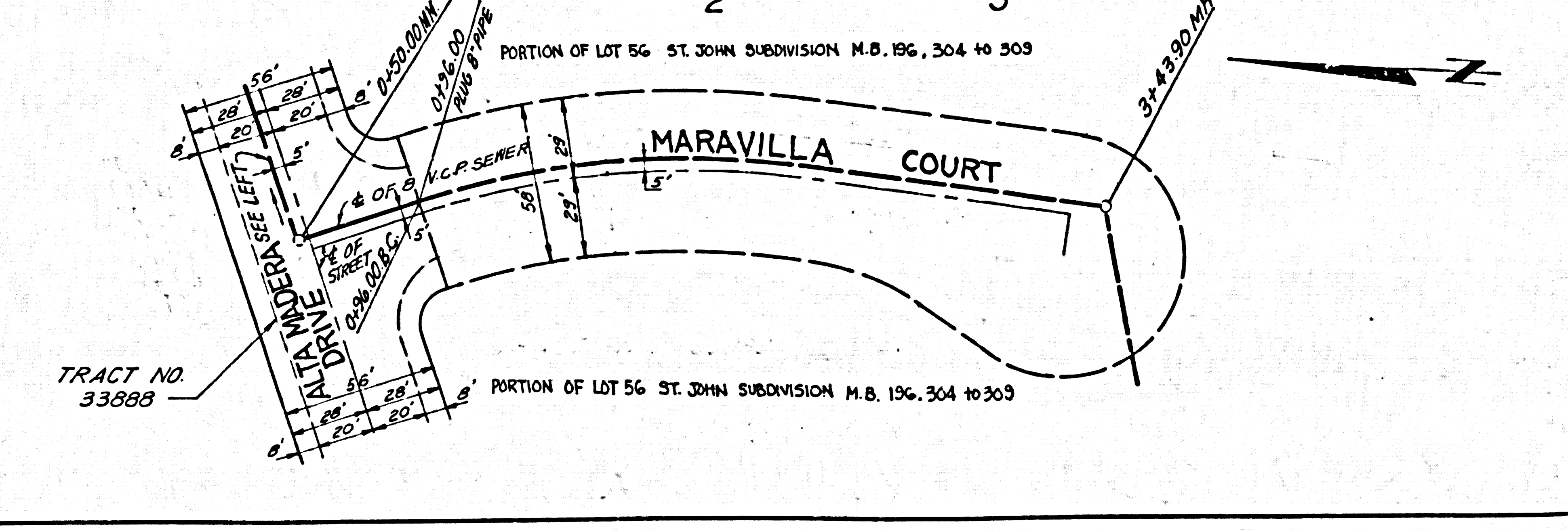
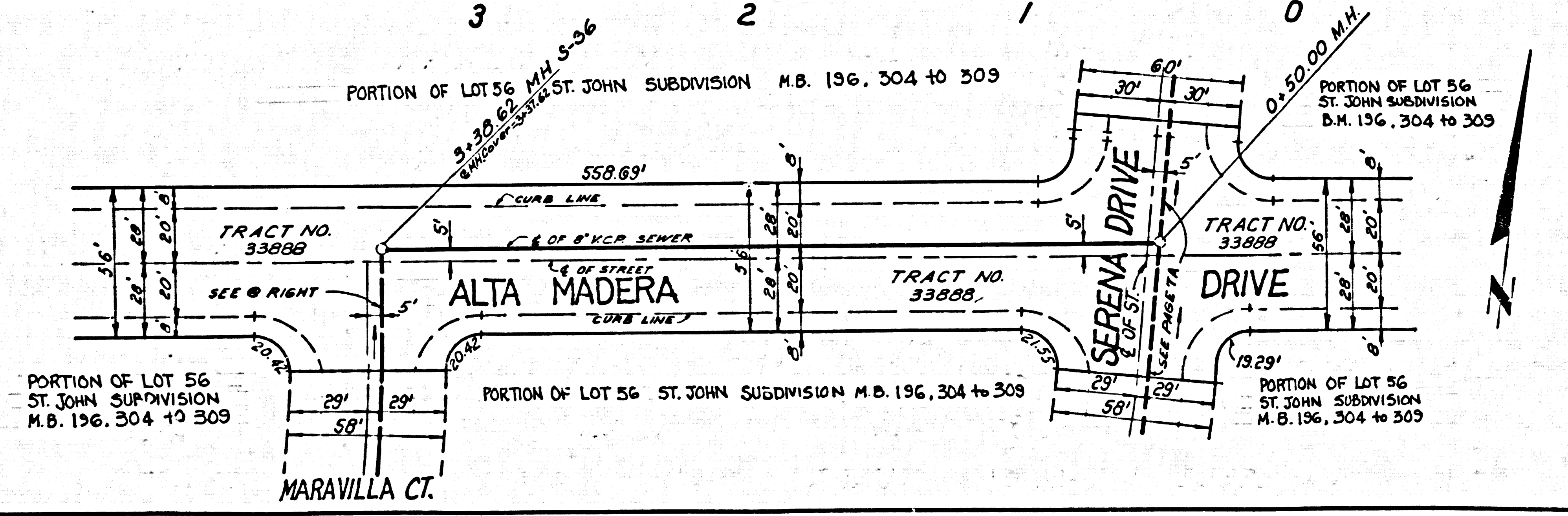
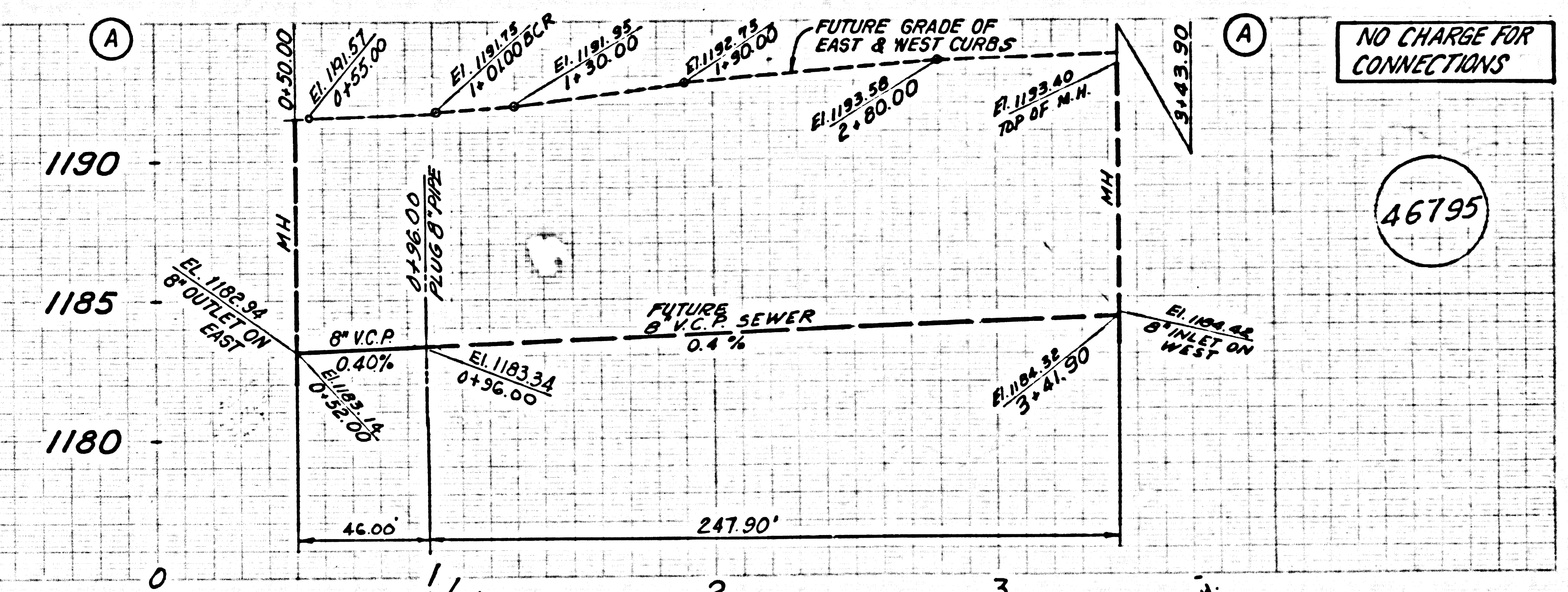
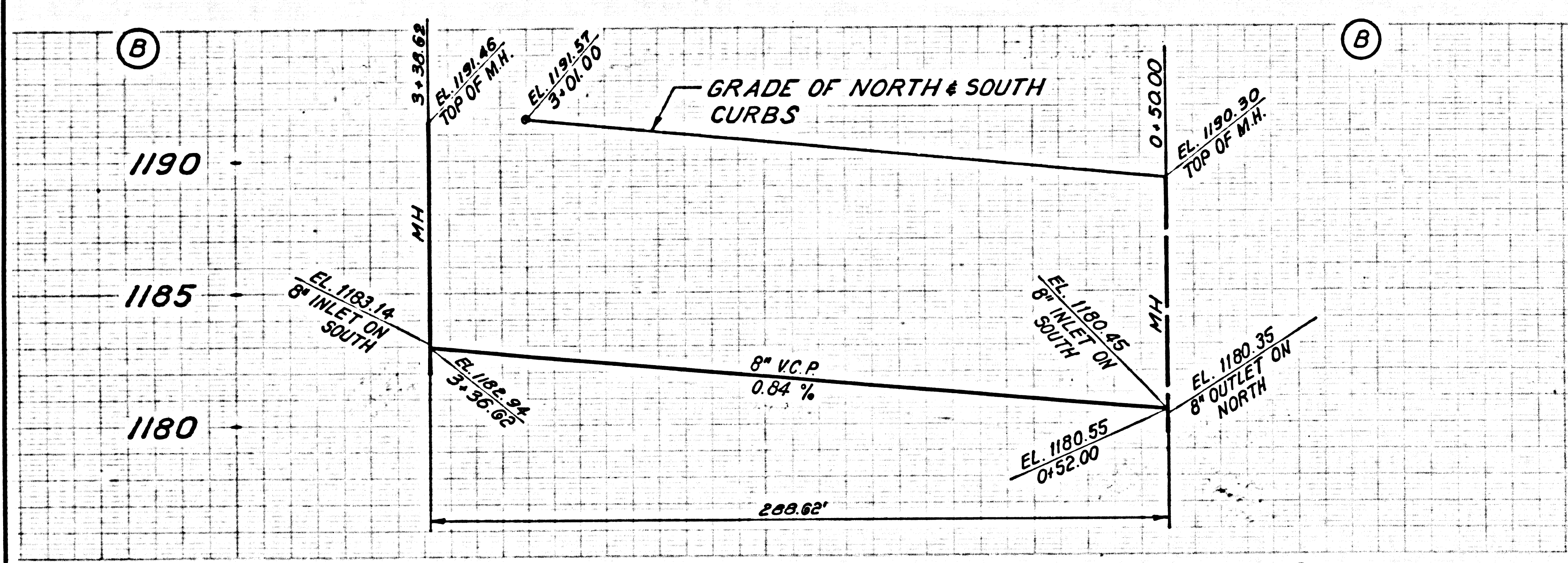
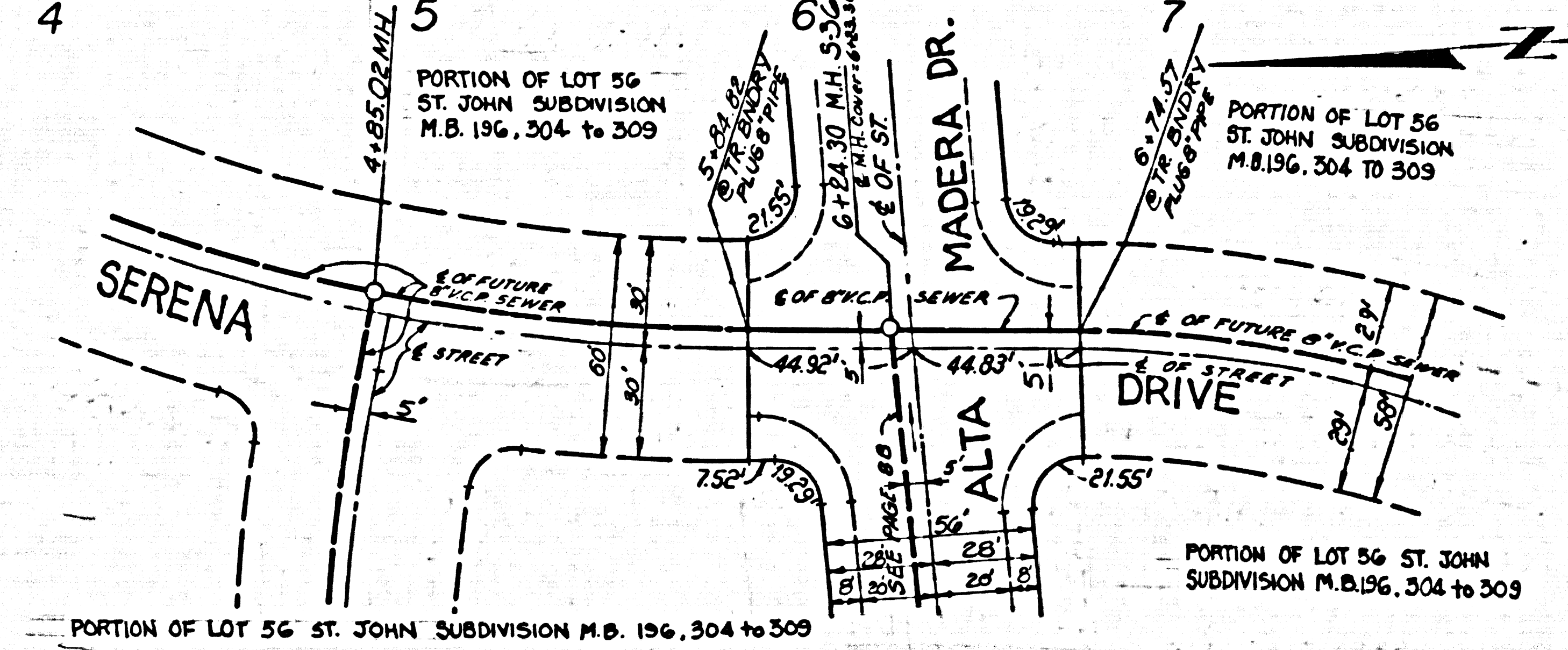
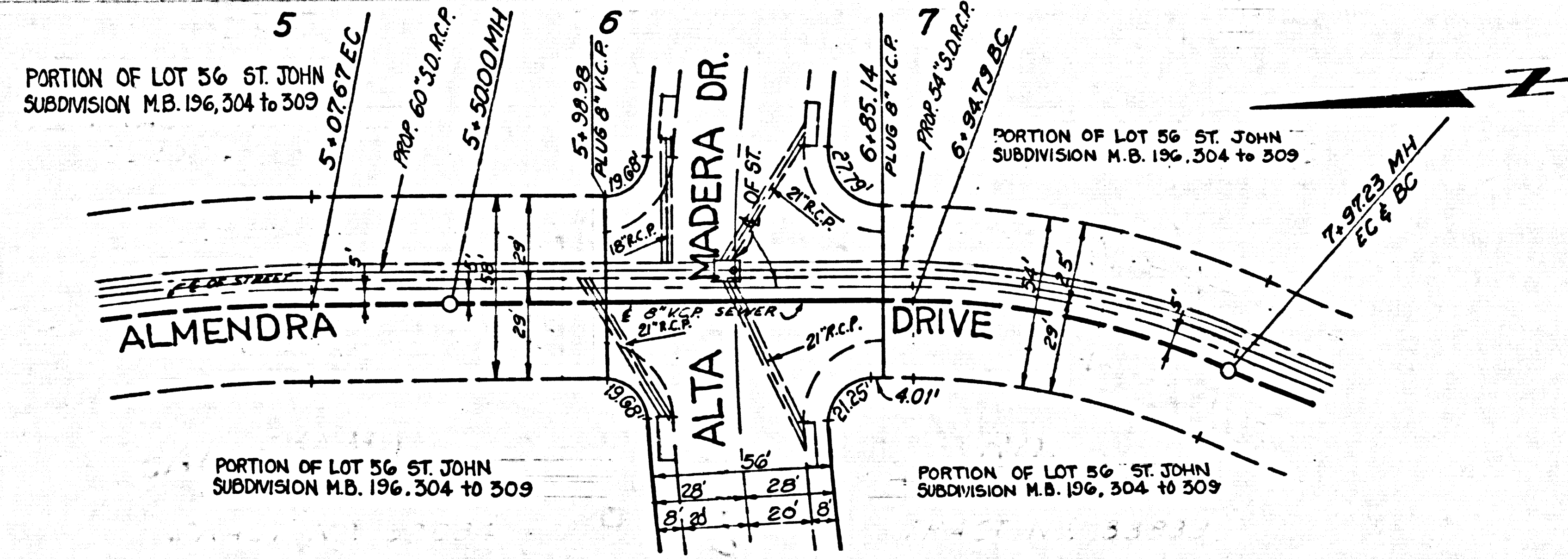
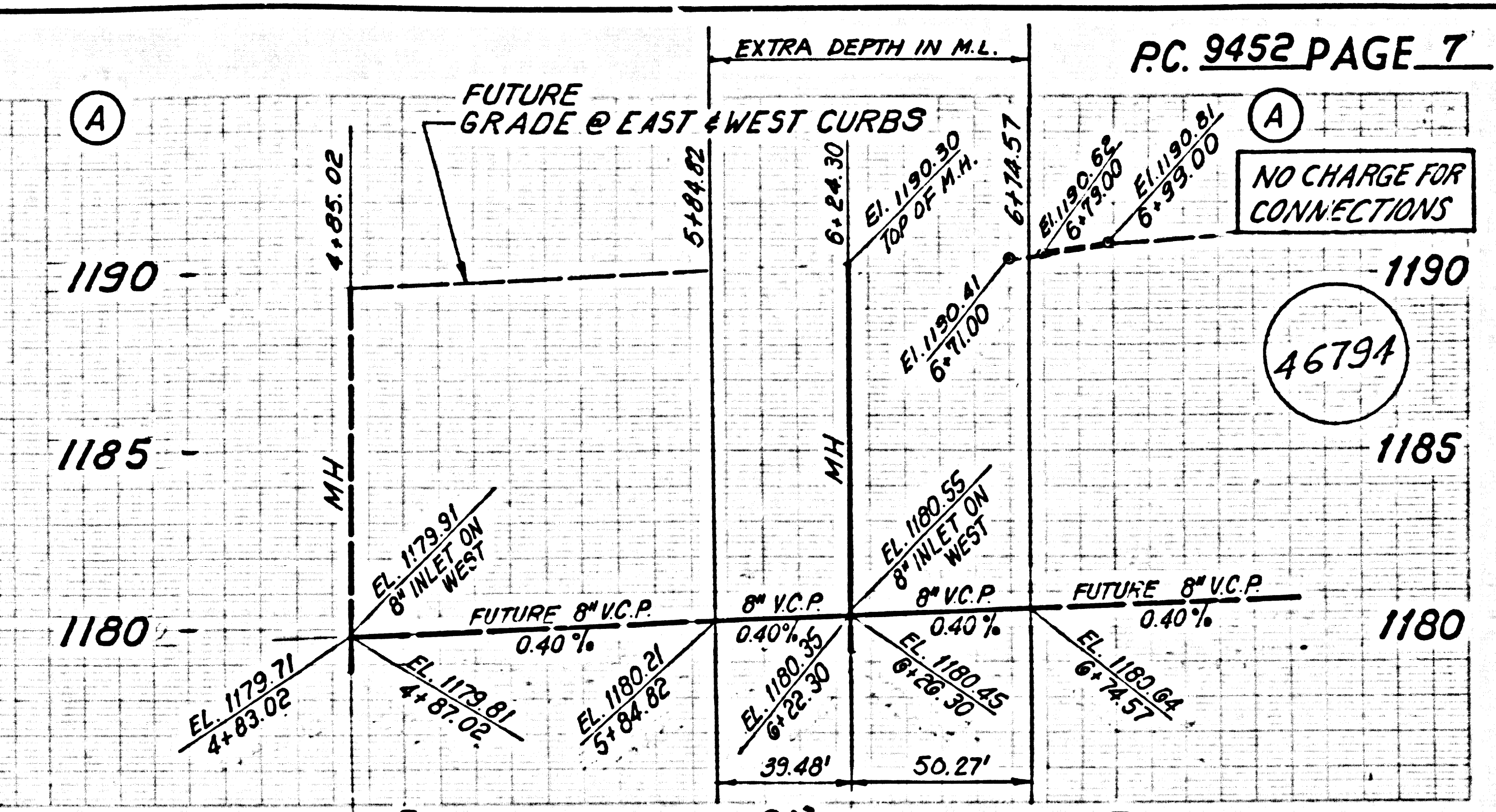
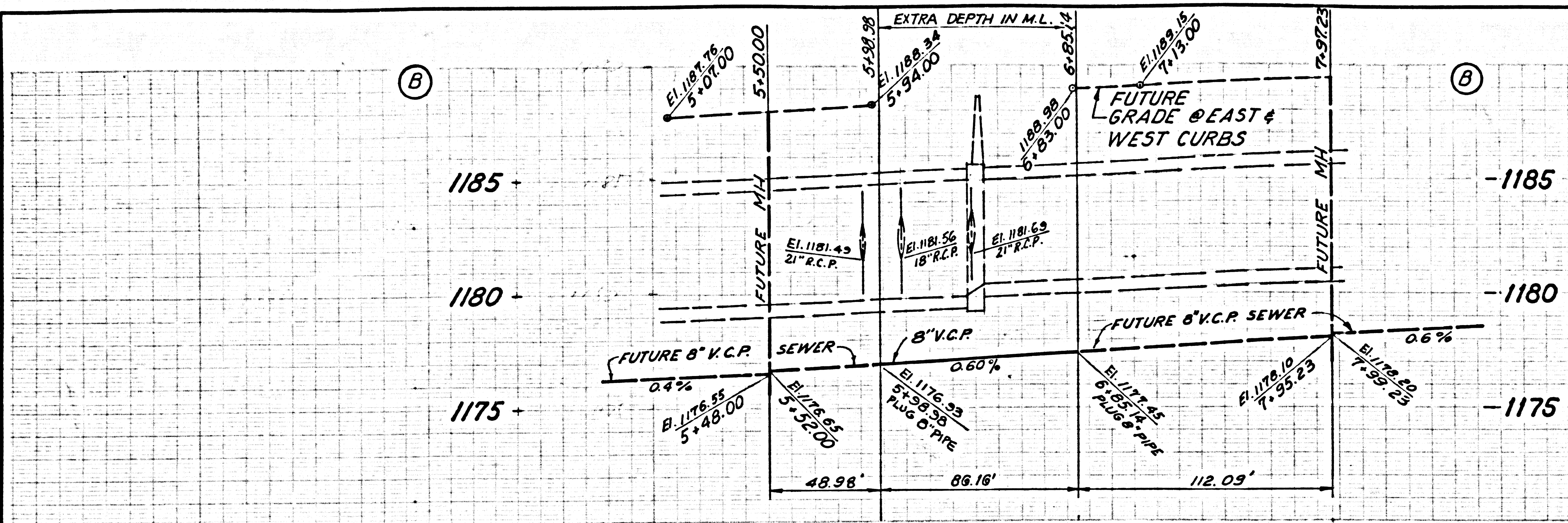
NO CHARGE FOR CONNECTIONS



NO CHARGE FOR CONNECTIONS



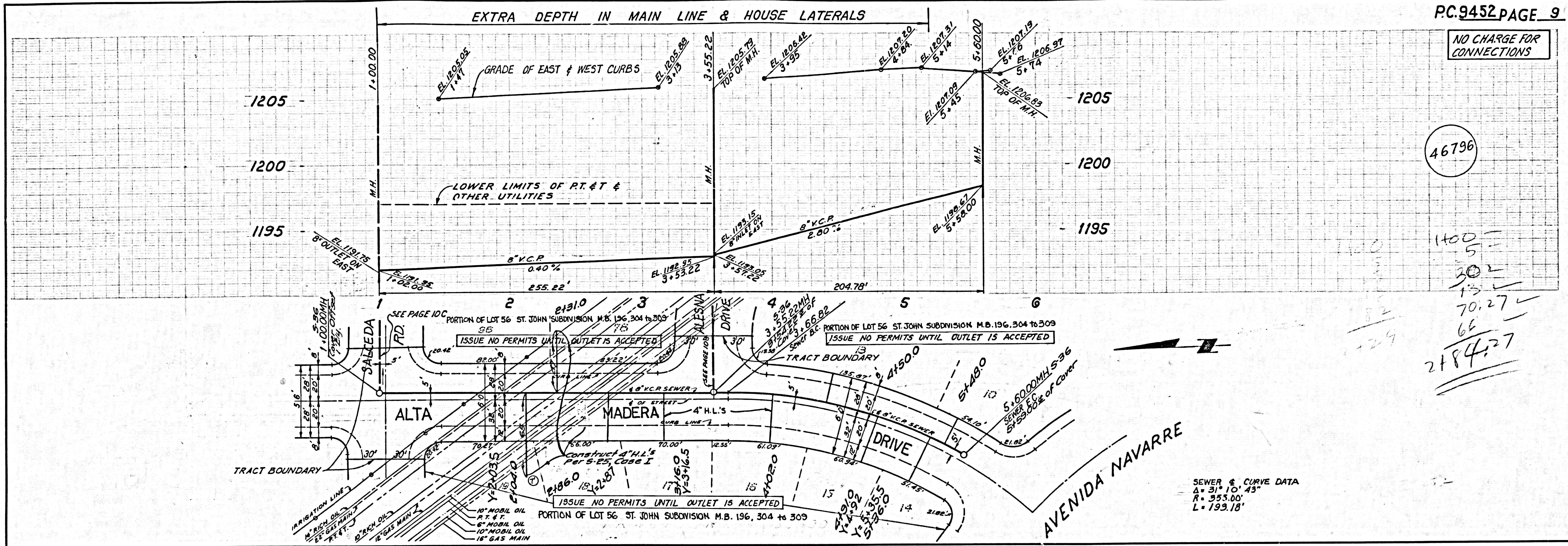




NO CHARGE FOR CONNECTIONS

46796

1400
 5
 30
 15
 70.27
 66
 2184.27



SEWER & CURVE DATA
 Δ = 31° 10' 43"
 R = 353.00'
 L = 193.18'

NO CHARGE FOR CONNECTIONS

46797

