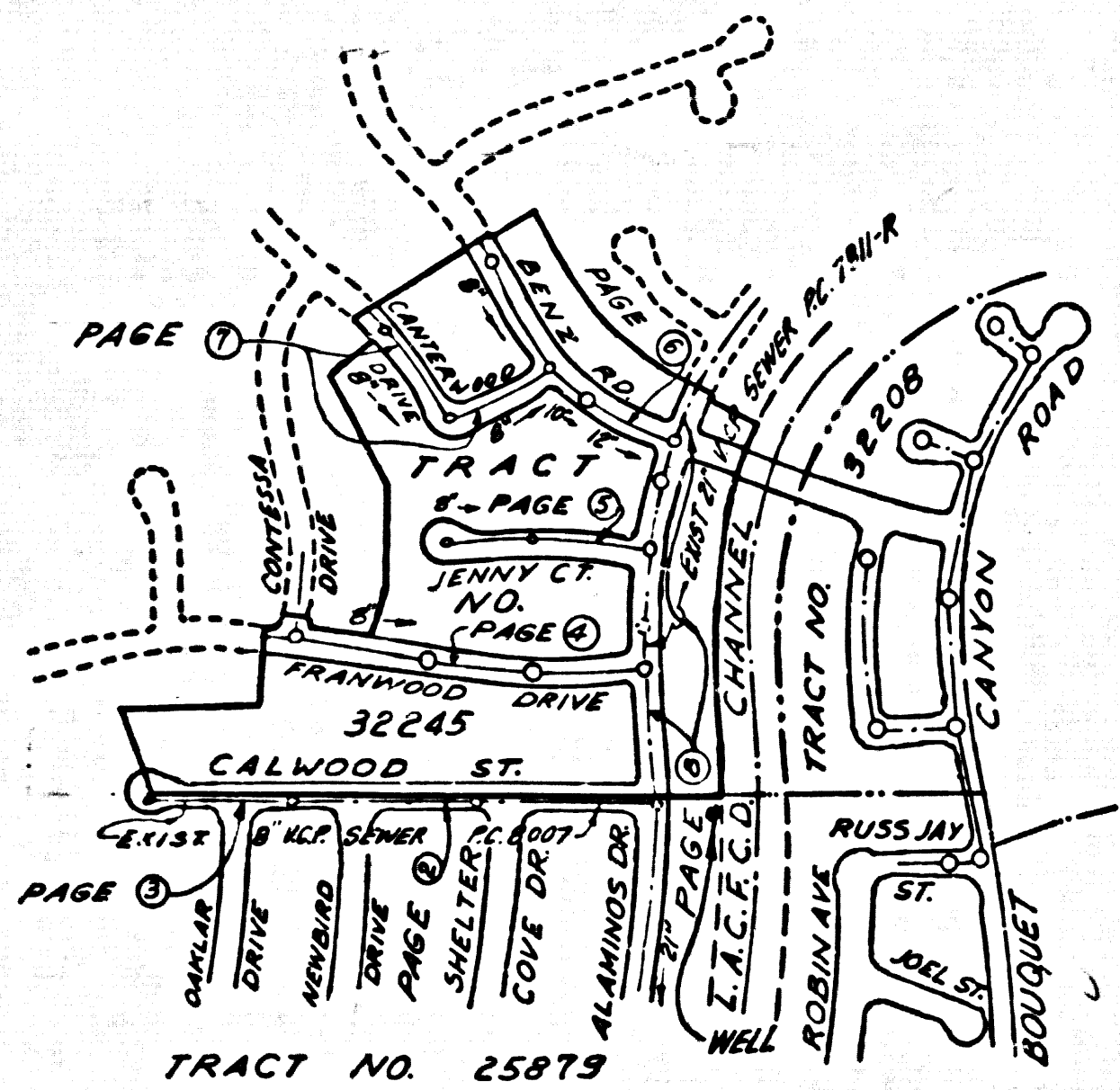


B.M. BL 3927 ELEV. 1363.063
 L.A.C.F.C. BR. CAP MON IN CB. 8 FT. 50 END
 OF CB. 118 FT. N. + 20 FT. W. C/L INT. BOUQUET
 C.N. RD. + RUSS JAY ST. MKD BM 144-00510
 NEWHALL QUAD. 19 72

DOUBLE SCALE

NOTE:
 NUMBERS IN CIRCLES INDICATE
 PAGE NUMBERS.



INDEX MAP
 SCALE 1"=500'
 P.C. 9453

BEFORE BREAKING INTO OR CONSTRUCTION ON A COUNTY
 SANITATION DISTRICT SEWER AND PRIOR TO FINAL ACCEPTANCE
 OF THE PROJECT SANITATION DISTRICT INSPECTOR SHALL BE
 NOTIFIED BY PHONE 966-9669, SO THAT REQUIRED INSPECTION
 CAN BE MADE.

NO CONNECTION FOR THE DISPOSAL OF INDUSTRIAL WASTE
 SHALL BE MADE TO SEWERS SHOWN ON THESE DRAWINGS UNTIL
 A PERMIT FOR INDUSTRIAL WASTE WATER DISCHARGE HAS BEEN
 ISSUED BY THE SANITATION DISTRICTS FOR SAID CONNECTION.

GENERAL NOTES:

- ELEVATIONS ARE IN FEET ABOVE U.S.C. & G.S. SEA LEVEL DATUM OF 1929.
- NO REVISIONS SHALL BE MADE IN THESE PLANS WITHOUT THE APPROVAL OF THE COUNTY ENGINEER.
- NO REPRESENTATIVE OF THE COUNTY ENGINEER WILL SURVEY OR LAY OUT ANY PORTION OF THE WORK.
- GRADES TO WHICH THIS IMPROVEMENT IS TO BE CONSTRUCTED ARE SHOWN ON PLANS AND PROFILES. GRADE POINTS FOR TOP OF CURBS, CENTER LINE OF STREETS, OR CENTER LINE OF ALLEYS ARE SHOWN ON PROFILES. AT ALL POINTS BETWEEN DESIGNATED POINTS THE GRADE SHALL BE ESTABLISHED SO AS TO CONFORM TO A STRAIGHT LINE DRAWN BETWEEN SAID DESIGNATED POINTS.
- THE PRIVATE ENGINEER SHALL FURNISH THE COUNTY ENGINEER WITH GRADE SHEETS AND STATIONING FOR ALL HOUSE LATERALS AND "T" OR "Y" BRANCHES AND SHALL PROVIDE STAKES FOR THEM AT THEIR PROPER LOCATIONS WITH STATIONING PLAINLY MARKED. ALL HOUSE LATERALS SHALL BE CONSTRUCTED IN A STRAIGHT ALIGNMENT AT RIGHT ANGLES FROM THE MAIN LINE SEWER EXCEPT AS SHOWN ON THE PLANS. HOUSE LATERALS FROM CHIMNEYS SHALL NOT HAVE AN ANGLE OF LESS THAN 45° WITH THE MAIN LINE SEWER. ANY CHANGE IN ALIGNMENT SHALL BE REQUESTED IN WRITING BY THE PRIVATE ENGINEER.
- THE PRIVATE ENGINEER SHALL FURNISH THE HOUSE LATERAL DEPTH AT THE PROPERTY LINE BELOW THE TOP OF CURB ELEVATION FOR EACH HOUSE LATERAL ON THE GRADE SHEET.
- BEFORE WORK CAN BE STARTED, THE CONTRACTOR MUST OBTAIN A PERMIT TO EXCAVATE IN COUNTY STREETS FROM THE L.A. COUNTY ROAD DEPT., DISTRICT OFFICE NO. 2 AND PAY A FEE TO THE COUNTY ENGINEER, SANTA CLARITA VALLEY DISTRICT OFFICE, TO COVER THE COST OF CONSTRUCTION INSPECTION AND RECORD PLANS.
- IF WORK IS TO BE DONE IN A STATE HIGHWAY, A PERMIT MUST BE OBTAINED FROM THE STATE OF CALIFORNIA, DIVISION OF HIGHWAYS, 130 SOUTH SPRING STREET, LOS ANGELES, CALIFORNIA.
- APPROVAL OF THIS PLAN BY THE COUNTY OF LOS ANGELES DOES NOT CONSTITUTE A REPRESENTATION AS TO THE ACCURACY OF THE LOCATION OR THE EXISTENCE OR NON-EXISTENCE OF ANY UNDERGROUND UTILITY PIPE, OR STRUCTURE WITHIN THE LIMITS OF THIS PROJECT. THIS NOTE APPLIES TO ALL PAGES.
- REFER TO SECTION 7-10.4.1 OF THE STANDARD SPECIFICATIONS, REGARDING SAFETY ORDERS.
- PRIOR TO THE ISSUANCE OF THE REQUIRED SEWER CONSTRUCTION PERMIT BY THE COUNTY ENGINEER, THE CONTRACTOR SHALL OBTAIN A PERMIT TO EXCAVATE FROM THE STATE OF CALIFORNIA, DIVISION OF INDUSTRIAL SAFETY.

CONSTRUCTION NOTES:

- WORK SHALL BE CONSTRUCTED ACCORDING TO THE STANDARD SPECIFICATIONS FOR PUBLIC WORKS CONSTRUCTION 1976 EDITION AND COUNTY ENGINEER SPECIAL PROVISIONS FOR THE CONSTRUCTION OF SANITARY SEWERS DATED SEPT. 21, 1976 AND SHALL BE PROSECUTED ONLY IN THE PRESENCE OF THE COUNTY ENGINEER.
- THE CONTRACTOR SHALL NOTIFY THE DESIGN DIVISION BY TELEPHONE, (213) 974-7288 AT LEAST TWENTY-FOUR HOURS BEFORE STARTING ANY WORK UNDER THIS CONTRACT.
- HOUSE LATERALS TO BE CONSTRUCTED WITH INVERTS AT PROPERTY LINE 6 FEET BELOW CURB GRADE EXCEPT AS NOTED.
- TYPE OF THE BRANCHES MAY BE USED FOR CONNECTIONS TO MAINLINE SEWERS EXCEPT AS NOTED.
- ALL STRUCTURES SHALL BE EITHER BRICK MANHOLES PER S-23 OR PRECAST CONCRETE MANHOLES PER S-26, EXCEPT AS NOTED.
- PROVIDE STAKES ON THE PROPERTY LINE OR PROPERTY LINES PRODUCED AT RIGHT ANGLES TO THE SEWER LINE AT THE CENTER LINE OF EACH MANHOLE.
- MANHOLE TOPS IN UNIMPROVED RIGHTS OF WAY TO BE SIX INCHES ABOVE FINISHED GRADE.
- VERIFIED CLAY PIPE JOINTS SHALL BE TYPE "D", "F", OR "G" PER STANDARD SPECIFICATIONS SECTION 208-2.
- IF A POWER POLE IS WITHIN THREE FEET OF THE SEWER, THE SEWER SHALL BE ENCASED, PER S-23, CASE 2, TWO FEET ON EACH SIDE FROM THE POINT OF INTERFERENCE.
- IF DURING THE COURSE OF CONSTRUCTION IT IS DETERMINED THAT THERE IS LESS THAN FOUR FEET OF COVER OVER THE TOP OF A MAIN LINE OR HOUSE LATERAL V.C.P. SEWER WHICH IS NOT INDICATED ON THE PLANS, THE PIPE SHALL BE ENCASED PER S-23, CASE 2 UNLESS OTHERWISE APPROVED BY THE COUNTY ENGINEER.
- ALL JOINTS BETWEEN CAST IRON PIPE AND VERIFIED CLAY PIPE SHALL BE MADE WITH A RUBBER SLEEVE JOINT, TYPE "C" OR "D", WITH BUSHING IF NECESSARY PER STANDARD SPECIFICATIONS, SECTION 208-2.
- SEWERS TO BE TESTED FOR LEAKAGE PER SECTION 206-6.8 OF THE STANDARD SPECIFICATIONS AND SPECIAL PROVISIONS.
- RESURFACE ALL TRENCHES WITHIN PAVED AREAS TO MEET L.A. COUNTY ROAD DEPT. OR CALIFORNIA STATE HIGHWAY REQUIREMENTS IN ACCORDANCE WITH PERMITS.
- FULL COMPLIANCE WITH SECTION 206-6.8 OF THE SPECIAL PROVISIONS WILL BE REQUIRED FOR BACKFILL IN STREETS. CERTIFICATION OF BACKFILL COMPACTION AND SAND EQUIVALENTS BY A QUALIFIED, REGISTERED TESTING LABORATORY SHALL BE PROVIDED BY THE PERMITTEE PRIOR TO THE ISSUANCE OF A CERTIFICATE OF PARTIAL ACCEPTANCE.
- FOR NEW HOUSE LATERALS TO BE CONSTRUCTED ON EXISTING 8" AND 12" V.C.P. MAINLINES TO BE REMOVED AND REPLACED WITH 8" x 4" WYE OR THE EXISTING TYPE 12" JOINTS ON 8" MAINLINE AND 2" x 4" WYE OR FEE USING TYPE "D" JOINTS ON 2" MAINLINE.

CONSTRUCTED IN
 TRACT NO. 32245
 PRIVATE CONTRACT NO. 9453
 INDEX 276 S 133
 W.S. 62

4 SHEETS, 8 PAGES
 SCALE: VERT. 1"=8'
 HORIZ. 1"=40' DECEMBER, 1977
 PREPARED IN THE OFFICES OF
 SIKAND ENGINEERING ASSOCIATES
 12230 BURBANK BLVD., VAN NUYS
 CA 91411 (818) 781-8350
 BY: Karolyn C. Kambly
 REG. C. E. No. 21893

46402

THE FOLLOWING LATEST REVISED STANDARD PLANS ON FILE IN THE OFFICE OF THE COUNTY ENGINEER SHALL APPLY IN THE CONSTRUCTION OF THIS PROJECT:

LEGEND	
MINIMUM PUBLIC SAFETY REQUIREMENTS	S-1
BRICK MANHOLE	S-23
STANDARD MANHOLE STEP	S-27
BEDDING FOR SEWER PIPE	S-31
CRADLING AND ENCASUREMENT	S-33
WYE OR THE SUPPORT	S-36
ALLOWABLE TRENCH WIDTHS	S-38
LOCKING MANHOLE FRAME AND COVER	S-53
NON-REINFORCED PRECAST CONCRETE MANHOLE	S-56

COUNTY OF LOS ANGELES, CALIFORNIA
 STEPHEN W. KOONCE, ACTING COUNTY ENGINEER, JOHN D. PARKHURST, CHIEF ENGINEER
 APPROVED Samuel L. Miller 3/21/78 APPROVED Frank P. Dan 3/24/78
 REGIONAL ENGINEER DATE OFFICE ENGINEER

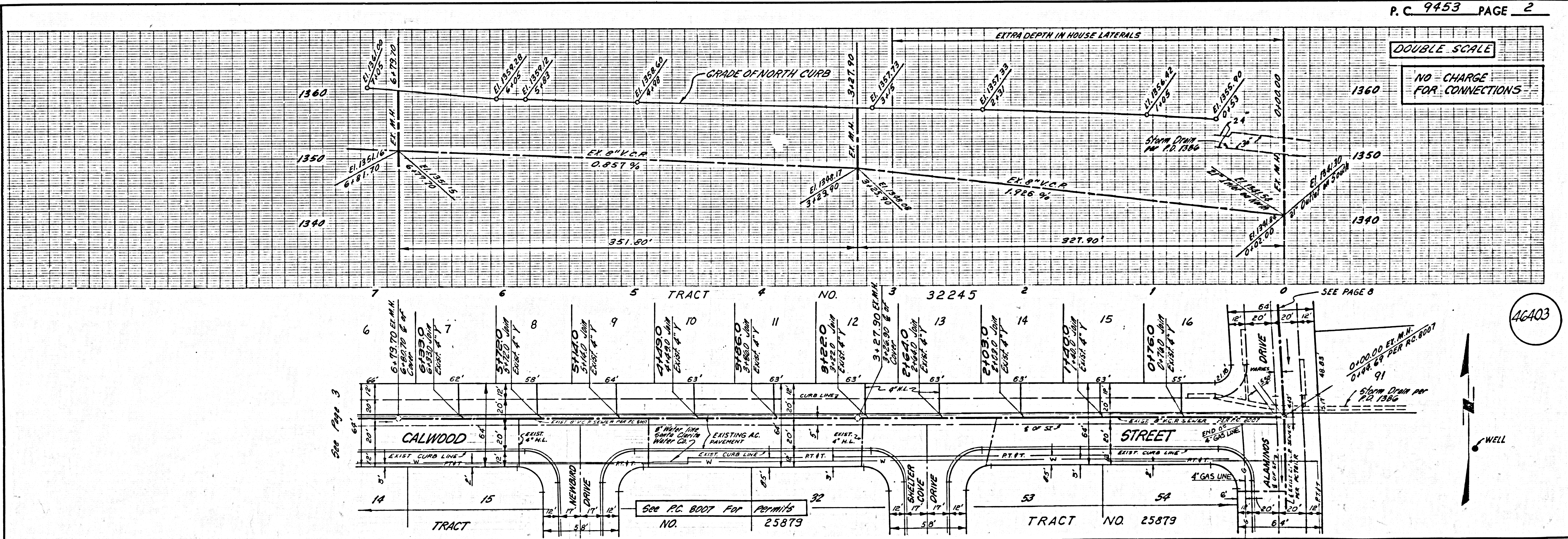
CHECKED Robert H. Tharion 3-21-78
 DATE
 NO. C.E. NO. 13786

SANTA CLARITA VALLEY BLDG. DIST. 82 J.N. 0250.02

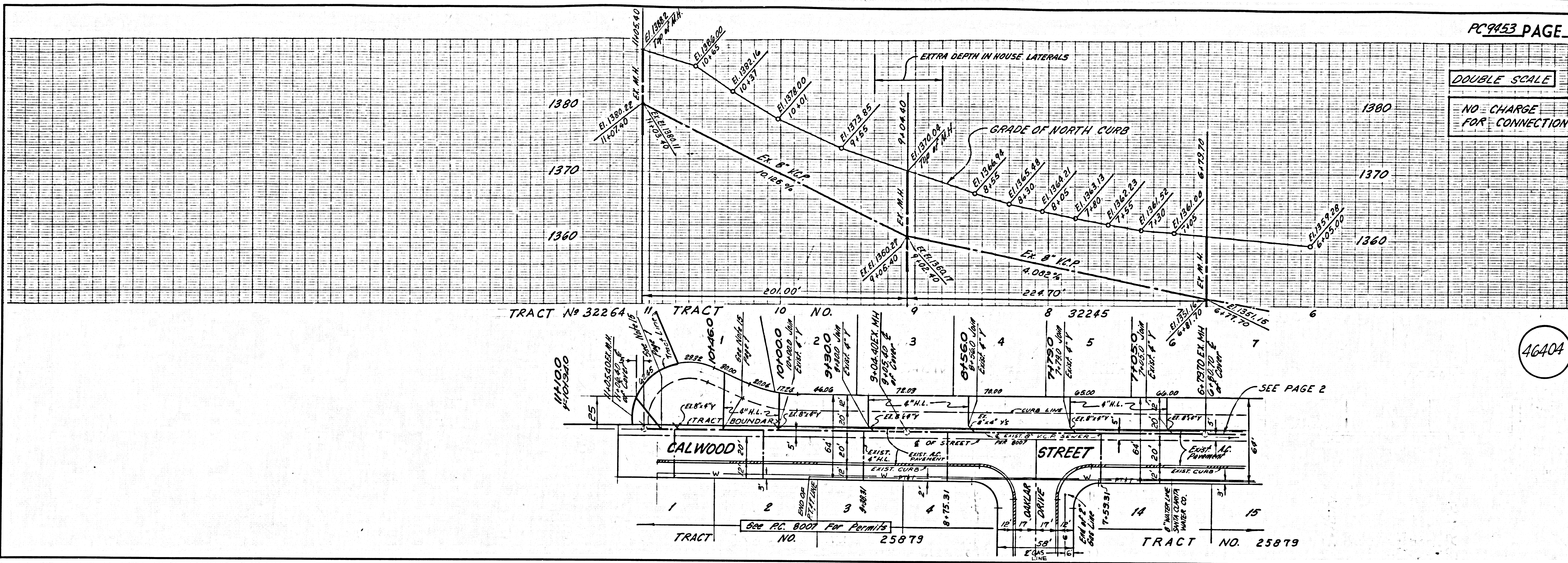
DOUBLE SCALE

NO CHARGE
 FOR CONNECTIONS

46403

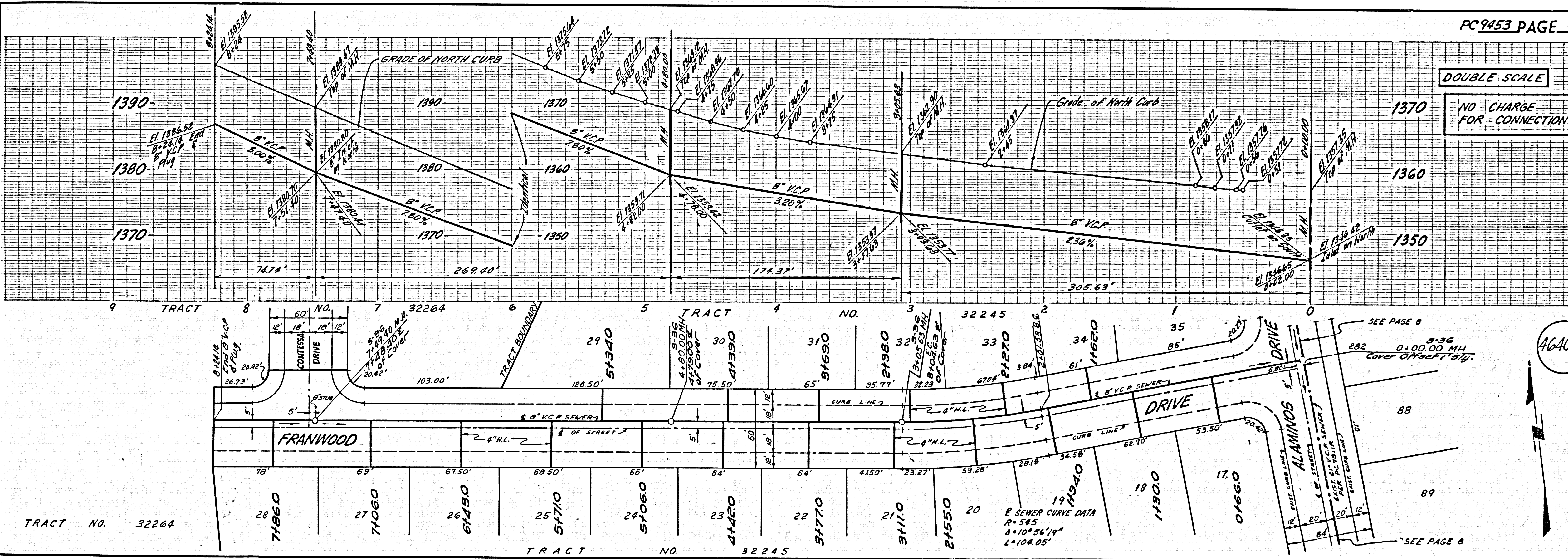


DOUBLE SCALE
NO CHARGE FOR CONNECTIONS



46404

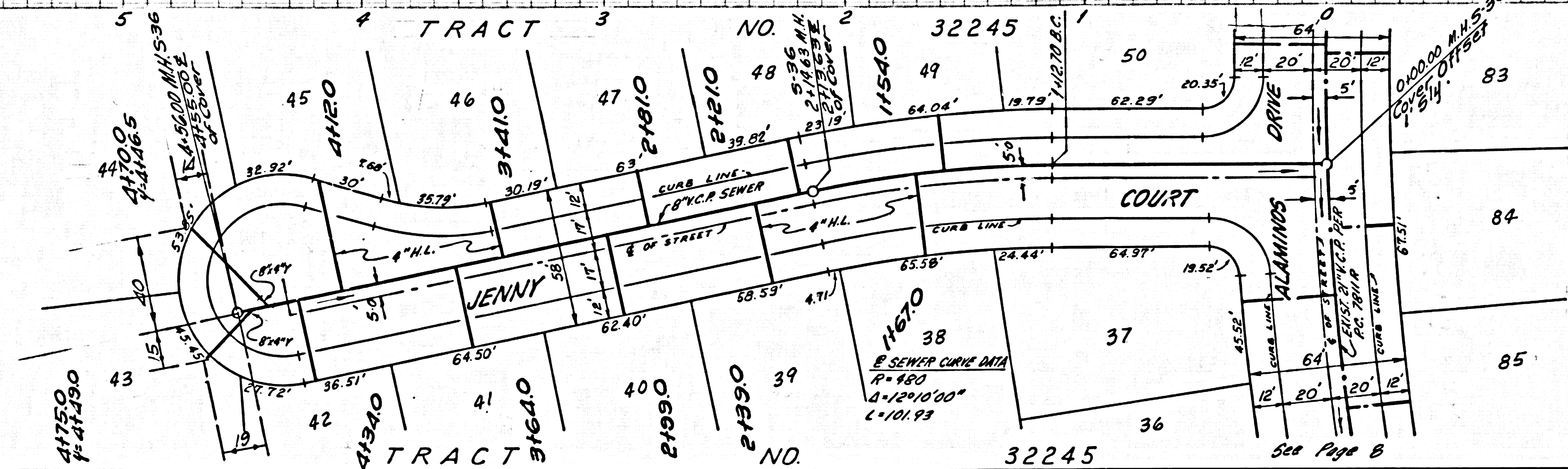
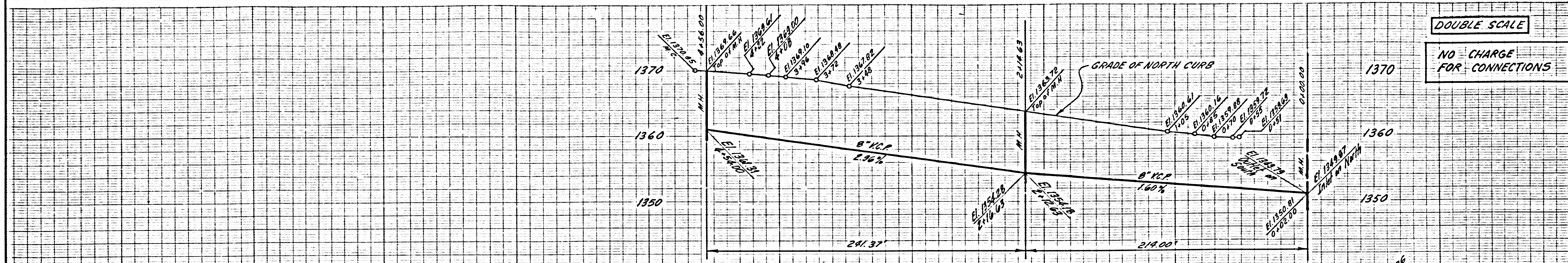
DOUBLE SCALE
NO CHARGE FOR CONNECTIONS



46405

DOUBLE SCALE

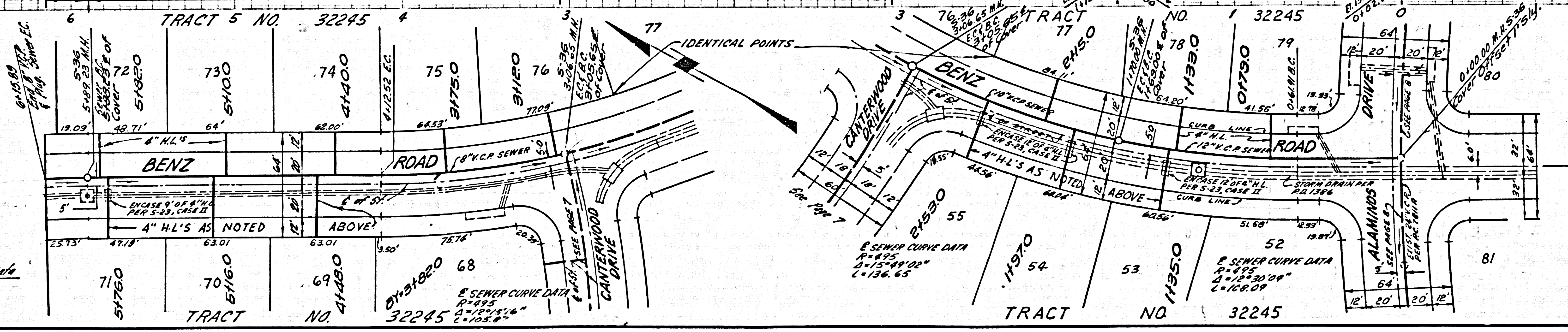
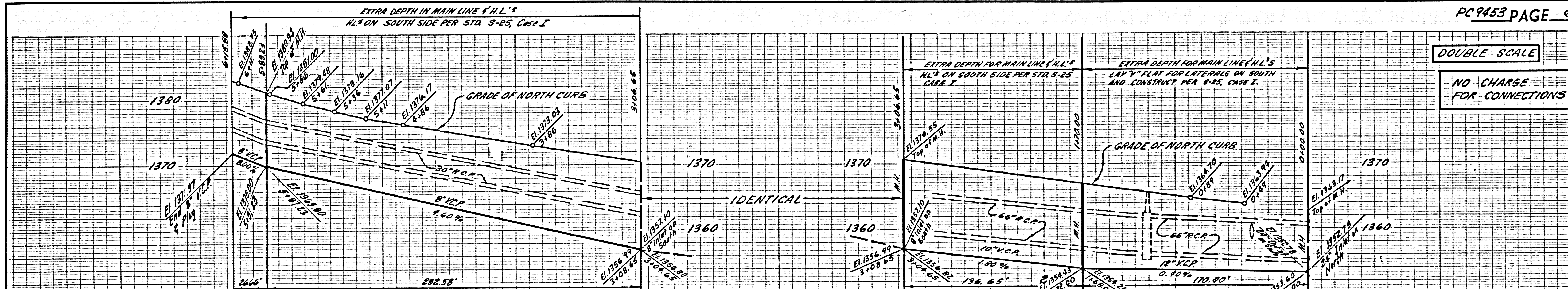
NO CHARGE FOR CONNECTIONS



46406

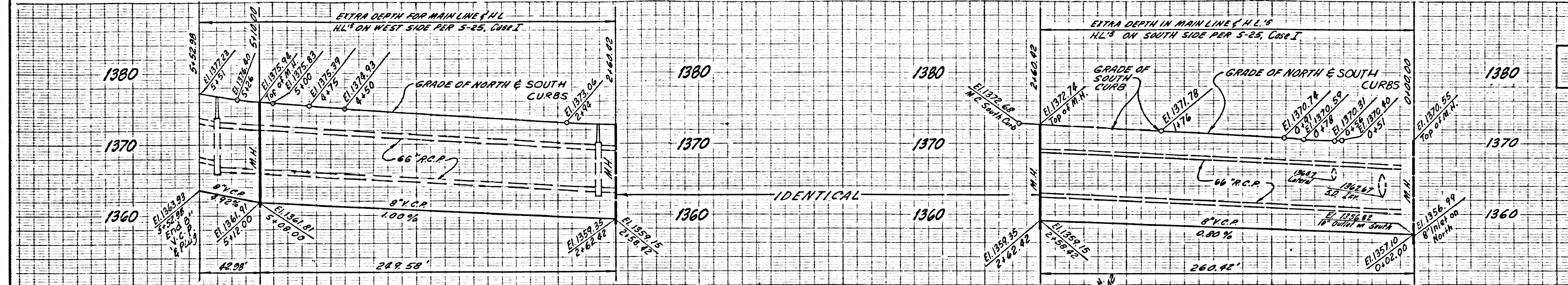
DOUBLE SCALE

NO CHARGE FOR CONNECTIONS

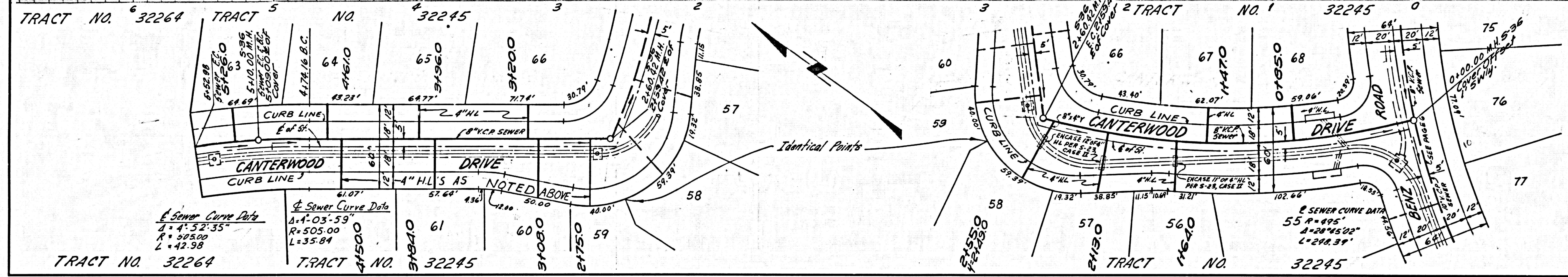


46407

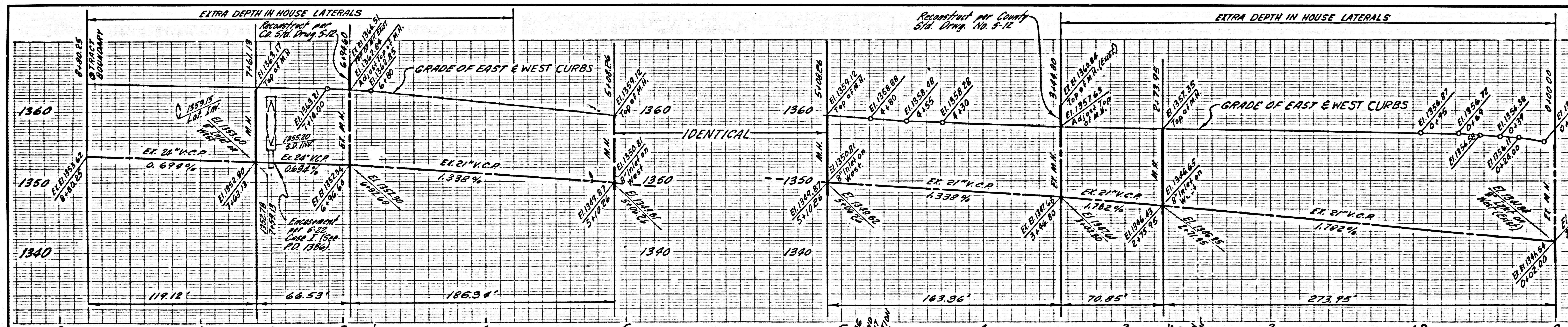
8" Sewer Curve Data
 A = 8' 45.10"
 R = 555.00'
 L = 26.66'



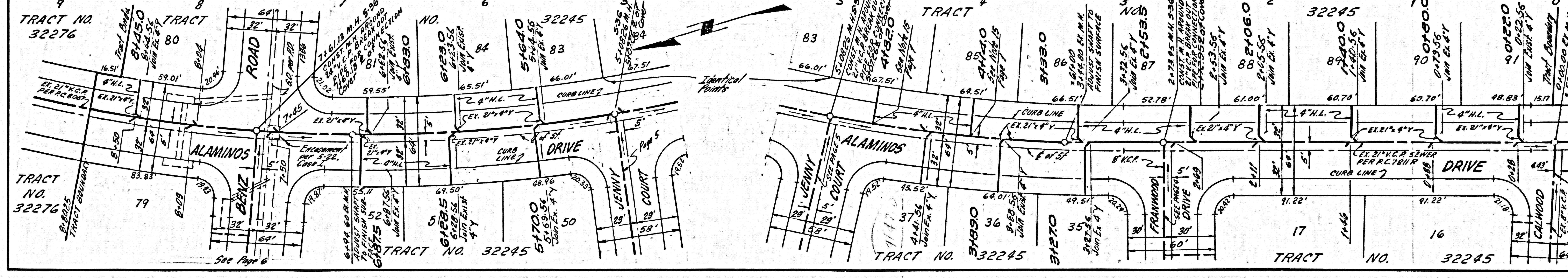
DOUBLE SCALE
NO CHARGE FOR CONNECTIONS



DOUBLE SCALE
NO CHARGE FOR CONNECTIONS



DOUBLE SCALE
NO CHARGE FOR CONNECTIONS



DOUBLE SCALE
NO CHARGE FOR CONNECTIONS