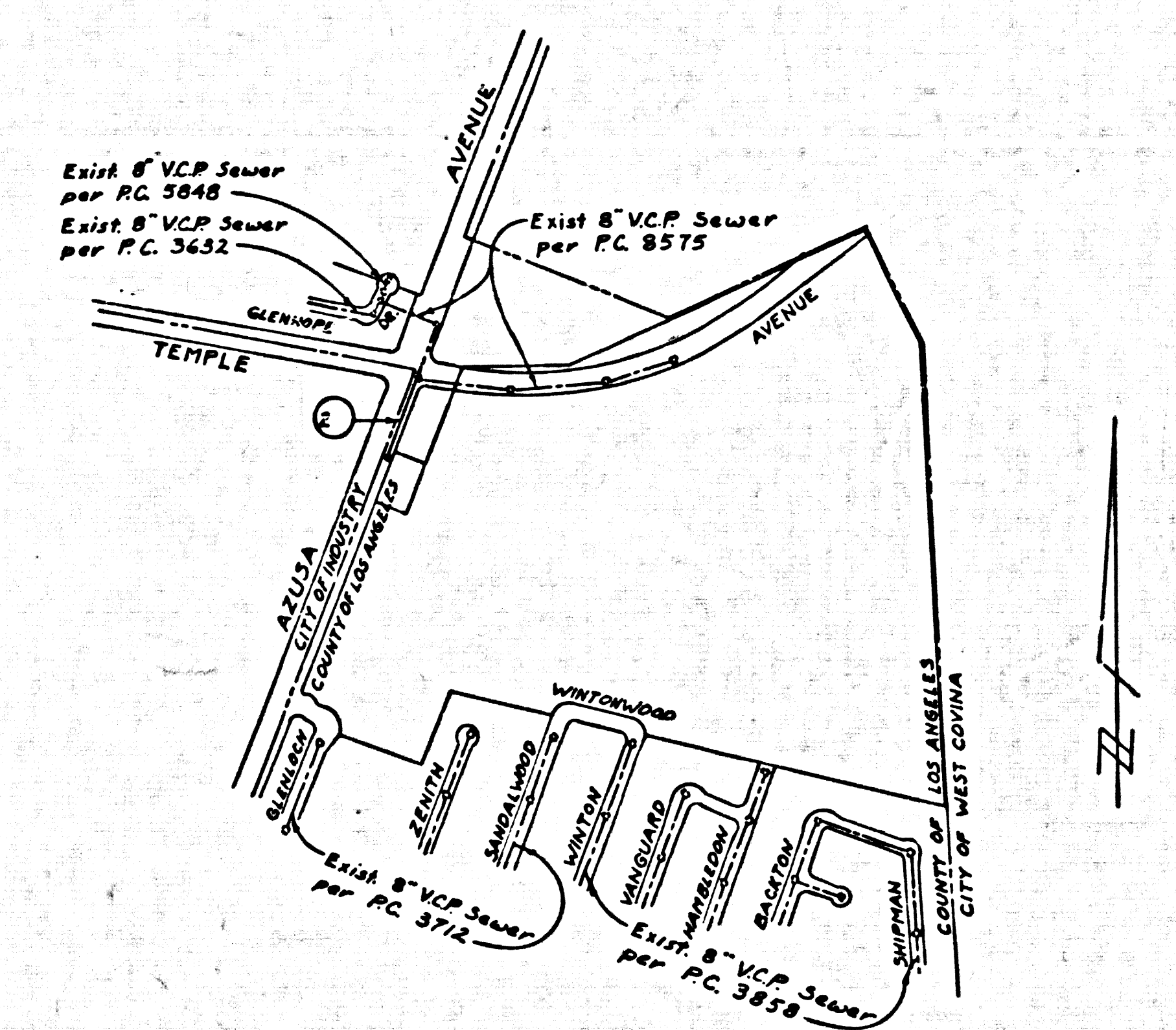


B.M. C.G. 3631 ELEV. 401.057  
 1 1/2 FT. Z. B.C.R. 30 FT. S. &  
 35' W. & AZUSA AVE & TEMPLE  
 AVE.  
 COVINA QUAD. 19 75

Revision No. 1 Date Jan. 22, 1979  
 REALIGNED PROPOSED SEWER 7+21.89 TO  
 10+49.09 TO AVOID NEW TELEPHONE CONDUIT.  
 ADDED 18" R.C.P. S.D. 8+79 TO 9+35.  
 NEW ADDRESS FOR ENGINEER.  
 APPROVED *Sam H. Miller* 1/25/79  
 Office of County Engineer (Date)



INDEX MAP  
 SCALE: 1"=600'  
 P.C. 9454

ISSUE PERMITS FOR LOTS 1 & 2  
 FROM P.C. 8575

DOUBLE SCALE

- GENERAL NOTES:
- ELEVATIONS ARE IN FEET ABOVE U.S.C. & G.S. SEA LEVEL DATUM OF 1929.
  - NO REVISIONS SHALL BE MADE IN THESE PLANS WITHOUT THE APPROVAL OF THE COUNTY ENGINEER.
  - NO REPRESENTATIVE OF THE COUNTY ENGINEER WILL SURVEY OR LAY OUT ANY PORTION OF THE WORK.
  - GRADES TO WHICH THIS IMPROVEMENT IS TO BE CONSTRUCTED ARE SHOWN ON PLANS AND PROFILES. GRADE POINTS FOR TOP OF CURBS, CENTER LINE OF STREETS, OR CENTER LINE OF ALLEYS ARE SHOWN BY CIRCLES ON PROFILES. AT ALL POINTS BETWEEN DESIGNATED POINTS THE GRADE SHALL BE ESTABLISHED SO AS TO CONFORM TO A STRAIGHT LINE DRAWN BETWEEN SAID DESIGNATED POINTS.
  - THE PRIVATE ENGINEER SHALL FURNISH THE COUNTY ENGINEER WITH GRADE SHEETS AND STATIONING FOR ALL HOUSE LATERALS AND "T" OR "Y" BRANCHES AND SHALL PROVIDE STAKES FOR THEM AT THEIR PROPER LOCATIONS WITH STATIONING PLAINLY MARKED. ALL HOUSE LATERALS SHALL BE CONSTRUCTED IN A STRAIGHT ALIGNMENT AT RIGHT ANGLES FROM THE MAIN LINE SEWER EXCEPT AS SHOWN ON THE PLANS. HOUSE LATERALS FROM CHIMNEYS SHALL NOT HAVE AN ANGLE OF LESS THAN 45° WITH THE MAIN LINE SEWER. ANY CHANGE IN ALIGNMENT MUST BE REQUESTED IN WRITING BY THE PRIVATE ENGINEER.
  - THE PRIVATE ENGINEER SHALL FURNISH THE HOUSE LATERAL DEPTH AT THE PROPERTY LINE BELOW THE TOP OF CURB ELEVATION FOR EACH HOUSE LATERAL ON THE GRADE SHEET.
  - BEFORE WORK CAN BE STARTED, THE CONTRACTOR MUST OBTAIN A PERMIT TO EXCAVATE IN COUNTY STREETS FROM THE L.A. COUNTY ROAD DEPT. DISTRICT OFFICE NO. 2 AND PAY A FEE TO THE COUNTY ENGINEER, 201 E. BAYVIEW AVE., SAN DIMAS, CALIF. REGIONAL OFFICE, TO COVER THE COST OF CONSTRUCTION INSPECTION AND RECORD PLANS.
  - IF WORK IS TO BE DONE IN A STATE HIGHWAY, A PERMIT MUST BE OBTAINED FROM THE STATE OF CALIFORNIA, DIVISION OF HIGHWAYS, 126 SOUTH SPRING STREET, LOS ANGELES, CALIFORNIA.
  - APPROVAL OF THIS PLAN BY THE COUNTY OF LOS ANGELES DOES NOT CONSTITUTE A REPRESENTATION AS TO THE ACCURACY OF THE LOCATION OR THE EXISTENCE OR NON-EXISTENCE OF ANY UNDERGROUND UTILITY PIPES, OR STRUCTURE WITHIN THE LIMITS OF THE PROJECT. THIS NOTE APPLIES TO ALL PAGES.
  - REFER TO SECTION 511614 OF THE STANDARD SPECIFICATIONS, REGARDING SAFETY CODES.
  - IN THE EVENT OF THE REQUIRED SAFETY CODES NOT BEING PROVIDED BY THE CONTRACTOR, THE CONTRACTOR SHALL BE RESPONSIBLE FOR THE SAFETY OF THE PROJECT. THE STATE OF CALIFORNIA, DEPARTMENT OF INDUSTRIAL RELATIONS, DIVISION OF INDUSTRIAL SAFETY.

- CONSTRUCTION NOTES:
- WORK SHALL BE CONSTRUCTED ACCORDING TO THE STANDARD SPECIFICATIONS FOR PUBLIC WORKS CONSTRUCTION 1978 EDITION AND COUNTY ENGINEER SPECIAL PROVISIONS FOR THE CONSTRUCTION OF SANITARY SEWERS DATED SEPTEMBER 24, 1978 AND SHALL BE PROSECUTED ONLY IN THE PRESENCE OF THE COUNTY ENGINEER.
  - THE CONTRACTOR SHALL NOTIFY THE DESIGN DIVISION BY TELEPHONE, (213) 978-7423, AT LEAST TWENTY-FOUR HOURS BEFORE STARTING ANY WORK UNDER THIS CONTRACT.
  - HOUSE LATERALS TO BE CONSTRUCTED WITH INVERTS AT PROPERTY LINE 6 FEET BELOW CURB GRADE EXCEPT AS NOTED.
  - WYE OR TE BRANCHES MAY BE USED FOR CONNECTIONS TO MAINLINE SEWERS EXCEPT AS NOTED.
  - ALL STRUCTURES SHALL BE BUILT BRICK MANHOLES PER S-3 OR PRECAST CONCRETE MANHOLES PER S-4, EXCEPT AS NOTED.
  - PROTECT EXISTING OR ON THE PROPERTY LINE OR PROPERTY LINE PRODUCE AT RIGHT ANGLES TO THE SEWER LINE AT THE CENTER LINE OF EACH MANHOLE.
  - MANHOLE TOPS IN UNIMPROVED RIGHTS OF WAY TO BE 6 INCHES ABOVE FINISHED GRADE.
  - VITRIFIED CLAY PIPE JOINTS SHALL BE TYPE "B", "T", OR "P" PER STANDARD SPECIFICATIONS SECTION 300-2.
  - IF A POWER POLE IS WITHIN THREE FEET OF THE SEWER, THE SEWER SHALL BE ENCASED PER S-21, CASE II, TWO FEET ON EACH SIDE FROM THE POINT OF INTERFERENCE.
  - IF DURING THE COURSE OF CONSTRUCTION IT IS DETERMINED THAT THERE IS LESS THAN FOUR FEET OF COVER OVER THE TOP OF A MAIN LINE OR HOUSE LATERAL V.C.P. SEWER WHICH IS NOT INDICATED ON THE PLANS, THE PIPE SHALL BE ENCASED PER S-21, CASE II UNLESS OTHERWISE APPROVED BY THE COUNTY ENGINEER.
  - ALL JOINTS BETWEEN CAST IRON PIPE AND VITRIFIED CLAY PIPE SHALL BE MADE WITH A RUBBER SLEEVE JOINT, TYPE "C" OR "B" (WITH BUSHING IF NECESSARY) PER STANDARD SPECIFICATIONS, SECTION 300-2.
  - SEWERS TO BE TESTED FOR LEAKAGE PER SECTION 300-1.6 OF THE STANDARD SPECIFICATIONS AND SPECIAL PROVISIONS.
  - REPLACE ALL TRENCHES WITHIN PAVED AREAS TO MEET L.A. COUNTY ROAD DEPT. OR CALIFORNIA STATE HIGHWAY REQUIREMENTS IN ACCORDANCE WITH PERMITS.
  - FULL COMPLIANCE WITH SECTION 300-1, AND THE SPECIAL PROVISIONS WILL BE REQUIRED FOR EACH RILL IN STREET. CERTIFICATION OF SUFFICIENT COMPACTION AND SAND EQUIVALENTS BY A QUALIFIED, REGISTERED TESTING LABORATORY SHALL BE PROVIDED BY THE PERMITTEE PRIOR TO THE ISSUANCE OF A CERTIFICATE OF PARTIAL ACCEPTANCE.
- NO CONNECTION FOR THE DISPOSAL OF INDUSTRIAL WASTES SHALL BE MADE TO SEWERS SHOWN ON THESE DRAWINGS UNTIL A PERMIT FOR INDUSTRIAL WASTE WATER DISCHARGE HAS BEEN ISSUED BY THE SANITATION DISTRICTS FOR SAID CONNECTION.

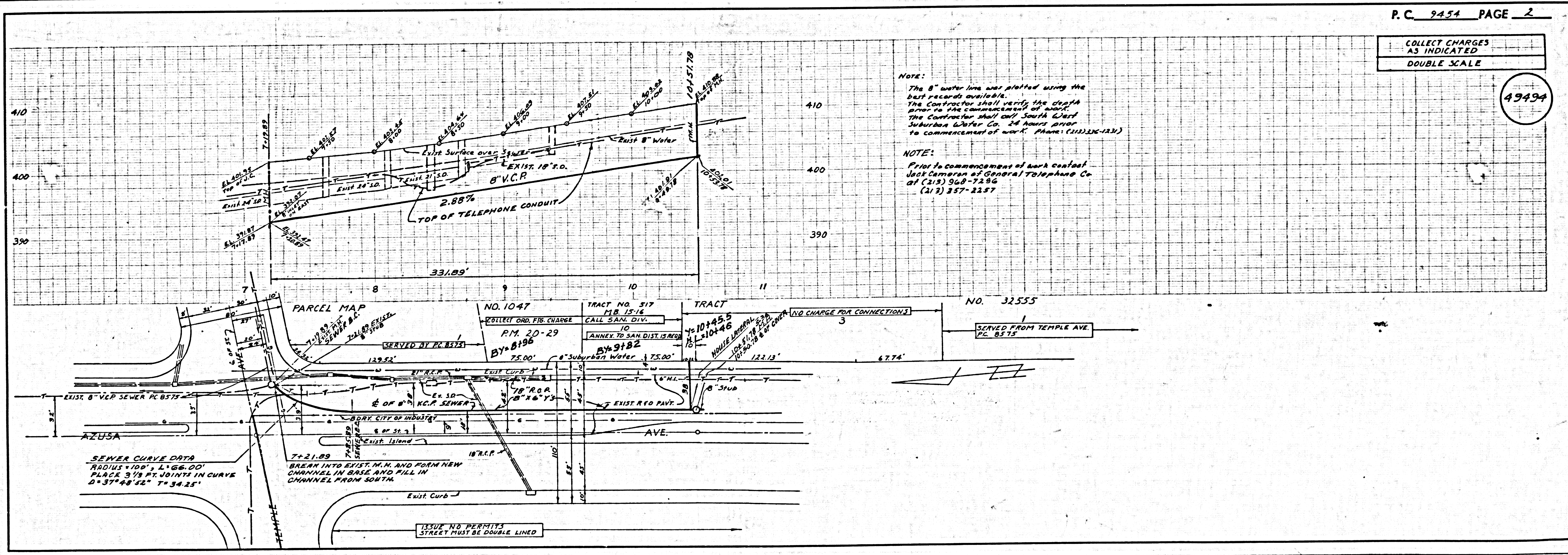
PROFILE, ALIGNMENT AND GRADE OF  
**SANITARY SEWERS** PAGE 1  
 TO BE CONSTRUCTED IN  
 49493  
 AZUSA AVENUE  
 TRACT NO. 32555  
 PRIVATE CONTRACT NO. 9454

W.S. 38-C-2  
 1 SHEET, 2 PAGES  
 SCALE: VERT. 1"=4'  
 HORIZ. 1"=40'  
 SEPT., 1977  
 PREPARED IN THE OFFICES OF  
*Joseph Clyde Moore*  
 JOSEPH CLYDE MOORE  
 447 W. HEATHERGLEN LANE  
 SAN DIMAS, CALIF. 91773  
 (213) 335-5468  
 REG. C. E. No. 11927

THE FOLLOWING LATEST REVISED STANDARD PLANS ON FILE IN THE OFFICE OF THE COUNTY ENGINEER SHALL APPLY IN THE CONSTRUCTION OF THIS PROJECT.

LEGEND	51
MINIMUM PUBLIC SAFETY REQUIREMENTS	52
BRICK MANHOLE	53
STANDARD MANHOLE SET	54
BRICKING FOR SEWER PIPE	55
CASTING AND ENCASEMENT	56
WYE OR TE SUPPORT	57
ALLOWABLE TRENCH WIDTH	58
LOADING MANHOLES REAM AND COVER	59
NON-REINFORCED PRECAST CONCRETE MANHOLE	60

COUNTY OF LOS ANGELES, CALIFORNIA  
 STEPHEN J. KOONCE ACTING, COUNTY ENGINEER  
 JOHN D. PARKHURST, CHIEF ENGINEER  
 APPROVED *Sam H. Miller* REGIONAL ENGINEER  
 SAN DIMAS  
 CHECKED *Thomas E. Howard* DATE 1/25/79  
 REG. C. E. NO. 19156  
 LA PUENTE BLDG. DIST. 2.0 J.N. 0250.02



P.C. 9454 PAGE 2  
 COLLECT CHARGES AS INDICATED  
 DOUBLE SCALE  
 49494

NOTE:  
 The 8" water line was plotted using the best records available.  
 The Contractor shall verify the depth of the water line and the location of the water line before commencing work.  
 The Contractor shall call South West Johnson & Carter Co. 24 hours prior to commencement of work. Phone: (213) 222-1231

NOTE:  
 Prior to commencement of work contact Jack Cameron of General Telephone Co. at (213) 969-7285 or (213) 857-2287