

B.M. B.L. 2965 ELEV. 1301.851
 R.D.M. TAG N. CO. SFT. E. ECR. N.E. COR.
 BOUQUET CANYON RD. + URBANDALE AVE.
 75 FT. N.W. + 20 FT. E. C/L INT.
 NEWHALL 1972 QUAD. 1972

THE FOLLOWING COUNTY ENGINEER STANDARD PLANS APPLY TO THIS PROJECT

LEGEND	1-1
MINIMUM PUBLIC SAFETY REQUIREMENTS	1-2
BRICK MANHOLE	1-3
NON-REINFORCED PRE-CAST CONC. MANHOLE	1-35
LOCKING MANHOLE FRAME + COVER	1-17
STANDARD MANHOLE STEP	1-21
BEDDING FOR SEWER PIPE	1-23
CRADLING AND ENCASUREMENT	1-24
ANCHOR BLOCK	1-25
SPECIAL HOUSE LATERALS	1-26
WYE AND OR TEE SUPPORT	1-27
EROSION PROTECTION IN STEEP SLOPES	1-28
ALLOWABLE TRENCH WIDTH	1-29
SPECIAL SUPPORT AND PROTECTION	1-32

SANTA CLARITA VALLEY BLDG. DIST. NO. 8.2

DOUBLE SCALE

- NOTES:
1. PROVIDE STAKES ON THE PROPERTY LINE OR PROPERTY LINES PRODUCED AT RIGHT ANGLES TO THE SEWER LINE AT THE CENTER LINE OF EACH MANHOLE.
 2. NO REPRESENTATIVE OF THE COUNTY ENGINEER WILL SURVEY OR LAY OUT ANY PORTION OF THE WORK.
 3. THE PRIVATE ENGINEER SHALL FURNISH THE COUNTY ENGINEER WITH GRADE SHEETS AND STATIONING FOR ALL HOUSE LATERALS AND "T" BRANCHES AND SHALL PROVIDE STAKES FOR THEM AT THEIR PROPER LOCATIONS WITH STATIONING PLAINLY MARKED. ALL HOUSE LATERALS SHALL BE CONSTRUCTED IN A STRAIGHT ALIGNMENT AT RIGHT ANGLES FROM THE MAIN LINE SEWER EXCEPT AS SHOWN ON THE PLANS. HOUSE LATERALS FROM CHIMNEYS SHALL NOT HAVE AN ANGLE OF LESS THAN 45° WITH THE MAIN LINE SEWER. ANY CHANGE IN ALIGNMENT SHALL BE REQUESTED IN WRITING BY THE PRIVATE ENGINEER.
 4. THE PRIVATE ENGINEER SHALL FURNISH THE HOUSE LATERAL DEPTH AT THE PROPERTY LINE BELOW THE TOP OF CURB ELEVATION FOR EACH HOUSE LATERAL ON THE GRADE SHEET.
 5. NO REVISIONS SHALL BE MADE IN THESE PLANS WITHOUT THE APPROVAL OF THE COUNTY ENGINEER.
 6. THE CONTRACTOR SHALL NOTIFY THE CONSTRUCTION DIVISION BY TELEPHONE, (213) 874-7829, AT LEAST TWENTY-FOUR HOURS BEFORE STARTING ANY WORK UNDER THE CONTRACT.
 7. MANHOLES SHALL BE BRICK SEWER STRUCTURES PER S-36 OR PRECAST CONCRETE MANHOLES PER S-36 (SEE PLAN) UNLESS OTHERWISE SPECIFIED BY THE COUNTY ENGINEER.
 8. USE STAIRCASE MANHOLE FRAMES AND COVERS, SEE SPEC. 806-1.4 (NOTE).
 9. MANHOLE TOPS IN UNIMPROVED RIGHT-OF-WAY TO BE SIX INCHES ABOVE FINISHED GRADE.
 10. USE EXTRA STRENGTH PIPE. ALL PIPE IS STANDARD DEPTH EXCEPT AS NOTED.
 11. USE MECHANICAL COMPRESSION JOINTS FOR ALL V.C.P. JOINTS PER SPEC. 806-1.4 AND S-36.
 12. IF A POWER POLE IS WITHIN THREE FEET OF THE SEWER, THE SEWER SHALL BE ENCASED, PER S-32, TWO FEET ON EACH SIDE FROM THE POINT OF INTERFERENCE.
 13. IF DURING THE COURSE OF CONSTRUCTION IT IS DETERMINED THAT THERE IS LESS THAN FOUR FEET OF COVER OVER THE TOP OF A MAIN LINE OR HOUSE LATERAL V.C.P. SEWER WHICH IS NOT INDICATED ON THE PLANS, THE PIPE SHALL BE ENCASED PER S-32 EXCEPT UNLESS OTHERWISE APPROVED BY THE COUNTY ENGINEER.
 14. HOUSE LATERALS TO BE CONSTRUCTED WITH INVERTS AT PROPERTY LINE 6 FEET BELOW CURB GRADE EXCEPT AS NOTED.
 15. RESURFACE ALL TRENCHES WITHIN PAVED AREAS TO MEET L.A. COUNTY ROAD DEPT. OR CALIFORNIA STATE HIGHWAY REQUIREMENTS IN ACCORDANCE WITH PERMITS.
 16. REVISIONS TO BE TESTED FOR LEAKAGE PER SECTION 906-1.4 OF THE SPS. SPECIFICATIONS AND SPECIAL ORDERS WITHIN SUPPLEMENTARY SPEC. 11.157.
 17. ALL STATE AND LOCAL TRENCH SAFETY ORDERS WILL BE STRICTLY ENFORCED.
 18. REFER TO SECTION 7-10.41 OF THE STANDARD SPEC'S REGARDING SAFETY ORDERS.
 19. FULL COMPLIANCE WITH SECTION 906-1.3.5 OF THE SPECIAL PROVISIONS WILL BE REQUIRED FOR BACKFILL IN STREETS. CERTIFICATION OF BACKFILL COMPACTION AND SAND EQUIVALENTS BY A QUALIFIED REGISTERED TESTING LABORATORY SHALL BE PROVIDED BY THE PERMITTEE PRIOR TO THE ISSUANCE OF A CERTIFICATE OF PARTIAL ACCEPTANCE.
 20. PRIOR TO THE ISSUANCE OF THE REQUIRED SEWER CONSTRUCTION PERMIT BY THE COUNTY ENGINEER THE CONTRACTOR SHALL OBTAIN A PERMIT TO EXCAVATE FROM THE STATE OF CALIF. DIVISION OF INDUSTRIAL SAFETY.

PROFILE ALIGNMENT AND GRADE OF
 SANITARY SEWERS PAGE 1

TO BE CONSTRUCTED IN
 TRACT NO. 34260
 TRACT NO. 33357

PRIVATE CONTRACT NO. 9466
 INDEX 270 S-133 & 273 S-133
 W.S. 62, D-1

4 SHEETS, 8 PAGES
 SCALE: VERT. 1"=4'
 HORIZ. 1"=40'
 OCT. 1977

PREPARED IN THE OFFICES OF
 V.T.N. Los Angeles
 549 VAN NUYS BLVD.
 VAN NUYS, CALIF.
 REG. C.E. NO. 7722

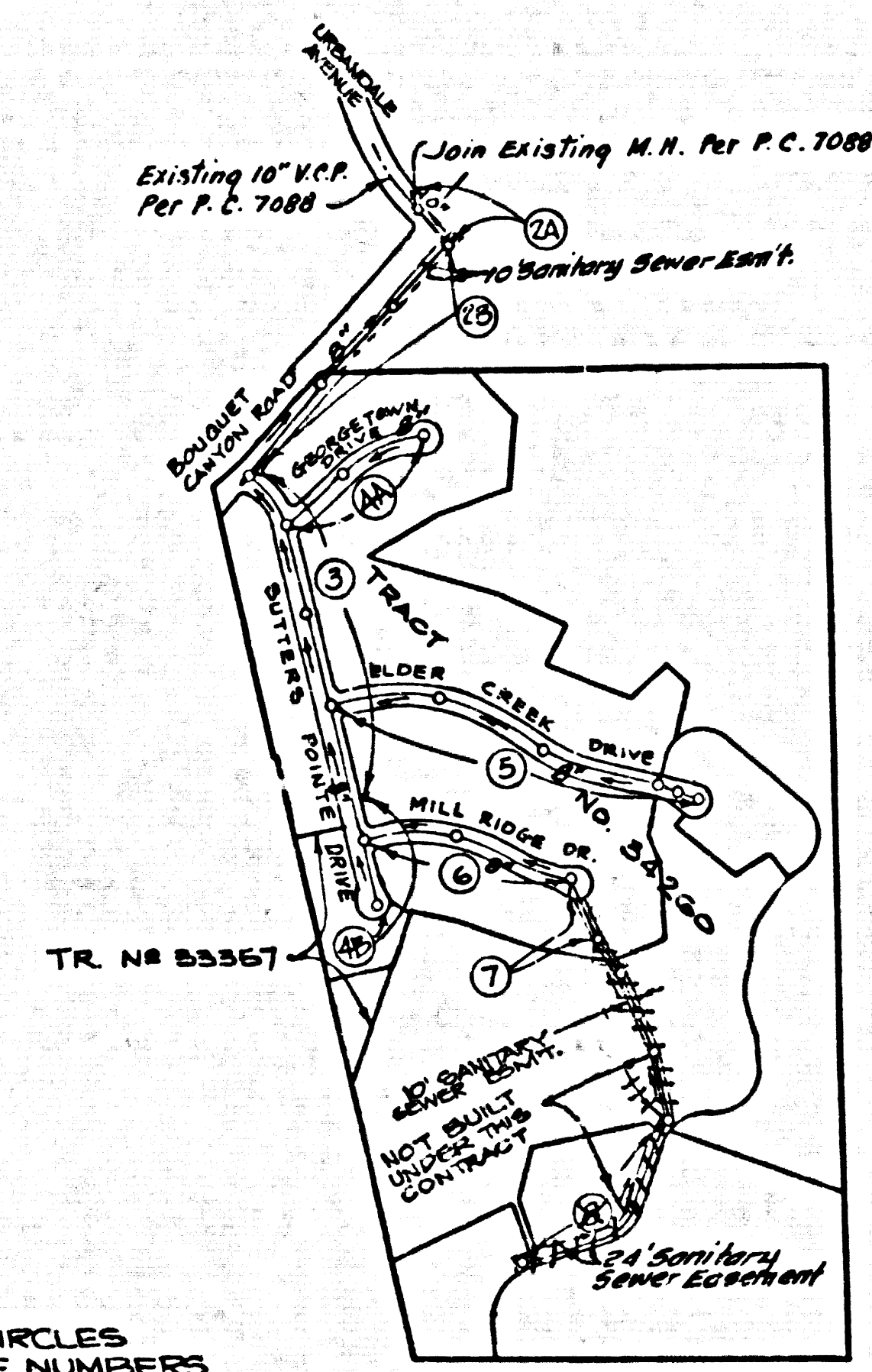
FOR LEGEND SEE PLAN NO. S-1

NOTE:
 GRADES TO WHICH THIS IMPROVEMENT IS TO BE CONSTRUCTED ARE SHOWN ON PLANS AND PROFILES. GRADE POINTS FOR TOP OF CURBS, CENTER LINE OF STREETS, OR CENTER LINE OF ALLEYS ARE SHOWN BY CIRCLES ON PROFILES. AT ALL POINTS BETWEEN DESIGNATED POINTS THE GRADE SHALL BE ESTABLISHED SO AS TO CONFORM TO A STRAIGHT LINE DRAWN BETWEEN SAID DESIGNATED POINTS. SEPARATIONS ARE IN FEET ABOVE U.S.C. & G.S. SEA LEVEL DATUM OF 1929.
 THIS DRAWING AND THE DATA HEREON ARE HEREBY MADE A PART OF THE SPECIAL PROVISIONS FOR PUBLIC WORKS CONSTRUCTION (1976 EDITION) AND COUNTY ENGINEER SPECIAL PROVISIONS FOR THE CONSTRUCTION OF SANITARY SEWERS. BEFORE WORK CAN BE STARTED THIS CONTRACTOR MUST OBTAIN A PERMIT TO EXCAVATE FROM THE COUNTY ENGINEER'S OFFICE. THIS PERMIT SHALL BE PROCURED PRIOR TO THE PRESENCE OF THE COUNTY ENGINEER.
 APPROVAL OF THIS PLAN BY THE COUNTY OF LOS ANGELES DOES NOT CONSTITUTE A REPRESENTATION AS TO THE ACCURACY OF THE LOCATION OR OF THE EXISTENCE OR NON-EXISTENCE OF ANY UNDERGROUND UTILITY PIPE, OR STRUCTURE WITHIN THE LIMITS OF THIS PROJECT. THIS NOTE APPLIES TO ALL PAGES.
 IF WORK IS TO BE DONE IN A STATE HIGHWAY, A PERMIT MUST BE OBTAINED FROM THE STATE OF CALIFORNIA, DIVISION OF HIGHWAY, 126 SOUTH SHINING STREET, LOS ANGELES, CALIFORNIA.

COUNTY OF LOS ANGELES, CALIFORNIA
 STEPHEN A. HOBBS, ACTING COUNTY ENGINEER J. D. PARKHURST, CHIEF ENGINEER
 APPROVED BY *John H. Thayer* 5-3-78 APPROVED BY *John D. Parkhurst* 6/4/78
 (SEAL) (SEAL)

SUBMITTED BY: *Frederick C. ...*
 CHECKED BY: *John H. Thayer* 5-3-78
 REG. C.E. NO. 11724
 SET SAN. DISTRICTS
 H.P. SPECIAL CHRG.
 SECTION CHARGES

J.N. 0250.02



INDEX MAP
 SCALE: 1"=500'
 P.C. 9466
 TRACT NO. 33357
 TRACT NO. 34260

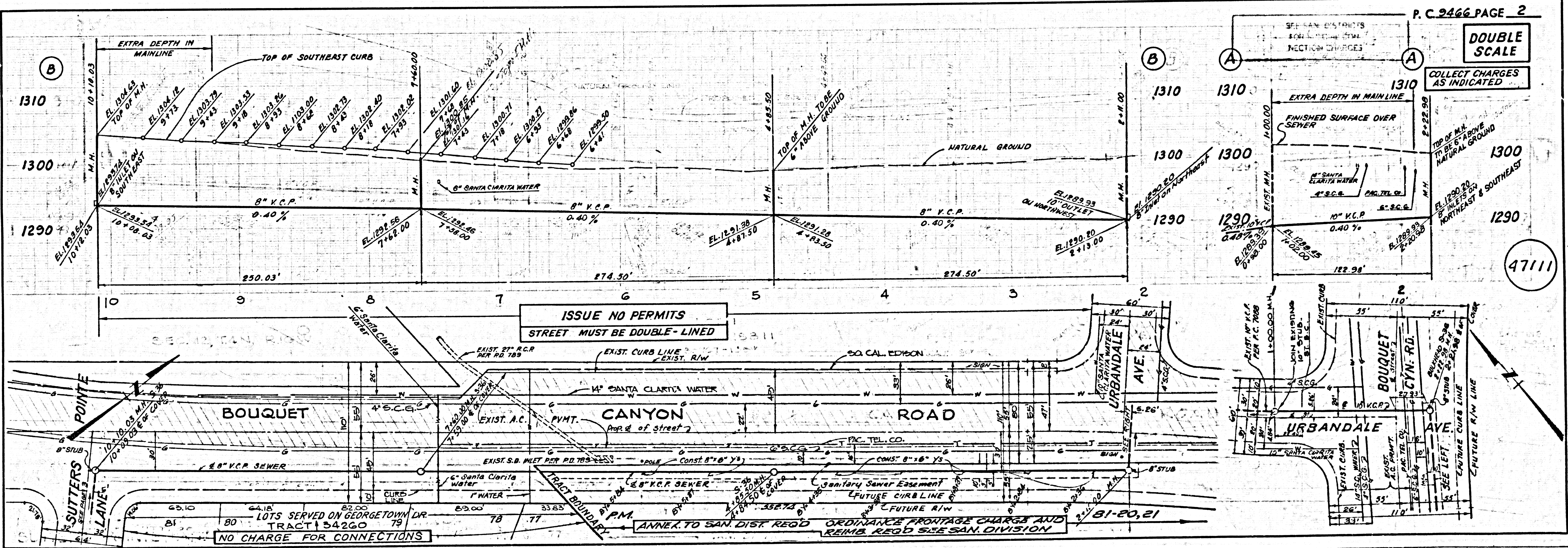
LOTS 46 & 90 ARE NOT TO BE SERVED

REVISION NO. 1 APRIL 18, 1983
 PAGE 5, ELDER CREEK DR. 1 CONST. M.N. @ STA. 10+05.31 AND 23 LF. OF 8" ABS TRUSS PIPE AS SHOWN
 APPROVED *John H. Thayer* 5/2/83
 OFFICE OF COUNTY ENGINEER/RE NO. 16853

NO CONNECTION FOR THE DISPOSAL OF INDUSTRIAL WASTES SHALL BE MADE TO SEWERS SHOWN ON THESE DRAWINGS UNLESS A PERMIT FOR INDUSTRIAL WASTE WATER DISCHARGE HAS BEEN OBTAINED FROM THE SANITATION DISTRICTS FOR SAID CONNECTION.

BEFORE BREAKING INTO OR CONSTRUCTION OF A COUNTY SANITATION DISTRICT SEWER AND PRIOR TO FINAL ACCEPTANCE BY THE PROJECT SANITATION DISTRICT INSPECTOR, THE CONTRACTOR SHALL BE NOTIFIED BY PHONE 962-9070-30 THAT REQUIRED INSPECTION CAN BE MADE.

NOTICE TO CONTRACTOR
 The existence and location of any underground utility pipes or structures shown on these plans are obtained by a search of the available records. To the best of my knowledge there are no existing utilities except as shown on these plans. The contractor is required to take due precautionary measures to protect the utility lines shown and any other lines not of record or not shown on these plans.
Frederick C. ...
 REG. 7722

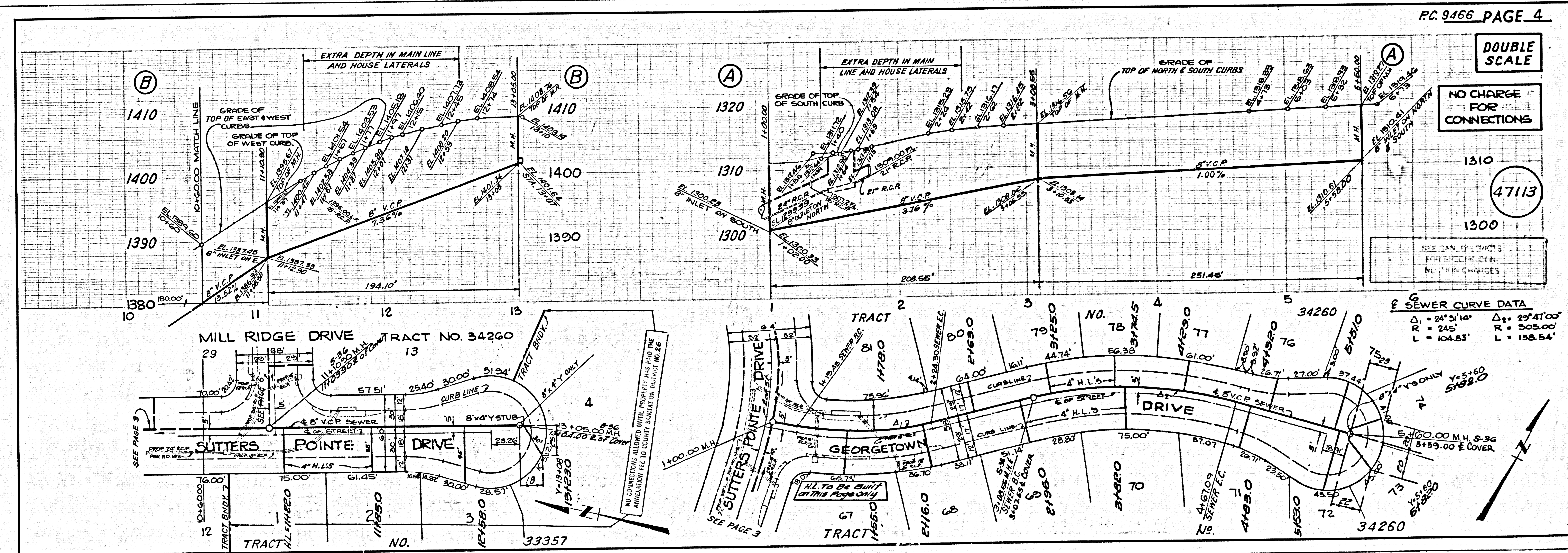
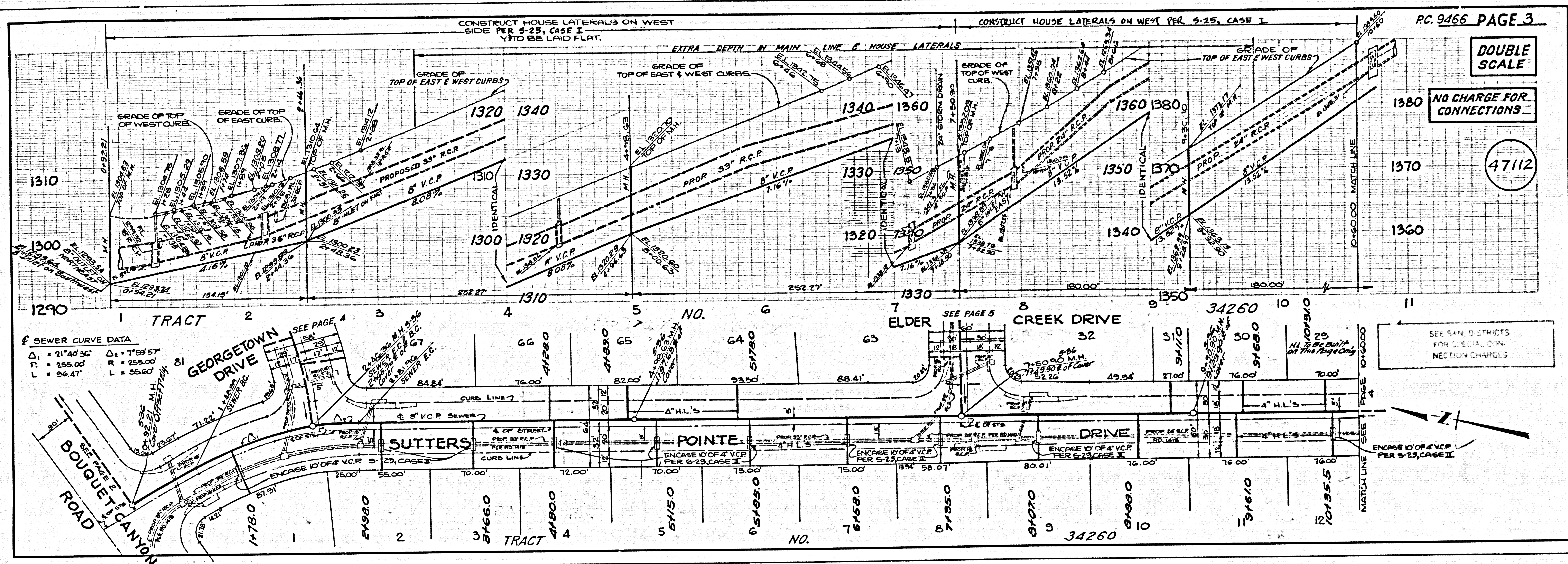


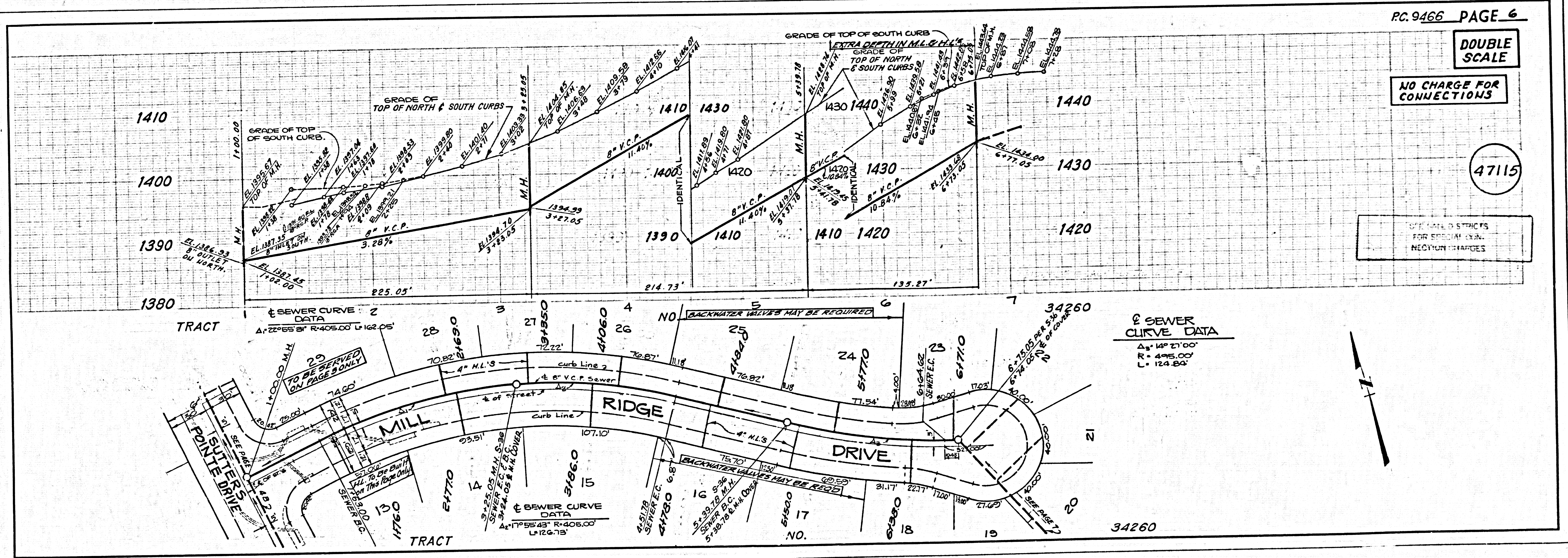
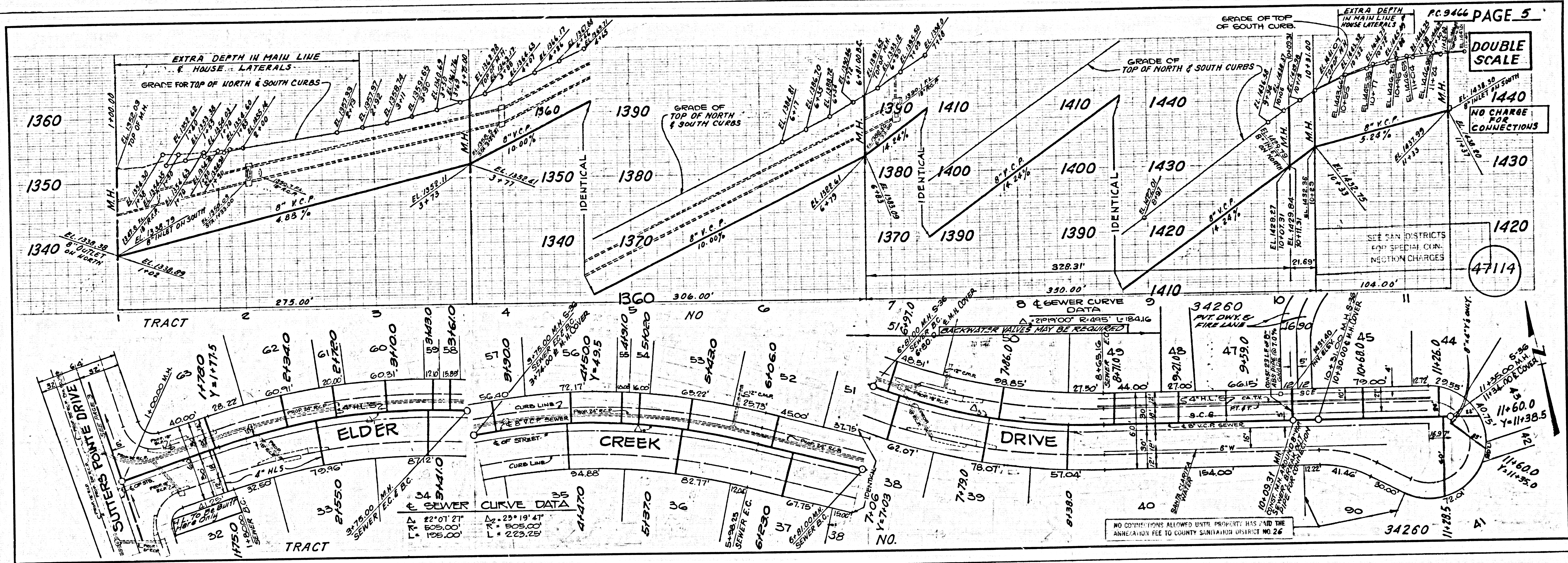
ISSUE NO PERMITS
 STREET MUST BE DOUBLE-LINED

NO CHARGE FOR CONNECTIONS

ANNEX TO SAN. DIST. REGD. ORDINANCE FRONTAGE CHARGE AND REIMB. REGD. SEE SAN. DIVISION

PAGE 2

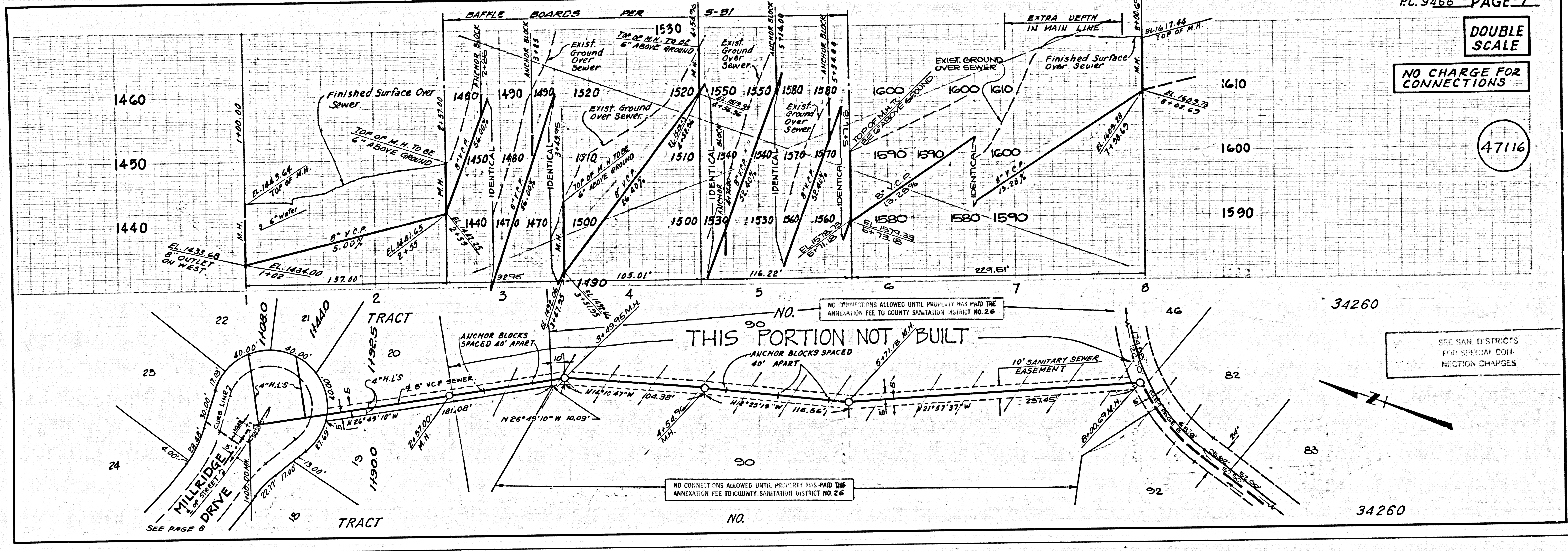




DOUBLE SCALE

NO CHARGE FOR CONNECTIONS

47116



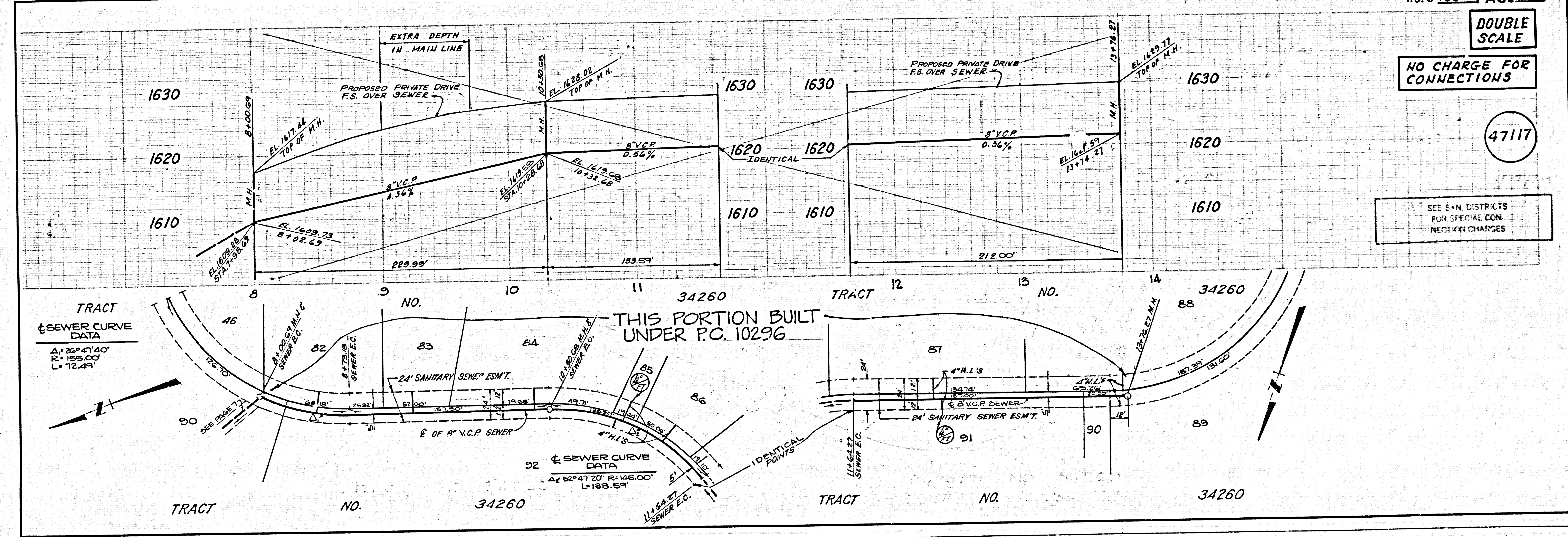
SEE SAN. DISTRICTS FOR SPECIAL CONNECTION CHARGES

34260

DOUBLE SCALE

NO CHARGE FOR CONNECTIONS

47117



SEE SAN. DISTRICTS FOR SPECIAL CONNECTION CHARGES

34260